

Material quoted: Capron- sieve No. 64 GOST 17-46-71
95 x 129

PHYSICAL AND MECHANICAL PROPERTIES:

1. ELONGATION % AT RUPTURE OF FABRIC STRIP SIZE 50x200 mm = 20 (MAX)
2. NO. OF THREADS AT THE WARP
NO. OF THREADS AT THE WEFT
3. SURFACE DENSITY (MASS OF 1m²) OF FABRIC g/m² = FOR FABRIC NO: 55 = 30
= FOR FABRIC NO: 61 = 39
4. RUPTURE LOAD FOR A FABRIC STRIP OF 50x200mm (MIN)

	AT THE WARP		AT THE WEFT	
FOR FABRIC NO: 55	H=176	KTC=19	H=167	KTC=17
FOR FABRIC NO: 61	H=176	KTC=18	H=157	KTC=16

5. ABRASION RESISTANCE, CYCLES (MIN)
 1. FOR FABRIC NUMBER 55 = 120
 2. FOR FABRIC NUMBER 61 = 120
6. THE MAGNIFICATION OF THE IMAGE = 200 (MIN)

Refers to capron fabrics for sieves

N64 = Number of fabric; 95 = width; 129 = Length

Technical Requirements:

1. capron fabrics for sieves are manufactured by linen weaving from capron monofabric on warp and weft.
2. All fabric surfaces for sieves should consist of equal square holes.
3. capron fabrics for sieves after weaving are subjected to applying polymethyl methacrylate emulsion with simultaneous stitching and heat treatment.
4. Physico-mechanical indices of capron sieves fabrics
 - a) width after fabric in cm = 95 ± 2
 - b) thickness (number) of fibre warp and weft = 2.22 (450)
 - c) weight of fabric square meter in grams = 25
 - d) number of threads per 10cm = warp 1c = 640 ± 38 weft 2c = 640 ± 51
 - e) Tearing force of fibre strip 50x200 in kgf warp & weft = 20 (min)
 - f) number of holes per cm² (optional) = 4096 ± 285
 - g) size of holes in micron (optional) = 100 ± 12
 - h) effective section factor (optional) = 45.1

MATERIAL QUOTED: SILK CLOTH FOR SIEVE NO. 55 OR NO. 61 GOST 4403-67.
(ALTERNATE)

SILK FABRICS USED FOR MAKING SIEVES THAT ARE EMPLOYED IN FLOUR GRINDING AND STARCH PASTE PRODUCING INDUSTRIES.

TECHNICAL REQUIREMENTS:

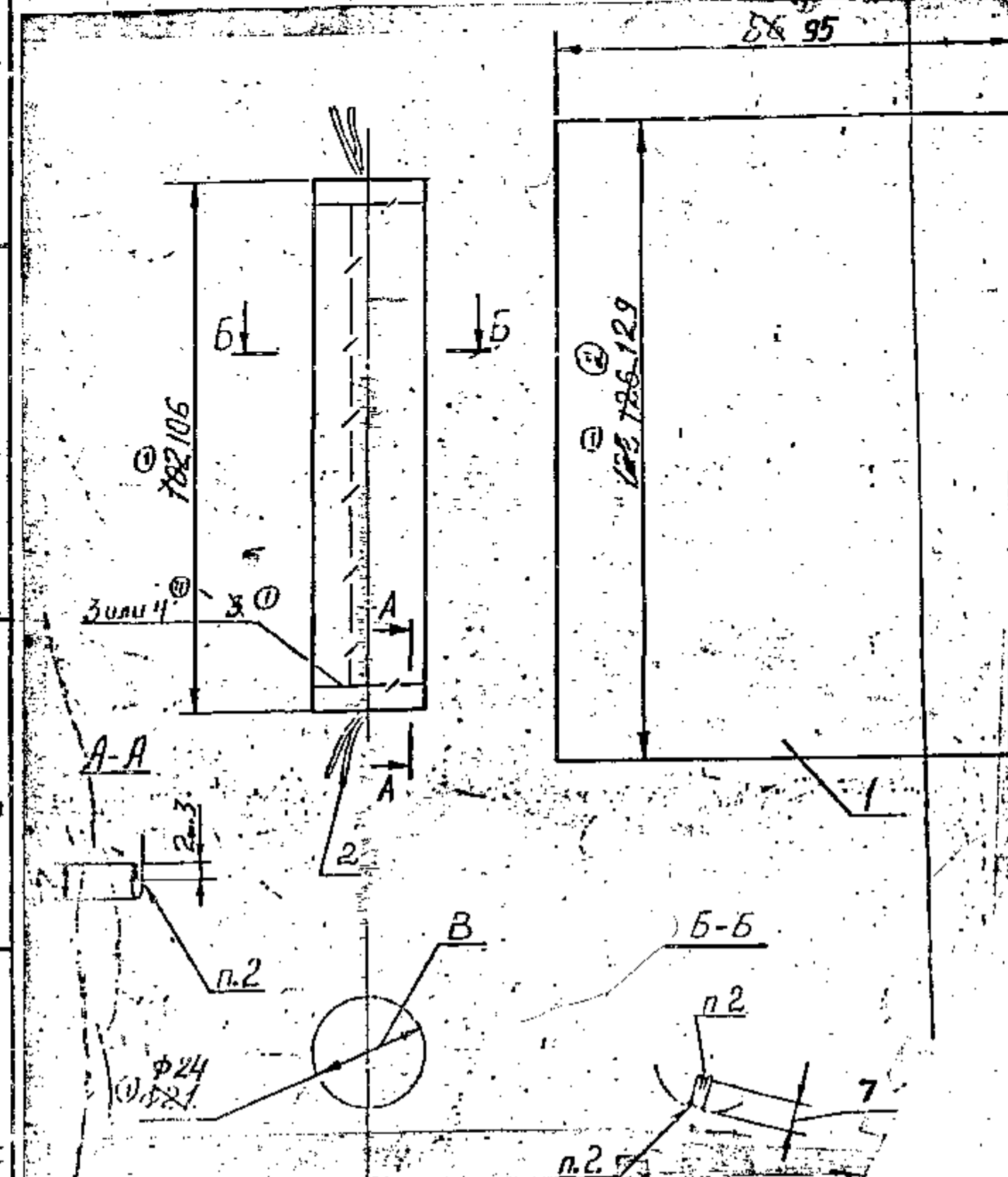
1. THE SIEVE FABRICS MUST BE MADE FROM THRON NATURAL SILK BY OPEN WORK OR MIXED (OPEN WORK AND LENEN) WEAVING.
2. THE WHOLE AREA OF THE FABRIC SHOULD CONSIST OF IDENTICAL HOLES.
3. NO. 55 & 61 ARE LIGHT SERIES CLASSIFIED. (DEPENDING UPON LINEAR DENSITY).
4. THE NUMBER OF THE FABRIC OF THE LIGHT SERIES IS DETERMINED BY THE NUMBER OF HOLES IN 10CM OF THE WARP AND WEFT.
5. AFTER WEAVING, THE SIEVE FABRICS ARE WASHED IN HOT WATER AND STITCHED IN WIDTH WITH THE APPLICATION OF DRESSING SOLUTION WHICH CONSISTS OF THE FOLLOWING: GELATINE, VASELINE OIL, OLEIC & ACETIC ACIDS, SOAP & FORMALINE.

PILOT SAMPLE SHOULD BE APPROVED BY A H S P BEFORE BULK PRODUCTION.

EST. WT. 0.001 kg. TO BE STAMPED OR MARKED WHERE INDICATED THIS = LETTERS)

ALL SHARP EDGES AND CORNERS TO BE REMOVED UNLESS OTHERWISE STATED MACHINED CORNERS TO HAVE R OUTSIDE R INSIDE EQUIVALENT CHAMFERS ARE PERMISSIBLE.

DRN	3-6-85	MATERIAL	USED ON - CB 329-05-7
DES			
APP			
DATE	3-6-85	CONTROLLERATE OF QUALITY ASSURANCE (HEAVY VEHICLES)	A V A O I
SCALE	1:1		
DIMENSIONS IN mm.			
TOLERANCE ON DIMNS UNLESS OTHERWISE STATED IS 2102-69			
ALL THREADS TO CONFORM TO		D S CAT NUMBER	DRAWING NUMBER
ISSUE	DATE	NATURE OF AMENDMENTS	CB 329-07-4 CB



1. ALTERNATIVE MATERIAL: SILK CLOTH FOR SIEVE No. 55 OR No. 61 GOST 4403-67.

2. TO BE STITCHED IN STITCHING MACHINE CAPRON THREAD 50K 164/33 TY 17PC/CP63-5999-78 OR SILK THREAD No 64/3 CTY 12559-63, STITCH SHOULD BE MADE AS PER STANDARD SPECIMEN.

3. DIMENSIONS "B" SHOULD BE CHECKED ALONG THE ENTIRE LENGTH ON THE MANDREL Ø23.5 mm.

ISSUE (BK 85-610)



USED ON

ITEM	DRAWING NUMBER	D S CAT NUMBER	DESCRIPTION	No OFF	REMARKS
	CB 329-07-4 CB		FILTER BAG ASSY	1/2	
	& ITEM LIST				
1			CAPRON-SIEVE N64		95X129 mm
			DST-17-46-71		
2			CAPRON THREAD 29 TAX		L=400mm
			2X3 OST 15-83-74		
3			CAPRON-THREAD 50K		L=2000mm
			(N64/3) TY 17PCØCP		MAY BE
			63-5999-78		SUBSTITUTED
4			CAPRON THREAD 15,6 TAX		L=2000mm
			2X3 OST 15-83-74		MAY BE
			EXPLANATORY NOTE		SUBSTITUTED
			SEE ASSY DRG		FOR ITEM 3

ISSUE	DATE	NATURE OF AMENDMENTS	ISSUE	DATE	NATURE OF AMENDMENTS
DRN	<i>Borislav</i>	CONTROLLERATE OF QUALITY ASSURANCE (HEAVY VEHICLES) AVADI			
CHD	<i>gnst</i>	TITLE			
TCD	<i>Narvanich</i>	FILTER BAG ASSY			
APRD	<i>1.2</i>	D S CAT NUMBER		ITEM LIST FOR	
DATE	3/2/88	SHT No 1 OF 1		CB 329-07-4 CB	

CB 329-05-7

ITEM LIST CREATED BASED ON RUSSIAN ORIGINAL
ISSUE 3 (BK 85-157)