

39  
F-22

356  
SUPPLY CODE  
U-01-1-1  
D90022

I/L CREATED BASED ON RUSSIAN ORIGINAL ISSUE - NIL

188.70.009cb-1Cb

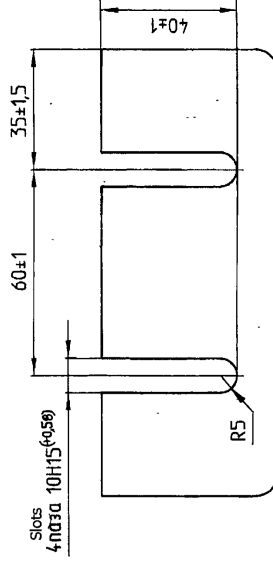
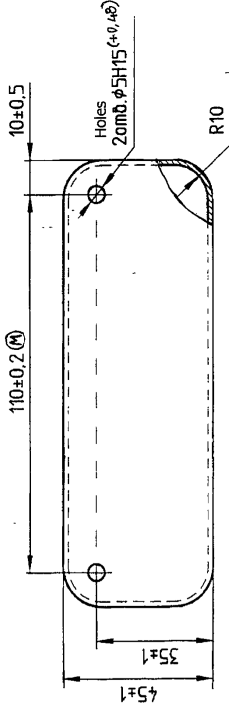
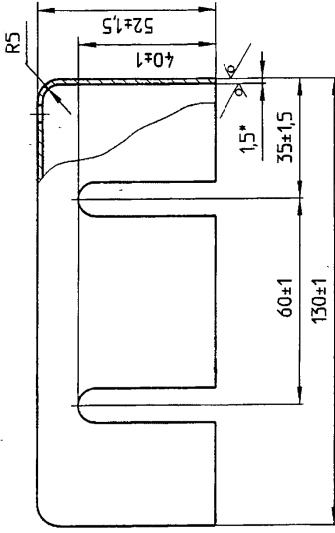
USED ON

ZONE	ITEM No.	DRAWING NUMBER	D S CAT NUMBER	DESCRIPTION	QTY	REMARKS
		172.70.300cbCb		RESISTOR BOXES ASSY.		
	1	172.70.299cbCb		BASE ASSY.	1	
	2	172.70.591		COVER	1	
	3	172.70.592		PANEL	1	
	4	172.70.593-1		RESISTOR	2	
	5	54.26.071A		SLEEVE	2	
	6	54.26.111-1A		SHOCK ABSORBER	2	
	8	GOST-7798-70		BOLT M6-6gx20.46.016	2	
	9	GOST-1491-80		SCREW M4-6gx25.46.016	4	
	10	GOST-1491-80		SCREW M4-6gx30.46.016	2	
ISSUE	DATE	NATURE OF AMENDMENTS	ISSUE	DATE	NATURE OF AMENDMENTS	
DRN	DATE	NATURE OF AMENDMENTS	ISSUE	DATE	NATURE OF AMENDMENTS	
CHD	DATE	NATURE OF AMENDMENTS	ISSUE	DATE	NATURE OF AMENDMENTS	
APPD	DATE	NATURE OF AMENDMENTS	ISSUE	DATE	NATURE OF AMENDMENTS	
DRN: <i>van</i>		TITLE: <i>RESISTOR BOXES ASSY.</i>		D S CAT NUMBER		
CHD: <i>С. Голубов</i>		TITLE: <i>RESISTOR BOXES ASSY.</i>		ITEM LIST FOR		
APPD: <i>Минин</i>		TITLE: <i>RESISTOR BOXES ASSY.</i>		172.70.300cbCb		
DATE: 16.4.04		SHT. No. 1 OF 2				



DRAWING NUMBER  
172.70.591

SHEET No. 1 OF 1



1. Материал-заменибель лист 1.5 ГОСТ 19904-90 К33085-И-15 ГОСТ 16523-97
2. Допускается изготовление путем сварки ГОСТ 14771-76-Y4-A2, без фторидки радиусов R5 и R10мм.
3. \* Размер для справок.
4. Покрытие всех поверхностей лак бакелитовый ЛБС-1.
5. Остальные требования по 520.TY1.

1. Alternate material: sheet 1.5 GOST 19904-90 К33085-И-15 GOST 16523-97
2. May be made by welding GOST 14771-76-Y4-A 2 with out forming radii R 5 and R 10 mm.
3. \*Dimension. for reference.
4. Coating of all surfaces- bakelite varnish ЛБС-1. Requirements as per 520.TY5.
5. Other requirements as per 520.TY1.

Rz250  
✓

356

SUPPLY CODE  
U-01-1-4  
D 90216

F-110  
79

SIZE A2

DRG. INDIANISED BASED ON RUSSIAN ORIGINAL ISSUE - NIL

DRN		<i>Revised</i>	MATERIAL: SHEET 1.5 GOST 19904-90 K33085-И-15 GOST 16523-97	USED ON: 172.70.300cbCb
CHD		<i>A. D. W.</i>	КЗ3085-И-15 GOST 16523-97	
APPD		<i>A. D. W.</i>	КЗ3085-И-15 GOST 16523-97	
DATE		29.10.04	CONTROLLERATE OF QUALITY ASSURANCE (HEAVY VEHICLES)	AVADI
SCALE		1:1	TITLE:	COVER
DIMENSIONS		in mm.	TOLERANCE ON DIMS UNLESS OTHERWISE STATED IS: 2102-69	D S CAT NUMBER DRAWING NUMBER 172.70.591
ISSUE		DATE	NATURE OF AMENDMENTS	

PILOT SAMPLE SHOULD BE APPROVED BY A. H. S. P  
BEFORE BULK PRODUCTION.

EST. WT. (KG) TO BE STAMPED OR MARKED WHERE  
INDICATED THIS # ( LETTERS)  
0.212

ALL SHARP EDGES AND CORNERS TO BE REMOVED UNLESS  
OTHERWISE STATED MACHINED CORNERS TO HAVE R. OUT.  
SIDE R. INSIDE EQUIVALENT CHAMFERS ARE PERMISSIBLE.

356

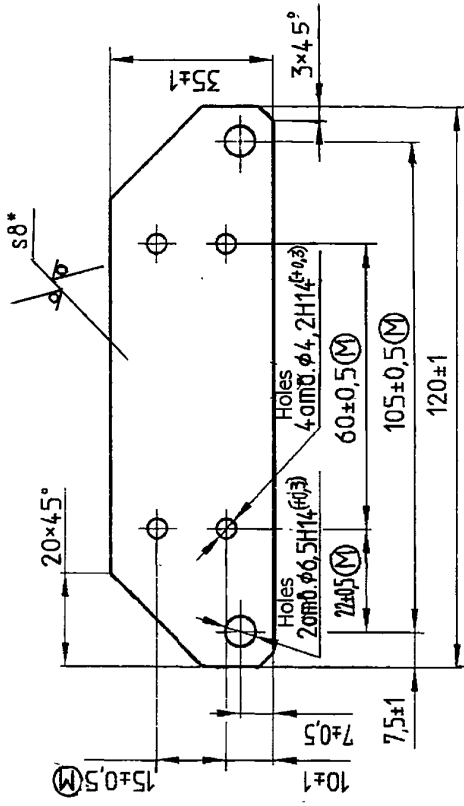
SUPPLY CODE  
U-01-14  
D 90216

F-110  
79

SIZE A3

DRAWING NUMBER  
172.70.592

SHEET No. 1 OF 1



1. Допускается изготовление из асбестоцементной доски любой толщины путем механической обработки.
2. Расслоение и трещины не допускаются.
- Допускается местное скалывание кромок не более 1 мм.
3. Допускается изготовление панели методом прессования.
4. \*Размер для справок.
5. Остальные требования по 520.ТУ1.

1. May be made from asbestos board of any thickness by machining.
2. Scaling and cracks is not allowed. Local chipping of edges should not exceed 1 mm.
3. Manufacturing of panel by pressing method is permitted.
4. \*Dimension for reference.
5. Other requirements as per 520.TY1.

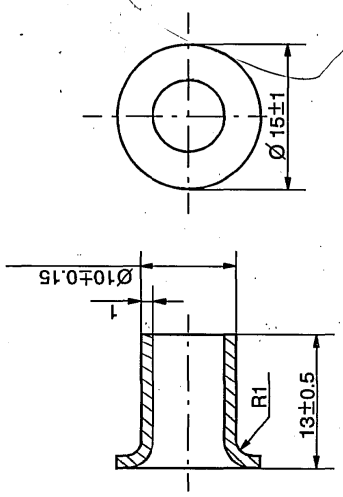
Rz80 ✓(✓)

PILOT SAMPLE SHOULD BE APPROVED BY A H S P BEFORE BULK PRODUCTION.		DRN	Raw	MATERIAL:-	USED ON:-
EST. WT. (kg)	0.032	CHD	A. Tomi	Asbestos cement board 400-B	172.70.300cbCb
ALL SHARP EDGES AND CORNERS TO BE REMOVED UNLESS OTHERWISE STATED MACHINED CORNERS TO HAVE R OUT-SIDE R INSIDE EQUIVALENT CHAMFERS ARE PERMISSIBLE.		APPD	Raw	GOST 4248-92	
TO BE STAMPED OR MARKED WHERE INDICATED THUS # ( LETTERS)		DATE	29-10-04	CONTROLLERATE OF QUALITY ASSURANCE (HEAVY VEHICLES) AVADI	
DIMENSIONS IN mm		SCALE:-	1:1	TITLE:-	
TOLERANCE ON DIMNS UNLESS OTHERWISE STATED IS: 2102-69		PANEL			
ALL THREADS TO CONFORM TO		D S CAT NUMBER			
ISSUE		DRAWING NUMBER			
DATE		172.70.592			
NATURE OF AMENDMENTS					

DRAWING NUMBER  
**54.26.071A**

SHEET No. 1 OF 1

**EXPLANATORY NOTE:-**  
9. REFERENCE MATERIAL QUOTED : TUBE 10x1 GOST 8734-75  
B20 GOST 8733-74



TUBE WITH EXTERNAL DIAMETER 10±0.15 mm AND WALL THICKNESS 1±0.12 mm AS PER GOST 8734-75 OF STEEL GRADE 20 AND SUPPLIED WITH MECHANICAL PROPERTIES AND CHEMICAL COMPOSITION AS PER GROUP B GOST 8733-74 AND MANUFACTURED IN ACCORDANCE WITH STEEL GRADE 20 GOST 1050-74. REFERENCE NOTE 4 ON ALTERNATIVE MATERIAL : B 10 GOST 8733-74.

TUBE WITH EXTERNAL DIAMETER 10±0.15 mm AND WALL THICKNESS 1±0.12 mm AS PER GOST 8734-75 OF STEEL GRADE 10 AND SUPPLIED WITH MECHANICAL PROPERTIES AND CHEMICAL COMPOSITION AS PER GROUP B GOST 8733-74 AND MANUFACTURED IN ACCORDANCE WITH STEEL GRADE 10 GOST 1050-74.

- BURRS ARE NOT ALLOWED.
- COLLAR MAY HAVE MAXIMUM 3 TEARS OR CRACKS NOT EXCEEDING 2 mm IN LENGTH.
- TO BE GALVANISED REQUIRED THICKNESS OF ZINC COAT 0.02 mm MIN REFER TO EXISTING SPECIFICATIONS ON GALVANISING.
- ALTERNATIVE MATERIAL : B 10 GOST 8733-74.
- THINNING OF RIVET COLLAR TO 0.6 mm IS ALLOWED.
- ALTERNATIVE MATERIAL : TUBE M3 10x1 GOST 617-72. TO BE TINNED ALL AROUND WITH SOLDER ПOC-40 (GOST 21930-76 OR GOST 21931-76).
- QUALITY OF COATING IN HOLE NEED NOT BE CHECKED.
- ALTERNATIVE MATERIAL : SHEET STEEL 10KT-5-IIГ AND 10KT-5-IIIГ GOST 16523-70 OPEN-HEARTH.

a) CHEMICAL COMPOSITION % AS PER GOST 1050-74 :-

GRADE OF STEEL	C	Si	Mn	Cr (MAX)
10	0.07 - 0.14	0.17 - 0.37	0.35 - 0.65	0.15
20	0.17 - 0.24	0.17 - 0.37	0.35 - 0.65	0.25

NOTE :-

- CONTENTS OF SULPHUR 0.04% (MAX) & PHOSPHORUS 0.035% (MAX).
- RESIDUAL CONTENT OF COPPER & NICKEL SHOULD NOT EXCEED 0.25%.

(11) 188.70.008Cb-5Cb  
\*\*\* 188.70.008Cb-6Cb

b) MECHANICAL PROPERTIES AS PER GOST 8733-74.

GRADE OF STEEL	TENSILE STRENGTH Kgf/mm <sup>2</sup>	ELONGATION %	YIELD POINT Kgf/mm <sup>2</sup>	DRN	
				Sd/=	Sd/=
10	35	24	21		
20	42	21	25		

(11A) 188.60cb-5Cb  
172.70.008cb-28Cb  
+72-70-008cb-22Cb-  
172.70cb-24Cb  
54.26.112cb-6Cb  
172.70.249cbCb  
+72-70-172cb-1Cb-  
172.70.106cbCb  
172.70.008cb-24Cb 27Cb  
172.70cb-23Cb

MATERIAL :- TUBE 10x1 GOST 8734-75 ** B 20 GOST 8733-74 ***		USED ON :- 175.60.015cb-3Cb 175.60.043cbCb ** 172.86cb-5Cb ***	
CONTROLLEDATE OF QUALITY ASSURANCE (HEAVY VEHICLES) AVADI			
DRN		Sd/=	
CHD		Sd/=	
APPD		Sd/=	
DATE		30.06.86	
SCALE:-		2 : 1	
DIMENSIONS IN mm			
TOLERANCE ON DIMNS UNLESS OTHERWISE STATED IS : 2102-69			
ALL THREADS TO CONFORM TO			
TITLE:-		RIVET	
D S CAT NUMBER		DRAWING NUMBER	
54.26.071A		54.26.071A	

(11B) ALT. MATL: CDS-4 TO IS: 3074-79.

PILOT SAMPLE SHOULD BE APPROVED BY A H S P BEFORE BULK PRODUCTION.

EST. WT. (kg) TO BE STAMPED OR MARKED WHERE INDICATED THUS # ( LETTERS)

0.0036

ALL SHARP EDGES AND CORNERS TO BE REMOVED UNLESS OTHERWISE STATED MACHINED CORNERS TO HAVE R OUT-SIDE R INSIDE EQUIVALENT CHAMFERS ARE PERMISSIBLE.

356

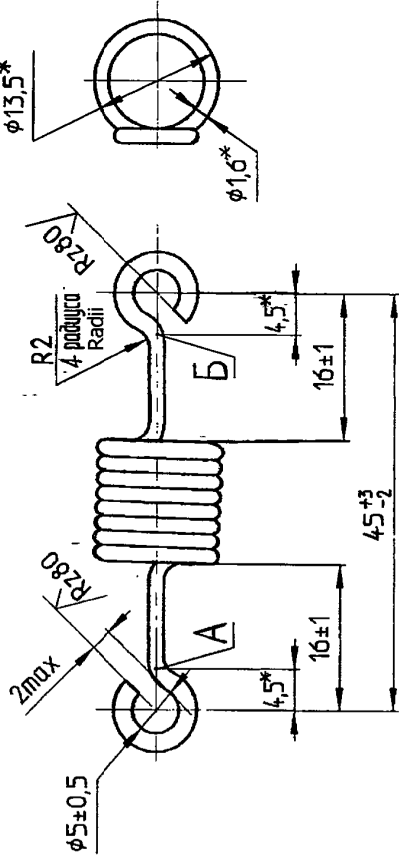
SUPPLY CODE  
U-01-14  
D 90216



SIZE A3

DRAWING NUMBER  
172.70.593-1

SHEET No. 1 OF 1



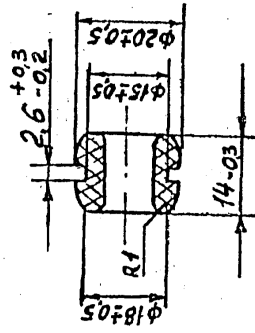
1. Направление намотки сопротивления любое.
2. Число рабочих витков 7.
3. Сопротивление рабочей длины (между точками А и Б) проволоки должно быть  $0,15 \pm 0,015$  Ом. При замере сопротивления концы растянуть, исключив касание между витками.
4. Допускается намотка сопротивления с зазором. При этом общая длина сопротивления должна быть не более 60 мм.
5. \*Размеры для справок.
6. Материал - заменитель проволоки 1,6-X20H80 ТУ14-1-3224-81.
7. Остальные требования по 520.ТУ1.

1. Direction of winding of resistor - any.
2. Number of working turns - 7.
3. Resistance of working length (between points A and B) of wires should be  $0.15 \pm 0.015$  ohm. During measuring resistance, ends to be expanded without touching between turns.
4. Winding of resistor with clearance is allowed. During this total length of resistor should be not more than 60 mm.
5. \*Dimensions for references.
6. Alternate material wire 1.6-X20H80 ТУ 14-1-3224-81.
7. Other requirements as per 520.TY1.

PILOT SAMPLE SHOULD BE APPROVED BY A H S P BEFORE BULK PRODUCTION.		MATERIAL:- WIRE 1.6-X20H80-H GOST 12766.1-90		USED ON:- 172.70.300cbCb	
EST. WT. (kg) 0.005	TO BE STAMPED OR MARKED WHERE INDICATED THUS # ( LETTERS )	DRN <i>Handwritten</i>	CHD <i>Handwritten</i>	APPD <i>Handwritten</i>	DATE 29.10.84
ALL SHARP EDGES AND CORNERS TO BE REMOVED UNLESS OTHERWISE STATED MACHINED CORNERS TO HAVE R OUT-SIDE R INSIDE EQUIVALENT CHAMFERS ARE PERMISSIBLE.		SCALE:- 2:1		CONTROLLEATE OF QUALITY ASSURANCE (HEAVY VEHICLES) AVADI	
TITLE:- <b>RESISTOR</b>		DIMENSIONS IN mm		D S CAT NUMBER 172.70.593-1	
NATURE OF AMENDMENTS		TOLERANCE ON DIMNS UNLESS OTHERWISE STATED IS : 202-09		DRAWING NUMBER	
ISSUE	DATE	CONFORM TO		172.70.593-1	

DRAWING NUMBER  
54.26.111-1A

SHEET No. 1 OF 1



**L1 EXPLANATORY NOTE :-**

5. REFERENCE MATERIAL QUOTED :- RUBBER 3311 TY 005 216-75. PHYSICAL AND MECHANICAL PROPERTIES OF RUBBER GRADE 3311 AS PER TY 38.005 1166-73 CORRESPOND TO TY 005 216-75

RAW RUBBER TYPE	H K.
TENSILE STRENGTH Kg/cm <sup>2</sup> MINIMUM	150
ELONGATION AT RUPTURE % MINIMUM	700
RELATIVE RESIDUAL ELONGATION AFTER RUPTURE % MINIMUM-MAXIMUM	25
HARDNESS (TWP) Kg/cm <sup>2</sup>	30-45
BRITTLENESS TEMPERATURE	-55°C
DENSITY g/cm <sup>3</sup>	1.98 ± 0.05
WORKING MEDIUM	AIR & WATER
WORKING TEMPERATURE	-50°C TO +80°C

1. R1 ON EITHER SIDE OF HOLE Ø9.5 IS OPTIONAL.
2. ALTERNATE MATERIAL : RUBBER 1847. SPECIFICATIONS TY 005216 - 75.
3. REQUIREMENTS FOR FINISHED COMPONENT, IN COMPLIANCE WITH SPECIFICATIONS TY 005216 - 75, CODE No.253220.
4. SHIFT ALONG MOULD PARTING LINE NOT TO EXCEED 0.3mm.

- Ⓔ 188.70.008Cb-5Cb
- 188.70.008Cb-6Cb
- Ⓕ 172 ZM 66 Cb
- Ⓖ 175.60.015Cb-3Cb
- 175.60.043CbCb
- Ⓖ 188.66cb-3Cb
- Ⓖ 188.60cb-5Cb
- Ⓖ 188.34cb-1Cb

\*\* USED ON  
172.70cb-23Cb, 172.70.106cbCb,  
172.70cb-24Cb, 172.70.172cb-1Cb,  
172.70.249cbCb, 54.26.112cb-6Cb,  
172.70.008cb-21Cb, 172.71cb-19Cb,  
172.70.008cb-22Cb, 172.71cb-20Cb.

Ⓔ ALT. MATL: RUBBER GRADE CR1 TO SPECN. CQA(HV)/CR

DRN	- Sd -	MATERIAL :-	USED ON :-
CHD	- Sd -	RUBBER 3311 SPON	176.34cb-2Cb
APPD	- Sd -	TY 005 216 - 75	172.86cb-5Cb
DATE		CONTROLLERATE OF QUALITY ASSURANCE (HEAVY VEHICLES)	AVADI
SCALE:-	1 : 1	TITLE:-	
DIMENSIONS IN mm		SHOCK ABSORBER	
TOLERANCE ON DIMNS UNLESS OTHERWISE STATED IS : 2102-69		D S CAT NUMBER	
ALL THREADS TO CONFORM TO		DRAWING NUMBER	
NATURE OF AMENDMENTS		54.26.111-1A	
ISSUE	DATE	DATE	DATE
8H	21.10.11	Authy Nofn No.188 A .56-08	
8G	25.08.11	D.O CORRECTION	
8F	1.11.07	AS PER KIT LIST No. CQA(HV)/SET/0031	
8E	13.2.07	Lt.No. 81312/CQA(HV)/DB-III/Alt. Matl. dt.12.10.06	
8D	3-01-05	AS PER KIT LIST No.CQA(HV)/SET/0018	
8C	12.7.04	N OF A No.CQA(HV)/T90/60/001	
8B	5.7.04	N OF A No.CQA(HV)/T90/60/001	
8A	15.4.04	N OF A No.CQA(HV)/T90/34/001	
L1	9.11.89	EXPLANATORY NOTE ADDED.	

PILOT SAMPLE SHOULD BE APPROVED BY A H S P BEFORE BULK PRODUCTION.

EST. WT. (KG) 0.0036 TO BE STAMPED OR MARKED WHERE INDICATED THUS # ( LETTERS)

ALL SHARP EDGES AND CORNERS TO BE REMOVED UNLESS OTHERWISE STATED MACHINED CORNERS TO HAVE R OUT-SIDE R INSIDE EQUIVALENT CHAMFERS ARE PERMISSIBLE.