

USED ON
765-58-01202 2 2

USED ON
675-58-01133 2 2

Unless otherwise specified

PROVISIONALLY
SEALED.

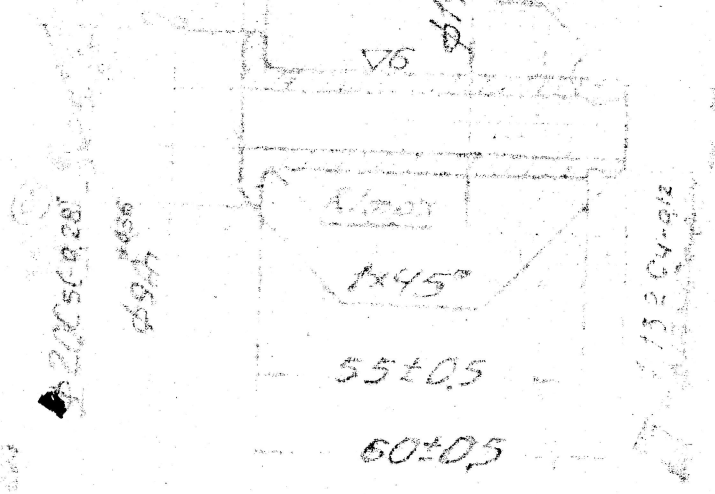
ARMY VERSION

409-015

101
14X3-0107

1291
1925

ROOMAX
89



00000-01	EQ. MATERIAL A/EPTL
(A)	GRADE AS-SPECIFIED

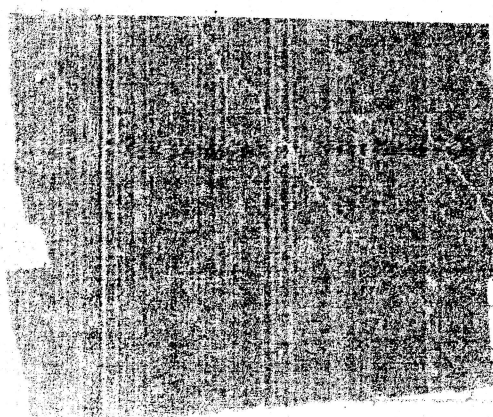
00013	DIS. CAT. PART. NO. ADDED	AMENDMENT 3
DIAM. 90	DESCRIPTION WAS "SHAFT"	
1007		
1007		

1. Blunt sharp edges.
2. Brinell hardness should be 302 to 255 (63.5 to 38).
3. Coating is zinc-plated, 9 microns thick, oiled, ^{chromated} and free of hydrogen embrittlement.
4. Alternate material is 41X, 31X, 6051 (541-71).

183
58

Coating may be absent on internal surface.

(A) EQ. MATERIAL - GRADE L2 CP4 N02 TO IS-5517-93.



(A) LV2/RCV - 3030-000711		
SHAFT (A)	765-58-222	
SHOULDERED	SHEETS	WEIGHT
	1 OF 1	0,053
		SCALE 1:1
45X 1001 6543-71		