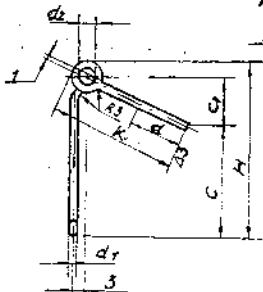


DRAWING NUMBER  
92 1106 232

ЗАПУСК



Толеранс  
допуска на свободное  
размеры по Т.М. по ГОСТУ  
TOLERANCE FOR FREE  
DIMENSIONS AS PER  
ACCURACY CLASS

2 бухла  
2 COILS

R3 TO BE BITTEN OFF  
откусить

COMPONENT СЕРИЯ - №	STAGE		H	C	G	K	d <sub>1</sub>	d <sub>2</sub>	Sec	COILS
	INNER	OUTER								
ES-2-3	73	75	46	28,3	13,7	40,1	2,93	4		

TO BE ANNEALED ON LENGTH d = 13 - 14mm.

TO BE MARKED ON A TAG.

COATING: Cd 9, CHROMATIZING.

HEAT TREATMENT - TEMPERING.

**EXPLANATORY NOTE:**

**1. REFERENCE MATERIAL QUOTED:**

SPRING WIRE CATEGORY II 'A' HIGH MANUFACTURING ACCURACY

2 (±0.02)mm DIA TO GOST 9389-75 AND MANUFACTURED IN ACCORDANCE WITH QUALITY CARBON STRUCTURAL STEEL GRADE 70 TO GOST 1050-74

**a) CHEMICAL COMPOSITION AS PER GOST 1050-74**

GRADE OF STEEL	CONTENT OF ELEMENTS %							
	C	Si	Mn	Cr	S	P	Cu	Ni
70	0.67 0.75	0.17 0.37	0.50 0.80	0.25	0.040	0.035	0.25	0.25

**b) MECHANICAL PROPERTIES OF CATEGORY II WIRE AS PER GOST 9389-75**

TENSILE STRENGTH Kg/mm <sup>2</sup>	No. OF BENDS Min (2d)	No. OF TWISTS Min
180 - 210	9	23

(1A) EQUIVALENT MATERIAL  
Gr. SM/SH IS:4454-2001

PILOT SAMPLE SHOULD BE APPROVED BY A H S P BEFORE BULK PRODUCTION

EST WT TO BE STAMPED OR MARKED WHERE INDICATED THIS \* LETTERS

ALL SHARP EDGES AND CORNERS TO BE REMOVED UNLESS OTHERWISE STATED MACHINED CORNERS TO HAVE R OUT-SIDE R INSIDE EQUIVALENT CHAMFERS ARE PERMISSIBLE

DRN	MATERIAL:	USED ON:
CHD	WIRE II A-2	СБ 5335-14-2, 92-1106-240
YLO	GOST 9389-75	92 1106 230
APPD	CONTROLLERATE OF INSPECTION (HEAVY VEHICLES)	
DATE	AVADI	
SCALE:	TITLE:	
DIMENSIONS IN mm	LOCK SPRING	
TOLERANCE ON DIMS UNLESS OTHERWISE STATED	D S CAT NUMBER	DRAWING NUMBER
ALL THREADS TO CONFORM TO		92 1106 232
ISSUE	DATE	NATURE OF AMENDMENTS
1A	16-8-10	4 <sup>th</sup> Att. Comm. Meeting Minutes
1	31-5-83	Point No.13 DT:26-10-09
		AUTH: НОТІ-ІІ. НТТ 46-120-88

12)

E A3





# THE HISTORY OF THE

## REPUBLIC OF THE UNITED STATES OF AMERICA

### FROM 1776 TO 1865

#### BY

W. H. CHAPMAN

Author of "The History of the United States of America from 1776 to 1865"

and "The History of the United States of America from 1865 to 1876"

and "The History of the United States of America from 1876 to 1899"

and "The History of the United States of America from 1899 to 1914"

and "The History of the United States of America from 1914 to 1929"

and "The History of the United States of America from 1929 to 1945"

and "The History of the United States of America from 1945 to 1960"

and "The History of the United States of America from 1960 to 1976"

and "The History of the United States of America from 1976 to 1999"

and "The History of the United States of America from 1999 to 2001"

and "The History of the United States of America from 2001 to 2009"

and "The History of the United States of America from 2009 to 2017"

and "The History of the United States of America from 2017 to 2021"

and "The History of the United States of America from 2021 to 2025"

and "The History of the United States of America from 2025 to 2030"

and "The History of the United States of America from 2030 to 2040"

NEW YORK

1876

1877

1878

1879

1880

1881

1882

1883

1884

1885

1886

1887

1888

1889

1890

1891

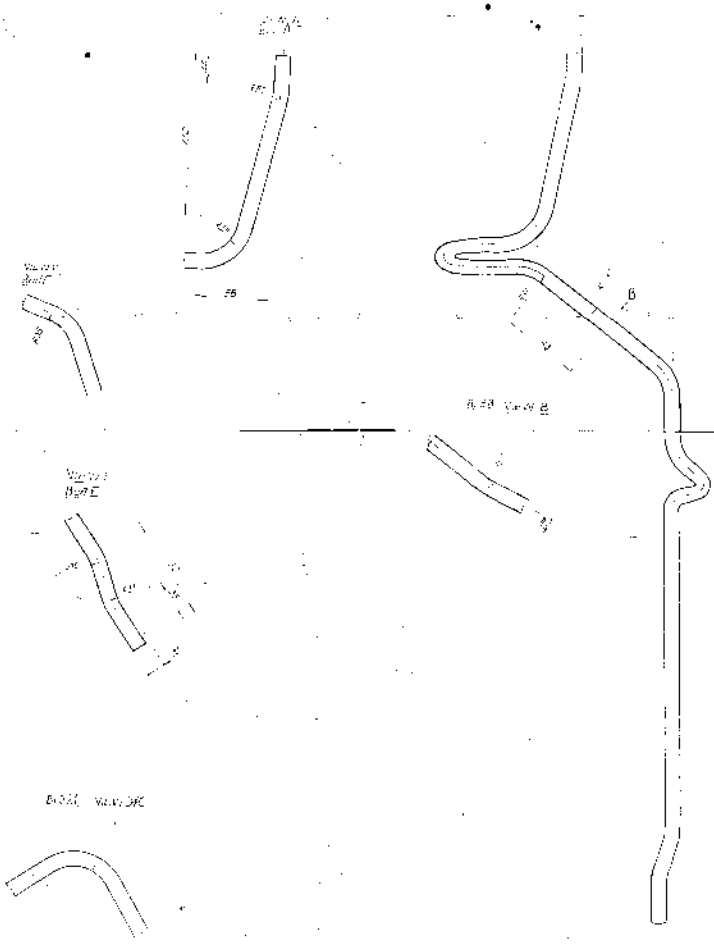
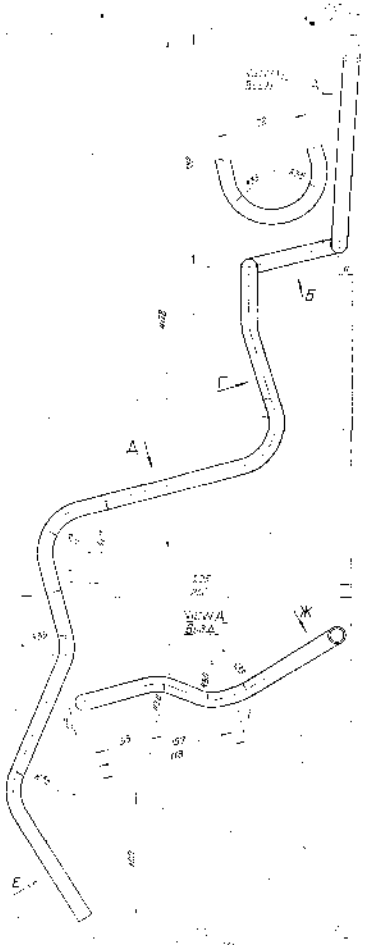
1892

1893

1894

1895

06-23 554



- 1. ...
- 2. ...
- 3. ...
- 4. ...
- 5. ...

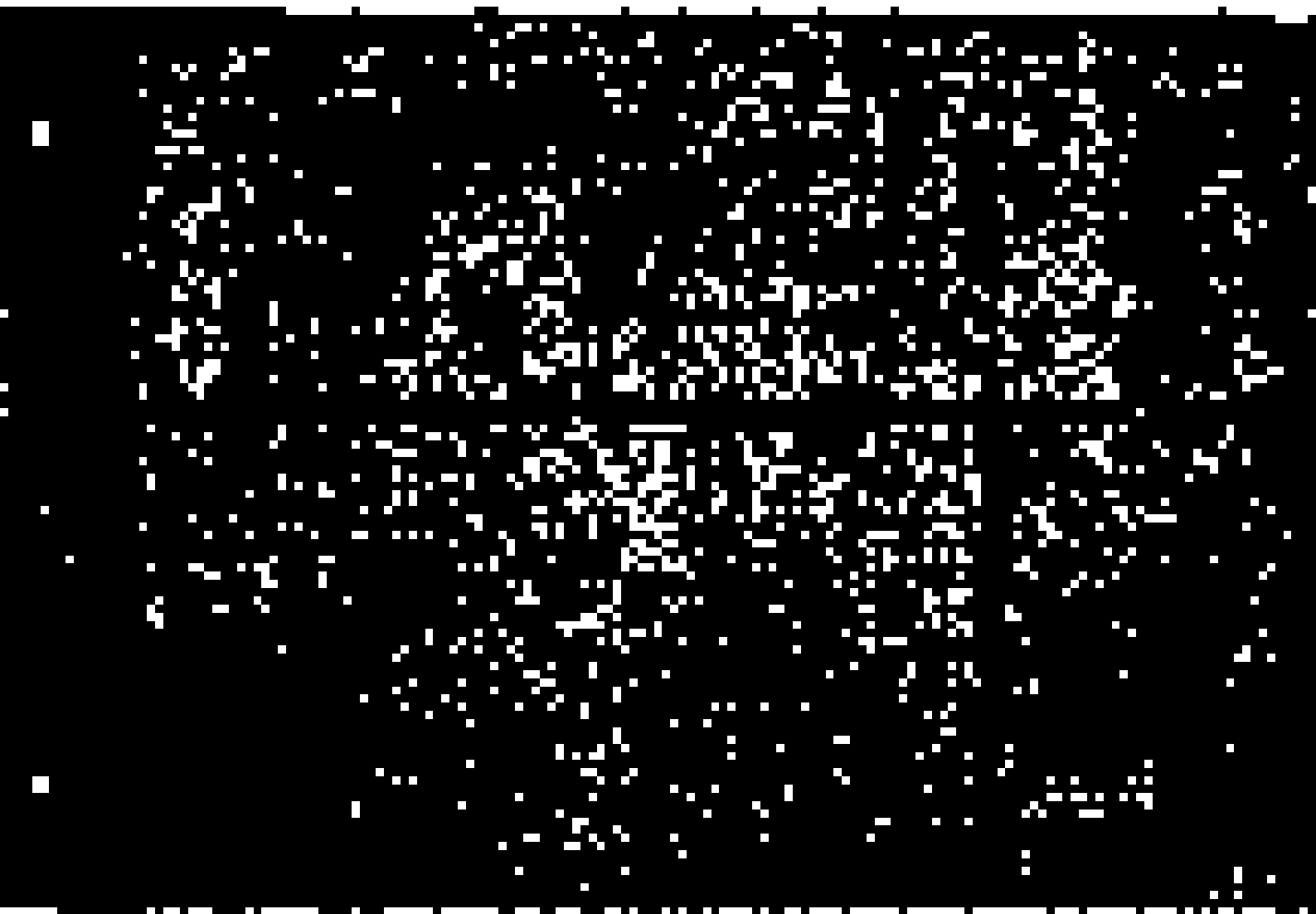
**LEGENDARY**

1. ...  
 2. ...  
 3. ...

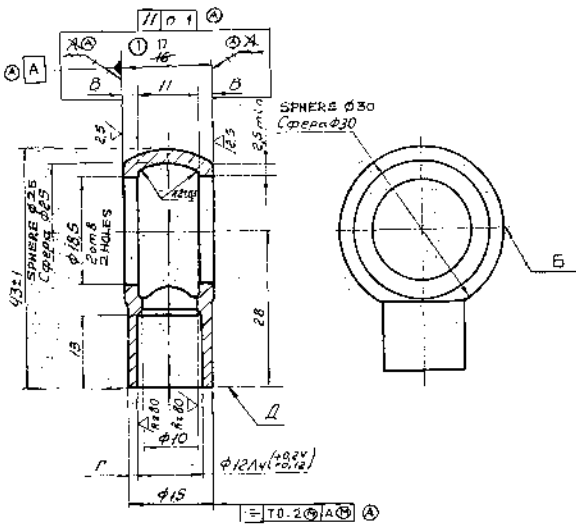
DATE	1	2	3	4	5	6	7	8	9	10
1950	...	...	...	...	...	...	...	...	...	...

- 1. ...
- 2. ...

Additional technical notes and specifications located at the bottom right of the page, including a small table and descriptive text.



DRAWING NUMBER  
3335 29



**EXPLANATORY NOTE**

11. REFERENCE MATERIAL QUOTED :

QUALITY CARBON STRUCTURAL STEEL GRADE 35 AND REFERENCE NOTE 1 ON ALTERNATE MATERIAL QUALITY CARBON STRUCTURAL STEEL GRADE 30, 40 AND 45 TO GOST 1050-74.

11) CHEMICAL COMPOSITION:

GRADE OF STEEL	CONTENT OF ELEMENTS %						REMARKS
	C	Si	Mn	Cr	S	P	
35	0.32 - 0.40	0.17 - 0.37	0.50 - 0.80	0.25	0.040	0.035	Ref. Matl.
30	0.27 - 0.35	0.17 - 0.37	0.50 - 0.80	0.25	0.040	0.035	Alt. Matl.
40	0.37 - 0.45	0.17 - 0.37	0.50 - 0.80	0.25	0.040	0.035	Alt. Matl.
45	0.42 - 0.50	0.17 - 0.37	0.50 - 0.80	0.25	0.040	0.035	Alt. Matl.

RESIDUAL CONTENT OF COPPER AND NICKEL SHOULD NOT EXCEED 0.25 % EACH.

11) MECHANICAL PROPERTIES UNDER NORMALISED CONDITION.

GRADE OF STEEL	ULTIMATE TENSILE STRENGTH Kgf/mm <sup>2</sup>	YIELD POINT Kgf/mm <sup>2</sup>	ELONGATION %	REDUCTION IN AREA %	IMPACT STRENGTH Kgf/cm <sup>2</sup>	REMARKS
35	46	32	20	45	7	Ref. Matl.
30	50	30	21	50	6	Alt. Matl.
40	58	34	19	65	6	Alt. Matl.
45	61	36	16	60	5	Alt. Matl.

12. REFERENCE NOTE 1 ON ALTERNATE MATERIAL: STEEL CASTING GRADE 20 П 35 П TO GOST 977-75.

12) CHEMICAL COMPOSITION

GRADE OF STEEL	CONTENT OF ELEMENTS %						
	C	Mn	Si	P	S	Cr	Ni
20 П	0.17 - 0.25	0.35 - 0.90	0.20 - 0.52	0.06	0.05	0.30	0.30
35 П	0.32 - 0.40	0.60 - 0.90	0.20 - 0.52	0.06	0.05	0.30	0.30

12) MECHANICAL PROPERTIES UNDER NORMALISED CONDITION.

GRADE OF STEEL	ULTIMATE TENSILE STRENGTH Kgf/mm <sup>2</sup>	YIELD POINT Kgf/mm <sup>2</sup>	ELONGATION %	REDUCTION IN AREA %	IMPACT STRENGTH Kgf/cm <sup>2</sup>
20 П	42	22	22	35	5.0
35 П	50	28	15	25	3.5

1. ALTERNATE MATERIAL : STEEL, GRADES 20П AND 35 П GOST 977-75 AND STEEL 30, 40 AND 45 GOST 1050-74.

2. UNSPECIFIED LIMIT DEVIATIONS OF DIMENSIONS AS PER ACCURACY CLASS 7 GOST 1010.

3. THICKNESS OF WALL "B" SHOULD NOT BE LESS THAN 2.5mm

4. VARIATION IN THICKNESS OF WALL "Г" SHOULD NOT EXCEED 0.2 mm.

5. NON-PARALLELISM OF SURFACES "A" SHOULD NOT EXCEED 0.1 mm.

6. MISALIGNMENT AND SKEWNESS OF SHANK AXIS RELATIVE TO SURFACE "A" SHOULD NOT EXCEED 0.3 mm ON A LENGTH OF THE SHANK.

7. ROUGH CYLINDRICAL SURFACE "B" UP TO 4 mm. WIDE IS ALLOWED ON TWO SIDES.

8. DELETED.

9. COATING: Cr 9, CHROMAZING AS PER INSTRUCTIONS

10. Cr 11 - 10% WITH ELIMINATION OF HYDROGEN ENBRITTEMENT.

11. THERE MAY BE NO COATING ON THE INTERNAL SURFACES AND AT THE PLACES OF DEFECTS OF CASTING.

12) ALTERNATE MATERIAL : STEEL 080 M40 (EN8) TO BS: 970 #1-T-1983 OR 35 C4 TO IS: 1570

PILOT SAMPLE SHOULD BE APPROVED BY A H S P BEFORE BULK PRODUCTION

EST. MASS 0.035 Kg TO BE STAMPED OR MARKED WHERE INDICATED THIS # LETTERS!

ALL SHARP EDGES AND CORNERS TO BE REMOVED UNLESS OTHERWISE STATED MACHINED CORNERS TO HAVE R OUTSIDE R INSIDE EQUIVALENT CHAMFERS ARE PERMISSIBLE.

DRM	CHD	TCD	APPD	DATE	SCALE	DIMENSIONS IN mm	TOLERANCE ON EDGES UNLESS OTHERWISE STATED	ALL THREADS CONFORM TO	MATERIAL: STEEL 35 GOST 1050-74	USED ON: 05 3335 07 19
FA	11-7-09	3rd ALTERATION COMM. MINUTES POINT 6, DATE 27.2.09	1	09.12.08 (NOT IN. ND: 30-05 (P-158))	7.2.97	AUTHY. NOTN. No. BK 0.6-2.4.0	ISSUE DATE	NATURE OF AMENDMENTS	CONTROLLERATE OF INSPECTION (HEAVY VEHICLES) AVAD	TITLE: SWIVEL ELBOW
									D S CAT NUMBER	DRAWING NUMBER 3335 29



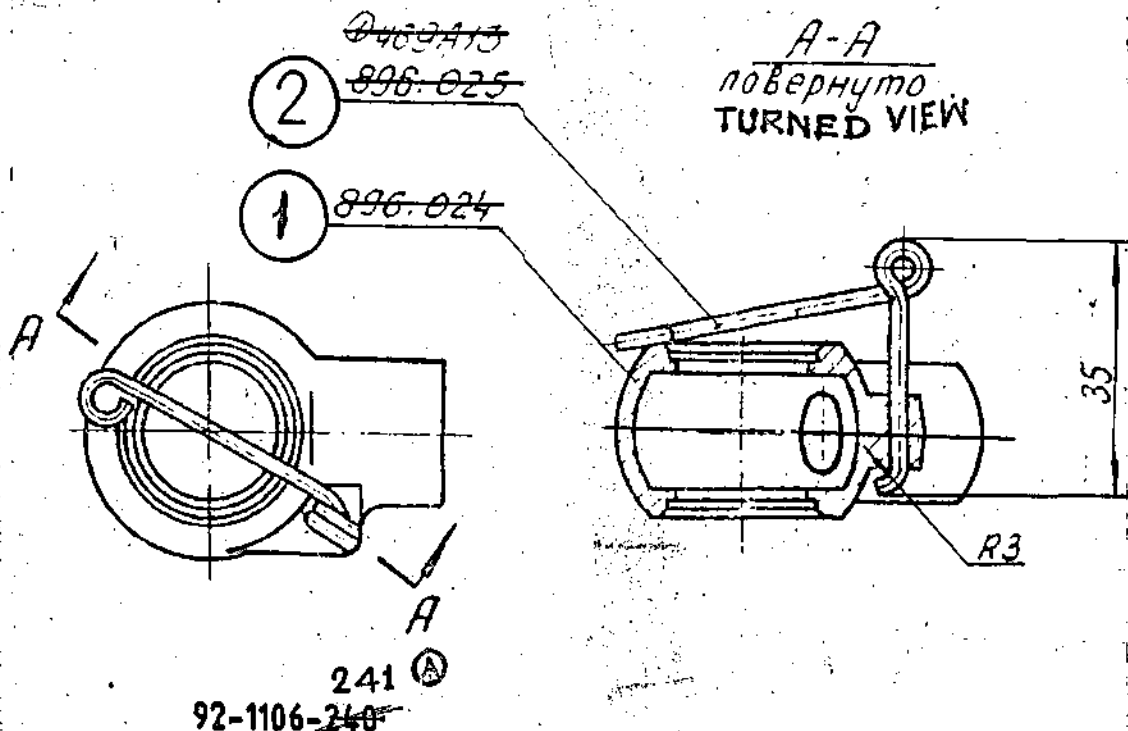






DRAWING NUMBER

CB 3335 14 2



1. UNIT ~~896-070~~, PURCHASED, SHOULD BE FURNISHED ALONG WITH ASSEMBLY ~~896-4-HTП-46~~
2. RETAINING SPRING MAY BE INSTALLED AFTER SOLDERING OF SWIVEL ELBOW.
3. COMPONENTS 92-1106-232, 92-1106-241 B.O. SUPPLIED

PILOT SAMPLE SHOULD BE APPROVED BY A H S P BEFORE BULK PRODUCTION

		EST. WT. 0.085 Kg	TO BE STAMPED OR MARKED WHERE INDICATED THUS # ( LETTERS )
		ALL SHARP EDGES AND CORNERS TO BE REMOVED UNLESS OTHERWISE STATED MACHINED CORNERS TO HAVE R OUTSIDE R INSIDE EQUIVALENT CHAMFERS ARE PERMISSIBLE	
		MATERIAL:	USED ON: CB 332 00 11 CB 435 09 14
A	24-4-93	AUTHY. NOTN. No. BK86-27	
ISSUE	DATE	NATURE OF AMENDMENTS	
DRN		SCALE: 1 : 1	CONTROLLERATE OF INSPECTION (HEAVY VEHICLES) AVADI
CHD		DIMENSIONS IN mm	
TCD		TOLERANCE ON DIMNS UNLESS OTHERWISE STATED	TITLE: ROTATING ELBOW WITH SPRING
APPD		ALL THREADS TO CONFORM TO	D S CAT NUMBER.
DATE	5/6/22		DRAWING NUMBER CB 3335 14 2

SIZE A4









