

| CAT PART No. | NOMENCLATURE | No. PER ASSY. | DRAWING No. |
|----------------|---|---------------|---------------------|
| 1240-005009 | TELESCOPE SIGHTING, 5.56 mm RIFLE (INSAS) CASED, 101A | | |
| 1240-002648 | CASE CARRYING, TELESCOPE SIGHTING 5.56 mm RIFLE 101A | | RDE 2610 |
| V5/8115-002941 | BOX | 1 | IRDE 2610/1 |
| | RIVET, SOLID SNAP HD, BRASS | | |
| | Ø 2.0 X 8.0 LG IS 2907 | 8 | |
| | WASHER, FLAT, PUNCHED TYPE | | |
| | BRASS M2.0 IS 2016 | 8 | |
| V5/1040-000015 | LID | 1 | IRDE 2610/2 |
| | RIVET, SOLID SNAP HD, BRASS | | |
| | Ø 2.0 X 8.0 LG IS 2907 | 4 | |
| | WASHER, FLAT, PUNCHED TYPE | | |
| | BRASS M 2.0 IS 2016 | 4 | |
| | RIVET, SOLID SNAP HD, BRASS | | |
| | Ø 2.0 X 8.0 LG IS 2907 | 16 | |
| | WASHER, FLAT, PUNCHED TYPE | | |
| | BRASS M 2.0 IS 2016 | 16 | |
| | FOAM LOWER | 1 | IRDE 2610/3 |
| | FOAM UPPER | 1 | IRDE 2610/4 |
| 5340-177894 | HINGE, BUTT | 2 | IRDE 2610/5 (3 SHT) |
| | RIVET, SOLID SNAR HD, BRASS | | |
| | Ø 2.5 X 14.0 LG IS 2907 | 12 | |
| | WASHER, FLAT, PUNCHED TYPE | | |
| | BRASS M 2.5 IS 2016 | 12 | |
| 53-837341 | PLATE IDENTIFICATION | 1 | IRDE 2610/6 |
| | RIVET, SOLID SNAP HD, | | |
| | BRASS Ø 2.0 X 7.0 LG, IS 2907 | 2 | |
| | WASHER, FLAT, PUNCHED TYPE | | |
| | BRASS M-2 IS 2016 | 2 | |
| 9905-837340 | PLATE IDENTIFICATION | 1 | IRDE 2610/7 |
| | RIVET, SOLID SNAP HD, BRASS | | |
| | Ø 2.0 X 7.0 LG, IS 2907 | 2 | |
| | WASHER, FLAT, PUNCHED TYPE | | |
| | BRASS M2, IS 2016 | 2 | |

2041-I(P), 6503-I, 6810-I, 7020-I

| | | | |
|---------------------------|------------|------------|-----------------|
| PREPARED | TRACED | CHECKED | APPROVED |
| <i>Kul</i> | <i>Int</i> | <i>Int</i> | <i>P. D. E.</i> |
| SCHEDULE FOR DRG. No. | | | FOR DIRECTOR |
| IRDE 2610 | | | I. R. D. E. |
| SCHEDULE FOR CAT PART No. | | | DEHRADUN. |
| 1240-002648 | | | 8.4.94 |
| AMENDMENTS | SIG. | DATE | (4) |
| | | | SHT. 1 OF 2 |

FOR TRADE USE
 Date of Issue 26.06.2020

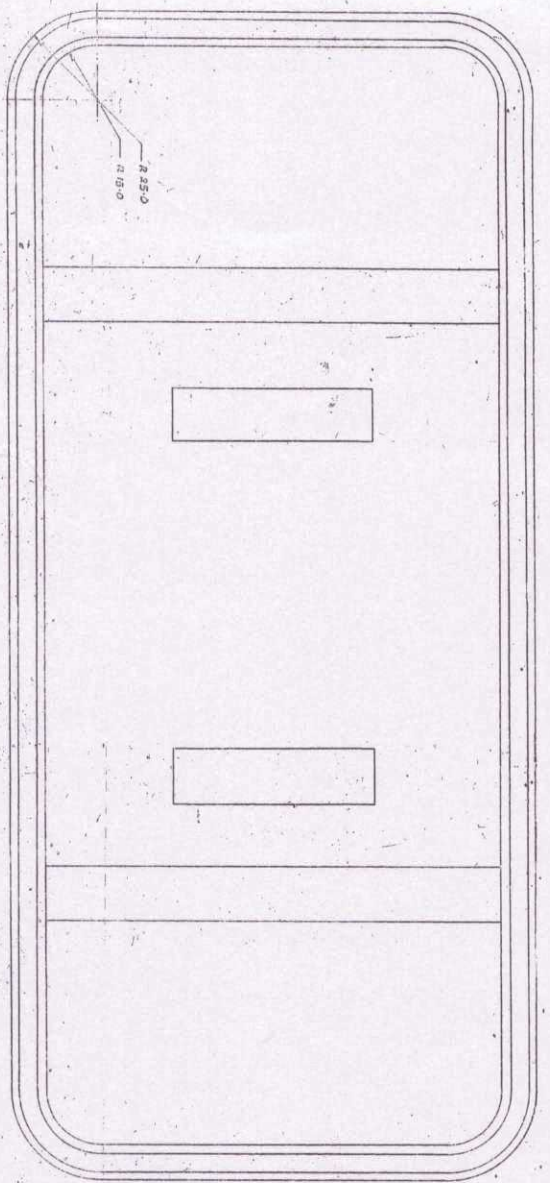
| CAT PART No. | SCHEDULE OF PARTS COMPRISING | प्रति असेम्बली NO. OF P.C.S. ASSY. | ड्रॉिंग सं. DRAWING No. |
|-----------------|---|------------------------------------|-------------------------|
| | FASTNER SET TURN LOCK | 2 | IRDE 1203/SA |
| | CLIP | 4 | IRDE 1613/8 |
| | TRADE ITEMS — | | |
| H-2/8305-000267 | STRAP WEB COTTON VOD O.G. COLOUR 38.0 WIDE X 2.5 THICK X 1300.0 LG. | 1 | |
| CH/8315-000036 | BUCKLE BRASS 38.0 mm | 2 | |
| CH/AA1884 | TIP BRASS 38.0 mm | 2 | |
| 8315-000048 | EYE - LET BRASS | 4 | |
| | CHORD OF SYNTHETIC RUBBER NITRILE BLACK, IRHD 51-60 Ø5.1 X 980 mm LG. | 1 | |
| H-2/8305-000267 | STRAP WEB, COTTON, VOD, O.G. COLOUR 38.0 WIDE X 2.5 THICK X 200 LG. | 1 | |

D.C. - 2041-I(P), 6503

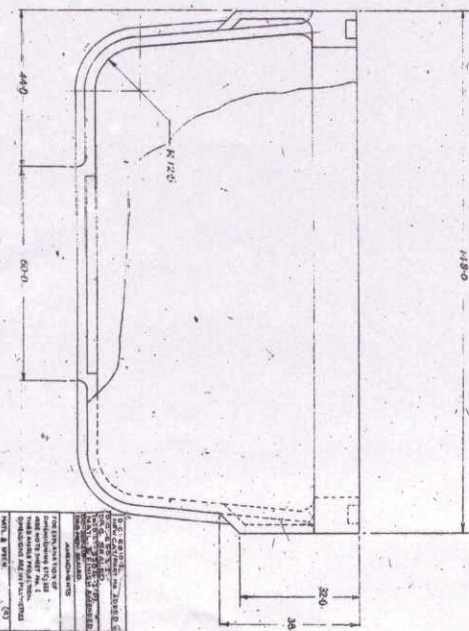
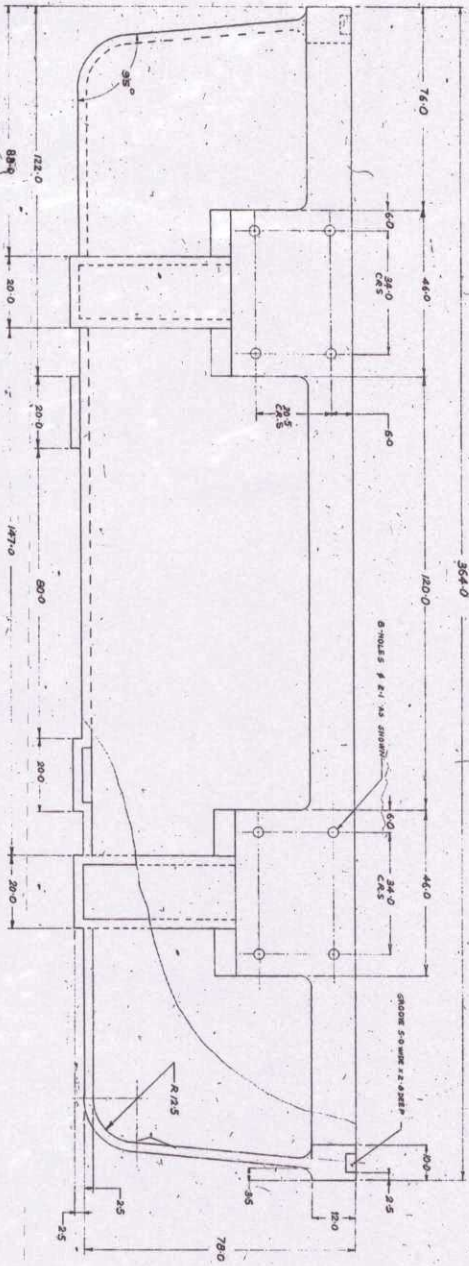
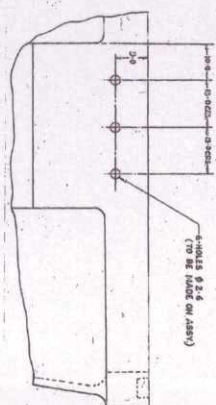
FOR TRADE COPY
Date of Issue

26.06.2022

| | | | | |
|--|---|--------------------|-------------------------------|---------------------------------------|
| | PREPARED KRR | TRACED | CHECKED <i>[Signature]</i> | APPROVED Sd/-KRR (T.D.S.) |
| | SCHEDULE FOR DRG. No. IRDE 2610 | | | FOR DIRECTOR I.R.D.E. DEHRADUN. |
| | SCHEDULE FOR CAT PART No. | | | |
| D.C.-6810-I. NEW CAT/PART No. ADDED | <i>[Signature]</i> | <i>[Signature]</i> | 27.12.06 | |
| D.C.-6503-I. CH. SEALED. | <i>[Signature]</i> | <i>[Signature]</i> | 10.7.01 | |
| D.C.-2041-I(P). CH. PROV. SEALED. | <i>[Signature]</i> | <i>[Signature]</i> | 3.12.96 | |
| AMENDMENTS | SIG. | DATE | SHT. 2 OF 2 | |



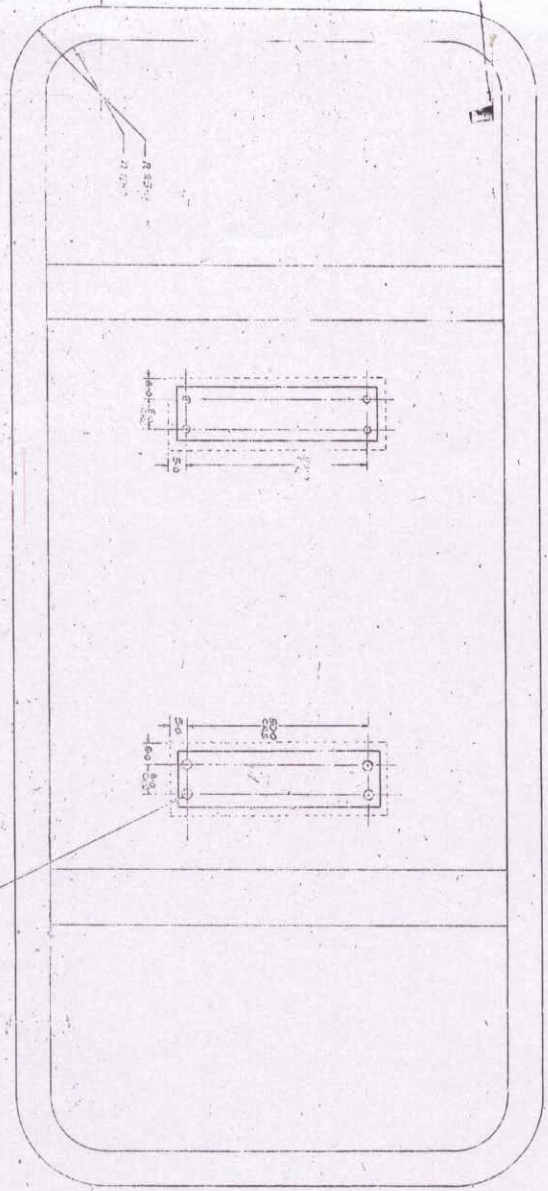
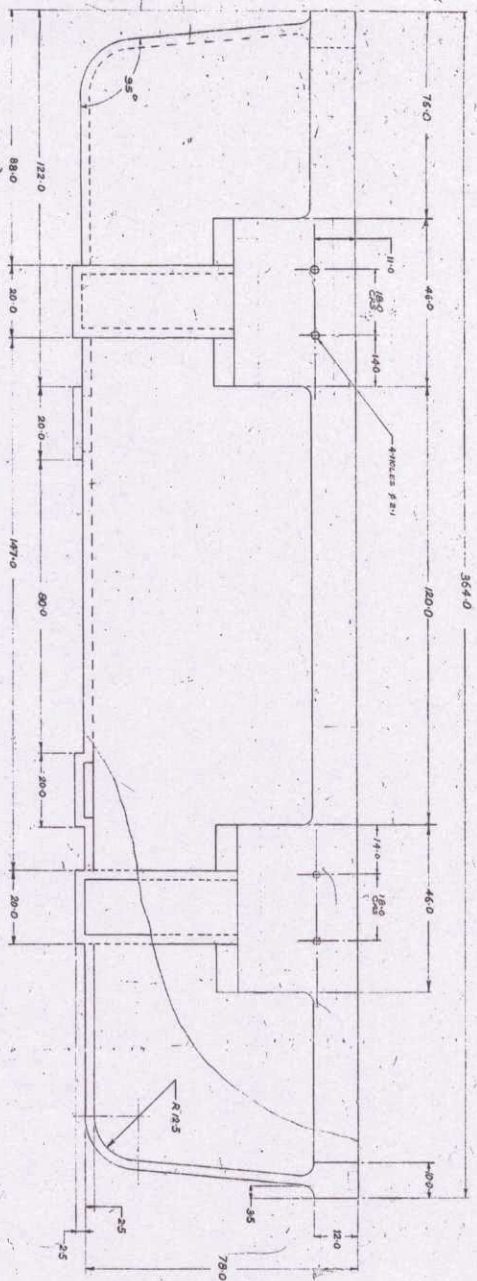
PART VIEW IN DIRECTION OF ARROW 'X'



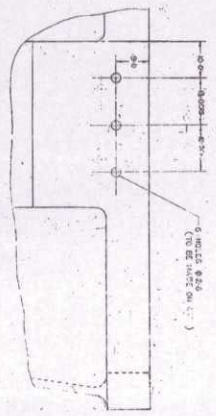
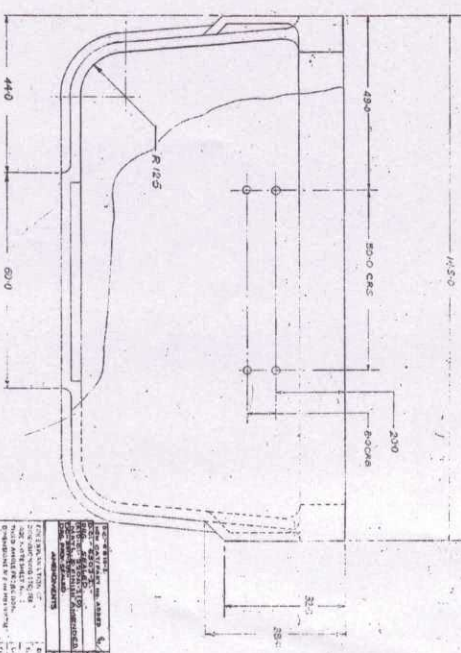
FOR REVIEW ONLY
 DATE OF ISSUE 26.06.2020

BOX

| | |
|--|-----------------------|
| 1. TITLE: BOX 2. DRAWING NO: DC-107-176, 21041 (9), 6823-2, 6823 3. REV: 01 4. DATE: 26.06.2020 5. DESIGNED BY: [Signature] 6. CHECKED BY: [Signature] 7. APPROVED BY: [Signature] 8. MATERIAL: [Blank] 9. QUANTITY: [Blank] 10. PART NO: [Blank] | |
| 11. PART NAME: BOX 12. PART NO: [Blank] | 13. PART NO: [Blank] |
| 14. PART NO: [Blank] | 15. PART NO: [Blank] |
| 16. PART NO: [Blank] | 17. PART NO: [Blank] |
| 18. PART NO: [Blank] | 19. PART NO: [Blank] |
| 20. PART NO: [Blank] | 21. PART NO: [Blank] |
| 22. PART NO: [Blank] | 23. PART NO: [Blank] |
| 24. PART NO: [Blank] | 25. PART NO: [Blank] |
| 26. PART NO: [Blank] | 27. PART NO: [Blank] |
| 28. PART NO: [Blank] | 29. PART NO: [Blank] |
| 30. PART NO: [Blank] | 31. PART NO: [Blank] |
| 32. PART NO: [Blank] | 33. PART NO: [Blank] |
| 34. PART NO: [Blank] | 35. PART NO: [Blank] |
| 36. PART NO: [Blank] | 37. PART NO: [Blank] |
| 38. PART NO: [Blank] | 39. PART NO: [Blank] |
| 40. PART NO: [Blank] | 41. PART NO: [Blank] |
| 42. PART NO: [Blank] | 43. PART NO: [Blank] |
| 44. PART NO: [Blank] | 45. PART NO: [Blank] |
| 46. PART NO: [Blank] | 47. PART NO: [Blank] |
| 48. PART NO: [Blank] | 49. PART NO: [Blank] |
| 50. PART NO: [Blank] | 51. PART NO: [Blank] |
| 52. PART NO: [Blank] | 53. PART NO: [Blank] |
| 54. PART NO: [Blank] | 55. PART NO: [Blank] |
| 56. PART NO: [Blank] | 57. PART NO: [Blank] |
| 58. PART NO: [Blank] | 59. PART NO: [Blank] |
| 60. PART NO: [Blank] | 61. PART NO: [Blank] |
| 62. PART NO: [Blank] | 63. PART NO: [Blank] |
| 64. PART NO: [Blank] | 65. PART NO: [Blank] |
| 66. PART NO: [Blank] | 67. PART NO: [Blank] |
| 68. PART NO: [Blank] | 69. PART NO: [Blank] |
| 70. PART NO: [Blank] | 71. PART NO: [Blank] |
| 72. PART NO: [Blank] | 73. PART NO: [Blank] |
| 74. PART NO: [Blank] | 75. PART NO: [Blank] |
| 76. PART NO: [Blank] | 77. PART NO: [Blank] |
| 78. PART NO: [Blank] | 79. PART NO: [Blank] |
| 80. PART NO: [Blank] | 81. PART NO: [Blank] |
| 82. PART NO: [Blank] | 83. PART NO: [Blank] |
| 84. PART NO: [Blank] | 85. PART NO: [Blank] |
| 86. PART NO: [Blank] | 87. PART NO: [Blank] |
| 88. PART NO: [Blank] | 89. PART NO: [Blank] |
| 90. PART NO: [Blank] | 91. PART NO: [Blank] |
| 92. PART NO: [Blank] | 93. PART NO: [Blank] |
| 94. PART NO: [Blank] | 95. PART NO: [Blank] |
| 96. PART NO: [Blank] | 97. PART NO: [Blank] |
| 98. PART NO: [Blank] | 99. PART NO: [Blank] |
| 100. PART NO: [Blank] | 101. PART NO: [Blank] |



L1D



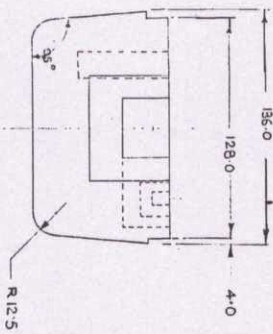
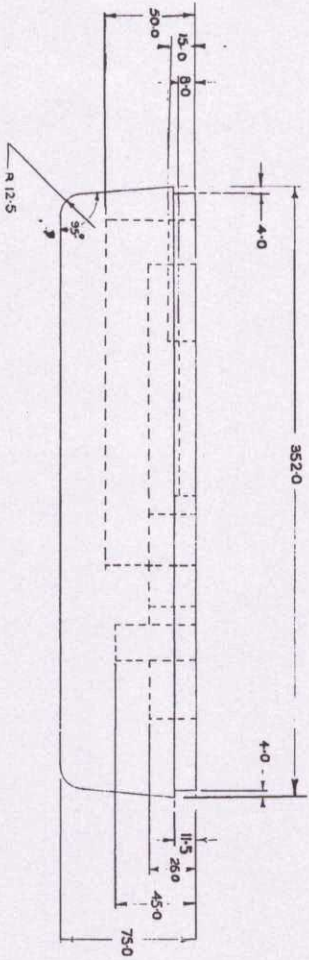
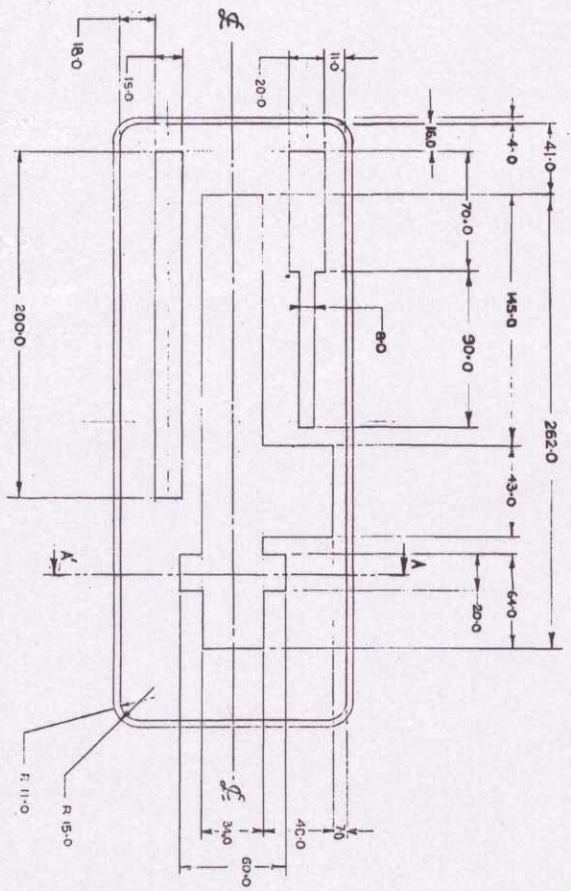
PART VIEW IN D SECTION OF AIR 21-1X1

26.06.2020
 26.06.2020
 26.06.2020

| REVISIONS | |
|-----------|-----------------------|
| NO. | DESCRIPTION |
| 1 | ISSUED FOR PRODUCTION |
| 2 | REVISION |
| 3 | REVISION |
| 4 | REVISION |
| 5 | REVISION |
| 6 | REVISION |
| 7 | REVISION |
| 8 | REVISION |
| 9 | REVISION |
| 10 | REVISION |

DRAWN BY: [Name]
 CHECKED BY: [Name]
 DATE: [Date]

140



SECTION AT A-A'

(b) **MATL. & SPECN:-**
 EXPANDED POLYMELENE FOAM
 (DENSITY 0.09+0.01g/cm³ BLACK(GREY))

FOAM, LOWER

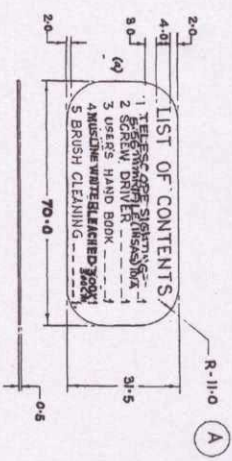
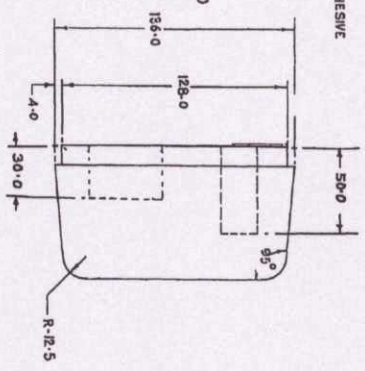
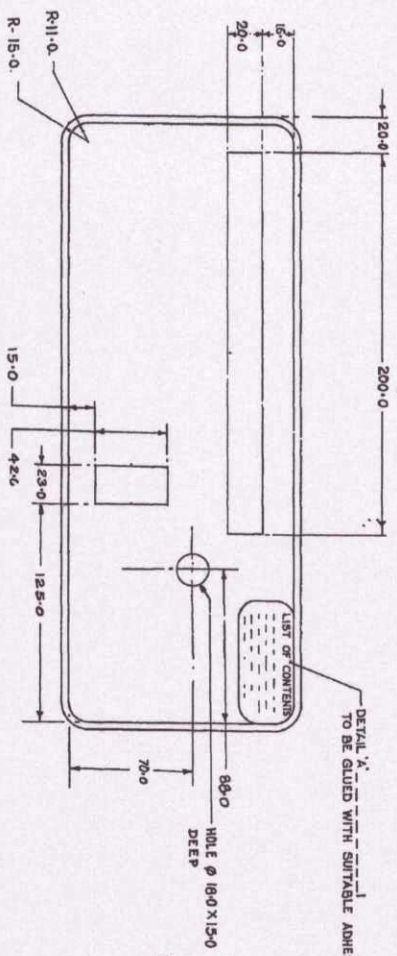
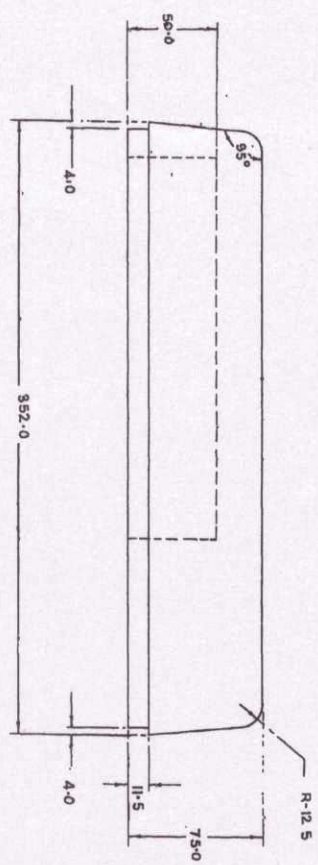
FOR TRADI ONLY
 Date of Issue: 26.08.2020

| SYN | ZONE | AMENDMENTS | CHNG | SK | DATE |
|-----|------|----------------------------------|------|----|----------|
| | | D.C. 2041-I (P) - REV. STAGED | | | 12/03/94 |
| | | D.C. 6503-I (P) | | | 10/01/94 |
| | | D.C. 6524-I (P) | | | 22/02/94 |
| | | MATL. SPECN AMENDED. | | | |
| | | (b) D.C. 6762-I (P) | | | 08/08/94 |
| | | MATL. & SPECN AMENDED. | | | |

| FOR EXPLANATION OF DIMENSIONS ETC., SEE | | DRN | APPROVED |
|--|--|--------|----------------|
| RD NOTE SHEET No. 1 | | | FOR DIRECTOR |
| THIRD ANGLE PROJECTION | | | IRDE DEHQ/DIRN |
| DIMENSIONING ARE IN MM | | | DATE: 8-4-94 |
| MATT. & SPEC:- | | USED | |
| FOAM RUBBER DENSITY 0.10 ± 0.01 gm/cm ³ | | ON | |
| | | ON | |
| | | BASED | |
| | | GAT/PT | |
| | | No. | |
| FINISH & SPEC:- | | DRG | IRDE 2610/3 |
| CLEAN | | No. | |
| | | SCALE | 1:1 SH OF |

PLING CUB

394



CONTENTS PLATE

SCALE - 1:1

MATL - AL. ALLOY SHEET 19000H1 15.737-1966
FINISH - ANODISED, AC-15 IS. 1868-1986

NOTE:-
LETTERS & FIGURES TO BE PHOTOETCHED ON ANODISED AL. SHEET.
ALL LETTER & FIG. TO BE 2.5 HIGH, GAP BETWEEN TWO LINES TO BE 2.0

FOAM, UPPER

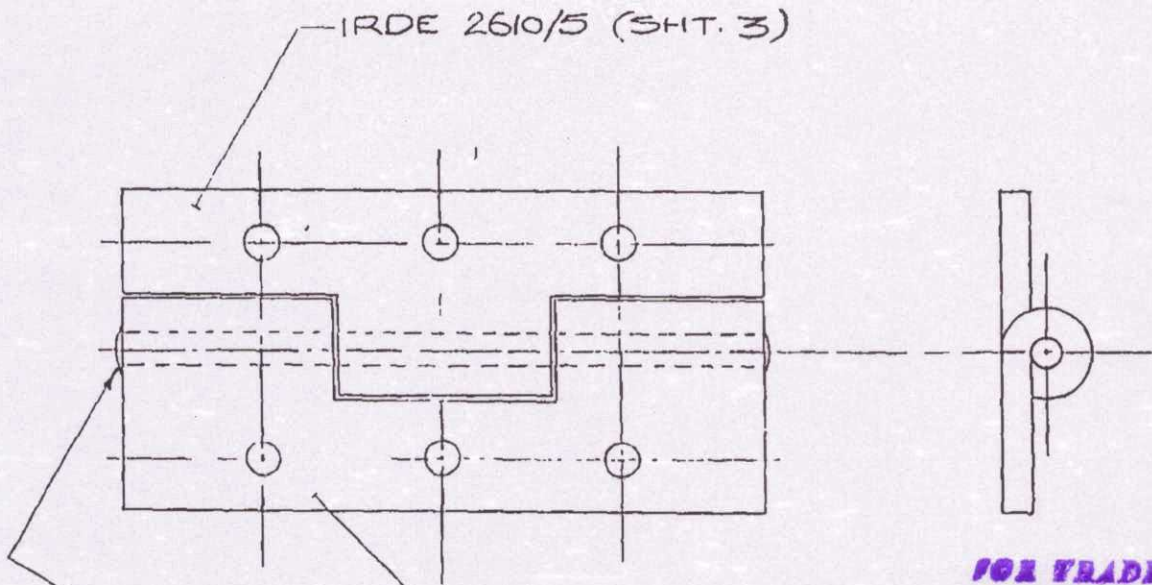
(b) MATL. & SPECN:-
EXPANDED POLYURETHANE FOAM
(DENSITY 0.09+0.01g/cm³ BLACK/GREY)

| SYN | ZONE | AMENDMENTS | CHKD | SIG | DATE |
|-----|------|-----------------------------|------|-----|-------|
| | | D.C. 2041-I(P) | | | 15/12 |
| | | D.C. 2080-1A | | | 15/12 |
| | | D.C. 6503-I | | | 10/7 |
| | | D.C. 6524-I | | | 10/7 |
| | | D.C. 6762-1 | | | 10/7 |
| | | MATL. & SPECN. AMENDED. | | | 15/12 |
| | | (b) MATL. & SPECN. AMENDED. | | | 15/12 |
| | | MATL. & SPECN. AMENDED. | | | 15/12 |

| FOR EXPLANATION OF DIMENSIONING ETC. SEE IRDE NOTE SHEET NO. 1 THIRD ANGLE PROJECTION DIMENSIONS ARE IN MILLIMETERS | DRN | CHKD | TRCD | APPROVED |
|---|-----|------|------|----------|
| MATL. & SPECN. | | | | |
| FOAM: RUBBER DENSITY 0.18 ± 0.01g/cm ³ (OR) | | | | |
| (*) DAMAGED BY CONTACT WITH OTHER PARTS | | | | |
| FINISH - CLEAN | | | | |

FOR TRADE COPY
Date of Issue: 26.06.20
R

FOR EXPLANATION OF DIMENSIONING Etc. SEE IRDE NOTE SHEET No. 1
THIRD ANGLE PROJECTION DIMENSIONS ARE IN MILLIMETRES.



FOR TRADE ONM
Date of Issue

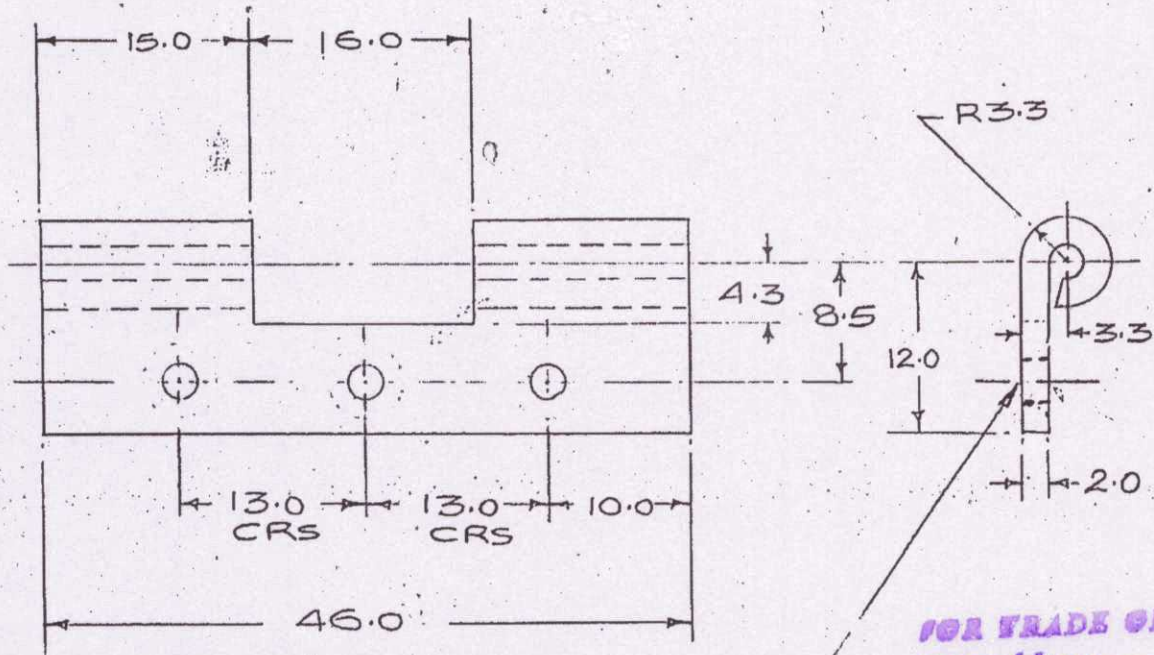
28.06.2012
2

BRASS WIRE, $\phi 2.5 \times 50$ LG, HALF HARD IS: 4413 (TO BE RIVETTED AT BOTH ENDS)

DC-2017-I(P), 6503-I, 7020-I

| | | | | | | | |
|--------------|--|--------------------|--------------------|---------|------------|--------------------|------------------------------|
| | | | | | DRN | <i>[Signature]</i> | APPROVED |
| | | | | | TRCD | 01.4.94 | <i>[Signature]</i> |
| (b) | D.C. 7020-I. N.M. AMENDED AND CAT/PT. No. ADDED. | $\phi 21$ | <i>[Signature]</i> | 15-1-10 | CHKD | <i>[Signature]</i> | for DIRECTOR IRDE, Debra Dun |
| | D.C:- 6503-I:- DRG. SEALED. | <i>[Signature]</i> | <i>[Signature]</i> | 10.7.01 | CHKD | <i>[Signature]</i> | Date 8.4.94 |
| | DC-2017-I(P):- DRG. PROJ. SEALED. | <i>[Signature]</i> | <i>[Signature]</i> | 17.6.96 | | | |
| SYM | AMENDMENTS | CHKD | SIG | DATE | | | |
| MATL & SPECN | | | | | CAT PT. No | 5340-177894 | (b) |
| FINISH | | | | | DRG. No, | IRDE 2610/5 | |
| TITLE | HINGE, BUTT | | | | SCALE | SH1 - OF 3 | |

FOR EXPLANATION OF DIMENSIONING Etc. SEE IRDE NOTE SHEET No. 1
THIRD ANGLE PROJECTION DIMENSIONS ARE IN MILLIMETRES.



FOR TRADE USE
Date of Issue

26.06.2020

3 HOLES ϕ 2.6

FLAP

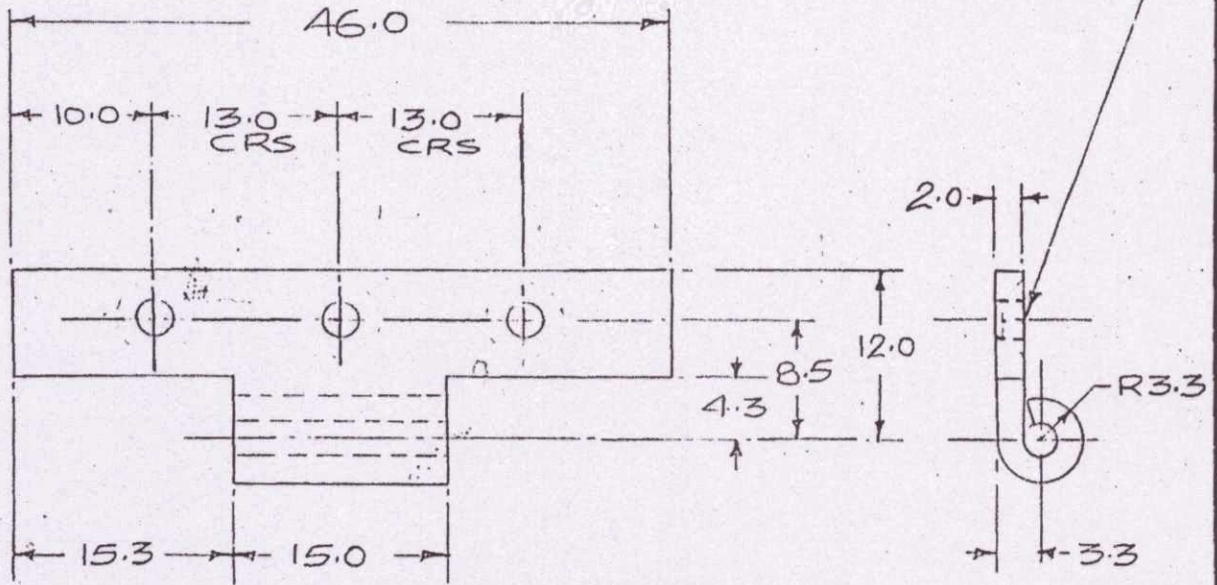
| | | | | | | | |
|--------------|---|--------------------|--------------------|---------|------------|--------------------|-----------------|
| | | | | | DRN | <i>[Signature]</i> | APPROVED |
| (c) | D.C. 7023-I. | <i>[Signature]</i> | <i>[Signature]</i> | 25.3.10 | TRCD | 01.4.94 | for DIRECTOR |
| (b) | D.C. 7020-I. NOM. AMENDED AND CAT/ PT. No. ADDED. | <i>[Signature]</i> | <i>[Signature]</i> | 15.1.10 | CHKD | <i>[Signature]</i> | IRDE, Dehra Dun |
| | D.C. 6503-I. DRG. SEALED. | <i>[Signature]</i> | <i>[Signature]</i> | 10.7.01 | CHKD | <i>[Signature]</i> | Date 8.4.94 |
| | DCI-2017-I(P). DRG. PROV. SEALED | <i>[Signature]</i> | <i>[Signature]</i> | 17.6.96 | | | |
| SYM | AMENDMENTS | CHKD | SIG | DATE | | | |
| MATL & SPECN | BRASS SHEET, IS: 410-1977 CuZn 37 HB | | | | CAT PT. No | 5340-177894 | (b) |
| FINISH | BRONZED BLACK DULL. | | | | DRG. No. | IRDE 2610/5 | |
| TITLE | HINGE BUTT | | | | SCALE | 2:1 | SH 2- OF 3 |

D.C. 1720-I(P), 6503-I, 7020-I, 7023-I

135

FOR EXPLANATION OF DIMENSIONING Etc. SEE IRDE NOTE SHEET No. 1
THIRD ANGLE PROJECTION DIMENSIONS ARE IN MILLIMETRES.

3 HOLES $\phi 2.6$ AS SHOWN



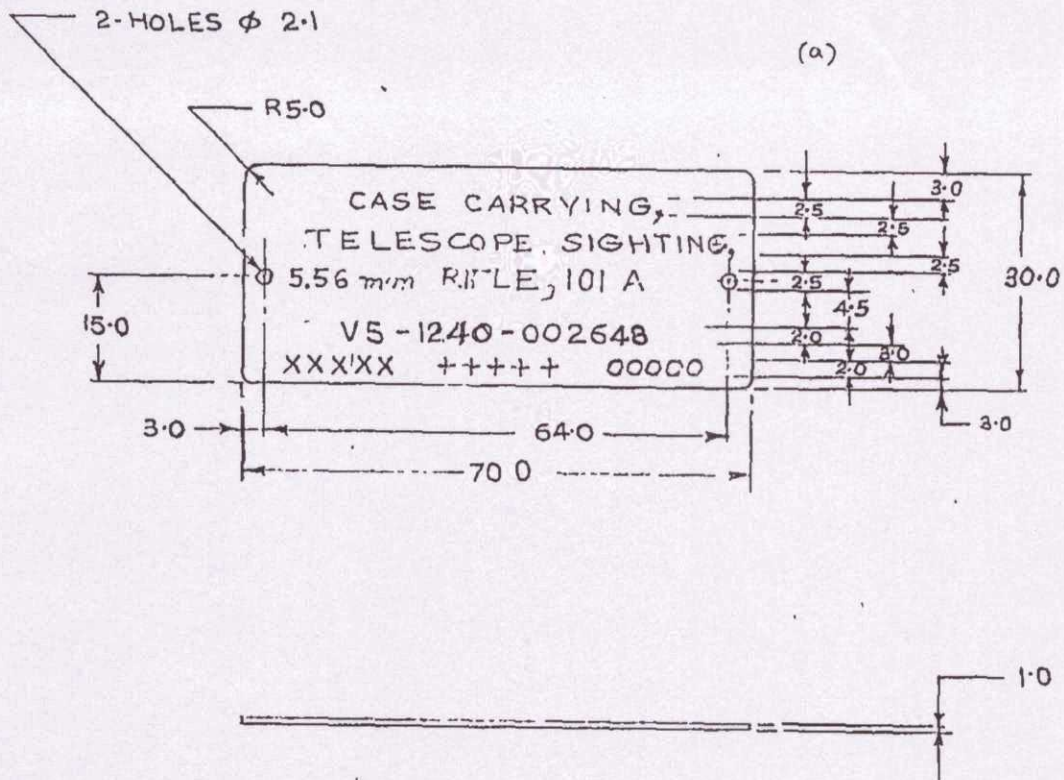
FOR TRADE GEM
Date of Issue 26.08.2020

FLAP

DC: 2017-I(P), 6503-I, 7020-I, 7023-I

| | | | | | | | |
|--------------|--|--------------------|--------------------|---------|------------|--------------------|---------------------------------|
| | | | | | DRN | <i>[Signature]</i> | APPROVED |
| (c) | D.C. 7023-I. MATL AMENDED | <i>[Signature]</i> | <i>[Signature]</i> | 25-3-10 | TRCD | 01-4-94 | <i>[Signature]</i> |
| (b) | D.C. 7020-I. NOM. AMENDED AND CATI PT. No. ADDED. | <i>[Signature]</i> | <i>[Signature]</i> | 15-1-10 | CHKD | <i>[Signature]</i> | for DIRECTOR IRDE, Dohra Dun |
| | D.C.:- 6503-I:- DRG. SEALED. | <i>[Signature]</i> | <i>[Signature]</i> | 10-7-01 | CHKD | <i>[Signature]</i> | Date 8.4.94 |
| | DC:- 2017-I(P):- DRG. PROV. SEALED. | <i>[Signature]</i> | <i>[Signature]</i> | 17-6-96 | | | |
| SYM | AMENDMENTS | CHKD | SIG | DATE | | | |
| MATL & SPECN | BRASS SHEET, IS: 410-1977. CuZn 37 HB | | | | CAT PT. No | 5340-177894 | (b) |
| FINISH | BRONZED BLACK DULL | | | | DRG. No, | IRDE 2610/5 | |
| TITLE | HINGE BUTT | | | | SCALE | 2:1 | SH 3 OF 3 |

FOR EXPLANATION OF DIMENSIONING Etc. SEE IRDE NOTE SHEET No. 1
 THIRD ANGLE PROJECTION DIMENSIONS ARE IN MILLIMETRES.



NOTE :- LETTERS & FIGURES ARE TO BE PHOTOETCHED BLACK ON ANODISED AL. PLATE.

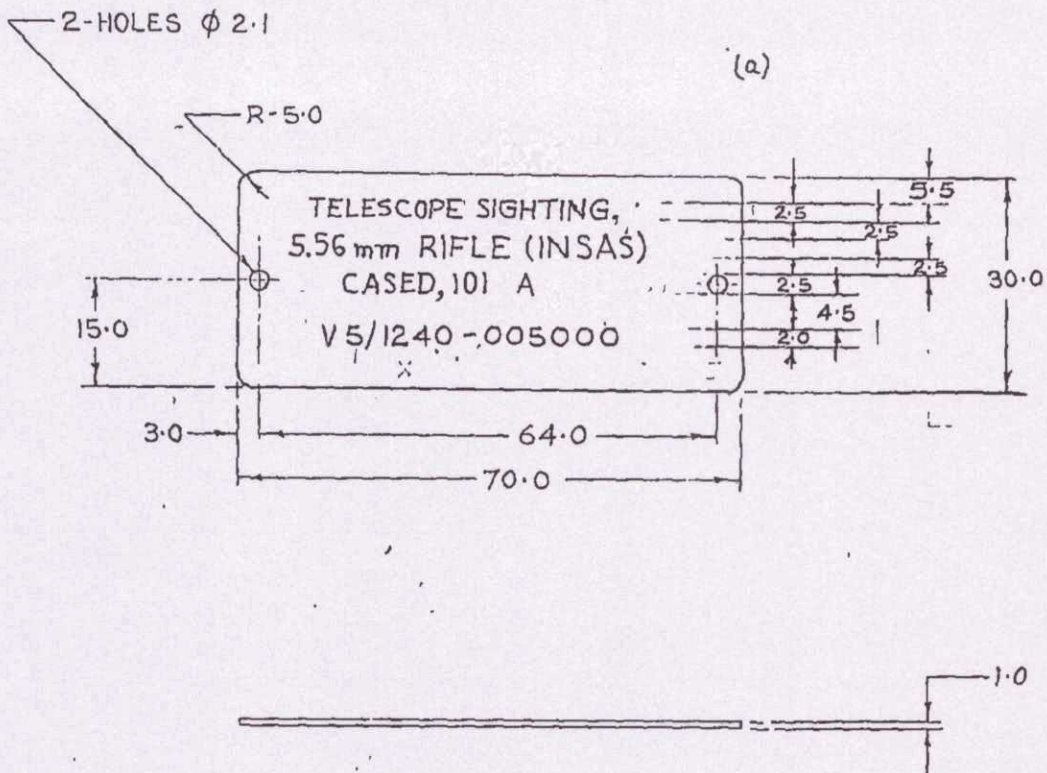
XXXX - MANUFACTURER'S INITIAL
 +++++ - REGISTERED NO. (IF REQUIRED)
 0000 - YEAR OF SUPPLY

FOR TRADE COPY
 Date of Issue 26.06.2020

D.C.-2041-I(P), 6503-I, 7020-I.

| | | | | | | | |
|--------------|--|--------------------|--------------------|---------|------------|--------------------|------------------------------|
| | | | | | DRN | <i>Bautya</i> | APPROVED |
| | | | | | TRCO | | <i>[Signature]</i> |
| (c) | D.C. 7020-I. NOM. AMENDED AND CAT/PT. No. ADDED. | <i>[Signature]</i> | <i>[Signature]</i> | 15-1-10 | CHKD | | for DIRECTOR IRDE, Dehra Dun |
| | D.C.-6503-I.- DRG. SEALED. | <i>[Signature]</i> | <i>[Signature]</i> | 10.7.01 | CHKD | <i>[Signature]</i> | Date 8.4.94 |
| (a) | D.C.-2041-I(P)- MARKING AMENDED & DRG. PROV. SEALED. | <i>[Signature]</i> | <i>[Signature]</i> | 3.12.96 | | | |
| SYM | AMENDMENTS | CHKD | SIG | DATE | | | |
| MATL & SPECN | AL. ALLOY, 19000 H1 - IS: 737 - 1986 | | | | CAT PT. No | 9905-837341 | (c) |
| FINISH | ANODISED AC-15 IS: 1868 - 1982 | | | | DRG. No. | IRDE.2610/6 | |
| TITLE | PLATE IDENTIFICATION | | | | SCALE | 1:1 | SH - OF |

FOR EXPLANATION OF DIMENSIONING Etc. SEE IRDE NOTE SHEET No. 1
THIRD ANGLE PROJECTION DIMENSIONS ARE IN MILLIMETRES.



NOTE :- LETTERS & FIGURES ARE TO BE PHOTOETCHED BLACK ON ANODISED AL. PLATE.

FOR TRADE USE

Date of Issue 26.06.2020

D.C.: 2041-I(P), 6503-I, 7020-I.

| | | | | | | | |
|-----------------|---|--------------------|--------------------|---------|---------------|--------------------|--|
| | | | | | DRN | <i>[Signature]</i> | APPROVED <i>(AB) [Signature]</i> for DIRECTOR IRDE, Dobra Dun |
| | | | | | TRCD | | |
| (c) | D.C. 7020-I. NOM. AMENDED AND CAT/PT. No. ADDED. | <i>[Signature]</i> | <i>[Signature]</i> | 15-1-10 | CHKD | <i>[Signature]</i> | Date 20.2.95 |
| | D.C.: 6503-I. DRG. SEALED. | <i>[Signature]</i> | <i>[Signature]</i> | 10.7.01 | CHKD | | |
| (a) | D.C.: 2041-I. MARKING AMENDED & DRG. PROV. SEALED. | <i>[Signature]</i> | <i>[Signature]</i> | 3.12.96 | | | |
| SYM | AMENDMENTS | CHKD | SIG | DATE | | | |
| MATL & SPECN | AL. ALLOY, 19000 H1-1S:737-1986 | | | | CAT PT. No | 9905-837340 (c) | |
| FINISH | ANODISED AC-15 IS:1868-1982 | | | | DRG. No. | IRDE 2610/7 | |
| TITLE | PLATE IDENTIFICATION (c) | | | | SCALE | 1:1 | SH - OF |

REDUCED DRG. PREPARED AT CQA (I) D. DUN
 PREPARED BY: *Dayal*
 CHECKED BY: *Dayal*

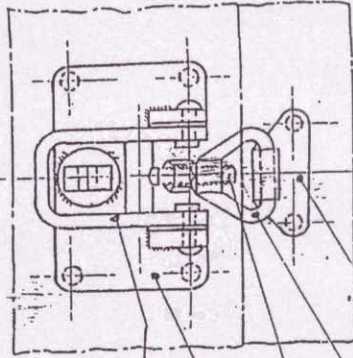
DATE: -
 23.8.96

D.C. (I) :- 0849-I(P), 0967-I(P), 1129-I(P), 2030-I(P),
 6503-I. 7026-I.

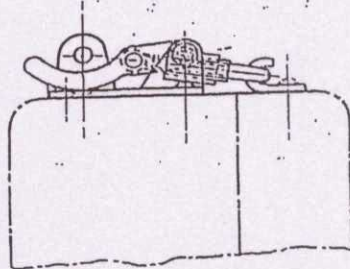
VETTED BY: *[Signature]*
 I/C QM-I: *[Signature]*

TITLE:-

FASTENER SET, TURNLOCK



- IRDE 1203/5
- IRDE 1203/4
- IRDE 1203/3
- (a) NUT, PLAIN/HEX.M4. STEEL/SS IS:2389
- IRDE 1203/1 (ASHTS)
- RIVET, FLAT. HD. 2.5X12,
- M.S. IS:2155 (5320-001114)
- IRDE1203/2



NOTE:-
 IRDE 1203/2 SHOULD WORK FREELY
 AFTER RIVETING

FOR TRADE QM
Date of Issue: 26.06.2010

| AMENDMENTS | | CHD | SIG | DATE |
|--|--|--------------------|-----|---------|
| D.C.: 2030-I(P), DRG. REDUCED & NEW COPY SEALED IN SUPERSESSION OF EXISTING ONE. | | <i>[Signature]</i> | | 22.8.96 |
| D.C.: 6503-I:- DRG. SEALED. | | <i>[Signature]</i> | | 10.7.07 |
| (a) D.C.: 7026-I. NOM AMENDED | | <i>[Signature]</i> | | 20.8.10 |

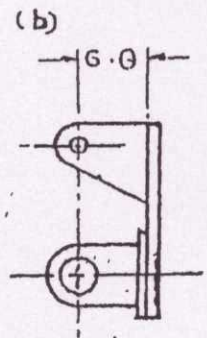
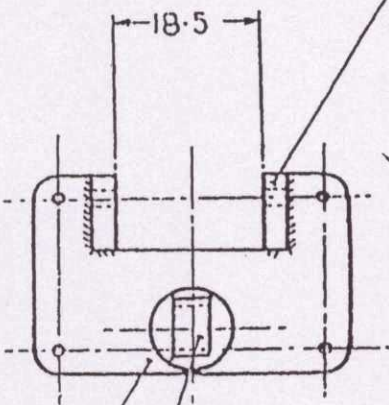
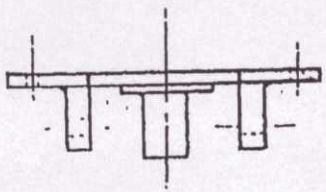
| DRN | 54- | APPROVED FOR |
|-----|-----|-------------------------------|
| DRN | 54- | FOR CONTROLLER CQA (I) D. DUN |
| TCD | 54- | |
| CHD | 54- | DATE:- |

| USED | BASED ON | CAT/PT No. | DRG No. | SCALE |
|------|----------|-------------|--------------|-------|
| USED | BASED ON | 5325-000266 | IRDE 1203/SA | SH |

| FOR EXPLANATION OF DIMENSIONING ETC. SEE CQA (I) GUIDE No. 001-1992 THIRD ANGLE PROJECTION DIMENSIONS ARE IN MM | |
|---|--|
| FINISH & SPEC:- | |

FILING CAB

FOR EXPLANATION OF DIMENSIONING Etc., SEE COA (I) GUIDE No. 001-1992
THIRD ANGLE PROJECTION
DIMENSIONS ARE IN MILLIMETERS.



IRDE 1203/1 (SHT-3) 2
[TO BE WELDED WITH IRDE 1203/1 (SHT-2)]

IRDE 1203/1 (SHT-4)
MACHINED WASHER, M5.0, 15:2016, MS
[TO BE WELDED WITH IRDE 1203/1 (SHT-2)]

IRDE 1203/1 (SHT-2)

FOR TRADE COPY
Date of Issue 26.06.2020

D.C.(I):-0849-ICP,0967-I,1129-ICP.

POLYESTER NEGATIVE PREPARED AT COA (I) D. N
PREPARED BY: -
CHECKED BY: - DATE: - 23.8.96

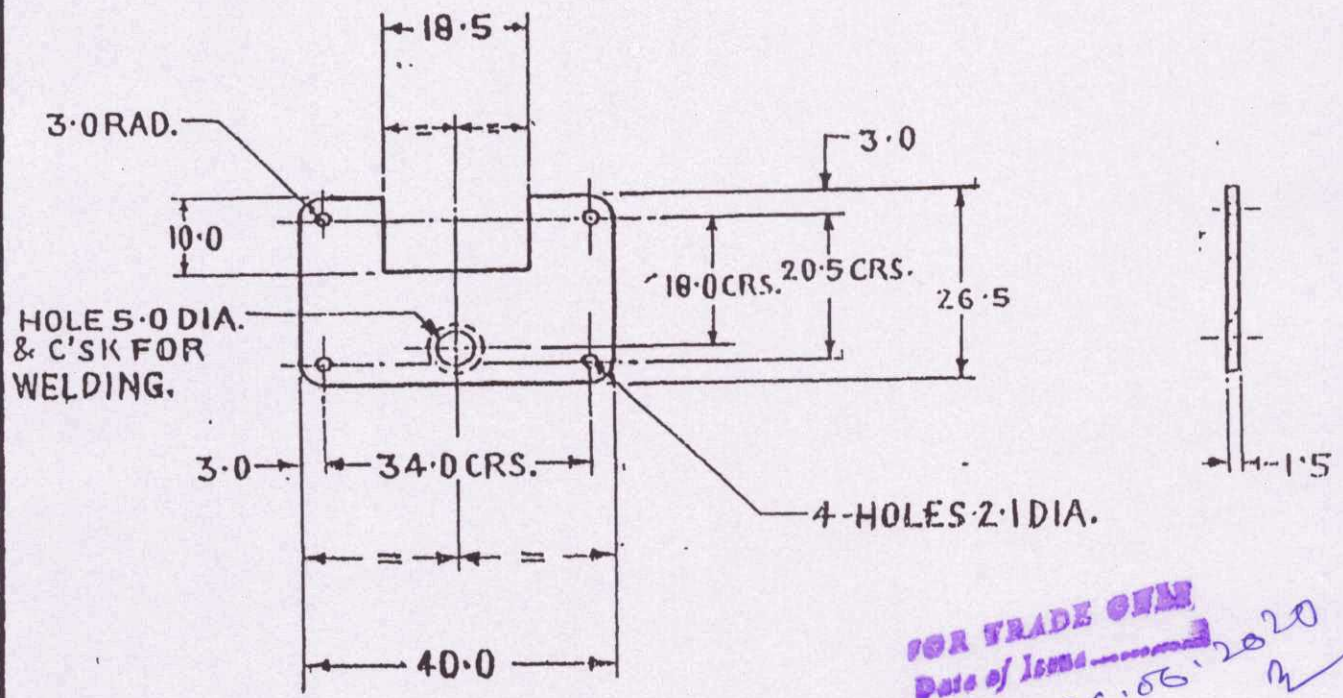
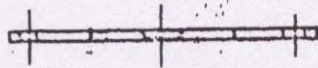
| | | | | |
|--|--|----------|----------|--------------------------|
| | | DRAWN | TRACED | APPROVED |
| | | | A.K. Roy | 11/16 |
| | | CHECKED | | for DIRECTOR |
| | | Bligh | Subli | IRDE |
| | | | | DEHRA DUN |
| (c) D.C.(I) 1129-I(P). NOM. AMENDED & CAT./PT. No. ADDED | | 1 | 1.6.84 | SCALE-1/1 DATE-18.6.73 |
| (b) D.C.(I) 0967-I(P). DIM. 6.0 WAS 8.0 | | | 15.1.78 | |
| (a) D.C.(I) 0849-ICP:- FINISH DELETED & DRG. PROV. SEALED | | | 5.12.74 | |
| AMENDMENTS | | SIG. | DATE | |
| MATERIAL M.S. 15 C4 OF IS:1570 (Part II) 1979 | | | | |
| FINISH - PHOSPHATISED, CLASS A-2 TO IS:3618-1966. | | | | |
| PLATE, BASE | | | | |
| | | 4 SHEETS | | SHEET-1 |

DRG. No.
IRDE 1203/1

CAT./PART No. (c)
5340-003260

FOR EXPLANATION OF DIMENSIONING Etc., SEE CQA(I) GUIDE No. 001-1992
THIRD ANGLE PROJECTION DIMENSIONS ARE IN MILLIMETERS.

VETTED BY: *[Signature]*
I/C QM-S



FOR TRADE CHM
Date of Issue: 26.06.2020

D.C.(I):-0849-I(P), 1129-I(CP)

POLYESTER NEGATIVE PREPARED AT CQA(I)D.DU
PREPARED BY: *[Signature]*
CHECKED BY: *[Signature]* DATE: - 23.8.96

PLATE

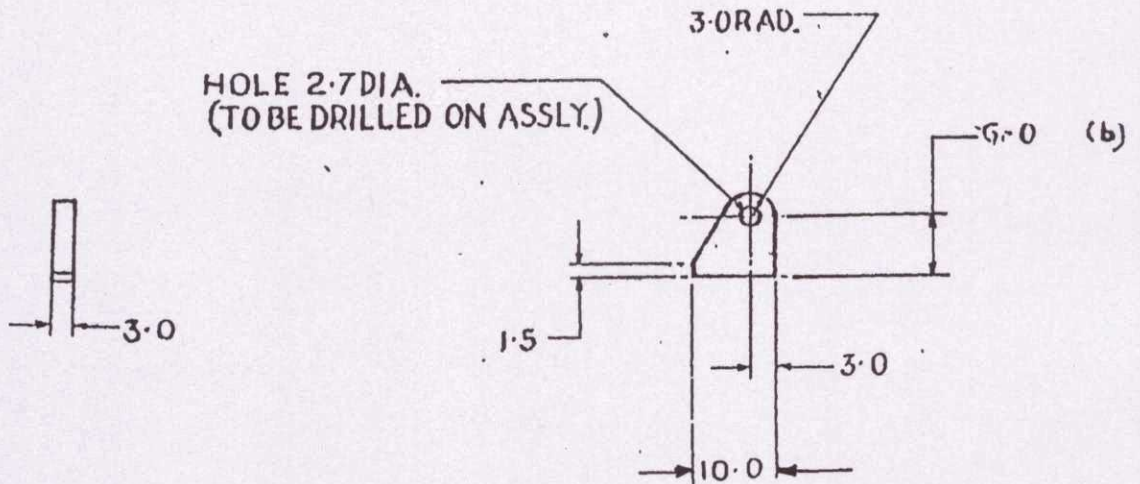
| | | | | |
|---|--|--------------------|--------------------|--------------------------|
| | | DRAWN | TRACED | APPROVED |
| | | | <i>[Signature]</i> | <i>[Signature]</i> |
| | | CHECKED | | for DIRECTOR |
| | | <i>[Signature]</i> | | IRDE |
| | | | | DEHRA DUN |
| (b) D.C.(I)-1129-I(P) NOM. AMENDED & CAT./PT. No. ADDED | | <i>[Signature]</i> | 1.6.84 | SCALE-1/1 DATE-18.6.73 |
| (a) D.C.(I)-0849-I(P) FINISH AMENDED & DRG. PROV. SEALED | | | 5.12.74 | DRG. No. |
| AMENDMENTS | | SIG. | DATE | IRDE 1203/1 |
| * MATERIAL M.S. 15 C4 OF IS:1570 (Part-II) 1979 | | CAT./PART No. | | |
| FINISH - PHOSPHATISED, CLASS A-2 TO IS:3618-1966. | | 5340-003260 | | |
| PLATE, BASE | | 4-SHEETS | | SHEET 2 |

29

FOR EXPLANATION OF DIMENSIONING Etc., SEE CQA(I) GUIDE No. 001-1992
THIRD ANGLE PROJECTION DIMENSIONS ARE IN MILLIMETERS.

VETTED BY: R
I/C QM-F: R

D.C.(I) :- 0849-I(P), 0967-I(C), 1129-I(P)



FOR TRADE USE

Date of Issue

26.06.2020

BOSS

POLYESTER NEGATIVE PREPARED AT CQA(I) D.D.U.
PREPARED BY: -
CHECKED BY: - DATE: - 23-8-96

| | | |
|--|-------------|-------------|
| (a) D.C.(I) :- 1129-I(P) NOM. AMENDED & CAT./PT. No. ADDED | | 1.6.84 |
| (b) D.C.(I) :- 0967-I(P) DIM. 6.0 WAS 8.0 | | 15.4.78 |
| (c) D.C.(I) :- 0849-I(P) FINISH AMENDED & DRG. PROV. SEALED | | 5.12.74 |
| AMENDMENTS | SIG. | DATE |

| | | |
|---------------------|-------------------|-----------------------------------|
| DRAWN | TRACED AK. Roy | APPROVED M. K. |
| CHECKED S. Singh | | for DIRECTOR IRDE DEHRA DUN |

SCALE - 1/1 | DATE - 18.6.73

DRG. No.
IRDE 1203/1

MATERIAL - M.S. 15 C4 OF IS: 1570 (Part-II) 1979

CAT./PART No. (e)
5340-003260

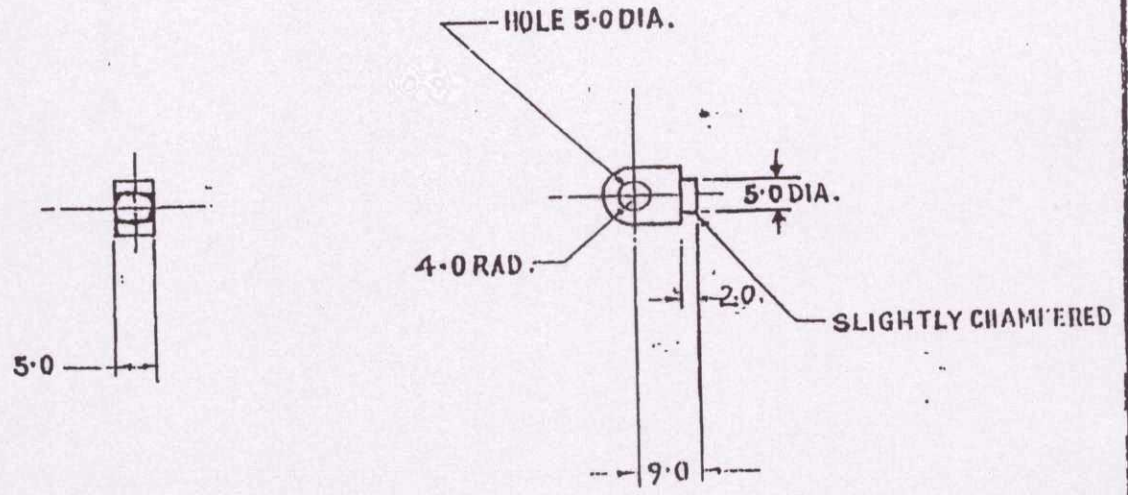
FINISH PHOSPHATISED CLASS A-2 TO IS: 3618-1966.

PLATE, BASE (c)

SHEETS SHEET-3

FOR EXPLANATION OF DIMENSIONING Etc., SEE CQA (I) GUIDE No. 001-1992
THIRD ANGLE PROJECTION
DIMENSIONS ARE IN MILLIMETERS.

VETTED BY: *[Signature]*
I/C QM: *[Signature]*



FOR TRADE COPY
Date of Issue: 26.06.2020

D.C.(I): -0849-I(P), 1129-ICP.

POLYESTER NEGATIVE PREPARED AT CQA(I) D.DUN
PREPARED BY: *[Signature]*
CHECKED BY: *[Signature]* DATE: -23.8.96.

| AMENDMENTS | SIG. | DATE |
|---|--------------------|---------|
| (b) D.C.(I) 1129-I(P), NOM. AMENDED & CAT./PT. No. ADDED | <i>[Signature]</i> | 1.6.84 |
| (a) D.C.(I) 0849-I(P), FINISH AMENDED & DRG PROV. SEALED | <i>[Signature]</i> | 5.12.74 |

MATERIAL: M.S. 15 C4 OF IS: 1570 (PART II) 1979
FINISH: IS: 3618-1966. PHOSPHATISED, CLASS: A-2 TO

PLATE, BASE

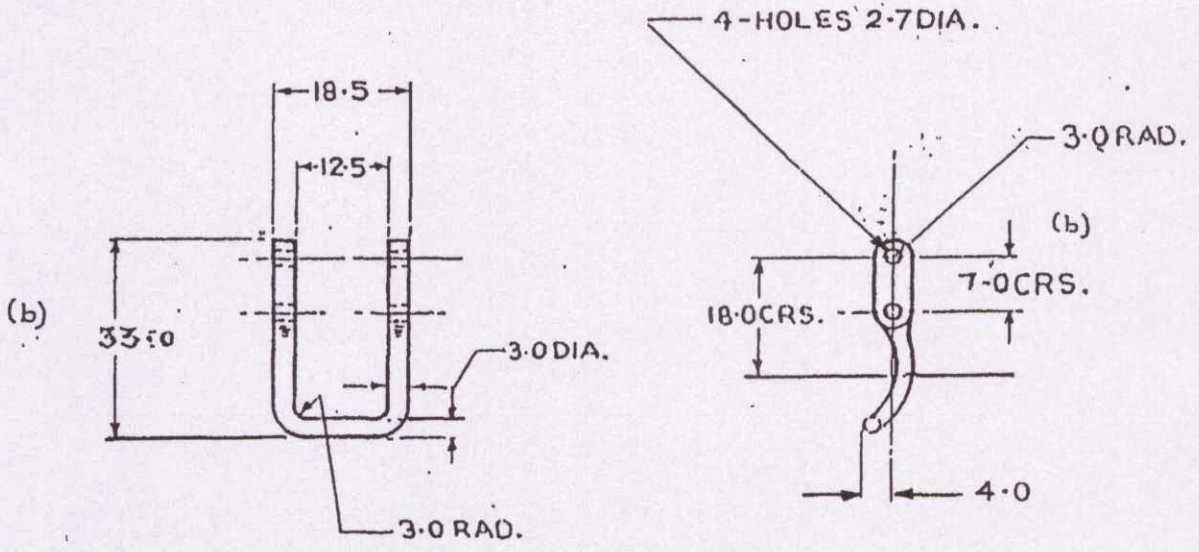
HOOK

| | | |
|--------------------|--------------------|--------------------|
| DRAWN | TRACED | APPROVED |
| | <i>[Signature]</i> | <i>[Signature]</i> |
| CHECKED | | for DIRECTOR |
| <i>[Signature]</i> | <i>[Signature]</i> | IRDE |
| | | DEHRA DUN |
| SCALE: - 1/1 | | DATE: 18.6.73 |
| DRG. No. | IRDE 1203/1 | |
| CAT./PART No. | 5340-003260 | |
| 4 SHEETS | SHEET 4 | |

FOR EXPLANATION OF DIMENSIONING Etc., SEE CQA(I)GUIDE No.001-1992.
 THIRD ANGLE PROJECTION DIMENSIONS ARE IN MILLIMETERS.

VETTED BY: [Signature]
 I/C QMS

D.C.(I) :- 0849-ICP, 0967-ICP, 1129-ICP.



FOR TRADE OFF
 Date of Issue

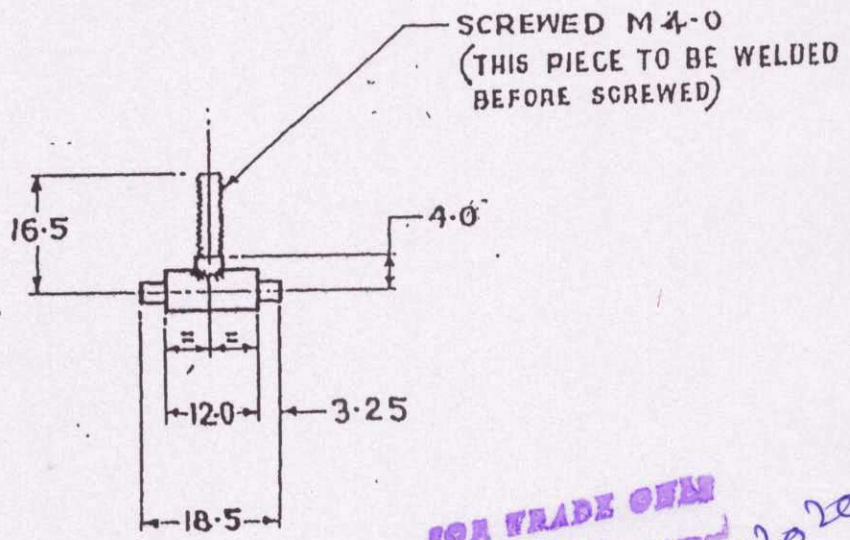
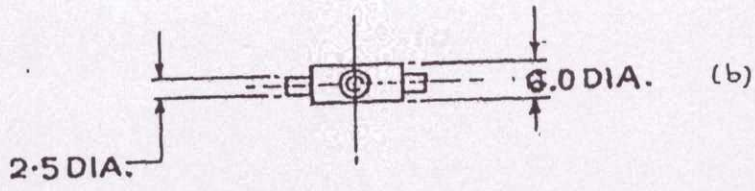
26.06.2020
 [Signature]

POLYESTER NEGATIVE PREPARED AT CQA(I)D.DUN
 PREPARED BY:- [Signature]
 CHECKED BY:- [Signature] DATE:- 23.8.96

| | | | | |
|---|--|----------------|-------------|--------------|
| | | DRAWN | TRACED | APPROVED |
| | | | [Signature] | [Signature] |
| | | CHECKED | | for DIRECTOR |
| | | [Signature] | [Signature] | IRDE |
| | | SCALE - 1/1 | | DEHRA DUM |
| | | DATE - 18.6.15 | | |
| (c) D.C.(I) :- 1129-I(P). NOM. AMENDED & CAT./PT. No. ADDED. | | [Signature] | 1.6.84 | |
| (b) D.C.(I) :- 0967-I(P) :- DIMS. 33.0 & 7.0 CRS WERE 30.5 & 9.0 CRS. | | [Signature] | 15.4.78 | |
| (a) D.C.(I) :- 0849-I(P) :- FINISH AMENDED & DRG. PROV. SEALED. | | [Signature] | 5.12.74 | |
| AMENDMENTS | | SIG. | DATE | |
| MATERIAL - M.S.Gde-I OF IS:1673-1984 | | | | |
| FINISH - PHOSPHATISED, CLASS A-2 TO IS:3618-1966 | | | | |
| HANDLE, CLIP | | | | |
| | | DRG. No. | | |
| | | IRDE 1203/2 | | |
| | | CAT/PART No. | | (c) |
| | | 5340-003261 | | |
| | | SHEETS | | SHEET |

FOR EXPLANATION OF DIMENSIONING Etc., SEE COA(I)GUIDE No.001-1992
THIRD ANGLE PROJECTION
DIMENSIONS ARE IN MILLIMETERS.

VETTED BY: *[Signature]*
I/C QM-F. *[Signature]*



FOR TRADE COPY
Date of Issue: 26.08.2020

D.C.(I):-0849-I(P), 0967-I(P), 1129-I(P).

POLYESTER NEGATIVE PREPARED AT COA(I)D.DUN
PREPARED BY: *[Signature]*
CHECKED BY: *[Signature]* DATE: 23.8.96

| | | | | |
|---|--|--------------------|--------------------|--------------------|
| | | DRAWN | TRACED | APPROVED |
| | | | <i>[Signature]</i> | <i>[Signature]</i> |
| | | CHECKED | | for DIRECTOR |
| | | <i>[Signature]</i> | <i>[Signature]</i> | IRDE |
| | | | | DEHRA DUN |
| | | SCALE-1/1 | DATE-18/6/73 | |
| | | DRG. No. | IRDE1203/3 | |
| | | CAT/PART No. | 5340-003262 | |
| | | SHEETS | SHEET | |
| <p>AMENDMENTS</p> <p>(a) D.C.(I) 1129-I(P). CAT./PT. No. ADDED. 1.6.84</p> <p>(b) D.C.(I) 0967-I(P) DIM. 6.0 DIA. WAS 5.0 DIA. & SCREWED M4.0 WAS M3.0. 15.4.78</p> <p>(c) D.C.(I) 0849-I(P). FINISH AMENDED & DRG. PROV. SEALED. 5.12.74</p> <p>MATERIAL: M.S.Gde-I OF IS:1673-1984.</p> <p>FINISH: PHOSPHATISED, CLASS A-2 TO IS:3618-1966.</p> <p>LEVER</p> | | | | |

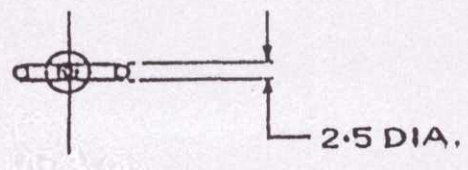
125

FOR EXPLANATION OF DIMENSIONING Etc., SEE CQA(I)GUIDE No.001-1992
THIRD ANGLE PROJECTION DIMENSIONS ARE IN MILLIMETERS.

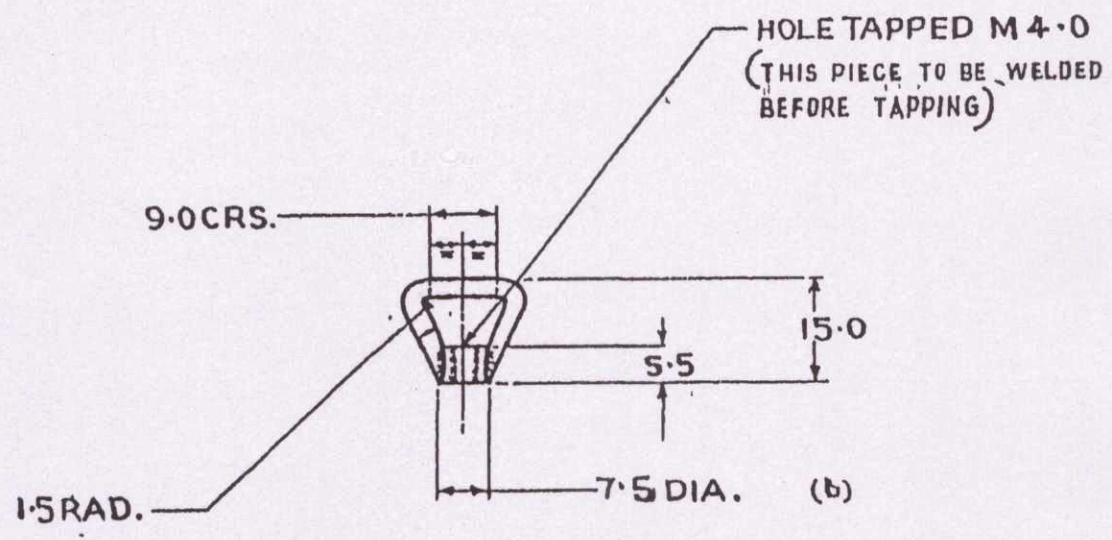
VETTED BY: *[Signature]*
I/C QM-F. *[Signature]*

D.C.(I)-0849-I (CP), 0967-I (CP), 29-I (CP).

POLYESTER NEGATIVE PREPARED AT CQA(I)D.DUN
PREPARED BY: *[Signature]*
CHECKED BY: *[Signature]* DATE: 23.8.96



(b)



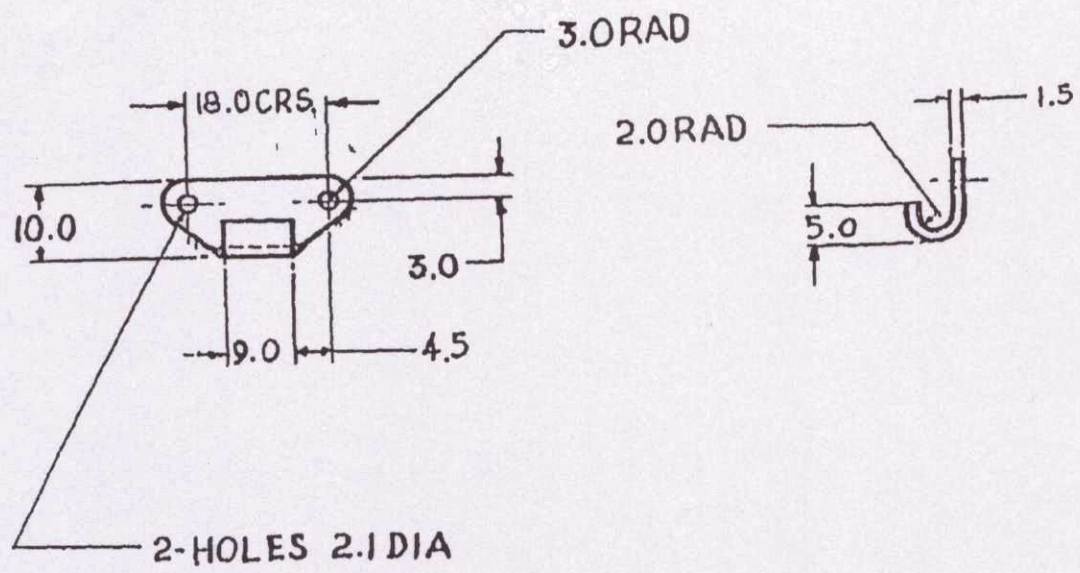
FOR TRADE CHM
Date of Issue: 26.08.2020

| | | | | |
|--|--|--------------------|--------------------|--------------------|
| | | DRAWN | TRACED | APPROVED |
| | | | <i>[Signature]</i> | <i>[Signature]</i> |
| | | CHECKED | | for DIRECTOR |
| | | <i>[Signature]</i> | <i>[Signature]</i> | IRDE |
| | | | | DEHRA DUN |
| | | SCALE-1/1 | DATE-18.6.73 | |
| | | DRG. No. | IRDE 1203/4 | |
| | | CAT/PART No. | 5340-003263 | |
| | | SHEETS | SHEET | |
| (c) LOOP, STRAP FASTENER | | | | |
| (c) D.C.(I)-1129-I (P) NOM. AMENDED & CAT./PT. No. ADDED | | <i>[Signature]</i> | 1.6.84 | |
| (b) D.C.(I)-0967-I (P)-DIM. 7.5 DIA WAS 6.0 DIA & HOLE TAPPED M4.0 WAS M3.0 | | <i>[Signature]</i> | 15.4.78 | |
| (a) D.C.(I)-0849-I (CP) FINISH AMENDED & DRG. PROV SEALED | | <i>[Signature]</i> | 5.12.74 | |
| AMENDMENTS | | SIG. DATE | | |
| MATERIAL -M.S.Gde-I OF IS:1673-1984. | | | | |
| FINISH -PHOSPHATISED, CLASS A-2 TO IS:3618-1974 | | | | |

124

FOR EXPLANATION OF DIMENSIONING Etc., SEE CO-1(I)GUIDE No.001-1992
THIRD ANGLE PROJECTION DIMENSIONS ARE IN MILLIMETERS.

VETTED BY
I/C QM-I.



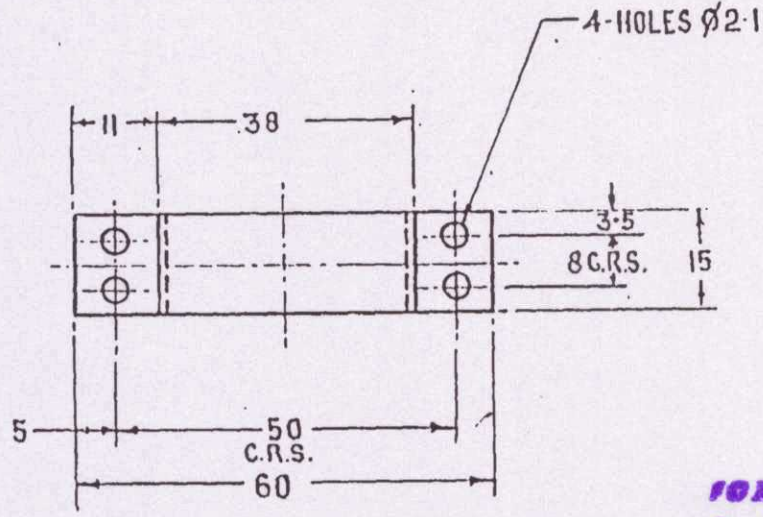
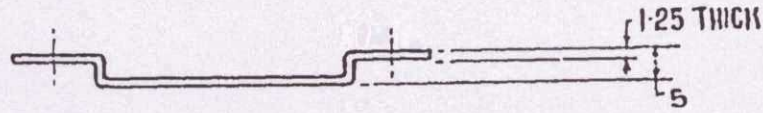
FOR TRADE USE
Date of Issue 26.06.2020

POLYESTER NEGATIVE PREPARED AT CQA(I)D.DUN (D.C.C.I) - 0849-I(P), 1129-I.C.
PREPARED BY -
CHECKED BY - DATE - 23.8.96

| | | | | |
|---|-----------|---------|-------------|----------------|
| | | DRAWN | TRACED | APPROVED |
| | | | | |
| | | CHECKED | | for DIRECTOR |
| | | | | IRDE |
| | | | | DEHRA DUN |
| (b) D C (I) - 1129-I(P) CAT/PT No. ADDED | | 1.5.84 | SCALE - 1/1 | DATE - 18.6.73 |
| (a) D C (I) - 0849-I(P) FINISH AMENDED & DRG. PROV. SEALED | | 5.12.71 | DRG No | |
| AMENDMENTS | SIG. DATE | | IRDE 1203/5 | |
| MATERIAL - M.S.15 C4 OF IS:1570(Pt-2)1979 | | | CAT/PART No | (b) |
| FINISH - PHOSPHATISED, CLASS A-2 TO TS:3618-1966. | | | 5340-00326A | |
| HOOK | | | SHEETS | SHEET |

POLYESTER NEGATIVE PREPARED AT COA(I) D DUN
 PREPARED BY: *[Signature]*
 CHECKED BY: *[Signature]* DATE: - 7 / X / 93

FOR EXPLANATION OF DIMENSIONING Etc., SEE COA(I) GUIDE No.001-1992
 THIRD-ANGLE PROJECTION DIMENSIONS ARE IN MILLIMETRES.



FOR TRADE OFF
 Date of Issue: 26.06.2020

| | | | |
|-----|---|--------------------|----------|
| (d) | D.C.: 7206-I. MATL. AMENDED | <i>[Signature]</i> | 16/8 |
| | (c) D.C.: - 5903-I. NOM. AMENDED & CAT/PT.No- ADDED. | <i>[Signature]</i> | 23/94 |
| | (b) D.C.: - 5839-I. FINISH AMENDED. | <i>[Signature]</i> | 84/94 |
| | D.C. 5774-I. POLY. NEG. PREP. & NEW COPY SEALED IN REPLACEMENT OF EXISTING ONE | <i>[Signature]</i> | 9.10.93 |
| | (a) D.C.(II): - 5584-I. MATL. SPECN. AMENDED. | <i>[Signature]</i> | 22.8.92 |
| | D.C.(I): - 4615-J. :- DRG. SEALED. | <i>[Signature]</i> | 25.8.82 |
| | D.C.(I): - 1063-J (P). DRG. PROV. SEALED. | <i>[Signature]</i> | 14.12.81 |
| SYM | AMENDMENTS | CHKD | SIG DATE |

- (a) MATL & SPEC: STEEL Gde-HR1 TO IS:1079-2017 (d)
- (b) FINISH: APPLY PRIMER TO IS: 2074-1962 AND THEN PAINTED (IS:294 TO IS: 5-1978) OF IS: 8982-1978 EXCEPT BEARING SURFACES.

TITLE (c) **CLIP RETAINING**

| | | |
|------------|--------------------|-----------------|
| DRN | <i>[Signature]</i> | APPROVED |
| TRCD | <i>[Signature]</i> | for DIRECTOR |
| CHKD | <i>[Signature]</i> | IRDE, Dehra Dun |
| CHKD | <i>[Signature]</i> | Date: 1.8.80 |
| USED OIL. | | |
| BASED OIL. | | |
| CAT PT.No | 5340-014216 | (c) |
| DRG. No. | IRDE1613/8 | |
| SCALE | 1:1 | SHT. OF |

D.C.(I): - 0665-I (P); 4615-I, 5584-I, 5774-I, 5839-I, 5903-I, 7206-I.