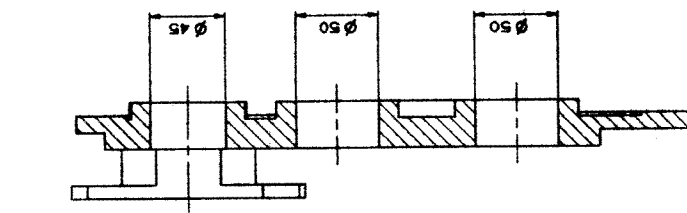
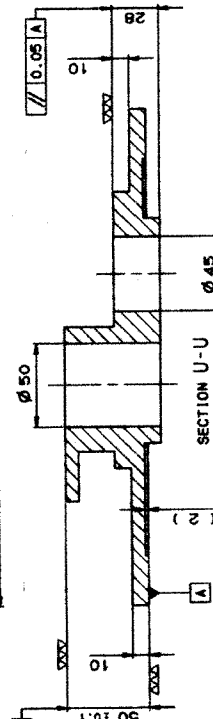
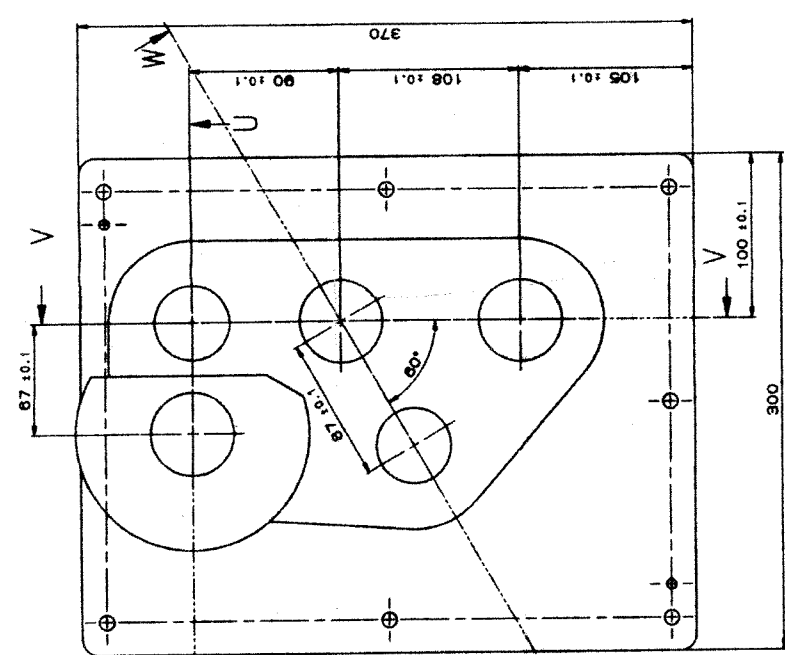


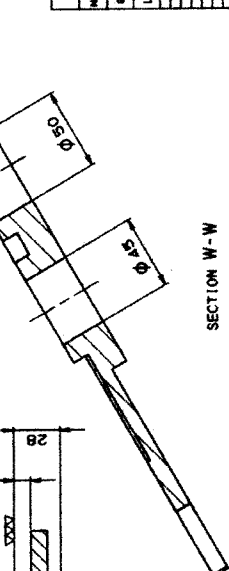
\* TO BE MANUFACTURED FROM DW-1108-5011-12-2 SECTION Z-Z



SECTION V-V



SECTION U-U



SECTION W-W

| NO. OF | COVER-V(R) | DESCRIPTION | PART NO. | MATERIAL | STANDARD | DIMENSIONS | REMARKS |
|--------|------------|-------------|----------|----------|----------|------------|---------|
| 1      | COVER-V(R) | COVER-V(R)  |          |          |          |            |         |

| NO. OF | COVER-V(LB) | DESCRIPTION          | PART NO. | MATERIAL | STANDARD | DIMENSIONS | REMARKS |
|--------|-------------|----------------------|----------|----------|----------|------------|---------|
| 1      | COVER-V(LB) | TRAINING DRIVE ASSY. |          |          |          |            |         |
| 1      | COVER-V(LB) | LRME LAUNCHER        |          |          |          |            |         |
| 1      | COVER-V(LB) | KAVACH MOD-11        |          |          |          |            |         |

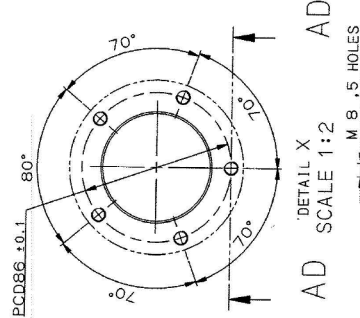
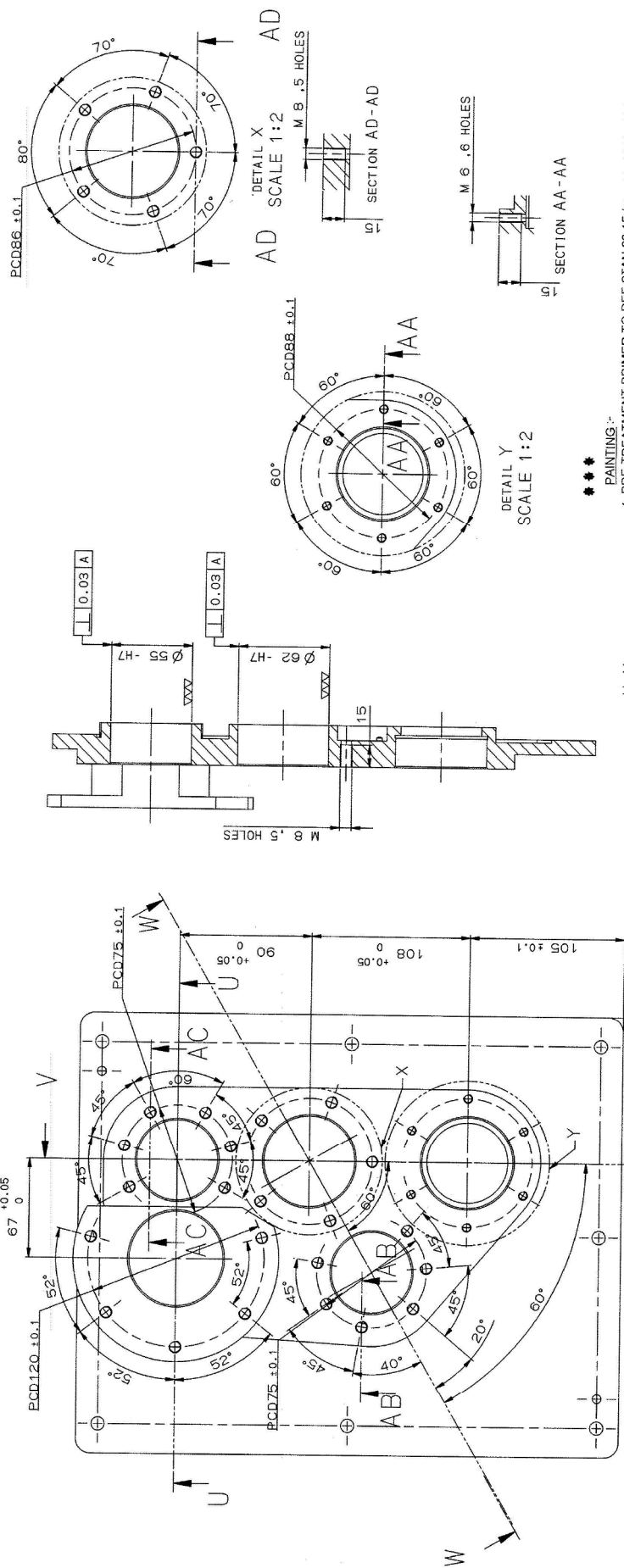
| NO. OF | COVER-V(LB) | DESCRIPTION                    | PART NO. | MATERIAL | STANDARD | DIMENSIONS | REMARKS |
|--------|-------------|--------------------------------|----------|----------|----------|------------|---------|
| 1      | COVER-V(LB) | MACHINE TOOL PROTOTYPE FACTORY |          |          |          |            |         |

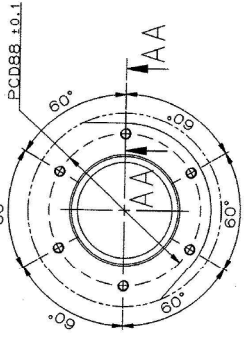
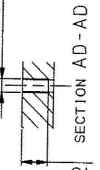
| SCALE | DRAWN | CHECKED | DATE |
|-------|-------|---------|------|
| 1:1   |       |         |      |

THE COPY/PRINT OF THESE DRAWINGS AND ATTACHMENTS TO THE INDIAN STANDARD SPECIFICATION SHOULD NOT BE USED FOR THE MANUFACTURE OF THE PARTS WITHOUT THE WRITTEN PERMISSION OF THE INDIAN BUREAU OF STANDARDS.

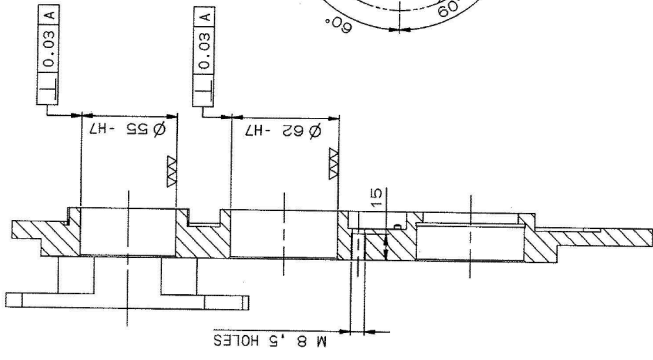
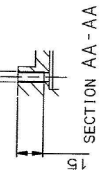
APPROVED  
DW-1108-5011-12-2 (R)



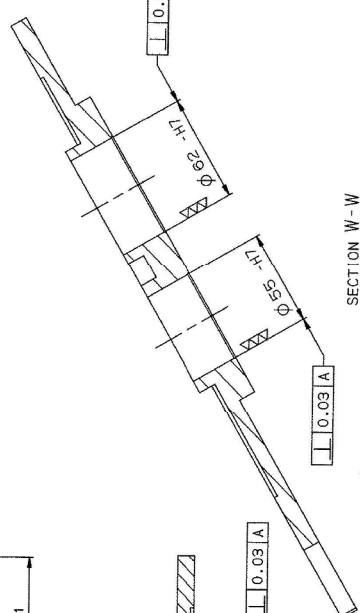
DETAIL X  
SCALE 1:2  
AD  
M 8 .5 HOLES



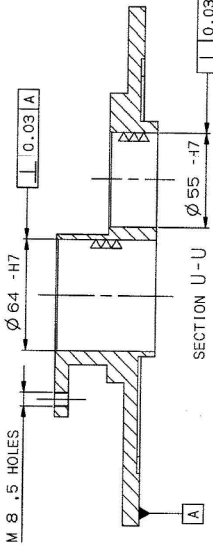
DETAIL Y  
SCALE 1:2  
AA-AA



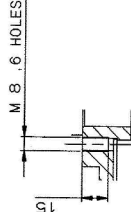
SECTION V-V



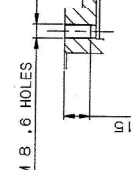
SECTION W-W



SECTION U-U



SECTION AB-AB



SECTION AC-AC

\*\*\*  
PAINTING:-  
1. PRE-TREATMENT PRIMER TO DEF STAN 80-15 (Pat.No.8010 - 000116 & 8010 - 000117) AND PRIMER YELLOW ZINC CHROMATE TO IS-1874 (Pat.No.8010-000113) TO BE APPLIED BY FIRM WHO IS SUPPLYING STORE TO MPF AS PER DW-1134  
2. PAINTING TO BE DONE AT MPF IN OR DURING ASSEMBLY AS PER DW-1134  
3. DO NOT APPLY PRIMER AND PAINT ON THREAD, AND CYLINDRICAL BORE FACE  
DIA 55- H7/DIA 62- H7/DIA 64- H7

TO BE MANUFACTURED FROM DW-1108-5011-12(B) AFTER MACHINING IN ASSY. TO DRG.NO. DW-1108-5700-12 (R) (VV(VVV))

| NO. OF PT | DESCRIPTION | PART NO. | MATERIAL | STANDARD | DIMENSIONS | REMARKS |
|-----------|-------------|----------|----------|----------|------------|---------|
| 1         | COVER-V     |          |          |          |            |         |

| GENERAL TOLERANCES | LINEAR DIMENSIONS | ANGULAR DIMENSIONS | FINISH | NO. OF ASSOCIATED PART | INDEX | ALTERNATION |
|--------------------|-------------------|--------------------|--------|------------------------|-------|-------------|
| F                  | M                 | M                  |        |                        |       |             |

| SCALE | DRAWN | CHECKED | APPROVED | DATE | TIME |
|-------|-------|---------|----------|------|------|
| 1:1   |       |         |          |      |      |

| Ø 55 -H7 | Ø 62 -H7 | Ø 64 -H7 | DEVIATION |
|----------|----------|----------|-----------|
| +0.030   | +0.030   | +0.030   |           |

COVER-V  
TRAINING DRIVE ASSY.  
PRIME LAUNCHER  
KAVACH MOD-1.1  
MACHINE TOOL PROTOTYPE FACTORY  
AMBERNATH

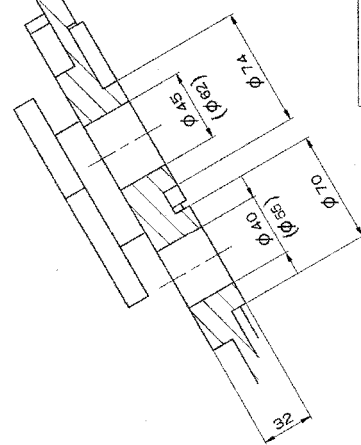
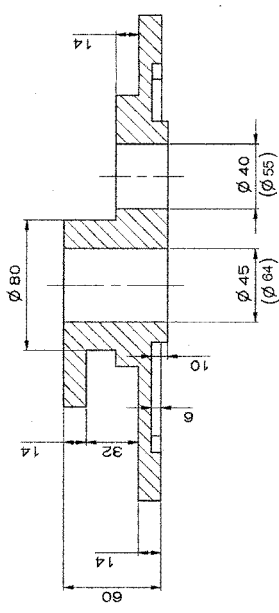
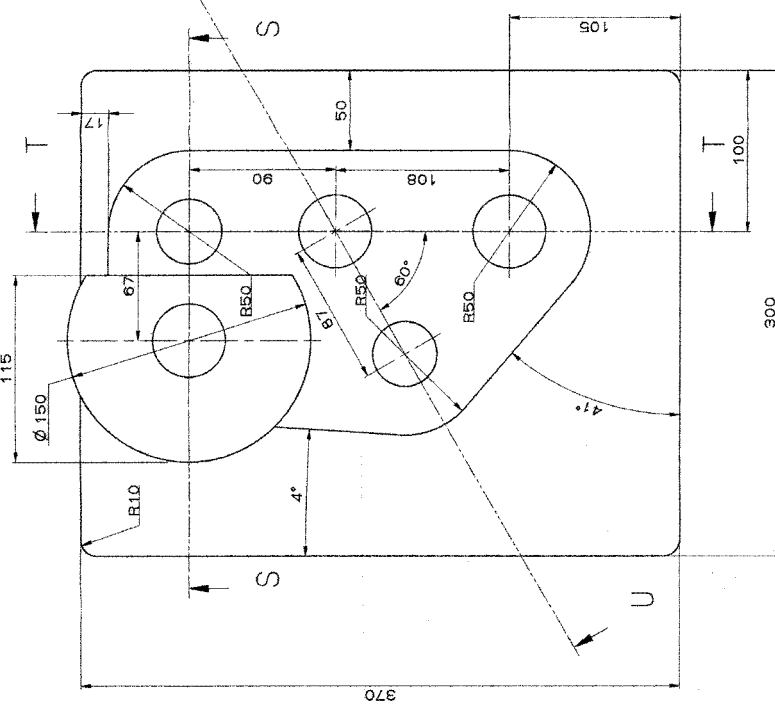
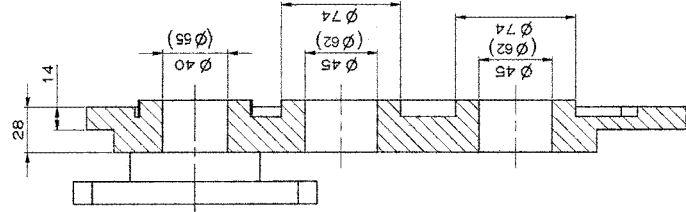
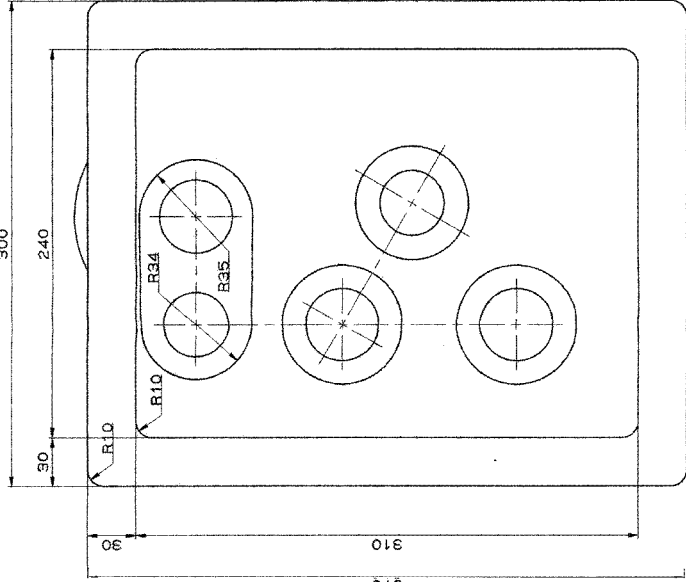
THE CONTRACTOR USES THESE DIMENSIONS AND TOLERANCES TO THE MAXIMUM EXTENT POSSIBLE. DIMENSIONS SHOULD NOT BE PRODUCED IN ANY WAY ON THE INFORMATION CONTAINED HEREIN WITHOUT THE WRITTEN PERMISSION OF THE DIRECTOR OF ORDNANCE FACTORIES.

MINIMAL SIZE & FIT

APPROVED  
DW-1108-5011-12

| CHEMICAL COMPOSITION         |            |
|------------------------------|------------|
| IS 617-94, 5500 CONDITION T4 |            |
| Mg %                         | 9.5 - 11.0 |
| Zr %                         | ---        |
| Be %                         | ---        |
| Ti %                         | 0.2 Max.   |
| Al %                         | Remainder  |
| Fe %                         | 0.4 Max.   |
| Mn %                         | 0.10 Max.  |
| Cu %                         | 0.1 Max.   |
| Zn %                         | 0.25 Max.  |
| Pb %                         | 0.05 Max.  |
| Sn %                         | 0.05 Max.  |
| Ni %                         | 0.1 Max.   |
| Sum of impurities            | ---        |

| MECHANICAL PROPERTIES        |              |
|------------------------------|--------------|
| IS 617-94, 5500 CONDITION T4 |              |
| TENSILE STRENGTH             | 275 MPa Min. |
| % ELONGATION ON 50 mm GAUGE  | 8 Min.       |



- NOTE:
1. CASTING TO BE DULY CLEANED & FREE FROM FINIS, RUNNERS, RISERS, ETC.
  2. CASTING TO BE FREE FROM CRACKS, BLOW HOLES & OTHER CASTING DEFECTS.
  3. CASTING TO BE SUPPLIED IN HEAT TREATED CONDITION TO ACHIEVE MECHANICAL PROPERTIES AS SPECIFIED.
  4. ALL UNSPECIFIED RADII ARE 3mm.
  5. CASTING AND TEST BAR SHOULD BE SUPPLIED AT SAME HEAT TREATED CONDITION.
  6. CASTING SHOULD BE TESTED FOR RADIOGRAPHIC TEST AS PER ASTM E-155-2000, LEVEL-II
  7. MACHINING SIZE SHOWN IN BRACKET

\* MTL TO IS:617-94, 5500  
\* MTL TO IS:617-94, 5500

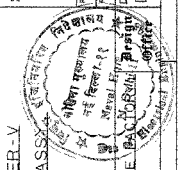
| NO. OFF | DESCRIPTION         | PART NO. | MATERIAL | STANDARD | DIMENSIONS | WEIGHT       |
|---------|---------------------|----------|----------|----------|------------|--------------|
| 1       | CASTING FOR COVER-V | *        |          |          |            | Wt. - 5.43Kg |

| GENERAL TOLERANCE | LINEAR DIMENSIONS | ANGULAR DIMENSION | NO. OFF | ISS. NO. OF ASSOCIATED PART | INDEX | ALTERNATION |
|-------------------|-------------------|-------------------|---------|-----------------------------|-------|-------------|
| F                 | 0-6               | 1:10              | 1       |                             |       |             |
| G                 | 6-30              | 1:20              |         |                             |       |             |
| H                 | 30-100            | 1:30              |         |                             |       |             |
| K                 | 100-300           | 1:40              |         |                             |       |             |
| M                 | 300-500           | 1:50              |         |                             |       |             |
| N                 | 500-1000          | 1:60              |         |                             |       |             |
| P                 | 1000-2000         | 1:70              |         |                             |       |             |
| Q                 | 2000-5000         | 1:80              |         |                             |       |             |
| R                 | 5000-10000        | 1:90              |         |                             |       |             |
| S                 | 10000-20000       | 1:100             |         |                             |       |             |
| T                 | 20000-50000       | 1:120             |         |                             |       |             |
| U                 | 50000-100000      | 1:150             |         |                             |       |             |
| V                 | 100000-200000     | 1:200             |         |                             |       |             |
| W                 | 200000-500000     | 1:250             |         |                             |       |             |
| X                 | 500000-1000000    | 1:300             |         |                             |       |             |
| Y                 | 1000000-2000000   | 1:400             |         |                             |       |             |
| Z                 | 2000000-5000000   | 1:500             |         |                             |       |             |

| SCALE | DRAWN | CHECKED | APPROVED | DATE | NAME |
|-------|-------|---------|----------|------|------|
| 1:1   |       |         |          |      |      |



THE COPYRIGHT OF THESE DRAWINGS AND ATTACHMENTS TO THE INDIAN DRAWING STANDARDS IS RESERVED BY THE INDIAN BUREAU OF STANDARDS. NO PART OF THESE DRAWINGS MAY BE REPRODUCED OR TRANSMITTED IN ANY FORM OR BY ANY MEANS, ELECTRONIC OR MECHANICAL, INCLUDING PHOTOCOPYING, RECORDING, OR BY ANY INFORMATION STORAGE AND RETRIEVAL SYSTEM, WITHOUT THE WRITTEN PERMISSION OF THE DIRECTOR OF ORDNANCE FACTORIES.

DRW-1108-5011-1-2  
DW-1108-5011-1-2