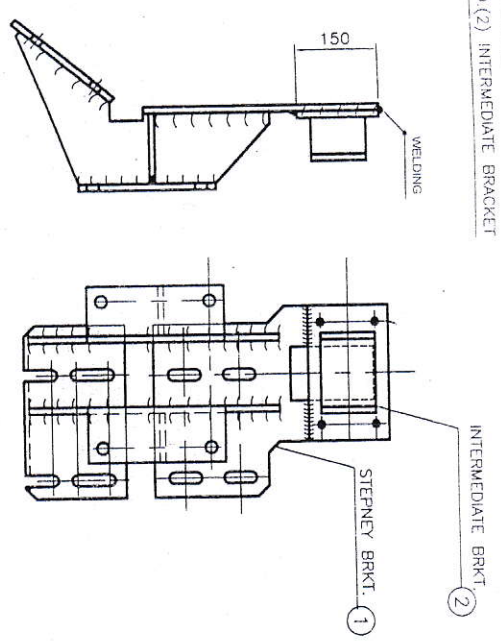
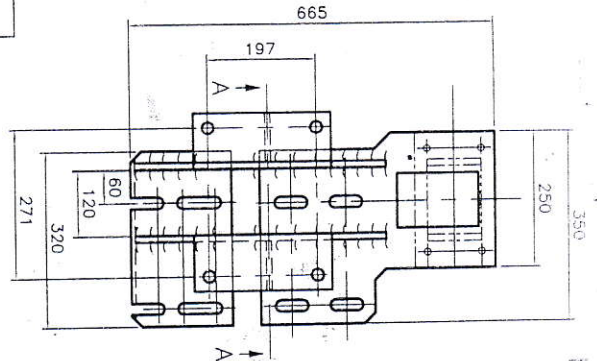
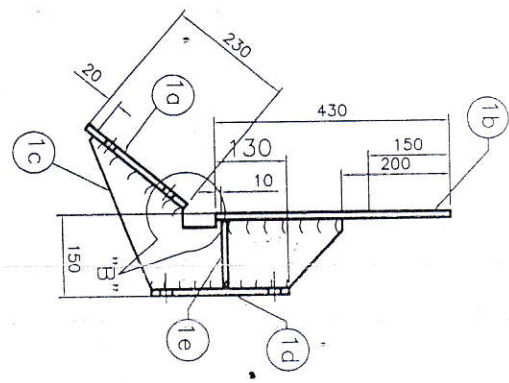


ASSY. OF ITEM NO. (1) STEPNEY BRACKET &
ITEM NO. (2) INTERMEDIATE BRACKET

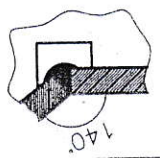


(1) STEPNEY BRACKET

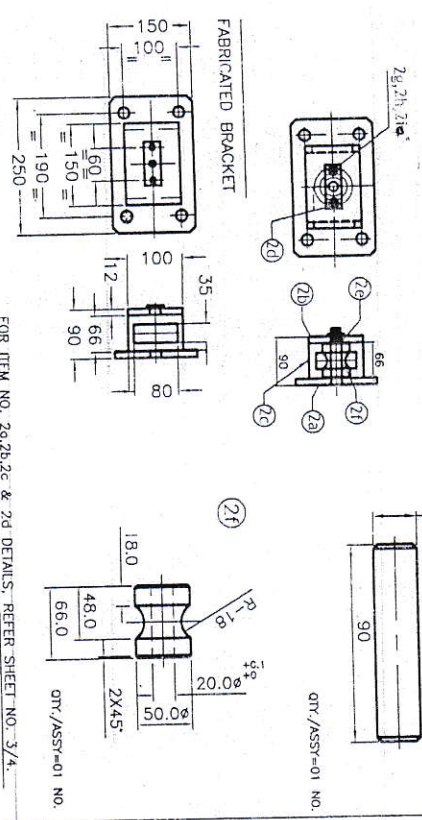


VIEW: A-A

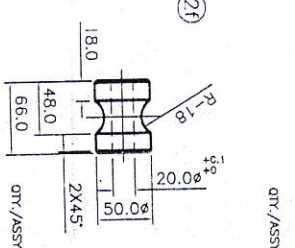
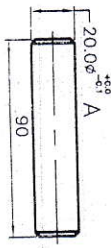
ENLARGE VIEW 'B'



(2) INTERMEDIATE BRACKET
(ASSEMBLED BRACKET)

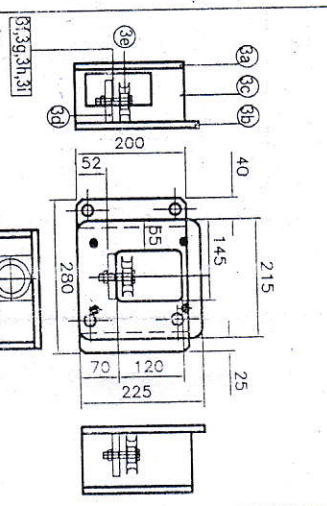


(2e)



FOR ITEM NO. 2a, 2b, 2c & 2d DETAILS, REFER SHEET NO. 3/4.

(3) LIFTING BRACKET



FOR ITEM NO. 3a, 3b, 3c & 3d DETAILS, REFER SHEET NO. 4/4.

SL NO	DESCRIPTION	QTY/ ASSY	MATERIAL
21	SPRING WASHER BB	02	IS: 6735
22	HEX. NUT M8	02	IS: 1363
23	HEX. BOLT M8X15	02	IS: 1363
24	PULLY	01	GR-4,40C8 IS3550
25	PLATE	01	GR-4,40C8 IS3550
26	PLATE	01	SI34-IS:1079
27	PLATE	02	SI34-IS:1079
28	PLATE	01	SI34-IS:1079
29	PLATE	01	SI34-IS:1079

SL NO	DESCRIPTION	QTY/ ASSY	MATERIAL
31	SPRINT PIR 4X25	01	IS: 549
32	SPRING WASHER B12	01	IS: 6735
33	HEX. NUT M12	01	IS: 1363
34	HEX. BOLT M12X60	01	IS: 1363
35	PULLY	01	GR-4,40C8 IS3550
36	PLATE	01	GR-4,40C8 IS3550
37	PLATE	02	SI34-IS:1079
38	PLATE	01	SI34-IS:1079
39	PLATE	01	SI34-IS:1079

ITEM	DESCRIPTION	NO. OF	MATL	TREAT/SIZE	REMARKS
1	LIFTING BRACKET	1	SI-34	230x200x12 THK.	
2	INTERMEDIATE BRACKET	1	SI-34	103x250x12 THK.	
3	STEPNEY BRACKET	1	SI-34	250x465x12 THK.	

NOTE:
1. ALL DIMENSIONS ARE IN MM.
2. UNSPECIFIED LIMIT DEVIATIONS ARE ±1mm.
3. RED-OXIDE TO BE COATED AFTER WELDING.
4. FOR DETAILS (LASER CUT) REFER SHEET NO. 2/4, 3/4 & 4/4
5. PILOT SAMPLE TO BE APPROVED BEFORE BULK SUPPLY.

QTY./VEH-01 NO.

VEHICLE FACTORY JABALPUR

DRG. NO. 2700-S7-32

