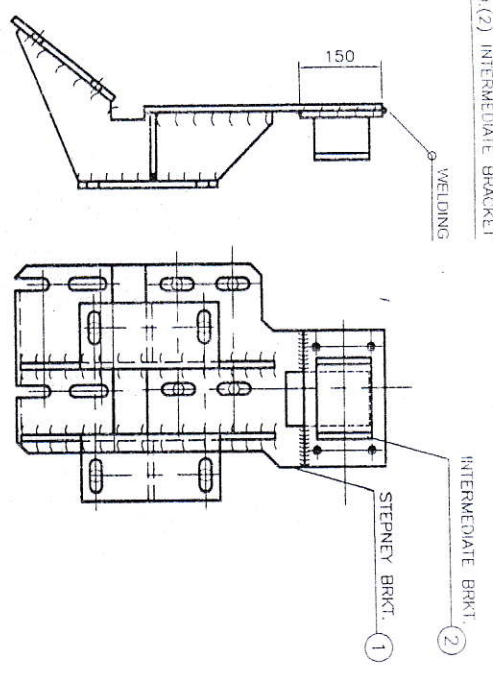
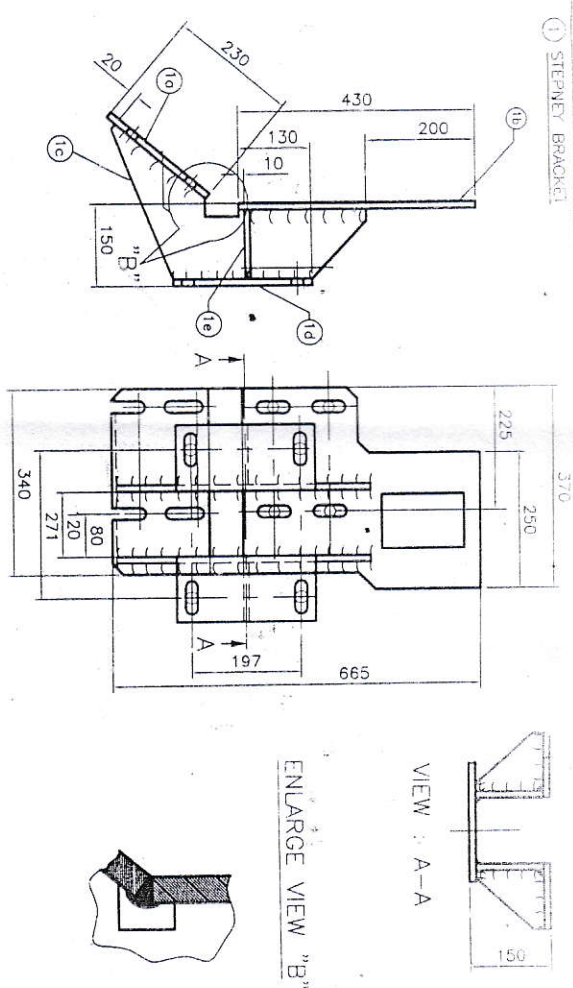


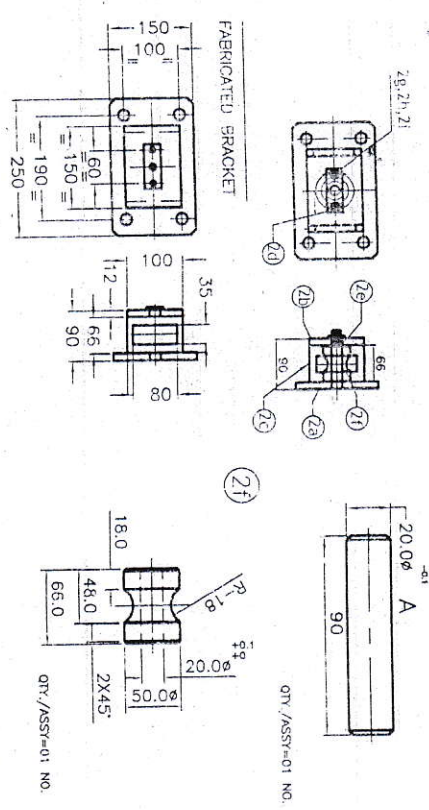
ASST. OF ITEM NO. (1) STEPNEY BRACKET &
ITEM NO. (2) INTERMEDIATE BRACKET



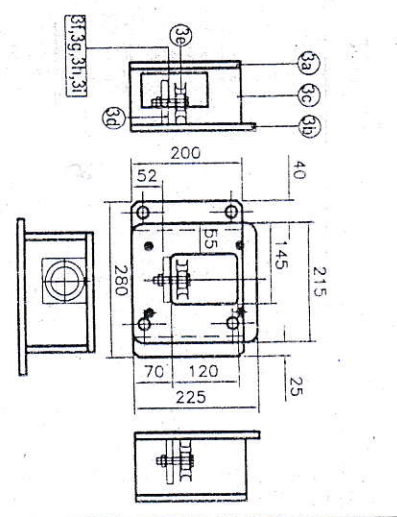
(1) STEPNEY BRACKET



(2) INTERMEDIATE BRACKET
(ASSEMBLED BRACKET)



(3) LIFTING BRACKET



SL NO	DESCRIPTION	QTY/ ASSY	MATERIAL
2	SPRING WASHER B8	02	IS: 6735
2	HEX. NUT M8	02	IS: 1363
2	HEX.BOLT M8X15	02	IS: 1363
2	PULLEY	01	GR-4,40C8 IS:9550
2	SHAFT	01	GR-4,40C8 IS:9550
2	PLATE	01	ST34-IS:1079
2	PLATE	02	ST34-IS:1079
2	PLATE	01	ST34-IS:1079
2	PLATE	01	ST34-IS:1079

FOR ITEM NO. 2a,2b,2c & 2d DETAILS, REFER SHEET NO. 3/4.

SL NO	DESCRIPTION	QTY/ ASSY	MATERIAL
3	SPLIT PIN 4X25	01	IS: 549
3	SPRING WASHER B12	01	IS: 6735
3	HEX. NUT M12	01	IS: 1363
3	HEX. BOLT M12X60	01	IS: 1363
3a	B0993604 S/A PULLEY ASSY. (X1501515)	01	A/L ITEM
3d	PLATE	01	ST34-IS:1079
3c	PLATE	02	ST34-IS:1079
3b	PLATE	01	ST34-IS:1079
3a	PLATE	01	ST34-IS:1079

FOR ITEM NO. 3a,3b,3c & 3d DETAILS, REFER SHEET NO. 4/4.

ITEM	DESCRIPTION	QTY/ASSY	MATL	TREAT/SIZE	REMARKS
1a	STIFFENER	1	SI-34	100X125X12 THK.	
1d	FRONT PLATE	2	SI-34	120X250X12 THK.	
1c	RIB	2	SI-34	48X645X12 THK.	
1b	VERTICAL PLATE	1	SI-34	310X730X12 THK.	
1a	INCLINED PLATE	1	SI-34	250X140X12 THK.	

NOTE:
1. ALL DIMENSIONS ARE IN MM.
2. UNSPECIFIED LIMIT DEVIATIONS ARE ±1mm.
3. RED-OXIDE TO BE COATED AFTER WELDING.
4. FOR DETAILS (LASER CUT) REFER SHEET NO. 2/4,3/4 & 4/4
5. PLOT SAMPLE TO BE APPROVED BEFORE BULK SUPPLY.

ITEM	DESCRIPTION	QTY/ASSY	MATERIAL	TREAT/SIZE	REMARKS
3	LIFTING BRACKET	1			
2	INTERMEDIATE BRACKET	1			
1	STEPNEY BRACKET	1			

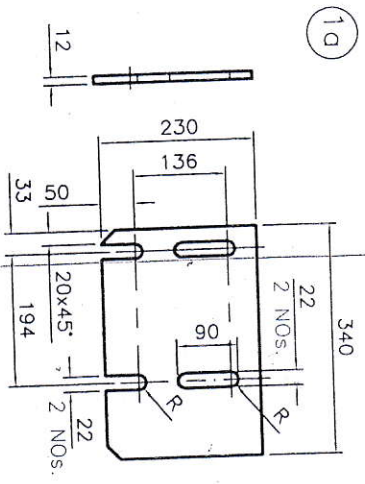
QTY./VEH=01 NO.

FOR ITEM NO. 1a,1b,1c,1d&1e DETAILS, REFER SHEET NO. 2/4.

VEHICLE FACTORY JABALPUR

DRG NO. 2699-57-31

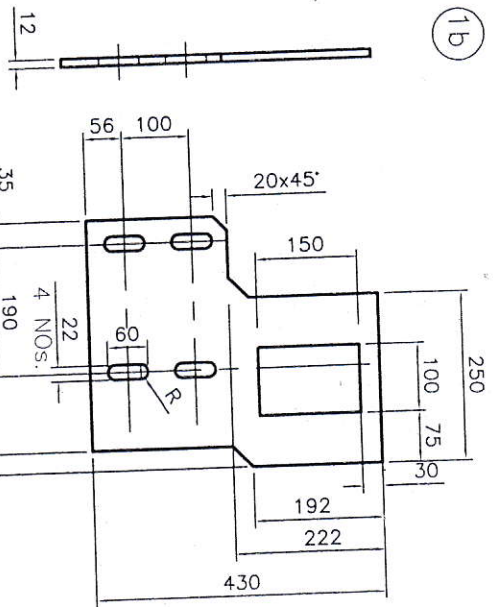
1/4 SHEET



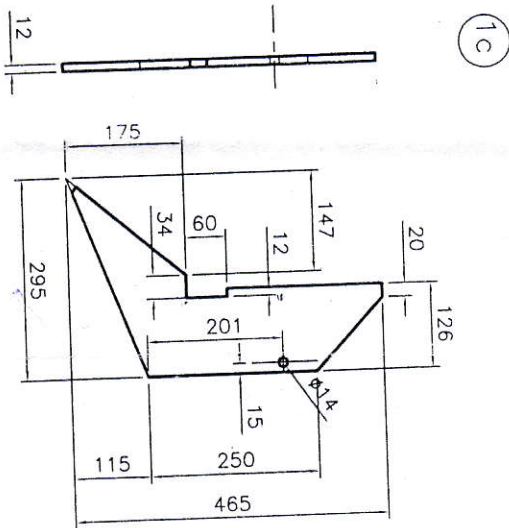
QTY/ASSY: 1



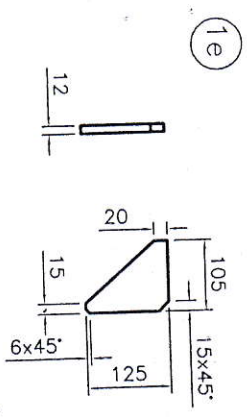
QTY/ASSY: 2



QTY/ASSY: 1



QTY/ASSY: 2



QTY/ASSY: 2

NOTE:

1. ALL DIMENSION ARE IN MM.
2. UNSPECIFIED LIMIT DEVIATIONS ARE ±1MM.
3. MATERIAL:- St 34+S:1079 FOR ALL PLATES, 12 mm THICK.

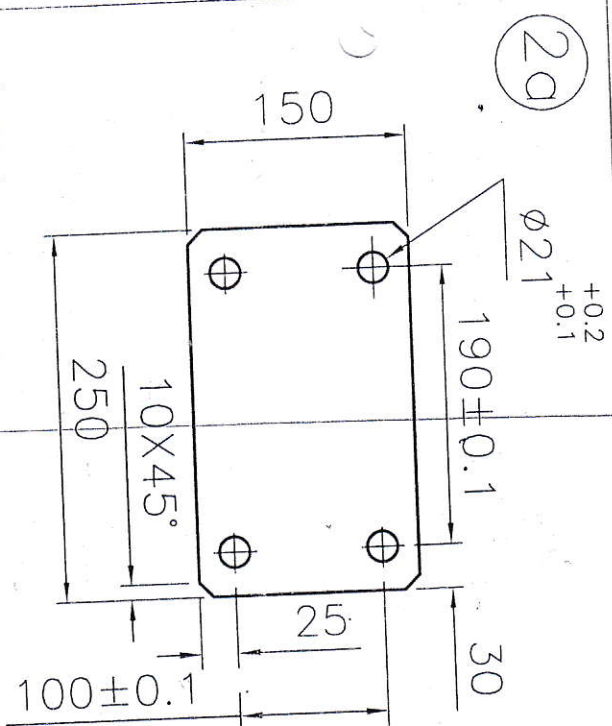
ITEM	DESCRIPTION	NO OFF	MATL	TREAT/SIZE	REMARKS
					DIR/bdc
					UPGRADE BY AD/ODC
					MPV 4X4
					JWM/ODC
					DRN
					CKD
					SCALE
					DATE
					REPLACEMENT FOR
					DRG NO. 2699-57-31
					SHT. 2/4

MOD. STEPNEY MOUNTING ARRANGEMENT ON LH SIDE (LASER CUT ITEMS) FOR UPGRADED MPV 4X4

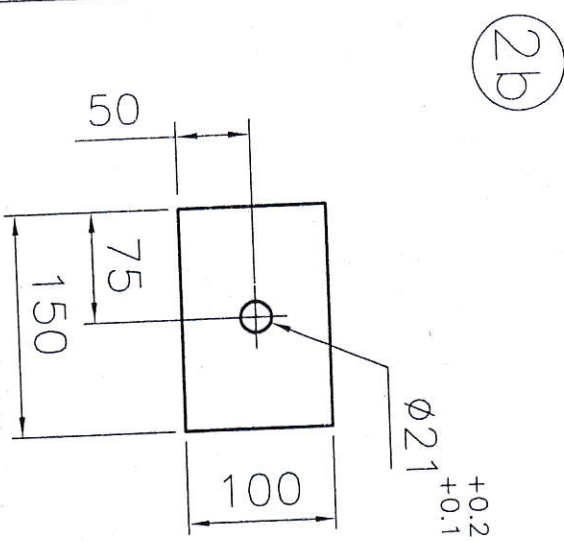
VEHICLE :FACTORY JABALPUR

INDEX	DIMS.	TOL.	ALTERATION	SIGN	DATE
0-30	±0.1				
30-250	±0.2				
250-500	±0.3				
500-2000	±0.5				
2-2000	±0.8				
GEN.TOL.					

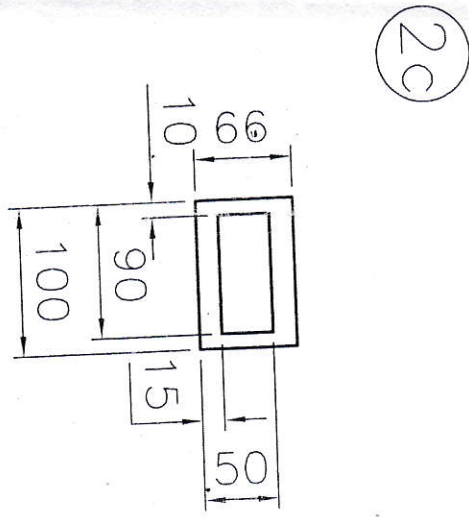
LASER CUT ITEMS FOR ITEM NO. 02 INTERMEDIATE BRACKET



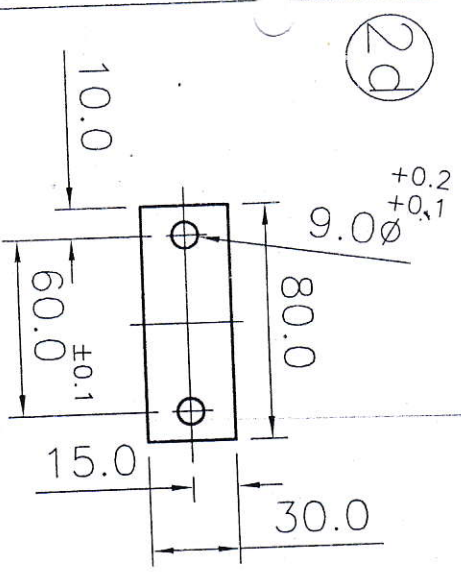
QTY/ASSY: 1



QTY/ASSY: 1



QTY/ASSY: 2

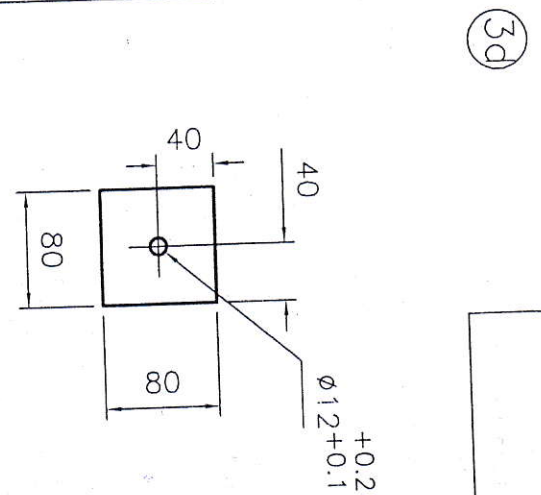
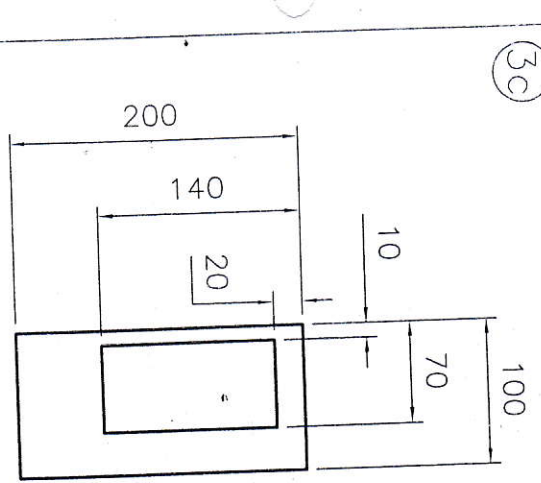
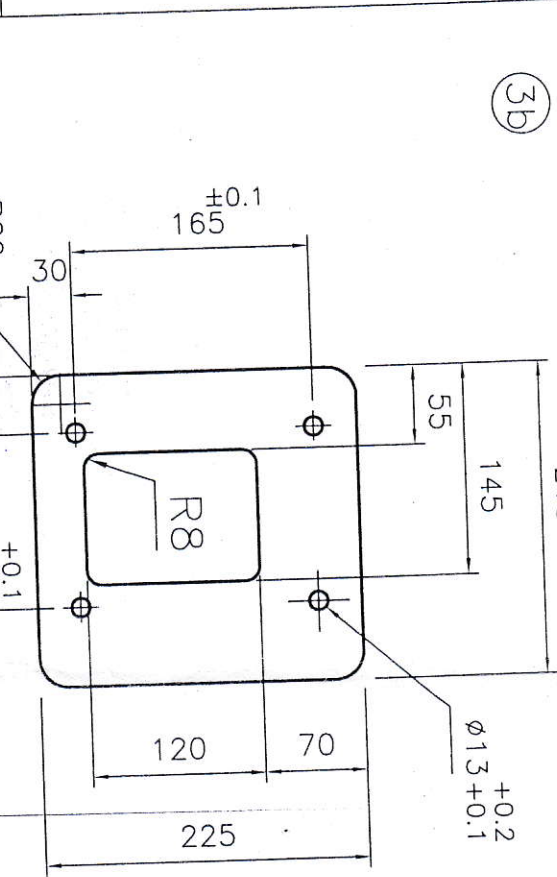
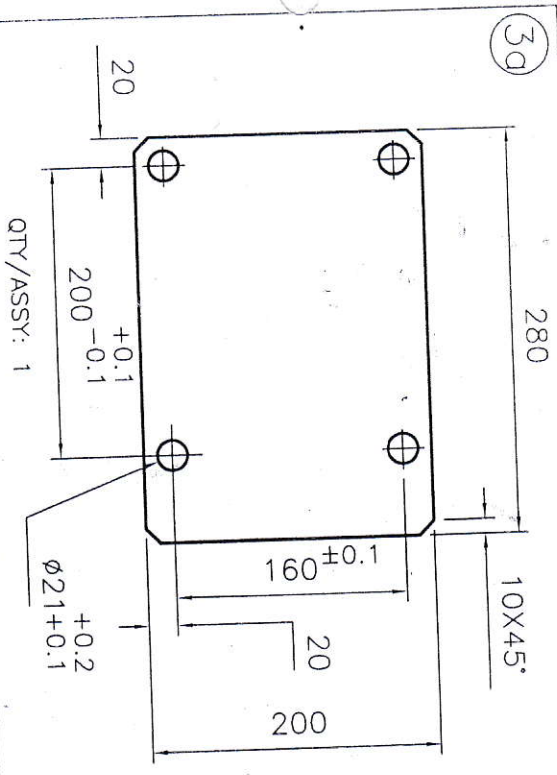


QTY/ASSY: 1

1. ALL DIMENSIONS ARE IN MM.
2. UNSPECIFIED LIMIT DEVIATIONS ARE ±1MM
3. MATERIAL: St 34-IS:1079
FOR ITEM NO. 04, 5mm THICK
FOR ALL REMAINING PLATES-12mm THICK

ITEM	DESCRIPTION	NO.OFF	M/P/TL	TREAT/SIZE	REMARKS
					DIR/ODC
					UPGRADED AD/ODC <i>Vishh</i>
					MPV 4X4
					JMM/ODC <i>Chau</i>
					DIRN <i>Chau</i>
					CKD <i>Chau</i>
	ALTERNATE	SIGN	DATE	ALTERATE NOTE	MODEL APPLICABLE
	MOD. STEPPNEY MOUNTING ARRANGEMENT ON LH SIDE (LASER CUT ITEMS) FOR UPGRADED MPV 4X4				
	VEHICLE FACTORY JABALPUR			REF.DRG. NO.	SCALE
				REPLACED BY	DATE
				REPLACEMENT FOR	
				DRG. NO. 2699-57-31	
					3/4
					SHT

LASER CUT ITEMS FOR ITEM NO. 03 LIFTING BRACKET



1. ALL DIMENSIONS ARE IN MM.
2. UNSPECIFIED LIMIT DEVIATIONS ARE $\pm 1MM$
3. MATERIAL: St 34-1S:1079
FDR ALL PLATES-12mm THICK

ITEM	DESCRIPTION	NO.OFF	MATL	TREAT/SIZE	REMARKS
ODC	VEHICLE FACTORY JABALPUR				

INDEX	DIMS.	TOL.	ALTERATION	SIGN	DATE	REVISION	SCALE
0-30		± 0.1					1:1
30-250		± 0.2					1:1
250-800		± 0.3					1:1
800-2000		± 0.5					1:1
>2000		± 0.8					1:1

ITEM	DESCRIPTION	NO.OFF	MATL	TREAT/SIZE	REMARKS
ODC	VEHICLE FACTORY JABALPUR				

QTY/ASSY: 2

QTY/ASSY: 1

QTY/ASSY: 1

DRG. NO. 2699-57-31

4/4 SHT.