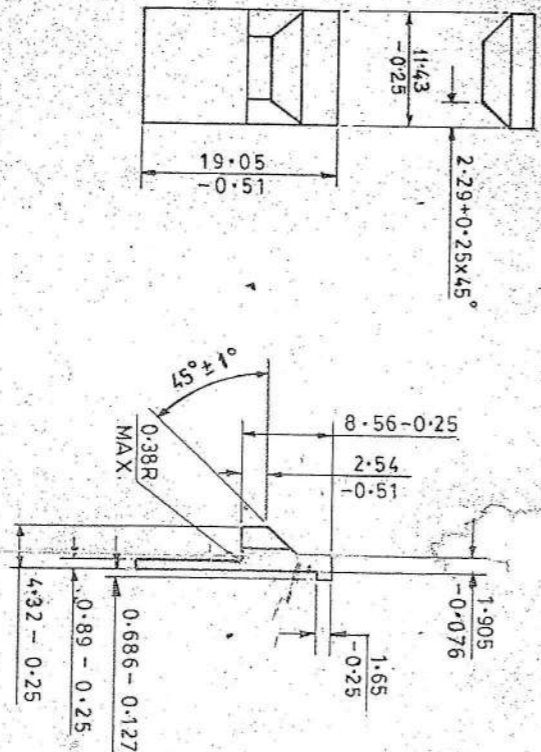


374100-5001  
D.S.CAT. 1005-01740



FOR EXPLANATION SEE D.D. NOTE SHEET NO.3  
DIMNS ARE IN mm.

**NOTE :-**  
WHERE TOLERANCES ARE NOT SHOWN DIMENSIONS IN WHOLE NUMBER OR WITH ONE DECIMAL PLACE 21.27 mm. DIMENSIONS WITH TWO DECIMAL PLACES ± 0.127 mm.  
FOR SPECN. LATEST ISSUE SHOULD BE FOLLOWED.  
EDGES BROKEN 0.25 + 0.25.

UNCONTROLLED COPY  
CERTIFIED-CORRECT COPY OF APPROVED DRAWINGS AT THIS DATE: 10/11/92  
DESIGN & DRAWING OFFICE  
FACTORY TRADING COMPANY

ORIGINAL COPY OF THE DRAWING  
BY: [Signature]  
DATE: 28/10/99  
SCALE: 1:1

ICR/505

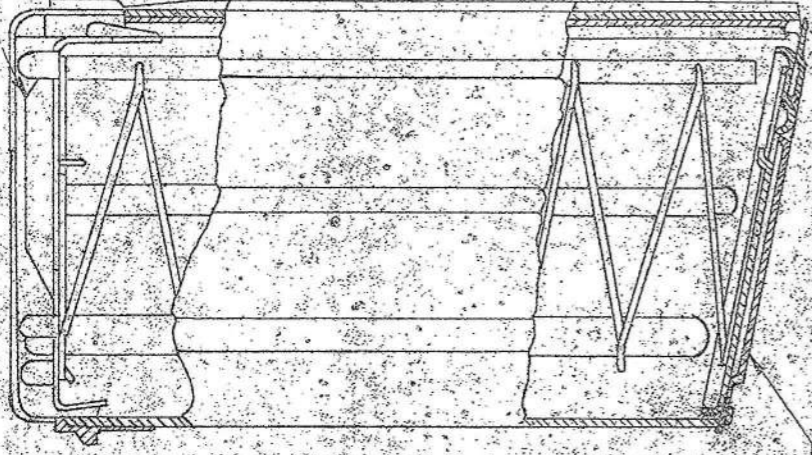
DATE	24.4.92-SA	PROFORMA CHANGED, ACTUAL SIZE VIEW DELETED, NEG. RE-TRACED AND DRG. RE-SEALED.	DRN	CHD.	TRD. SKETCH	COMP. [Signature]	AHSP CQA(SA) ICHAPUR
DATE	18.7.95-SAM18850-SA, 19.3.97-SA, 19.6.93-SA, 2.3.99-SA & 24.8.01-SA	PREVIOUS D.C. NOS. 14332-SA, 5262-SA, 16710-SA, 18.7.95-SAM18850-SA, 19.3.97-SA, 19.6.93-SA, 2.3.99-SA & 24.8.01-SA	SCALE:-	2:1	APPROVED	DI. 19.6.67	ASSY. 1005-001740
DATE	SEALD :- DC. NO. 14332-SA, DT. 27.6.75	BRIEF RECORD	DI	27-8-99	I/C: D.O.	NEG. RE-TRACED	DGNP'S CISA /7
NOMENCLATURE	LOCATING PIECE		PROTECTIVE FINISH:-	ON ASSEMBLY 1005-001740 OR 1005-000343		DRG. NO.	D.S.CAT. 1005-01743

27

24

1005-001744

1005-001740



1005-000344

**NOTE:**

WHERE TOLERANCES ARE NOT SHOWN  
DIMENSIONS IN WHOLE NUMBER OR WITH  
ONE DECIMAL PLACE  $\pm 0.27$  mm.  
DIMENSIONS WITH TWO DECIMAL  
PLACES  $\pm 0.13$  mm.

ICR 84A

METRIC

22245 SA 45.7.93		DATE NAME		ASSY ORG		COA(SA) ICHAPUR	
AUTN		45.7.93		MATERIAL		MAGAZINE	
DATE		45.7.93		DIMENSIONS ARE IN MILLIMETRES		7.62 mm . 2A	
ZONE		SA		D.C.O. 14789-SA		ICR 84A	
BRIEF RECORD		NEGATIVE RETRACED AND DRAWING RESEALED. PREVIOUS D. NO. 14789-SA		SCALE 1:1		APPROVED 19.6.67	
SIGNATURE		SA		D.C.O. 14789-SA		NEG. RE-TRACED DESIGNER'S REF CISA.11	
DATE		45.7.93		D.C.O. 14789-SA		D.S. GAINO 1005-001739	

ICR 84A

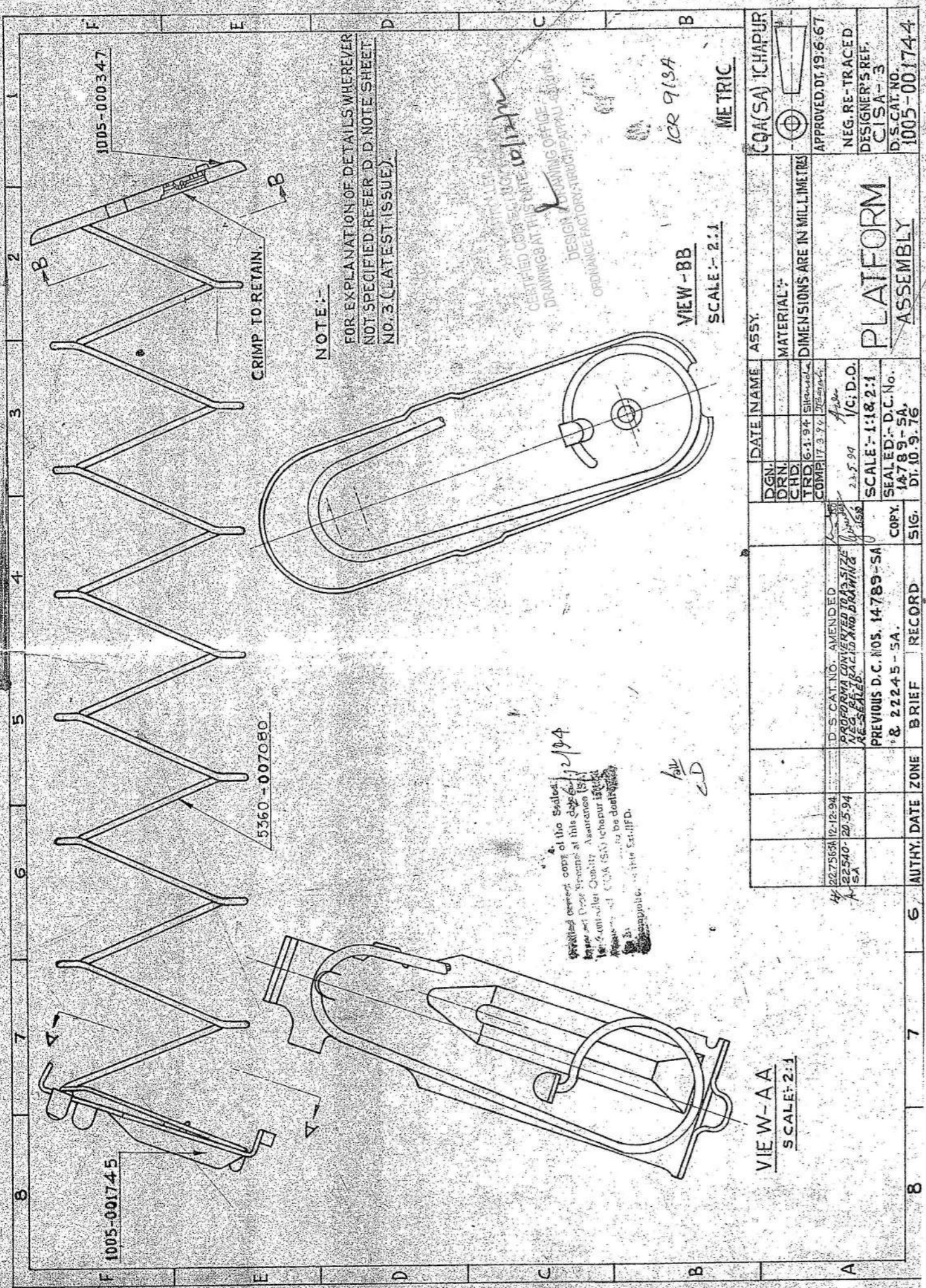
*Handwritten initials*

*Handwritten initials*

101124

CERTIFIED CORRECT  
BY: [Signature]  
DATE: 10/1/74





NOTE:--  
 FOR EXPLANATION OF DETAILS WHEREVER  
 NOT SPECIFIED REFER D.D. NOTE SHEET  
 NO. 3 (LATEST ISSUE).

4. Certified correct copy of the Sealed  
 Paper and Paper Straps at this date 2/2/94  
 by the Contract Quality Assurance (CQA)  
 Inspector of CQA (SA) Ichapur 15/07/94  
 The drawings to be destroyed  
 5. The drawings to be destroyed  
 6. The drawings to be destroyed

all  
 CD

CERTIFIED COPY OF THE SEaled  
 DRAWINGS AT THIS DATE: 01/12/94  
 DESIGN & DRAWING OFFICE  
 ORDNANCE FACTORY, TURRIPIATTAJ

ICR 913A

VIEW-BB  
 SCALE:- 2:1

VIEW-AA  
 SCALE:- 2:1

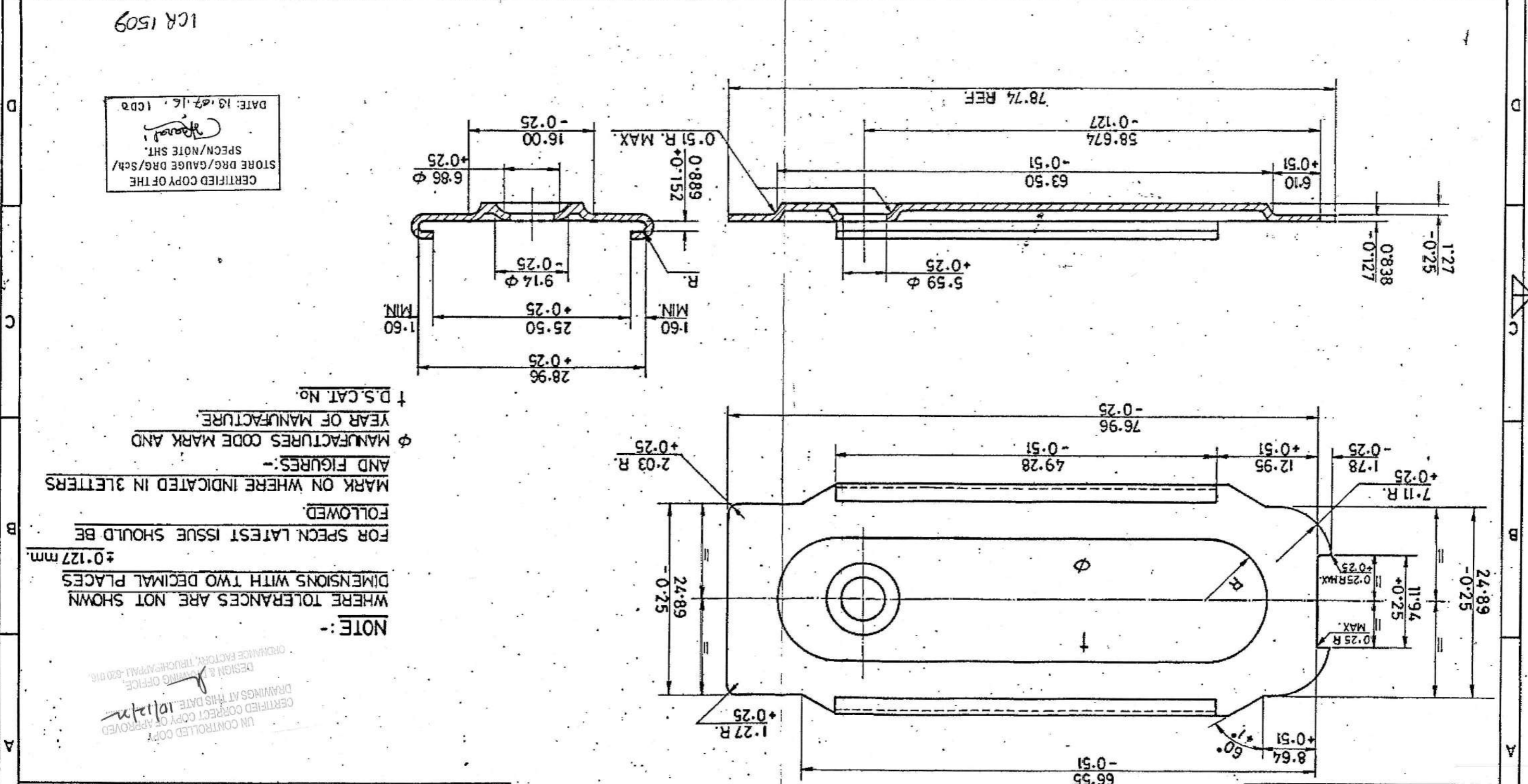
METRIC

DGN.		DATE		NAME		ASSY.	
DRN							
TRD		6.1.94		Sikhandal			
COMPL		17.3.94		D.R.			
D.S. CAT. NO.		12-12-94		AMENDED			
PROFORMA CONVERTED TO A3 SIZE		22540-20594		NEG. RE-TRACED			
PREVIOUS D.C. NOS.		14789-SA		RE-SEALED			
SCALE		1:1 & 2:1		C; D.O.			
SEAL ED		D.C. No.		14789-5A			
DI.		10.9.76		COPY			
AUTHY.		ZONE		BRIEF		RECORD	
G		6		6		6	
7		7		7		7	
8		8		8		8	

CQA(SA) ICHAPUR  
 APPROVED, DT: 19.6.67  
 NEG. RE-TRACED  
 DESIGNER'S REF.  
 CISA-3  
 D.S. CAT. NO.  
 1005-00174-4

PLATFORM  
 ASSEMBLY

NOMENCLATURE <b>PLATE BOTTOM</b>		D.C. No. 14332-SA, DT.27.6.75	
DATE AUTHY	BRIEF RECORD	HT/HARDNESS	PROTECTIVE FINISH
30.8.2008 24817-SA	MATERIAL AMENDED	DT. 11-8-99	PHOSPHATE TO SPECN. JSS:0465-01:1988 CLASS II, PAINT R.E.U. FINISHING AMMUNITION STOVING BLACK SPRAYING FOR SMALL ARMS TO SPECN. IND/ME/881(PROV)(NO PAINTING ON THE SIDE WHICH REMAINS IN SIDE THE MAGAZINE)
11-08-99 24460-SA	PROFORMA CHANGED & REDUCED, ACTUAL SIZE VIEW DELETED, NEG. PREPARED AND DRG. RE-SEALED.	MATERIAL	D.S. CAT. 1005-000344
31-05-16 26829-SA	MATERIAL AMENDED	IS:513:2008 DESIGNATION CR3	DRG. No.
30.8.2008 24817-SA	MATERIAL AMENDED	DT. 11-8-99	PART No.
11-08-99 24460-SA	PROFORMA CHANGED & REDUCED, ACTUAL SIZE VIEW DELETED, NEG. PREPARED AND DRG. RE-SEALED.	APPROVED DT. 19.6.67	REF. CISA/4
31-05-16 26829-SA	MATERIAL AMENDED	NEG. PREPARED	DGNR'S
30.8.2008 24817-SA	MATERIAL AMENDED	SCALE: -- 2:1	ASSY.
11-08-99 24460-SA	PROFORMA CHANGED & REDUCED, ACTUAL SIZE VIEW DELETED, NEG. PREPARED AND DRG. RE-SEALED.	EST. MASS	AHSP COASA, ICHAPUR
31-05-16 26829-SA	MATERIAL AMENDED	TRD.	
30.8.2008 24817-SA	MATERIAL AMENDED	COMP.	
11-08-99 24460-SA	PROFORMA CHANGED & REDUCED, ACTUAL SIZE VIEW DELETED, NEG. PREPARED AND DRG. RE-SEALED.		
31-05-16 26829-SA	MATERIAL AMENDED		



CERTIFIED COPY OF THE  
STORE DRG./GAUGE DRG./Sch/  
SPECN/NOTE SHT.  
DATE: 16.07.16 ICDR

NOTE:-  
WHERE TOLERANCES ARE NOT SHOWN  
DIMENSIONS WITH TWO DECIMAL PLACES  
± 0.127 mm.  
FOR SPECN LATEST ISSUE SHOULD BE  
FOLLOWED.  
MARK ON WHERE INDICATED IN 3 LETTERS  
AND FIGURES:-  
φ MANUFACTURES CODE MARK AND  
YEAR OF MANUFACTURE.  
† D.S. CAT. No.

UN CONTROLLED COPY  
CERTIFIED CORRECT COPY OF APPROVED  
DRAWINGS AT THIS DATE: 10/11/2016  
DESIGN & DRAWING OFFICE  
CHANGE FACTORY, TRUNCHAPUR-520 016





SPRING TO WORK FREELY IN A HOLE OF DIMENSION SHOWN.

L	MATERIAL	DIA. OF WIRE	CAMP TESTING LENGTH	HEAT TREATMENT	TENSILE RANGE.
285.8 ± 12.7	IS: 4454 (Part 2) 21: 2001 Grade VDC	1.78	20.57 FOR 24 HRS	HARDENED AND TEMPERED.	
316.0 ± 14.0	IS: 4454 (Part 1) 2001 Grade 5H OR DH	1.70	19.81 FOR 24 HRS	LOW TEMPERATURE TREATMENT 220°C - 240°C	204.72 TO 220.47 kg/mm <sup>2</sup>

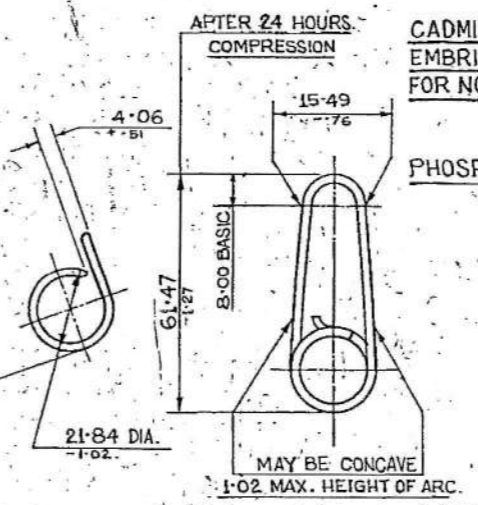
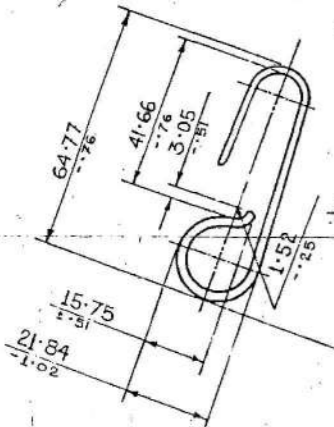
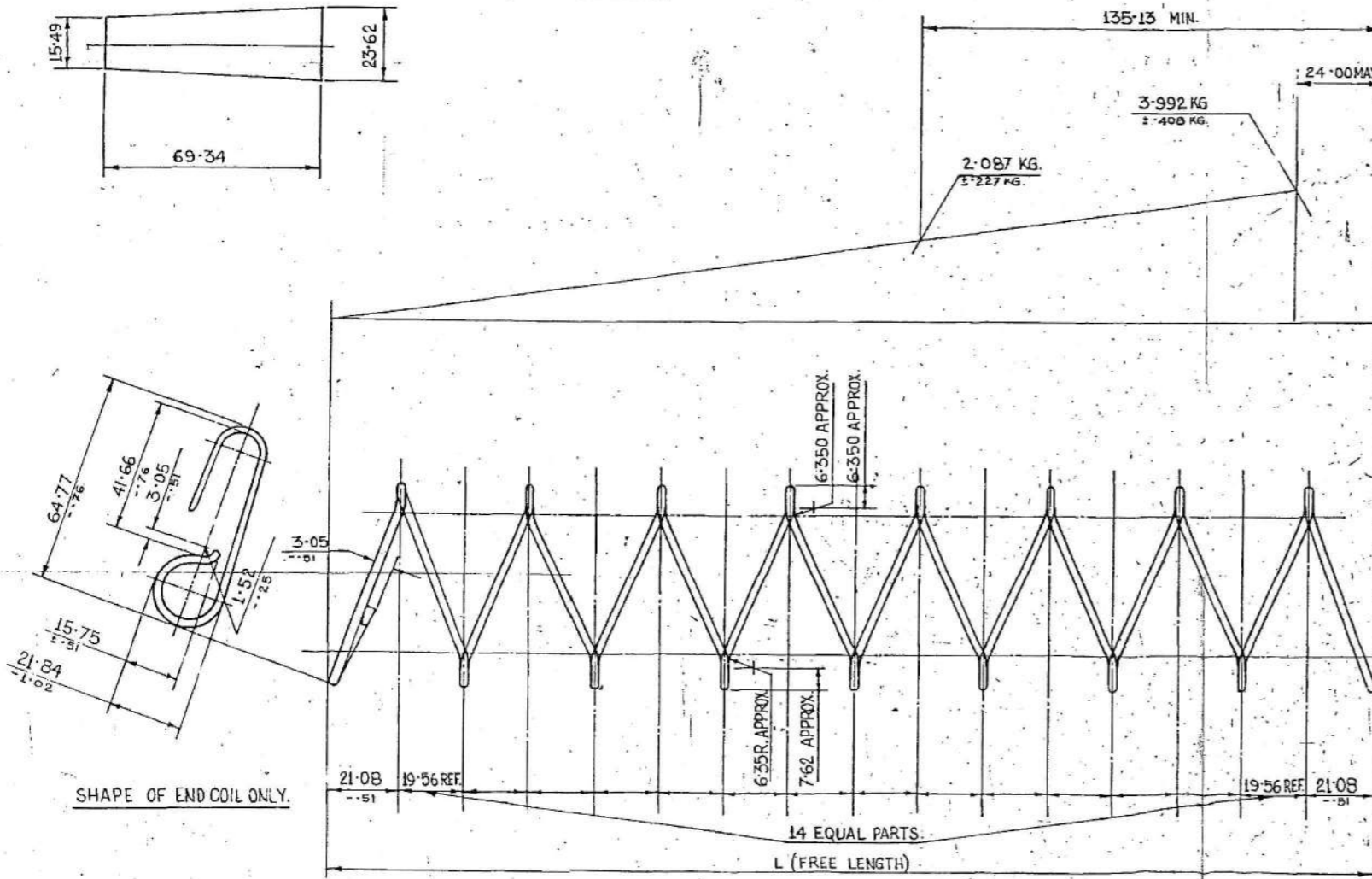
PROTECTIVE FINISH:- ZINC PLATED TO SPECN. IS: 1573 GRADE 'A' TYPE 2 (HYDROGEN EMBRITTLEMENT SHALL BE REMOVED BY BAKING AT 190°C - 210°C FOR NOT LESS THAN 4 HOURS, BEFORE 16 HOURS AFTER PLATING.)

OR

CADMIUM PLATE TO SPECN. IS: 1572 GRADE 'A' TYPE 2 (HYDROGEN EMBRITTLEMENT SHALL BE REMOVED BY BAKING AT 190°C - 210°C FOR NOT LESS THAN 4 HOURS, BEFORE 16 HOURS AFTER PLATING.)

OR

PHOSPHATE TO SPECN. ISS 10465:01 CLASS-I OIL FINISH.



TOTAL NUMBER OF COILS - 8  
LEFT HAND WOUND.

NOTE:-  
WHERE TOLERANCES ARE NOT SHOWN  
DIMENSIONS IN WHOLE NUMBER OR  
WITH ONE DECIMAL PLACE ± 0.27 mm  
DIMENSIONS WITH TWO DECIMAL  
PLACES ± 0.127 mm

UN CONTROLLED COPY  
CERTIFIED CORRECT COPY OF APPROVED  
DRAWINGS AT THIS DATE 10/12/22

DESIGN & DRAWING OFFICE  
ENGINEERING FACTORY, TELUCHI APALLI, GUNTUR

CERTIFIED COPY OF THE  
STORE DROUGAUGE ORG/Sch/  
SPECN/NOTE SHY.  
DATE 13.02.16. 1000

ICR 1508

AUTHY	DATE	ZONE	BRIEF RECORD.	SIG.	DT.	10.9.76.	SCALE:- 1:1	COPY	PREVIOUS D.C. No. 14789-SA, 14881-SA, 14679-SA, & 19415-SA.	NEGATIVE RETRACED & DRAWING REISSUED	D.S. CAT. NO.	5360-007080
26825A	11-05-16		MATERIAL AMENDED									
24136-SA	14-7-98		MATERIAL AMENDED									
23614-SA	13-12-94		MATERIAL AMENDED & ALT. MATERIAL DELETED.									
22756-SA	12-12-94		D.S. CAT. NO. AMENDED									
22243-SA	6-7-93		NEGATIVE RETRACED & DRAWING REISSUED									

COA(SA)ICHAPUR

MATERIAL:- AS ABOVE

DIMENSIONS ARE IN MILLIMETRES.

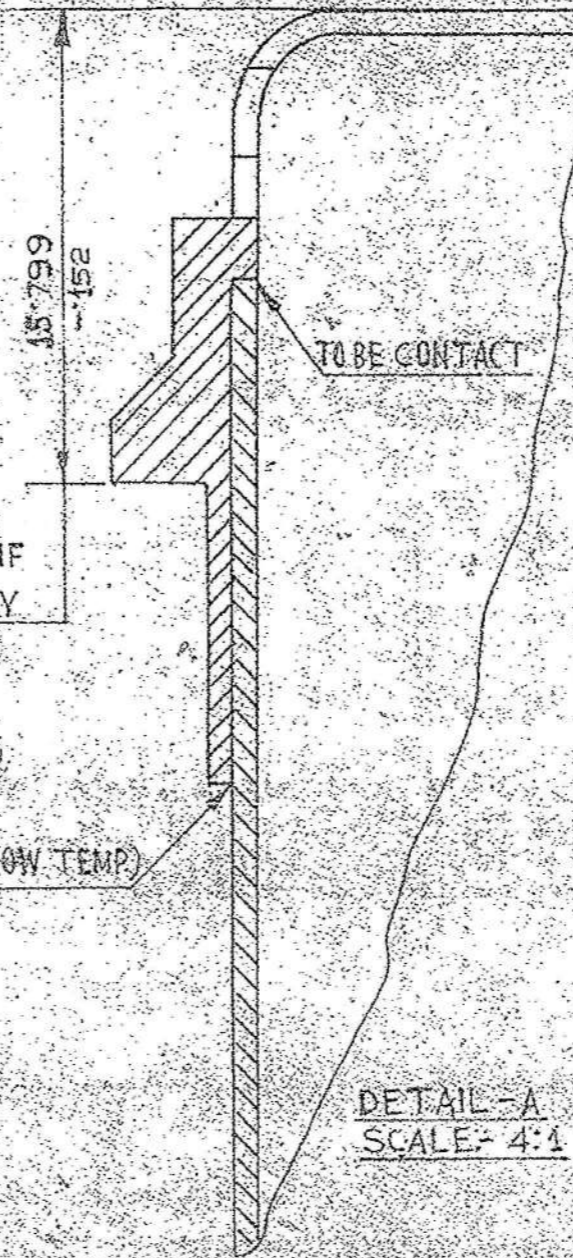
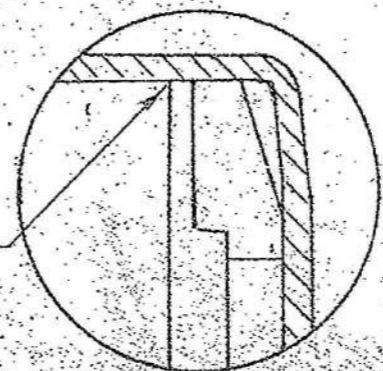
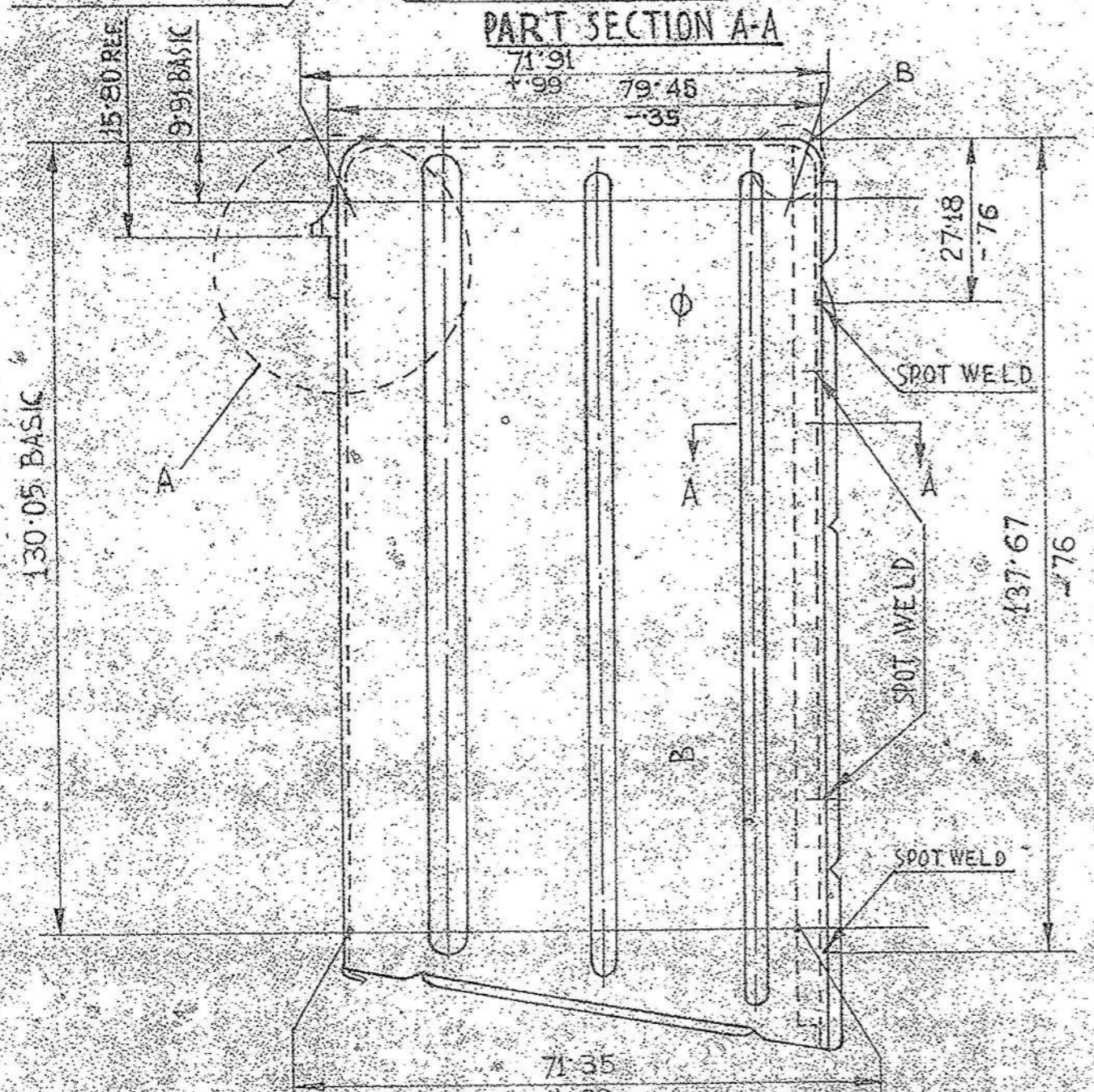
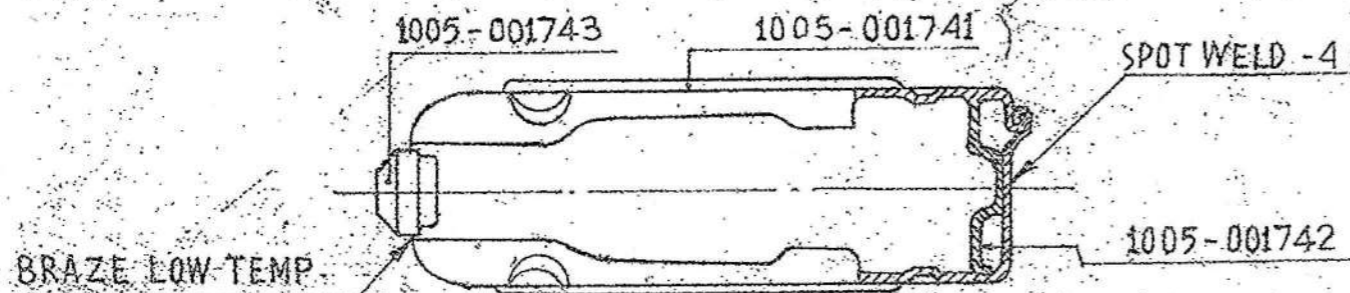
APPROVED BY: 19.6.61

NEG. RETRACED

DESIGNER'S REF. CISA/10

D.S. CAT. NO. 5360-007080





NOTE :-  
FOR EXPLANATION OF DETAILS  
WHEREVER NOT SPECIFIED  
REFER D.D. NOTE SHEET NO. 3 (LATEST ISSUE)

PROTECTIVE FINISH :-  
PHOSPHATE TO SPECN. JSS 0465-01:1988 CLASS II  
(ACCELERATED) INTERNALLY OIL FINISH, EXTERNALLY  
PAINT R.F.U FINISHING AMMUNITION STOVING  
BLACK SPRAYING FOR SMALL ARMS TO  
SPECN. JSS: 8010-37

MARK ON WHERE INDICATED (SIZE OF  
OF LETTER 3.)  $\phi$  CONTRACTORS CODE MARK  
& YEAR OF MANUFACTURE B 1005-001739

ON CONTROLLED COPY  
CERTIFIED CORRECT COPY OF ORIGINAL  
DRAWING DATE: 10/12/04

ICR 908A

METRIC

26/12/04  
This copy of the drawing is the property of the organization. It is to be used for the purpose for which it was issued. It is not to be reproduced, copied, or otherwise used without the written permission of the organization. If this drawing is destroyed, a replacement will be issued.

AUTHY		DATE	ZONE	BRIEF RECORD	SIG.	DATE	NAME	ASSY.	DS. CAT. No.	CQA(SA) ICHAPUR
		22.5.94		PROFORMA CONVERTED TO A3 SIZE PROT. FINISH AMENDED. DS. CAT. NO. ADD ED. ON ASSY. COLUMN. NEG. RE-TRACED AND DRAWING RE-SEALED		22.5.94	A. BARIK I/C, D.O.	1005-001739	1005-001740	APPROVED Dt. 23.6.67
				PREVIOUS D.C. Nos. 14789-SA, 15946-SA, 17254-SA, 22199-SA.	COPY					NEG. RE-TRACED
										DESIGNER'S REF CISA - 2
										DS. CAT. NO 1005-001740

CASE MAGAZINE

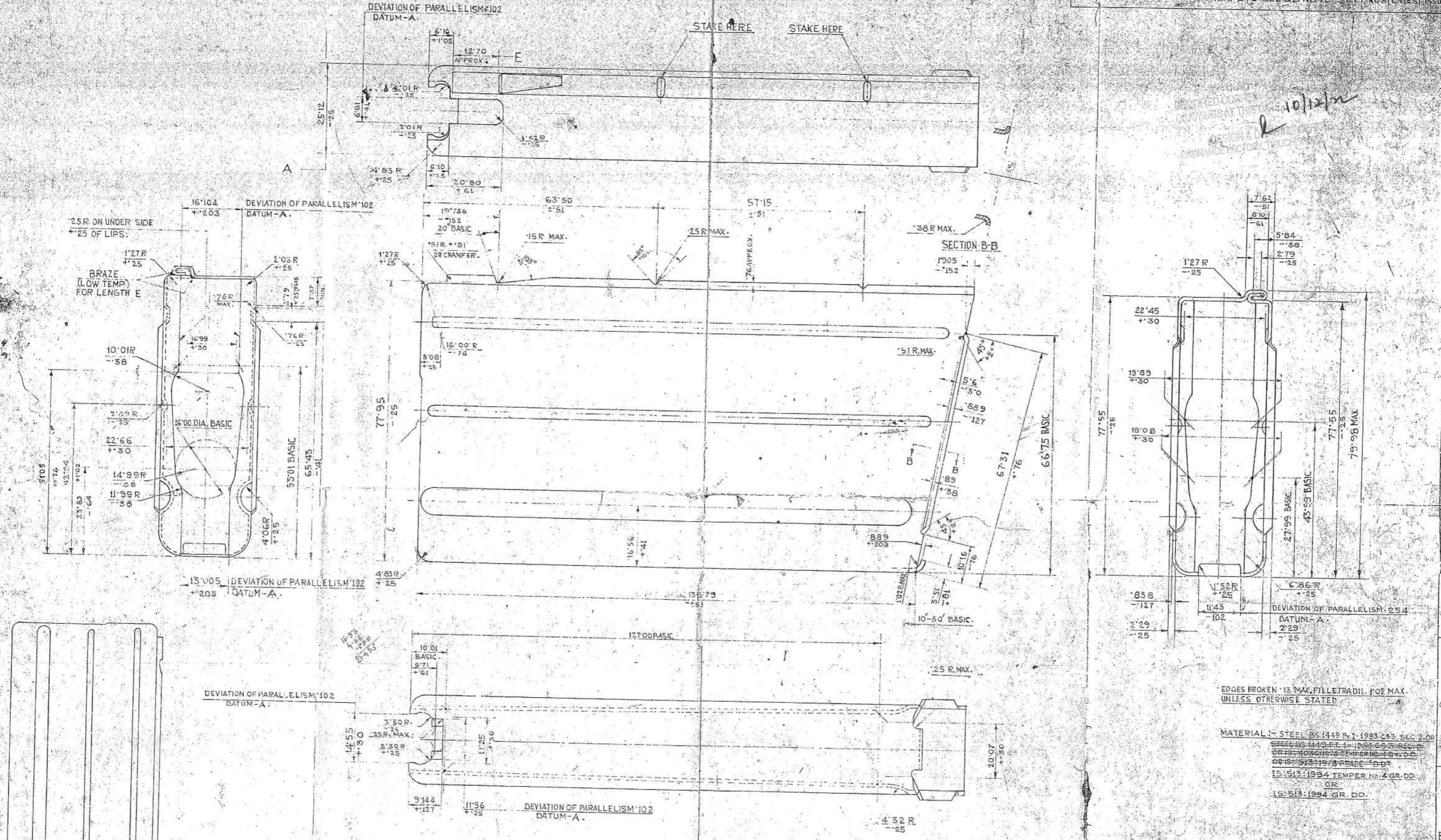
DGN.  
DRN.  
CHD.  
TRD. 5-1-94  
COMP.

SCALE :- 1:1, 4:1  
SEALED - D.C. No.  
14789-SA, Dt. 10.9.76

DIMENSIONS ARE IN MILLIMETRES



DESIGNED BY: 10/12/71  
 ORDNANCE FACTORY TRUCK



BRAZING TO BE IN ACCORDANCE WITH BS 1723  
 FILLER ALLOYS FOR BRAZING TO BE IN ACCORDANCE  
 WITH BS 1845 OR OTHER APPROVED FILLERS.

EDGES BROKEN .13 MAX. FILLETTED. FOR MAX. UNLESS OTHERWISE STATED.

MATERIAL: - STEEL BS 1449 Pt. 1983 C55 SEC. 2 OR  
 STEEL BS 1449 Pt. 1 1983 C55 SEC. 2  
 OR IS 1030/1075 TEMPER NO. 19 W.D.  
 OR IS 513/1978 TRADE 'DD'  
 IS 513:1994 TEMPER NO. 4 GR. DD  
 OR  
 IS 513:1994 GR. DD.

NOTE: FOR SPEC. LATEST ISSUE SHOULD BE FOLLOWED.

12-12-95  
 Quality Assurance (QA)  
 Copy this inspection  
 to be destroyed  
 in accordance of this Int-IPD.

NO.	DATE	DESCRIPTION	BY	DATE	NAME	ASSY. DRG.	CHECKED
22868	16-2-95	MATERIAL AMENDED					
22275	21-9-93	MATERIAL ADDED					
22180	5-4-93	MATERIAL AMENDED & DRAWING RE-SEALED					
19128	18-7-85	YEAR OF MATH. SPEC. AMENDED & NOTE TO BE ADDED					
17801	17-5-84	CL. VEG. RETRACED. EXPLANATIONS TO BE AMENDED. TOLERANCE NOTE DELETED & DRG. RE-SEALED IN REPLACEMENT					
		REVISED D.C. NO. 1478					
		SA. N. 503 SA. 15173 SA.					

SCALE: 2:1  
 AUTHY: DATE: ZONE: BRIF: RECORD: SIG: 17801-513

1005-001741

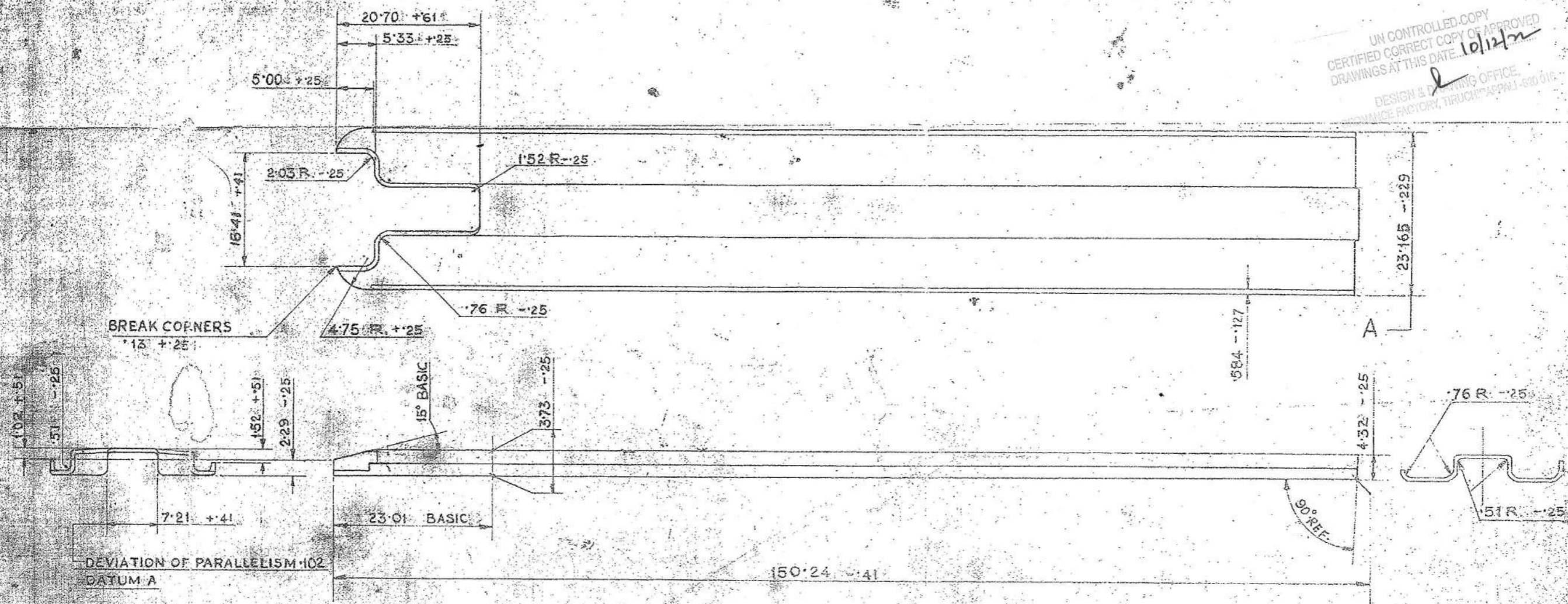
APPROVED: 01.19.87  
 CL. NEG. RETRACED  
 DESIGNER'S REF.  
 CISA/5  
 DS. CAT. NO.  
 17801-513



DS CAT. NO.  
1005-001742

FOR EXPLANATION SEE D.D. NOTE SHE. NO. 3.  
THIRD ANGLE PROJECTION. DIMENSIONS ARE IN MILLIMETRES.

UN CONTROLLED COPY  
CERTIFIED CORRECT COPY OF APPROVED  
DRAWINGS AT THIS DATE. 10/12/20  
DESIGN & DRAWING OFFICE  
FINANCE FACTORY, TIRUCHI APPAL-530 016



NOTE:-  
WHERE TOLERANCES ARE NOT SHOWN  
DIMENSIONS IN WHOLE NUMBER OR WITH  
ONE DECIMAL PLACE, 0.127mm.  
DIMENSIONS WITH TWO DECIMAL PLACES 0.127mm.

ALT. MATERIAL:-  
IS: 513:1973 GRADE D-D

NOTE:-  
FOR SPECN. LATEST ISSUE  
SHOULD BE FOLLOWED.

ACTUAL SIZE

\* REF:- Letter No. MQA-1/GRSPL/59 FROM CQA (METALS) DT. 03.04.97

EDGES BROKEN 13 MAX. 1CR/504  
MATERIAL:- STEEL BS. 1449 PART 1-(1983) CS 3 SEC 2. OR 1994  
IS: 513:1986 TEMPER NO. 4 GR. DD  
ALT. MATERIAL IS: 513:1986 GR. DD. 1994 METRIC

DATE	AUTHY.	ZONE	NATURE	SIG.
21-9-93	22276-SA		MATERIAL ADDED	
5-4-93	22181-SA		MATERIAL AMENDED	
18.7.86	19128-SA		YEAR OF MATL. SPECN. AMENDED & NOTE FOR SPECN. ADDED	
13.12.79	16154-SA		ALT. MATL. ADDED	
23.5.77	15153-SA		MATL. AMENDED	
12.9.76	14789-SA		DRG. SEALED	
AMENDMENTS				

28/09/93  
Aut  
Lc)

PROTECTIVE FINISH :- ON ASSEMBLY MATERIAL :- STEEL BS. 1449 PART 1-(1983) CS 3 SEC 2. OR 1994  
C1005-001740) 1987 CS 3 SEC 2 OR IS 1030-1973 MEMBER NO. 4 GRADE D-D

ASSY. DRG. NO.  
INSP. INSTRS.  
DRAWN: [Signature] CHECKED: [Signature] TRACED: [Signature] TRN. CHD.  
APPROVED: [Signature]  
DATE: 18-6-87 / 1/1/1994 FOR SISA  
DESIGNER'S REF. CISA/G  
DS CAT. NO. 1005-001742  
CISA ICHADUR  
9102/1504

GUIDE

SEALED :- D.C. (S) 14789-SA / 12-9-76