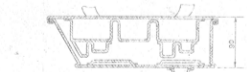


SECTION A-A
SCALE 3/4"

SECTION B-B
SCALE 1/2"



SECTION B-B

DRAWING CONVENTIONS REFER TO MIL-STD-883C

COTTON WOUND THREAD FUSED STITCHING AND NOT GLASSY NO. 1000000000
NOT LESS THAN 1/8" STITCHING PER 30" IN A SEAM.
THE REST OF THE REQUIREMENTS ARE AS PER MIL-STD-883C PART 2.10

MATERIAL FOR FABRIC
COTTON WOUND THREAD
OPEN NAVY NO. 80 TO 80000, 28/1700-78

MARKING NOTES
TO BE MARKED ON COMPONENT BY
PAINTING (WITH 1/8" MIN. LETTER SIZE)
1 MANUFACTURER'S CODE
A-3 OF 142

SCHEDULE OF PARTS		
SL. No.	DESCRIPTION	Qty.
1	FRONT PART	1
2	BACK PART WITH REEL	1
3	INTERNAL POCKET WITH SPOOL	1
4	LOOP	2



A3800

PART NO. 1 PART NO. 2 PART NO. 3 PART NO. 4	MANUFACTURER'S APPROVED MANUFACTURER'S APPROVED MANUFACTURER'S APPROVED MANUFACTURER'S APPROVED MANUFACTURER'S APPROVED	DATE DATE DATE DATE DATE	BY BY BY BY BY	CHECKED CHECKED CHECKED CHECKED CHECKED	APPROVED APPROVED APPROVED APPROVED APPROVED
--	---	--------------------------------------	----------------------------	---	--

MATERIAL IS UNTESTED
 MATERIAL IS UNTESTED
 MATERIAL IS UNTESTED
 MATERIAL IS UNTESTED
 MATERIAL IS UNTESTED

FOR ALL INFORMATION
 CONTACT THE MANUFACTURER
 OR THE SUPPLIER

MANUFACTURER'S CODE
 A-3 OF 142

SCALE: 1/2"
 SCALE: 3/4"
 SCALE: 1/2"
 SCALE: 1/2"
 SCALE: 1/2"

BAG FOR SPARE PARTS
 AND ACCESSORIES OF
 MIL-STD-883C PART 2.10

9440-000019