


8 7 6 5 4 3 2 1

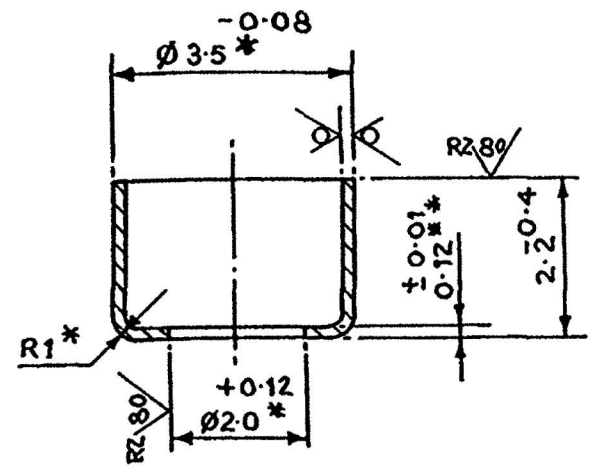
DRG. CONVENTIONS CONFORM TO IS: 696
DIMNS. ARE IN mm.

56D
D2040

2.5/ [✓]



PART No
DC. 35324 - A.



SPECIFIED MATL:-

AL FOIL, GRADE A5-M-0.12, GOST 618-73

COATING:-

CHEMICAL PASSIVATION FOLLOWED BY SHELLAC (4-7%)

INDIGENOUS MATERIAL:-

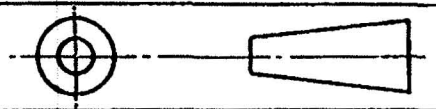
ALUMINIUM IS-737²⁰⁰⁸ DESIG.-19500. CONDN. 'O'

NOTE:-

- 1.* DIMNS. ARE ENSURED BY TOOL.
- 2.** DIMN. IS GIVEN FOR REFERENCE.

05-01-2011	DGQA S.O. Sec. I Chap 10 para 40	Drg. scan, clean & edit without change 8. m/c replaced in supersession of existing dilapidated copy of same No.			
3-11-2010	D.C. 37271-A.	MATERIAL UP DATED.			
3-7-92		TRACED WITHOUT CHANGE.			
18-5-92	D.C. 35324-A	DRG. PROV. SEALED.			
RN ^o	DATE	AUTHORITY	REVISION	ZONE	AHSP D.O. SIGN
DRG. SEALED:- 18-5-92					

DRN:- SD/-	CHD:- SD/-	TRD:- <i>SDG</i>	COMP:- <i>SDG</i>
SD/- CD/MAN	SD/- OI/CDO	SCALE:- 10:1	EST. MASS:- 0.007g
APPD.	SD/- FOR CQA (A)	GAUGE SCHD:-	DATE:- 10-4-92
MATL:- AS ABOVE		PROTECTIVE FINISH:- AS ABOVE	

ASSY DRG.	
DESIGNER'S REF.	DET. 1
CQA(A)/AMN/2860	
PART No	
D.S. CAT No	
AHSP:- CQA(A) KIRKEE	

CAP II-1
(AS PER OCT. B 84-1558-78)