

DS CAT N

1015-000643

FOR EXPLANATION OF DIMENSIONING ETC SEE ARDE NOTE SHEET N 1

DIMENSIONS ARE IN mm UNLESS OTHERWISE STATED

TO BE SECURED BY CENTRE PUNCHING THREADS.

1015-000647-1

1015-000648-1

3110-002692-1

BALL DIA 5/16" TO SPECN. IS:4398-1994,

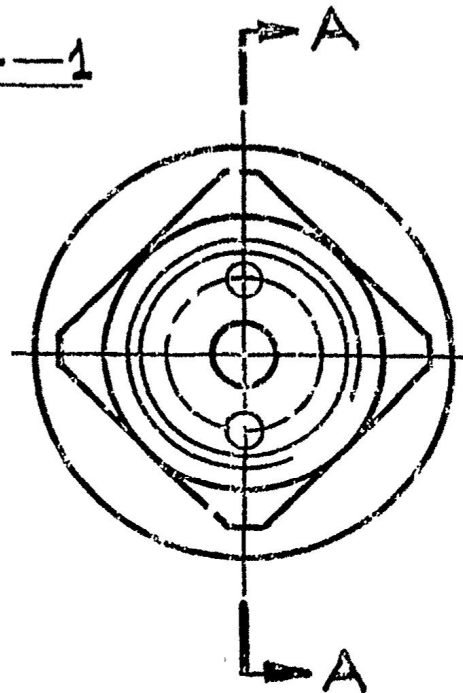
Gde 104 CR6

1015-000644-1

5310-001533-1

SEATING TO BE MADE BY
LIGHTLY TAPPING ON A
BALL AND THEN REPLACING
BY A NEW BALL

SECTION A A



1015-000646-1

1015-000645-1

					CQA(W) JABALPUR	
25-5-13	19325-W	ZONEC/J-3 MATL AMENDED			DRN	CHD
30.10.07		SCANNED & PRINTED WITHOUT CHANGE			SCANNED MK	CHD
DATE	AUTH	ZONE	AMENDMENTS	SIG AHSP	APPROVED	AHSP
PREV DC NoS 15961-W, 16095-W, 18825-W & 18897-W DATED 22-02-03					DO	FOR CQAW
DRG SEALED 16095-W DATED 23.12.83					ASSY DRG 1015-000541	
SCALE 2 : 1		ESTD mass		DATE	DESIGN No D6P- 3113 SA	
MATERIAL					PART No IFL- 850 SA	
PROT FINISH					DS CAT No 1015-000643	
VALVE ASSY वाल्व असेम्बली						