

1. UNSPECIFIED LIMIT DEVIATIONS OF DIMENSIONS ARE AS FOLLOWS:
 FOR HOLES - AS PER A₇
 SHAFTS - AS PER B₇
 OTHERS - AS PER CM₇
2. SURFACE 'A' MAY HAVE ROUGHNESS ∇.
3. PERMISSIBLE COATING: 0.1.
4. IT IS ALLOWED TO APPLY STAMP ON THE TAG.
(PART 540-551) FOR BATCH OF PARTS AND SEAL
5. DIMENSIONS ARE PROVIDED WITH TOOLS.

EXPLANATORY NOTE :-

MATERIAL QUOTED : BRASS(C59-1)
 GOST 15527-70

EXTRUDED BRASS CIRCULAR RODS.

C59-1 = GRADE OF BRASS

a) CHEMICAL COMPOSITION : (As per GOST 15527-70)

COMPONENT	VALUE	AD MIXTURES (max)
COPPER	= 57.0 - 60.0	IRON = 0.5
LEAD	= 0.8 - 1.5	ANTIMONY = 0.010
ZINC	= REMAINDER	BISMUTH = 0.003
		PHOSPHORUS = 0.02
		TIN = 0.30
		TOTAL AD MIXTURES = 0.75

b) MECHANICAL PROPERTIES : (AS PER GOST 2060-73)

ULTIMATE TENSILE STRENGTH Kgf/cm^2	= 37 (min)
% RELATIVE ELONGATION	= 19 (min)

PILOT SAMPLE SHOULD BE APPROVED BY A H S P BEFORE BULK PRODUCTION

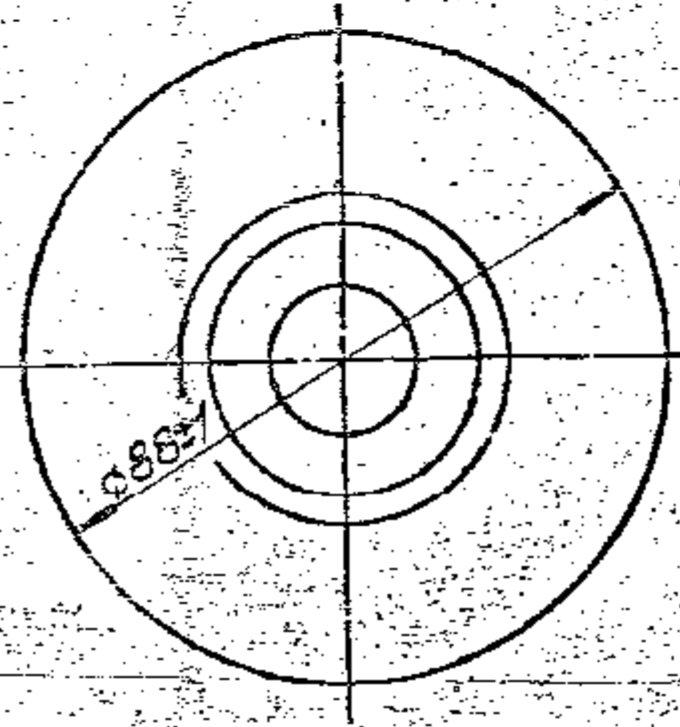
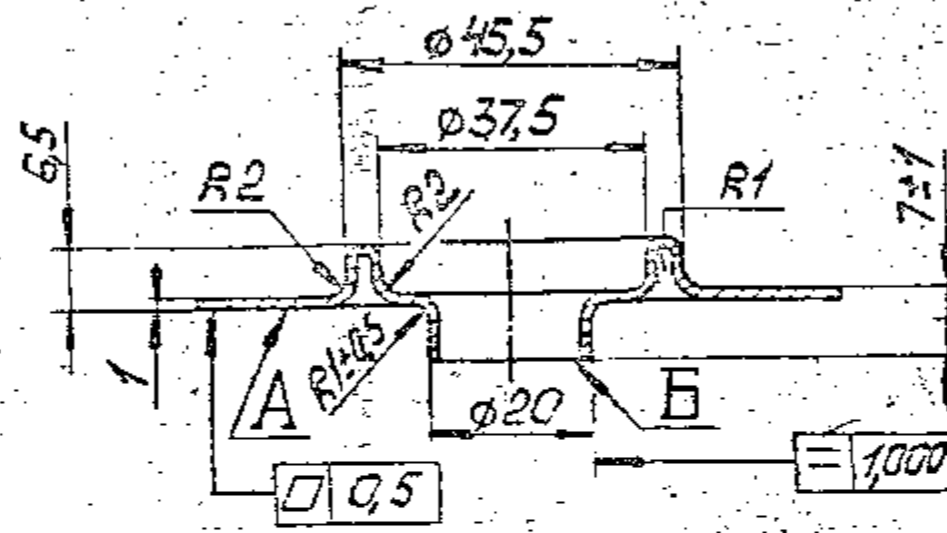
EST. WT. 0.02 Kg.	TO BE STAMPED OR MARKED WHERE INDICATED THIS # LETTERS)
ALL SHARP EDGES AND CORNERS TO BE REMOVED UNLESS OTHERWISE STATED MACHINED CORNERS TO HAVE R OUTSIDE R INSIDE EQUIVALENT CHAMFERS ARE PERMISSIBLE.	

DRN	APPROVED	MATERIAL :-	USED ON :-
EDD	8-2	LC - 59 - 1	CD 329-02-3
TTD	N.V.	GOST 15527-70	
APPD		CONTROLLERATE OF QUALITY ASSURANCE (HEAVY VEHICLES)	
DATE	30-12-87	AVADI	
SCALE	2:1		
DIMENSIONS IN mm			
TOLERANCE ON DIMS UNLESS OTHERWISE STATED IS 202-89		TITLE	SCREEN BOTTOM
ALL THREADS TO CONFORM TO		D S CAT NUMBER	
ISSUE	DATE	NATURE OF AMENDMENTS	DRAWING NUMBER 329-11-2





DRAWING NUMBER
329-13-5



1. PROVIDE DIMENSIONS WITHOUT TOLERANCE WITH AN ACCURACY OF $\pm 0.5\text{mm}$.
2. BUTT-END 'B' MAY HAVE RUPTURES.
3. CIRCULAR CORRUGATION ON SURFACE 'A' IS ALLOWED.
4. PERMISSIBLE COATING : 0.6.
5. THICKNESS OF THE MATERIAL AT THINNED PLACES SHOULD BE ATLEAST 0.6mm.

EXPLANATORY NOTE :

MATERIAL QUOTED : SHEET 163 M1 GOST 931-78.

163 = GRADE OF BRASS.

M = CONDITION OF MATERIAL - SOFT

1 = THICKNESS IN mm.

CHEMICAL COMPOSITION : (AS PER GOST 15527-70)

MAIN ELEMENTS :

COPPER = 62.0 - 65.0

ZINC = REMAINDER

AD MIXTURES : (maximum)

LEAD = 0.07 , IRON = 0.20 , ANTIMONY = 0.005 , BISMUTH = 0.002

PHOSPHORUS = 0.01 , TOTAL = 0.5

MECHANICAL PROPERTIES : (AS PER GOST 931-78)

ULTIMATE TENSILE STRENGTH Kgf/mm^2 = 30 - 41

ELONGATION % = 38(min)

BRINNEL HARDNESS = 70(max)

PILOT SAMPLE SHOULD BE APPROVED BY A H S P BEFORE BULK PRODUCTION.

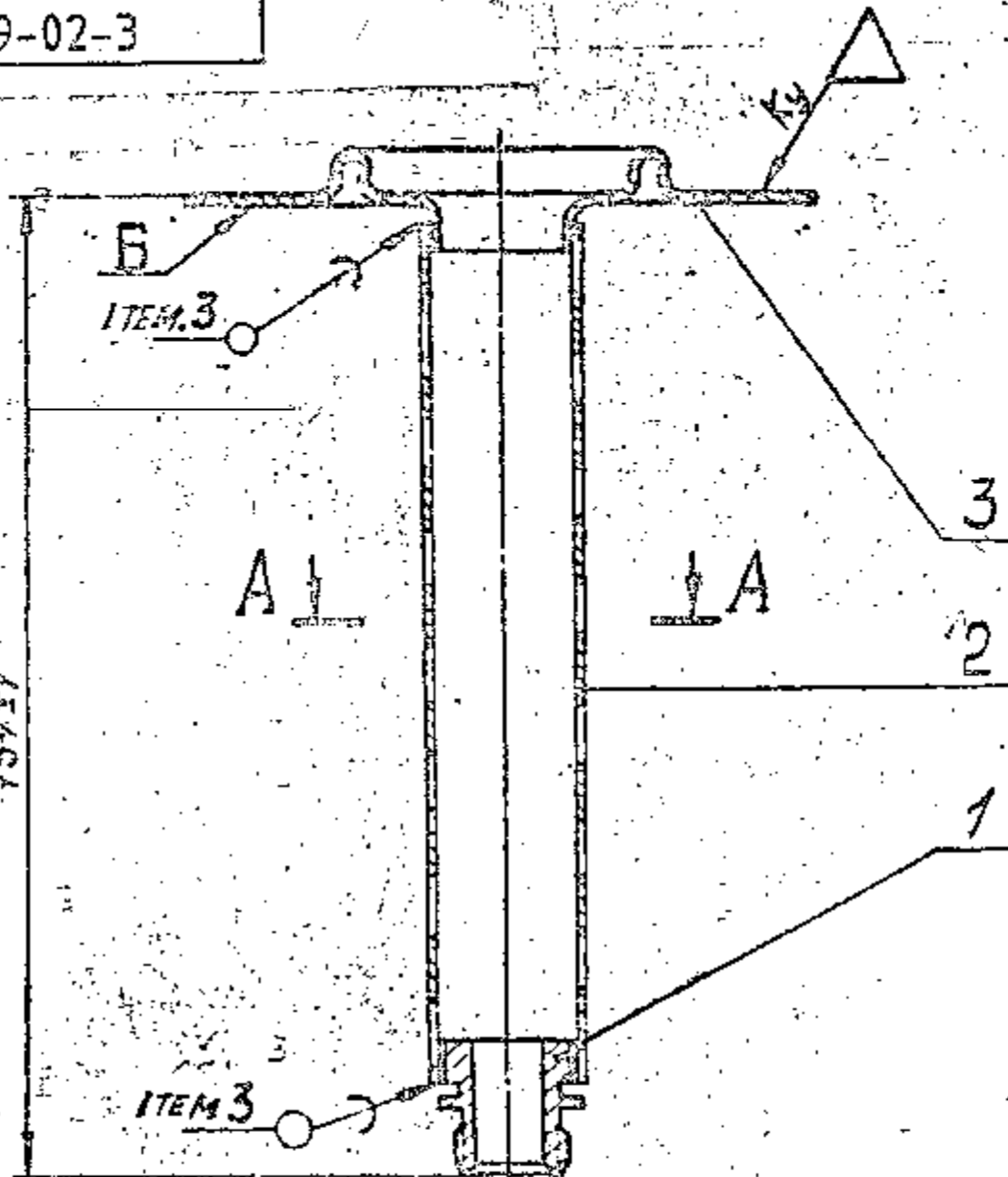
EST. WT. 0.050 Kg	TO BE STAMPED OR MARKED WHERE INDICATED THIS \neq LETTERS)
ALL SHARP EDGES AND CORNERS TO BE REMOVED UNLESS OTHERWISE STATED MACHINED CORNERS TO HAVE R OUTSIDE R INSIDE EQUIVALENT CHAMFERS ARE PERMISSIBLE.	

DRN	CHD	TCO	APPD	DATE	SCALE	TOLERANCE ON DIMS UNLESS OTHERWISE STATED IS 2102-69	ALL THREADS TO CONFORM TO	ISSUE	DATE	NATURE OF AMENDMENTS
				30-12-87	- 1 : 1					
MATERIAL - SHEET 163 M1 GOST 931-78						CONTROL RATE OF QUALITY ASSURANCE (HEAVY VEHICLES)		USED ON - CB 329-02-3.		
TITLE						DRAWING NUMBER		329-13-5		
PLATE										



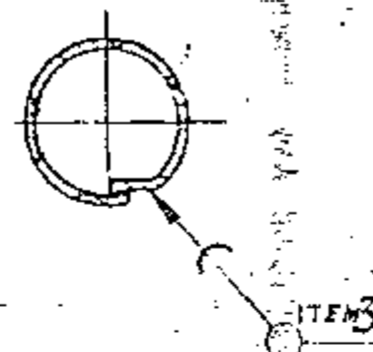
DRAWING NUMBER

CB 329-02-3



1. TOLERANCE ON SQUARE-NESS OF SURFACE B WITH RESPECT TO THE FILTER SCREEN AXIS SHOULD NOT EXCEED 0.5mm AS PER DIAMETER OF 86mm.
2. SCREEN SURFACE SHOULD BE KEPT FREE FROM SHARP EDGES AND PROJECTIONS.
3. BRACE WITH CONTINUOUS SEAM ПООСЫ 30-2, GOST 21931-76

A-A



KVD No: 63505

PLAT SAMPLE SHOULD BE APPROVED BY A H S P BEFORE BULK PRODUCTION

EST. WT. 0.092 Kg TO BE STAMPED OR MARKED WHERE INDICATED THUS # 1 LETTERS)

ALL SHARP EDGES AND CORNERS TO BE REMOVED UNLESS OTHERWISE STATED MACHINED CORNERS TO HAVE R OUT SIDE INSIDE EQUIVALENT CHAMFERS ARE PERMISSIBLE

DRW	<i>[Signature]</i>	MATERIAL	USED ON CB 329-05
CHKD	<i>[Signature]</i>		CB 329-05-1 (A)
TCD	<i>[Signature]</i>		
APPD	<i>[Signature]</i>	CONTROLLERATE OF QUALITY ASSURANCE(HEAVY VEHICLES)	
DATE	10-7-89	AVAD	
SCALE	1:1		TITLE
DIMENSIONS IN mm			FILTER SCREEN ASSY
TOLERANCE ON DIMS UNLESS OTHERWISE STATED IS: 2102-69			
ALL THREADS TO CONFORM TO		D S CAT NUMBER	DRAWING NUMBER
A	29.10.97	AUTHY LT.No.90215/AHSP/ED/AL ^{17.10.97}	CB 329-02-3
ISSUE	DATE	NATURE OF AMENDMENTS	



SIZE A3



