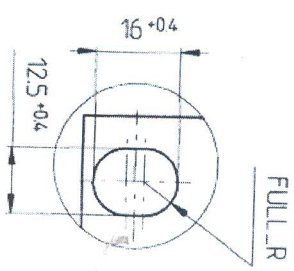


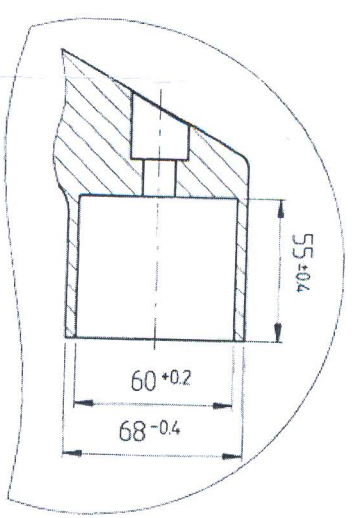
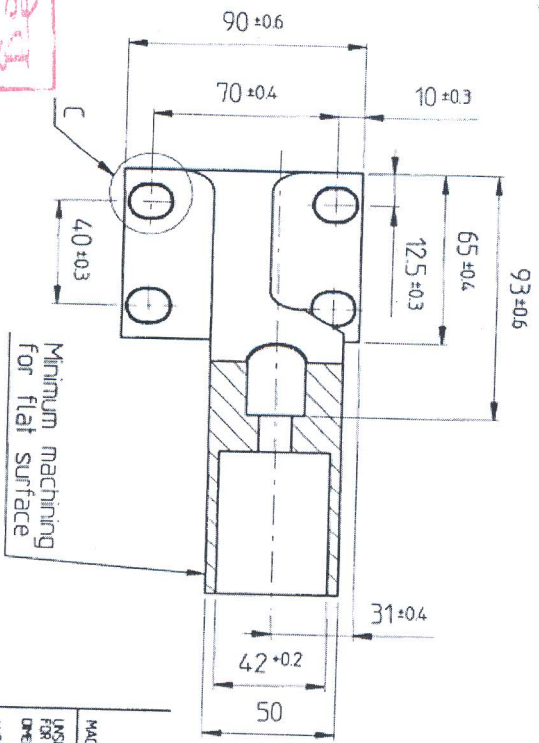
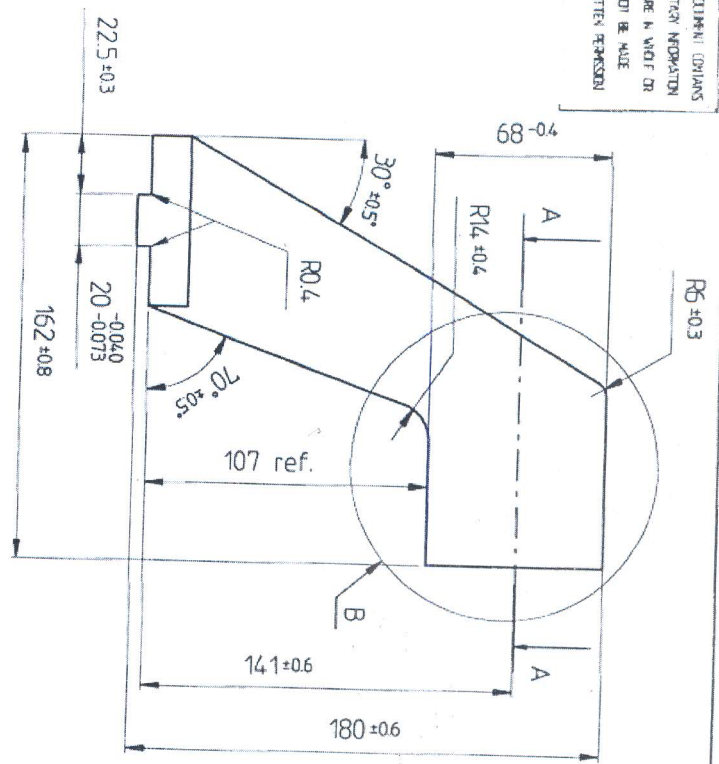
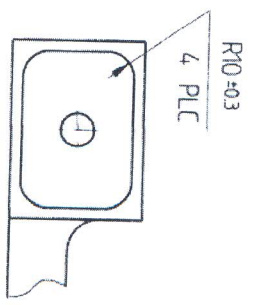
NOTE:

1. Chamfered 0.5x45°

THIS DRAWING/DOCUMENT CONTAINS
 COMPANY PROPRIETARY INFORMATION
 USE OR DISCLOSURE IN WHOLE OR
 IN PART SHALL NOT BE MADE
 WITHOUT THE WRITTEN PERMISSION
 OF OFB



DETAIL C
 SCALE 1:1



DETAIL B

केवला मिश्रा & सं
 386150
 23-04-2018

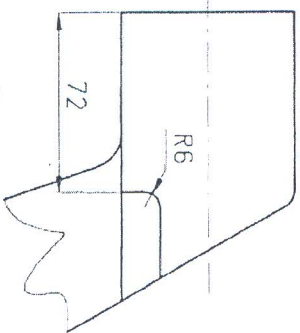
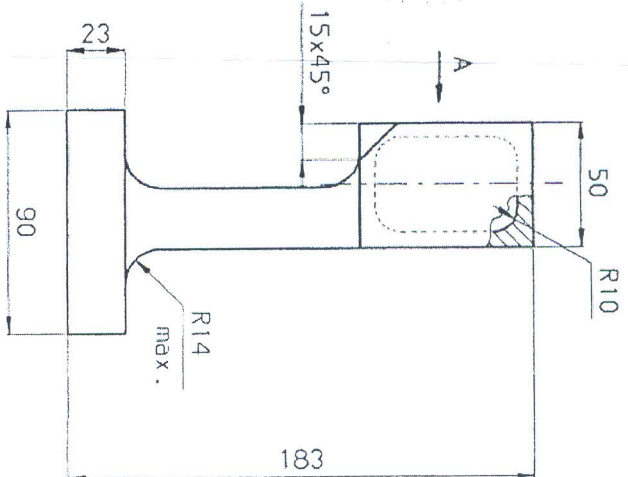
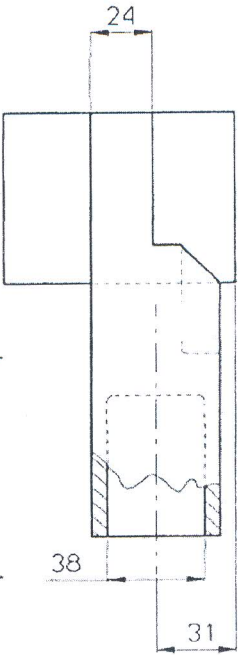
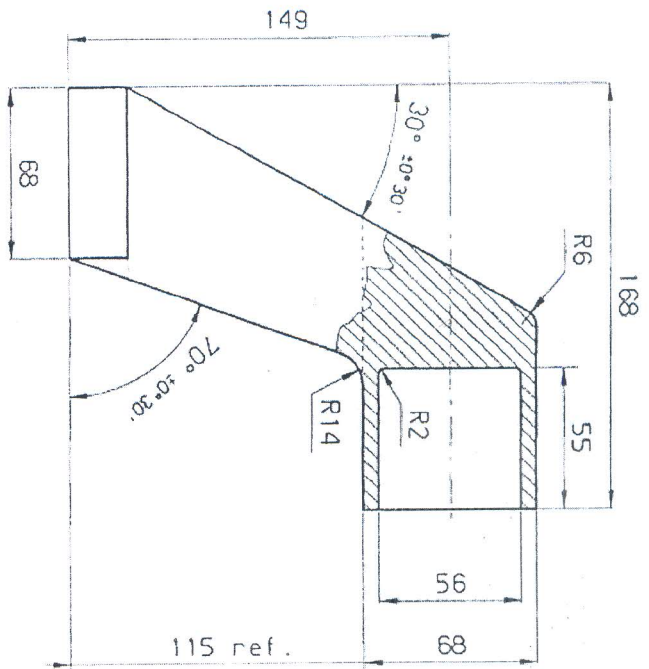
SECTION A-A

ID. No. 2128
 Location: 01/06/19

MACHINING INSTRUCTIONS UNSPECIFIED TOLERANCES FOR DIMENSIONS AND ANGLES		DATE: 01/01/2007	
HEAT TREATMENT		ALTERNATE/INDIGENOUS MATERIAL SPECN: IS:1030/1980 GDE 280-520 W (REF: CQA(W) JABALPUR L.No. JB2402/CQA/W/011 DN 12 JULY 2005)	
FINISH: PHOSPHATE COATING ACCORDING TO Q000-P-5232 TYPE M Q. Z		PART NO. SHARANG 130/155MM_UG_OFB_SLB	
MATERIAL: 176-8139-C		ASSEMBLY: 176-8001	
NAME: MOUNT		SCALE: 1:1	
PART NO. 176-8139		APPROVED: [Signature]	
ORGANIZATION: [Blank]		DATE: 199	
OFFICE: [Blank]		SCALE: 1:1	
APPROVED: [Signature]		DATE: 199	
ORGANIZATION: [Blank]		SCALE: 1:1	
OFFICE: [Blank]		DATE: 199	

NOTE:
1. Casting according to spec. 342 class C

Dimensions without tolerances		
from	to	tol.
	6	±0.10
	10	±0.12
	14	±0.15
	18	±0.20
	24	±0.25
	30	±0.30
	40	±0.37
	50	±0.44
	65	±0.52
	80	±0.60
	100	±0.68
	120	±0.76
	140	±0.84
	160	±0.92
	180	±1.02
	200	±1.12
	225	±1.28



For Trade Only.

VIEW A

केवळ निविदा हेतु
सर्व मागणी 380150
दिनांक 23-04-2018

MAKING INSTRUCTIONS	INSPECTED DIMENSIONS FOR DIMENSIONS AND ANGLES
HEAT TREATMENT	NORMALIZED
FINISH	
MATERIAL	CAST STEEL - GS-523 DIN1681

ITEM	DESCRIPTION	COMPONENT	NOOFF	MATERIAL	TREATMENT	REMARKS
SCALE	NTS					
UNSPECIFIED TOLERANCES	IS: 1302 (METHOD 3)					
DATE						
DRN.						
CHD.						
TCD.						
CDPN.						
DATE/ISSUED						
DATE/REVISED						
MOUNT CASTING						
DRG. NO.	176-8139-C					
FIELD	GAN FATORY					
APPROVED						
DRG. NO.	176-8139-C					
SHTS.	1					
SHT. NO.	1					