

7490302708, 4

2

DWG NO 031682A-00 SH 1

THIS DOCUMENT AND THE INFORMATION CONTAINED IN IT ARE PROPRIETARY AND CONFIDENTIAL TO OFT. NO PERSON OR ENTITY IS ALLOWED TO COPY, REPRINT, REPRODUCE OR PUBLISH ANY PART OF THIS DOCUMENT, NOR DISCLOSE ITS CONTENTS TO OTHERS, NOR MAKE ANY USE OF IT, NOR ALLOW OR ASSIST OTHERS TO MAKE ANY USE OF IT UNLESS BY THE PRIOR WRITTEN EXPRESS AUTHORIZATION OF OFT AND THEN ONLY TO THE EXTENT AUTHORIZED. COPYRIGHT-OFT.

GENERAL TOLERANCES (FREE SIZE TOLERANCES) PER DIN 7168-m							
LINEAR DEVIATION				ANGULAR DEVIATION			
0.5	6	30	120	UP TO	10	50	120
UP TO	UP TO	UP TO	UP TO	UP TO	UP TO	UP TO	UP TO
6	30	120	400	10	50	120	400
±0.1	±0.2	±0.3	±0.5	±1°	±30'	±20'	±10'

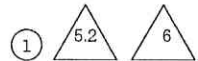
ABOVE 400 MM SEE SPEC DIN 7168-m

SHEET REV RECORD  
ALL SHEETS ARE THE SAME REVISION

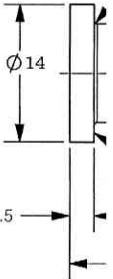
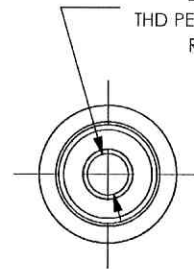
REV	ECO
01	
02	
03	
--	T00064 Identical

NOTES:

- INTERPRET THIS DRAWING IAW ASME Y14.100M.
- MATERIAL: ALUMINIUM ALLOY BAR 6061-T651 PER QQ-A-225/8. (EQUIVALENT ALUMINIUM IS PERMITTED AFTER ELBIT APPROVAL).
- DEBURR AND REMOVE SHARP EDGES APPROX. 0.3X45°.
- GENERAL TOLERANCES ACCORDING TO DIN 7168-m.
- FINISH:
  - ANODIC COATING PER MIL-A-8625, TYPE II, 0.015-0.025 MM THICK, CLASS 2, COLOR BLACK.
  - PROTECT SPECIFIED THREAD AGAINST ANODIC COATING.
  - CHROMATIC CONVERSION COATING PER MIL-DTL-5541 TYPE I CLASS 3.
- INSTALL INSERTS IN SPECIFIED HOLES AFTER FINISH PER SAE MA 1567 USING PRIMER EPOXY PER MIL-P-53022.
- QUALITY ASSURANCE PROVISIONS:
  - QUALITY ASSURANCE PROVISIONS FOR THIS ITEM PER RDMQD00012P.
- PACKAGING AND PACKING: THE FINISHED PART SHALL BE PRESERVED AND PACKAGED IN ACCORDANCE WITH COMMERCIAL PRACTICE.
- IDENTIFY PART PER MIL-STD-130 PARA 4.1.B, BY LABELLING ITS CONTAINER WITH THE PART NUMBER. CHARACTERS 3.2 MM HIGH.



M4X0.7 HELICAL COIL INSERT  
DRILL  $\nabla$ 7 MAX.  
THD PER SAE MA 1567 X 1D  
REMOVE TANG



UNCONTROLLED COPY  
IDENTIFIED CORRECT COPY  
OF APPROVED DRAWINGS  
AT THIS DATE 26.11.2020  
Design & Drawing Office  
Canton Factory



WEIGHT: 0.002 Kg

UNLESS OTHERWISE SPECIFIED		SIGNATURE	DATE
DIMENSIONS ARE IN MM PER ASME Y14.5M -1994		DRAWN	1/9/20
TOLERANCES LINEAR      ANGULAR		CHECKED	
SEE NOTE 4	SEE NOTE 4	HOS/DDO	3/9/20
1ST. ANGLE PROJECTION		OFFICER/PRODN	
SURFACE TEXTURE IN MICRO M		OFFICER/QC	
PROJECT OFFICER		OFFICER/DDO	

2

PLM Control

OFT

ASSEMBLY PARTS LIST

Assembly Parts List For: 031682A-00  
Status: Released

Rev: -  
Description: INSERT M4, ALTERED ITEM

FN	CMD	PART NUM	ECO	DESCRIPTION	MB	QTY	UIM	REF. DES./REMAR
1	HM	99662215M		INSERT HCOIL CRES M 4X1D	P	1	Each	

UNCONTROLLED COPY  
CERTIFIED CORRECT COPY  
OF APPROVED DRAWINGS  
AT THIS DATE ..26.11.2020

*th*  
Design & Drawing Office  
Ordnance Factory  
The Vale, Warrington, Cheshire