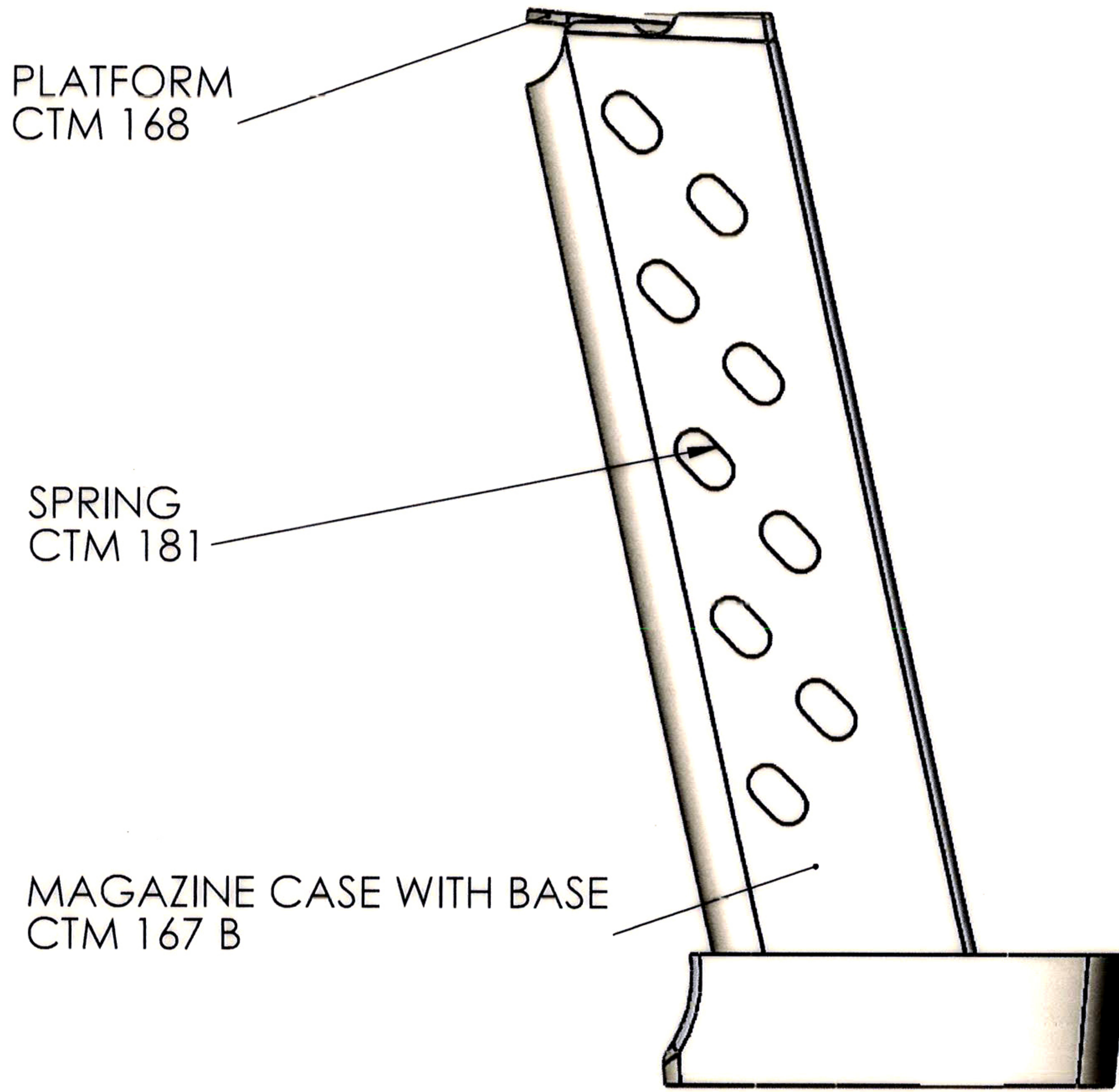


DRG. NO: CTM-158 C

Provisional

ALL DIMNS. ARE IN mm.  
UNTOL DIMNS. ARE AS PER IS:2102.

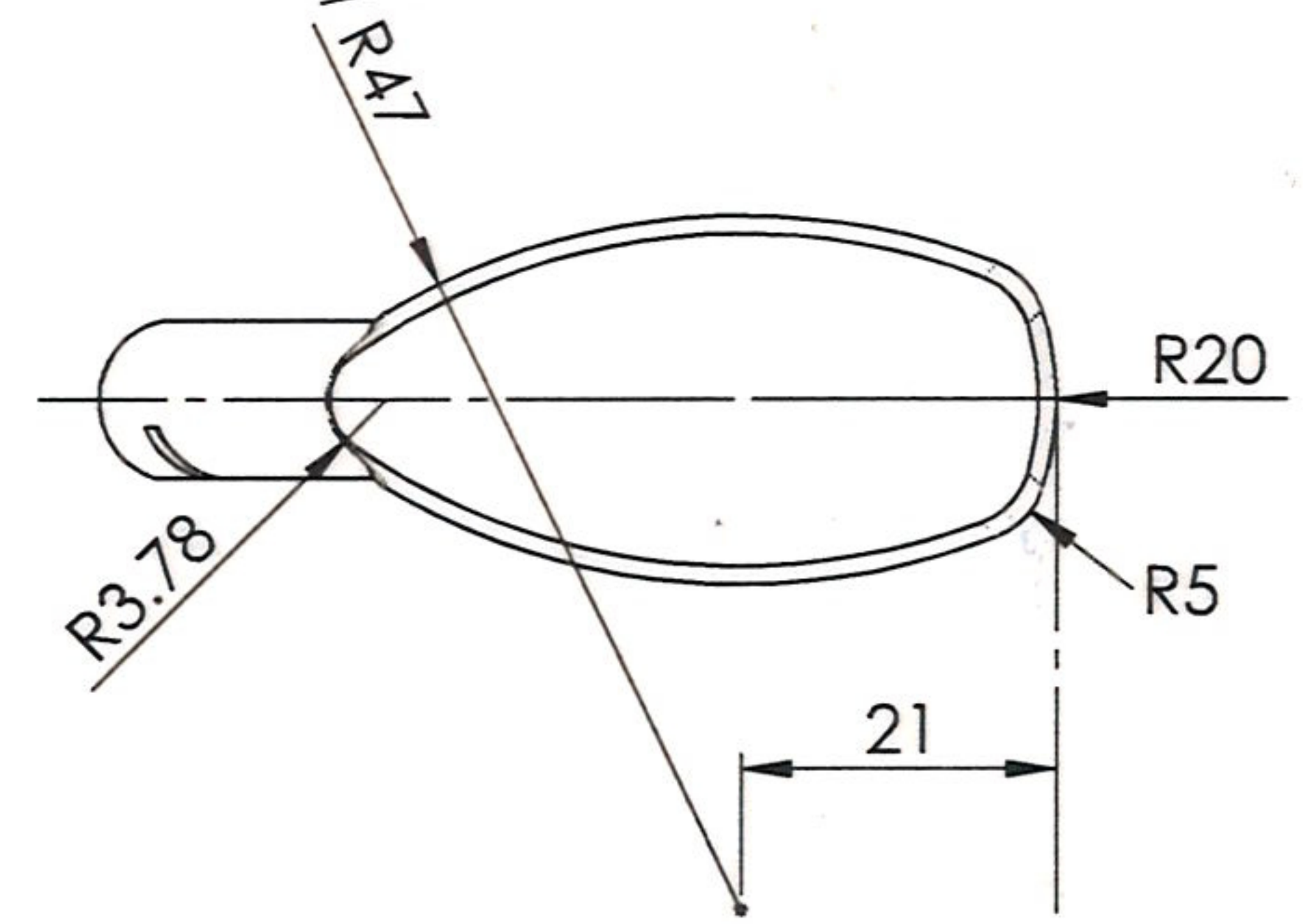
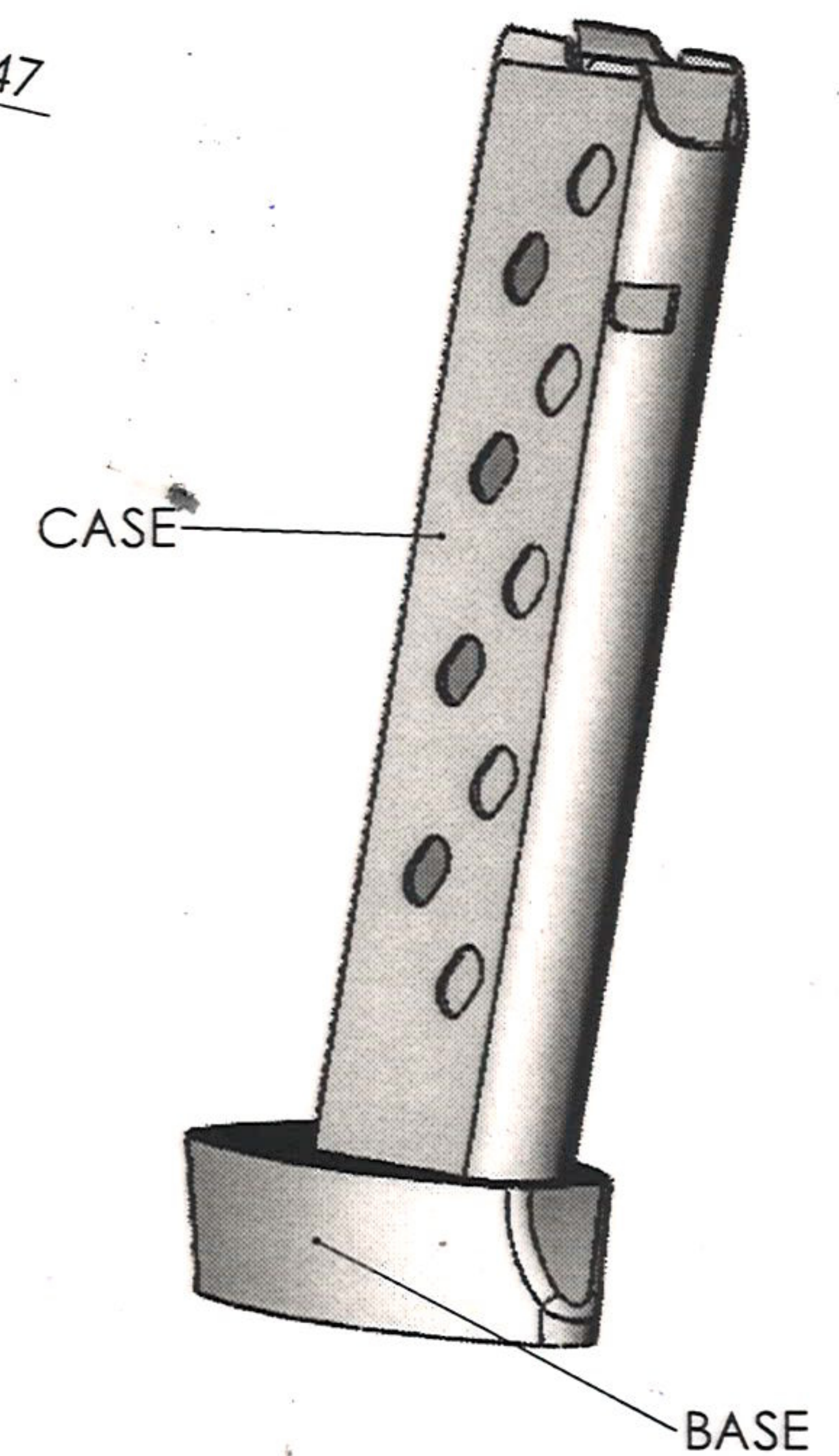
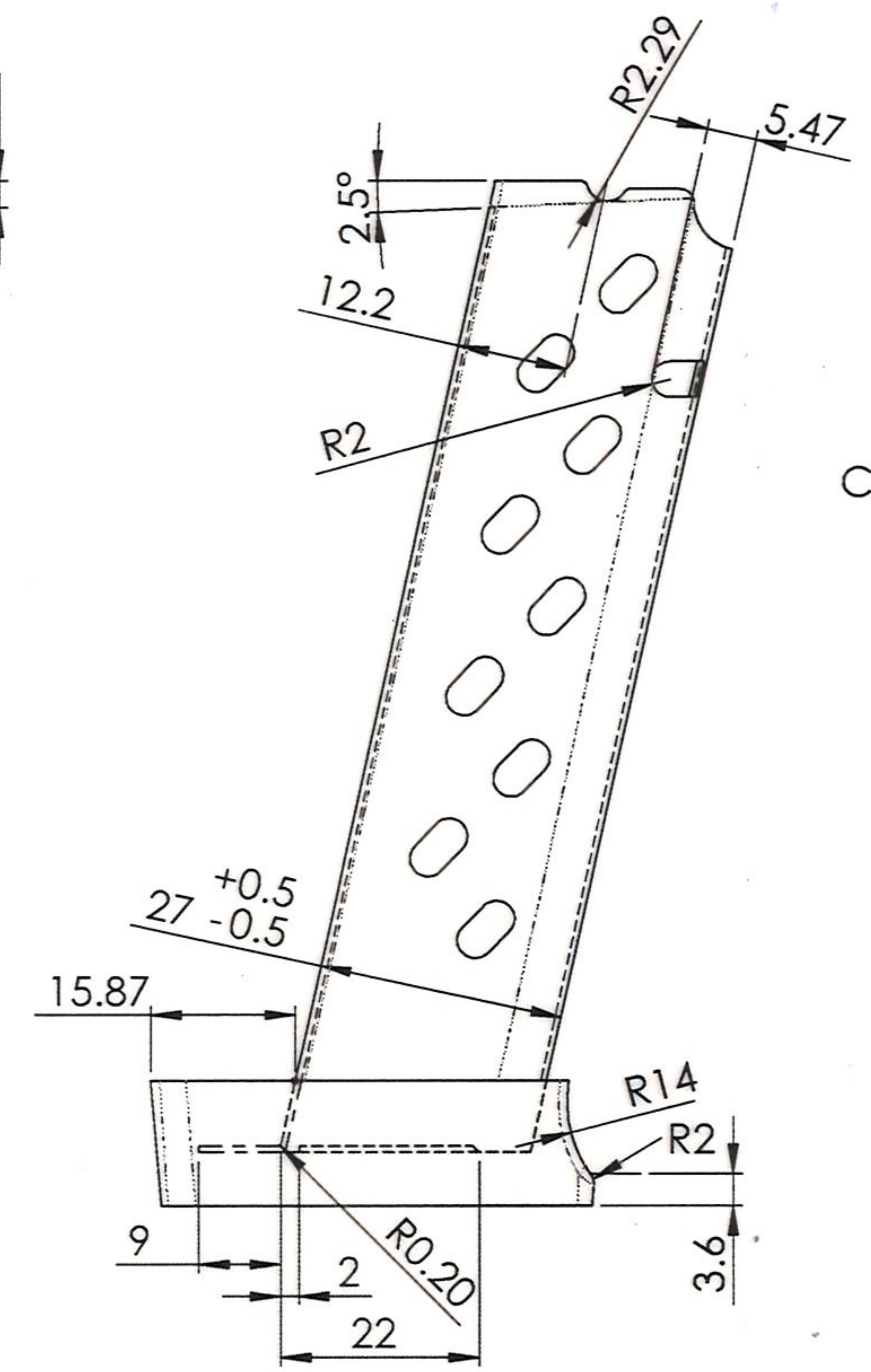
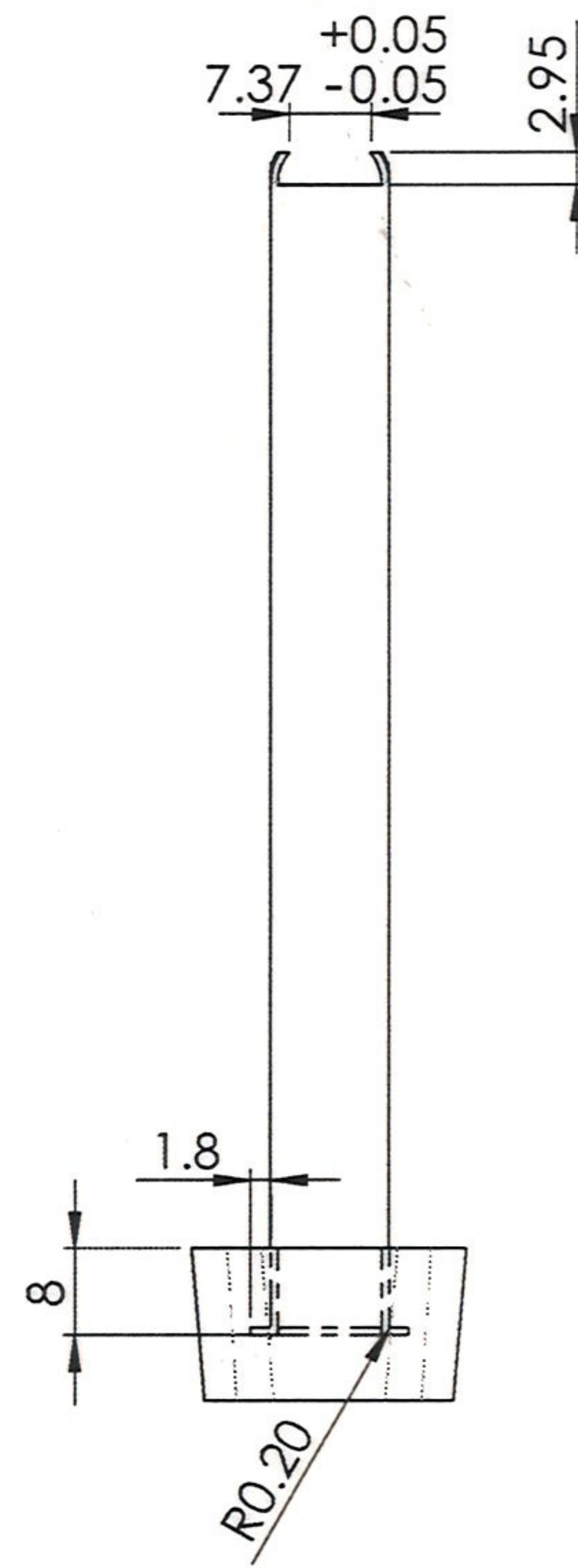
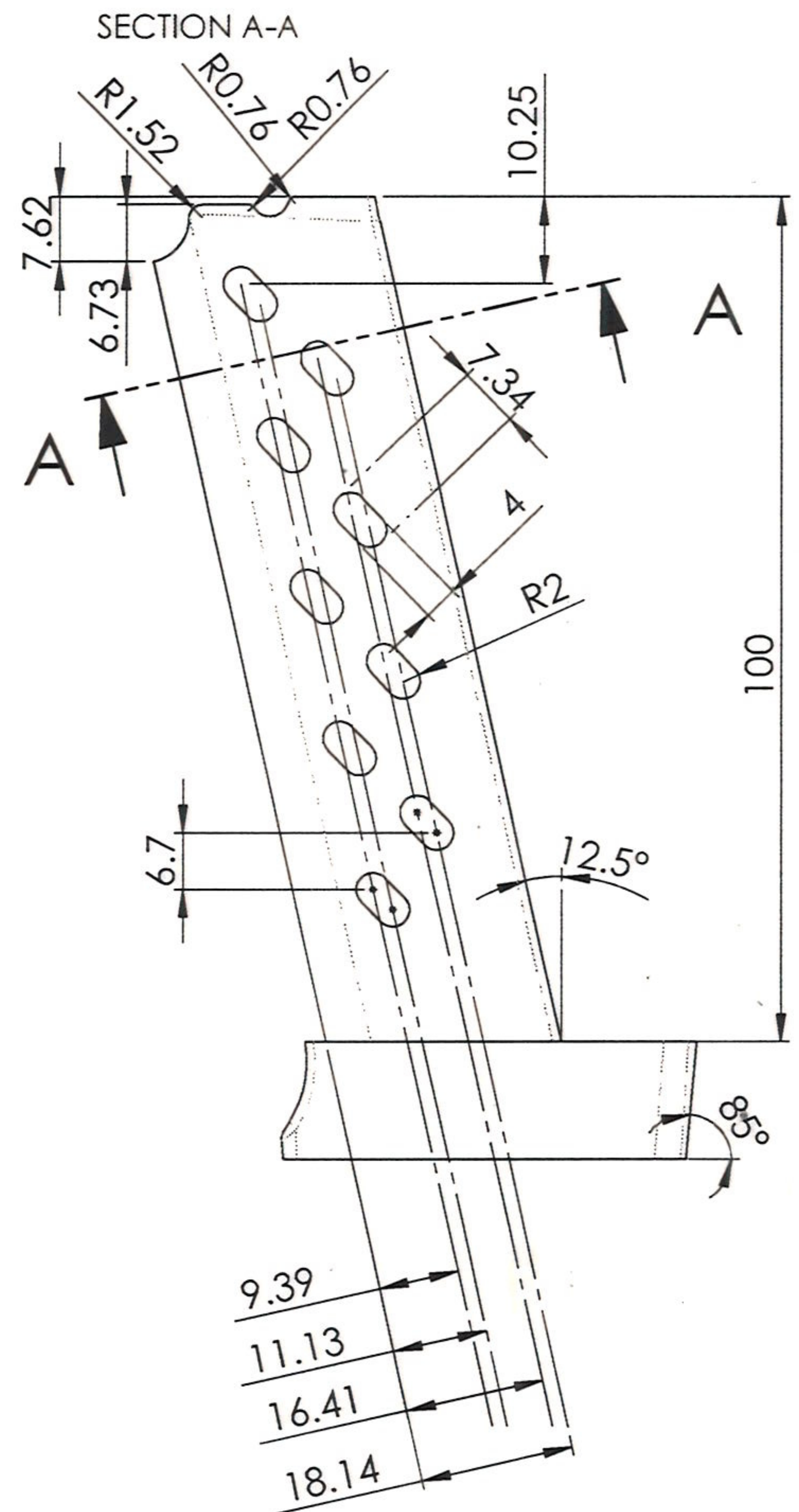
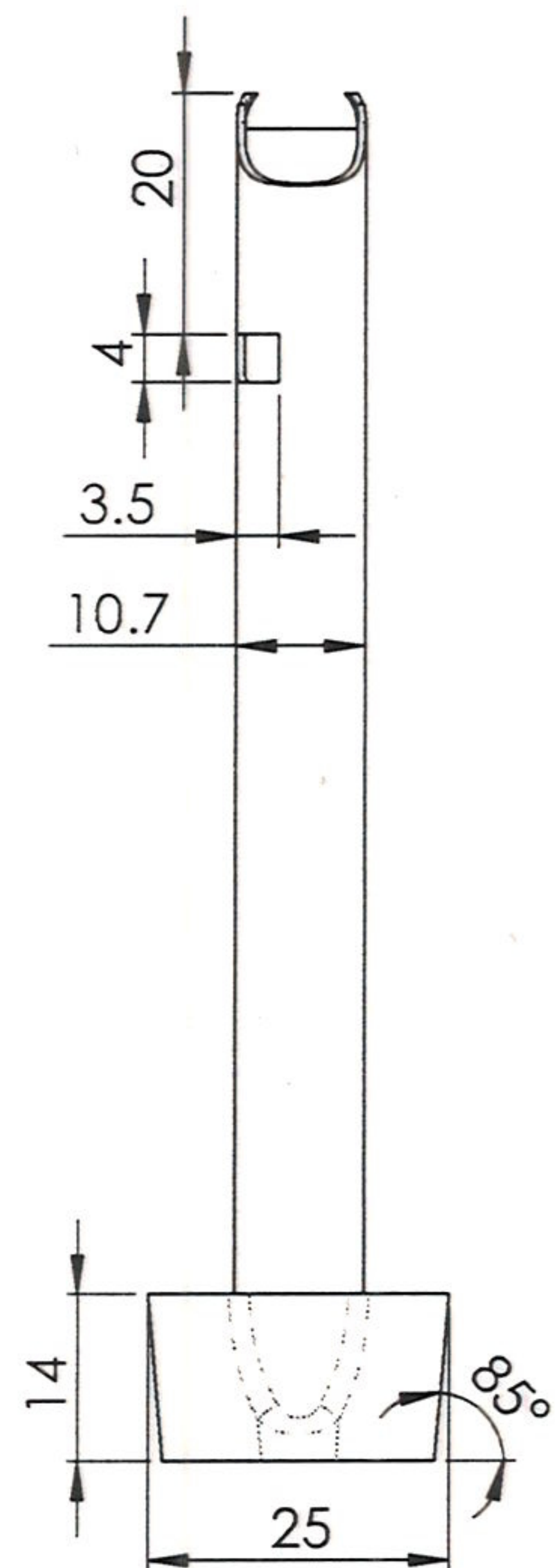


29/10/21	DA NO 65/21 DT-29.10.21	SCALE: NTS	PROJECTION: THIRD ANGLE	COMPONENT- PISTOL ASHANI MK-III	STORE DRG. NO
	DA NO 33/21 DT-05.08.21	DRAWN BY:  29/10/21		<b>MAGAZINE ASSY</b>	
	DA NO- 29/21 DT-24/07/21	CHECKED BY:		<b>DRG. NO: CTM-158 C</b>	
		APPROVED BY:  29/10/21			
DT & SIGN.	DESCRIPTION	CONCURRED BY: JWM/PISTOL		NO. OF SHEETS : 1	
AMENDMENTS		SIGN & DATE		GSF Cossipore	
				SHEET NO: 1	

DRG. NO. CTM-167 B

PROVISIONAL

ALL DIMNS. ARE IN mm.  
UNTOL DIMNS. ARE AS PER IS:2102.



MATERIAL:- (1) FOR CASE- BS 1449:1955, EN 2A OR 2B  
(2) FOR BASE- POLYCARBONATE (BLACK COLOUR)

HARDNESS:- 250-30 VPV

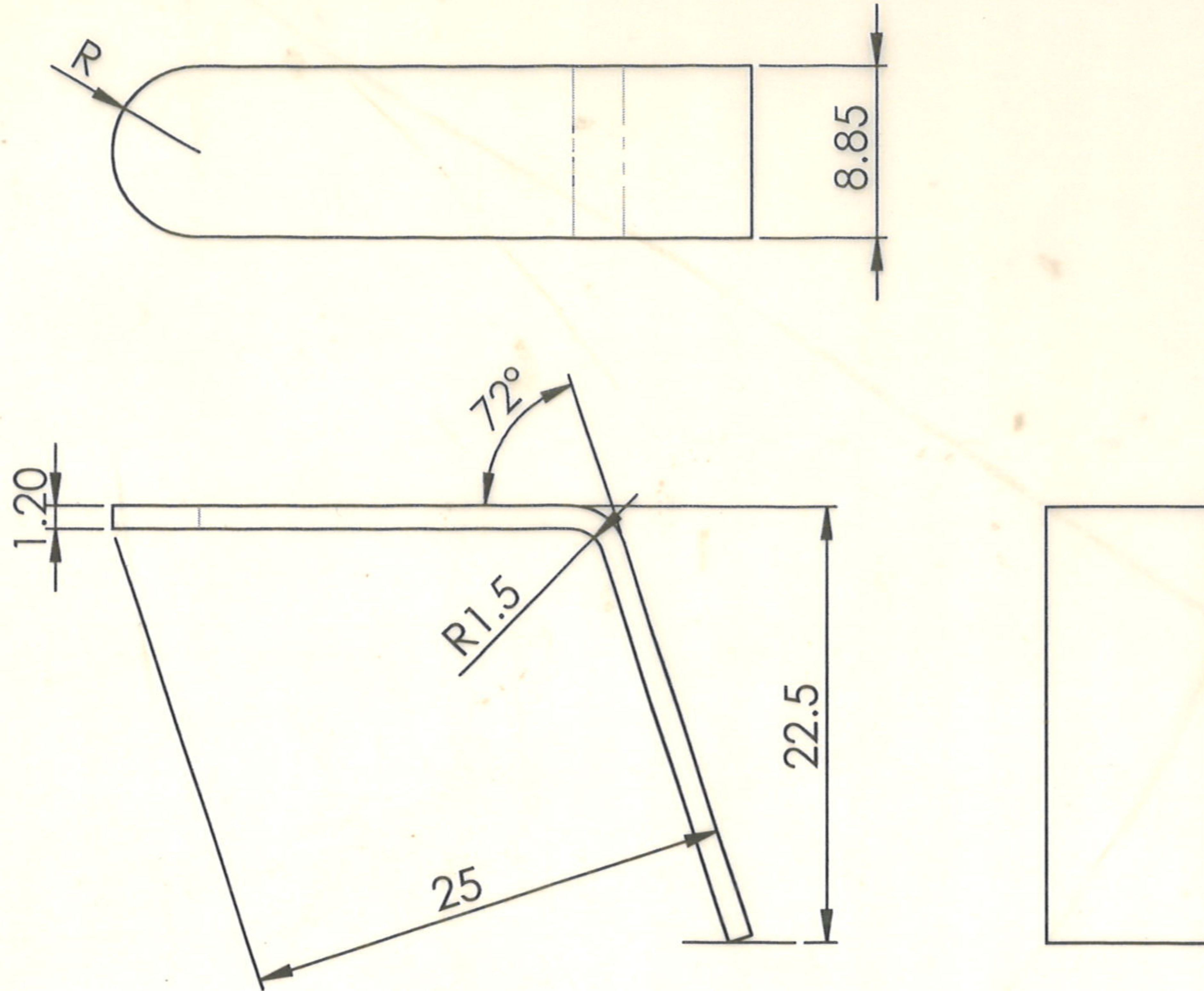
NOTE:- BASE SHOULD BE MOLDED WITH THE CASE INSURING DIMENSIONS AND RIGIDITY.

		SCALE:	PROJECTION: THIRD ANGLE	COMPONENT MAGAZINE ASSY FOR ASHANI MK-III	STORE DRG. NO CTM-158 C
		DRAWN BY: <i>[Signature]</i>		<b>MAGAZINE CASE WITH BASE</b>	
		CHECKED BY:			
		APPROVED BY:			
		CONCURRED BY: JWM/PISTOL		<b>DRG. NO. CTM-167 B</b>	
DT. & SG.	DESCRIPTION	DATE:	SIGN: <i>[Signature]</i>	M/C- GSF COSSIPORE	NO. OF SHTS: 1 SHT. NO: 1
AMENDMENTS					

DRG. NO: CTM -168

PROVISIONAL

ALL DIMNS. ARE IN mm.  
UNTOL DIMNS. ARE AS PER IS:2102.



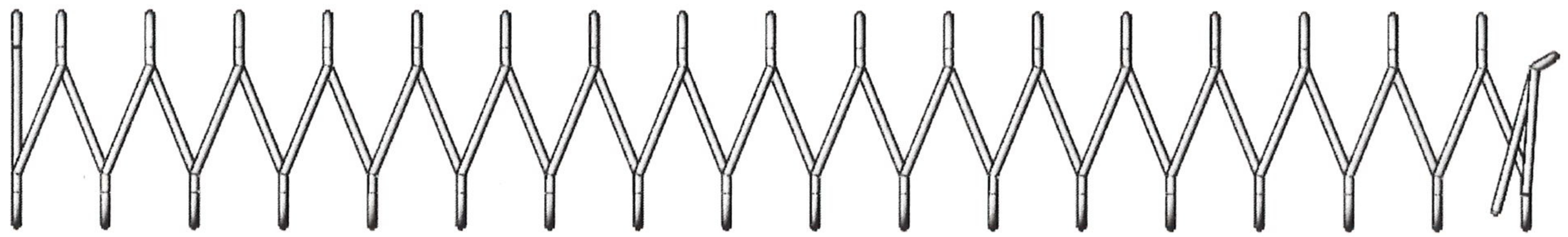
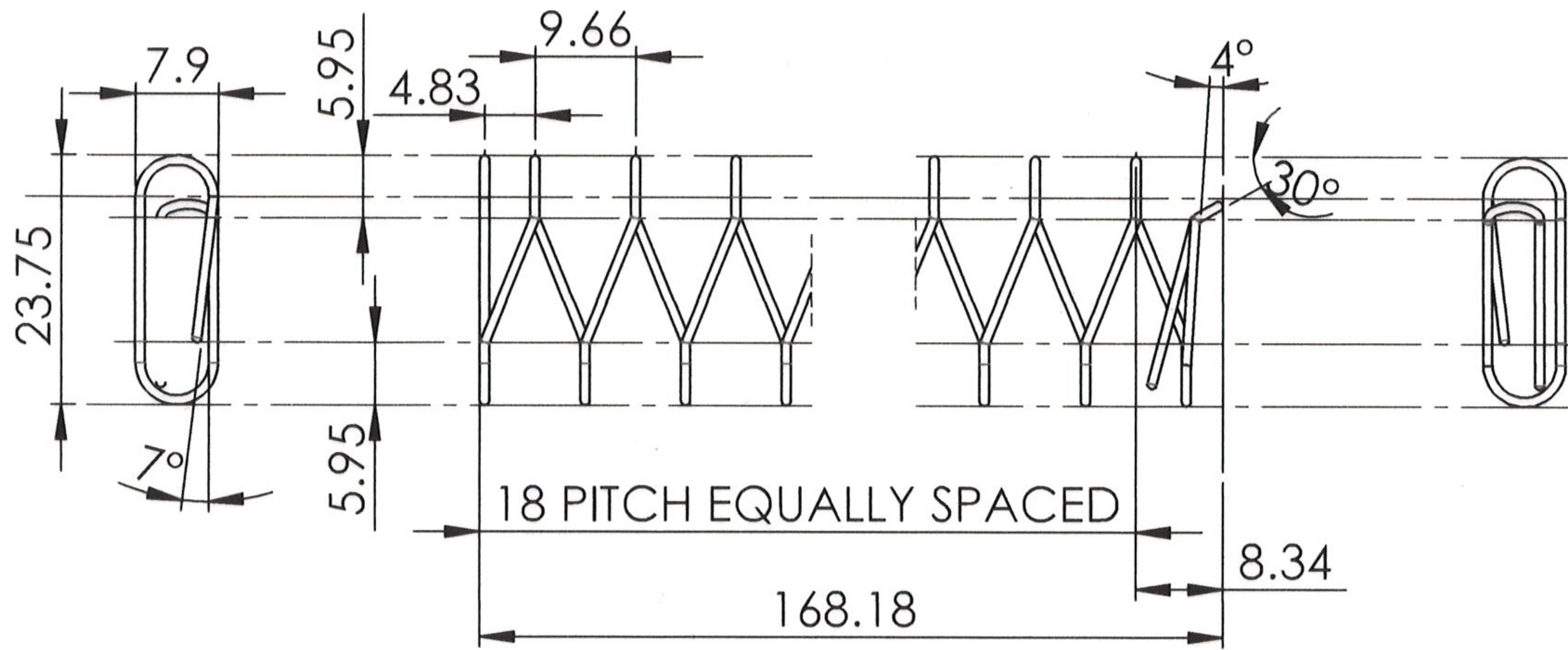
MATL: BS 1449 1955, EN 2A OR 2B

		SCALE- 2:1	PROJECTION: THIRD ANGLE	COMPONENT- MAGAZINE ASSY. ASHANI MK-III	STORE DRG.NO. CTM-158
		DRAWN BY : Shailesh kumar		PLATFORM	
		CHECKED BY: <i>SA</i> 22.10.19			
		APPROVED BY: <i>MW</i> 22/10/19			
DT & SIGN.	DESCRIPTION	CONCURRED BY: JWM/PISTOL		DRG. NO: CTM -168	NO. OF SHEETS : 1
AMENDMENTS		SIGN & DT: <i>SA</i> 21/10/19		GSF COSSIPORE	SHEET NO: 1

DRG. NO: CTM-181

PROVISIONAL

ALL DIMNS. ARE IN mm.  
UNTOL DIMNS. ARE AS PER IS:2102.



MODEL VIEW

COIL TYPE - LEFT HAND WOUND  
TOTAL NO. OF COIL - 18  
FREE LENGTH - 168.18 mm  
WIRE DIA. - 0.9 mm +/- 0.015

MATERIAL:- BS 5216 , 1991 CODE-NS, GRADE-3

		SCALE - 1:1	PROJECTION: THIRD ANGLE	COMPONENT- MAGAZINE ASSY ASHANI MK-III	STORE DRG.NO CTM-158
		DRAWN BY: <i>[Signature]</i>		<b>SPRING MAGAZINE</b>	
		CHECKED BY:		<b>DRG. NO: CTM-181</b>	
APPROVED BY: <i>[Signature]</i>					
DT & SIGN.	DESCRIPTION	CONCURRED BY: JWM/PISTOL		NO. OF SHEETS : 1	
AMENDMENTS		SIGN & DT:	<i>[Signature]</i>	GSF Cossipore	SHEET NO: 1