

169100-5001

D.S. CAT. No.

L8026 DIA
H8103

DIMENSARE INMM

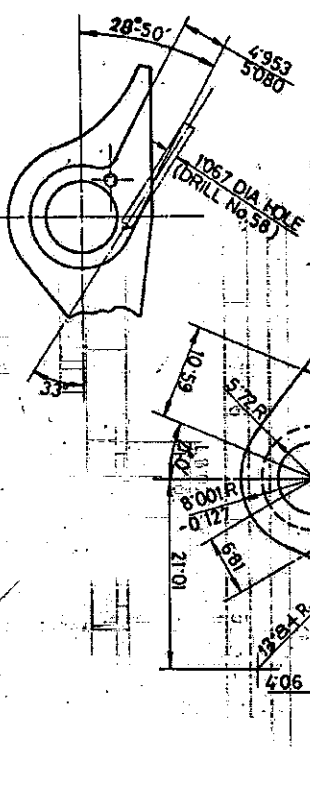
FOR EXPLANATION OF DETAILS WHEREVER NOT SPECIFIED REFER TO NOTE SHEET NO.30(A)EST-I (ISSUE I)

UN CONTROLLED COPY

NOTE :-

- ACCEPTANCE STANDARDS FOR MACRO ETCH TEST AND MICROSCOPIC DETERMINATION OF NON METALLIC INCLUSIONS FOR STEEL.
- 1) MACRO ETCH TEST AS PER ASTM 381 WITH ACCEPTANCE STANDARD AS C2 R2 S2
- 2) NMIR TEST AS PER IS:4163-82.

HARDNESS :-
CASE CARBURISE TO A DEPTH OF 0.75 APPROX.
575-650 HV (65-69 HRD)



PART VIEW SHOWING SEATING FOR LONGER ARM OF SPRING

CERTIFIED CORRECT COPY OF APPROVED DRAWINGS AT THIS DATE 08.08.17...

Design & Drawing Office
Ordnance Factory,
Tiruchirappalli-620018

METRIC

22816-10195	NEG/RETRACED AND DRG. RE-SEALED.	21980-SA & 22453-SA.	DC	15037-SA	DT. 15.2.77	BRIF. REC'D	CD	GO	SIGN
AUTHY DATE	21980-SA & 22453-SA.	BRIF. REC'D	CD	GO	SIGN				
SEALED	DC 15037-SA	DT. 15.2.77	CD	GO	SIGN				
NOMENCLATURE	SEAR SAFETY								
DGN	DRN	CHD	TRD	SKP	COMP	A&Q	ASSY	SCALE	1005-001696
APPROVED	10.08.17	10.08.17	DCL				SCALE	ARDE 657729	
MATERIAL	NEG RETRACED	EST MASS					REF.	DET	SHS/SHT
H1/HARDNESS	AS ABOVE						DRG NO./		
SURFACE FINISH	PHOSPHATE TO SPECN. J55 04.65-01:						PART NO.		
PROTECTIVE FINISH	1988 CLASS 1, OIL FINISH.						A H S P		
							D.S. CAT. No.		1005-001697