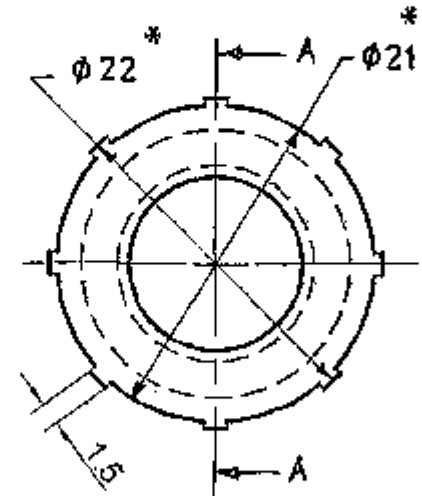
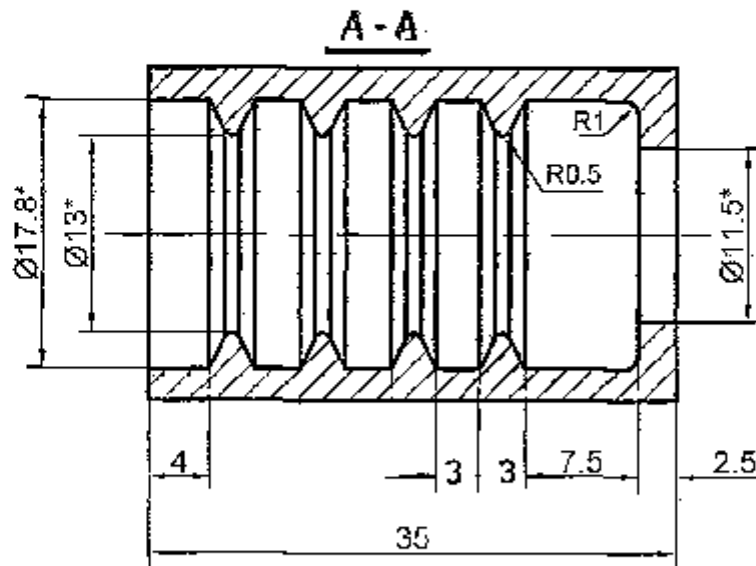


DRAWING NUMBER
CQA(HV)507714E



1. * DIMENSIONS AFTER ASSY.
2. COATING :- Cd9, CHROMATIZING AS PER INSTRUCTION I.I.I.104 WITH ELIMINATION OF HYDROGEN EMBRITTLEMENT.

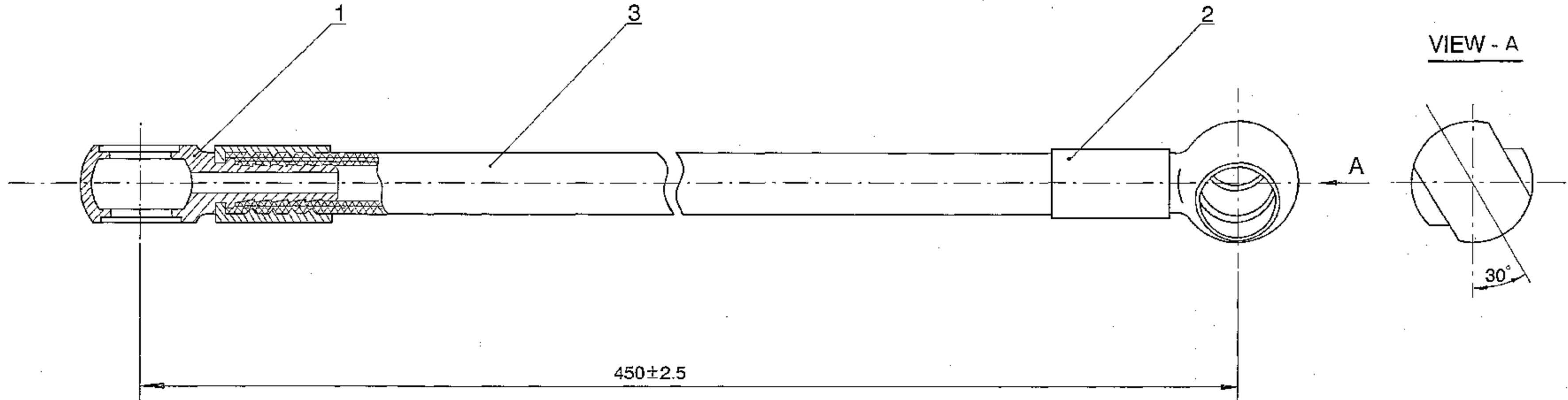
PILOT SAMPLE SHOULD BE APPROVED BY A H S P BEFORE BULK PRODUCTION.

		EST. WT.	TO BE STAMPED OR MARKED WHERE INDICATED THUS # (LETTERS)
		ALL SHARP EDGES AND CORNERS TO BE REMOVED UNLESS OTHERWISE STATED MACHINED CORNERS TO HAVE R - OUT-SIDE R - INSIDE EQUIVALENT CHAMFERS ARE PERMISSIBLE.	
		MATERIAL :- STEEL 220M07 (EN-1A) TO BS:970 PT I-1983	USED ON :- CQA(HV)507712E
ISSUE DATE	NATURE OF AMENDMENTS	CONTROLLERATE OF QUALITY ASSURANCE (HEAVY VEHICLES) AVADI	
DRN	SCALE :- 2 : 1		
CHD	DIMENSIONS IN mm		
TCD	TOLERANCE ON DIMENSIONS UNLESS OTHERWISE STATED IS : 2102 - 69	TITLE :- COUPLING	
APPD DATE 29-11-08	ALL THREADS TO CONFORM TO	D S CAT NUMBER	DRAWING NUMBER CQA(HV)507714E
SIZE A4			



DRAWING NUMBER
CQA(HV)507729E

SHEET No. 1 OF 1



1. END CONNECTION SHALL BE FIXED WITH HOSE BY CRIMPING SUITING TO HOSE AND END CONNECTION REQUIREMENT.
2. DURING ASSEMBLY OF HOSE END PIECES, INNER SURFACES OF COUPLINGS AND MANDREL OF FIXTURE SHOULD BE ABUNDANTLY LUBRICATED WITH OIL USED FOR FILLING-UP ARTICLE OIL SYSTEM.
3. BEFORE CRIMPING THE ACCESSORIES IN THE HOSE, IT IS NECESSARY TO STRAIGHTEN THE HOSE ENDS WITH MANDREL.
4. TO BE PRESSURE TESTED WITH DIESEL FUEL AT A PRESSURE 1.5 MPa (15 Kgf/cm²) FOR TWO MINUTES. DIESEL FUEL SHOULD BE DRAINED; INNER AND OUTER SURFACES OF HOSE SHOULD BE BLOWN WITH COMPRESSED AIR.
5. *DIMENSIONS FOR REFERENCE.

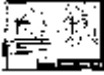
PILOT SAMPLE SHOULD BE APPROVED BY A H S P BEFORE BULK PRODUCTION.

EST. WT. (Kg)	TO BE STAMPED OR MARKED WHERE INDICATED THUS # (LETTERS)
---------------	---

ALL SHARP EDGES AND CORNERS TO BE REMOVED UNLESS OTHERWISE STATED MACHINED CORNERS TO HAVE R OUT-SIDE R INSIDE EQUIVALENT CHAMFERS ARE PERMISSIBLE.

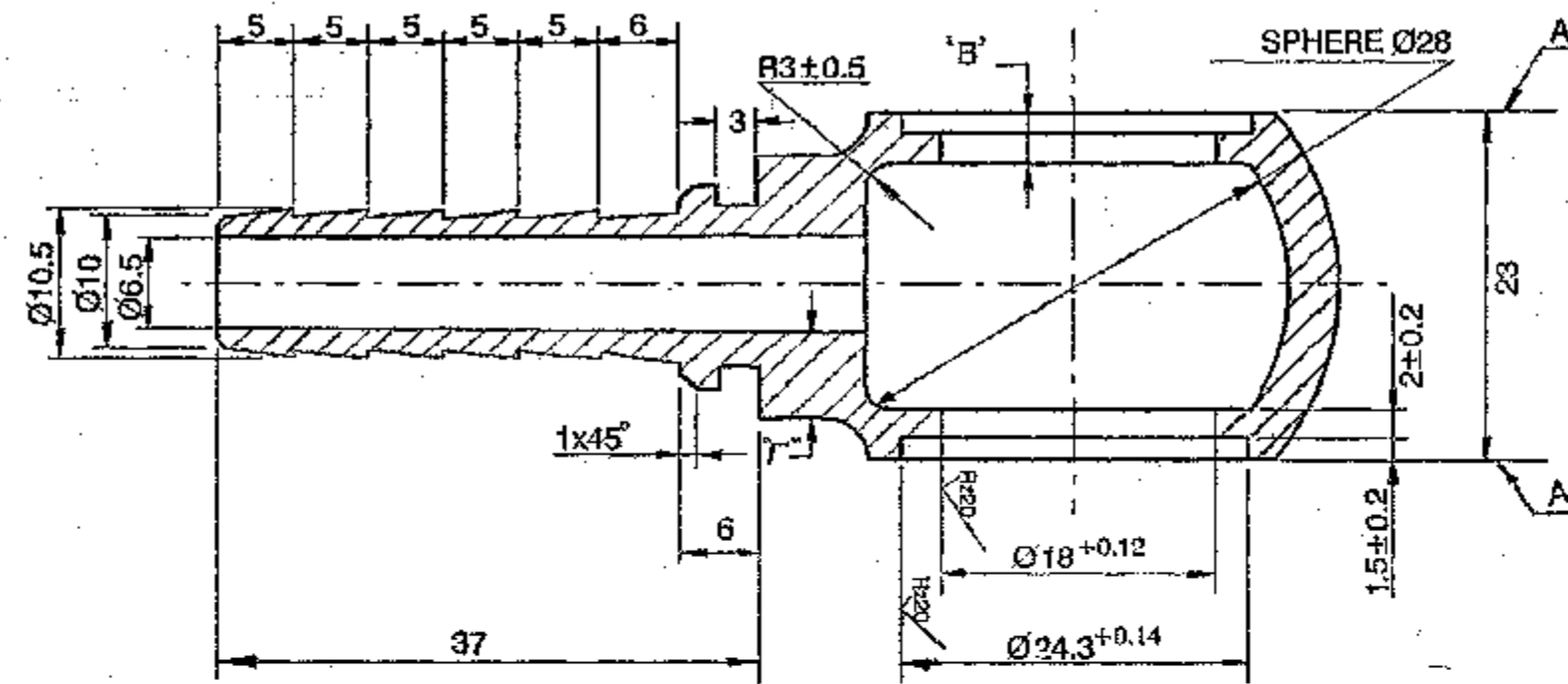
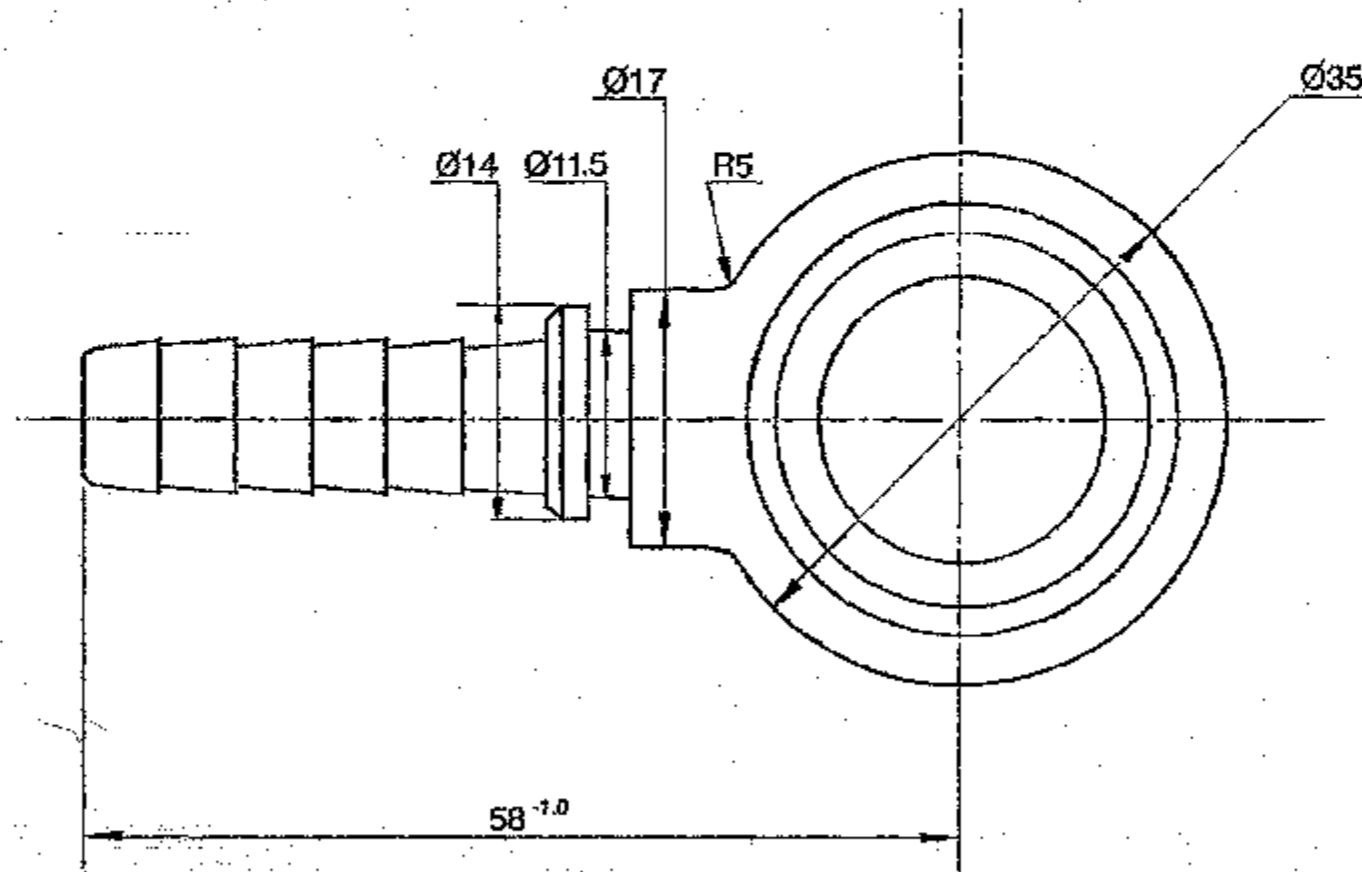
DRN	AP	MATERIAL:-	USED ON:- Cb 20-35-00-5
CHD	br		Cb 20-27-00-4
APPD	AP	CONTROLLERATE OF QUALITY ASSURANCE (HEAVY VEHICLES) AVADI	
DATE	24.02.09		
SCALE:-	1:1	TITLE:-	FLEXIBLE HOSE
DIMENSIONS IN mm			
TOLERANCE ON DIMENS UNLESS OTHERWISE STATED IS: 2102-69		D S CAT NUMBER	DRAWING NUMBER CQA(HV)507729E
ALL THREADS TO CONFORM TO IS: 4218, PART-4.			
ISSUE	DATE	NATURE OF AMENDMENTS	

DRAWING SUPERSEDES Cb 20-35-70-5
AUTHY:- 1st Alteration Committee Meeting
Minutes Point No.1 Dt. 29.9.2004



DRAWING NUMBER
CQA(HV)507730E

SHEET No. 1 OF 1



- NON-PARALLELISM OF SURFACE "A" SHOULD NOT EXCEED 0.1mm.
- VARIATION IN THICKNESS OF WALLS "B" & "T" SHOULD NOT EXCEED 0.5mm.
- MISALIGNMENT AND SKEWNESS OF SHANK AXIS RELATIVE TO SURFACE "A" SHOULD NOT EXCEED 0.5mm ON A LENGTH OF THE SHANK.
- CRACKS, BURRS, NOTCHES, DENTS AND OTHER MECHANICAL DAMAGE ARE NOT ALLOWED.
- COATING Cd9, CHROMATIZING AS PER INSTRUCTION U.U.A-109 WITH ELIMINATION OF HYDROGEN EMBRITTEMENT.

PILOT SAMPLE SHOULD BE APPROVED BY A H S P BEFORE BULK PRODUCTION.

EST. WT. (Kg) TO BE STAMPED OR MARKED WHERE INDICATED THUS # (LETTERS)

ALL SHARP EDGES AND CORNERS TO BE REMOVED UNLESS OTHERWISE STATED MACHINED CORNERS TO HAVE R OUTSIDE R INSIDE EQUIVALENT CHAMFERS ARE PERMISSIBLE.

DRN	CHD	MATERIAL :-	USED ON :-
APPD	DATE	STEEL 220M07 (EN-1A) TO BS: 270 PT1-1983	CQA(HV)507729E
SCALE:- 2 : 1	CONTROLLERATE OF QUALITY ASSURANCE (HEAVY VEHICLES) AVADI		
DIMENSIONS IN mm	TITLE :-		
TOLERANCE ON DIMNS UNLESS OTHERWISE STATED IS : 2102 - 69	SWIVEL ELBOW		
ALL THREADS TO CONFORM TO IS : 4218, PART 4.	D S CAT NUMBER	DRAWING NUMBER	
ISSUE	DATE	CQA(HV)507730E	
NATURE OF AMENDMENTS			



