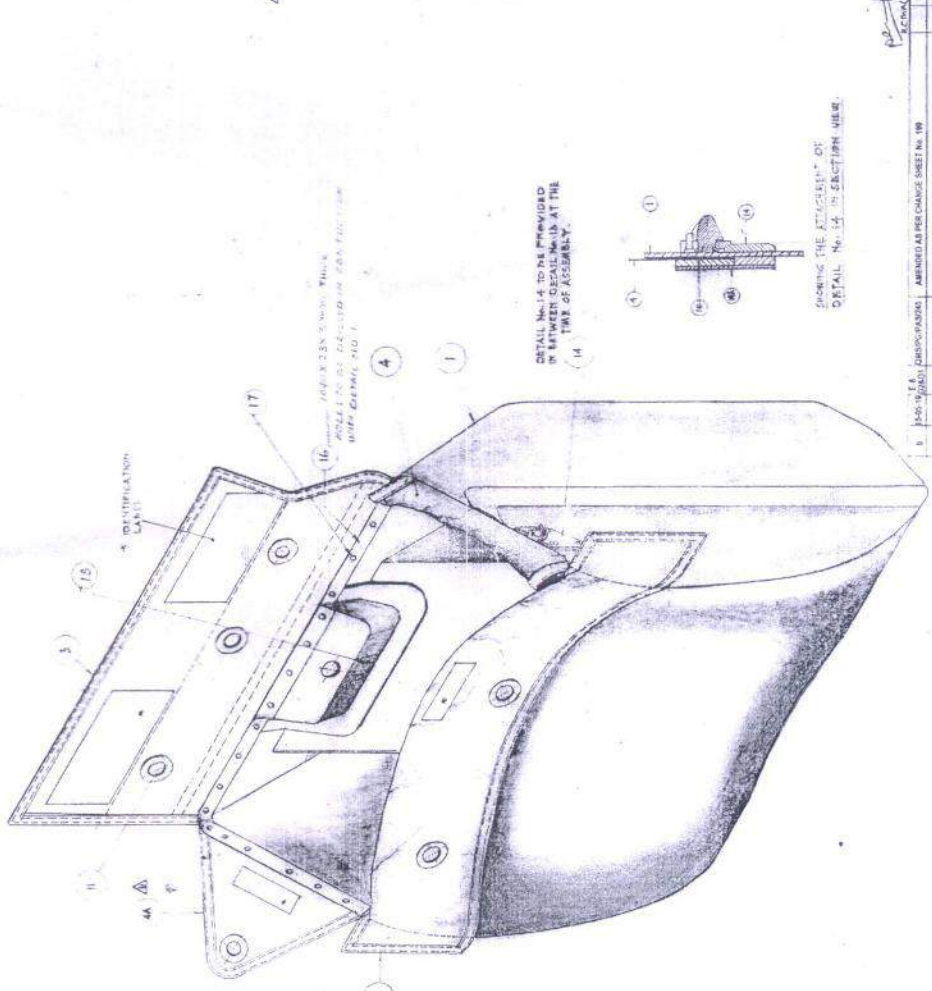


SHEET 2 OF 25

ITEM	DESCRIPTION	QUANTITY	UNIT	REMARKS
12	MATERIALS			
17	MATERIALS			
16	MATERIALS			
15-19A	33.75			
14	BASE PLATE, CONE, BUT FOR CONE	1	PC	1/2 21
13	PLATE WITH BRACING CONE	1	PC	
12	SUPPORTING PAD	1	PC	
11	CONE	1	PC	
10	GEARBOX WITH WASHER, 10 NOS.	10	PC	
9	GEARBOX WITH WASHER, 10 NOS.	10	PC	
8	LOGA NUT	10	PC	
7	NUTS	10	PC	
6	LAP WELDING	1	PC	
5	INSIDE FLAP, B	1	PC	
4	GREEN PLATE	1	PC	
3	INSIDE FLAP, A	1	PC	
2	TOP FLAP	1	PC	
1	PLASTIC TAP	1	PC	
1	FRONT FLAP, B	1	PC	
1	FRONT FLAP, A	1	PC	
1	LOWER PORTION (CONTAINER)	1	PC	
1	DIAPER PORTION (CONTAINER)	1	PC	
1	CONTAINER	1	PC	
1	ASSEMBLY HARDWARE MARK WILL BE SHOWN FOR	1	PC	

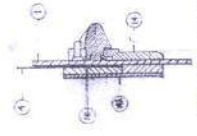
DETAIL No.	SHEET No.	NO. OF SHEETS	NO. OF PARTS
1	1	1	1
2	1	1	1
3	1	1	1
4	1	1	1
5	1	1	1
6	1	1	1
7	1	1	1
8	1	1	1
9	1	1	1
10	1	1	1
11	1	1	1
12	1	1	1
13	1	1	1
14	1	1	1
15	1	1	1
16	1	1	1
17	1	1	1
18	1	1	1
19	1	1	1
20	1	1	1
21	1	1	1
22	1	1	1
23	1	1	1
24	1	1	1
25	1	1	1
26	1	1	1
27	1	1	1
28	1	1	1
29	1	1	1
30	1	1	1
31	1	1	1
32	1	1	1
33	1	1	1
34	1	1	1
35	1	1	1
36	1	1	1
37	1	1	1
38	1	1	1
39	1	1	1
40	1	1	1
41	1	1	1
42	1	1	1
43	1	1	1
44	1	1	1
45	1	1	1
46	1	1	1
47	1	1	1
48	1	1	1
49	1	1	1
50	1	1	1
51	1	1	1
52	1	1	1
53	1	1	1
54	1	1	1
55	1	1	1
56	1	1	1
57	1	1	1
58	1	1	1
59	1	1	1
60	1	1	1
61	1	1	1
62	1	1	1
63	1	1	1
64	1	1	1
65	1	1	1
66	1	1	1
67	1	1	1
68	1	1	1
69	1	1	1
70	1	1	1
71	1	1	1
72	1	1	1
73	1	1	1
74	1	1	1
75	1	1	1
76	1	1	1
77	1	1	1
78	1	1	1
79	1	1	1
80	1	1	1
81	1	1	1
82	1	1	1
83	1	1	1
84	1	1	1
85	1	1	1
86	1	1	1
87	1	1	1
88	1	1	1
89	1	1	1
90	1	1	1
91	1	1	1
92	1	1	1
93	1	1	1
94	1	1	1
95	1	1	1
96	1	1	1
97	1	1	1
98	1	1	1
99	1	1	1
100	1	1	1

ITEM	DESCRIPTION	QUANTITY	UNIT	REMARKS
1	1000 W.P.A. SUBCOMPONENTS			
2	1000 W.P.A. SUBCOMPONENTS			
3	1000 W.P.A. SUBCOMPONENTS			
4	1000 W.P.A. SUBCOMPONENTS			
5	1000 W.P.A. SUBCOMPONENTS			
6	1000 W.P.A. SUBCOMPONENTS			
7	1000 W.P.A. SUBCOMPONENTS			
8	1000 W.P.A. SUBCOMPONENTS			
9	1000 W.P.A. SUBCOMPONENTS			
10	1000 W.P.A. SUBCOMPONENTS			
11	1000 W.P.A. SUBCOMPONENTS			
12	1000 W.P.A. SUBCOMPONENTS			
13	1000 W.P.A. SUBCOMPONENTS			
14	1000 W.P.A. SUBCOMPONENTS			
15	1000 W.P.A. SUBCOMPONENTS			
16	1000 W.P.A. SUBCOMPONENTS			
17	1000 W.P.A. SUBCOMPONENTS			
18	1000 W.P.A. SUBCOMPONENTS			
19	1000 W.P.A. SUBCOMPONENTS			
20	1000 W.P.A. SUBCOMPONENTS			
21	1000 W.P.A. SUBCOMPONENTS			
22	1000 W.P.A. SUBCOMPONENTS			
23	1000 W.P.A. SUBCOMPONENTS			
24	1000 W.P.A. SUBCOMPONENTS			
25	1000 W.P.A. SUBCOMPONENTS			
26	1000 W.P.A. SUBCOMPONENTS			
27	1000 W.P.A. SUBCOMPONENTS			
28	1000 W.P.A. SUBCOMPONENTS			
29	1000 W.P.A. SUBCOMPONENTS			
30	1000 W.P.A. SUBCOMPONENTS			
31	1000 W.P.A. SUBCOMPONENTS			
32	1000 W.P.A. SUBCOMPONENTS			
33	1000 W.P.A. SUBCOMPONENTS			
34	1000 W.P.A. SUBCOMPONENTS			
35	1000 W.P.A. SUBCOMPONENTS			
36	1000 W.P.A. SUBCOMPONENTS			
37	1000 W.P.A. SUBCOMPONENTS			
38	1000 W.P.A. SUBCOMPONENTS			
39	1000 W.P.A. SUBCOMPONENTS			
40	1000 W.P.A. SUBCOMPONENTS			
41	1000 W.P.A. SUBCOMPONENTS			
42	1000 W.P.A. SUBCOMPONENTS			
43	1000 W.P.A. SUBCOMPONENTS			
44	1000 W.P.A. SUBCOMPONENTS			
45	1000 W.P.A. SUBCOMPONENTS			
46	1000 W.P.A. SUBCOMPONENTS			
47	1000 W.P.A. SUBCOMPONENTS			
48	1000 W.P.A. SUBCOMPONENTS			
49	1000 W.P.A. SUBCOMPONENTS			
50	1000 W.P.A. SUBCOMPONENTS			
51	1000 W.P.A. SUBCOMPONENTS			
52	1000 W.P.A. SUBCOMPONENTS			
53	1000 W.P.A. SUBCOMPONENTS			
54	1000 W.P.A. SUBCOMPONENTS			
55	1000 W.P.A. SUBCOMPONENTS			
56	1000 W.P.A. SUBCOMPONENTS			
57	1000 W.P.A. SUBCOMPONENTS			
58	1000 W.P.A. SUBCOMPONENTS			
59	1000 W.P.A. SUBCOMPONENTS			
60	1000 W.P.A. SUBCOMPONENTS			
61	1000 W.P.A. SUBCOMPONENTS			
62	1000 W.P.A. SUBCOMPONENTS			
63	1000 W.P.A. SUBCOMPONENTS			
64	1000 W.P.A. SUBCOMPONENTS			
65	1000 W.P.A. SUBCOMPONENTS			
66	1000 W.P.A. SUBCOMPONENTS			
67	1000 W.P.A. SUBCOMPONENTS			
68	1000 W.P.A. SUBCOMPONENTS			
69	1000 W.P.A. SUBCOMPONENTS			
70	1000 W.P.A. SUBCOMPONENTS			
71	1000 W.P.A. SUBCOMPONENTS			
72	1000 W.P.A. SUBCOMPONENTS			
73	1000 W.P.A. SUBCOMPONENTS			
74	1000 W.P.A. SUBCOMPONENTS			
75	1000 W.P.A. SUBCOMPONENTS			
76	1000 W.P.A. SUBCOMPONENTS			
77	1000 W.P.A. SUBCOMPONENTS			
78	1000 W.P.A. SUBCOMPONENTS			
79	1000 W.P.A. SUBCOMPONENTS			
80	1000 W.P.A. SUBCOMPONENTS			
81	1000 W.P.A. SUBCOMPONENTS			
82	1000 W.P.A. SUBCOMPONENTS			
83	1000 W.P.A. SUBCOMPONENTS			
84	1000 W.P.A. SUBCOMPONENTS			
85	1000 W.P.A. SUBCOMPONENTS			
86	1000 W.P.A. SUBCOMPONENTS			
87	1000 W.P.A. SUBCOMPONENTS			
88	1000 W.P.A. SUBCOMPONENTS			
89	1000 W.P.A. SUBCOMPONENTS			
90	1000 W.P.A. SUBCOMPONENTS			
91	1000 W.P.A. SUBCOMPONENTS			
92	1000 W.P.A. SUBCOMPONENTS			
93	1000 W.P.A. SUBCOMPONENTS			
94	1000 W.P.A. SUBCOMPONENTS			
95	1000 W.P.A. SUBCOMPONENTS			
96	1000 W.P.A. SUBCOMPONENTS			
97	1000 W.P.A. SUBCOMPONENTS			
98	1000 W.P.A. SUBCOMPONENTS			
99	1000 W.P.A. SUBCOMPONENTS			
100	1000 W.P.A. SUBCOMPONENTS			

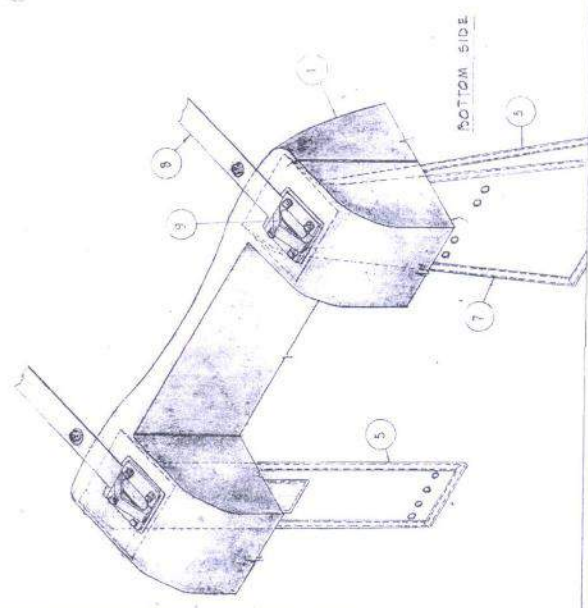


DETAIL No. 14 IN SECTION VIEW

DETAIL No. 14 IN SECTION VIEW



DETAIL No. 14 IN SECTION VIEW



BOTTOM SIDE

LIST OF MATERIALS - COMP

ITEM	DESCRIPTION	QUANTITY	UNIT	REMARKS
1	1000 W.P.A. SUBCOMPONENTS			
2	1000 W.P.A. SUBCOMPONENTS			
3	1000 W.P.A. SUBCOMPONENTS			
4	1000 W.P.A. SUBCOMPONENTS			
5	1000 W.P.A. SUBCOMPONENTS			
6	1000 W.P.A. SUBCOMPONENTS			
7	1000 W.P.A. SUBCOMPONENTS			
8	1000 W.P.A. SUBCOMPONENTS			
9	1000 W.P.A. SUBCOMPONENTS			
10	1000 W.P.A. SUBCOMPONENTS			
11	1000 W.P.A. SUBCOMPONENTS			
12	1000 W.P.A. SUBCOMPONENTS			
13	1000 W.P.A. SUBCOMPONENTS			
14	1000 W.P.A. SUBCOMPONENTS			
15	1000 W.P.A. SUBCOMPONENTS			
16	1000 W.P.A. SUBCOMPONENTS			
17	1000 W.P.A. SUBCOMPONENTS			
18	1000 W.P.A. SUBCOMPONENTS			
19	1000 W.P.A. SUBCOMPONENTS			
20	1000 W.P.A. SUBCOMPONENTS			
21	1000 W.P.A. SUBCOMPONENTS			
22	1000 W.P.A. SUBCOMPONENTS			
23	1000 W.P.A. SUBCOMPONENTS			
24	1000 W.P.A. SUBCOMPONENTS			
25	1000 W.P.A. SUBCOMPONENTS			
26	1000 W.P.A. SUBCOMPONENTS			
27	1000 W.P.A. SUBCOMPONENTS			
28	1000 W.P.A. SUBCOMPONENTS			
29	1000 W.P.A. SUBCOMPONENTS			
30	1000 W.P.A. SUBCOMPONENTS			
31	1000 W.P.A. SUBCOMPONENTS			
32	1000 W.P.A. SUBCOMPONENTS			
33	1000 W.P.A. SUBCOMPONENTS			
34	1000 W.P.A. SUBCOMPONENTS			
35	1000 W.P.A. SUBCOMPONENTS			
36	1000 W.P.A. SUBCOMPONENTS			
37	1000 W.P.A. SUBCOMPONENTS			
38	1000 W.P.A. SUBCOMPONENTS			
39	1000 W.P.A. SUBCOMPONENTS			
40	1000 W.P.A. SUBCOMPONENTS			
41	1000 W.P.A. SUBCOMPONENTS			
42	1000 W.P.A. SUBCOMPONENTS			
43	1000 W.P.A. SUBCOMPONENTS			







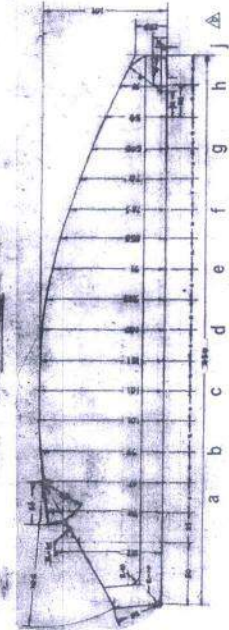
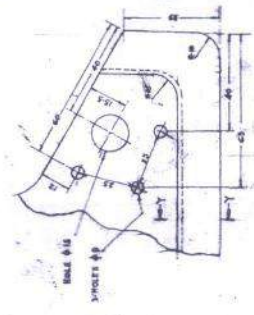
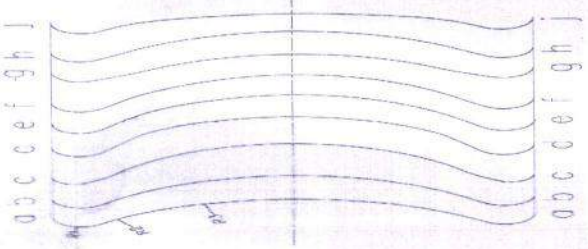
**b** SECTION

(FOR BETTER CLARITY ONLY RADIUS OF CURVATURE IS SHOWN)

NTS  
(SEE TABLE 1 FOR DIMENSIONS OF R1, R2 & R3)

RADIUS	SECTIONS									
	aa	bb	cc	dd	ee	ff	gg	hh	ii	jj
R.1	25	25	20	25	25	20	25	25	27	27
R.2	-	185	508	385	184	385	340	380	-	-
R.3	263	230	192	200	200	200	230	235	235	517

**b** TABLE 1 - SHOWING DIMENSIONS OF RADIUS (R1, R2 & R3)



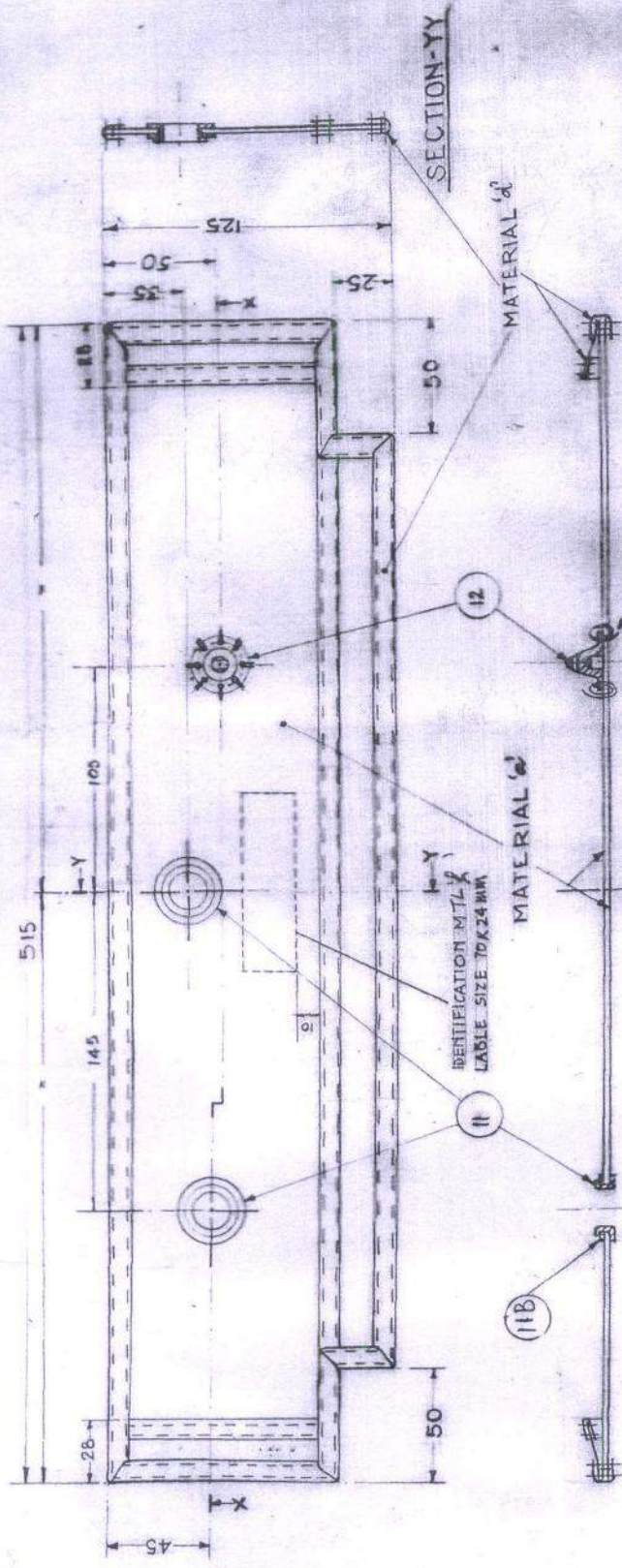
COLLECTOR: *M/S. Anand*  
 CONTRACTOR: *VERDE, ARYA GROUP / P.A.S.*  
 PROJECT: *CONTAINERS*  
 DRAWING NO: *MBE/278 PA*  
 FOR: *TRUCK*

NO.	REV.	DATE	BY	CHKD.





2



SECTION-XX

1-0FF

ROUND HAND STITCHED WITH MATERIAL 12  
2-3 ROUND OF STITCHING AT EACH PLACE.

16	12	CONE	
15	11-B	WASHER	
15	11	GROMMET	
		FRONT FLAP-I	
		NOMENCLATURE	
			NO OFF

DETAIL-INDEX

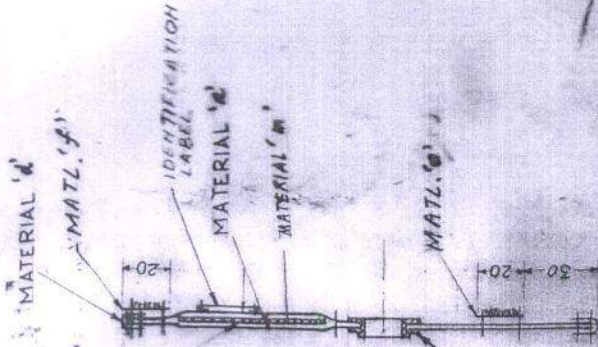
DRN	PA S	MATERIAL:-	ADR DE, AGRA
CHD	GP DIR	FINISH:-	
TRD	PROJ OFFR	HEAT TREATMENT	
COMP	BY/C D		
SCALE:-			
1:2			
DIMENSIONS			
J.N. MM.			
TOLENANCE:-			
AS/AIAA-6-017			
1971			
		FRONT FLAP-I	
		MBEU/7074 PA HARD SHELL -	
		CONTAINER FOR JAGUAR AIRCRAFT	
			HEAD Q/A
			DRG NO
			ADRDE/1454-00 (10)

NOTE:- ALL MACHINE STITCHING  
TO BE DONE WITH MATERIAL 12  
3-4 STITCHES PER CM.

R-NO	DATE	ZONE	AUTHORITY	BRIEF	RECORD	o/c	IP6D



3



SECTION-YY

3-A

11A comp'd.

H

11A

IDENTIFICATION LABEL

15

120

H

H

H

H

H

H

H

H

8

7

6

5

4

3

2

2

2

2

2

F

E

D

C

B

A

A

A

A

A

A

F

E

D

C

B

A

A

A

A

A

A

F

E

D

C

B

A

A

A

A

A

A

F

E

D

C

B

A

A

A

A

A

A

F

E

D

C

B

A

A

A

A

A

A

F

E

D

C

B

A

A

A

A

A

A

F

E

D

C

B

A

A

A

A

A

A

F

E

D

C

B

A

A

A

A

A

A

F

E

D

C

B

A

A

A

A

A

A

F

E

D

C

B

A

A

A

A

A

A

F

E

D

C

B

A

A

A

A

A

A

F

E

D

C

B

A

A

A

A

A

A

F

E

D

C

B

A

A

A

A

A

A

F

E

D

C

B

A

A

A

A

A

A

F

E

D

C

B

A

A

A

A

A

A

F

E

D

C

B

A

A

A

A

A

A

F

E

D

C

B

A

A

A

A

A

A

F

E

D

C

B

A

A

A

A

A

A

F

E

D

C

B

A

A

A

A

A

A

F

E

D

C

B

A

A

A

A

A

A

F

E

D

C

B

A

A

A

A

A

A

F

E

D

C

B

A

A

A

A

A

A

F

E

D

C

B

A

A

A

A

A

A

F

E

D

C

B

A

A

A

A

A

A

F

E

D

C

B

A

A

A

A

A

A

F

E

D

C

B

A

A

A

A

A

A

F

E

D

C

B

A

A

A

A

A

A

F

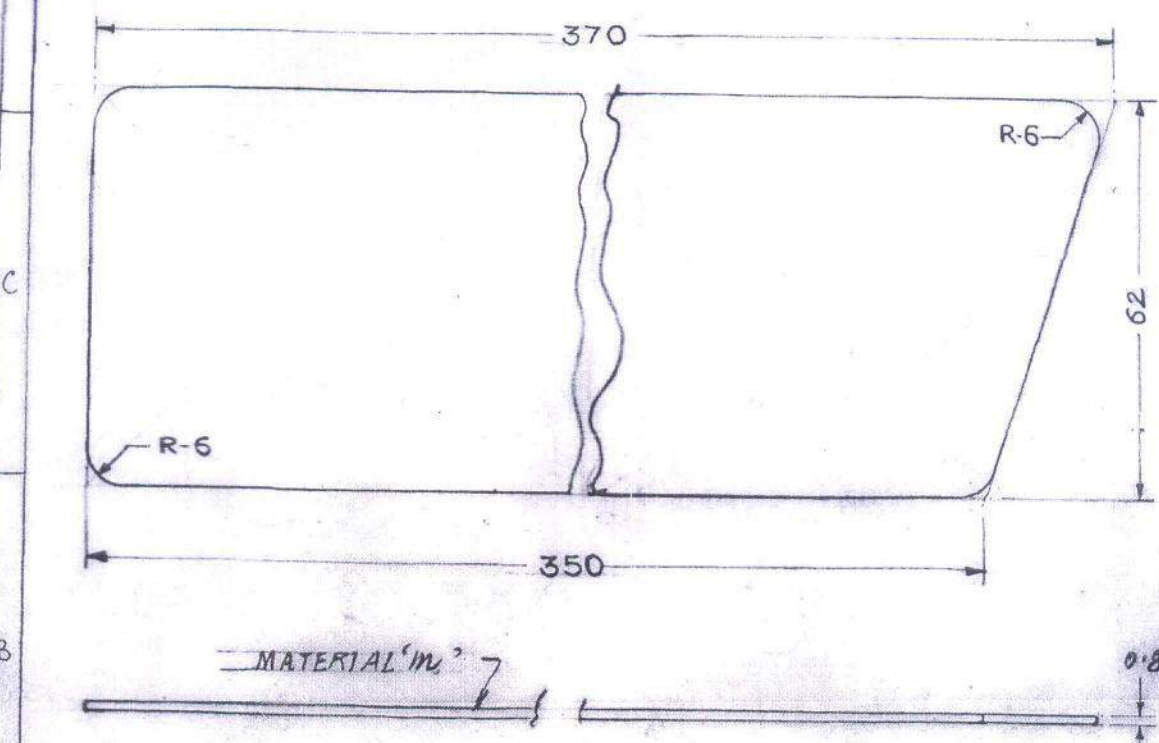
E

D

C



3-A



1-OFF

*RCMA(K)*

R.NO	DATE	ZONE	AUTHORITY	BRIEF RECORD	O/C	PGD
DRN.	M. RAFIG	PA S		MATERIAL:- HDP SHEET 0.8mm THICK	ADRDE; AGRA	
CHD.				FINISH:-		
TRD.		GP. DIR	DIV. HD	HEAT TREATMENT:-	APPROVED:	
COMP.		PROJ. OFFR.				
SCALE:-	1:1	PLASTIC FLAP			HEAD Q/A	
DIMENSIONS IN mm.		MBEU/7074 PA HARD SHELL -			DRG. NO. (b)	
TOLERANCE:-		CONTAINER FOR JAGUAR AIRCRAFT			ADRDE/1454-006	



4A

11

R-25

MATERIAL 'W'

110

MATERIAL 'W'

IDENTIFICATION LABEL

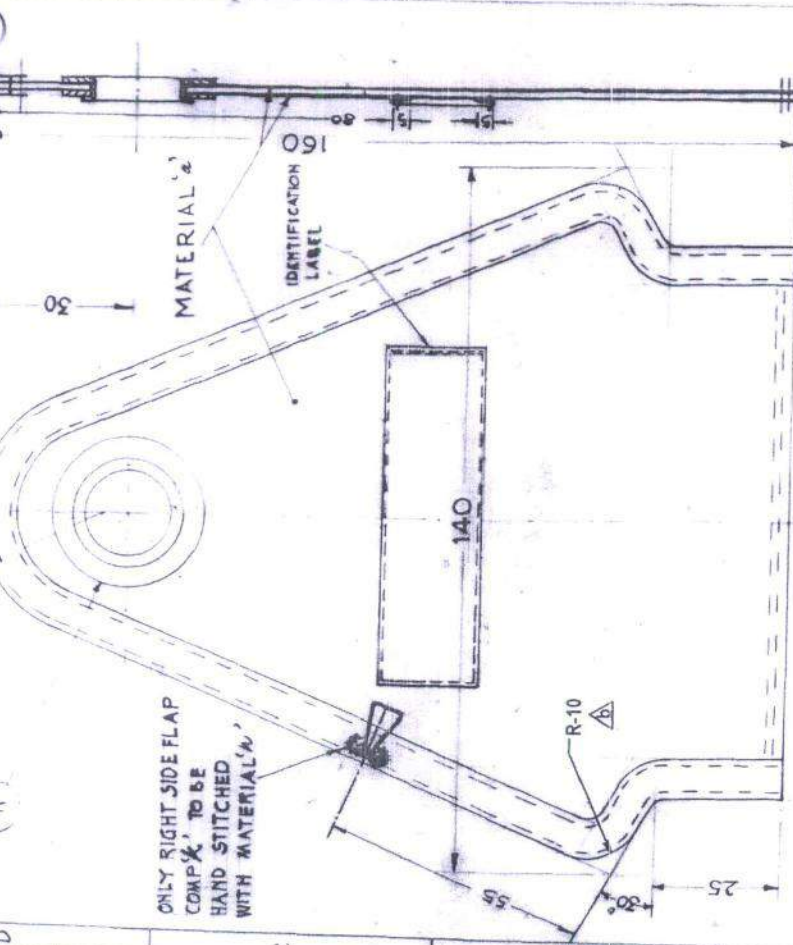
140

R-10

SECTION-XX

110

25



NOTE:-  
 ALL MACHINE STITCHING TO BE DONE WITH MATERIAL 'W' 3-4 STITCHES PER CM.

Rev.No	15-05-19	A3	B4	QMS/PG/PAS/245	AMENDED AS PER CHANGE SHEET No.199
DRN	M:RAFIQ	PA S	AGRA	AGRDE; AGRA	BRIEF RECORD
CHD					
TRD					
COMP					
SCALE:-	1:1				
DIMENSIONS IN mm					
TOLERANCE:-					
ANSI/ASMA S-17A (1993)					

APPROVED  
 PROJ.OFFR. / GROUP OFFR.  
 MBEU/7074 PA HARD SHELL CONTAINER FOR JAGUAR AIRCRAFT

4A

11

R25

MATERIAL 'W'

110

MATERIAL 'W'

IDENTIFICATION LABEL

140

R10

SECTION-XX

110

30

MATERIAL 'W'

IDENTIFICATION LABEL

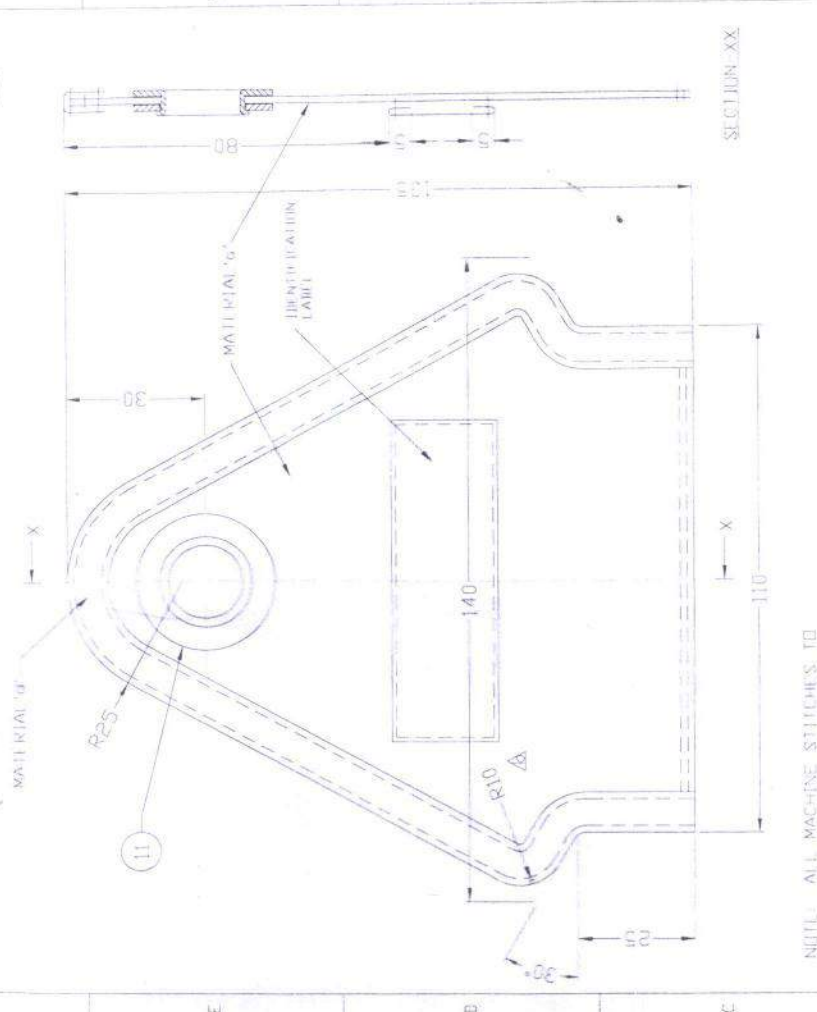
140

R10

SECTION-XX

110

30



NOTE:  
 ALL MACHINE STITCHES TO BE DONE WITH MATERIAL 'W' 3-4 STITCHES PER CM.

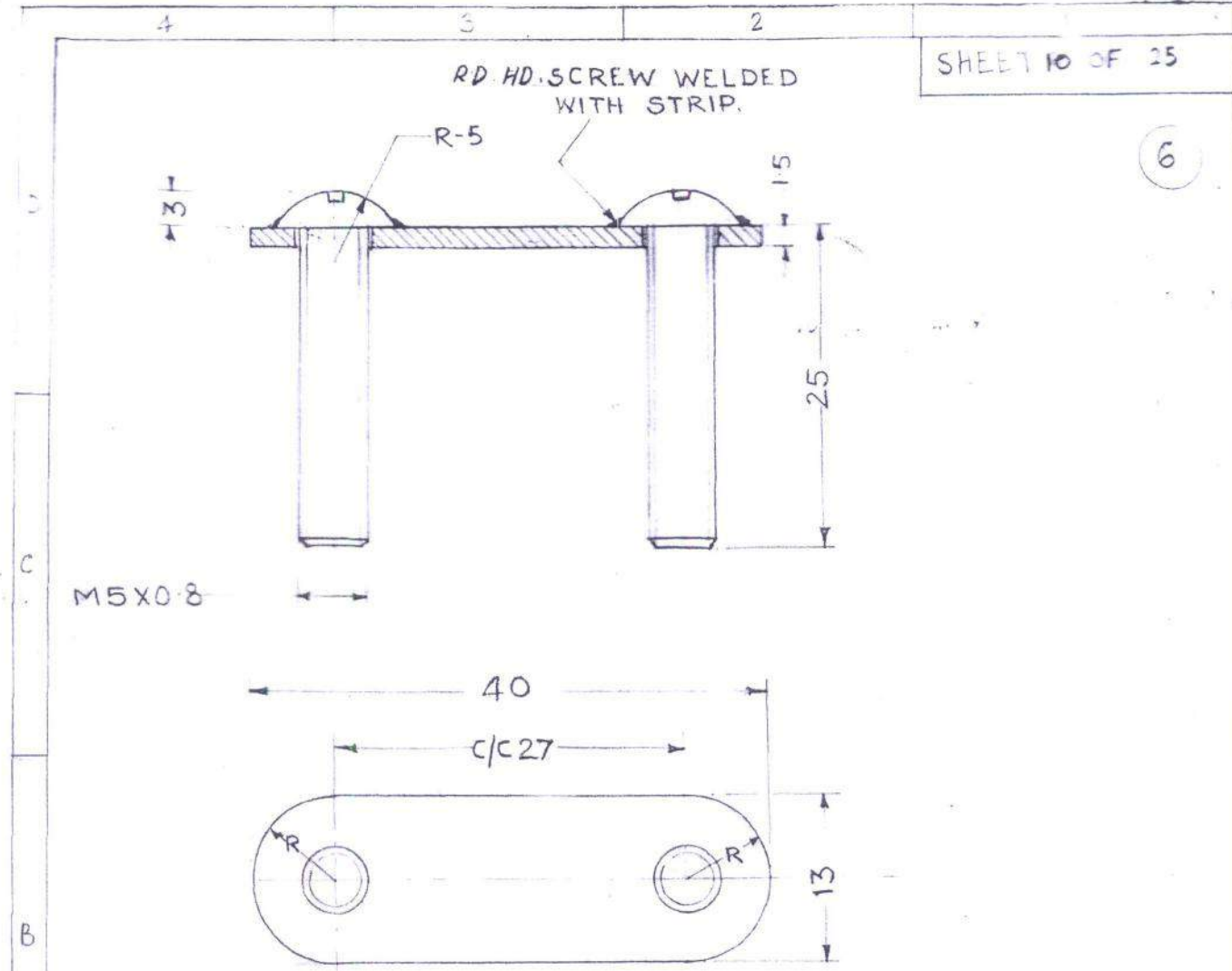
Rev.No	15-05-19	A3	B4	QMS/PG/PAS/245	AMENDED AS PER CHANGE SHEET No.199
DRN	M:RAFIQ	PA S	AGRA	AGRDE; AGRA	BRIEF RECORD
CHD					
TRD					
COMP					
SCALE:-	1:1				
DIMENSIONS IN mm					
TOLERANCE:-					
ANSI/ASMA S-17A (1993)					

APPROVED  
 PROJ.OFFR. / GROUP OFFR.  
 MBEU/7074 PA HARD SHELL CONTAINER FOR JAGUAR AIRCRAFT









2-OFF

MATERIAL: AUSTENITIC STAIN LESS STEEL AS PER SPECN. NO. AISI - 304 (18% CHROMIUM 8% NICKEL)

M/S: GEN. ENG<sup>n</sup>.

*RCMA*  
RCMA(K)

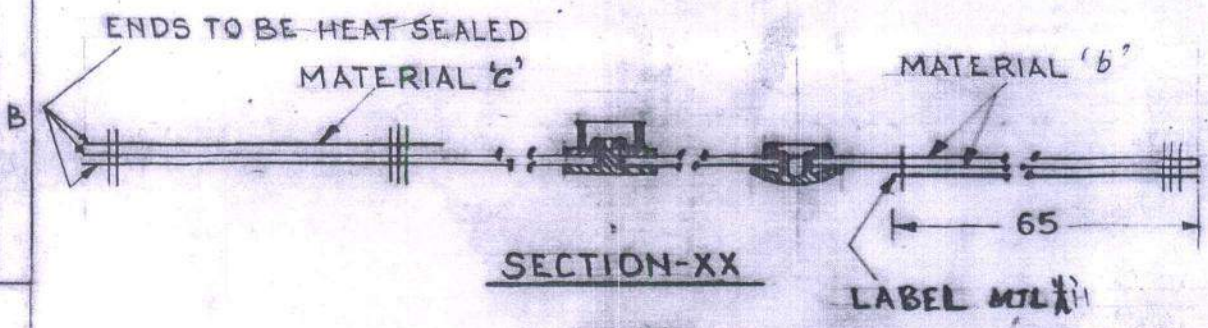
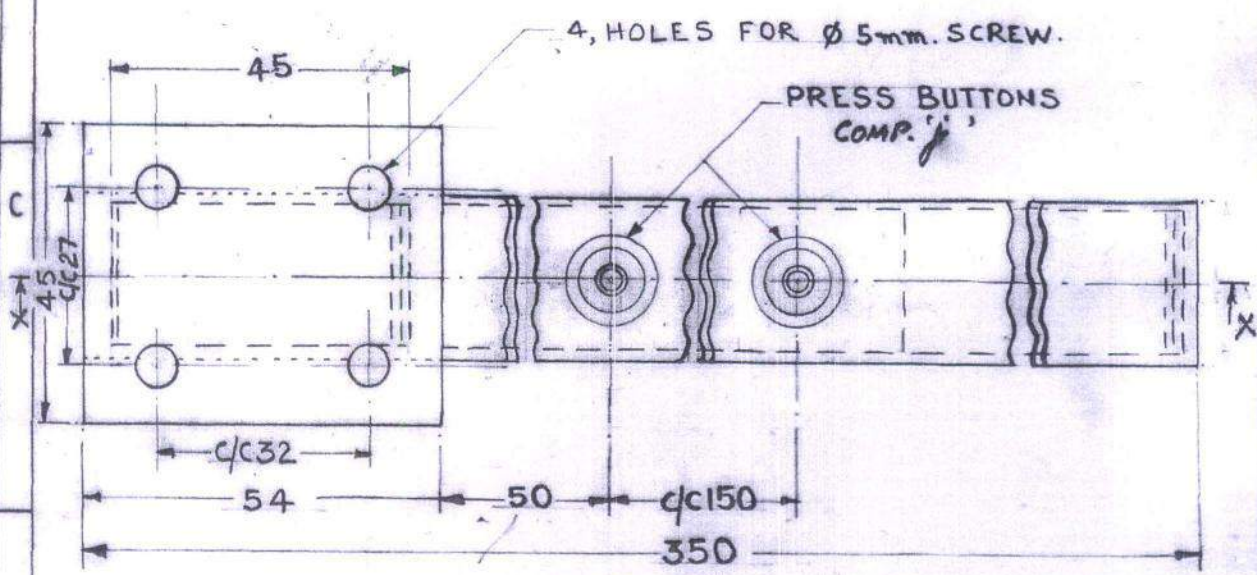
R.NO.	DATE	ZONE	AUTHORITY	BRIEF RECORD		O/C	PGD
DRN.	M. RAFIQ	P.A.S.	MATERIAL:- AS SPECIFIED		ADRDE; AGRA		
CHD			FINISH:-				
TRD		GP. DIR	DIV. HD	HEAT TREATMENT		APPROVED	
COMP.		PROJ. OFFR.	N. F. S.				
SCALE:-	2:1	D/C D'S		SCREW PLATE		HEAD Q.A	
DIMENSIONS IN	mm.	MBEU/7074 PA HARD SHELL -					
TOLERANCE:-	IS: 2102 (Pt 1)	CONTAINER FOR JAGUAR AIRCRAFT					
MEDIUM				DRC. N.		DRDE/1454-00 (b)	







8



**SECTION-XX**  
**2-OFF**

**NOTE:-**

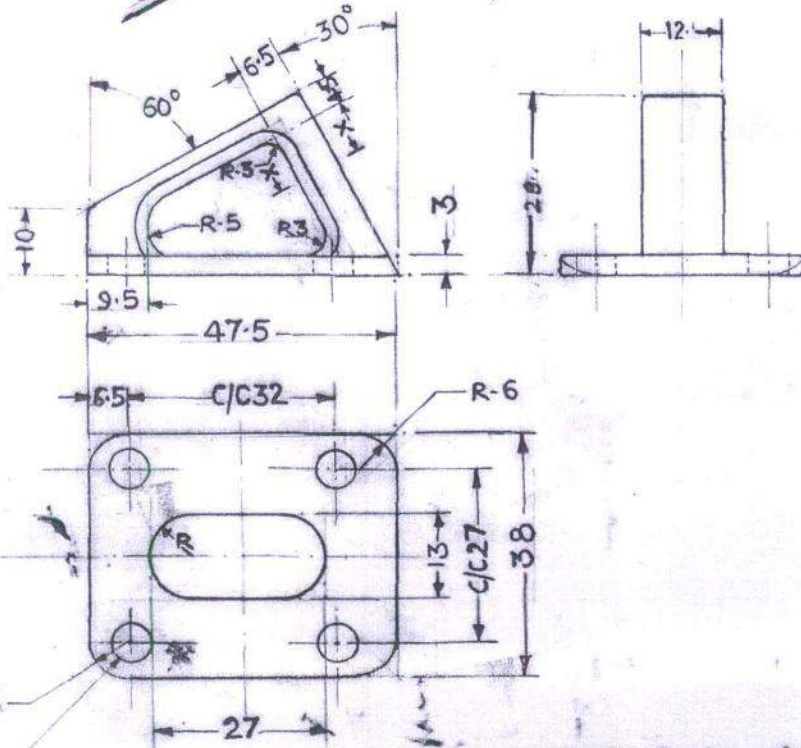
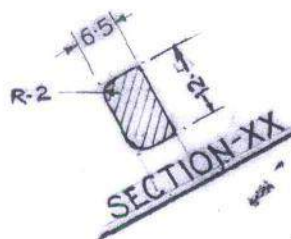
ALL STITCHING TO BE DONE WITH MATERIAL 'b' 3-4 STITCHES PER CM.

*RCMA(K)*

R.No.	DATE	ZONE	AUTHORITY	BRIEF RECORD		O/C	PGD.
DRN.	M. RAJIV		PAS	MATERIAL :-		ADRDE; AGRA.	
CHD.				AS SHT. No 1		APPROVED.	
TRD.				FINISH :-		HEAD R.A)	
COMP.			GP. DIR DIV. HD	HEAT TREATMENT :-		DRG. NO.	
SCALE :-	1:1		PROJ. OFFR.	-		ADRDE/1454-00 (d/b)	
DIMENSIONS IN mm.				REAR WEBBING			
TOLERANCE :-							
ANSI/AIAA-5-017-1991				MBEU/7074 PA HARD SHELL-CONTAINER FOR JAGUAR AIRCRAFT			



9



4, HOLES  $\phi 6$

2-OFF

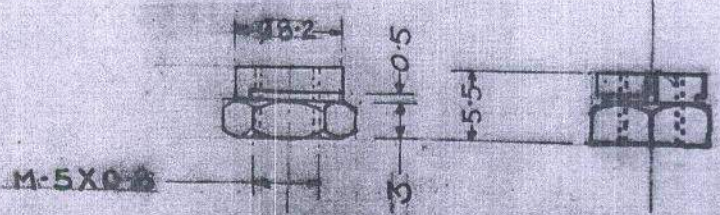
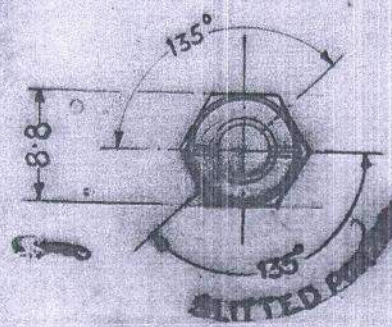
MATERIAL: AUSTENITIC  
STAIN LESS STEEL AS  
PER SPEC. NO. AISI 304  
(18% CHROMIUM 8%  
NICKEL)

M/S: GEN. ENGR.

RCMA(K)

R.NO	DATE	ZONE	AUTHORITY	BRIEF RECORD	O/C	PGD
DRN.	M. RAJIB	PAS		MATERIAL: - AS SPECIFIED	ADRDE; AGRA.	
CHD.				FINISH: -		
TRD.		GP. DIR	DIV. RD	HEAT TREATMENT: -	APPROVED.	
COMP.		PROJ OFFR.				
SCALE: - 1:1	DIMENSIONS IN mm.			HOOK		
TOLERANCE: - IS: 2102 (Pt-1) (MEDIUM)	MBEU/7074 PA HARD SHELL -			HEAD Q.A.		
CONTAINER FOR JAGUAR AIRCRAFT				DRG. NO. ADRDE/1454-00(A)(b)		





8-107

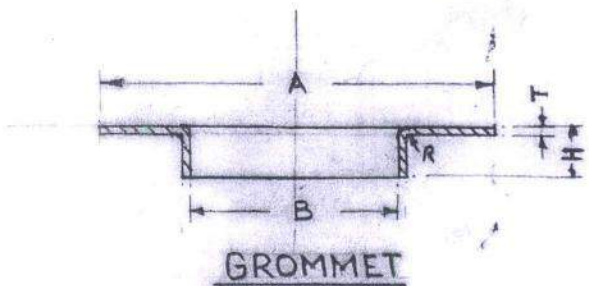
MATERIAL: AUSTENITIC  
STAIN LESS STEEL AS PER  
SPEC. NO. 200 (18%  
CHROMIUM 8% NICKEL

DESIGN - GEN ENGR.

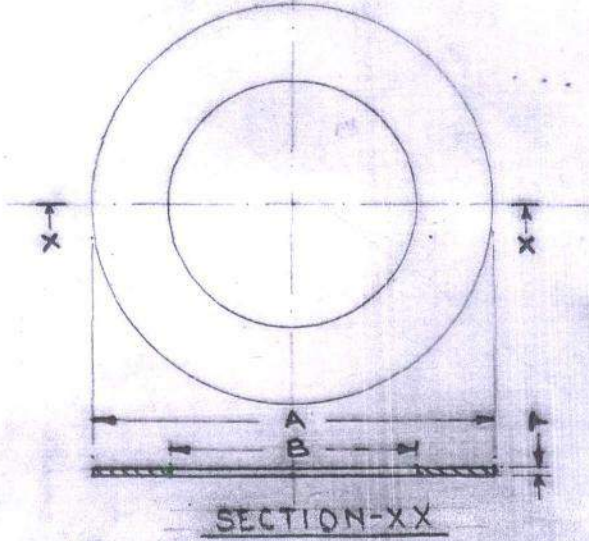
part  
drawing

R.No.	DATE	PRIORITY	BRIEF RECORD		O/C PDR.
DRN. M.		PAS	MATERIAL -	AS SPECIFIED	ADRDE; ABRA.
CHD.			FINISH:-	-	
TRD.			HEAT TREATMENT:-	-	APPROVED
OMP.					
SCALE:-			LOCK NUT		
			M BEU/7074 IS HANU SILLI-		
			CONTAINER FOR JARJAN SHERIFF		
			DRG. NO.		
			ADRDE/145400 (1)(b)		





- II
- II-A
- II-B
- II-C



**GROMMET**

ITEM NO	A	B	H	T	NO. OFF.
II	Ø30	Ø16	4	0.5	5
II A	Ø28	Ø12	4	0.5	2

**WASHER**

ITEM NO	A	B	T	NO. OFF.
II B	Ø30	Ø18	0.5	5
II C	Ø28	Ø14	0.5	2

**MATERIAL:-**  
 STAINLESS STEEL, AUSTENITIC  
 TO SPEN. No. 15100-1972  
 DESIGNATION 4 or 10/110  
 SOFTENED CONDITION.

M/S: PRESS TOOL

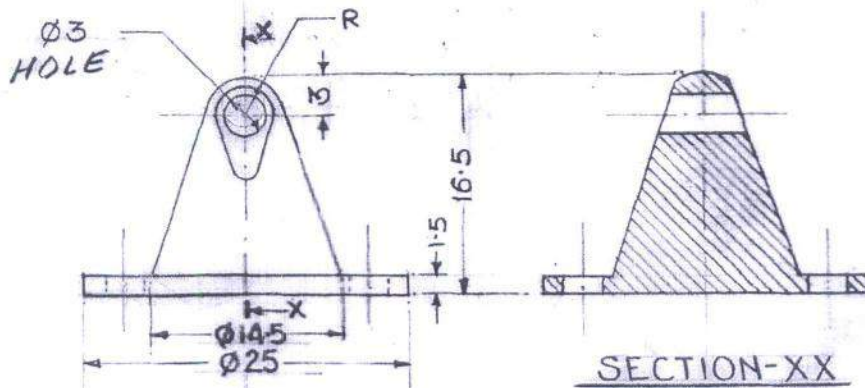
*Ac*  
 RCMA(K)

R.NO. DATE ZONE AUTHORITY BRIEF RECORD O/C PGD

DRN: M-RAFID	PAS H	MATERIAL:-	ADRDE; AGRA
CHD	2105	FINISH:-	
TRD	GP. DIR DIV. HD	HEAT TREATMENT:-	APPROVED
COMP	PROJ. OFFR. M/S		<i>[Signature]</i>
SCALE:- 2:1	0/c D/S. P/S		HEAD Q.A.)
DIMENSIONS IN mm.	<b>GROMMET WITH WASHER</b>		
TOLERANCE:- IS: 2102 (Pt 1) MEDIUM	<b>MBEU/7074 PA HARD SHELL- CONTAINER FOR JAGUAR AIRCRAFT</b>		DRG. NO. (b) ADRDE/1454.00(1)



(12)



8 HOLES  $\phi 3$ mm. ON 19mm. PCD.  
EQUALLY SPACED.

1-OFF

MATERIAL:-

BRASS 60/40 TO SPECN. No.  
IS: 319-1968

FINISH:-

NI-CR PLATED AS PER  
SPECN. No. IS: 1078-1993  
CU-NI 25 b CR A.

Mfg:- GEN. ENGR.

*Per*  
RMA(K)

R.NO DATE ZONE AUTHORITY BRIEF RECORD O/C PGD

DRN. M. RAFIQ  
CHD. *[Signature]*  
TRD.  
COMP.

PA'S  
*[Signature]*  
GP. DIR DIV. HD  
PROJ. OFFR. *[Signature]*  
DYC D/S *[Signature]*

MATERIAL:-  
AS SPECIFIED  
FINISH:-  
AS SPECIFIED  
HEAT TREATMENT:-  
—

ADRDE; AGRA.



APPROVED.

*[Signature]*  
HEAD Q/A

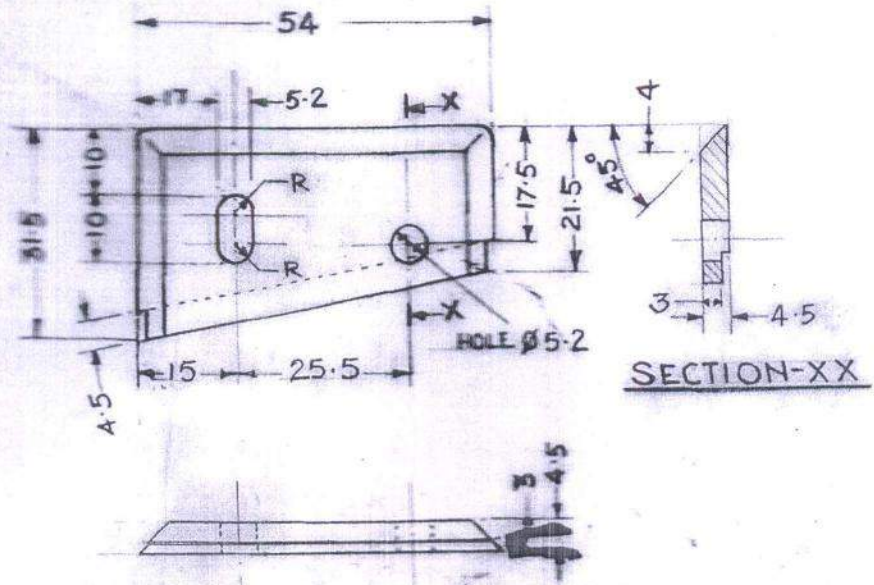
DIMENSIONS IN mm.

TOLERANCE:-  
IS: 2102  
MEDIUM (P-1)

CONE  
MBEU/7074 PA HARD SHELL-  
CONTAINER FOR JAGUAR AIRCRAFT

DRG. NO. (b)  
ADRDE/1454-00(A)





MATERIAL: AUSTENITIC STAIN  
LESS STEEL AS PER SPECN. NO  
AISI - 304 (18% CHROMIUM  
- 8% NICKEL)

M.I.G. :- GEN. ENG'N.

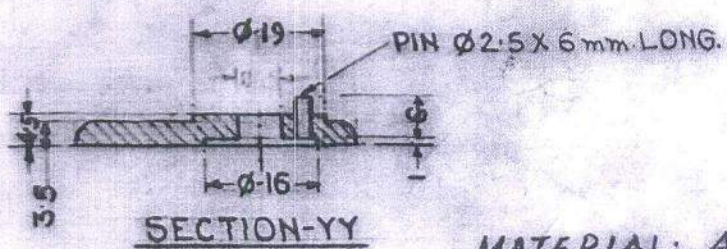
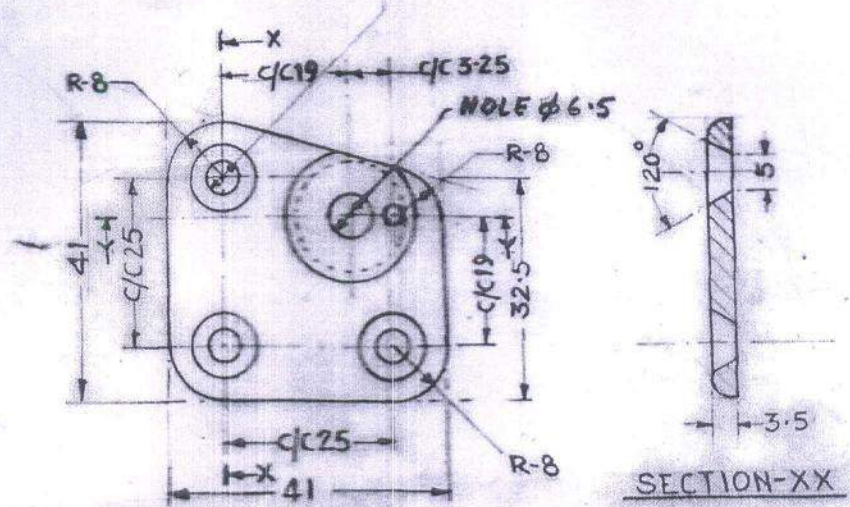
*RCMACK*

RNO.	DATE	ZONE	AUTHORITY	BRIEF RECORD	O/C	PGD.
DRN: M. RAFIQ			PAS	MATERIAL: AS SPECIFIED	ADRDE; AGRA.	
CHD.				FINISH: -		
TRD.			GP. DIR	HEAT TREATMENT: -	APPROVED	
COMP.			DIV. HD			
SCALE: - 1:1			PROJ. OFFR. N. P. S.		HEAD Q.A.	
DIMENSIONS IN mm.	SUPPORTING PAD					
TOLERANCE: - 15 2102 MEDIUM (PT-1)	MBEU/7074 PA HARD SHELL- CONTAINER FOR JAGUAR AIRCRAFT					
					DRG. No. ADRDE/1454-00(A)(B)	



(14)

3-CSK HOLES TO  
SUIT. M-5 X 0.8 SCREW



SECTION-YY

1-OFF

MATERIAL:- AUSTENITIC  
STAIN LESS STEEL  
AS PER SPECH. No AISI  
304 (18% CHROMIUM  
8% NICKEL)

Mfg:- GEN. ENG<sup>n</sup>.

*[Signature]*  
RCMA(K)

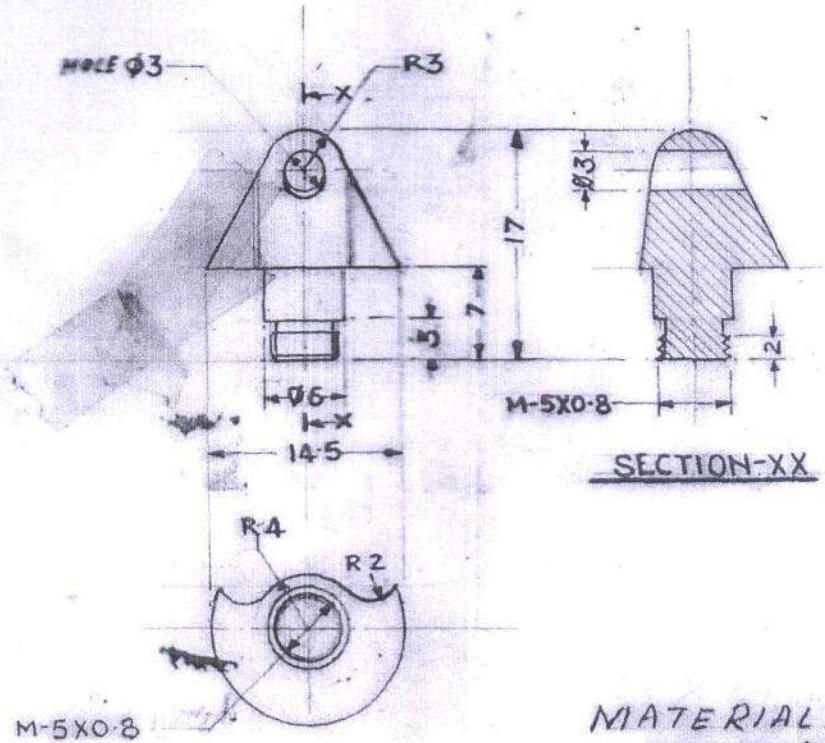
RNO	DATE	ZONE	AUTHORITY	BRIEF RECORD	O/C PGD
DRN: M RAFIQ			PAS	MATERIAL:- AS SPECIFIED	ADRDE; AGRA
CHD:			<i>[Signature]</i>	FINISH:-	
TRD:			GP. DIR DIV. HD	HEAT TREATMENT:-	APPROVED: <i>[Signature]</i>
COMP.			PROJ. OFFR. <i>[Signature]</i>		
SCALE:- 1:1			O/C DSR <i>[Signature]</i>		
DIMENSIONS IN mm	PLATE WITH ROTATING CONE				HEAD Q/A
TOLERANCE:- 15:20 (1:1) MEDIUM	MBEU/7074 PA HARD SHELL- CONTAINER FOR JAGUAR AIRCRAFT				DRG. No. ADRDE/1454-00 (b)







14-B



MATERIAL:- AUSTENITIC  
STAIN LESS STEEL  
AS PER. SPECN. NO. AISI  
304 (18% CHROMIUM  
8% NICKEL)

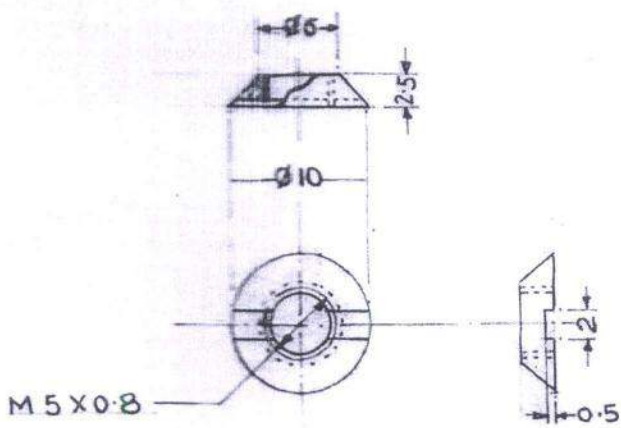
Mfg.: GEN. ENGR.

RCMA(K)

RNO.	DATE	ZONE	AUTHORITY	BRIEF RECORD	O/C/CPGD
DRN. M. RAFIG			PAS	MATERIAL: - AS SPECIFIED	ADRDE; AGRA
CHD. TRD.			GP. DIR DIV. HD 21/05	FINISH: -	
COMP.			PROJ. OFFR. N. S. B. S. P. S.	HEAT TREATMENT: -	APPROVED:
SCALE: - 2:1					HEAD Q.A.
DIMENSIONS IN mm.			CONE		
TOLERANCE: - IS 2102 MEDIUM (PT-1)			MBEU/7074 PA HARD SHELL - CONTAINER FOR JAGUAR AIRCRAFT		
				DRG. No. ADRDE/1454.00(A)(b)	



1A-C



3-OFF

MATERIAL:- AUSTENITIC STAIN  
LESS STEEL AS PER SPEC.  
NO. AISI-304 (18%  
CHROMIUM, 8% NICKEL)

M/S GEN. ENGR.

RCMAK

RNO	DATE	ZONE	AUTHORITY	BRIEF RECORD	O/C PGD
DRN. M.RAFIQ.			PAS	MATERIAL:- AS SPECIFIED	ADR DE AGRA
CHD.			GP. DIR	FINISH:-	
TRD.			DIV. 4ED	HEAT TREATMENT:-	
COMP.			PROJ. OFFR. N...		APPROVED
SCALE:- 2:1			O/C D/S	SCREW	HEAD R.A
DIMENSIONS IN m.m.				MBEU/7074 PA HARD SHELL -	DRG. No.
TOLERANCE:- 15.2102 MEDIUM (PT-1)				CONTAINER FOR JAGUAR AIRCRAFT	ADR DE/1454-00 (A)(B)

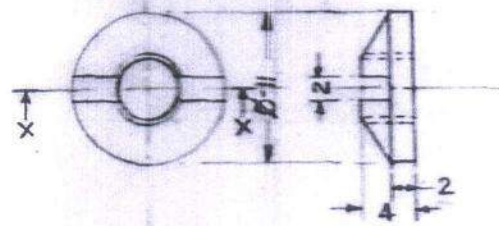


4

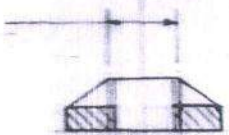
3

2

14-D



M5X0.8



SECTION-XX

1-OFF

MATERIAL:- AUSTENITIC  
 STAIN LESS STEEL  
 AS PER SPECN. NO  
 AISI-304 (18%  
 CHROMIUM 8% NICKEL)

M/3:- GEN. ENGR.

*[Signature]*  
 RCMA(K)

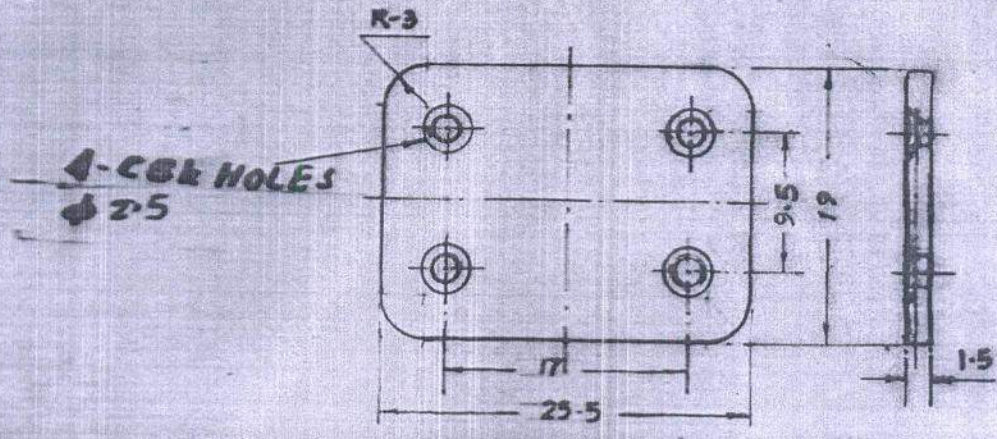
RNO	DATE	ZONE	AUTHORITY	BRIEF RECORD	O/C	PGD
DRN	M. RAFIQ	PAS		MATERIAL:- AS SPECIFIED		ADR DE AGRA
CHD	<i>[Signature]</i>	<i>[Signature]</i>		FINISH:-		
TRD		GP. DIR	DIV. HD	HEAT TREATMENT:-		APPROVED
COMP		PROJ OFFR.	<i>[Signature]</i>			<i>[Signature]</i>
SCALE:- 2:1		DIMENSIONS IN mm.		TOLERANCE:- IS: 2102 MEDIUM (P.1)		HEAD Q.A.
NUT FOR CONE				MBEU/7074 PA HARD SHELL-		DRG. NO.
CONTAINER FOR JAGUAR AIRCRAFT						ADR DE/1454-00 (b)







15-A



1 - OFF

MATERIAL: AUSTENITIC  
STAIN LESS STEEL  
AS PER SPECH. NO. AISI-304  
(18% CHROMIUM 8%  
NICKEL)

MFG. PRESS TOOL

*RCMA*  
RCMA(K)

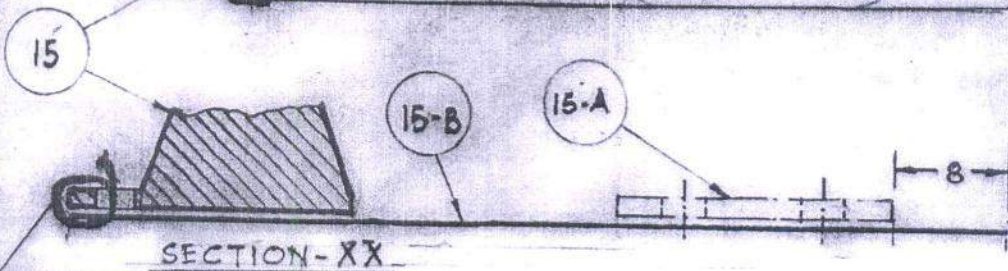
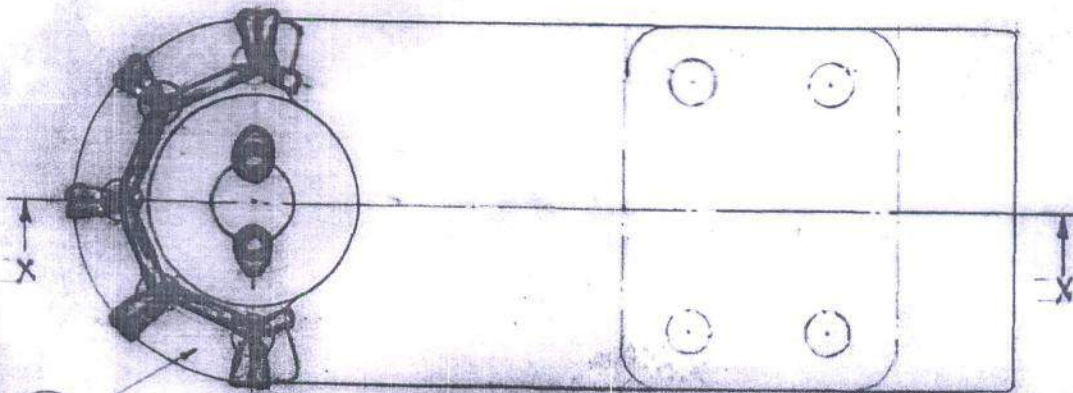
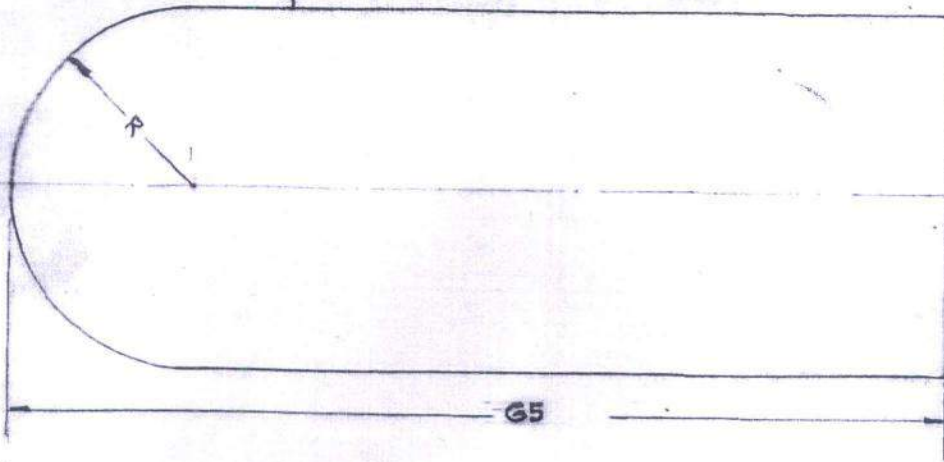
AUTHORITY		BRIEF RECORD		o/c PGD	
PAS		MATERIAL:- AS SPECIFIED		ADRDE, AGRA	
<i>[Signature]</i>		FINISH:- RS			
GP. DIR DIV. HD		HEAT TREATMENT:-		APPROVED	
PRO-OFF N				<i>[Signature]</i>	
OVC PDS P/E				HEAD Q/A	
PLATE					
MBEU/7074 PA HARD SHELL CONTAINER					
FOR JAGUAR AIRCRAFT					
DRG. No. 1				ADRDE/1454-00(A)(b)	

16.2102  
MEDIUM  
CP-17



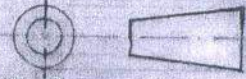
15-B

MATERIAL 'b'  
↓  
ENDS TO BE HEAT SEALED



HAND STITCHED WITH MATERIAL 'B' 2-3 ROUNDS

*RCMA(K)*

DN No.	DATE	ZONE	AUTHORITY	BRIEF RECORD	O/C D/S	QA HEAD
DRN: <i>Alodi</i>			PAS	MATERIAL: -		ADRDE, AGRA
CHD: <i>[Signature]</i>			<i>[Signature]</i>	FINISH: -		 APPROVED <i>[Signature]</i>
TKD: <i>[Signature]</i>			GR DIR DIV HD	HEAT TREATMENT: -		
SCALE: 2:1			PROJ. OFFR. <i>[Signature]</i>			HEAD Q/A
DIMENSIONS IN MM			OVC D/S <i>[Signature]</i>			DRG NO. ADRDE/1454-00(b)
TOL: ANSI/AIAA-5-017-1991				<b>HALF CONE</b> <b>MBEU/7074 PA HARD SHELL CONTAINER FOR JAGUAR AIRCRAFT</b>		