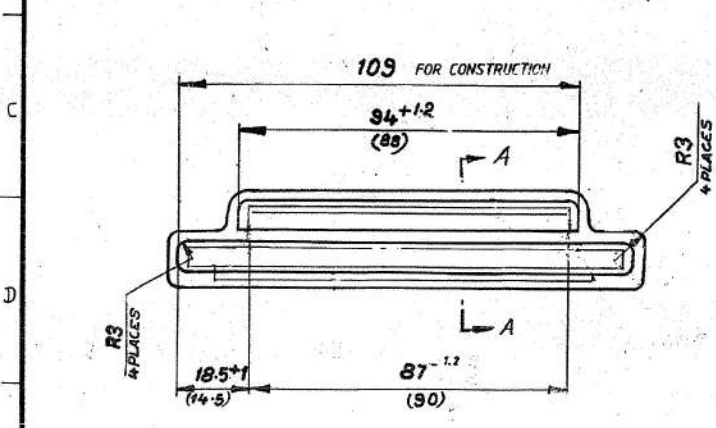
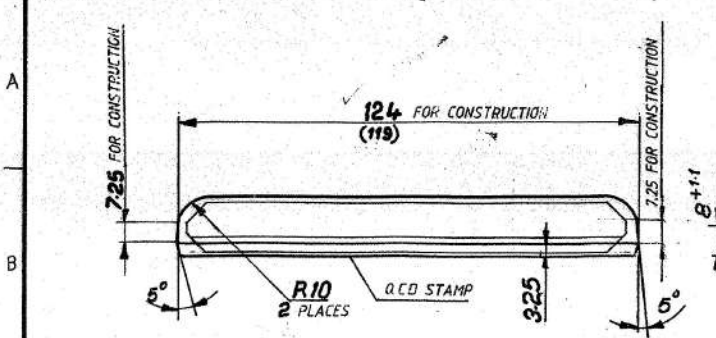


1 2 3 4 5 6 7 8



- NOTES:-
1. DIMENSIONS ARE IN mm.
 2. FIRST ANGLE PROJECTION.
 3. SCALE:- 1:1
 4. FORGING OF GROUP II AS PER GOST 8479-70 HB 217 MAX.
 5. DRAFT ANGLE 5°
 6. UN-SPECIFIED RADII 15R.
 7. FLASH REMAINDER UP TO 0.5 mm.
 8. WARPING UP TO 0.8 mm.
 9. CONVENTIONAL CONTOUR AND DIMENSIONS GIVEN IN BRACKETS PERTAIN TO THE FINISHED PART.
 10. STAMP PART NO, MELT NO, AND QCD STAMP ON THE TAG
 11. 5% OF A BATCH SHOULD BE CHECKED FOR HARDNESS AS PER GOST 8479-70.
 12. WEIGHT OF THE FORGING 0.220 Kgs.

VETTED FOR MATERIAL ONLY

[Signature]
 Principal Scientific Officer,
 Quality Assurance Officer,
 For Senior Quality Assurance Officer,
 Senior Quality Assurance Exp. (Arms)
 Tiruchirappalli-600016

CERTIFIED CORRECT COPY OF APPROVED DRAWINGS AT THIS DATE..... 17.11.2020

Design & Drawing Office
 Ordnance Factory,
 Tiruchirappalli-600016

UN CONTROLLED COPY

HEAT-TREATMENT:-FORGINGS ARE NORMALIZED AND TEMPERED. FOR HEAT-TREATMENT SCHEDULE REFER DRAWING NO: M 881 SHEET NO: 1 TO 3 AND SHEET NO: 6 SL: NO: 18.

MATERIAL:- STEEL 30XH2MΦA OCT 3-98-80 ✓
 ALTERNATE MATERIAL:- STEEL 30XH2MΦAGOST 4543-71 ✓

COMPONENT DRG. NO. 6P11-6-18
 PLATE RIBBED GUIDE SLIDE

MATERIAL FOR INDIA IS: 5517-1993 DESIGN. 42C4 Mo2 LRS 38 mm

BS 970 PT. 1: 1983 GR. 530 M-40 (BS 970 : 1955 EN-18)
 OR
 BS 970 PT. 1: 1983 GR. 709 M-40 (BS 970: 1955 EN-19)
 OR
 BS 970 PT. 1: 1983 GR. 708 M-40 (BS 970: 1955 EN-19 A)

D	06/17 DA 01/09/17 MATERIAL AMENDED	<i>[Signature]</i>
C	DIMS. 8-6+11, 5-5+11, R 3 & R10 DELETED VIEW CORRECTED DA: 11/95 DE 17, 8-95	<i>[Signature]</i>
B	ALTERNATE MATL. 'EN' SERIES ADDED	<i>[Signature]</i>
AMENDMENTS	DESCRIPTION/DETAILS	SIG & DATE

DRAWING PROVISIONAL DS. CAT NO. 1005007439

DE/1,2

1	2	3	4	5	6	7	8
<i>Sachin</i> 25/10/17	<i>[Signature]</i>	11.87	<i>[Signature]</i> 4.11.18	<i>[Signature]</i>	ORDNANCE FACTORY, TIRUCHIRAPALLI-16.	DRG. NO: 62 C 6018 200 D 3	
REDRAWN	CHECKED	APPROVED	I/C. D&DO	DIV. OFFICER			