

1. BLUNT SHARP EDGES.
2. ACCOMPLISH DIMENSIONS AS PER 7TH CLASS OF ACCURACY GOST 1010. NO DEVIATION.
3. UNSPECIFIED RADII R1 MAX.
4. MATERIAL SUBSTITUTE STEEL IS GOST 1050-74.

NOTE :-

1. ALL DIMENSIONS ARE IN MM.
2. THE ABBREVIATIONS AND SYMBOLS ARE BASED ON RUSSIAN SPECIFICATIONS.

STEEL 20, GOST 1050-74

ORGL MATERIAL:-

DC(I)No. & DATE ISSUE

AMENDMENTS

ALL SHARP EDGES & CORNERS TO BE ROUNDED OFF

ALL THREADS TO CONFORM TO SPECIFICATION

STAMP OR ETCH, PART No. MANUFACTURER'S NAME & YEAR OF MFR.

DRG. NOT TO BE SCALED

SCALE: 2:1

TOLERANCE ON DIMENSIONS UNLESS OTHERWISE SPECIFIED

USED ON: 678-71-Sb12

DATE: 19 APR 94

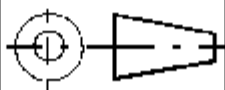
DRN. *SPROB* WT :- (Kg)

TCD. 0.055

773-71-3

CHD *Chim*

APPD *Bot*

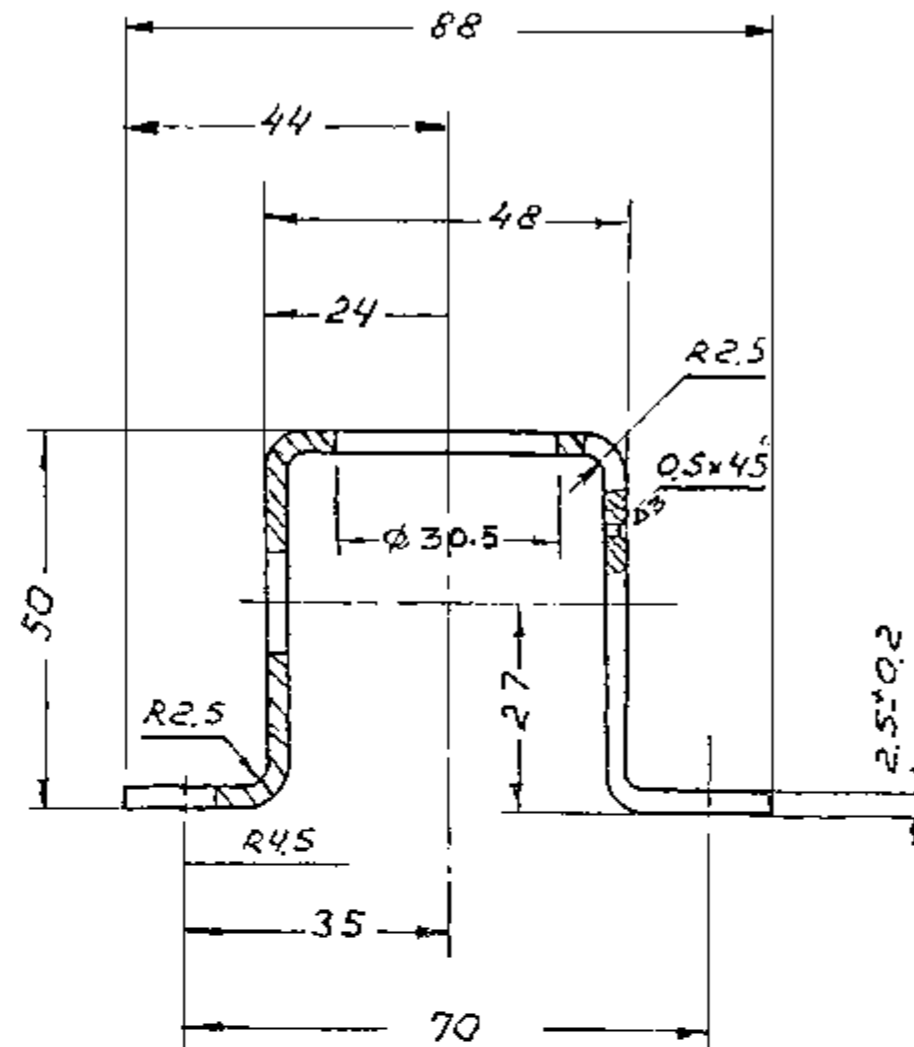
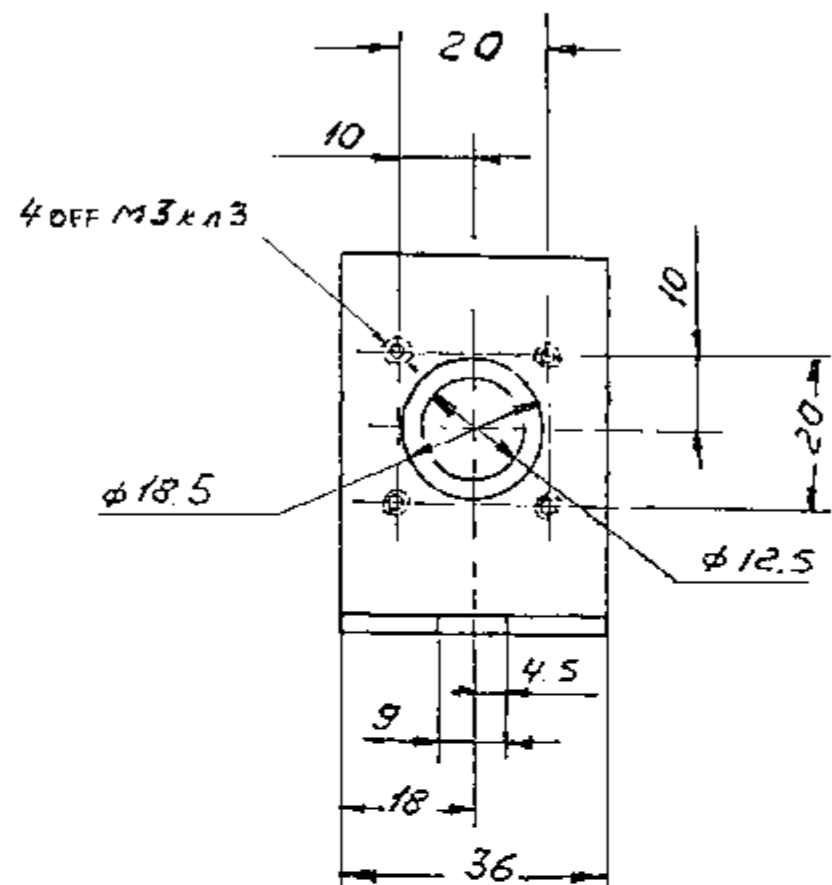


SUPPORT

DS CAT No.

**CONTROLLERATE OF QUALITY ASSURANCE
(INFANTRY COMBAT VEHICLES)**

773-71-4



TECHNICAL CONDITIONS

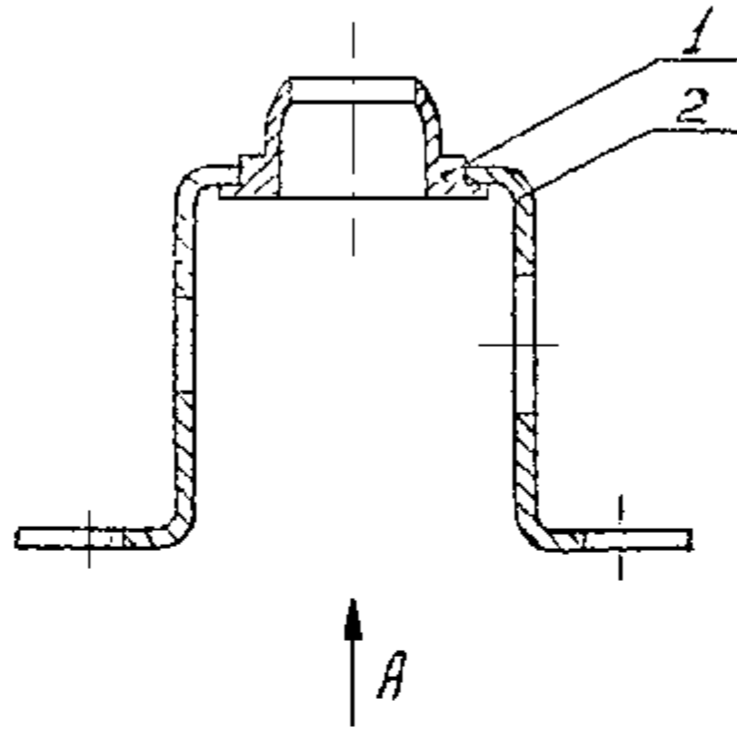
1. BURRS ARE NOT ALLOWED.
2. CARRY OUT DIMENSIONS WITH AN ACCURACY OF ± 0.5 NO DEVIATIONS.
3. SHIFT OF HOLES AXIS AGAINST RATED POSITION - 0.3 MAX.
4. MATERIAL SUBSTITUTE - STEEL 08 Kn, 10 Kn GOST 1050-74.

NOTE:-
THE ABBREVIATIONS AND SYMBOLS ARE
BASED ON RUSSIAN SPECIFICATIONS.

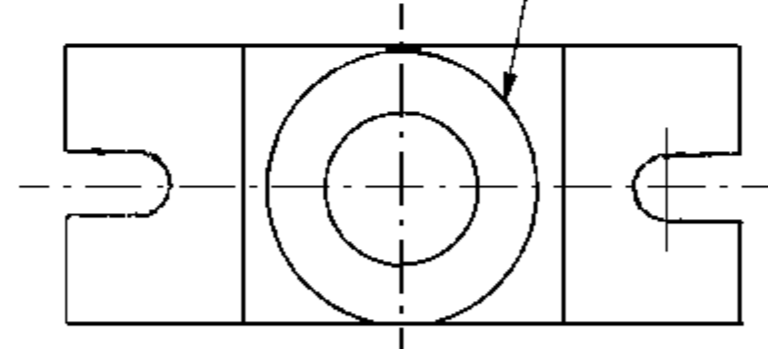
ALL DIMENSIONS ARE IN mm.

NEAREST EQ. MATERIAL			
STEEL 10, GOST 1050-74			
ORGL MATERIAL:-		DC(I)No. & DATE	ISSUE
ALL SHARP EDGES & CORNERS TO BE ROUNDED OFF		AMENDMENTS	
DRG. NOT TO BE SCALED		STAMP OR ETCH, PART No. MANUFACTURER'S NAME & YEAR OF MFR.	
SCALE: 1:1		USED ON: 773-71-Sb103	
DATE: 19 APR 94		TOLERANCE ON DIMENSIONS UNLESS OTHERWISE SPECIFIED	
DRN. Jeyse	WT :- (Kg) 0.08	773-71-4	
TCD.			
CHD APPD		DS CAT No.	
BRACKET			
CONTROLLERATE OF QUALITY ASSURANCE (INFANTRY COMBAT VEHICLES)			

773-71-Sb103Sb



GOST 14771-76 T1-D1,5-8/20



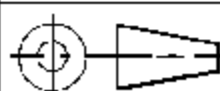
VIEW - 'A'

NOTE:-
THE ABBRIVATIONS AND SYMBOLS ARE
BASED ON RUSSIAN SPECIFICATIONS.

ALL DIMENSIONS ARE IN mm.

TECHNICAL CONDITIONS

1. COATING: FINE PLATING 9 MICRONS THICK, CHROMATIZED.
2. AFTER COATING PRIME ALL SURFACES EXCEPT SPHERICAL, WITH PRIMER ФМ-03K GOST 9109-81 AND PAINT WITH ENAMEL: ПЭ-223 WHITE 1 GOST 14 923-T8.

NEAREST EQ. MATERIAL			
ORGL MATERIAL:-		DC(I) No. & DATE	ISSUE
ALL SHARP EDGES & CORNERS TO BE ROUNDED OFF	ALL THREADS TO CONFORM TO SPECIFICATION	STAMP OR ETCH, PART No. MANUFACTURER'S NAME & YEAR OF MFR.	
DRG. NOT TO BE SCALED	SCALE: 1:1	TOLERANCE ON DIMENSIONS UNLESS OTHERWISE SPECIFIED	USED ON: 773-82-Sb106
DATE: 19APR 94	DRN. <i>Jegga</i>	WT :- (Kg) 0.14	773-71-Sb103Sb
CHD APPD <i>Bob</i>	TCD.		
<p>BRACKET</p> <p>CONTROLLERATE OF QUALITY ASSURANCE (INFANTRY COMBAT VEHICLES)</p>			