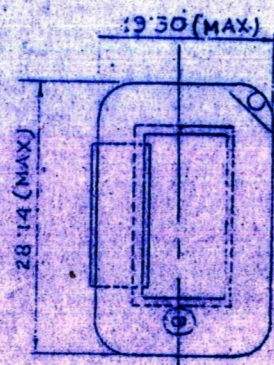
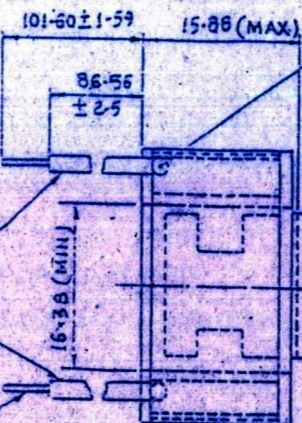


9.52 LENGTH OF SLEEVE 16' TO BE WRAPPED UNDER TAPE 3



FIBRE GLASS SLEEVE VARNISHED
.61 I/D x 93.66 LONG TO SPECN.
BS 2488/73 TYPE 1



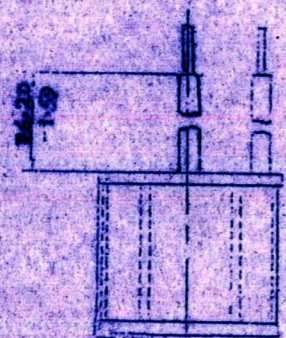
REMOVE INSULATION FROM WIRES & TIN

FIBRE GLASS TAPE UNVARNISHED WHITE
171.45x12.70x0.18 TO SPEC. IS:5352/1969

FIBRE GLASS TAPE UNVARNISHED WHITE
5.80x12.70x0.18 TO SPEC. IS:5352/1969

WINDING WIRE TEREPHTHALATE POLESTER
BASE ENAMELED, FINE COVERING TO JSS
54700, 0.56mm RESISTANCE 72 OHMS/Km
AT 20 C

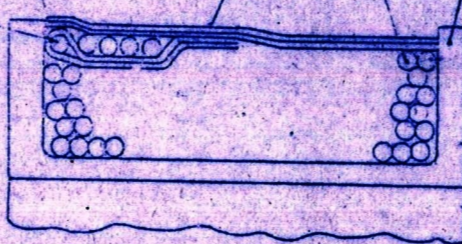
TIN IN DIMENSIONS FROM COIL



CQA(I)393/35

CQA(I)393/34

FINISH



ENLARGED SECTION SHOWING FINISH LEAD

SHIM TO BE ASSEMBLED BETWEEN 1st & 2nd WRAP OF TAPE ITEM 3

TREATMENT:-

BRUSH ON VARNISH TO SPEC. T.S.191 C (EXCEPT TINNED WIRES & INTERIOR OF RECTANGULAR HOLE) TREATMENT TO INCLUDE SLEEVING.

| | |
|------------------|--------------------|
| WIRE SIZE | 24 SWG. |
| TOTAL TURNS | 120-126 |
| TURNS PER LAYER | 20-21 |
| LAYERS | 6 |
| WINDING | LAYER WOUND |
| LAYER INSULATION | NONE |
| RESISTANCE 20 C | .7Ω ± .05Ω |
| MASS OF WIRE | .023 KG. (APPROX.) |

WINDING ARMATURE

| AMENDMENTS | CHD | SIG | DATE |
|---|-----|-----|---------|
| D.C.-5767-I REDUCED & UPDATED DRG. SEALED IN SUPERSESSION OF IUX-27 SA. | | | 27-9-93 |

FOR EXPLANATION OF DIMENSIONING ETC, SEE CQA(I) GUIDE No 001-1992. THIRD ANGLE PROJECTION DIMENSIONS ARE IN mm

| | |
|-----|---------------|
| DRN | APPROVED |
| TCD | FOR |
| CHD | CONTROLLER |
| CHD | CQA (I) J.L.M |
| | DATE - 6-9-93 |

MATL & SPEC:-

| | |
|-----------|----------------|
| USED ON | |
| BASED ON | IUX-27 SA |
| CAT/PT No | 2920-002194 |
| DRG No | CQA(I)393/SA-4 |

FINISH & SPEC:-

SCALE: 1 SH OF

CHECKED

FOR QM

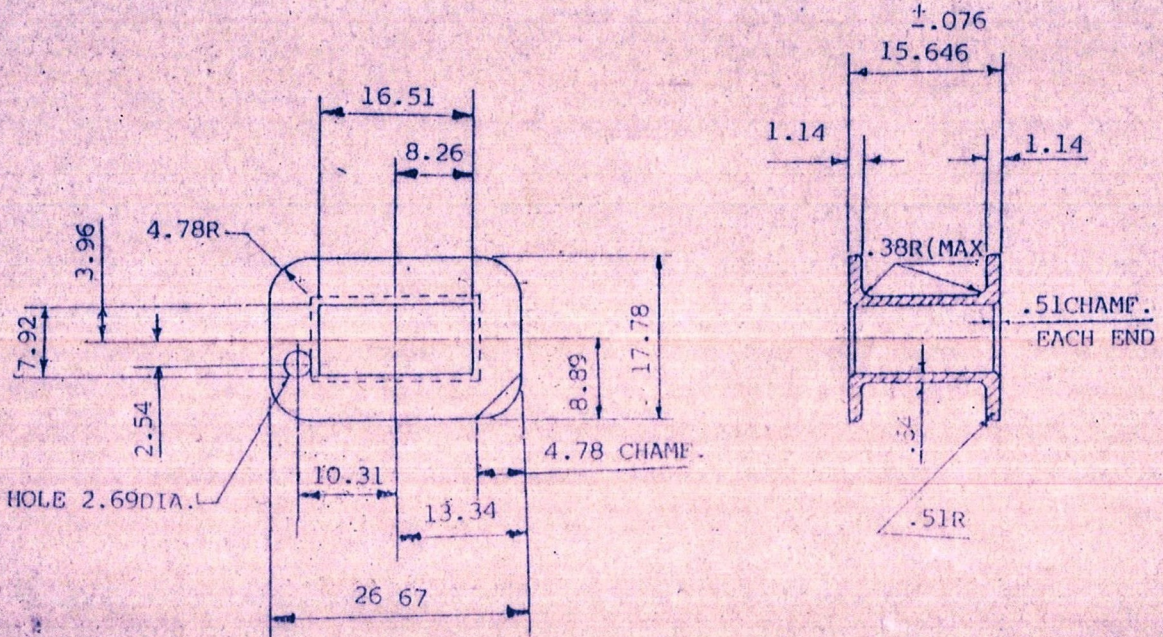
D.C. (I) :- 5571-I, 5604-I, 5767-I

REDUCED DRG. PREPARED BY CQA(I) ESTERA DUN

DATE:

CHECKED BY: *Subhash Chandra*

FOR EXPLANATION OF DIMENSIONING ETC, SEE CQA(I)GUIDE No.001-1992
 THIRD ANGLE PROJECTION DIMENSIONS ARE IN mm



△ ALL OVER

UNMOL. DIM. ±.13

* COLOUR NOT IMPORTANT

MUST BE FREE OF FLASH & BURRS.

7.92 & 16.51 DIMS ARE AT CENTRE OF BOBBIN LENGTH. A TOTAL TAPER OF .152 IS PERMISSIBLE OVER 15.646 LENGTH.

CLEAR POLYSTYRENE TO BS 1493 X ALTERNATIVELY POLYSTYRENE IS:7078:1973"
 ESTIMATED MASS:-1.59 g.

D.C.(I):-5571-I,5604-I,5767-I.

CHECKED

FOR QM

REDUCED DRG. PREPARED BY CQA(I) DEBRA DUN

PREPARED BY: *gmb*

CHECKED BY: *Srijal* DATE:

D.C.-5767-I. REDUCED & UPDATED DRG. SEALED IN SUPERSESSION OF IUX-630.

27-9-93

DRN
 TCD
 CHD
 CHD
 APPROVED FOR CONTROLLER CQA(I)D. DUN
 DATE: 6.9.93

SYMB AMENDMENTS CHD SIG DATE ON

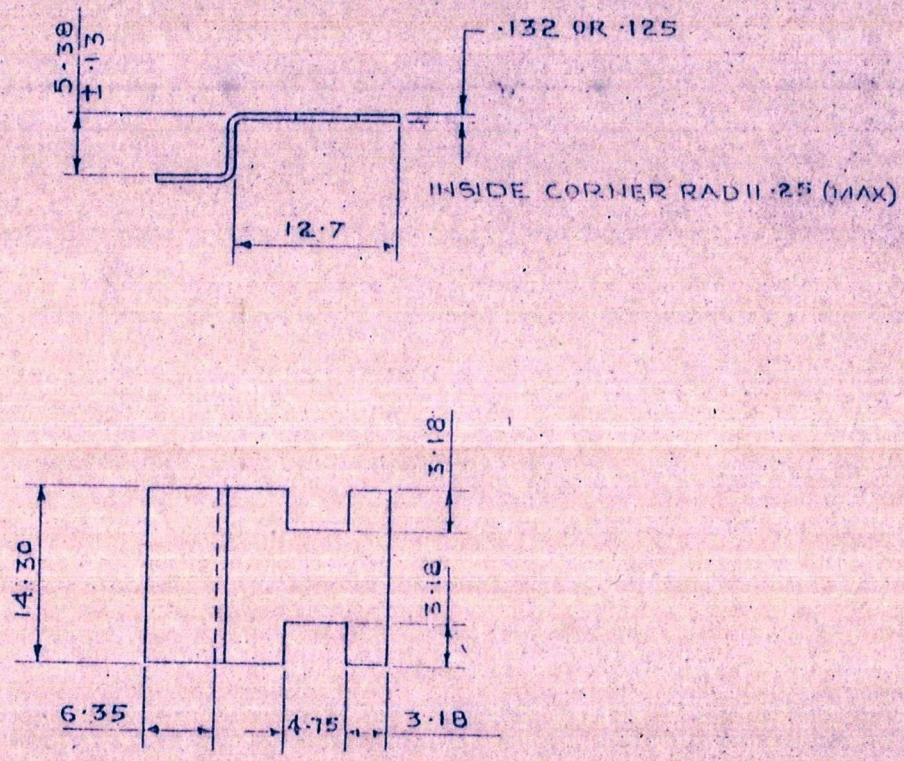
MATL & SPEC AS ABOVE

FINISH & SPEC

TITLE:- BOBBIN, COIL

BASED ON IUX-630
 CAT/PT No. 5950-007529
 DRG No. CQA(I)393/34
 SCALE : SH OF

FOR EXPLANATION OF DIMENSIONING ETC., SEE CQA(I) GUIDE No. 001-1992
 THIRD ANGLE PROJECTION DIMENSIONS ARE IN mm



UNTOL. DIMENSIONS ±.25

▽ ALL OVER

D.C.(I)-557I-I, 5604-I, 5767-I.

CHECKED
FOR QM

REDUCED DRG. PREPARED AT CQA(I) DEHRA DUN
 PREPARED BY : SUNIL NANDA
 CHECKED BY : *Sy... ..* DATE:

| | | | | | |
|--|--|-----|-----|----------|------------------------|
| | | | | DRN | APPROVED |
| | | | | TCD | FOR <i>[Signature]</i> |
| | | | | CHD | CONTROLLER |
| | | | | CHD | CQA(I) D. DUN |
| | | | | USED | DATE: 6-9-93 |
| D.C.-5767-I. REDUCED & UPDATED DRG. SEALED IN SUPERSESSON OF IUX-631. | | | | 27-9-93. | |
| SYMB | AMENDMENTS | CHD | SIG | DATE | ON |
| MATL & SPEC | BRASS BS 2870:1980 CZ 107 HARD ALTERNATIVELY IS: 410-1977 CUZn 40 | | | | BASED ON IUX 631 |
| FINISH & SPEC | CLEAN MUST BE FREE OF BURRS. | | | | CAT/PT No. 5365-009698 |
| TITLE:- SHIM | | | | DRG No. | CQA(I)-393/35 |
| | | | | SCALE | : SH OF |