

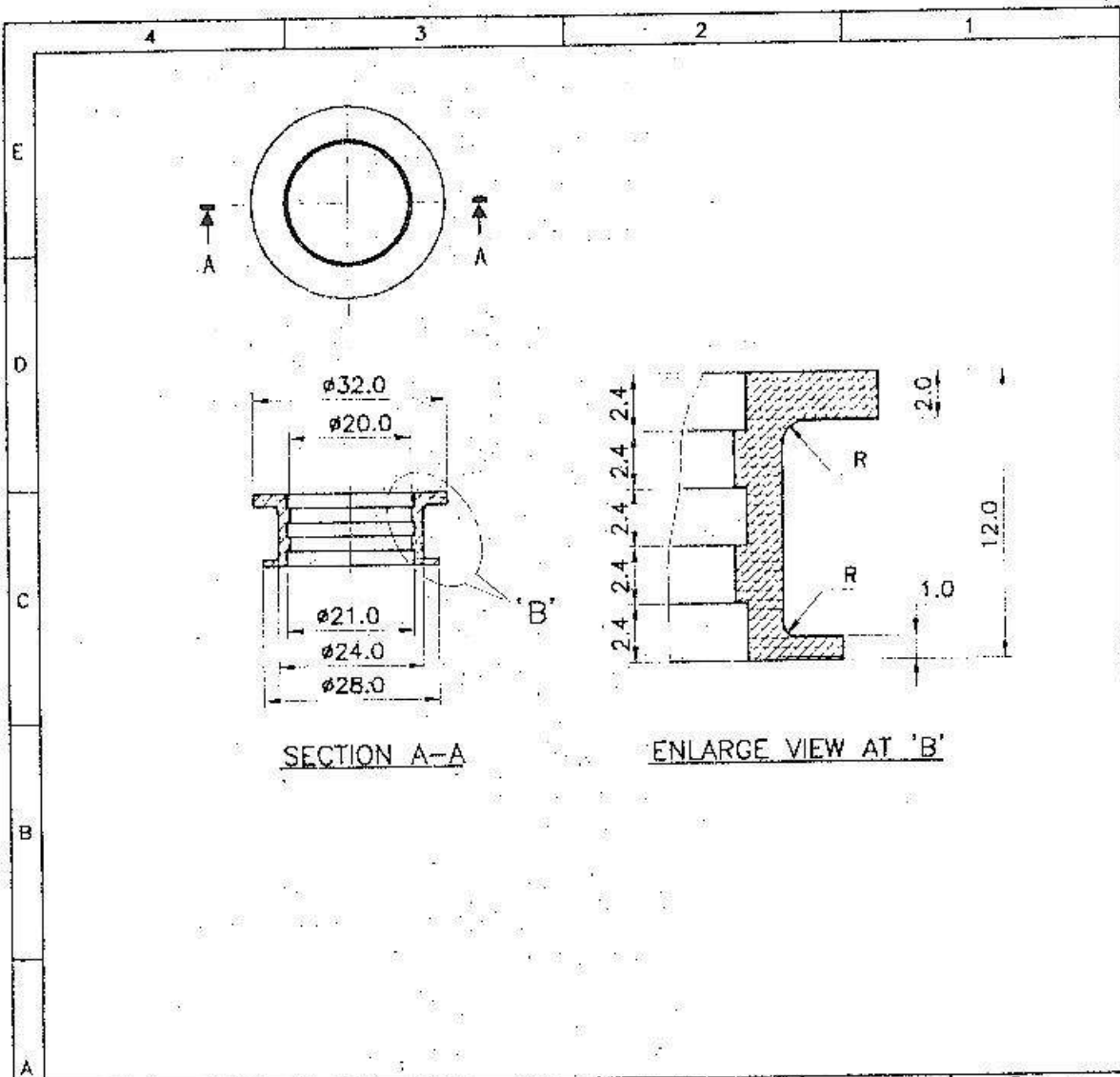
MATL.:- STEEL  
MATL. SPEC.:- IS: 1570 Gr. C-20  
PROTECTIVE FINISH:- CADMIUM COATING TO SPEC: IS: 1572-68  
 CLASS: cd-12

07-04-03		PROVISIONALLY SEALED BY DGNAI			[Signature]	
01-02-03		APPROVED				
R.No	DATE	ZONE	BRIEF RECORD		AUTHORITY	INITIALS
SCALE : 1:2		TOL	DIMENSIONS ARE IN mm		ASSY DRG No.	
DGN	DRN	TCD	COMP.	CHD	NAI(MB) 9154/4 (P)	
PASSED :		APPROVED		CONTROLLERATE OF NAVAL ARMAMENT INSPECTION MUMBAI		
MATL : SEE DRG.		GEN SPEC: NA SPEC A 31B				
MATL SPEC : SEE DRG.		STORE REF No.:				
PROTECTIVE FINISH : SEE DRG.						
<h1>STAND</h1> <p>(PIECE HOLDING BOTTOM PLATE)</p>						
					DRG No. NAI(MB) 9154/4/3 (PROVISIONAL)	

A4

USED ON: BOX 30 mm CTGES AK 630  
 END USE.

BASED ON : SAMPLE



SECTION A-A

ENLARGE VIEW AT 'B'

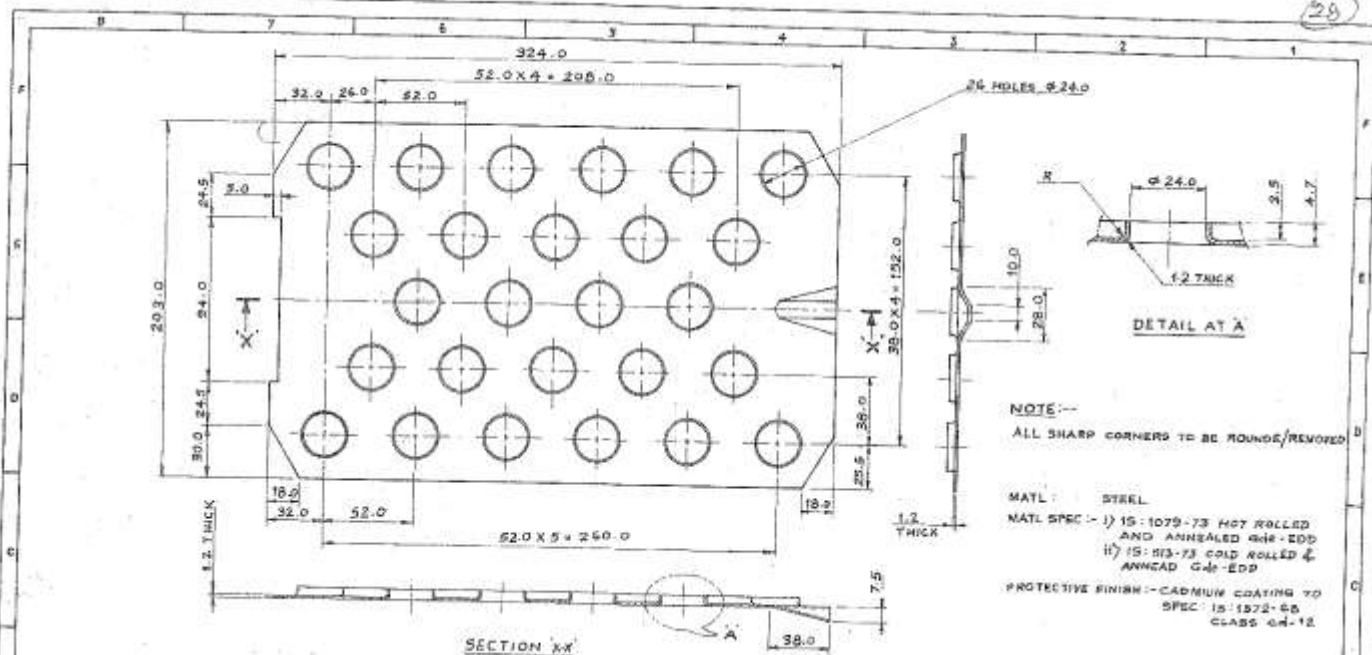
TRIM ON THIS LINE WHEN SUPPLY TO TRADE

07-04-03		PROVISIONALLY SEALED BY DUNAI		<i>[Signature]</i>	
01-02-03		APPROVED			
R.No	DATE	ZONE	BRIEF RECORD	AUTHORITY	INITIALS
SCALE : 1:1		TOL	DIMENSIONS ARE IN mm	ASSY DRG No.	
DGN	DRN	Wg	TCD	COMP	CHD
PASSED : <i>[Signature]</i>			APPROVED : <i>[Signature]</i>		CONTROLLERATE OF NAVAL ARMAMENT INSPECTION MUMBAI
MATL : LDPE			GEN SPEC: NA SPEC A 31B		
MATL SPEC : GCB			STORE REF No.:		
PROTECTIVE FINISH : ✓					
<b>SLEEVE - II</b>					
				DRG No. <b>NAI(MB) 9154/4/2</b> (PROVISIONAL)	

A4

USED ON : BOX 30 mm CTGES AK630  
 END USE

BASED ON : SAMPLE



SCALE: 1:1		TOL:		DIMENSIONS ARE IN mm	
DGN: DRN		ICD:		COMP: [Signatures]	
07-04-03		PROVISIONALLY SEALED BY DGN/NAI		APPROVED: [Signatures]	
01-02-03		APPROVED: [Signature]		GEN SPEC: NA SPEC A 51B	
R.No	DATE	ZONE	BREF RECORD	AUTHORITY	SERIALS
			MATERIAL SPEC:		
			PROTECTIVE FINISH:		
			STORE REF No.:		

ASSY DRG No. NAI(MB) 3154/4 (P)

CONTROLLERATE OF NAVAL ARMAMENT INSPECTION MUMBAI

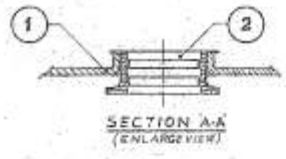
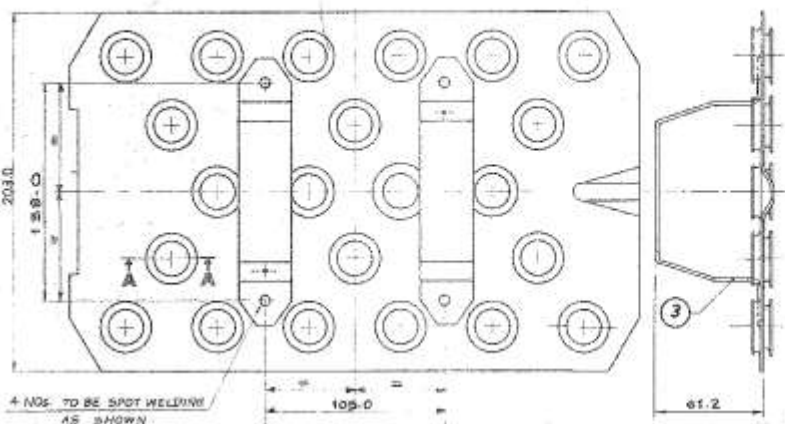
DRG No. NAI(MB) 3154/4/1 (PROVISIONAL)

PIECE HOLDING BOTTOM PLATE

USED ON: BOX 30 mm CTGE AK 630  
END USE:

BASED ON: SAMPLE

TICK ON THIS LINE WHEN SUPPLY TO TENDR



SCHEDULE OF COMPONENTS				
Sl. No	NOMENCLATURE	ORG. No.	QTY	REMARKS
1	PIECE HOLDING BOTTOM PLATE	NAI(MB) 9154/4/1/1	01	
2	SLEEVE -II	NAI(MB) 9154/4/2/1	28	
3	STAND	NAI(MB) 9154/4/3/1	02	

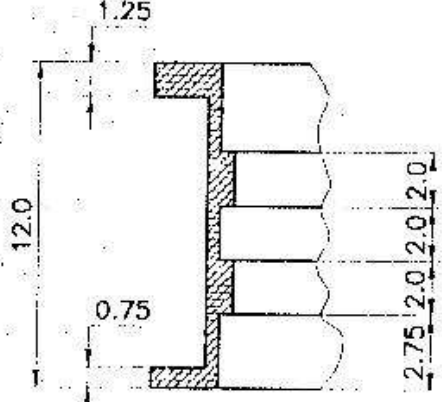
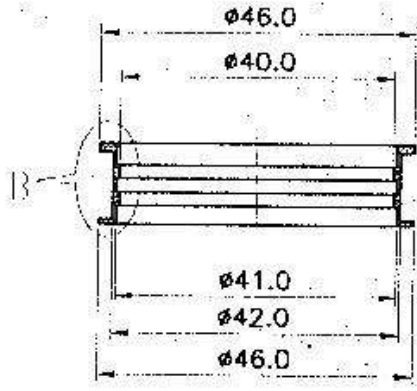
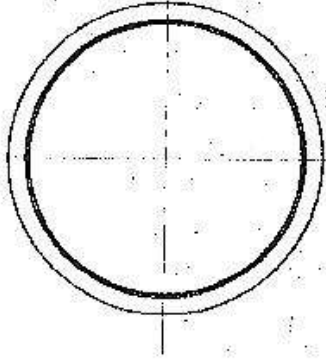
TRIM ON THIS LINE WHEN SUPPLY TO TRADE

SCALE: N/S		TOL:		DIMENSIONS ARE IN mm		ASSY DRG No.	
DGN		DRN		TCD		COMP	
07-04-05		PROVISIONALLY SEALED BY NAI		APPROVED		NAI (MB) 9154 (P)	
01-02-03		APPROVED		GEN SPEC : NA SPEC A 315		CONTROLLERATE OF NAVAL ARMAMENT INSPECTION	
BRIEF RECORD		AUTHORITY		STORE REF No:		MUMBAI	
N.No		DATE		ZONE		DRG No.	
						NAI(MB) 9154/4	
						(PROVISIONAL)	

PIECE HOLDING BOTTOM PLATE ASSY

USED ON : BOX 32 PAK 0206 AKG30  
END USE

BASED ON : SAMPLE

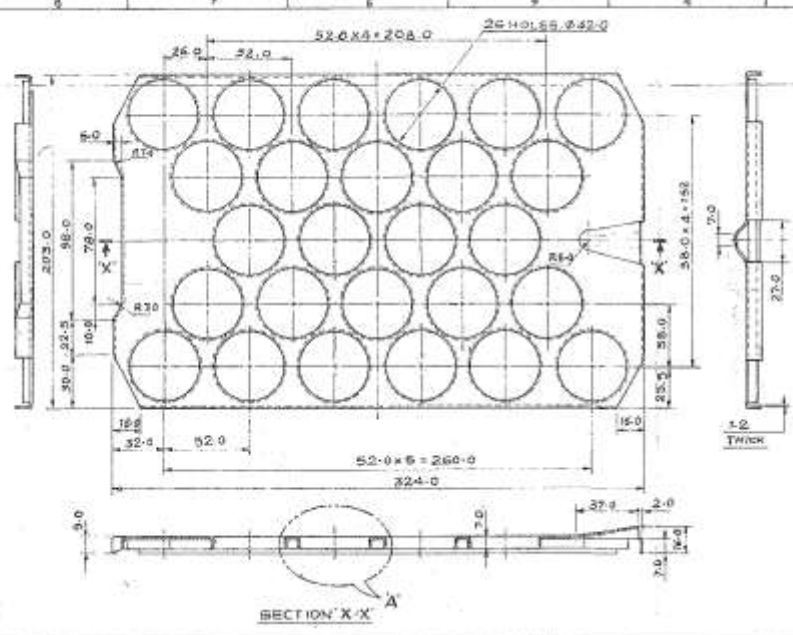


SECTION A-A

ENLARGE VIEW AT 'B'

07-04-03		PROVISIONALLY SEALED BY DGNAI		DGNAI	
01-02-03		APPROVED			
R.No	DATE	ZONE	BRIEF RECORD	AUTHORITY	INITIALS
SCALE : 1:1		TOL	DIMENSIONS ARE IN mm		ASSY DRG No.
DGN	DRN	TCD	COMP	CHD	NAI(MB) 9154/3 (P)
PASSED :		APPROVED		CONTROLLERATE OF NAVAL ARMAMENT INSPECTION MUMBAI	
MATL : LDPE		GEN SPEC: NA SPEC A 31B			
MATL SPEC : GCR		STORE REF No.:			
PROTECTIVE FINISH : -					
<h1>SLEEVE - I</h1>					
				DRG No. <b>NAI(MB) 9154/3/2</b> (PROVISIONAL)	

TRIM ON THIS LINE WHEN SUPPLY TO TRADE



NOTE -  
ALL SHARP CORNERS TO BE ROUNDED/REMOVED

MATL: STEEL  
 MATL SPEC: (i) 16:1079-73 HOT ROLLED AND ANNEALED Q&K-800  
 (ii) 18:515-73 COLD ROLLED AND ANNEALED Q&K-800  
 PROTECTIVE FINISH: CADMIUM COATING TO SPEC: IS:1572-66 CLASS: 40-12

WMM ON THIS LINE WHEN SUPPLY TO TRADE

SCALE 1:2		TOL		DIMENSIONS ARE IN MM	
DDN	DRN	APPROVED	COMP	CHD	CHK
PROVISIONAL DRAWING BY 84NAI		APPROVED		A/CHAI	
R. No.	DATE	ZONE	BRIEF RECORD	AUTHORITY	INITIALS

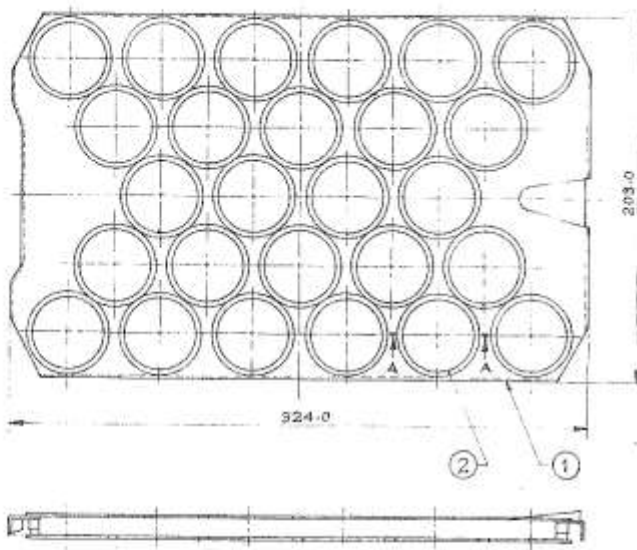
ASSY DRG No. NAI(MB) 9154/3 (P)  
 CONTROLLERATE OF NAVAL ARMAMENT INSPECTION MUMBAI

**PIECE HOLDING TOP PLATE**

DRAWING No. NAI(MB) 9154/3/1 (PROVISIONAL)

END USE:  
 USED ON: BOX 30 MM CTGES AK 430

BASED ON: SAMPLE



SCHEDULE OF COMPONENTS				
SL. NO.	NOMENCLATURE	DRG. No.	QTY	REMARKS
1	PIECE HOLDING TOP PLATE	NAI(MB)9154/3/1(P)	1	
2	SLEEVE - I	NAI(MB)9154/3/2(P)	26	

SCALE 1:2		TOL		DIMENSIONS ARE IN MM		ASSY DRG NO.	
DRN	DRN	DRN	TCD	COMP	ICHD	ICHD	NAI(MB)9154 (P)
DRAFTER				APPROVED			
07-04-03	PROVISIONALLY SEALED BY JG/AT			APPROVED			
01-02-03	APPROVED			APPROVED			
R. No.	DATE	ZONE	BRIEF RECORD	AUTHORITY	INITIALS	MATL SPEC	GEN SPEC: NA SPEC A 31 B
							STORE REF No.

CONTROLLERATE OF NAVAL  
ARMAMENT INSPECTION  
MUMBAI

PIECE HOLDING TOP PLATE ASSY



DRAWING NO.  
NAI MB 9154/3  
(PROVISIONAL)

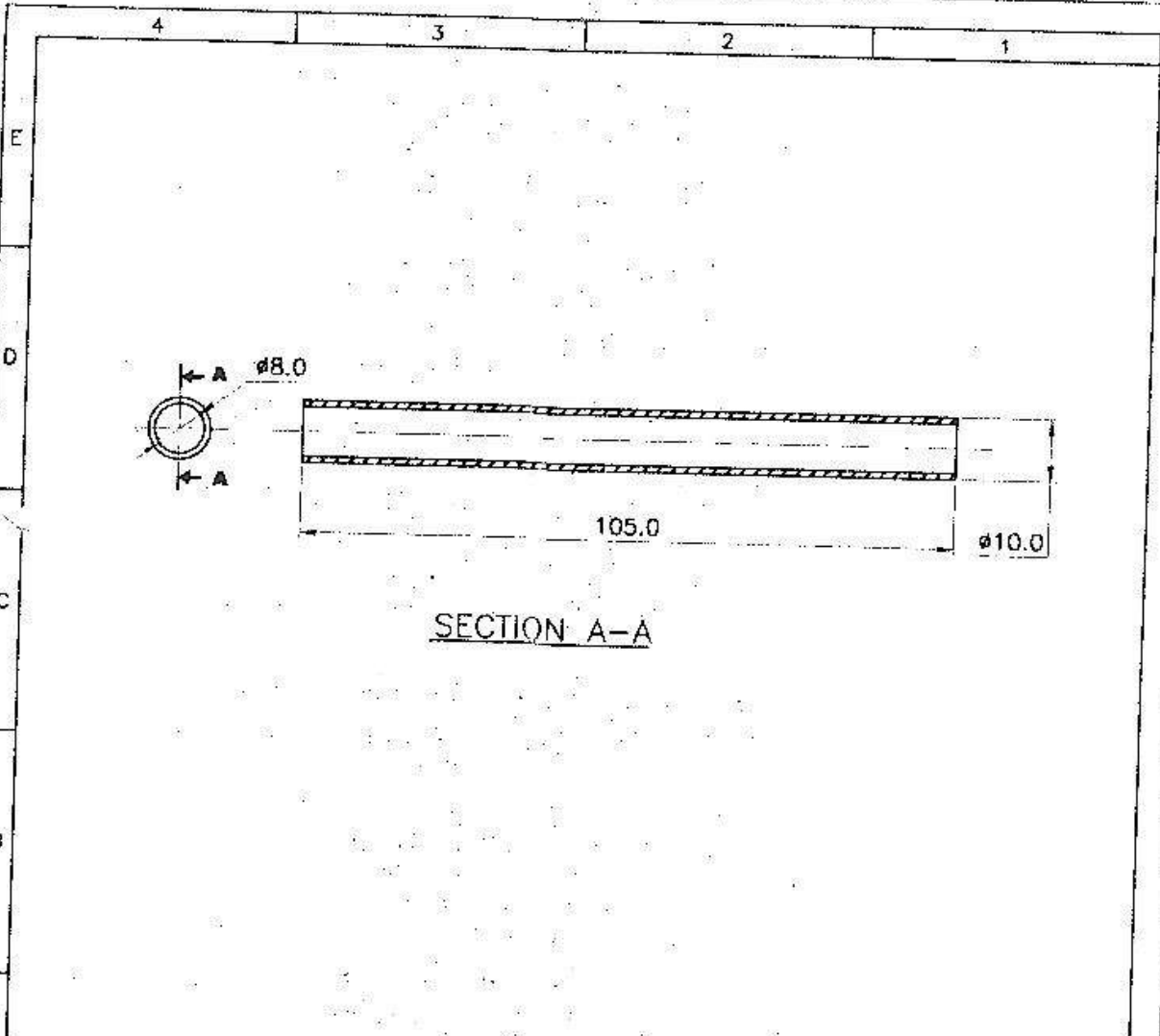
USED ON: Box 30 mm CTGS AK 630

BASED ON: SAMPLE

PLEASE CONFORM TO THE DRAWING WITHIN THE LIMITS OF THE DRAWING TO THE TRADE







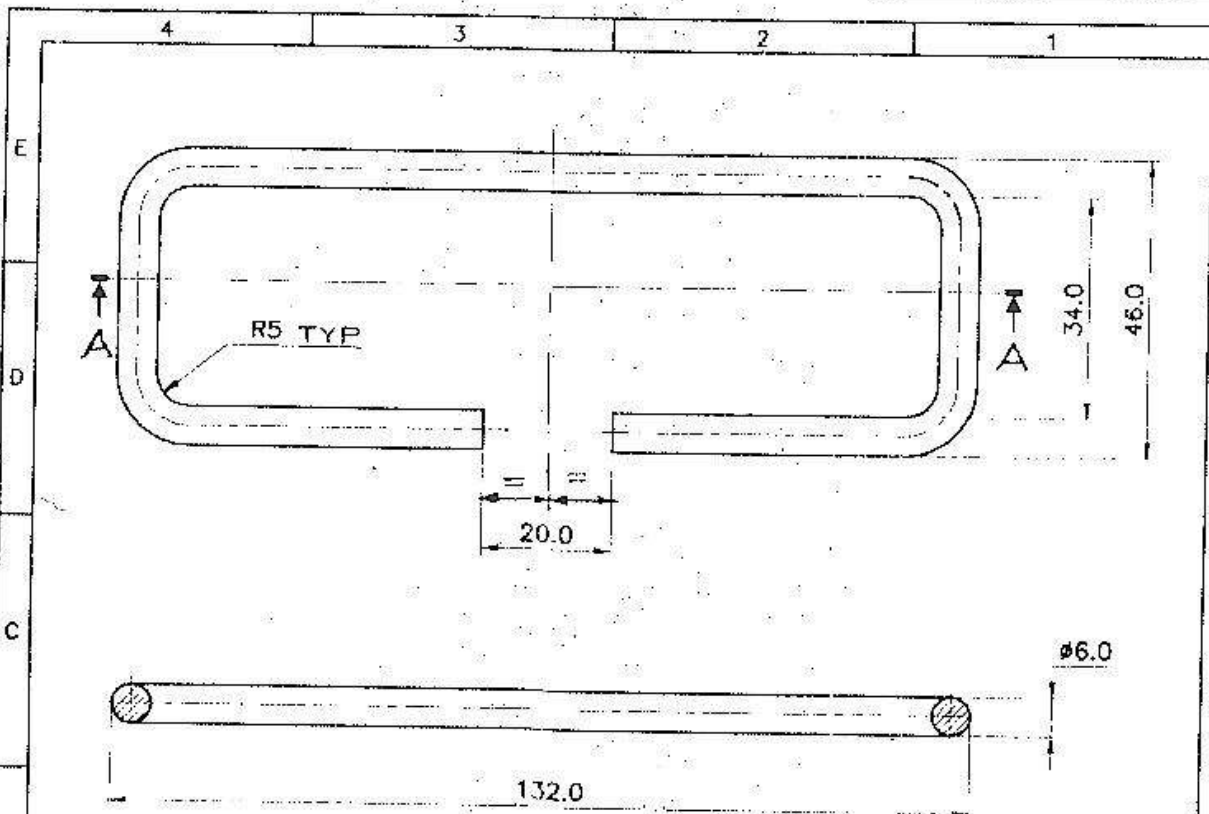
SECTION A-A

PROTECTIVE FINISH :- CADMIUM COATING TO SPEC : IS : 1572-68 CLASS Gd. 12

07-04-03		PROVISIONALLY SEALED BY DGNAL			
01-02-03		APPROVED			
R.No	DATE	ZONE	BRIEF RECORD	AUTHORITY	INITIALS
SCALE : 1 : 1		TOL	DIMENSIONS ARE IN mm		
DGN	DRN <i>Hand</i>	TCD	COMP <i>(H)</i>	CHD <i>Hand</i>	ASSY DRG No. NAI(MB) 9154/2/11 (P)
PASSED :		APPROVED <i>Hand</i> CD		CONTROLLERATE OF NAVAL ARMAMENT INSPECTION MUMBAI	
MATL : STEEL		GEN SPEC: NA SPEC A 31B			
MATL SPEC - G C Q		STORE REF No.:			
PROTECTIVE FINISH SEE ABOVE					
TUBE FOR HANDLE					
					DRG No. NAI(MB) 9154/2/11/2 (PROVISIONAL)

USED ON : BOX 30 mm CTGES AK G30  
END USE : HANDLE ASSY

BASED ON : SAMPLE



MATL SPEC : IS : 1570 GRADE C-45  
 PROTECTIVE FINISH :- CADMIUM COATING TO SPEC : IS : 1572-68 CLASS Cd. 12

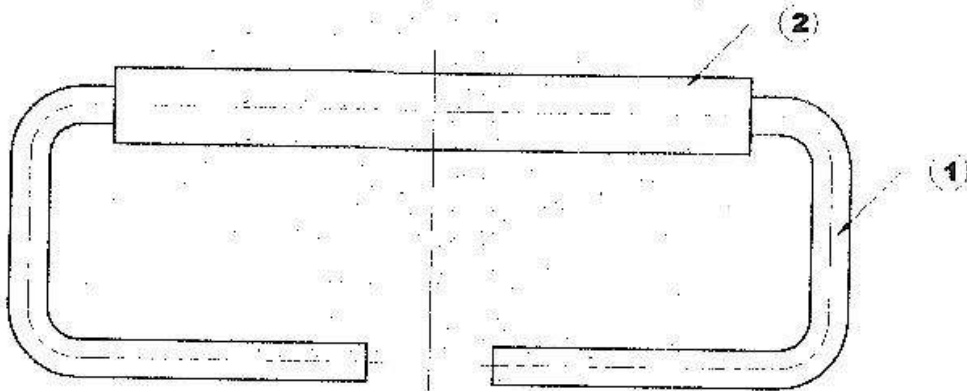
	07-04-03		PROVISIONALLY SEALED BY DGNAI		
	01-02-03		APPROVED		<i>[Signature]</i>
R.No	DATE	ZONE	BRIEF RECORD	AUTHORITY	INITIALS
SCALE : 1 : 1	TOL		DIMENSIONS ARE IN mm	ASSY DRG No.	
DGN	DRN <i>[Signature]</i>	TCD	COMP <i>[Signature]</i>	CHD <i>[Signature]</i>	NAI(MB) 9154/2/11(P)
PASSED :	<i>[Signature]</i> CD	APPROVED	<i>[Signature]</i> CNAI	CONTROLLERATE OF NAVAL ARMAMENT INSPECTION MUMBAI	
MATL :	STEEL	GEN SPEC: NA SPEC A 31B			
MATL SPEC :	SEE ABOVE	STORE REF No.:			
PROTECTIVE FINISH	SEE ABOVE				
<b>HANDLE</b>					
				DRG No. NAI(MB) 9154/2/11/1 (PROVISIONAL)	

USED ON : BOX 30 mm CTGES AK630  
 END USE : HANDLE ASSY

BASED ON : SAMPLE

**SCHEDULE OF COMPONENTS**

Sl No	NOMENCLATURE	DRG. No.	QTY	REMARKS
1	HANDLE	NAI(MB) 9154/2/11/1	01	
2	TUBE FOR HANDLE	NAI(MB) 9154/2/11/2	01	



**NOTE :-** TUBE FOR HANDLE (DRG NO NAI(MB) 9154/2/11/2) TO BE INSERTED BEFORE BENDING OPERATION OF THE HANDLE.

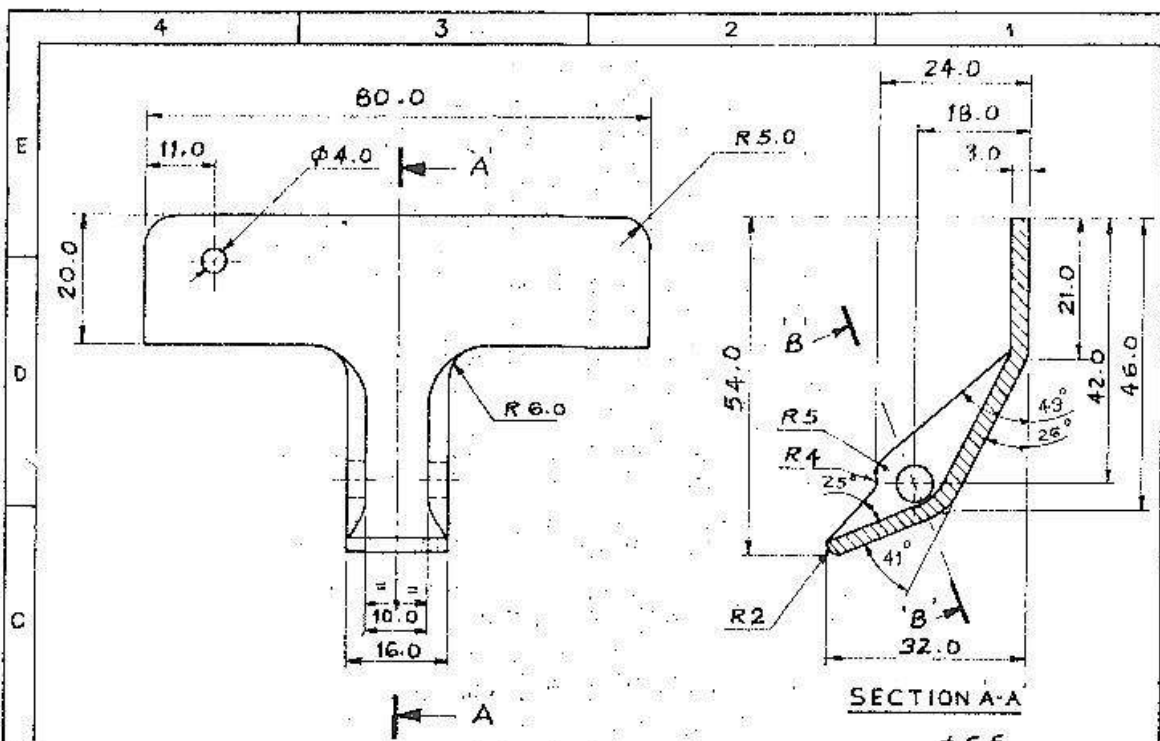
	07-04-03		PROVISIONALLY SEALED BY DGN/NAI		(S)M/CO
	01-02-03		APPROVED		
R.No	DATE	ZONE	BRIEF RECORD	AUTHORITY	INITIALS
SCALE : 1 : 1	TOL	DIMENSIONS ARE IN mm		ASSY DRG No.	
DGN	DRN: <i>Sh</i>	TCD	COMP: <i>MS</i>	CHD: <i>Prasad</i>	NAI(MB) 9154/2 (P)
PASSED :	<i>CD</i>	APPROVED	for CNAI		
MATL :	GEN SPEC: NA SPEC A 31B		CONTROLLERATE OF NAVAL ARMAMENT INSPECTION		
MATL SPEC	STORE REF No.:		MUMBAI		
PROTECTIVE FINISH					
<b>HANDLE ASSY</b>				DRG No.	
				NAI(MB) 9154/2/11 (PROVISIONAL)	

A4

USED ON BOX 30mm CTGES AK630  
END USE : LID ASSY

BASED ON : SAMPLE

TRIM ON THIS LINE WHEN SUPPLY TO TRADE

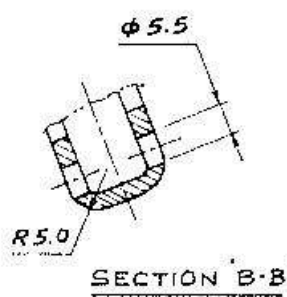


**NOTE:-** ALL SHARP CORNERS TO BE ROUNDED

**MATL:** STEEL

**MATL SPEC:** IS: 1079-73 HOT ROLLED AND ANNEALED GdE EDD

**PROTECTIVE FINISH:** CADMIUM COATING TO SPEC: IS: 1572-68 CLASS Cd-12



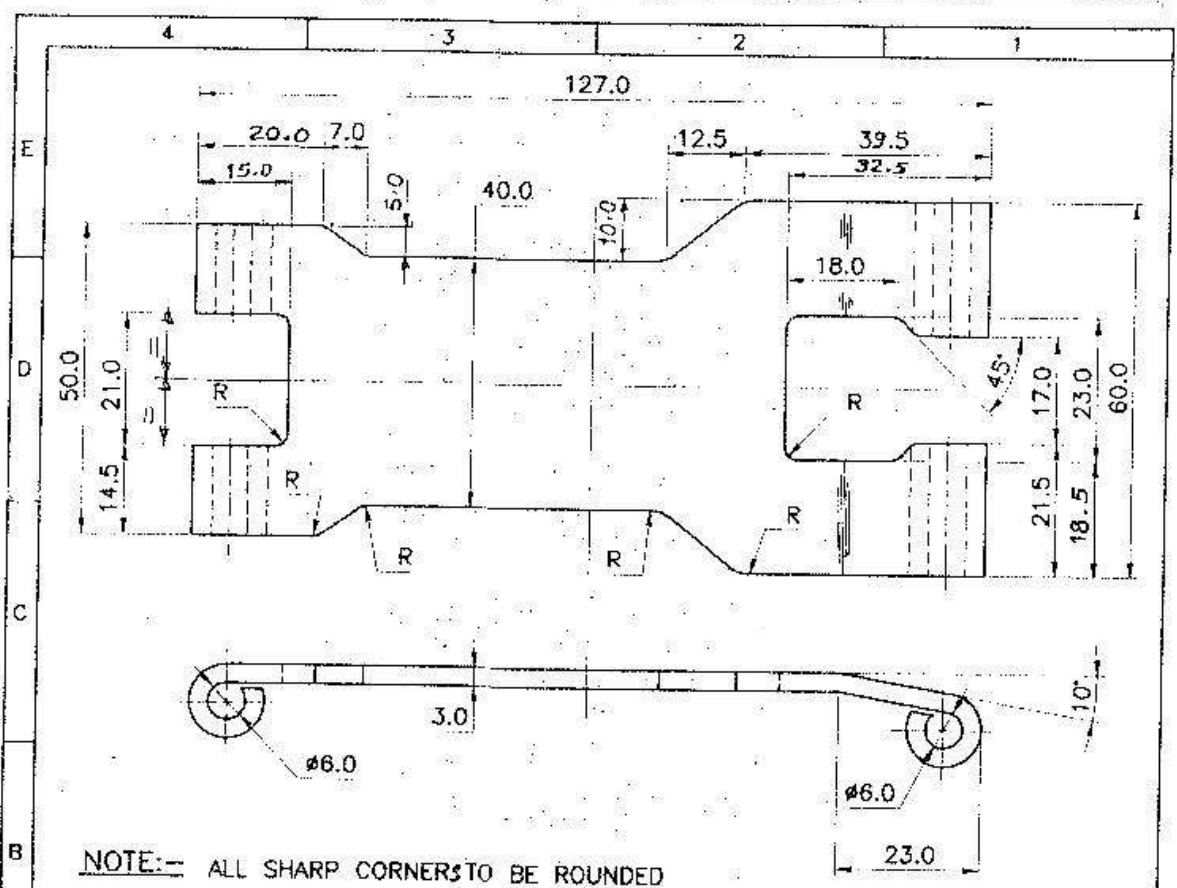
07-04-03		PROVISIONALLY SEALED BY DGNAI		P/PP/CR	
01-02-03		APPROVED			
R.No	DATE	ZONE	BRIEF RECORD	AUTHORITY	INITIALS
SCALE: 1:1	TOL:	DIMENSIONS ARE IN mm		ASSY DRG No.	
DGN:	DRN: <i>RAH</i>	TCD:	COMP: <i>NAI</i>	CHD: <i>...</i>	NAI (MB) 9154/2/10/5
PASSED:		APPROVED		<b>CONTROLLERATE OF NAVAL ARMAMENT INSPECTION MUMBAI</b>	
MATL: SEE DRG		GEN SPEC: NA SPEC A 31B			
MATL SPEC: SEE DRG		STORE REF No.:			
PROTECTIVE FINISH: SEE DRG					
<b>CATCH</b>					
				DRG No. NAI (MB) 9154/2/10/5 (PROVISIONAL)	

A4

USED ON: BOX 30mm CTGES AK 630  
 END USE: CATCH ASSY

BASED ON: SAMPLE

DRAWING LINE WHEN SUPPLY TO TRADE



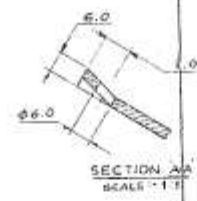
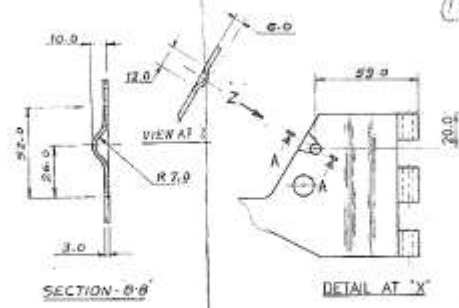
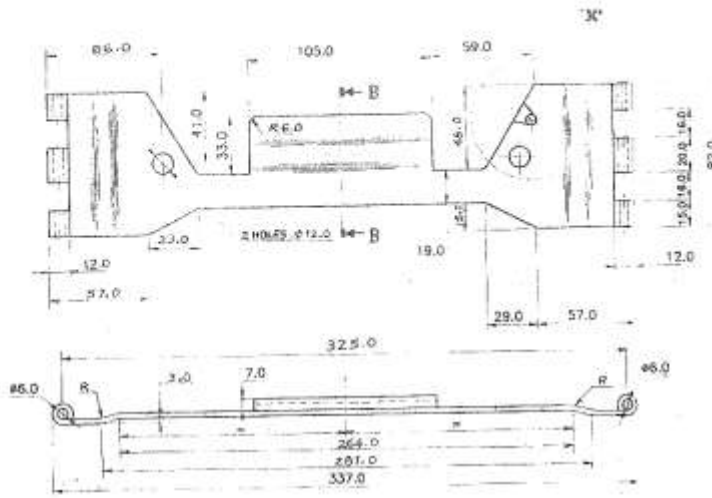
**NOTE:--** ALL SHARP CORNERS TO BE ROUNDED

**MATL SPEC:--** IS:1079-73 HOT ROLLED AND ANNEALED Gd. EDD

**PROTECTIVE FINISH:--** CADMIUM COATING TO SPEC:IS:1572-68 CLASS Cd-12

07-04-03		PROVISIONALLY SEALED BY DGNAI			
01-02-03		APPROVED			
R.No	DATE	ZONE	BRIEF RECORD	AUTHORITY	INITIALS
SCALE :1:1		TOL	DIMENSIONS ARE IN mm		ASSY DRG No.
DGN	DRN	Wg	TCD	COMP	CHD
PASSED :			APPROVED		CONTROLLERATE OF NAVAL ARMAMENT INSPECTION MUMBAI
MATL : STEEL		GEN SPEC: NA SPEC A 31B			
MATL SPEC : AS ABOVE		STORE REF No.:			
PROTECTIVE FINISH : AS ABOVE					
LOCKING PIECE					DRG No. NAI(MB) 9154/2/10/4 (PROVISIONAL)

A4  
 USED ON : BOX 30 mm CTGE AK 630  
 END USE : CATCH ASSY  
 BASED ON : SAMPLE



MATL SPEC:- IS-1078-73 HOT ROLLED AND ANNEALED Gd. EDD  
 PROTECTIVE FINISH:- CADMIUM COATING TO SPECIS:1572-88 CLASS Cd-12

SCALE: 1:2		TOL:		DIMENSIONS ARE IN mm	
DGN	DRW 91/P	TOD	COMP	CHK	CHD
PASSED:			APPROVED:		
MATERIAL: STEEL			GEN SPEC: NA SPEC A 31B		
MATERIAL SPEC: AS ABOVE			STORE REF No.:		
PROTECTIVE FINISH: AS ABOVE					

ASSY DRG No.  
 NAI(MB) 9154/2/10 (P)  
**CONTROLLERATE OF NAVAL  
 ARMAMENT INSPECTION  
 MUMBAI**  
  
 DRG No.  
 NAI(MB) 9154/2/10/3  
 (PROVISIONAL)

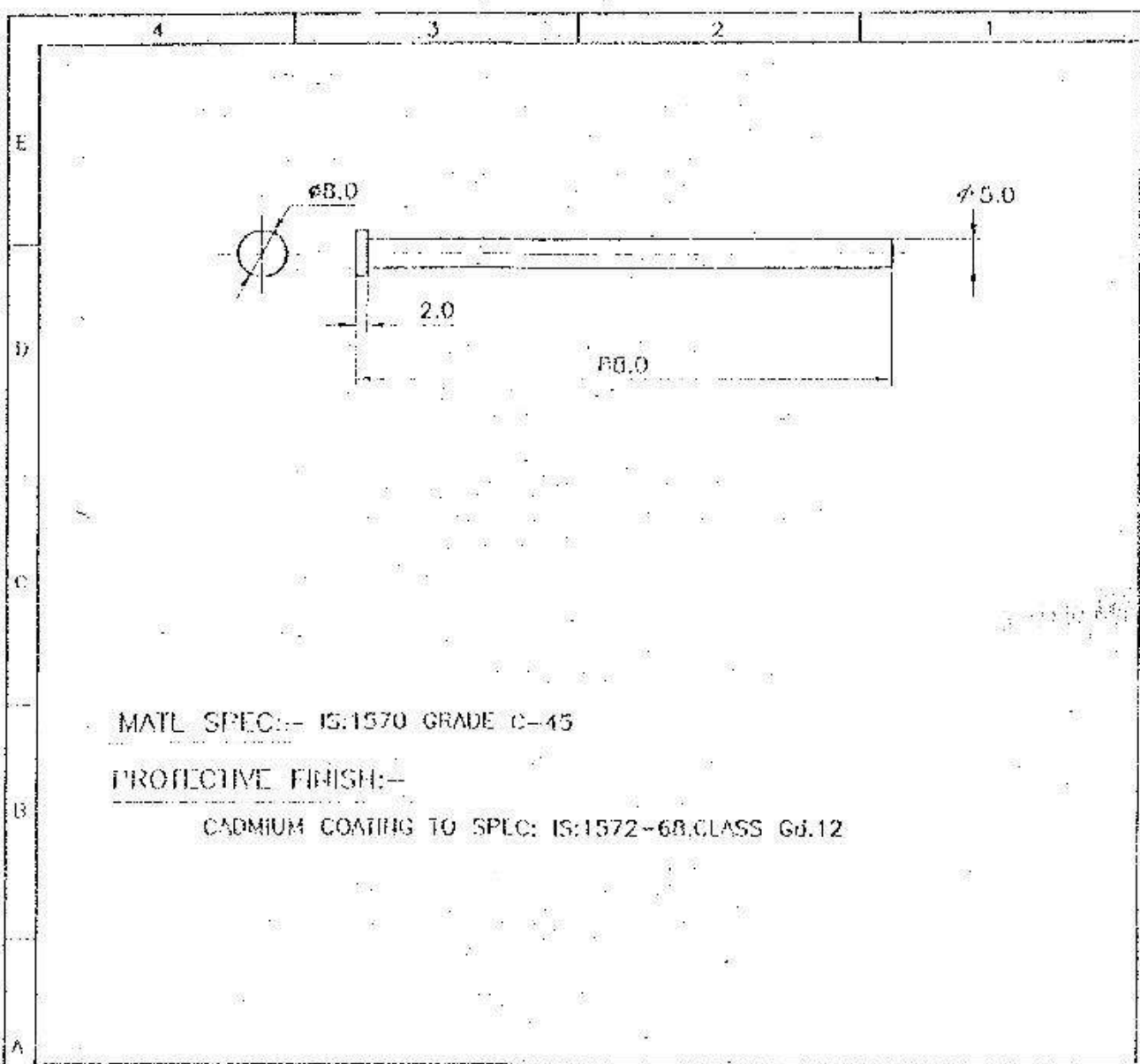
**SUPPORTING PIECE**

USED ON BOX 30 mm CISE AK 630  
 END USE: CATCH ASSEY

BASED ON: SAMPLE

TRIM ON THIS LINE WHEN SUPPLY TO TRADE

10



MATL SPEC:- IS:1570 GRADE C-45

PROTECTIVE FINISH:-

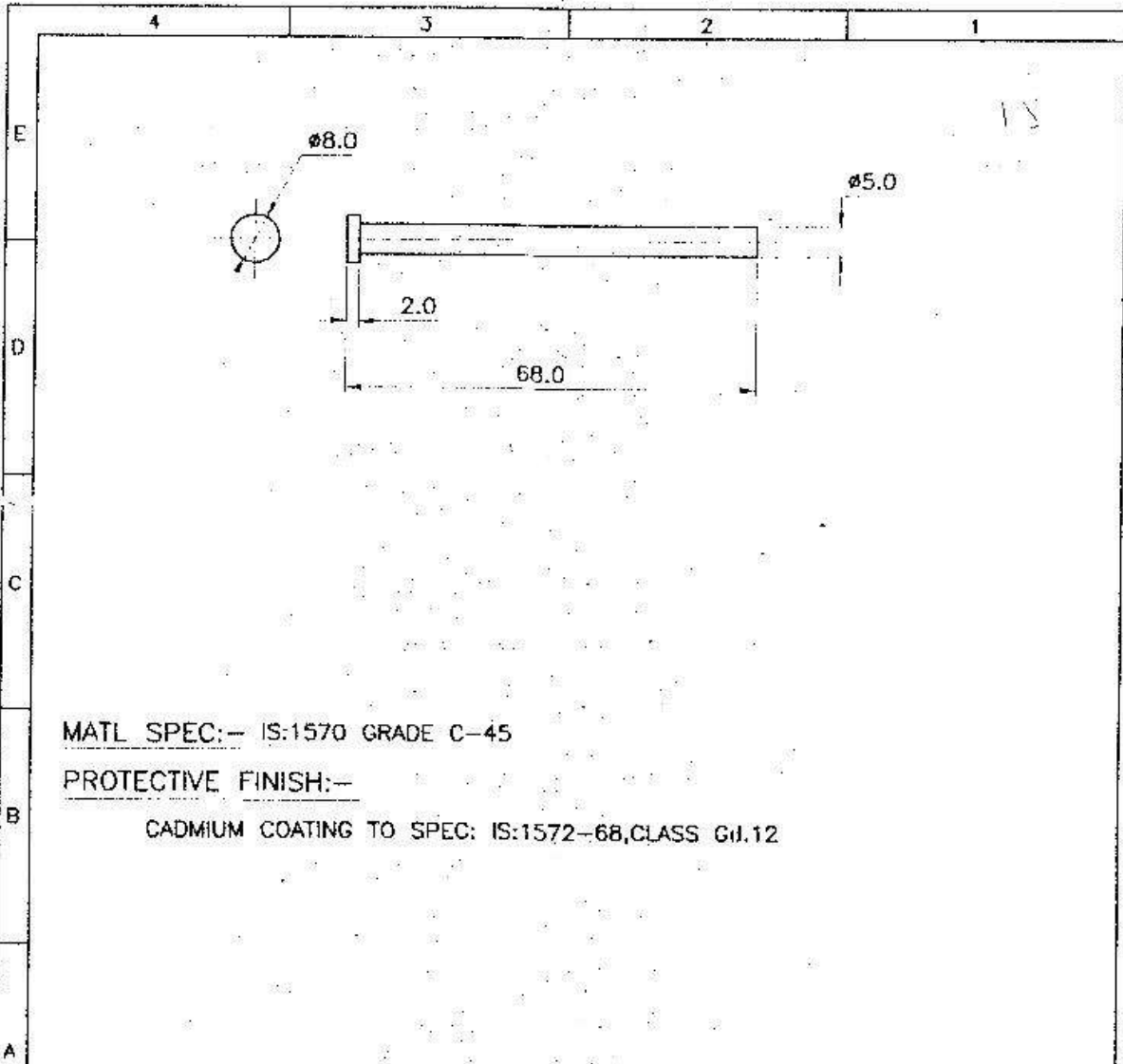
CADMIUM COATING TO SPEC: IS:1572-68, CLASS Gd.12

	07-04-02		PROVISIONALLY SEALED BY DGNAL		(Signature)
	01-02-03		APPROVED		
DRG No	DATE	ZONE	DRIFT RECORD	AUTHORITY	INITIALS
SCALE 1:1	TOL	DIMENSIONS ARE IN mm		ASSY DRG No.	
DRN	DRN: <i>shk</i>	ICD	COMP: <i>shk</i>	CHU: <i>shk</i>	NAI(MB) 9154/2/10 (P)
PASSED :	<i>(Signature)</i>	APPROVED	<i>(Signature)</i>	CONTROLLERATE OF NAVAL ARMAMENT INSPECTION MUMBAI	
MATL :	STEEL	GEN SPEC: NA SPEC A 310			
MATL SPEC :	AS ABOVE	STORE REF No:			
PROTECTIVE FINISH :	AS ABOVE				
<b>PIN-B</b>					
				DRG No.	NAI(MB) 9154/2/10/2 (PROVISIONAL)

M1

USED ON : BOX 20mm CTGR Ak 630  
 END USE : ...

BASED ON : SAMPLE



MATL SPEC:- IS:1570 GRADE C-45

PROTECTIVE FINISH:-

CADMIUM COATING TO SPEC: IS:1572-68,CLASS GII.12

07-04-03		PROVISIONALLY SEALED BY DGNAI			
01-02-03		APPROVED			
R.No	DATE	ZONE	BRIEF RECORD	AUTHORITY	INITIALS
SCALE :1:1		TOL	DIMENSIONS ARE IN mm		ASSY DRG No.
DGN	DRN: <i>Shah</i>	TCD	COMP <i>CDK</i>	ICHD <i>Shah</i>	NAI(MB) 9154/2/10 (P)
PASSED: <i>Shah</i> CD		APPROVED <i>Shah</i> for CNAI		CONTROLLERATE OF NAVAL ARMAMENT INSPECTION MUMBAI	
MATL : STEEL		GEN SPEC: NA SPEC A 31B			
MATL SPEC : AS ABOVE		STORE REF No.:			
PROTECTIVE FINISH : AS ABOVE					
PIN-A					
				DRG No. NAI(MB) 9154/2/10/1 (PROVISIONAL)	

A4

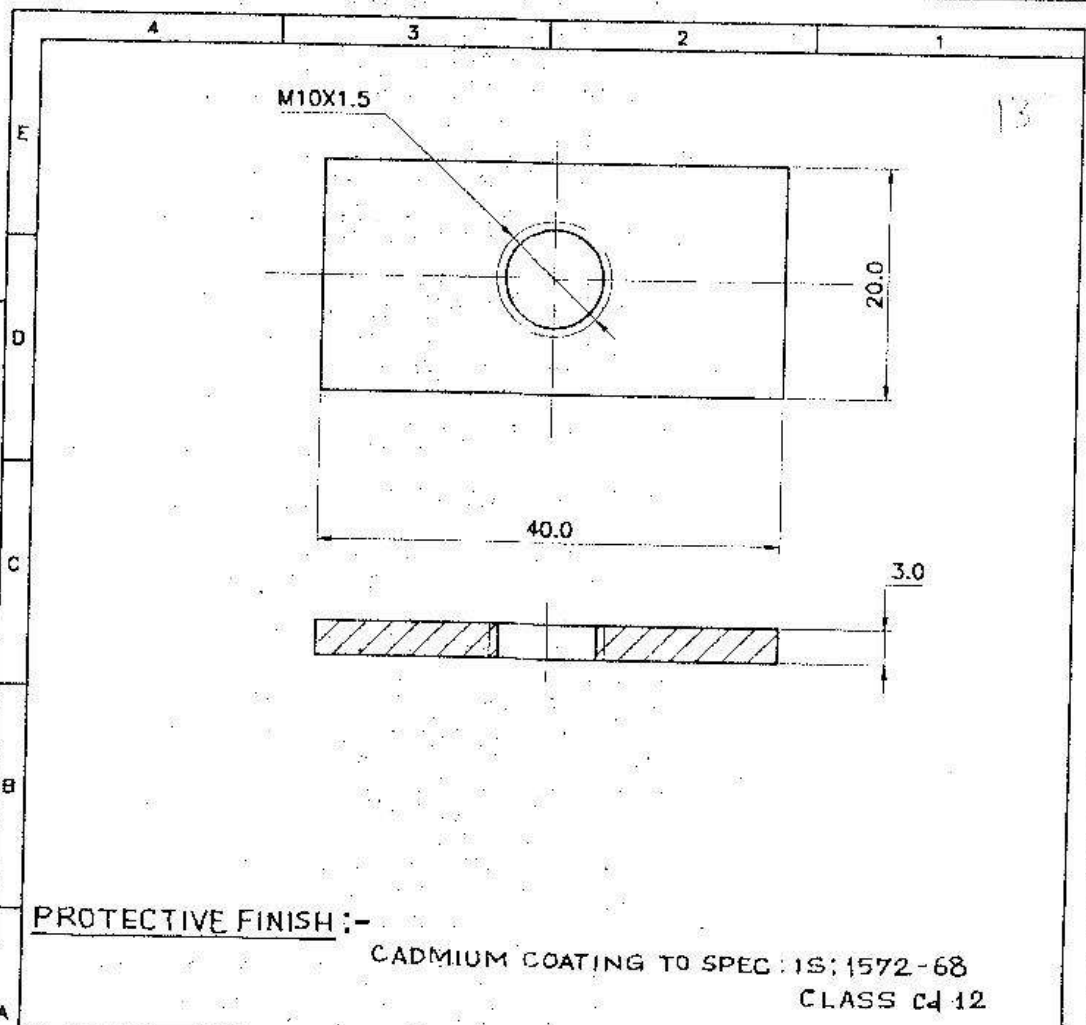
USED ON : BOX 30 mm CTGE AK 630  
END USE: CATCH ASSY

BASED ON : SAMPLE

DRAWING SUPPLIED TO TRADE







**PROTECTIVE FINISH:-**

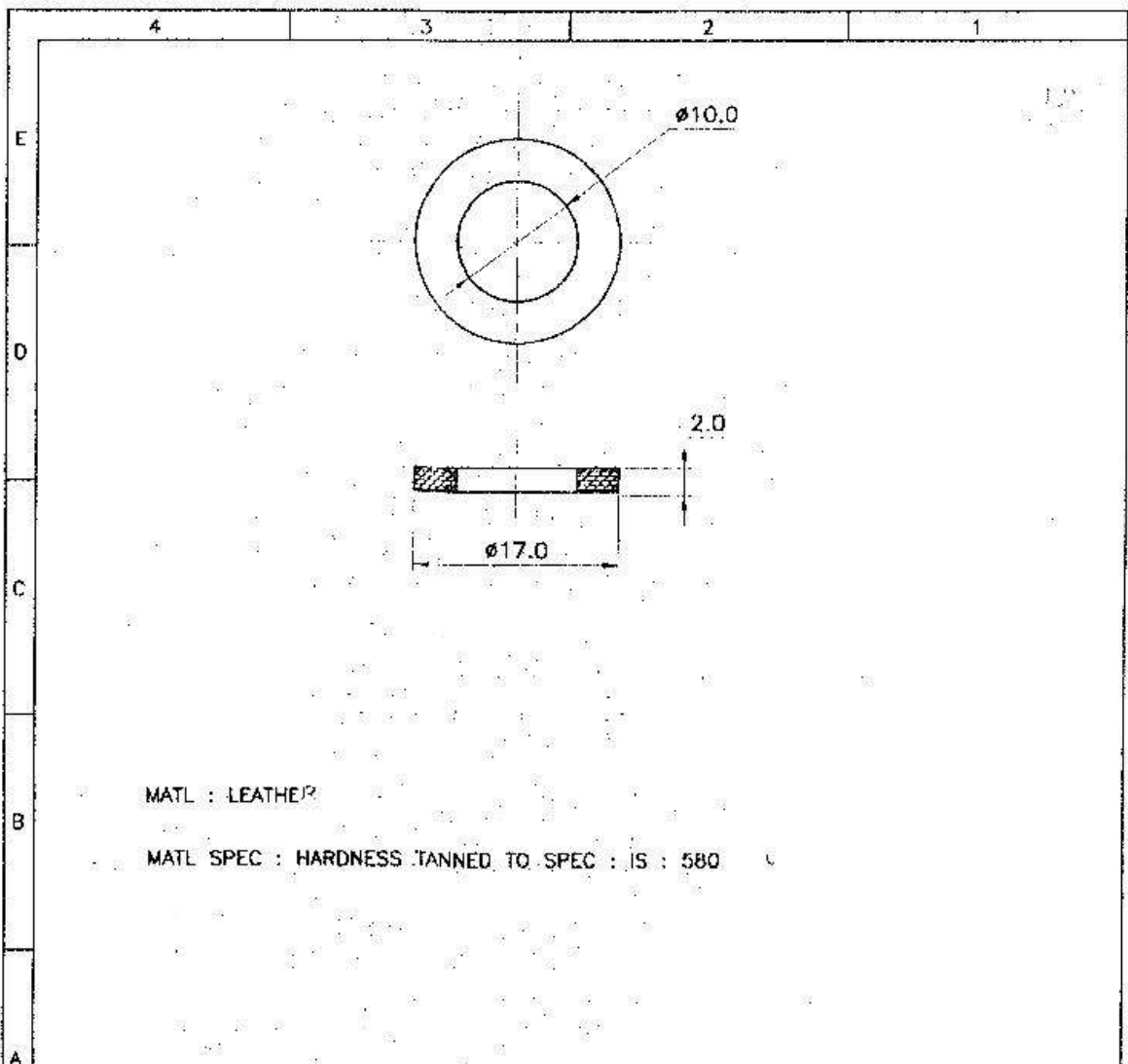
CADMIUM COATING TO SPEC : IS: 1572-68  
CLASS Cd 12

	07-04-03		PROVISIONALLY SEALED BY DGN/NAI		
	01-02-03		APPROVED		<i>[Signature]</i>
R.No	DATE	ZONE	BRIEF RECORD	AUTHORITY	INITIALS
SCALE : 2 : 1	TOL	DIMENSIONS ARE IN mm		ASSY DRG No.	
DGN	DRN <i>[Signature]</i>	TCD	COMP <i>[Signature]</i>	CHD <i>[Signature]</i>	NAI(MB) 9154/2 (P)
PASSED :	<i>[Signature]</i> CD	APPROVED	<i>[Signature]</i> for CNAI	CONTROLLERATE OF NAVAL ARMAMENT INSPECTION MUMBAI	
MATL :	STEEL	GEN SPEC: NA SPEC A 31B			
MATL SPEC :	IS:1570 Gde-C-20	STORE REF No.:			
PROTECTIVE FINISH : SEE DRG.					
<b>RECTANGULAR PIECE</b>					
				DRG No. <b>NAI(MB) 9154/2/9</b> (PROVISIONAL)	

TRIM ON THIS LINE Y IEN SUPPLY TO TRADE

USED ON : BOX 30 mm DTGES AK 630  
END USED: LID ASSY

BASED ON : SAMPLE



MATL : LEATHER

MATL SPEC : HARDNESS TANNED TO SPEC : IS : 580

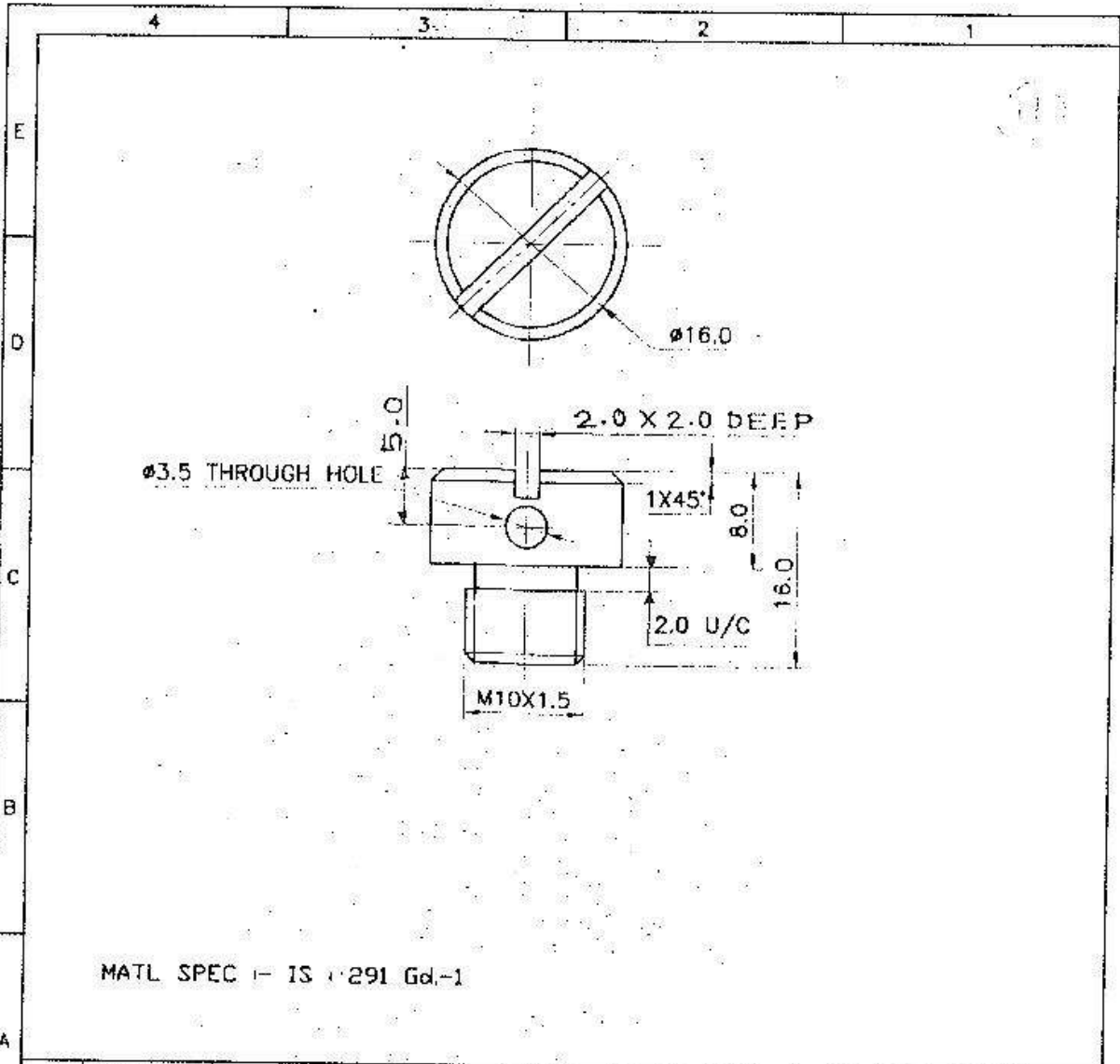
TRIM ON THIS LINE WHEN SUPPLY TO TRADE

07-04-03		PROVISIONALLY SEALED BY DGNAL		<i>(Signature)</i>	
01-02-03		APPROVED			
R.No	DATE	ZONE	BRIEF RECORD	AUTHORITY	INITIALS
SCALE : 2 : 1		TOL		DIMENSIONS ARE IN mm.	
DGN	DRN <i>(Signature)</i>	TCD	COMP <i>(Signature)</i>	CHD <i>(Signature)</i>	ASSY DRG No. NAI(MB) 9154/2(P)
PASSED : <i>(Signature)</i>		APPROVED : <i>(Signature)</i>		CONTROLLERATE OF NAVAL ARMAMENT INSPECTION MUMBAI	
MATL : SEE DRG		GEN SPEC: NA SPEC A 31B			
MATL SPEC : SEE ABOVE		STORE REF No.:			
PROTECTIVE FINISH :					
<p><b>WASHER</b></p>					
					DRG No. NAI(MB) 9154/2/8 (PROVISIONAL)

A4

USED ON : BOX 30 mm CTGES AK630  
 END USED . LID ASSY

BASED ON : SAMPLE



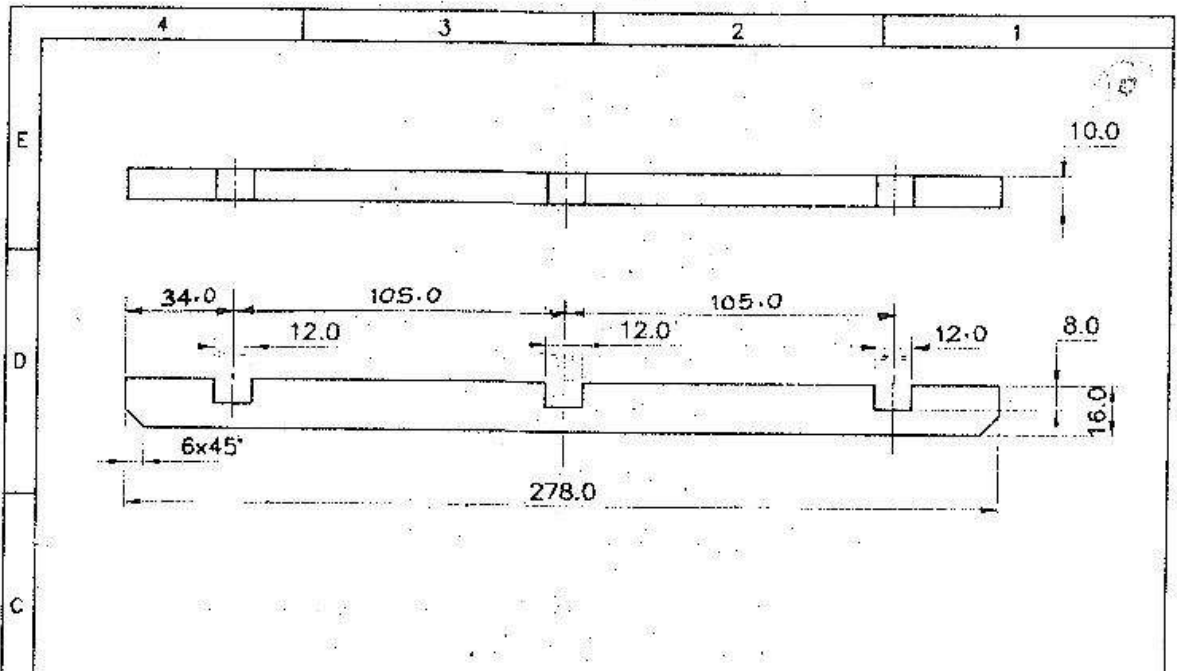
MATL SPEC - IS 1291 Gd-1

	07-04-03		PROVISIONALLY SEALED BY DGN A1		<i>[Signature]</i>
	01-02-03		APPROVED		
R.No	DATE	ZONE	BRIEF RECORD	AUTHORITY	INITIALS
SCALE : 2 : 1		TOL	DIMENSIONS ARE IN mm		ASSY DRG No.
DGN	DRN 737	TCD	COMP <i>[Signature]</i>	CHD <i>[Signature]</i>	NAI(MB) 9154/2(P)
PASSED :		APPROVED <i>[Signature]</i>		CONTROLLERATE OF NAVAL ARMAMENT INSPECTION MUMBAI	
MATL : NAVAL BRASS		GEN. SPEC: NA SPEC A 31B			
MATL SPEC : SEE ABOVE		STORE REF No.:			
PROTECTIVE FINISH					
SLOTTED CHEESE HEAD SCREW					
					DRG No. NAI(MB) 9154/2/7 (PROVISIONAL)

TRIM ON THIS LINE WHEN SUPPLY TO TRADE

USED ON : BOX 30mm CTGES AKG30  
 END USED : LIP ASSY

BASED ON : SAMPLE



NOTE :- BURRS TO BE REMOVED FROM THE SURFACE.

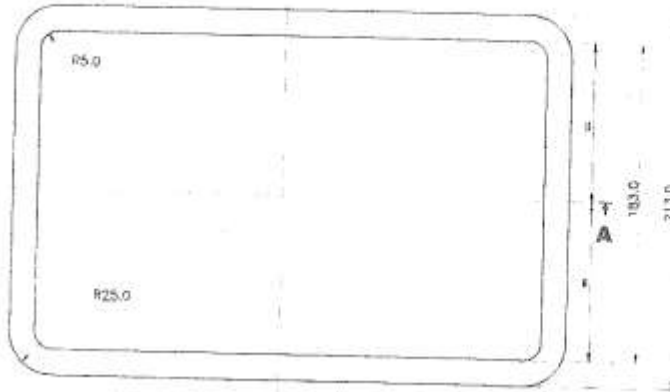
MATL SPEC : IND/ME/884(PROV) CLASS C-2.

PROTECTIVE FINISH :- TO BE PRESERVED IN TALK DUST OR FRENCH CHALK AND TO BE COATED WITH SILICON GREASE BEFORE ASSY.

	07-04-03		PROVISIONALLY SEALED BY DGNAI		(Signature)
	01-02-03		APPROVED		
R.No	DATE	ZONE	BRIEF RECORD	AUTHORITY	INITIALS
SCALE : 1 : 2	TOL	DIMENSIONS ARE IN mm		ASSY DRG No.	
DGN	DRN 2/20	TCD	COMP. (Signature)	CHD (Signature)	NAI(MB) 9154/2 (P)
PASSED :	(Signature)	CD	APPROVED	(Signature)	CNAI
MATL : NEOPRENE RUBBER	GEN SPEC: NA SPEC-A 31B		CONTROLLERATE OF NAVAL ARMAMENT INSPECTION MUMBAI		
MATL SPEC : SEE ABOVE	STORE REF No.:				
PROTECTIVE FINISH SEE ABOVE					
RUBBER PAD					
				DRG No. NAI(MB) 9154/2/6 (PROVISIONAL)	

USED ON : BOX 30 mm CTGES AK630  
 END USE : LID ASSY

BASED ON : SAMPLE



**NOTE -**  
BURRS TO BE REMOVED FROM THE SURFACE

**MATL SPEC -**  
IND/ME/884(PROV) CLASS C-3

**PROTECTIVE FINISH -**  
TO BE PRESERVED IN TALK DUST OR FRENCH CHALK & TO BE COATED WITH SILICON GREASE BEFORE ASSY.

**SECTION A-A**

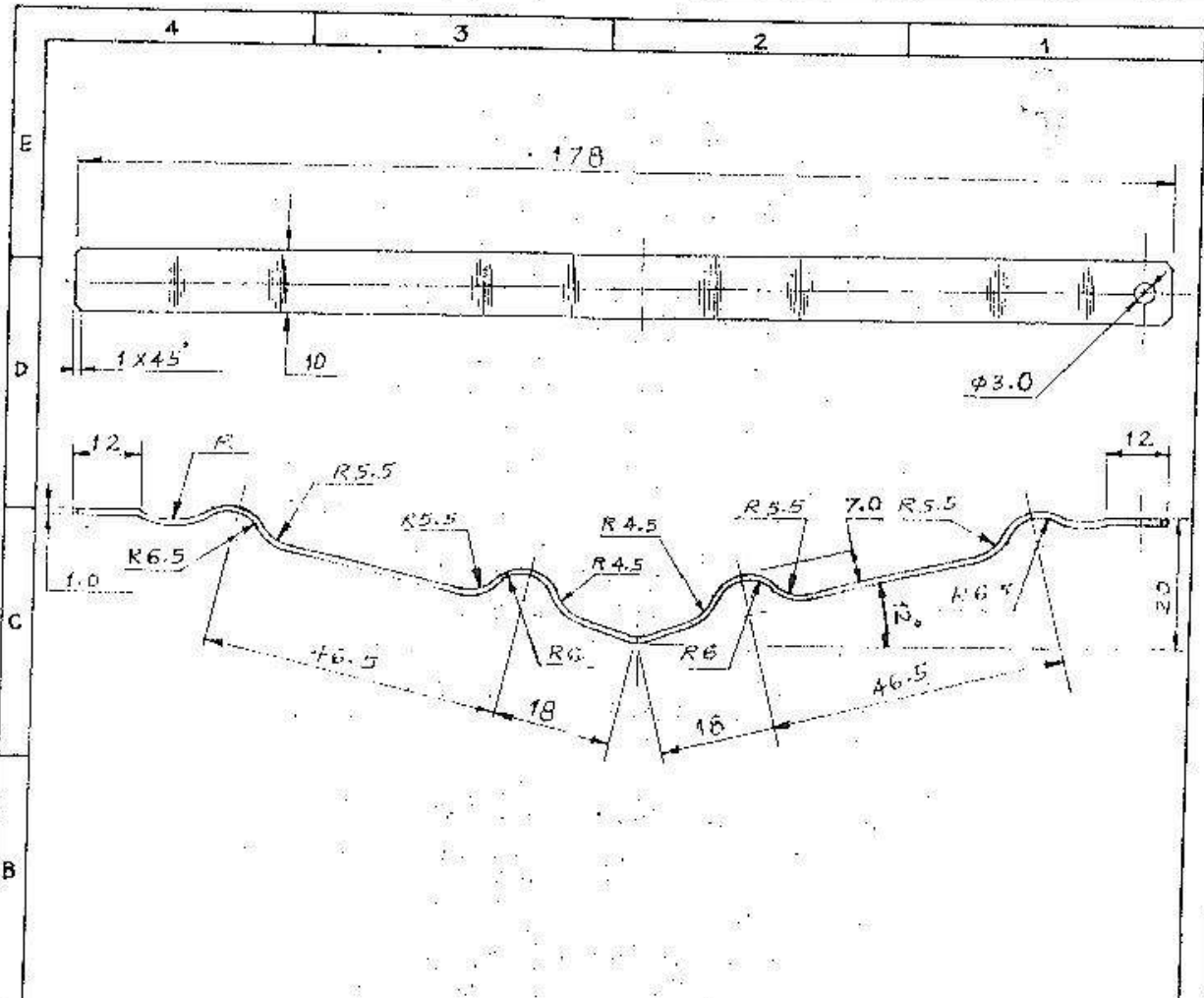
			SCALE : 1 : 2		TOL		DIMENSIONS ARE IN mm			ASSY DRG No.	
			DDN	DRN 712.0	TOD		COMP	CHK	CHK	NAI(MB)9154/2 (P)	
A7-04-05			PROVISEDLY RECAL BY DGMN1			PASSED		APPROVED			<b>CONTROLLERATE OF NAVAL ARMAMENT INSPECTION MUMBAI</b>
01-02-03			N/A			15/08/05		R-0NAI			
R.No	DATE	ZONE	BRIEF RECORD	AUTHORITY	INITIALS	MATL : NEOPRENE RUBBER		GEN SPEC : NA SPEC A 318			
						MATL SPEC : SEE ABOVE		STORE REF No.			
						PROTECTIVE FINISH (SEE ABOVE)					DRG No. <b>NAI(MB)9154/2/5</b> (PROVISIONAL)

**GASKET**

USED IN: BOX 30 mm CTG25 AK630  
END USE: I-D ARMY

BASED ON: SAMPLE

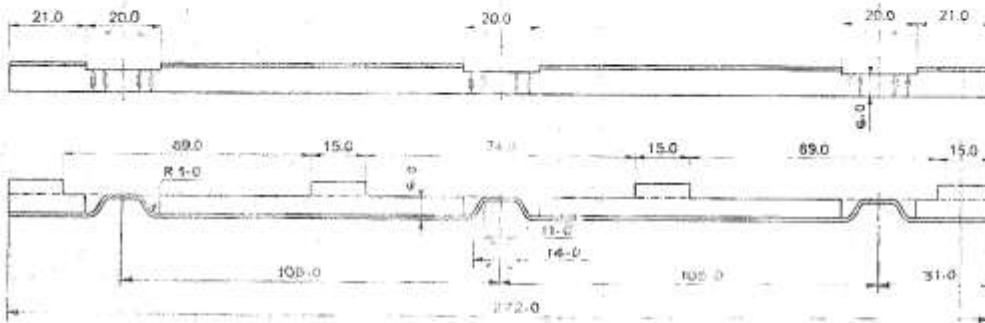
NOT TO BE USED WITHOUT SUPPLY TO INDR



PROTECTIVE FINISH:- CADMIUM COATING TO SPEC:  
IS:1572-68, CLASS cd-12.

07-04-03		PROVISIONALLY SCALED BY OGNAI			
01-02-03		APPROVED		DPA/CP	
R.No	DATE	ZONE	BRIEF RECORD	AUTHORITY	INITIALS
SCALE : NTS		TOL:	DIMENSIONS ARE IN mm		ASSY DRG No.
DGN :	DRN : 039	TCD :	COMP : <input checked="" type="checkbox"/>	CHD : <i>[Signature]</i>	NAI(MB) 9154/2
PASSED :		APPROVED		<b>CONTROLLERATE OF NAVAL ARMAMENT INSPECTION MUMBAI</b>	
MATL : SPRING STEEL		GEN SPEC: NA SPEC A 31B			
MATL SPEC : GCC		STORE REF. No. :			
PROTECTIVE FINISH :					
<p><b>CLAMP-III</b></p>					
				DRG No. <b>NAI(MB) 9154/2/4</b> (PROVISIONAL)	

A4  
 USED ON : BOX 30 mm CIGE AK630  
 END USE : LID ASSY.  
 BASED ON : SAMPLE.



**NOTES:-**

- (1) ALL SHARP CORNERS TO BE REMOVED
- (2) TO BE SENT AFTER INSERTING THE BASKET INTO LID

**MATL SPEC:-**

IS:1079-73 HOT ROLLED AND ANNEALED GJ.EDD  
OR

IS:513-73 COLD ROLLED AND ANNEALED GJ.EDD

**PROTECTIVE FINISH:-**

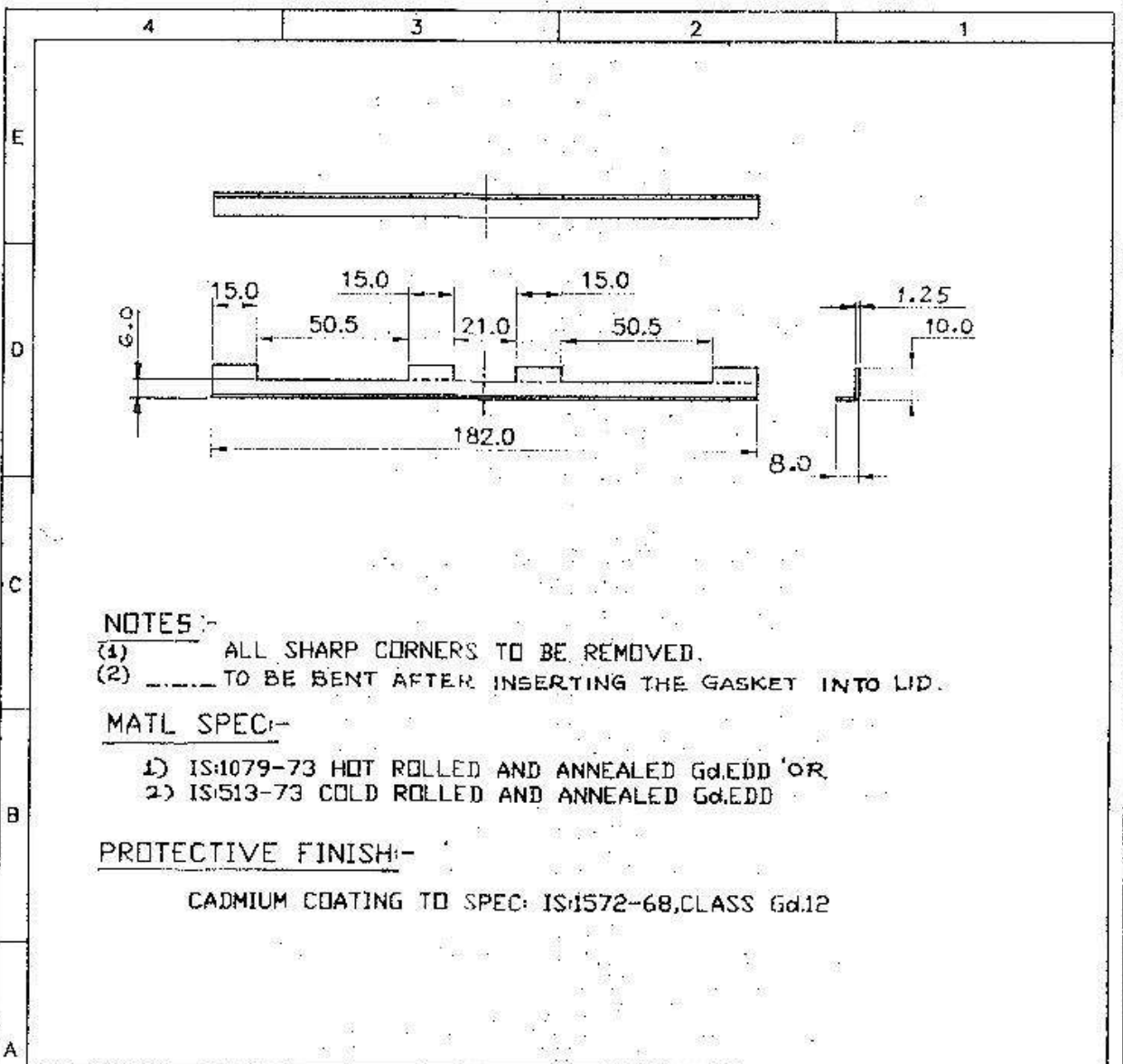
CADMIUM COATING TO SPEC: IS:1572-68, CLASS G6.12

					SCALE : 1:1	TOL: -	DIMENSIONS ARE IN mm			ASSY DRG No.
					DGN	DRW	TCD	COMP	CHD	NAI(MB) 3154/2(P)
					PASSED :	APPROVED			<b>CONTROLLERATE OF NAVAL ARMAMENT INSPECTION MUMBAI</b>	
					MATL	STEEL	GEN SPEC : NA SPEC A 318			
R.No	DATE	ZONE	BREF RECORD	AUTHORITY	INITIALS	STORE REF No.:				
					MATL SPEC : AS ABOVE					
					PROTECTIVE FINISH AS ABOVE					
<b>CLAMP -II</b>										
										DRG No. NAI(MB) 3154/2/3 (PROVISIONAL)

USED ON : BOX 30mm CTGES AK630  
END USEP : LID ASSY

BASED ON : SAMPLE





**NOTES:-**

- (1) ALL SHARP CORNERS TO BE REMOVED.
- (2) TO BE BENT AFTER INSERTING THE GASKET INTO LID.

**MATL SPEC:-**

- 1) IS:1079-73 HOT ROLLED AND ANNEALED Gd.EDD OR
- 2) IS:513-73 COLD ROLLED AND ANNEALED Gd.EDD

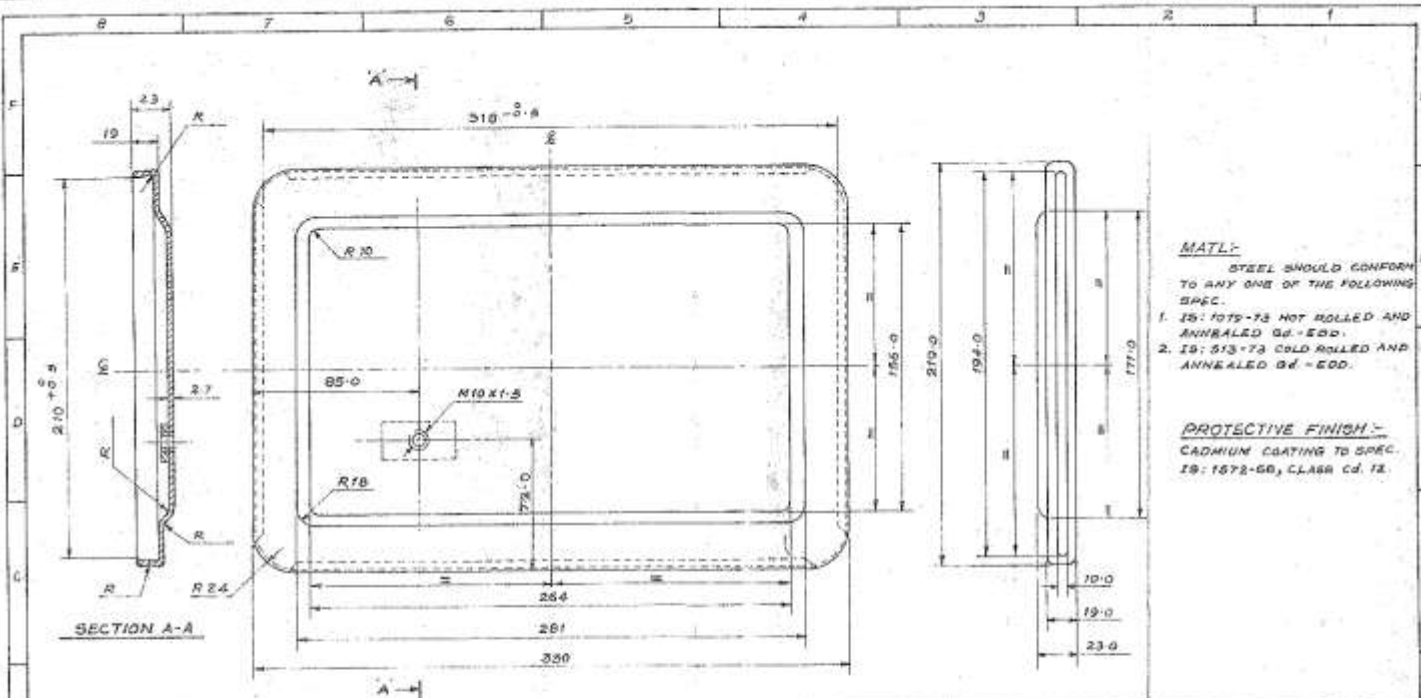
**PROTECTIVE FINISH:-**

CADMIUM COATING TO SPEC: IS:1572-68, CLASS Gd.12

07-04-03		PROVISIONALLY SEALED BY DGNAI			SVM/CD	
01-02-03		APPROVED				
R.No	DATE	ZONE	BRIEF RECORD		AUTHORITY	INITIALS
SCALE : 1 : 2		TOL	DIMENSIONS ARE IN mm		ASSY DRG No.	
DGN	DRN	TCD	COMP	CHD	NAI (MB) 9154/2 (P)	
PASSED :		APPROVED		CONTROLLERATE OF NAVAL		
MATL : STEEL		GEN SPEC: NA SPEC A 31B		ARMAMENT INSPECTION		
MATL SPEC : SEE DRG.		STORE REF No:		MUMBAI		
PROTECTIVE FINISH : SEE DRG.						
CLAMP -I				DRG No.		
				NAI(MB) 9154/2/2		
				(PROVISIONAL)		

A4  
 USED ON : BOX 30 mm CTGES AK 630  
 END USED : LID ASSY

BASED ON : SAMPLE



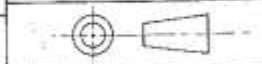
**MATL:**  
 STEEL SHOULD CONFORM TO ANY ONE OF THE FOLLOWING SPEC.  
 1. IS: 1079-73 HOT ROLLED AND ANNEALED 08-EDD.  
 2. IS: 513-73 COLD ROLLED AND ANNEALED 08-EDD.

**PROTECTIVE FINISH:**  
 CADMIUM COATING TO SPEC. IS: 1572-60, CLASS Cd. 12.

SECTION A-A

SCALE: - NTS		TOL:		DIMENSIONS ARE IN MM	
DDN	DDN (P)	TOD	COMP	CHK	CHK
PASSED			APPROVED		
07-06-03	PROVISIONALLY DRAWD BY DNAI	07/06/03			
01-02-03	APPROVED				
R.NR	DATE	CONR	BRIEF RECORD	AUTHORITY	INITIALS

ASBY DRG. NO  
 - NAI(MB)9154/2 (P)  
 CONTROLLERATE OF NAVAL  
 ARMAMENT INSPECTION  
 MUMBAI



DRG. NO  
 NAI(MB)9154/2/1  
 (PROVISIONAL)

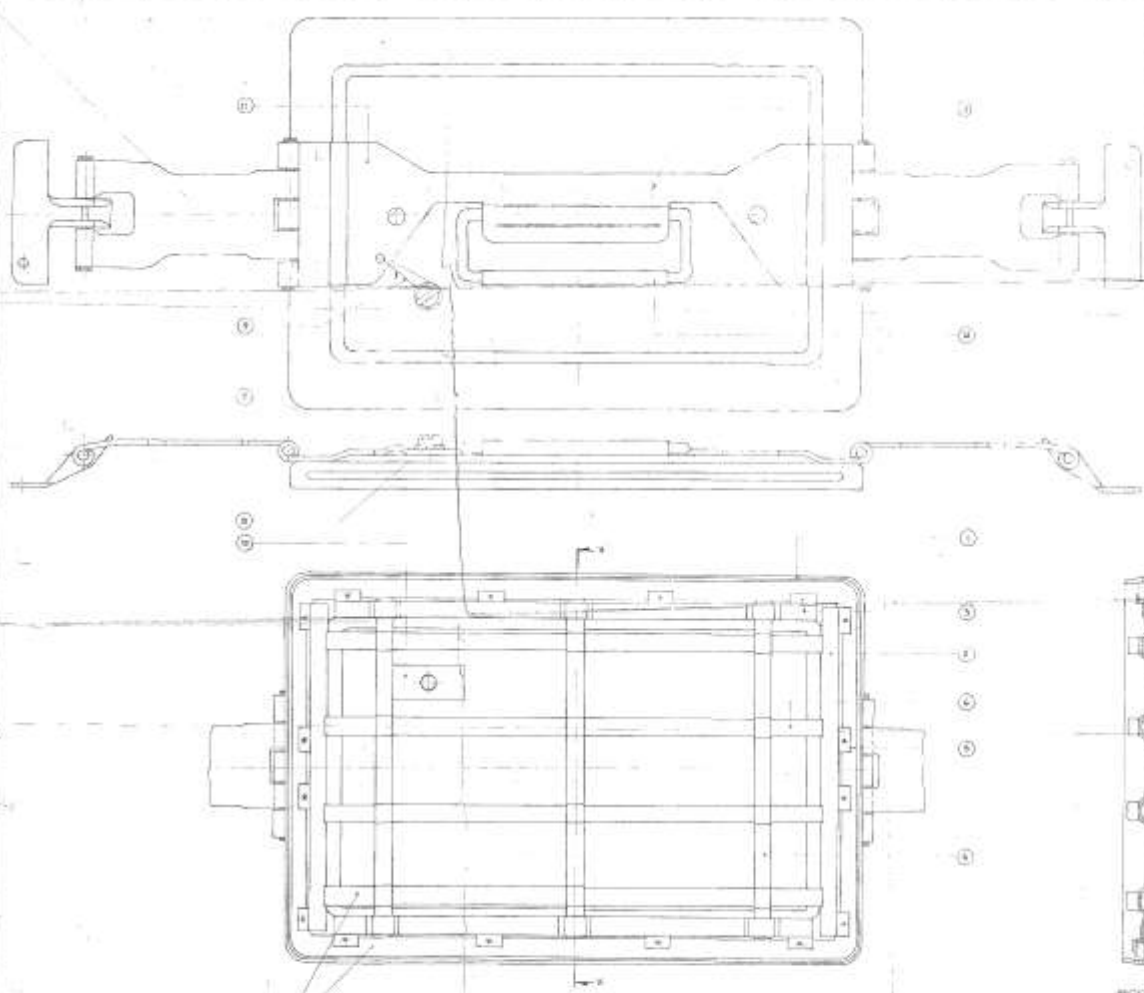
**LID**

USED ON: BOX 30 mm CTGES AKG30  
 END USE - LID ASSY

BASED ON: SAMPLE

FRAM ON THIS LINE MUST SUPPLY TO TRADE

REV	DATE	BY	CHKD	DESCRIPTION
1				INITIAL RELEASE
2				INITIAL RELEASE
3				INITIAL RELEASE
4				INITIAL RELEASE
5				INITIAL RELEASE
6				INITIAL RELEASE
7				INITIAL RELEASE
8				INITIAL RELEASE
9				INITIAL RELEASE
10				INITIAL RELEASE
11				INITIAL RELEASE
12				INITIAL RELEASE
13				INITIAL RELEASE
14				INITIAL RELEASE
15				INITIAL RELEASE
16				INITIAL RELEASE
17				INITIAL RELEASE
18				INITIAL RELEASE
19				INITIAL RELEASE
20				INITIAL RELEASE

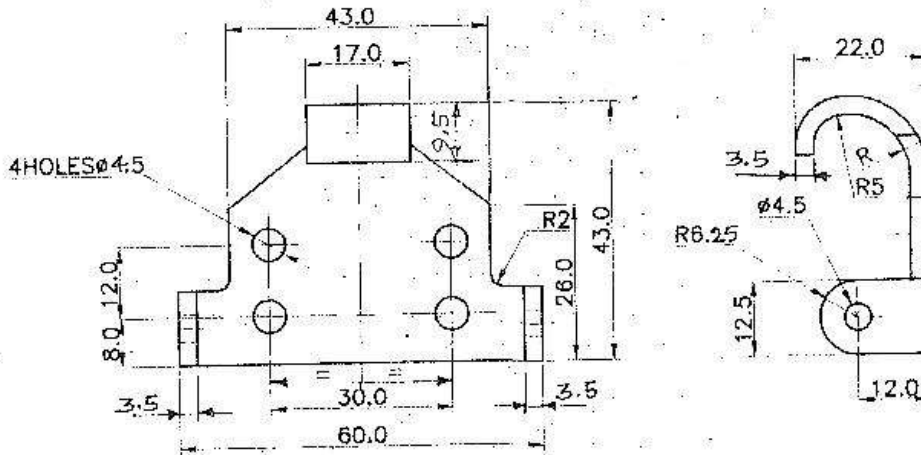


AFTER WIPER RELEASE OF A CONTAMINATED BARRAGE  
 CONTROL AND TO BE COTTED BY SPECIAL FOR PROTECTION MATERIALS  
 SEE TO BE TRUCKS AS FRONT

REV	DATE	BY	CHKD	DESCRIPTION
1				INITIAL RELEASE
2				INITIAL RELEASE
3				INITIAL RELEASE
4				INITIAL RELEASE
5				INITIAL RELEASE
6				INITIAL RELEASE
7				INITIAL RELEASE
8				INITIAL RELEASE
9				INITIAL RELEASE
10				INITIAL RELEASE
11				INITIAL RELEASE
12				INITIAL RELEASE
13				INITIAL RELEASE
14				INITIAL RELEASE
15				INITIAL RELEASE
16				INITIAL RELEASE
17				INITIAL RELEASE
18				INITIAL RELEASE
19				INITIAL RELEASE
20				INITIAL RELEASE

**LID ASSEMBLY**

REV 10  
 10/10/11 105477



MATL SPEC : IS:1079-73 HOT ROLLED & ANNEALED Gd.-EDD

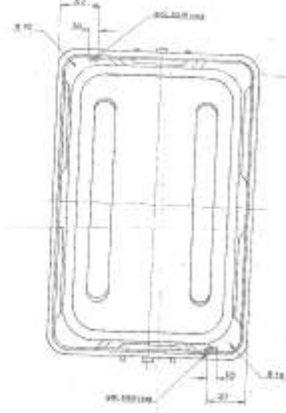
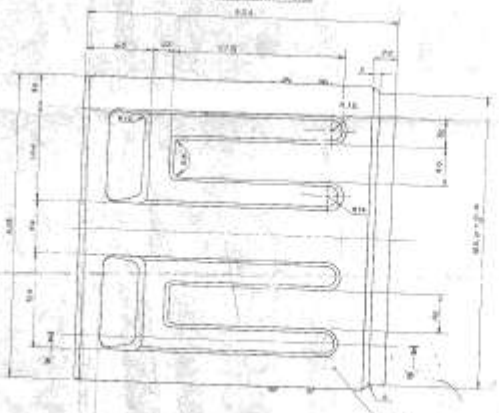
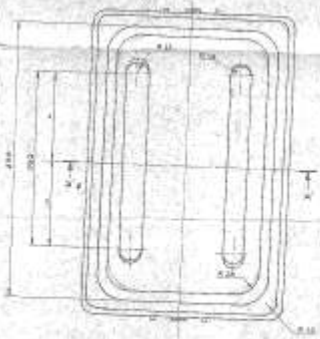
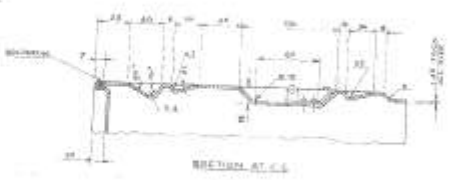
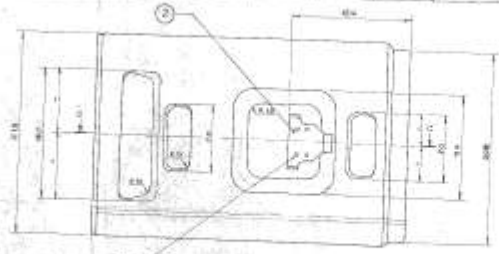
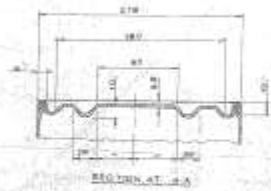
PROTECTIVE FINISH :- CADMIUM COATING TO SPEC IS : 1572-68, CLASS Gd 12

07-04-03		PROVISIONALLY SEALED BY (DGN)		<i>(Signature)</i>	
01-02-03		APPROVED			
R.No	DATE	ZONE	BRIEF RECORD	AUTHORITY	INITIALS
SCALE : 1:1		TOL	DIMENSIONS ARE IN mm		ASSY DRG No.
DGN	DRN <i>(Signature)</i>	TCD	COMP <i>(Signature)</i>	CHD <i>(Signature)</i>	NAI(MB) 9154/1(P)
PASSED :		APPROVED		CONTROLLERATE OF NAVAL ARMAMENT INSPECTION MUMBAI	
<i>(Signature)</i> CD		<i>(Signature)</i> CNAI			
MATL	STEEL	GEN SPEC: NA SPEC A. 31B			
MATL SPEC : SEE ABOVE		STORE REF No.:			
PROTECTIVE FINISH : SEE ABOVE					
<u>CATCH PLATE</u>				DRG No. <b>NAI(MB) 9154/1/1</b> (PROVISIONAL)	

A4

USED ON : BOX 30 mm CTGES AKG30.  
END USE : BODY

BASED ON : SAMPLE



**NOTES:** - ALL SURFACES UNLESS OTHERWISE SPECIFIED TO BE MACHINED TO A FINISH OF 32 RMS.

1. ALL DIMENSIONS ARE UNLESS OTHERWISE SPECIFIED TO BE IN INCHES.
2. ALL DIMENSIONS ARE UNLESS OTHERWISE SPECIFIED TO BE IN MILLIMETERS.

**CONSTRUCTION:** -

CUSTOMER DRAWING NUMBER: 1572-02, 1430, 1431

**REVISIONS:**

1. ALL DIMENSIONS TO BE MACHINED TO A FINISH OF 32 RMS UNLESS OTHERWISE SPECIFIED.
2. FOR DIMENSIONS TO BE MACHINED TO A FINISH OF 32 RMS UNLESS OTHERWISE SPECIFIED.
3. ALL DIMENSIONS TO BE MACHINED TO A FINISH OF 32 RMS UNLESS OTHERWISE SPECIFIED.



SCHEMATIC OF COMMENTS			
NO.	DESCRIPTION	DATE	BY
1	...	...	...
2	...	...	...
3	...	...	...
4	...	...	...

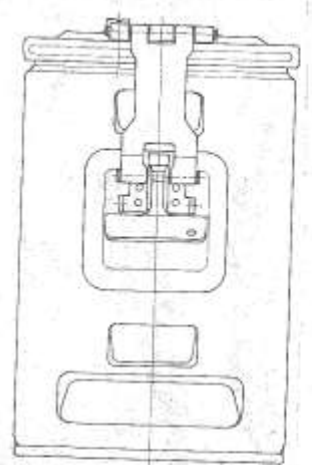
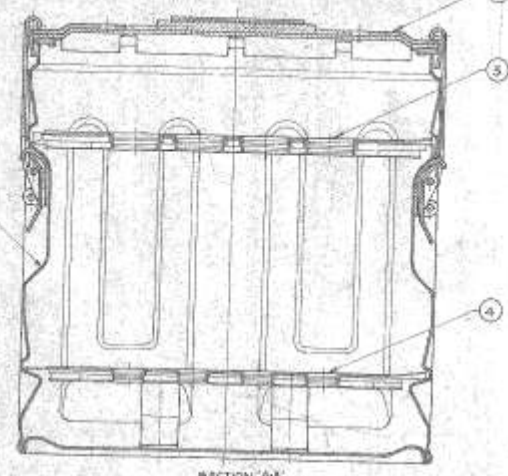
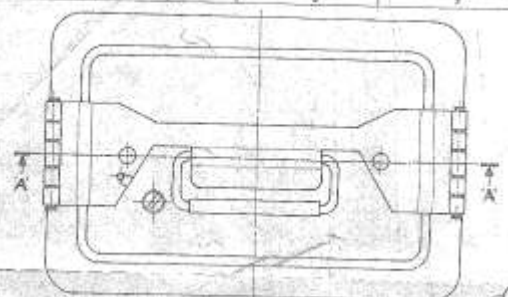
NO.	DATE	BY	DESCRIPTION
1	...	...	...
2	...	...	...
3	...	...	...
4	...	...	...

**BODY**

(1/1) (1572) 2156/1  
PROVISIONAL

BASED ON DRAWING

SCHEDULE OF COMPONENTS			
Sl. No.	NOMENCLATURE	DWG NO.	QTY/REMARKS
1	BODY	NAI(MB) 9154/1 (D)	1
2	LID ASSY	NAI(MB) 9154/2 (D)	1
3	PIECE HOLDING TOP PLATE ASSY	NAI(MB) 9154/3 (D)	1
4	PIECE HOLDING BOTTOM PLATE ASSY	NAI(MB) 9154/4 (D)	1



**NOTES:**

- ON COMPLETION OF THE EMPTY BOX AND BEFORE DELIVERY THE CATCH MUST BE SECURED WITH A PIECE OF RUST FREE 8-10 MM 1.20 mm LENGTH AS REQUIRED TO PREVENT DAMAGE DURING TRANSPORT.
- BOX SHOULD BE MANUFACTURED AND INSPECTED IN ACCORDANCE WITH SPEC-1A: 116P.

SECTION 'A-A'

DRAWN BY: [Signature]		CHECKED BY: [Signature]		APPROVED BY: [Signature]		DATE: 01-03-03	
MATERIAL SPECIFICATION		MANUFACTURE		INSPECTION		STORAGE	
MATERIAL SPECIFICATION		MANUFACTURE		INSPECTION		STORAGE	
MATERIAL SPECIFICATION		MANUFACTURE		INSPECTION		STORAGE	

**BOX ASSY. (EMPTY)**  
(FOR 30 mm CARTRIDGE AK 630)

CONTROLLERATE OF NAVAL ARMAMENT INSPECTION MUMBAI	
DRAWING NO. <b>NAI(MB) 9154</b> (PROVISIONAL)	

USED ON:  
END USE:

SCALE: 1:1  
DATE: 01-03-03  
DRAWN BY: [Signature]  
CHECKED BY: [Signature]  
APPROVED BY: [Signature]