

42201, 7490302403

THIS DOCUMENT AND THE INFORMATION CONTAINED IN IT ARE PROPRIETARY AND CONFIDENTIAL TO OPI. NO PERSON OR ENTITY IS ALLOWED TO COPY, REPRINT, REPRODUCE OR PUBLISH ANY PART OF THIS DOCUMENT, NOR DISCLOSE ITS CONTENTS TO OTHERS, NOR MAKE ANY USE OF IT, NOR ALLOW OR ASSIST OTHERS TO MAKE ANY USE OF IT UNLESS BY THE PRIOR WRITTEN EXPRESS AUTHORIZATION OF OPI AND THEN ONLY TO THE EXTENT AUTHORIZED. COPYRIGHT © OPI.

Tolerance class	Permissible deviations for linear size range									
	0.1	0.2	0.3	0.5	0.7	1.0	1.5	2.0	3.0	5.0
IT10	±0.10	±0.15	±0.20	±0.30	±0.40	±0.50	±0.70	±1.00	±1.50	±2.00
IT9	±0.08	±0.12	±0.16	±0.25	±0.35	±0.45	±0.60	±0.90	±1.30	±1.80
IT8	±0.06	±0.09	±0.12	±0.18	±0.25	±0.32	±0.42	±0.60	±0.85	±1.20
IT7	±0.04	±0.06	±0.08	±0.12	±0.17	±0.22	±0.28	±0.40	±0.55	±0.80
IT6	±0.03	±0.04	±0.05	±0.07	±0.10	±0.13	±0.17	±0.24	±0.33	±0.45
IT5	±0.02	±0.03	±0.04	±0.05	±0.07	±0.09	±0.12	±0.16	±0.21	±0.28
IT4	±0.015	±0.02	±0.025	±0.035	±0.045	±0.06	±0.08	±0.11	±0.14	±0.18
IT3	±0.01	±0.015	±0.02	±0.025	±0.03	±0.04	±0.05	±0.07	±0.09	±0.12
IT2	±0.007	±0.01	±0.012	±0.015	±0.02	±0.025	±0.03	±0.04	±0.05	±0.07
IT1	±0.005	±0.007	±0.009	±0.01	±0.012	±0.015	±0.018	±0.02	±0.025	±0.03

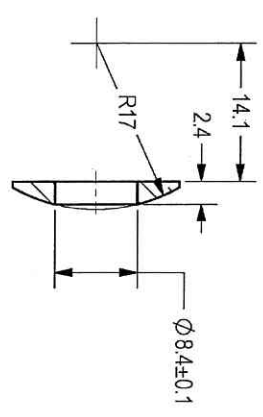
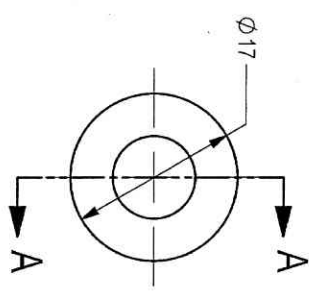
NOTES:

1. INTERPRET THIS DRAWING IAW ASME Y14.100M.
2. MATERIAL: CRES BAR TYPE 17-4PH PER AMS 5643. (EQUIVALENT STEEL IS PERMITTED AFTER ELBIT APPROVAL).
3. HEAT TREATMENT TO H1100 PER MIL-H-6875 CLASS D.
4. DEBUR AND REMOVE SHARP EDGES APPROX. 0.3X45°.
5. GENERAL TOLERANCES ACCORDING TO ISO 2768-m.
6. PASSIVATION TREATMENT PER AMS-QQ-P-35 TYPE II.
7. BAKE PART AFTER PLATING WITHIN 4 HOURS PER ASTM B 850 CLASS ER12.
8. QUALITY ASSURANCE PROVISIONS: 7.1 QUALITY ASSURANCE PROVISIONS FOR THIS ITEM PER RDMD00012P.
9. PACKAGING AND PACKING: THE FINISHED PART SHALL BE PRESERVED AND PACKAGED IN ACCORDANCE WITH COMMERCIAL PRACTICE.
10. IDENTIFY PER MIL-STD-130 PARA 4.1.B, BY LABELING ITS CONTAINER WITH THE PART NUMBER, CHARACTERS MINIMUM TEXT HEIGHT 1.25 MM.

DWG NO 064414A-00

SHEET REV RECORD  
ALL SHEETS ARE THE SAME REVISION

REV	ECO	DESCRIPTION	DATE	APVD
01		Freeze	14-Jun-12	
02		Restrictd	17-Oct-13	
---	T00064	Identical To Previous Released	09-Apr-18	L Goldstein

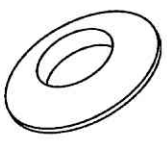


REVISIONS CORRECTED  
DATE: 26.11.2020  
BY: [Signature]

(WEIGHT APPROX.: 0.002 Kg.)

UNLESS OTHERWISE SPECIFIED DIMENSIONS ARE IN MM PER ASME Y14.5M -1994		DRAWN	SIGNATURE	DATE
TOLERANCES		CHECKED		
LINEAR	ANGULAR	HOS/DDO		
SEE NOTE 5	SEE NOTE 5	OFFICER/PRODN		
1st ANGLE PROJECTION		OFFICER/QC		
SURFACE TEXTURE IN Micro INCH		OFFICER/DDO		
TITLE		ORDNANCE FACTORY TIRUCHIRAPPALLI		
WASHER SPHERICAL		FOR: TRAVERSE ASSY		
SIZE	QAGE CODE	DWG NO	OF: 12.7MM SRCG	
B	2291A	064414A-00	--	
SCALE 1:1	AUTOMATED DRAWING (SW)	SHEET 1 OF 1		

SEE ATTACHED MEDIA



2

1

PLM Control