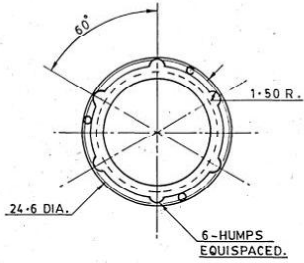
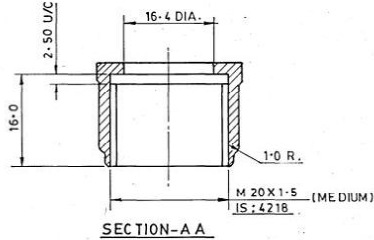
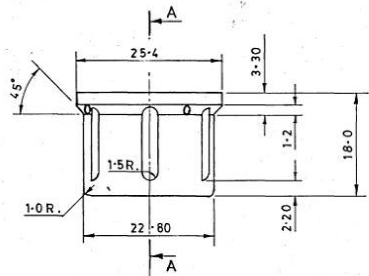
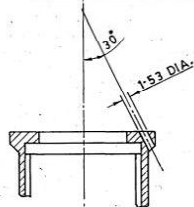
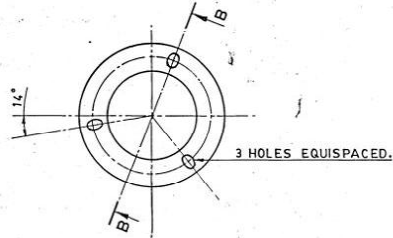


D.S. CAT. NO. 5975-065701



DIMNS. ARE IN mm. GEN. TOL. "MEDIUM" IS: 2102.

DRAWING PREPARED BY REVERSE ENGINEERING PROCESS. AS SUCH SUITABLE NUMBER OF ADVANCE SAMPLES ARE TO BE TRIED OUT BY FITMENT & FIRING BY CQA(SA), BEFORE BULK IS PRODUCED.

ALTERNATIVE MATERIAL :-

AL - ALLOY TO SPECN. BS:1490-1970 DESIG. LM- 6 OR LM-25 OR IS:617-1975 DESIG. 4600 OR 4600A OR 4450.

NOTE :-

FOR OTHER TECHNICAL REQUIREMENTS REFER TO JSS: 50 860-1993.

SHARP EDGES REMOVED.

ESP-11330

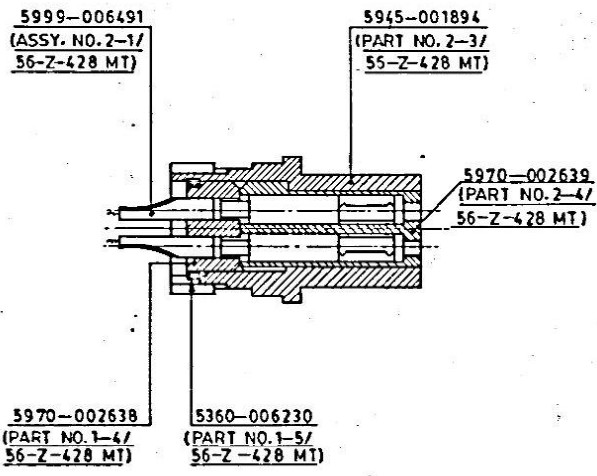
DRN. CHD.		TRD. Sharma	COMP. Kishor	AHSP, CQA(SA), ICHAPU
SCALE :- 2:1		EST. MASS.	APPROVED. DT. 23.12.77	ASSY. CQA(SA)SK-359
04-7-12	26648-SA	D.S. CAT. No. ADDED.		
27-1-2001	24922-SA	PROFORMA CHANGED, NEG. RE-TRACED AND DRG. PROV. RE-SEALED.		
DATE AUTHY		BRIEF RECORD	ZONE	DGNR'S REF. CISA - 554/12
SEALED :- PROV. D.C. NO. 19935-SA, DT. 5.3.88				PART NO. 2-5/56-Z-428M
NOMENCLATURE :-		COUPLING NUT		DRG. NO.
				D.S. CAT. NO. 5975-065701

068100-5945  
D.S.CAT NO. 5945-001899

DRAWING CONVENTIONS CONFORM TO IS: 696.  
DIMNS. ARE IN mm. GEN. TOL. "MEDIUM" IS: 2102

DRAWING PREPARED BY REVERSE ENGINEERING  
PROCESS, AS SUCH SUITABLE NUMBER OF ADVANCE  
SAMPLES ARE TO BE TRIED OUT BY FITMENT & FRNG  
BY CQA(SA), BEFORE BULK IS PRODUCED.

SHARP EDGES REMOVED.



65P 11331

32

13.7.2000		24773-SA	PROFORMA CHANGED, NEG. RE-TRACED & DRG. PROJ. RE-SEALED	DATE	AUTHY.	BRIEF RECORD	ZONE	I/C;D.O.	G.O.	DRN.	CHD.	TRD. <i>stamada</i>	COMP. <i>M. Banerji</i>	AHSP. CQA(SA) CHAPUR
			PREVIOUS D.C. NOS. 19825-SA, 20491-SA, 20768-SA, 21875-SA, 22110-SA & 24730-SA.							SCALE: 2:1		EST. MASS.		ASSY. CQA(SA) SK-359
										DT. 13-7-2000	<i>Anula</i>	APPROVED.	DT. 4.2.78	
												NEG. RE-TRACED		
										MATERIAL :-				DGNR'S REF. CISA-554/18
										H.T./HARDNESS:-				PART NO. ASSY. 2-2/56-Z-428 MT
										PROTECTIVE FINISH:-				DRG. NO.
										NOMENCLATURE :- TWO-POLE SOCKET ASSY.				D.S.CAT. 5945-001890
														NO.

D.S-CAT 5945-001894

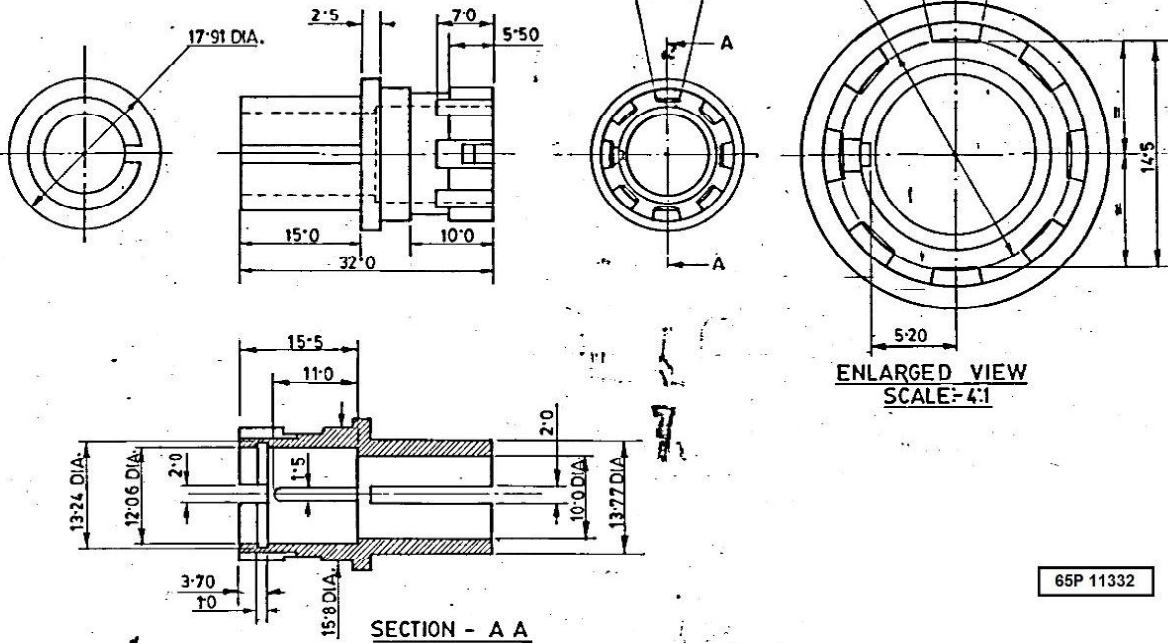
DRG. CONVENTIONS CONFORM TO JSG 0104  
DIMNS. ARE IN m.m. GEN. TOL. MEDIUM IS: 2102

DRAWING PREPARED BY REVERSE ENGINEERING  
PROCESS AS SUCH SUITABLE NUMBER OF ADVANCE  
SAMPLES ARE TO BE TRIED OUT BY FITMENT &  
FIRING BY CQA(SA) BEFORE BULK IS PRODUCED.

MATL.  
AL. ALLOY TO SPECN. BS.1490-1970 DES.  
LM-9 OR IS: 617-1975 DES. 4635

ALTERNATIVE MATL.  
AL. ALLOY TO SPECN. BS.1490 DES.  
LM-6 OR LM-25 OR IS: 617-1975 DES.  
4600 OR 4600 A OR 4450.

FOR OTHER TECHNICAL REQUIREMENTS  
REFER TO JSS: 50860-1993.



ENLARGED VIEW  
SCALE: 4:1

65P 11332

09.6.2003		25760-SA	PROFORMA CHANGED, NEG. RE-TRACED, AND DRG. PROV. RE-SEALED	DRN.	CHD.	TRD. <i>Barth</i>	COMP. <i>Steele</i>	AHSP, CQA(SA), ICHAPUR
DATE AUTHY.		BRIEF RECORD		SCALE :- 2:1, 4:1	EST. MASS.	APPROVED	DT. 4-2-78.	ASSY. 5945-001890.
SEALED :- PROV. D.C. NO. 19935-SA DT. 5-3-88.		PREVIOUS D.C. NOS. 19935-SA, 20775-SA, 20828-SA, 2162-SAR, 24170-SA		DT. 09.6.2003.	1/C D.O.	NEG. RE-TRACED		OGNR'S REF. CISA-554/19
NOMENCLATURE :-		SOCKET BODY		MATERIAL :- AS STATED		PART NO. 2-3/56-Z-428 MT		DRG. NO.
				H.T./HARDNESS :-		PROTECTIVE FINISH		D.S. CAT NO. 5945-001894
				SIGN.				1366

6E9200-0265 ON D.S. CAT. 1970-002639

DRAWING CONVENTIONS CONFORM TO J56:0104  
DIMNS. ARE IN mm. GEN. TOL. "MEDIUM" IS: 2102

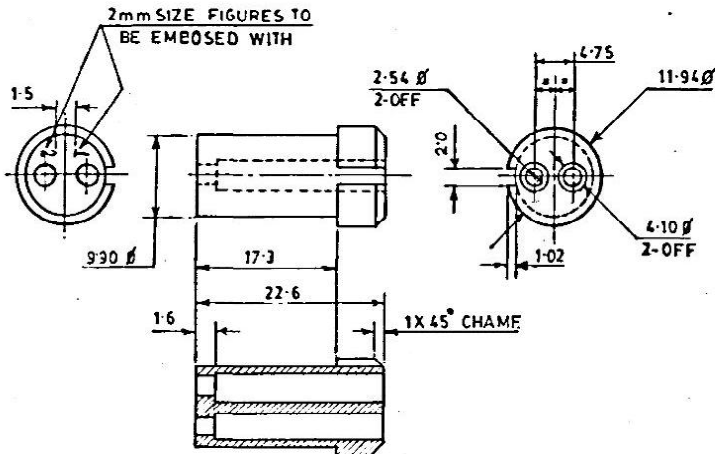
MARKING (SUITABLY) ON SAMPLE / TAG.

- † Yr Of Mfg.
- \* MANUFACTURER'S CODE
- ⊕ D.S. CAT. NO.

DRAWING PREPARED BY REVERSE ENGG PROCESS,  
AS SUCH SUITABLE NUMBER OF ADVANCE SAMPLES  
ARE TO BE TRIED OUT BY FITMENT & FIRING BY  
CQA (SA), BEFORE BULK IS PRODUCED.

NOTE:

FOR OTHER TECHNICAL REQUIREMENTS  
REFER TO JSS: 50860-1993.



65P 11333

34

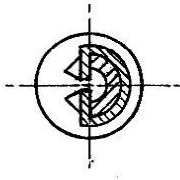
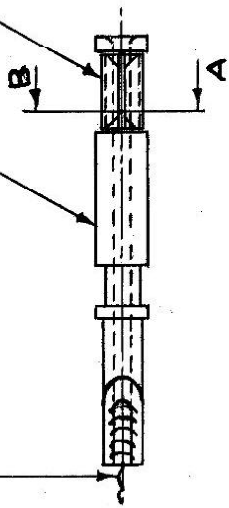
21.8.2003		24813-SA	PROFORMA CHANGED, NEG. RE-TRACED AND DRG. PROV. RE-SEALED.	And	1/1	DRN.	CHD.	TRD. <i>W. S. S.</i>	COMP. <i>W. S. S.</i>	AHSP. CQA(SA) ICHAPUR
			PREVIOUS D.C. NOS. 19935-SA, 20492-SA, 20774-SA, 20832-SA, 22880-SA AND 24170-SA.	COPY	COPY	SCALE: 2:1		EST. MASS:		ASSY. 5945-001890
DATE	AUTHY.	BRIEF RECORD		ZONE	1/C.D.O.	DI. 21-8-2000	<i>Andes</i>	APPROVED. DT.		⊕
SEALED :-		PROV. D.C. NO. 19935-SA, DATE :- 5.3.88		SIGN.	G.O.	MATERIAL :- PLASTIC.	1/C.D.O.	NEG. RE-TRACED.		DGNR'S REF. CISA 554/20
NOMENCLATURE :- SOCKET INSULATING INSERT						H.T/HARDNESS :-				PART NO. 2-4/56-Z-428M
						PROTECTIVE FINISH :-				DRG. NO.
										D.S. CAT. NO. 5970-002639



SUCH SUITABLE NUMBER OF ADVANCE SAMPLES ARE TO BE TRIED OUT BY FITMENT & FIRING BY CQA(SA) BEFORE BULK IS PRODUCED.

ELECTRIC COPPER WIRE TO BE SOLDERED AT THIS END ON ASSEMBLY.

CISA-554/22  
 (PART NO. 2-17 56-Z-428 MT)  
 5360-006233  
 (PART NO. 2-2/56-Z-428 MT)  
 TO BE PRESSED, BEND AND SHAPED ON ASSLY. SEE SECTIONAL END VIEW.



ENLARGED SECTION 'AB'

68P 11334

35

5999-006491

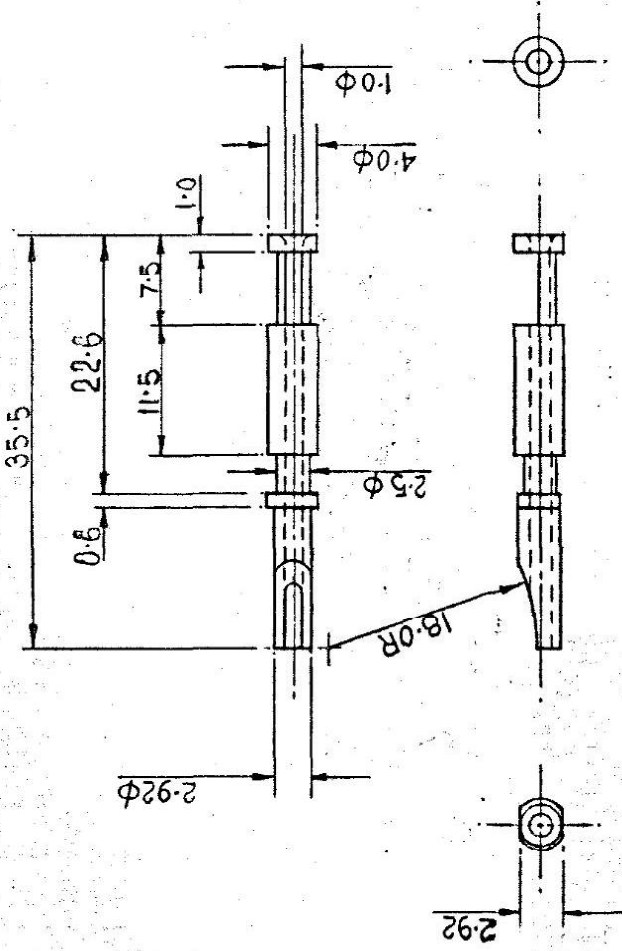
22142-13-2-95	ASSY. NO. ADDED OR PT. NO. AMENDED	10/17/79
20769-2-17-5A	D S CAT NO. ADDED & PART NO. ASSY. 2-17-5A	11/17/79
20491-2-17-5A	CL. NEG. PREPARED & DRG. PROV. RE-SEALED	1/1/80
	PREVIOUS D C O. NO. 19935-9A.	copy.

AUTHY. DATE	ZONE	BRIEF RECORD	SIG.
TOLERANCES FOR UN-TOLERANCED	DATE	NAME	
DIMENSIONS SEE MEDIUM IS: 2102	DGN.		
SHARP EDGES REMOVED.	DRN		
DRAWING CONVENTIONS CONFORM TO IS: 2102	CHD.		
	TRD.	10.7.89	Sharma
	COMP.	13.7.89	Kondal
	SCALE:	2:1	
	SEALERS:	PROV. D.C.O.	

ASSY.	D S CAT NO.	CQA(SA) ICHAPUR
5945-001890		
MATERIAL:-		
DIMENSIONS ARE IN MILLIMETRES		
APPROVED: DT. 4.2.78		
(CL. NEG. PREPARED)		
DESIGNER'S REF.		
CISA-554/21		
D S CAT NO.		

SOCKET

DRAWING PREPARED BY REVERE ENGINEERING PROCESS, AS SUCH SUITABLE NUMBER OF ADVANCE SAMPLES ARE TO BE TRIED OUT BY FITMENT & FIRING BY CQA(SA), BEFORE BULK IS PRODUCED.



MATERIAL: -AL ALLOY TO SPECN.BS:1490-1970  
DES.LM-9 OR IS:617-1975 DES.4635.  
ALT. MATERIAL: -AL ALLOY TO SPECN.BS:  
1490-1970 DES.LM-6 OR LM-25 OR IS:617-1975  
DES.4600 OR 4600A OR 4450.

65P 11335

NOTE: -  
FOR OTHER TECHNICAL REQUIREMENTS  
REFER TO JSS: 50B60-1993.

26579	01-98	D.S.CAT.No. ADDED.	150
24170	02-98	NOTE ADDED	SA
22165	7-3-93	NEG. REVISED, RE-TRACED AND DRG. PROV. RESEALED	SA
		PREVIOUS DC.No. 19935-SA	MAJOR
		3-20491-SA.	COPY
AUTHOR/DATE/REV.		BRIEF RECORD	
DGN.	DATE	NAME	SIG.
DRN.			
CHD.			
TRD.			
COMR.			
DRAWING CONVENTIONS CONFORM TO IS: 693.		TOLERANCES FOR UNTOLE RANCED DIMENSIONS SEE 'MEDIUM'	
IS: 2102.		SHARP EDGES RE-MOVED.	
SCALE: - 2:1		1/6 D.O	
DRAWING CONVENTIONS		SEALING: - PROWDC(I) 19935-SA, DT. 5-3-88.	

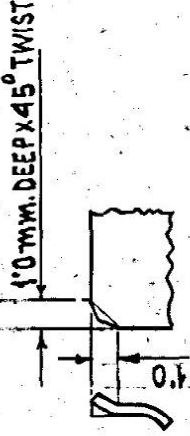
36

D.S.CAT.No: 5999-050359  
ASSY: DS CAT NO. 5999-006491 CQA(SA) ICHAPUR  
MATERIAL: AS STATED  
DIMENSIONS ARE IN MILLIMETRES  
APPROVED DT. 4.2.78 (NEG. RE TRACED)  
DESIGNER'S REF. CISA-554/22  
PART NO. 2-1/56-Z-428MT

SOCKET CONTACT



ARE TO BE TRIED OUT BY FITMENT & FIRING BY  
COAS(SA) BEFORE BULK IS PRODUCED.



ENLARGED PART SECTION 'A'

65P 11336

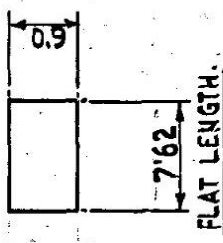
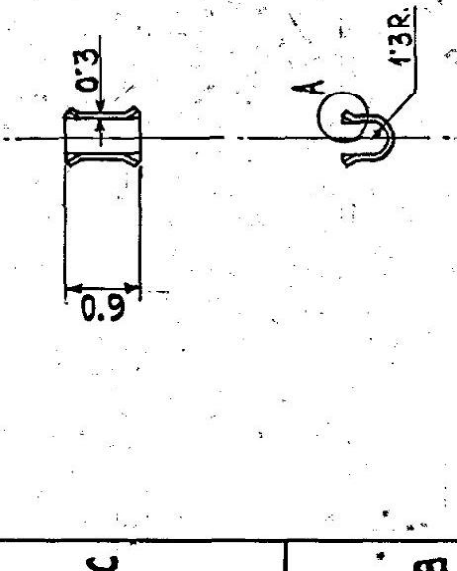
NOTE:-  
FOR OTHER TECHNICAL REQUIREMENTS  
REFER TO JSS:50860-1993.

MATERIAL:-  
BS:1470-1969 DES.SIC,  
CONDITION H4  
OR

IS:737-1965 DES.SIC,  
CONDITION 1/2 H.

DRAWING CONVENTIONS CONFORM  
TO IS: 696

37

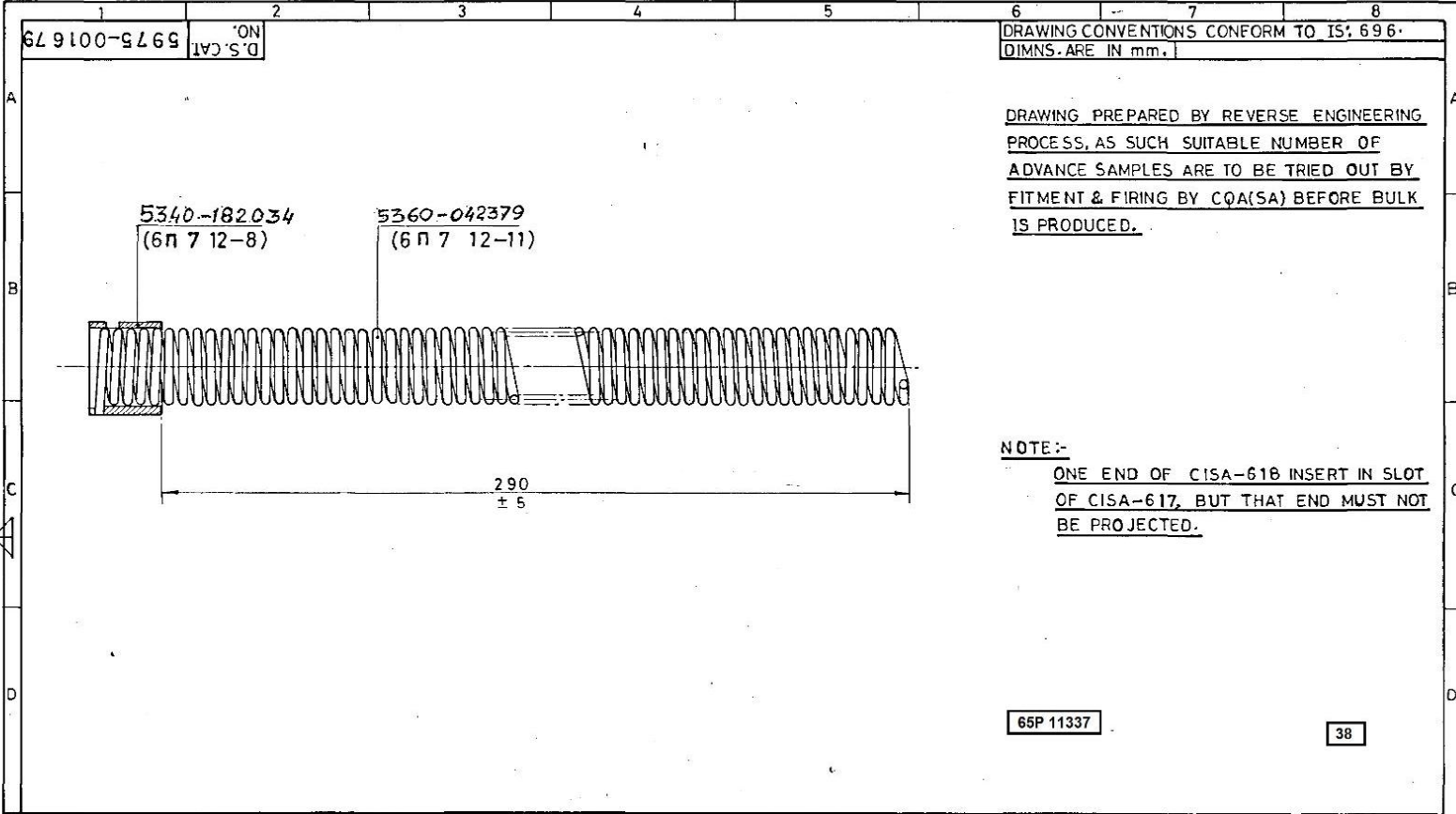


NO.	DATE	ZONE	BRIEF RECORD	SIG.
24170-SA	02-9-98		NOTE ADDED	<i>[Signature]</i>
23142-SA	13-2-93		ASSY. NO. ADDED & PT. NO. AMENDED	<i>[Signature]</i>
20833-SA	12.6.90		ASSY. DRG. NO. & DRAWING CONVENTIONS CONFORM TO IS: 696 ADDED	<i>[Signature]</i>
20771-SA	10.5.90		D.S. CAT NO. 5360 - 006233 ADDED	<i>[Signature]</i>
20573-SA	31.8.89		CL. NEG. PREPARED & DRG. F. PROV. RESEALED	<i>[Signature]</i>
			PREVIOUS D.C.(I) No. 19935-SA.	(COPY)

AUTHY.	DATE	ZONE	BRIEF RECORD	SIG.
			DATE	NAME
			DGN.	
			DRN.	
			CHD.	
	26-7-89		TRD.	<i>[Signature]</i>
	26-7-89		COMP.	<i>[Signature]</i>
	21.9.89		DT.	<i>[Signature]</i>
			SCALE: -2:1	4:1

ASSY. DRG. 5999-006491	C.Q.A(SA) (CHAPUR)
MATERIAL: AS STATED.	
DIMENSIONS ARE IN MILLIMETRES	
APPROVED. DT. 4.2.78	CL. NEG. PREPARED
DESIGNER'S REF. CISA-554/23.	

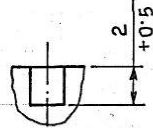
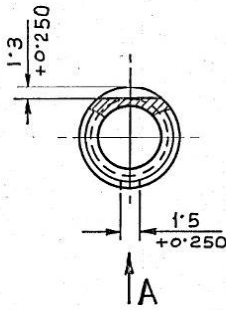
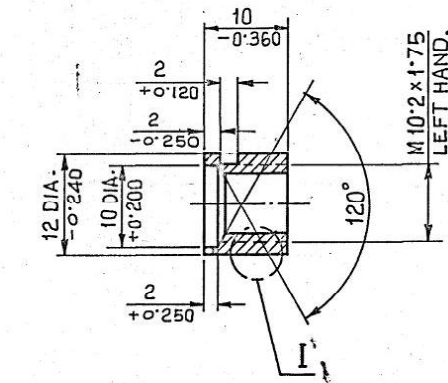
CONTACT SPRING



23-3-96		23301-SA	PROFORMA CHANGED, NEG. RE-TRACED & DRAWING PROV. RE-SEALED.			DRN	CHD	TRD	SHamde	COMP	Bonha	ASSY.	5945-007666
			PREVIOUS D.C. NOS. 19935 SA, 21473 SA & 22840 SA.			SCALE:- 2:1		EST. MASS.		MFG./INSP INSTRUCTIONS.		AHS P	
DATE AUTHY.		BRIEF RECORD		ZONE	IC, D.O.	APPROVED DT 2.11.77		NEG. RE-TRACED		AHS P		CQA(SA) ICHAPUR	
SEALED:- PROV. D.C. 19935-SA		DT. 5.3.88				DT. 23-3-96		IC, D.O.		DGNR'S REF.		CISA-590	
NOMENCLATURE		PROTECTOR ELECTRICAL CABLE ASSY.				MATERIAL.		HT./HARDNESS		DRG No		PART No.	
						PROTECTIVE FINISH				D.S. CAT No.		5975-001679	



D.S. CAT. 5340-182034



ENLARGED VIEW AT I  
SCALE :- 5:1

ENLARGED PART VIEW  
IN DIRECTION 'A'  
SCALE :- 5:1

DRAWING CONVENTIONS CONFORM TO IS: 696  
TOLERANCE FOR UNTOLERANCED DIMENSIONS SEE  
"MEDIUM" IS: 2102

DRAWING PREPARED BY REVERSE ENGINEERING  
PROCESS AS SUCH SUITABLE NUMBER OF  
ADVANCE SAMPLES ARE TO BE TRIED OUT BY  
FITMENT AND FIRING BY CQA(SA) BEFORE  
BULK IS PRODUCED.

MATERIAL: BS: 970 Pt. 3:1991 Gr 070 M55  
OR  
IS: 5517: 1993 DESIG. ~~BS 970 Pt. 3:1991~~ 55 C8

~~(BS 970 Pt. 3:1991)~~

HARDNESS :- 341-395 HV.

PROTECTIVE FINISH :- PHOSPHATE TO SPECN.  
JSS-0465-01: 1988 CLASS II (ACCELERATED)  
OIL FINISH.

SURFACE FINISH :- AS PER IS: 3073-67.

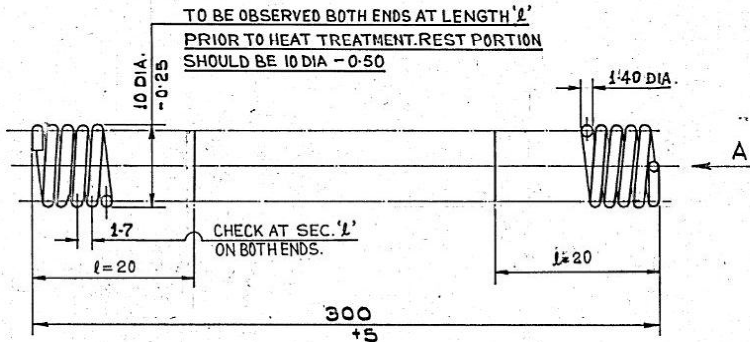
INTERNAL CORNERS ARE 0.4R  
SHARP EDGES TO BE BLUNTED BY 0.2R

ESP 11338

39

26659-SA	02-8-12	D.S. CAT No. ADDED.	
23455	20-8-92	HARDNESS AMENDED	
- SA			
23279-SA	4-3-96	MATERIAL AMENDED	
22871-	20-2-95	ASSY. NO. AMENDED.	
21936-	31-8-92	HARDNESS AMENDED	
- SA			
21836-SA	7-7-92	MATERIAL AMENDED	
21742-SA	13-5-93	DRG. REVISED & RE-DRAWN, PART NO. 4-BA SUPERSEDED BY 12-8/6P7 & PROV. RE-SEALED.	
		PREVIOUS D.C (I) NOS. 19935-SA & 20126-SA	
		BRIEF RECORD.	

DGN.	DATE	NAME	ASSY. NO. 5975-001679	D.S. CAT. No. 5340-182034
DRN.				
CHD.	18.5.92	B.L. NATH	MATERIAL: AS STATED.	CQA(SA) ICHAPU
TRD.			DIMENSIONS ARE IN MILLIMETRES.	
COMP.				
SCALE: 1:2:1			CABLE PROTECTOR	APPROVED. DT. 14.1
SEALD. PROV. D.C (I)			SLEEVE	NEG. PREPARED
19935-SA, Dt. 5.3.88				DESIGNER'S REF
				CISA-617
				PART NO.
				12-8/6P7



DRAWING CONVENTIONS CONFORM TO IS: 696.

TOLERANCE FOR UNTOLERANCED DIMENSIONS SEE 'MEDIUM' IS: 2102

DRAWING PREPARED BY REVERSE ENGINEERING PROCESS

AS SUCH SUITABLE NUMBER OF ADVANCE SAMPLES ARE TO BE

TRIED OUT BY FITMENT & FIRING BY CQA (SA)

BEFORE BULK IS PRODUCED.

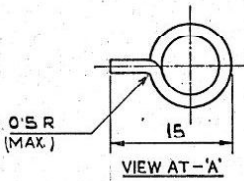
MATERIAL :-

BS 5216:75-SEC.3:HD-GD:3 OR

IS: 4454 P.T.1:1981-SEC.2-GD.3

PROTECTIVE FINISH:

PHOSPHATE TO SPECN. ISS: 0465-01:1988,  
CLASS II (ACCELERATED), OIL FINISH.



MEAN DIA. - 8.30  
WIRE DIA. - 1.40  
NO. OF COIL - 180  
COILING - L.H.

ESP 11339

40

D.S. CAT. No. 5360-042379

REV.	DATE	NAME	DATE	NAME	ASSY. 5975-001679	CQA(SA) ICHAPU
26648-SA	04-7-12	D.S. CAT. No. ADDED.				
23576-SA	18-11-96	MATERIAL AMENDED	DGN.	S.K.P.	MATERIAL - AS STATED	APPROVED DT. 24.11.77
22871-SA	20.2.95	ASSEMBLY NO. ADDED	DRN.	CHD.	DIMENSIONS ARE IN MILLIMETRES	NEG. PREPARED.
		NOTE & DIMENSIONS IN SPRING, VIEW AT 'A', COILING L.H. ADDED & MATERIAL AMENDED	TRD.	COMP.		DESIGNER'S RE
21835-SA	7-7-92					CISA 618.
21742-SA	18-5-92	DRAWING REVISED & REDRAWN, PART NO. 4-2/156-P-42 BHT SUPPLEMENT BY PART NO. 12-11/6772-PROV. 13-7-81			SCALE - 2:1	PART NO.
		PREVIOUS D.C.(I) 19935-SA, 20634-SA			SEALED. PROV. D.C.(I) 19935-SA. DT. 5.3.88	12-11/6P7.
		BRIEF RECORD				

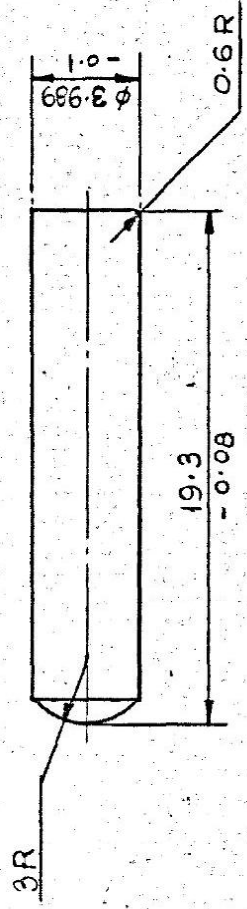
GABLE PROTES  
TOR SPRING.

SCAN



4 3 2 1

DRAWING PREPARED BY REVERSE ENGINEERING PROCESS,  
 AS SUCH SUITABLE NUMBER OF ADVANCE SAMPLES  
 ARE TO BE TRIED OUT BY FITMENT & FIRING BY  
 CQA(SA), BEFORE BULK IS PRODUCED.



MATERIAL: ~~BS1216-75 CODE N5~~  
 G10R 15:4454 PT.1 - 81 GD.1

HARDNESS: ~~37-44 HRC.~~

COATING: ~~X-21-426~~

NOTE: - DURING FINISHING OF DIMENSION  
 AFTER COATING, CHROMIUM LAYER SHOULD  
 BE AT LEAST 0.015 MM THICK.  
 CHROME LAYER THROUGHOUT AT LEAST 0.015 mm.  
 THICK AS PER IS:1337-1980.

65P 11340

41

23543 - SA	1/11/96	MATL. NOTE AMENDED, HARDNESS & COATING DELETED	41
22370 - SA	6-1-94	PART No-12-10/607 WAS 4-23/56-P-428 MT	
21090-24-1-91 SA		DRAWING SEALED PROVISIONALLY	
AUTHY. DATE	ZONE	BRIEF RECORD	SIG.
DRAWING CONVENTIONS		DATE	NAME
CONFORM TO IS:625		DGN.	
TOLERANCES FOR		CHD.	
UNTOLERANCED		TIRD.	
DIMENSIONS SEE		COMP.	
(MEDIUM) IS:1202		DT. 12.10.96 / C.D.O.	
		SCALE: - 5:1	
		SEALED: - PROV. DC(O)	
		21090-SA DT. 24-1-91	

ASSY. 25945-007666	CQA(SA) ICHAUR
MATERIAL: - AS STATED	
DIMENSIONS ARE IN MILLIMETRES	
APPROVED	
FOR (SA) SA	
DESIGNER'S REF.	
CQA(SA) SK-80	
PART No.	
12-10/607	

PUSH ROD





8 7 6 5 4 3 2 1

F

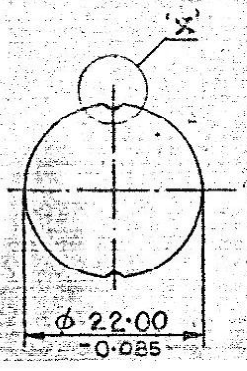
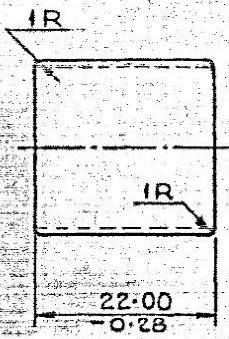
E

D

C

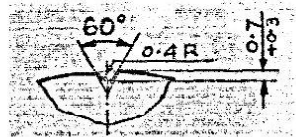
B

A



DRAWING CONVENTIONS CONFORM TO IS: 638.  
TOLERANCES FOR UNDIMENSIONED DIMENSIONS SEE  
"MEDIUM" IS: 102.

DRAWING PREPARED BY REVERSE ENGINEERING  
PROCESS. AS SUCH SUITABLE NUMBER OF  
ADVANCE SAMPLES ARE TO BE TRIED OUT BY  
FITMENT & FIRING BY COAGSAT BEFORE  
BULK IS PRODUCED.



ENLARGED FORM OF 'X'  
SCALE: 1 = 5:1

NOTE:  
CHROME LAYER THROUGHOUT AT LEAST  
0.015 mm THICK AS PER IS: 1397-1980.

MATERIAL:-  
BS: 970 PT: 1-79 GRADE: 040 A 10

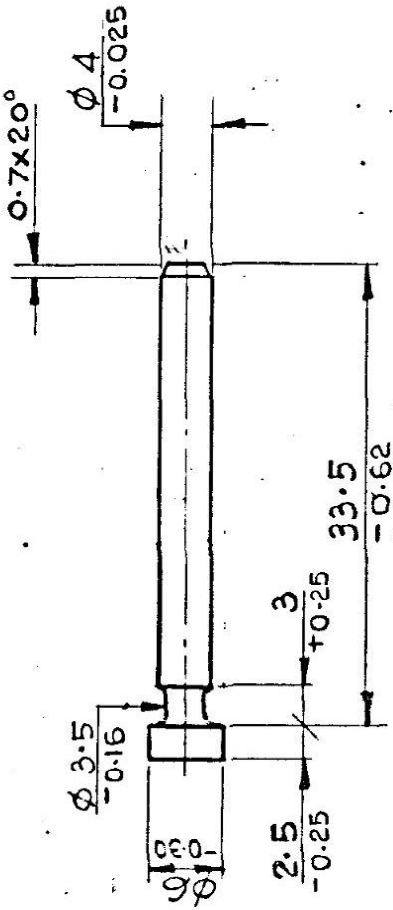
65P 11342

43

DATE	NAME	ASSY. #	COA(SA) ICHAPU
DGN:	DRN:	23945-001666	APPROVED: [Signature]
CHD:	TRD:	MATERIAL:- AS STATED	DESIGNER'S NAME: COA(SA) 01
COMP:	SCALE: - 2:1	DIMENSIONS ARE IN MILLIMETRES	PARTING: 12/28/607
DATE: 5-11-96	NAME: SA	MATERIAL AND NOTE AMENDED. COATING DELETED	
DATE: 6-1-94	NAME: SA	PART No. 12-28/GAT WAS 4-24/56-P-425 MT.	
DATE: 24-1-91	NAME: SA	DRAWING SEALED PROVISIONALLY	
AUTHY.	DATE	ZONE	BRIEF RECORD
			SIG. 24-1-91



ENGINEERING PROCESS, AS SUCH  
 SUITABLE NUMBER OF ADVANCE  
 SAMPLES ARE TO BE TRIED OUT BY  
 FITMENT & FIRING BY CQA(SA) BEFORE  
 BULK IS PRODUCED.



MATERIAL:-  
 BS 970: Pt. 3: 91 Gd 070 M55

OR  
 IS: 5517: 93 DESIGN 55-C8

HARDNESS:-  
 360-444 H.V.  
 PROTECTIVE FINISH:-  
 PHOSPHATE TO SPECN. JSS 0425-01:  
 1988 CLASS II (ACCELERATED) OIL FINISH

65P 11343

44

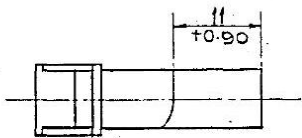
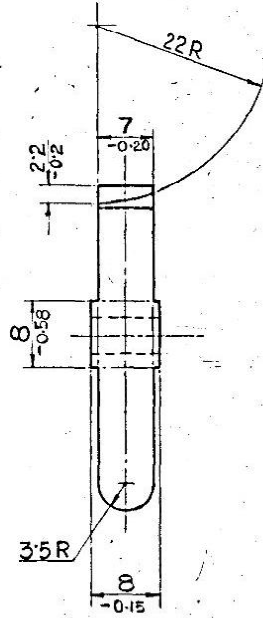
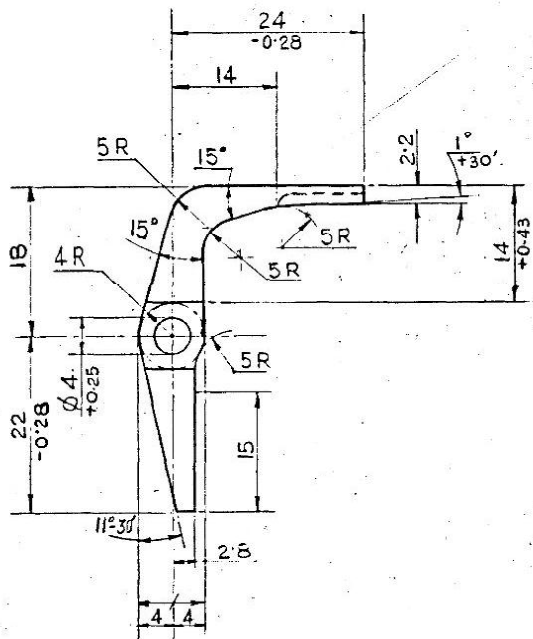
DS-CAT.NO.5315-00777

23-105 -SA	24-196	MATL. & HARDNESS AMENDED	150
22837- SA	27-195	NOMENCLATURE AMENDED AND DS-CAT. NO. ADDED.	150
22141 -SA	13-293	DRG. REVISED, REDRAWN & PROV. RESEALED.	150
		PREVIOUS DC No. 19935-SA, 19987-SA.	COPY
AUTHY:	DATE	ZONE	BRIEF RECORD

DGN:	DATE	NAME
DRN:	W.C.M.W.	
CHD:		
TRD:		
CON:		
DRAWING CONVENTIONS CONFORM TO IS: 696.		
TOLERANCES FOR UNTOL- ERANCED DIMENSIONS		
SEE MEDIUM IS: 2102.		
APPROVED. (NEG PREPARED)		

ASSY. NO. 5945-007666	CQA(SA) ICHAPUR
MATERIAL: -AS STATED DIMENSIONS ARE IN MILLIMETRES	
PIN STRAIGHT HEADED	





OSP 11344

DRAWING PREPARED BY REVERSE ENGINEERING PROCESS, AS SUCH SUITABLE NUMBER OF ADVANCE SAMPLES ARE TO BE TRIED OUT BY FITMENT & FIRING BY CQA(SA), BEFORE BULKS PRODUCED.

DRAWING CONVENTIONS CONFORM TO IS: 696.

TOLERANCES FOR UNTOLERANCED DIMENSIONS SEE MEDIUM IS: 2102.

- NOTE :-
- 1) MACRO ETCH TEST AND DETERMINATION OF INCLUSION CONTENT TO IS: 4163 ARE TO BE CARRIED OUT AS PER COLUMN 'C' OF CQA(SA) NOTE SHEET NO.1.
  - 2) SELECTION OF SAMPLES ARE 2 NOS. UP TO 5 MT. FROM BULK.

MATERIAL :-  
IS: 5517: 93 GA. 50 C.B.

HARDNESS :- 360 - 444 HV

45

PROTECTIVE FINISH :-  
PHOSPHATE TO SPECN: JSS: 0465-DI-1983 CLASS II (ACCELERATED), OIL FINISH.

D.S.CAT.No.1005-007582.

REV	DATE	ZONE	BRIEF RECORD	SIG.
4/	23.405 - SA	24.796	MATL. & HARDNESS AMENDED	
5/	22.277 - SA	20.2.95	ASSEMBLY NO. ADDED	
6/	22.593 - SA	13.7.94	MATL. AND HARDNESS AMENDED & NOTE ADDED	
7/	22.340 - SA	2-12-93	ACCELERATED ADDED IN PROTECTIVE FINISH; NOMENCLATURE AMENDED AND D.S. CAT. NO. ADDED.	
8/	22.144 - SA	13-2-93	DWG. REVISED RE-DRAWN AND PROV. RE-SEALED.	
			PREV. D.C. NOS. 199355A & 20611 - SA.	

DATE	NAME	ASSY	MATERIAL	DIMENSIONS	APPROVED
		5945-007666-3	AS STATED	IN MILLIMETRES	DT. 23/12/93 (NEG PREPARED)
					DESIGNER'S REF.
					CISA-503/10
					D.S. CAT. NO. PART N
					6/17/12-22

D.S.CAT.No.1005-007582