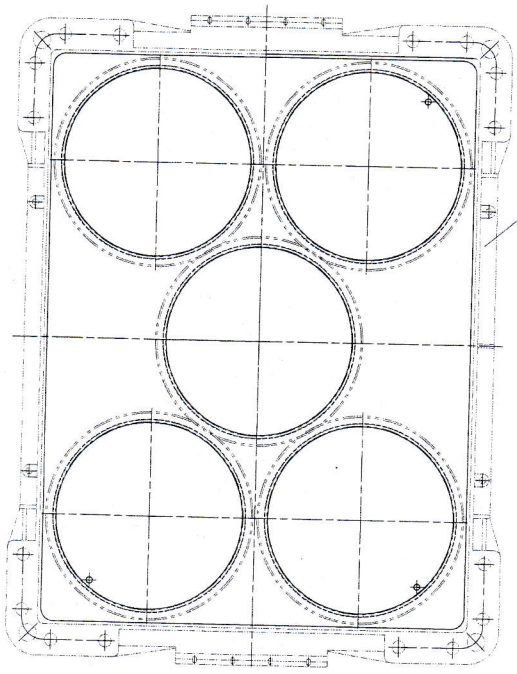


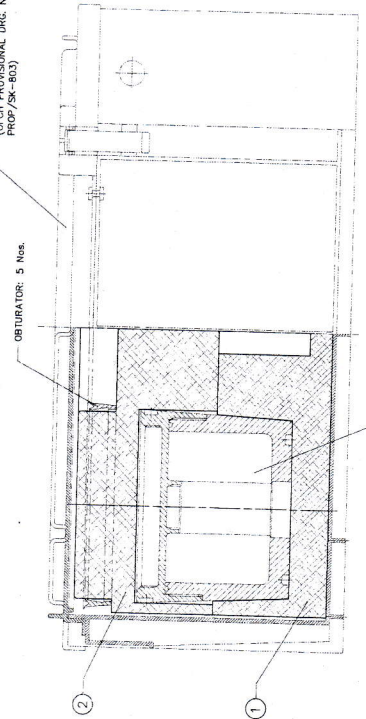
DRG NO. / REV. / ON / DTD / ALL DIMENSIONS ARE IN MM. / GEN. TOL. AS PER IS: 2102 (MED) / FINISH: - / HARDNESS: -

# PROVISIONAL



TOP VIEW WITHOUT SHOWING LID

PROPOSED PLASTIC PACKING BOX. (OFCH PROVISIONAL DRG. No. PROP/5K-803)

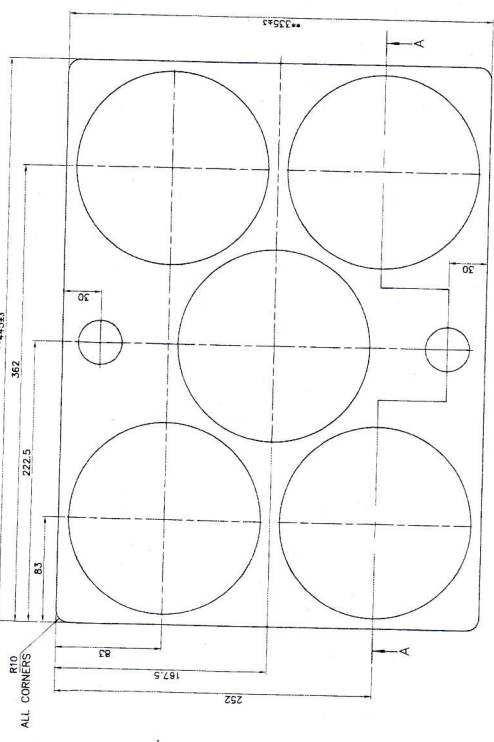


155mm BASE BLEED MOTOR ASSEMBLY (FILLED): 5 Nos.

PROPOSED PACKING FITMENT FOR 155mm BASE BLEED MOTOR ASSEMBLY (FILLED): 5 Nos. IN L BOX. SCALE:-1:2

- GENERAL NOTES:
- 1) \* MARKED DIMENSIONS ARE TO SUIT DIMNS. OF 155mm BASE BLEED MOTOR ASSEMBLY.
  - 2) \*\* MARKED DIMENSIONS ARE TO SUIT DIMNS. OF EXISTING BOX.
  - 3) \*\*\* MARKED DIMENSIONS ARE TO SUIT DIMNS. OF ORBITATOR.
  - 4) DIMENSIONS OF THE PROPOSED PACKING FITMENT IS TO SUIT THE INTERNAL DIMS. OF EXISTING BOX.
  - 5) FOR PACKING BOX, REFER OFCH PROVISIONAL DRG. No. PROP/5K-803.
  - 6) THIS DRG. IS ONLY FOR REFERENCE PURPOSE.

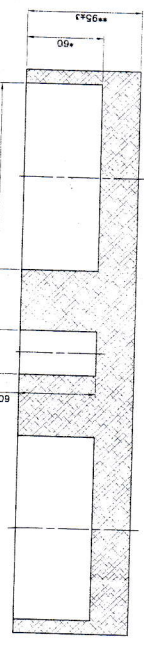
# PROVISIONAL



1

## BOTTOM FOM

MATL:- EXPANDED POLYTHENE FOAM OLIVE GREEN  
AS PER SPECN. No. IND/ME/913(G) (PROV.), 2004  
REVISION No. 1  
SCALE :- 1:2  
NO. OFF :- 1

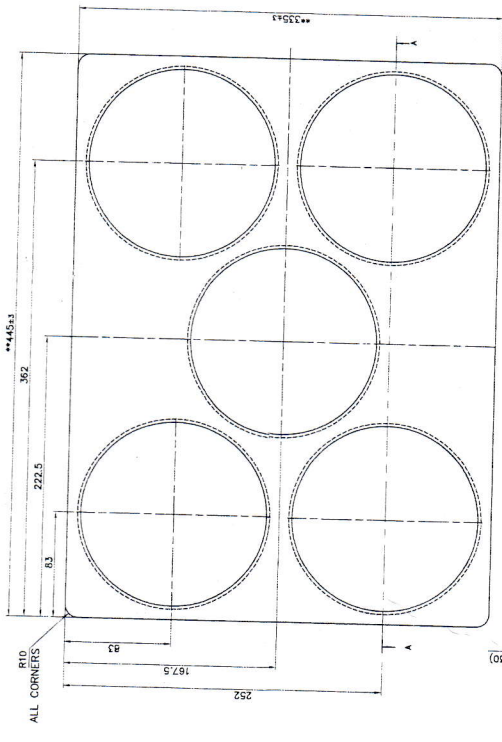


SECTION A-A

2

## TOP FOM

MATL:- EXPANDED POLYTHENE FOAM OLIVE GREEN  
AS PER SPECN. No. IND/ME/913(G) (PROV.), 2004  
REVISION No. 1  
SCALE :- 1:2  
NO. OFF :- 1



2

## TOP FOM

ITEM NO.	AS STATED	MATERIAL	NO.OFF	NOMENCLATURE	REMARKS
2	EXPANDED POLYTHENE FOAM		1	TOP FOM	
1	EXPANDED POLYTHENE FOAM		1	BOTTOM FOM	

ASSEMBLY & STORE DRG. NO. DRG. NO. :- PROP/5K-802  
(CAL. 5 Nos. IN L BOX)

PROPOSED PACKING FITMENT FOR 155mm BASE BLEED MOTOR ASSEMBLY (FILLED): 5 Nos. IN L BOX. SCALE:-1:2

3110101 3110101 3110101 3110101

PROPOSED PACKING FITMENT FOR 155mm BASE BLEED MOTOR ASSEMBLY (FILLED): 5 Nos. IN L BOX. SCALE:-1:2

PREPARED BY: [Signature] DATE: [Date]  
CHECKED BY: [Signature] DATE: [Date]  
APPROVED BY: [Signature] DATE: [Date]

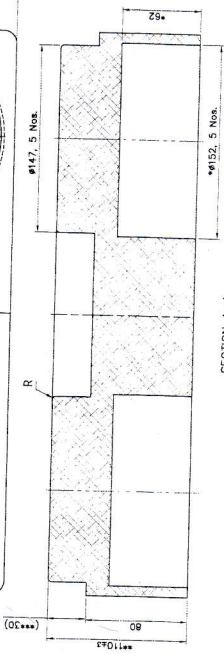
DRG. NO. / REV. / ON / DTD / ALL DIMENSIONS ARE IN MM. / GEN. TOL. AS PER IS: 2102 (MED) / FINISH: - / HARDNESS: -

REVISIONS

NO.	DATE	DETAILS	INT.
1			

SHEET: 1 OF 1

# PROVISIONAL



SECTION A-A