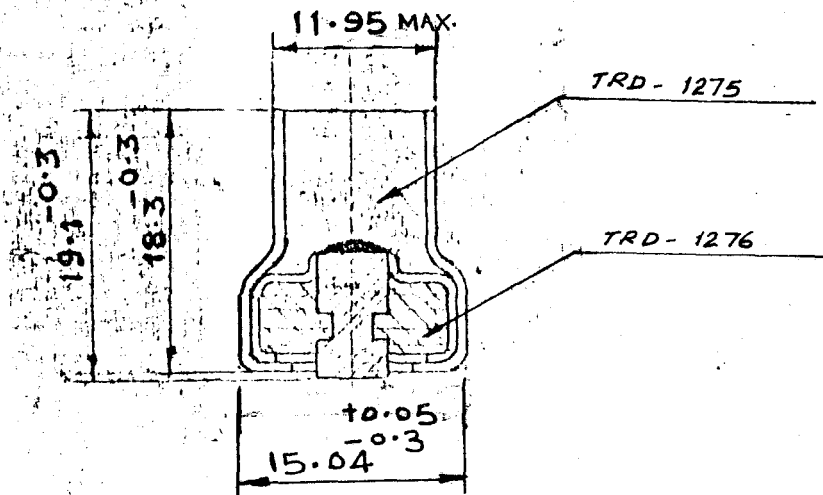



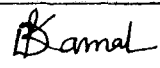
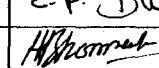
DRG. CONVENTIONS CONFORM TO IS : 696
 DIMNS. ARE IN MM UNLESS OTHERWISE STATED

NOTES-

RESISTANCE OF THE CARTRIDGE
 SHOULD BE BETWEEN 0.09 TO 0.20 ohms.

NO BULGING ON OD 11.95 IS PERMITTED.



 (S.M.S. GOUR) C'D/M VETTED	 (D.P. KAMAL) J.S.O. A.A.I.W./APRD.	DATE - 2-4-91	DRAWN	BY XEROX M/C
			CHECKED	C.P. Duragi
			F/CDO	 0.3.91
FOR PLANNING AND TRADE ENQUIRIES ONLY			MATERIAL-	
THIS DOCUMENT IS THE PROPERTY OF GOVT. OF INDIA, MINISTRY OF DEFENCE & IS ISSUED FOR THE PURPOSE OF DEVELOPING / MANUFACTURING STORES REQUIRED FOR DEFENCE USE. IT MUST NOT BE REPRODUCED / DISCLOSED TO ANY THIRD PARTY OR USED FOR ANY CIVIL PURPOSE.			DIMNS. ARE IN MM.	
			PROJECTION THIRD ANGLE.	
			SCALE :- 2:1	
			ORD. FY. KHAMARIA.	
<u>CARTG. PP3 ELECTRIC OPERATING, FIRE EXTINGUISHER EMPTY (ASSY.)</u>			DRG. No.	
			TRD :- 1279	
			No. OF SHTS.-	SHEET No.-

DRG. CONVENTIONS CONFORM TO IS: 696
 DIMNS. ARE IN mm. UNLESS OTHERWISE STATED

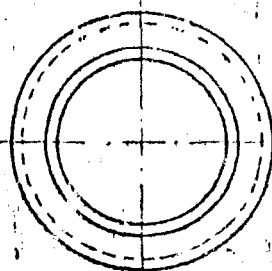
TOLERANCES FOR UNTOLERANCED DIMNS								
ABOVE	-	5	30	120	315	1000	2000	4000
UP TO	6	30	120	315	1000	2000	4000	-
TOLS	±0.1	±0.2	±0.3	±0.5	±0.8	±1.2	±2	±3

NOTE :-

ALL SHARP EDGES &
 BURRS ARE TO BE
 REMOVED

ALL DIMENSIONS ARE TO
 BE READ AFTER TIN PLATING

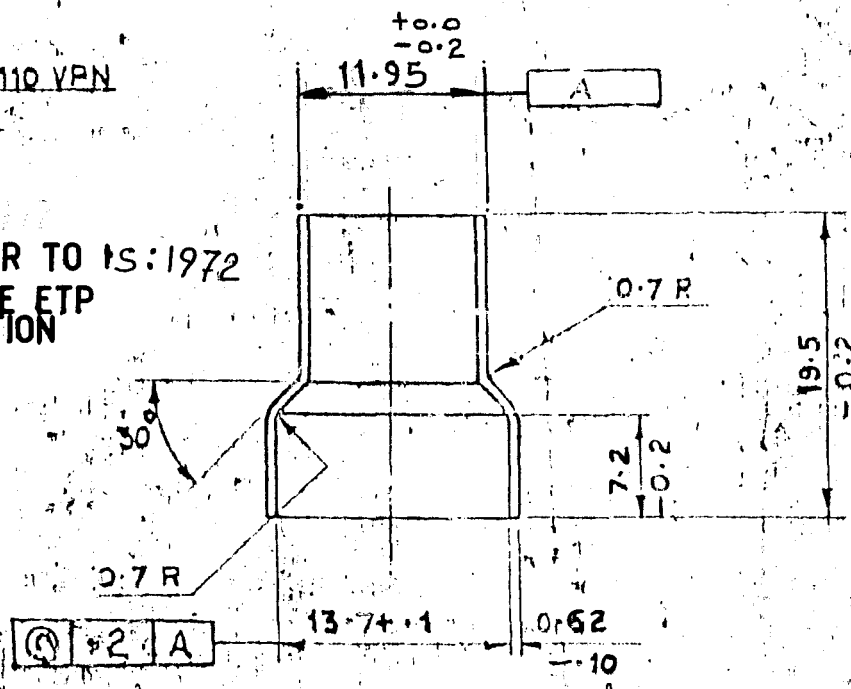
NO BULGING ON OD 11.95
 IS PERMITTED.



HARDNESS 95 TO 110 VHN
 AT 2.5 Kg LOAD

MATL.:-

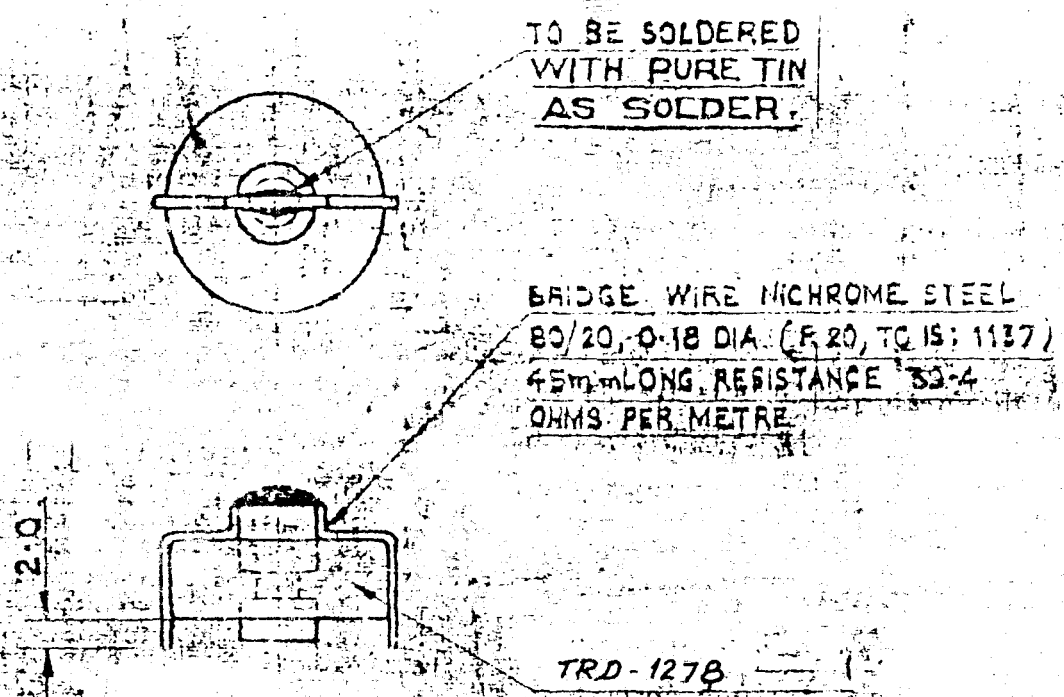
COPPER TO IS:1972
 GRADE ETP
 ANNEALED CONDITION



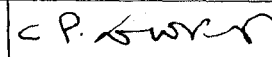



PROTECTIVE FINISH:- TIN COATED TO SPEC. IS:1359 CLASS SN 15 C

 (S.M.S. GOUR) C'D/M VETTED	 (D.P. KAMAL) J.S.O. A.A.I.W/APPD.	DATE:-2-4-91	DRAWN	XEROX COPY
			CHECKED	C.P. LEWIS
			FLCDO	H.H. Sharma 15.2.91
FOR PLANNING AND TRADE ENQUIRIES ONLY			MATERIAL- AS ABOVE	
THIS DOCUMENT IS THE PROPERTY OF GOVT. OF INDIA, MINISTRY OF DEFENCE & IS ISSUED FOR THE PURPOSE OF DEVELOPING / MANUFACTURING STORES REQUIRED FOR DEFENCE USE. IT MUST NOT BE REPRODUCED / DISCLOSED TO ANY THIRD PARTY OR USED FOR ANY CIVIL PURPOSE.			DIMNS. ARE IN MM.	
			PROJECTION THIRD ANGLE.	
			SCALE :- 2:1	
<h1>CASE</h1>			ORD.FY.KHAMARIA.	
			DRG.No. TRD :- 1275	
			No. OF SHTS. -	SHEET NO. -

DRG CONVENTIONS CONFORM TO IS: 696
DIMNS. ARE IN mm. UNLESS OTHERWISE STATED

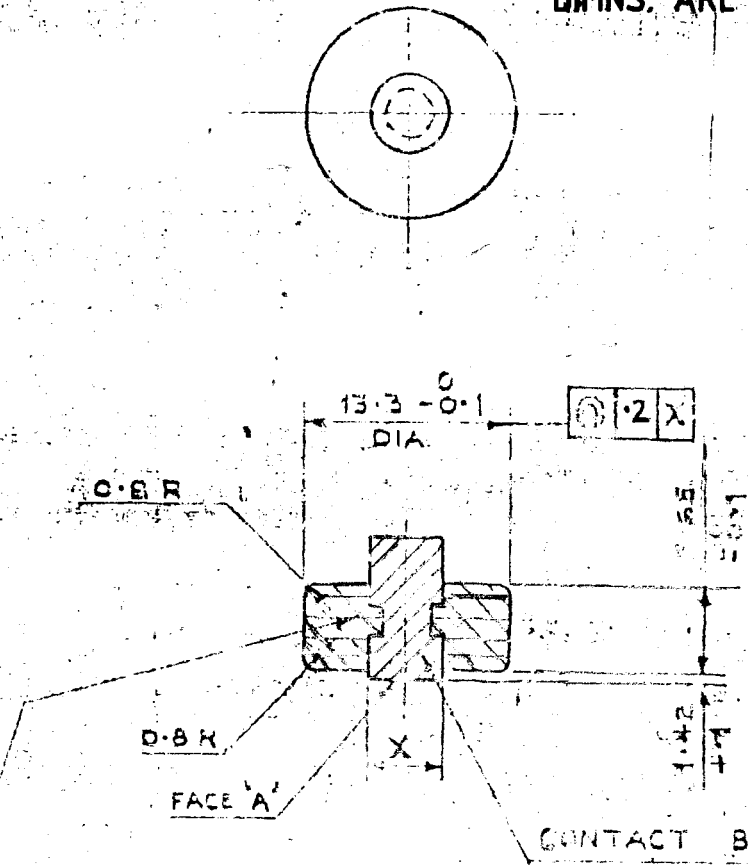


 (S.M.S. GOUR) C.D/M VETTED	 (D.P. KAMAL) J.S.O A.A.I.W/APPD.	DATE - 8.3.91	DRAWN	XEROX COPY
			CHECKED	
			F/CDO	 15.2.91
FOR PLANNING AND TRADE ENQUIRIES ONLY			MATERIAL - AS ABOVE	
THIS DOCUMENT IS THE PROPERTY OF GOVT. OF INDIA, MINISTRY OF DEFENCE & IS ISSUED FOR THE PURPOSE OF DEVELOPING / MANUFACTURING STORES REQUIRED FOR DEFENCE USE. IT MUST NOT BE REPRODUCED / DISCLOSED TO ANY THIRD PARTY OR USED FOR ANY CIVIL PURPOSE.			DIMNS ARE IN MM.	
			PROJECTION THIRD ANGLE.	
			SCALE : 2 : 1	
CONTACT BOLT ASSM			ORD. FY. KHAMARIA.	
			ORG No. TRD :- 1276	
			No. OF SHTS. -	SHEET No. -

DRG. CONVENTIONS CONFORM TO IS: 696

TOLERANCES		FOR UNTOLERANCED DIMNS						
ABOVE	-	.6	30	120	315	1000	2000	4000
UP TO	6	30	120	315	1000	2000	4000	-
TOL	±0.1	±0.2	±0.3	±0.5	±0.8	±1.2	±2	±3

DIMNS. ARE IN mm. UNLESS OTHERWISE STATED



INSULATING MATERIAL

TO BE INSERTED WHILE MOULDED
 MOULDING POWDERS, MOULDED PLASTICS
 (PHENOLIC) GRADE A TO SPEC. ISS. 1497

 (S.M.S. GOUR) C'D/M VETTED	 (D.P. KAMAL) J.S.O. A.A.I.W/APPD. DATE-8-3-91	DRAWN	XEROX COPY
		CHECKED	C.P. GURRAY
		F/CDO	H. Khamaria 15.2.91

FOR PLANNING AND TRADE ENQUIRIES ONLY

THIS DOCUMENT IS THE PROPERTY OF GOVT. OF INDIA, MINISTRY OF DEFENCE & IS ISSUED FOR THE PURPOSE OF DEVELOPING / MANUFACTURING STORES REQUIRED FOR DEFENCE USE. IT MUST NOT BE REPRODUCED / DISCLOSED TO ANY THIRD PARTY OR USED FOR ANY CIVIL PURPOSE.

MATERIAL - AS ABOVE
 DIMNS. ARE IN MM.
 PROJECTION THIRD ANGLE.
 SCALE - 2:1

PIECE INSULATING

ORD. FY. KHAMARIA
 DRG. No. TRD - 1278
 No. OF SHTS. SHEET No. -

AMENDMENTS.

INSP	DATE	HOS/CAD	D.A. No.
	05/09/14	<i>[Signature]</i>	14/14

DRG CONVENTIONS CONFORM TO IS: 696

TOLERANCES FOR UNTOLERANCED DIMNS

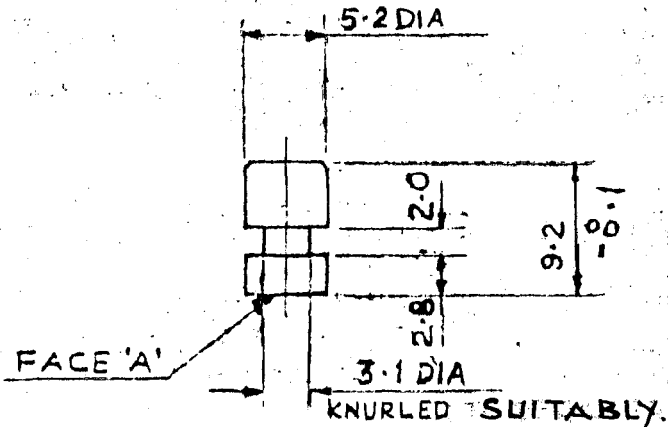
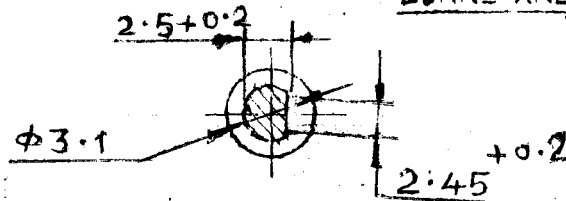
ABOVE	-	6	30	120	315	1000	2000	4000
UP TO	6	30	120	315	1000	2000	4000	-
TOLS.	± 0.1	± 0.2	± 0.3	± 0.5	± 0.8	± 1.2	± 2	± 3

NOTE - AMENDED AS PER ARDE-1231

AUTHORITY No. ARDE/17/6(1)
84-T/A Dt. 10-OCT-2013

NOTE :-

ALL SHARP EDGES & BURRS ARE TO BE REMOVED



NOTE 1 -

BRASS TO SPECN. IS: 8364-1989 Gr. II

 (S.M.S. GOUR) C.D/M VETTED	 (D.P. KAMAL) J.S.O A.A.I.W/APPD.	DATE - 8-3-91	DRAWN	XEROX COPY
			CHECKED	C.P. <i>[Signature]</i>
			F/CDO	<i>[Signature]</i> 15.2.91

FOR PLANNING AND TRADE ENQUIRIES ONLY

MATERIAL - BRASS TO IS: 8364-1977 TYPE I

THIS DOCUMENT IS THE PROPERTY OF GOVT. OF INDIA, MINISTRY OF DEFENCE & IS ISSUED FOR THE PURPOSE OF DEVELOPING / MANUFACTURING STORES REQUIRED FOR DEFENCE USE. IT MUST NOT BE REPRODUCED / DISCLOSED TO ANY THIRD PARTY OR USED FOR ANY CIVIL PURPOSE.

DIMNS. ARE IN MM.

PROJECTION THIRD ANGLE.

SCALE :- 2:1

ORD. FY. KHAMARIA.

CONTACT, BOLT

DRG. No.

TRD :- 1277a

No. OF SHTS. -

SHEET No. -