

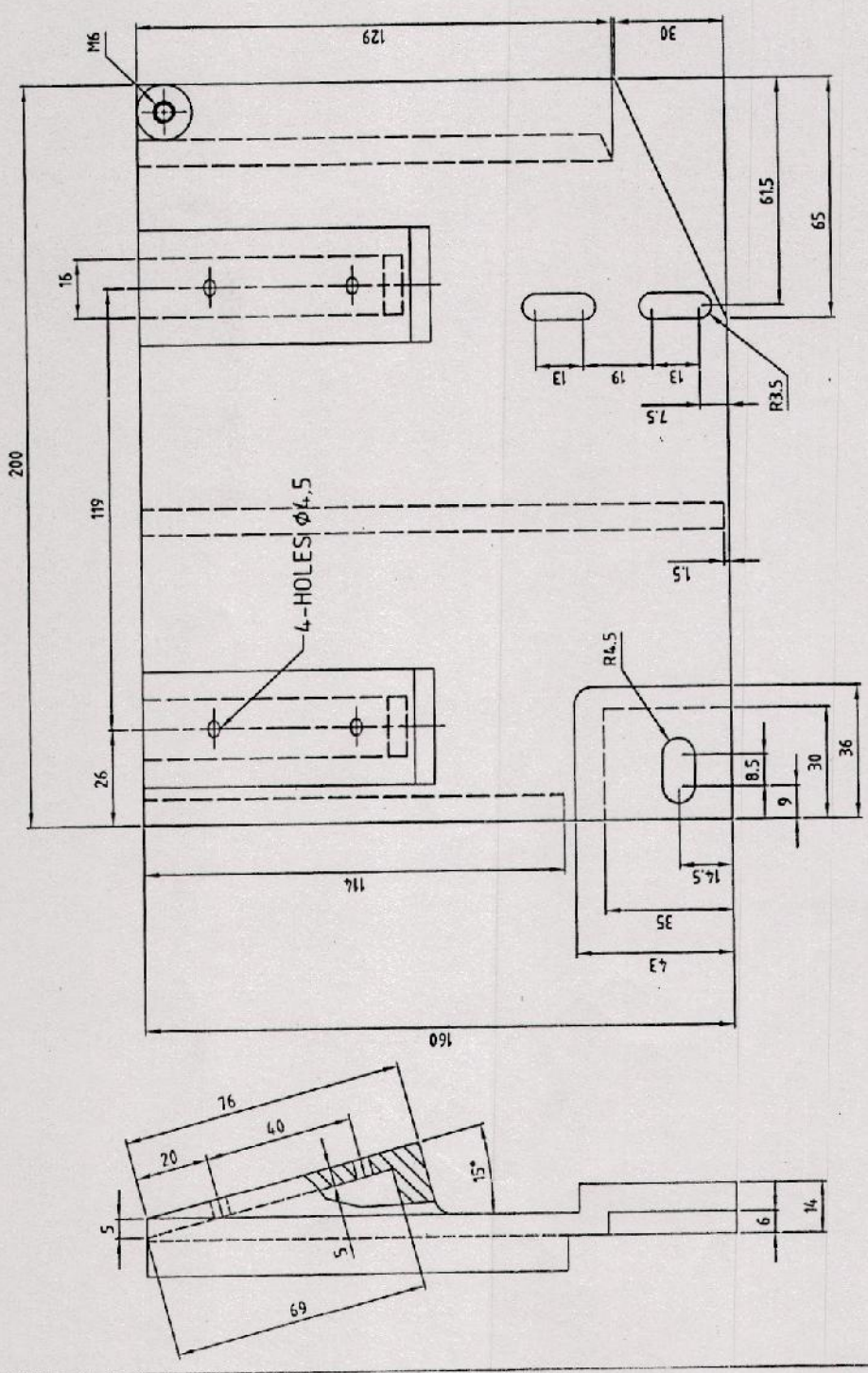
STANDARD RUSSAIN CONNECTOR
 MODEL NO: 10SL-4P
 MAKE: HI-TECH AMPHENOL ONLY ACCEPTABLE

STANDARD RUSSAIN CONNECTOR
 MODEL NO: 14S-5P
 MAKE: HI-TECH AMPHENOL ONLY ACCEPTABLE

FIG. 02---CONTROL UNIT

226117
 9 of 18

I 26117



NOTE:-- 1) UNSPECIFIED RADIUS IS R2
 2) REMOVE ALL SHARP EDGES
 3) MATERIAL: ALUMINIUM CASTING

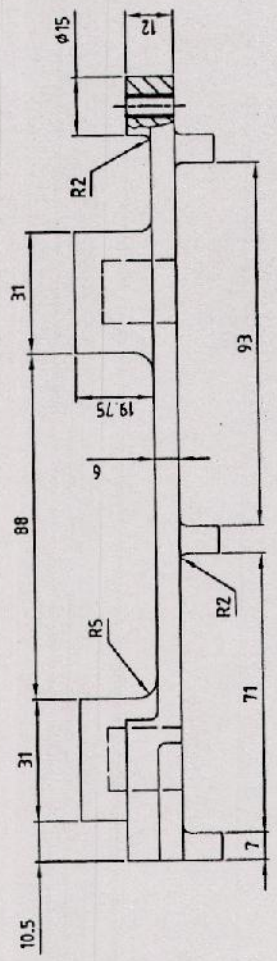
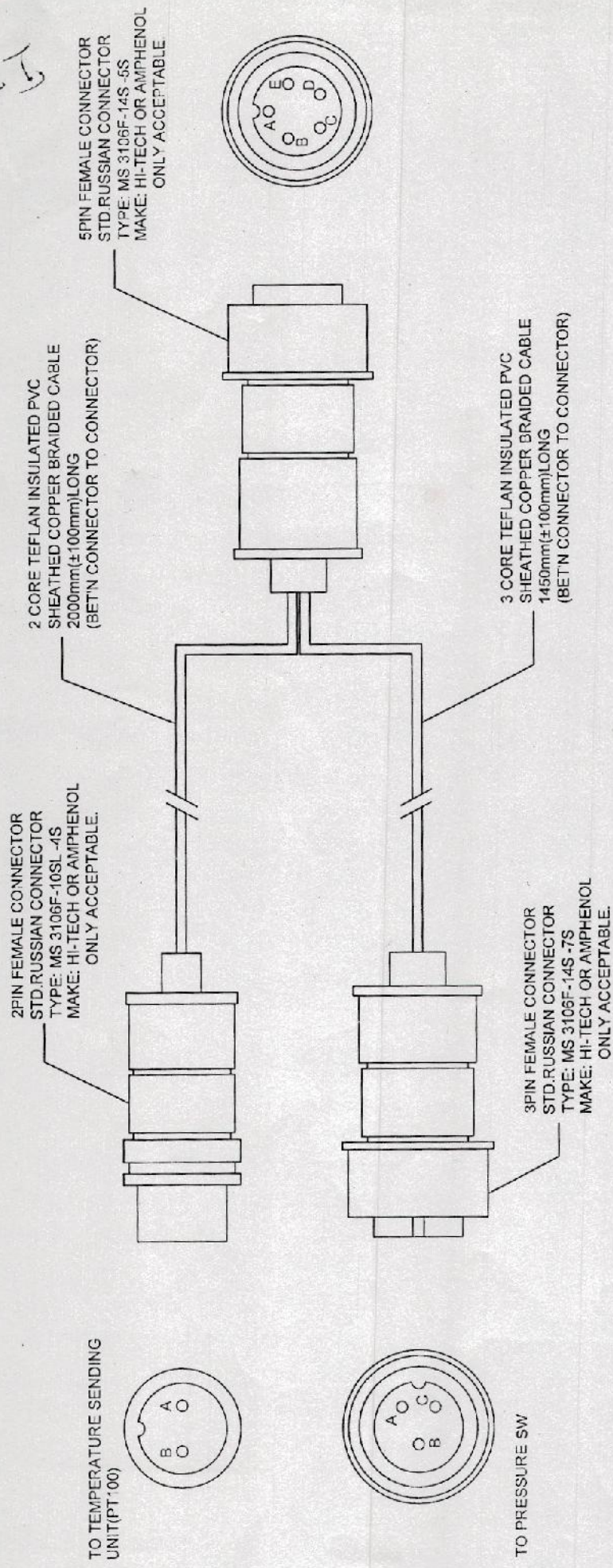


FIG.3--MOUNTING BRACKET

I 26117
 10 of 18

211925

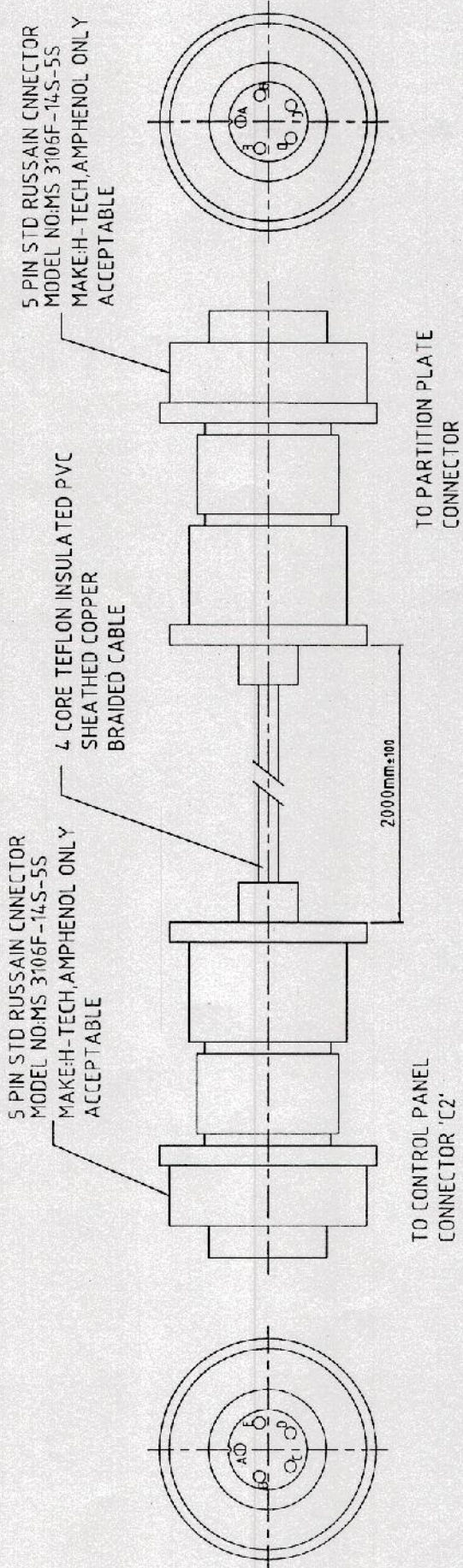


COLOUR CODE	2 PIN CONNECTOR	3 PIN CONNECTOR	5 PIN CONNECTOR
RED	A	A
WHITE	B	B
.....	C
RED	A	D
WHITE	B	E
.....	C	E

FIG.04-- SENSOR CABLE ASSY

I26117
11 9 18

26117



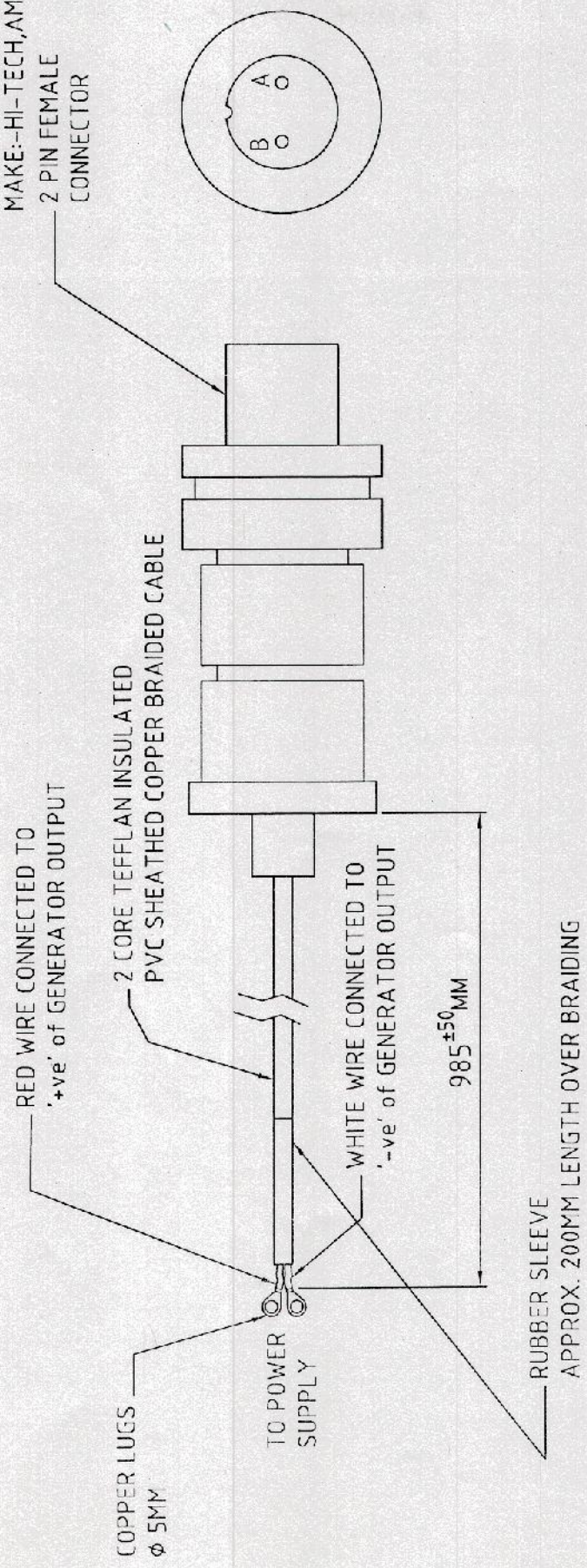
COLOUR CODE	5 PIN FEMALE CONNECTOR (CONTROL PANEL)	5 PIN FEMALE CONNECTOR (PARTITION PLATE)
BLACK	A	A
BROWN	B	E
---	C	D
RED	D	C
ORANGE	E	B

FIG. 5--CONTROL PANEL CABLE ASSY

I 26117
12 of 18

I 26117

STD RUSSION CONNECTOR
 MODEL NO: MS 3106F-10SL-45
 MAKE:-HI-TECH, AMPHENOL ONLY
 2 PIN FEMALE
 CONNECTOR



COLOUR	2 PIN FEMALE CONNECTOR CODE
RED	A
WHITE	B

I 26117
 13 of 18

FIG.6-- POWER SUPPLY CABLE ASSY.

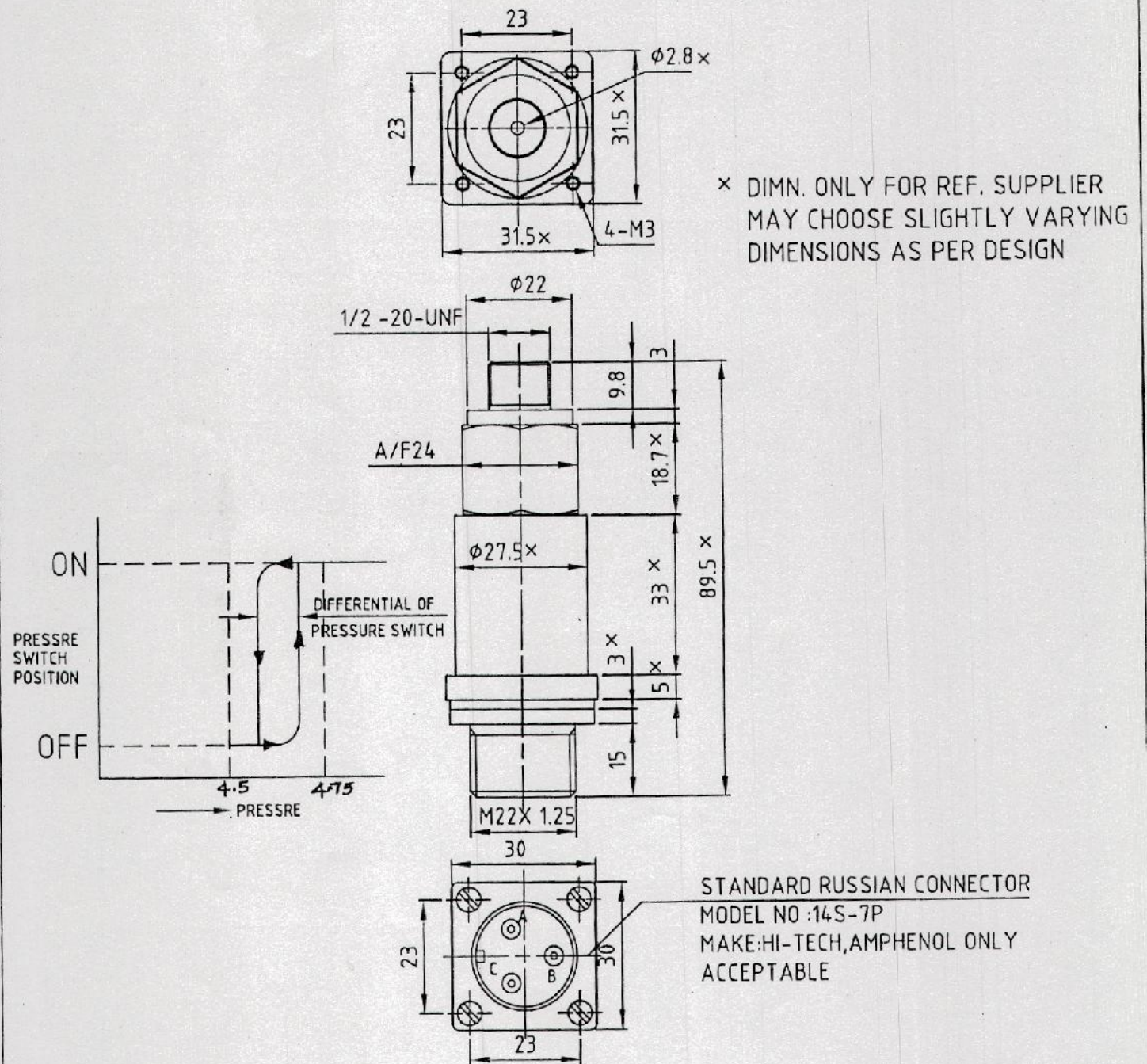
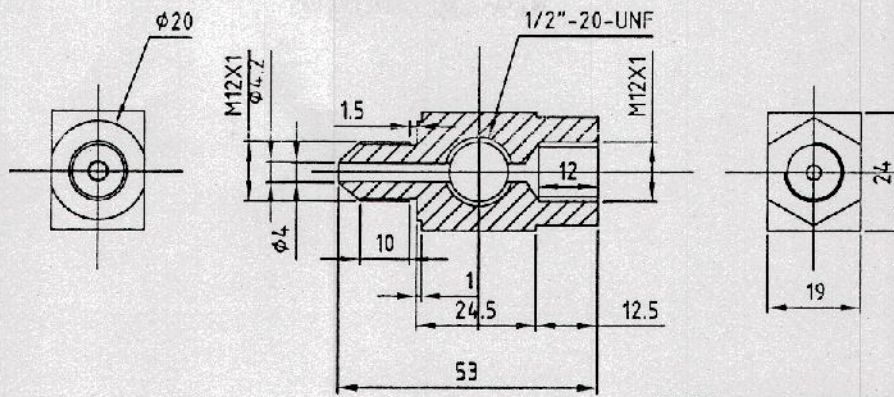


FIG.7 -- PRESSURE SWITCH

I26117

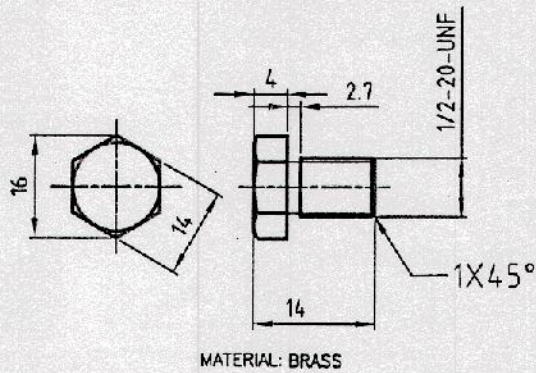
I26117

14 of 18



MATERIAL: STAINLESS STEEL TO GRADE AISI 303

FIG.08--4WAY CONNECTOR FOR PRESSURE TRANSDUCER

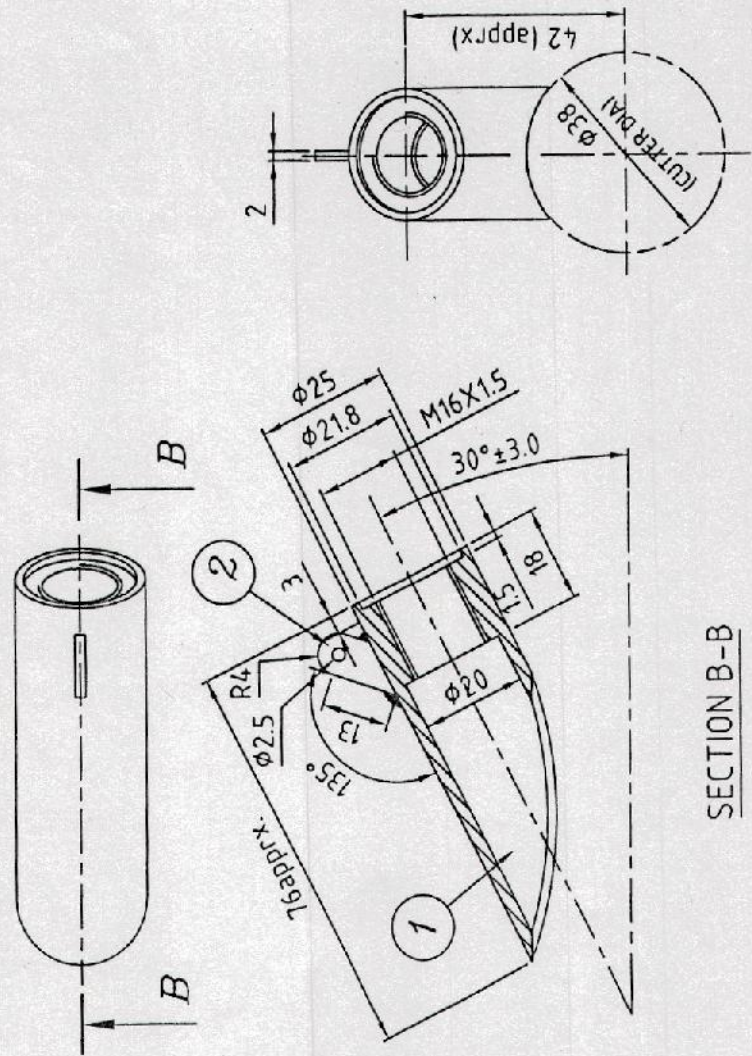


MATERIAL: BRASS

FIG.9--BLINDING PLUG

126117

I26117



- INSTRUCTIONS:
1. Deburr Holes Properly.
 2. Weld part no. 2 plate as shown in Drg.
 3. Remove Spatters & Clean welded joints.
 4. Powder coating (Black) the assy.

SECTION B-B

FIG.11-- PIPE PIECE

s/No	Nomenclature	Qty	Matl
2	PLATE	1	MS
1	PIPE	1	C45

I26117
17 of 18