
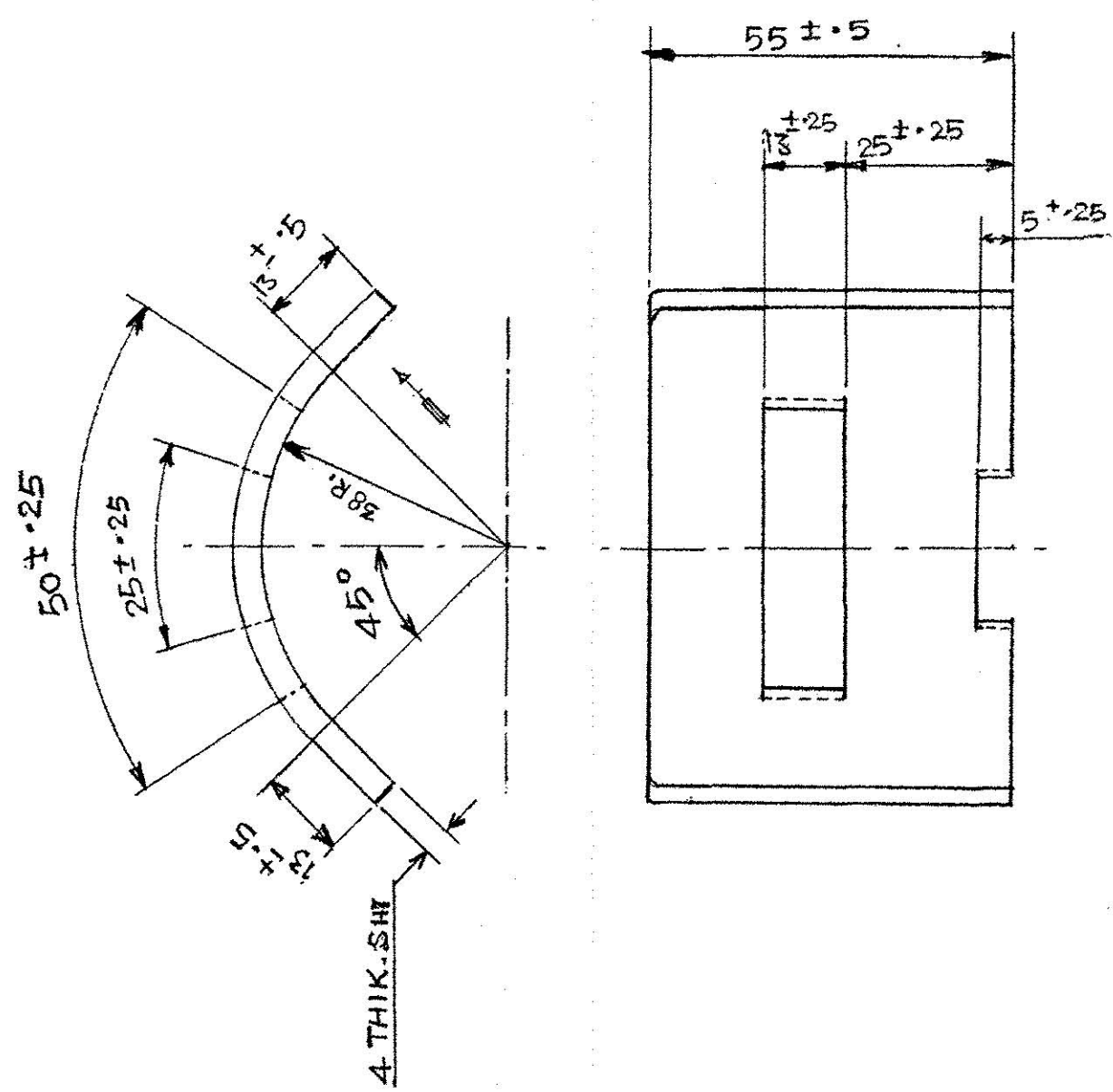


FOR EXPLANATION OF DIMENSIONING ETC. SEE ARDE NOTE SHEET NO.1
DIMNS ARE IN MM.

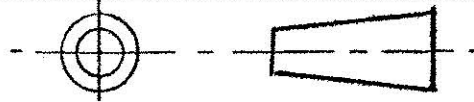
DRG No
ARDE 1248
DET No 2 SHTS


VIEW IN DIRECTION OF ARROW.



Issue to the CM, A.F., Dum Dum
 प्रमाणित तथा निरीक्षण विभाग के द्वारा प्रमाणित
 Certified Suitable for quick Manufacture
 Inspected
 Date: 06/09/18
 Signature: [Signature]
 Foreman
 Directorate General of Aeronautical Quality Assurance

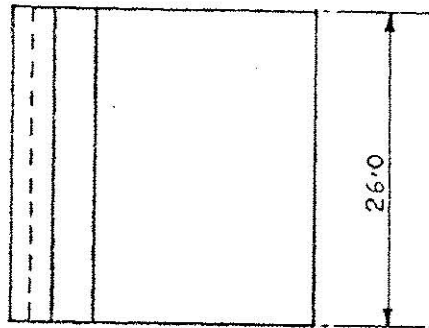
IMP.:- BASED ON ARM DRG. NO 1253A 25
HEIGHT OF PLATE REDUCED FROM 67 TO 55

| | | | | |
|---|---------|---|-----------|---|
| DRN: NCA | CHD. SA | TRD B... | COMP. ... | ASSY. DRG. ARDE 2269/2 |
| CD | | SCALE :- 1:1 | EST MASS: | DESIGN AUTHORITY |
| APPROVED. | | GAUGE SCHED. | DATE: | ARDE PUNE 411021 |
| MATL:- STEEL TO SPEC. B.S. 1449 EN 2 A. | | | |  |
| DRG SEALED (PROV) | | PROTECTIVE FINISH:- SEE DRG NO. ARM 1253 D 18 | | DRG No. ARDE 1248 |

CORNER PLATE

DET No 2 SHTS SHT. NO
 PART No.
 D.S. CAT. NO.
 A.H.S.P.

PART No 4 3 2 1
 FOR EXPLANATION OF DIMENSIONING, ETC., SEE ARDE NOTES HT. No. 1
 THIRD ANGLE PROJECTION. DIMENSIONS ARE IN MILLIMETRES.



Issue to the GM, O.F.,
 Dum Dum

उत्पादन द्वारा विशेष निरीक्षण के योग्य प्रमाणित
 Certified Suitable for quick Manufacture
 - Inspected

दिनांक: 06/09/18

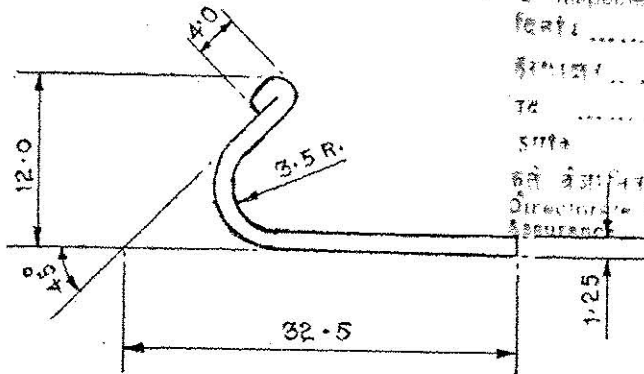
Signature: [Signature]

Foreman

Director's Office

Director's Office

Director's Office



MATERIAL:—

M.S. TO SPEC: IS: 513-TYPE 'O' OR
 IS-1570, C-20 COLD ROLLED.

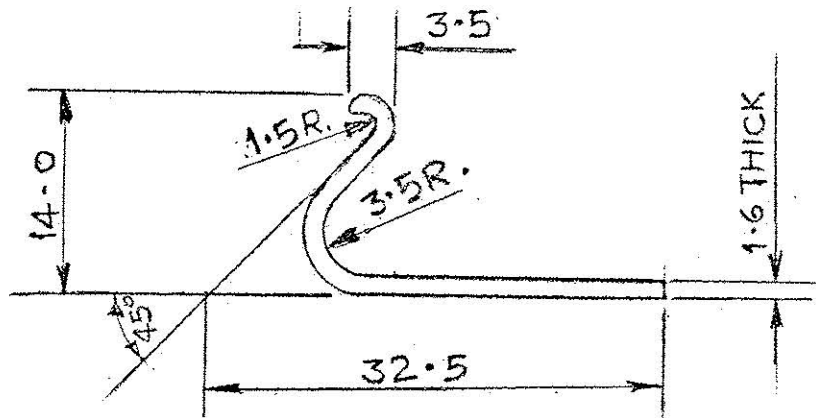
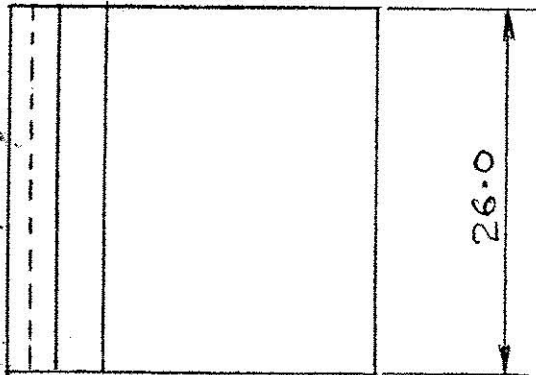
| | | | | | | | |
|-------------------|--|-------------|--|--------------------------------|--|-------------|--|
| | | | | ASSY. DRG. ARDE 1248/1, SHT. 1 | | | |
| | | | | INSP INSTRS | | | |
| DRAWN | | CHECKED | | TRACED | | TRN CHD | |
| S.S.A. | | [Signature] | | [Signature] | | [Signature] | |
| CHIEF D'MAN | | | | GROUP OFFICER | | | |
| Sd- | | | | Sd- | | | |
| APPROVED | | | | Sd- FOR DIRECTOR | | | |
| DATE: 26-4-77 | | | | DATE: 3-11-73 | | | |
| AUTHORITY | | | | ARDE 1248 | | | |
| ZONE | | | | DETAIL No. 3 | | | |
| DRG. RE-TRACED | | | | PART No. | | | |
| NATURE | | | | ARDE, PASHAN, PUNE-21 | | | |
| AMENDMENTS | | | | | | | |
| SEALED | | | | | | | |
| MATERIAL AS ABOVE | | | | | | | |
| PROTECTIVE FINISH | | | | | | | |
| ESTIMATED WEIGHT | | | | | | | |
| SCALE 2:1 | | | | | | | |
| CLIP | | | | | | | |

PART NO.
 DET. No. 4 SHTS
 ARDE 1248
 DRG. NO.

FOR EXPLANATION OF DIMENSIONING,
 ETC., SEE ARDE NOTE SHEET NO. 1
 DIMENSIONS ARE IN MILLIMETRES.

Issue to the QM,
 O.A., Dem Dum

उत्पादन तथा निरीक्षण विभाग के द्वारा प्रमाणित
 Certified Suitable to Quick Manufacture
 Inspected
 दिनांक Date 06/09/18
 हस्ताक्षर Signatures M. S.
 पद Rank Foreman
 इकाई S No
 कृषि वैज्ञानिक प्रयोगशाला, अणुवैज्ञानिक सुरक्षा विभाग
 Directorate General of Aeronautical Quality
 Assurance



BASED ON SK. NO. ARM21/730 F.D.T. D&P (AIR) MINISTRY OF DEFENCE

| | | | | | | |
|------|---------|-----------|--------------|------|------|----|
| 1 | 20/9/18 | | RETRACED | | | |
| R NO | DATE | AUTHORITY | BRIEF RECORD | ZONE | CD | GO |
| | | | | | SIGN | |

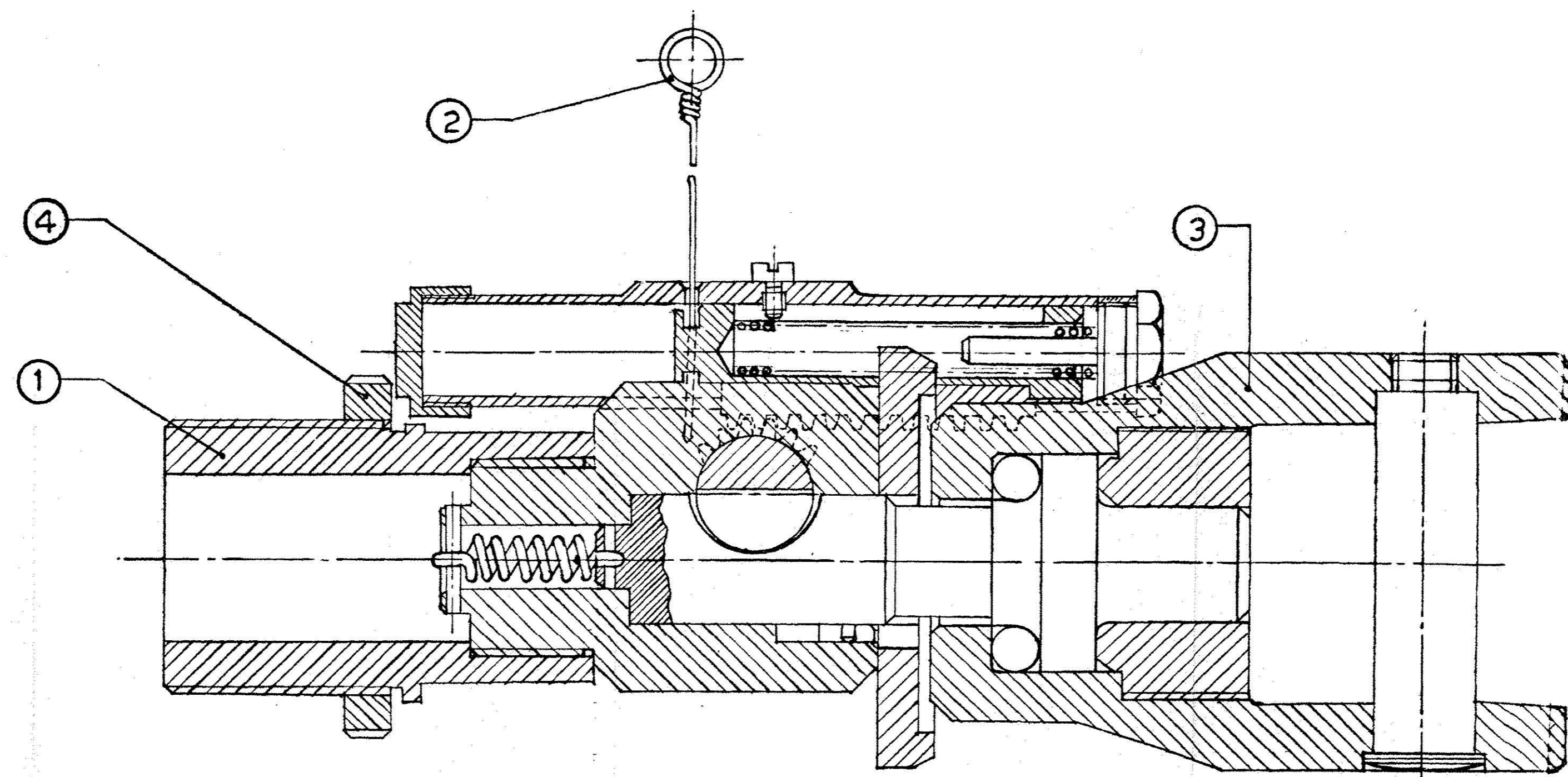
DRG. SEALED (PROV)

| | | | | |
|---|------------|--------------|-----------|-----------------------------|
| DRM. : sl/ | CHD sl/ | TRD Bl/ | COMP. ✓ | ASSY DRG ARDE 1248/4 SHT. 1 |
| CD sl/ | PASSED sl/ | SCALE: 2:1 | EST MASS: | DESIGN AUTHORITY |
| APPROVED | | GAUGE SCHED. | DATE: | ARDE PUNE - 411021 |
| MATERIAL: STEEL TO IS: 1570. C-20, COLD ROLLED SHEET. | | | | |
| PROTECTIVE FINISH: ✓ | | | | DRG. NO. |
| TITLE: <u>ALTERNATIVE CLIP</u> | | | | ARDE 1248 |
| | | | | DET. No. 4 SHTS SHT NO |
| | | | | PART NO |
| | | | | D.S. CAT. No |
| | | | | A.H.S.P. |

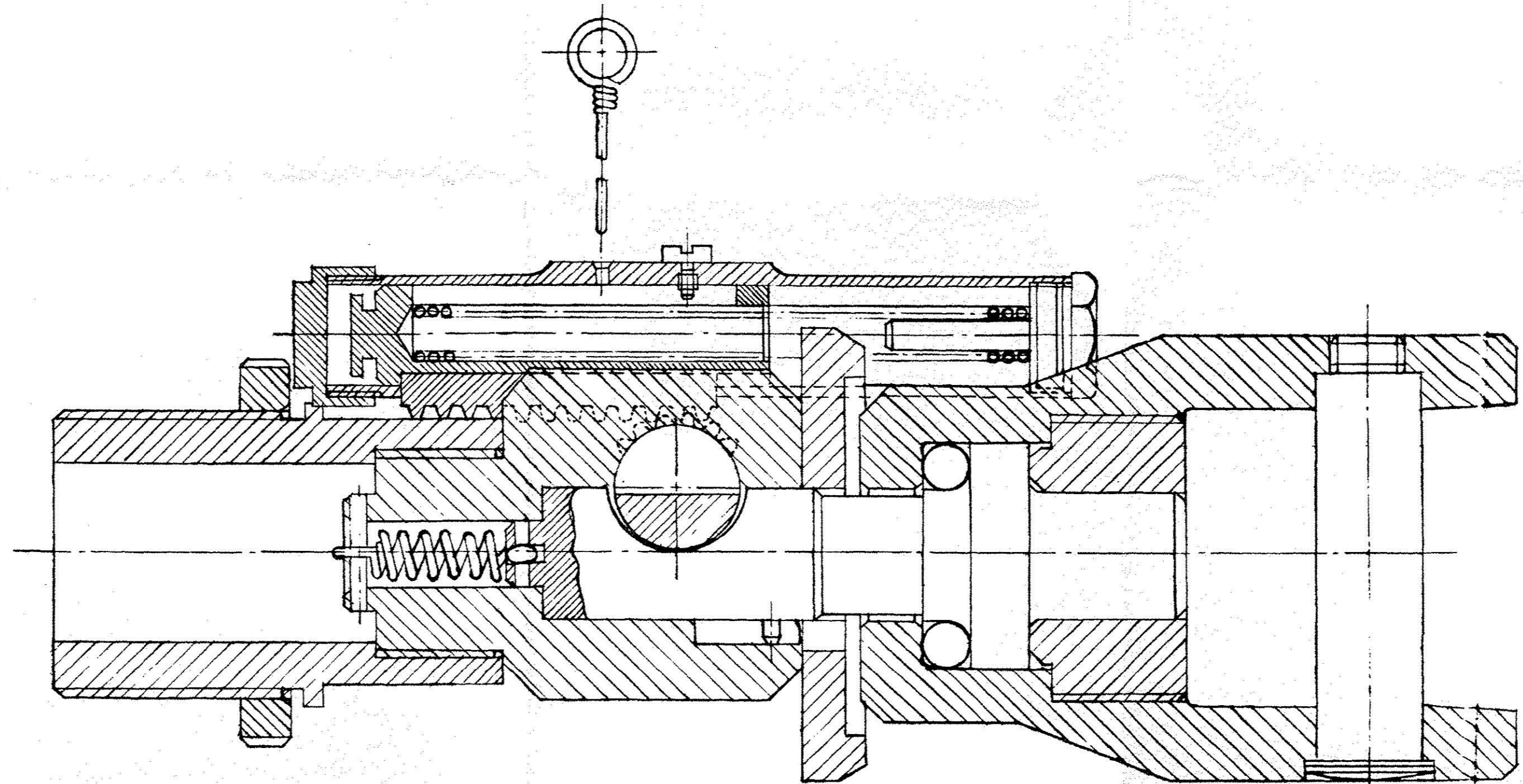
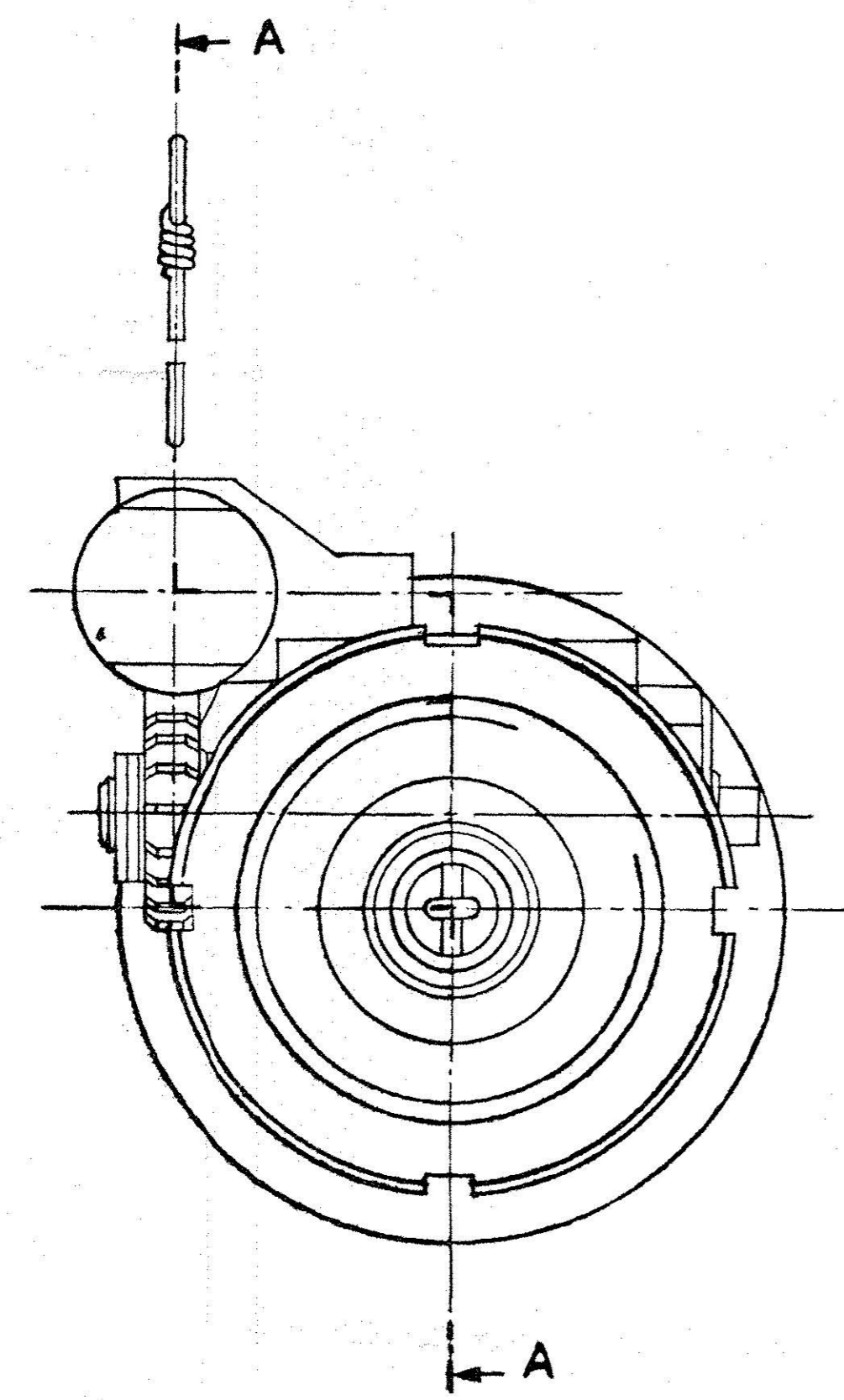
DRG. CONVENTIONS CONFORM TO IS : 696.
 DIMN. ARE IN MM.
 GEN. TOL.

DRG. No. ARDE 1947
 DET. 1

| LIST OF COMPONENTS | | | | | |
|--------------------|---------------------|----------|-------|-----------|----------|
| ITEM NO. | NOMENCLATURE | NO. REQ. | MATL. | DRG. NO. | PRT. No. |
| 1 | BLOCK HOUSING ASSY. | 1 | - | ARDE 1947 | 2 |
| 2 | PIN ARMING | 1 | - | " " | 27 |
| 3 | CLEVIS UNIT ASSY. | 1 | - | " " | 28 |
| 4 | LOCK NUT | 1 | - | " " | 28 |



(UNLOCKED POSITION)



LOCKED POSITION

SECTION A-A

Issue to the Gm,
 O.F., Dam Dam
 Inspected by: [Signature] Date: 06/09/18
 Signature: [Signature]
 Name: Foreman
 Title: [Blank]
 Date: [Blank]
 Director: [Blank]

| | | | | |
|-------------|-------------|-------------|-----------------------|----------------------|
| DRN. L.V.P. | CHD. R.R.P. | TCD. D.D.T. | COMP. Bd/- | ASSY. DRG. ARDE 1947 |
| CD | PASSED | SCALE | 1:1 | DESIGN AUTHORITY |
| 2 | 7-4-2000 | - | DRG. RE-TRACED | ARDE PUNE-21 |
| 1 | 29-7-63 | - | TRACED WITHOUT CHANGE | EST. WEIGHT |
| R. No. | DATE | AUTHORITY | BRIEF RECD | MATL. GAUGE SCHD. |
| | | | ZONE | DATE |
| | | | CD | MATL. GO |
| | | | W/C | PROTECTIVE FINISH |
| | | | CRE (AA) | |

HOUSING BLOCK AND CLEVIS UNIT ASSY.
 (ANCHORING MECHANISM)

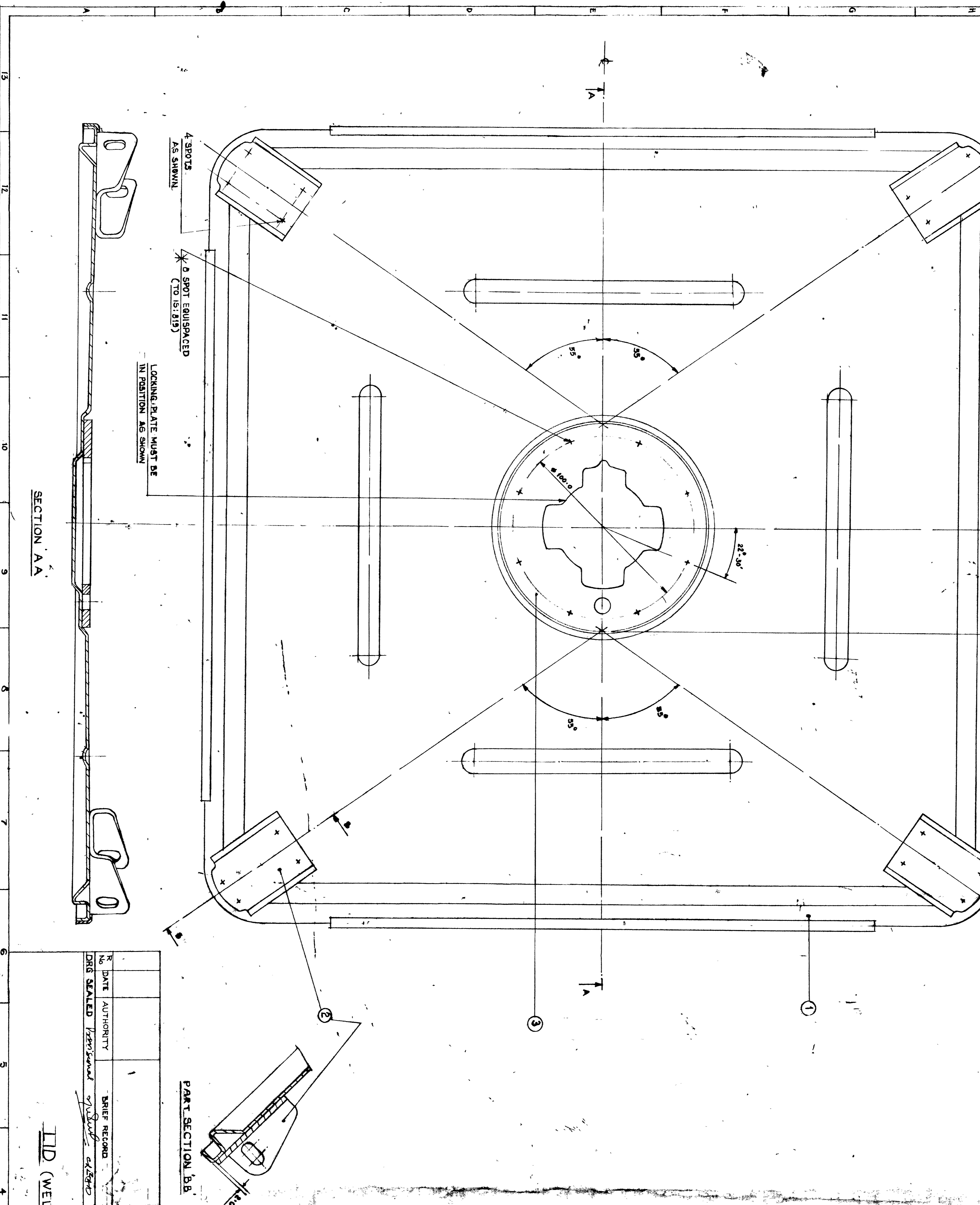
DRG. No. ARDE 1947
 DET. 1 SHTS. SHT.
 PART No.
 D. S. CAT No.
 AHSP

DRG No. **ARDE 2039**
 DRG CONVENTIONS CONFORM TO IS: 696
 DIMENSIONS TO BE GIVEN TO THE NEAREST CLASS TO IS: 2025

| ITEM No. | NOMENCLATURE | MATL | DRG No. | DET. PART No. |
|----------|---------------|------|-----------|---------------|
| 1 | LID | 1 | ARDE 2039 | 3 |
| 2 | BRACKET | 4 | ARDE 2039 | 5 |
| 3 | LOCKING PLATE | 1 | AS | |

PROTECTIVE TREATMENT
 THE COMPONENTS OF THE SUB ASSY SHALL BE GIVEN THE FOLLOWING PROTECTIVE TREATMENT:
 A) PHOSPHATED TO SPEC IS: 3618 CLASS A-1

NOTE
 ALL WELDING JOINTS SHOULD BE AS PER TO SPEC IS: 815



PART SECTION B.B

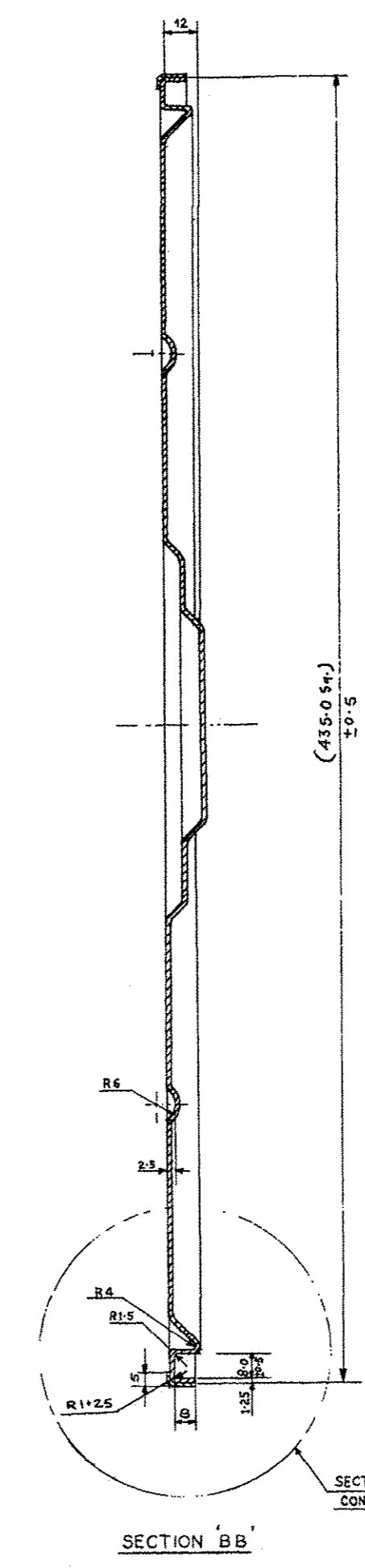
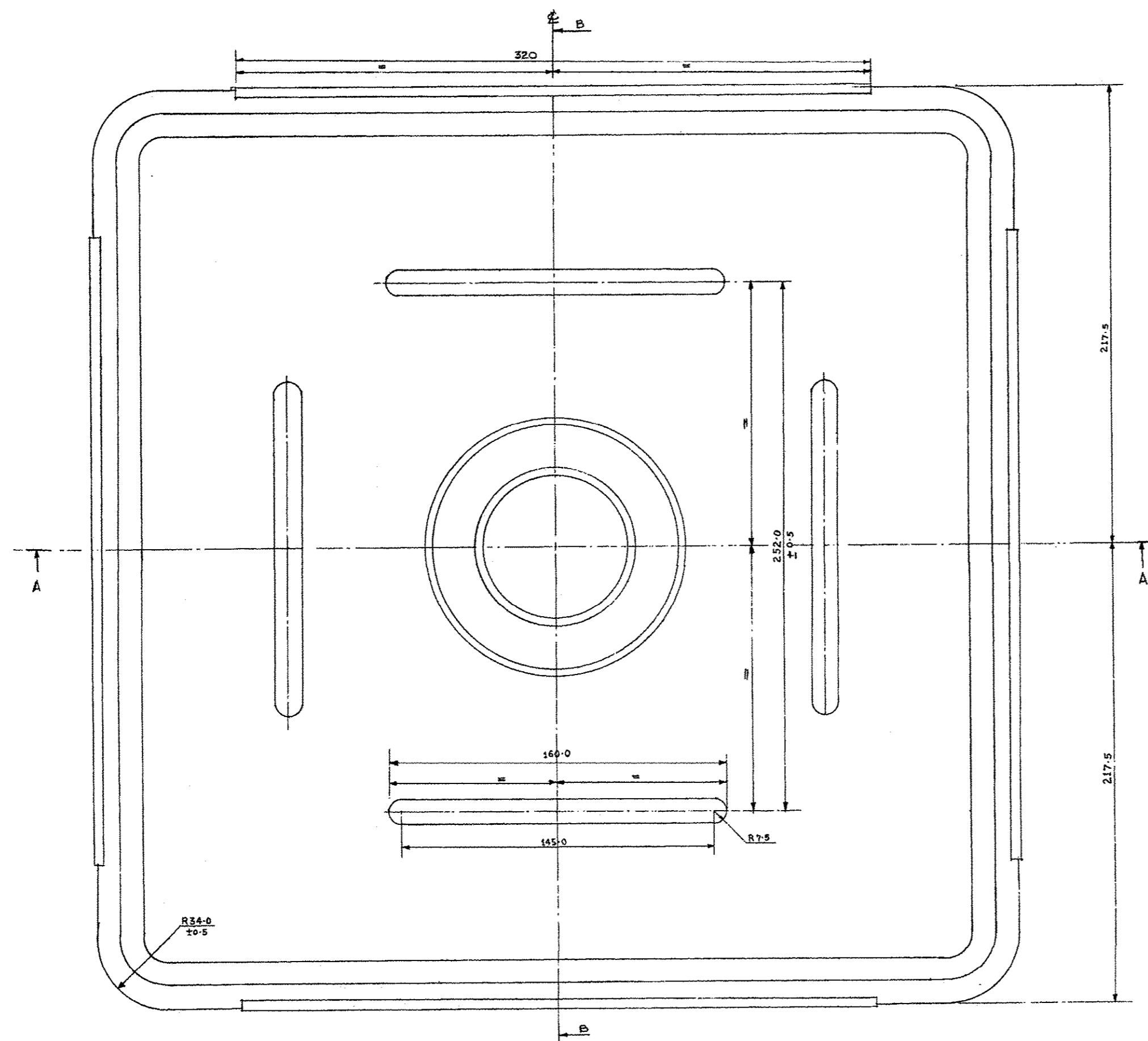
SECTION A.A

| | | | | | |
|-------------------|--------------|-------------------|----------|------|---------|
| DRG No. | ARDE 2039 | DET No. | 2 | SMTS | SMT No. |
| DESIGN AUTHORITY | ARDE PUNE-21 | DESIGN AUTHORITY | | | |
| DATE | 15-7-66 | DATE | 15-7-66 | | |
| APPROVED | | APPROVED | | | |
| SCALE | 1:1 | SCALE | 1:1 | | |
| EST WEIGHT | | EST WEIGHT | | | |
| GAUGE SCD | | GAUGE SCD | | | |
| MATL | | MATL | | | |
| PROTECTIVE FINISH | AS ABOVE | PROTECTIVE FINISH | AS ABOVE | | |
| DRG SEAL | 3 | DRG SEAL | 3 | | |
| DRG No. | ARDE 2039 | DET No. | 2 | SMTS | SMT No. |
| DESIGN AUTHORITY | ARDE PUNE-21 | DESIGN AUTHORITY | | | |
| DATE | 15-7-66 | DATE | 15-7-66 | | |
| APPROVED | | APPROVED | | | |
| SCALE | 1:1 | SCALE | 1:1 | | |
| EST WEIGHT | | EST WEIGHT | | | |
| GAUGE SCD | | GAUGE SCD | | | |
| MATL | | MATL | | | |
| PROTECTIVE FINISH | AS ABOVE | PROTECTIVE FINISH | AS ABOVE | | |

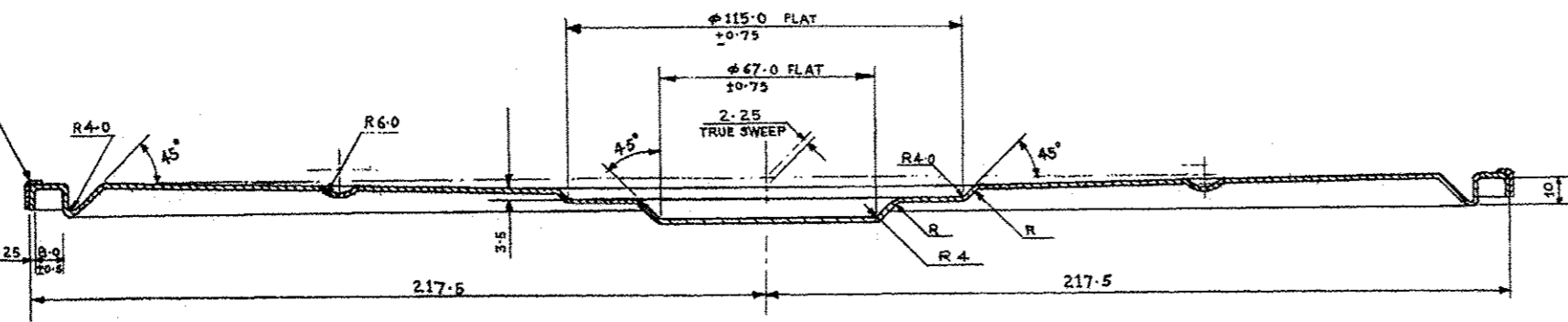
LID (WELDING ASSY)

NOTE
 ALL SHARP EDGES AND BURRS ARE TO BE REMOVED
MATERIAL
 MILD STEEL 1.25 mm THICK SPEC: STEEL TO IS:513:2008 DESIGNATION CR 2

PROTECTIVE TREATMENT
 PHOSPHATED TO SPEC: IS: 3618 CLASS A1



8 X 5 X 320 X 1.25 THICK STRENGTHENING ANGLE (No. OFF 4)
 TO BE SPOT WELDED TO IS: 819
 EXCEPT 1) SPOT DIA 5mm
 2) EDGE DISTANCE TO BE MAX.
 OBTAINABLE BY POSITIONING SPOTS
 CENTRALLY IN RELATION TO ANGLE WIDTH
 3) PITCH TO BE SUCH AS TO GET 9 EQUISPACED
 SPOTS PER ANGLE

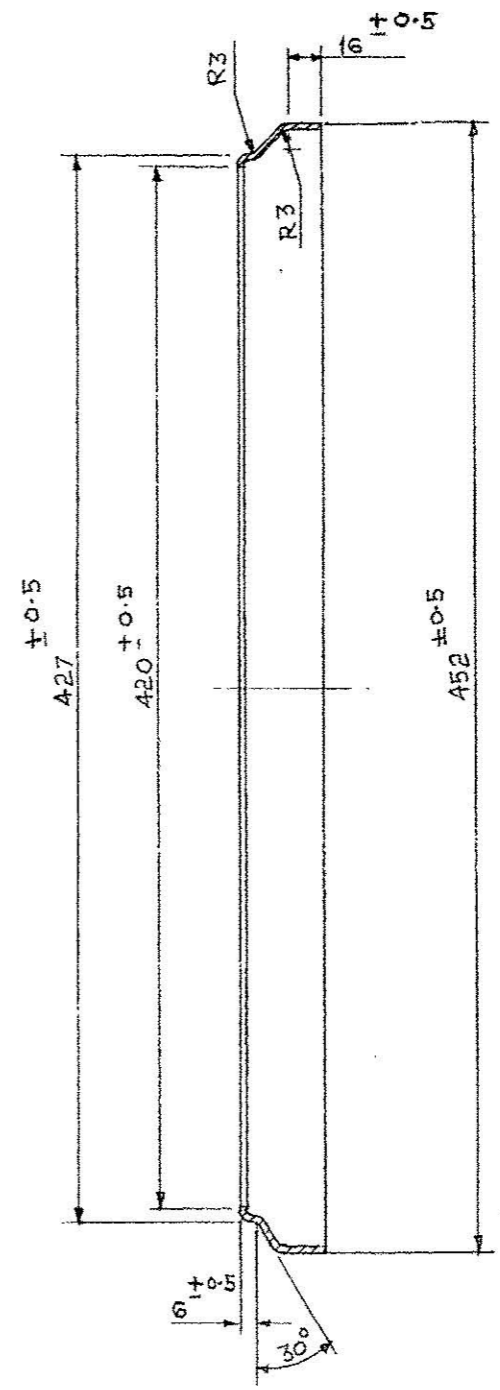
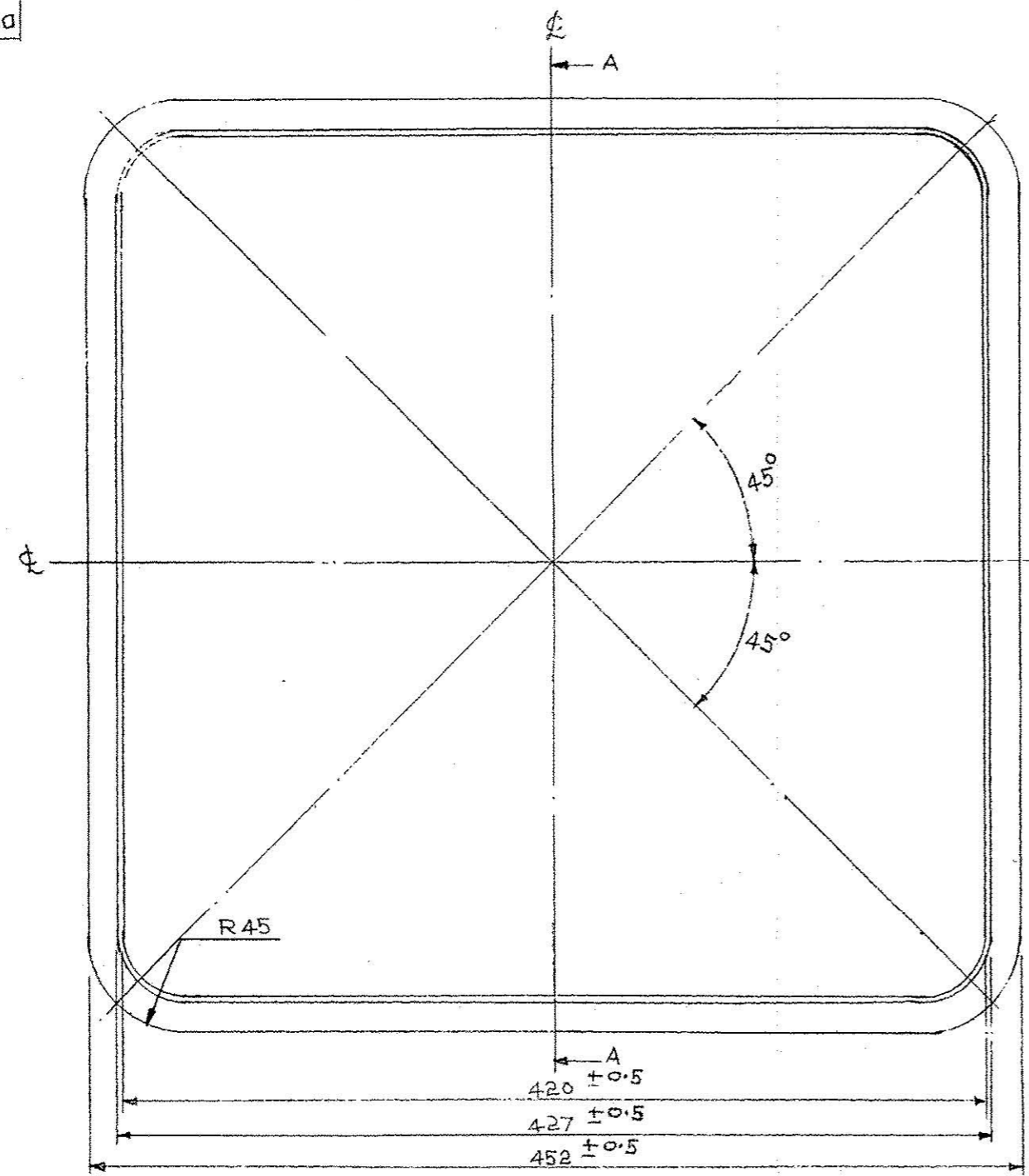


SECTION 'AA'
 SWEEP APPLIES ON ALL LONGITUDINAL SECTIONS

| | | | | | |
|--|----------|-------------|--------------|------------------------------|--------------------------|
| DRN. B.V.T | CHD | SCALE | 1:1 | COMP. BY | ASSY DRG ARDE 2039 SHY 4 |
| CD | PASSED | SCALE | 1:1 | DESIGN AUTHORITY | ARDE PUNE - 21 |
| 1 | 31.10.17 | 15.07.17 | 15.07.17 | DATE | 15-7-17 |
| R | DATE | AUTHORITY | BRIEF RECORD | ZONE | CD |
| DRG | SEALED | PROVISIONAL | APPROVED | DATE | 15-7-17 |
| MATERIAL - AS ABOVE | | | | PROTECTIVE FINISH - AS ABOVE | |
| DRG No ARDE 2039 DET No 3 SHY No 4 PART No DS CAT No A/HSP | | | | | |

LID

DRG No. ARDE 2039
 PART 4 SHTS 5HTS
 DRG CONVENTIONS CONFORM TO IS: 696
 DIMNS ARE IN mm
 GEN TOL-MEDIUM CLASS TO IS-2102



NOTE:—
 ALL SHARP EDGES AND BURRS
 ARE TO BE REMOVED

MATL:—
 MILD STEEL 1.25mm THICK SPEC.
 STEEL TO IS:513:2008 DESIGNATION CR 2

PROTECTIVE FINISH:—
 PHOSPHATED TO SPEC IS:3618
 CLASS-A1

SECTION A-A

2 issue to the GM, D.F., Dum Dum

उत्पादन तथा निरीक्षण विभाग के प्रमुख प्रमाणित
 Certified Suitable to quick Manufacture
 Inspected
 दिनांक: 06/09/18
 हस्ताक्षर: [Signature]
 पद: [Title]
 Director General of Aeronautical Quality Assurance

| R No | DATE | AUTHORITY | BRIEF RECORD | ZONE | CD | GO | SIGN |
|------|----------|------------------------|---------------------------------|-------|----|-------|------|
| 2 | 31.10.17 | RCMA(AA)1434/3/11.9.17 | DRG.AMENDED VIDE AL. NO.21/2017 | MATL. | mm | 0.5mm | |
| 1 | 9-5-03 | | AMENDED VIDE AL No 12/2003 | C-7 | | | |

DRG SEALED [Signature]

| DRN DSS | CHD P. | TRD RMN | COMP | ASSY DRG |
|---------|--------|------------------------------|--------------|--------------|
| CD | PASSED | SCALE 1:2 | EST WEIGHT. | ARDE PUNE-21 |
| | | Gauge SCHD | DATE 15-7-86 | |
| | | MATL - AS ABOVE | | |
| | | PROTECTIVE FINISH - AS ABOVE | | |

LID SEATING

| | |
|-----------|-------------|
| DRG No. | ARDE 2039 |
| DET No 4 | SHTS SHT No |
| PART No | |
| D5 CAT No | |
| AHSP | |