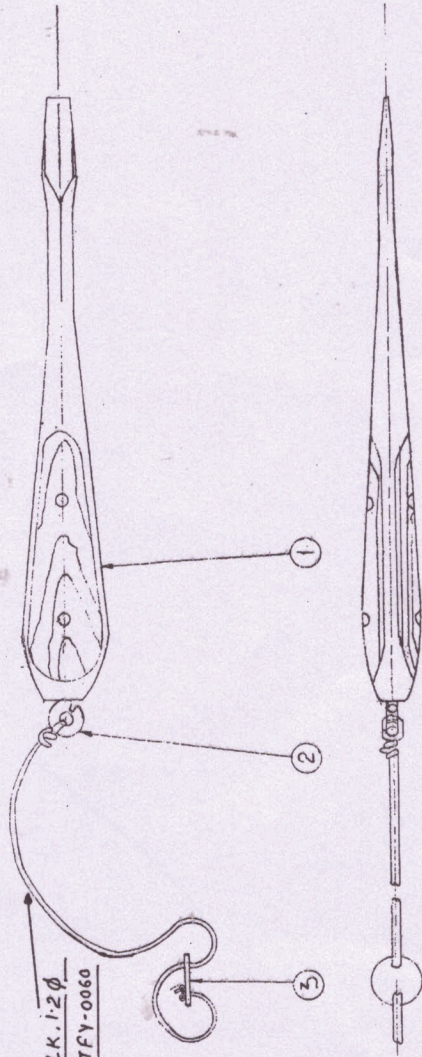


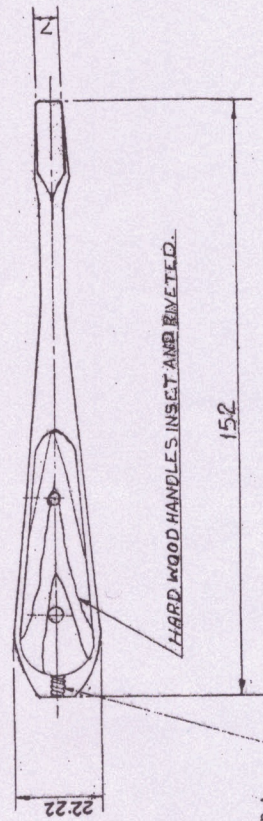
DIMENSIONS ARE IN MM.



CORD. BLACK SILK. 1.2 ϕ
1525 mm LONG. T.F.Y-0060

ARRANGEMENT.

①



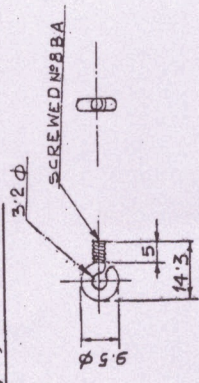
SCREW DRIVER
1 TO A SET

TAPPED NO 8 B.A.
54 DEEP.

DIMENSIONS SHOWN ARE APPROXIMATE

MATL:- STEEL 50 Cx1V23 OF IS: 1570 - 1961
S&P NOT MORE THAN 0.05% AND WOOD SISSOO HANDLE

EYE, SCREWED.

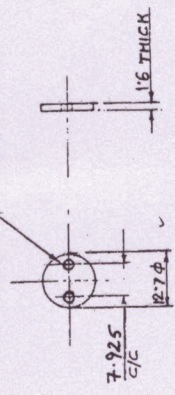


MATL:- CARBON STEEL OF IS: 7283 - 1974.
C-20 OF IS: 1570 - 1981

1 TO A SET

③

DISC. ADJUSTING 2-HOLES 1.6 ϕ
PLUMB LINE
EDGES TO BE RADIOUS



MATL:- BRASS Gd-1 HB OF IS: 319 - 1989

1 TO A SET

DFD/DO/002

DR. <i>[Signature]</i> TR. <i>[Signature]</i> CH. <i>[Signature]</i> APPROVED	DIRETOR FIRE CONTROL No. 7, MK. 5		DF/1.11.77 SCALE
	SCREW DRIVER, No. 7 DIRECTOR FIRE CONTROL, MK. 2		TREAT.
ORANGE FACTORY DEHRA DUN.	DRG No - C.I.A.(F.C)855 (O.S-763A, O.S-13610, O.S-13520, O.S-13521)		MATL.
	AMENDMENTS		SHEETS
		MCT-796/2	DRAWING NO-
		30/14 DT 12-10-78	SHEET NO.

FOR TRADE SEAL
Date of Issue
04/01/21
Rg