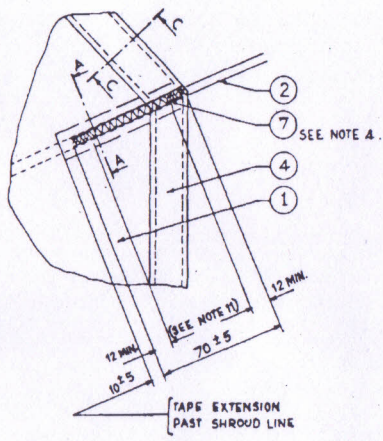
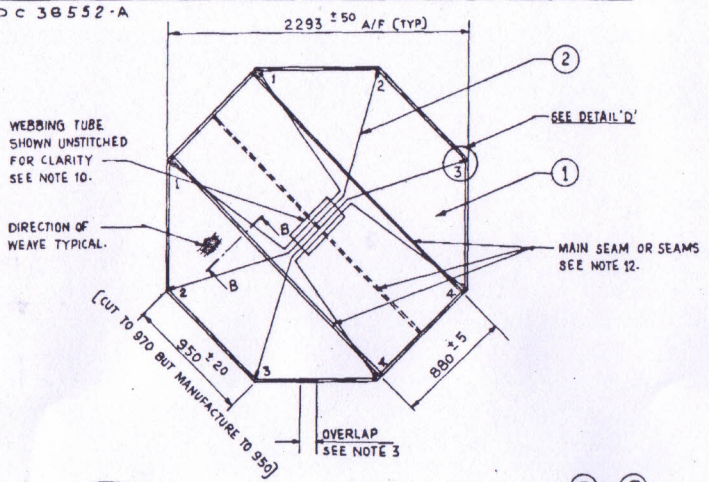
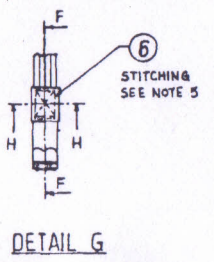
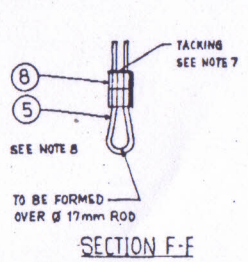
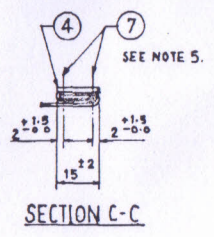
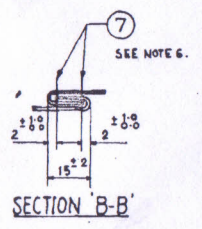
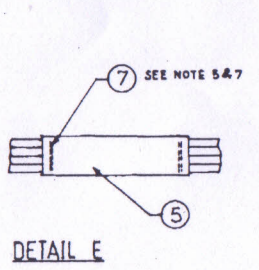
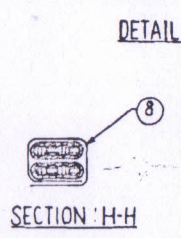
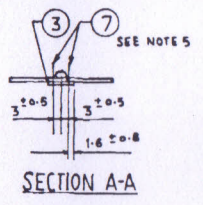
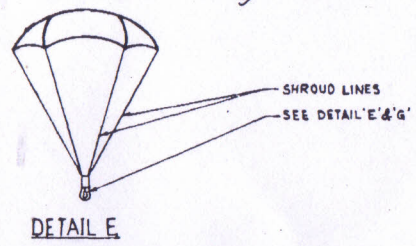


DRG. CONVENTIONS CONFORM TO IS: SPECIFICATIONS.
DIM. ARE IN MM. UNLESS OTHERWISE STATED.

DC 38552-A



- NOTE:-
- ALTERNATIVE MATL. FOR TAPE (ITEM 3): NYLON TAPE TYPE III TO SPEC. MTL-T-5038F. COLOUR NATURAL.
 - ALTERNATIVE MATL. FOR TAPE (ITEM 4) WEBBING, NYLON TYPE 1 TO SPEC. MTL-W-4088H AMDT-2.
 - FINISH END OF TAPE, HEM (ITEM 4) TO OVERLAP BY 193 ± 13 mm. AND END TO BE TURNED UNDER.
 - STITCH TYPE 308, (3 mm WIDE) 8 TO 12 STITCHES PER 25 mm. LENGTH TO SPEC FED-STD-751A.
 - STITCH TYPE 301, 7 TO 11 STITCHES PER 25 mm LENGTH TO SPEC. FED-STD-751A.
 - SEAM TYPE L5C-2, STITCH TYPE 301, 7 TO 11 STITCHES PER 25 mm LENGTH TO SPEC. FED-STD-751A.
 - ALL SHROUD LINES (ITEM 2) TO BE PULLED THROUGH WEBBING TUBE (ITEM 5) AFTER SHROUD LINES HAVE BEEN PROPERLY ADJUSTED IN WEBBING TUBE, STITCH AS SHOWN IN DETAIL 'E' THE LOOP AS SHOWN IN SECTION F-F IS THEN TO BE FORMED, WRAPPED WITH TAPE AS SHOWN IN SECTION H-H & STITCHED AS SHOWN IN DETAIL 'G'.
 - AN APPROVED MATERIAL SUBSTITUTE MAY BE USED FOR CORD, STITCHING, TAPE, WEBBING TUBE & TAPE HEM, (ITEMS 4, 5, 6, 7 & 8).
 - FOR METHOD OF FOLDING PARACHUTE SEE DRAWING No. 2440A03044.
 - ALL SHROUD LINES RUN PARALLEL AND IN SEQUENCE THROUGH WEBBING TUBE.
 - BACK-TACK STITCHING AS INDICATED. STITCHING ON UPPER END OF SHROUD TO COMMENCE BELOW HEAT SEALED END OF SHROUD.
 - PARASHEET MAY BE MANUFACTURED FROM A SINGLE CLOTH ELEMENT OR FROM TWO CLOTH ELEMENTS WITH A SINGLE SEAM SHOWN THUS OR FROM THREE CLOTH ELEMENTS WITH TWO SEAMS SHOWN THUS



ITEM No.	NAME	DESCRIPTION			SIZE	REMARKS
		MATERIAL	SPEC.	INDIGENOUS EQUIVALENT MATERIAL		
1	PARASHEET	CLOTH, NYLON PARACHUTE TYPE I COLOUR: NATURAL OR WHITE	MIL-C-7020G	NYLON FABRIC LIGHT WEIGHT FOR PARACHUTE 37g UD/G TO SPEC, IS 4726:1984, REAFFIRMED 2008.		1, 2 OR 3 PARTS SEWN TOGETHER SEE NOTE 12
2	SHROUD LINE	CORD, NYLON TYPE III COLOUR: NATURAL OR OLIVE DRAB	MIL-C-5040E AMDT-2	CORD, NYLON BRAIDED 2452N FOR PERSONNEL PARACHUTE TO SPEC, JSS 4020-8:2013.	APPROX 5.2m LONG. 4 OFF	ENDS TO BE SEALED
3	TAPE, SHROUD LINE	TAPE, NYLON CLASS C, TYPE II COLOUR: NATURAL	MIL-T-5008G	TAPE TEXTILE, NYLON 14mm (BS 230 Kg) U/D TO SPEC. JSS 8315-6.	APPROX 80 mm LONG. 8 OFF	ENDS TO BE SEALED SEE NOTE 1
4	TAPE, HEM	TAPE, NYLON TYPE V COLOUR: NATURAL	MIL-T-5038F	TAPE TEXTILE, 14mm (BS 230 Kg) U/D TO SPEC. JSS 8315-6.	APPROX 8m CONTINUOUS LENGTH	SEE NOTES 2 & 8
5	WEBBING TUBE	TUBULAR NYLON COLOUR: NATURAL OR CONTRASTING COLOUR	MIL-W-5625H AMDT-1	TAPE TEXTILE, NYLON TUBULAR 26mm U/D (17500N) ADRDE/9SPEC/1985/27.	APPROX. 130mm LONG, 20-25 mm WIDE. 1 OFF	ENDS TO BE SEALED SEE NOTE 8
6	CORD STITCHING	THREAD NYLON NATURAL LUBEX QUALITY 720	SABS 1362:1982	THREAD SEWING NYLON U/D No. H2 TO SPEC. IS: 4229:1992, REAFFIRMED 2013.	25 mm WIDE	SEE NOTE 8
7	CORD STITCHING	THREAD NYLON NATURAL LUBEX QUALITY 720	SABS 1362:1982	THREAD SEWING NYLON U/D No. L2 TO SPEC. IS: 4229:1992, REAFFIRMED 2013.	CORD SIZE No. 5 (METRIC 10)	SEE NOTE 8
8	TAPE	TAPE, SINGLE HERRINGBONE NYLON	BRAITEX 760-320	TAPE, NYLON 26mm MED U/D (BS 800 Kg) TO SPEC ADRDE/BP/1 (D).	CORD SIZE No. E (METRIC 40)	SEE NOTE 8

01-02-2020	DC 37546-A	NEW MASTER COPY & NEGATIVE REPLACED IN SUPERSSESSION OF EXISTING DILAPIDATED COPY.				DRN:-	TRD:- Rawl	CHD:- G2	TRNCHD:- G2	ASSY. ORG. 2440 A 13032
24-04-1999	DC 38552-A	ADDED INDIGENOUS EQUIVALENT MATERIAL FOR ITEM No. 1 TO 8.			B, C, D x 2	APPRO. G.D.M.A.N	SCALE:- NOT TO SCALE	EST MASS:-		
R. No.	DATE	AUTHORITY	REVISION	ZONE	APPRO. D.O. (SG)	MATL:-	PROTECTIVE FINISH:-	DESIGNER'S REF. 2440A03041		
DRG. SEALED :- 24-04-1999 (PROV)										

PARACHUTE

AHSP:- CQA(A) KIRKEE