

ITEM NO	NOMENCLATURE	DRG NO.	QTY	MATERIAL	SHEET SIZE
	BODY ASSY	OLF/R&D/RDS/001.01			A3
COMPONENTS					
1	BODY	OLF/R&D/RDS/001.01.01	1	AL ALLOY IS 733 :83, GR.24345	A3
2	HOLDER	OLF/R&D/RDS/001.01.02	1	AL ALLOY IS 733 :83, GR.24345	A3
3	THREADED RING (TEFLON)	OLF/R&D/RDS/001.01.03	1	TEFLON	A4
4	COMPRESSION SPRING (CONED END)	OLF/R&D/RDS/001.01.04	1	X07Cr18Ni9 IS 4454(Pt4):2001	A4
5	THREADED RING	OLF/R&D/RDS/001.01.05	1	AL ALLOY IS 733 :83, GR.24345	A4
6	SPRING (STRIP)	OLF/R&D/RDS/001.01.06	1	SHEET ST. STEEL IS 6603:01 Gr. X20 Cr 13	A4
7	SCREW	OLF/R&D/RDS/001.01.07	1	BRASS IS 319 :89 TYPE-1	A4
8	WINDOW HOLDER	OLF/R&D/RDS/001.01.08	1	AL ALLOY IS 733 :83, GR.24345	A4
9	O'RING	OLF/R&D/RDS/001.01.09	1	SYNTHETIC RUBBER NITRILE BLACK BA-3 RHD 51-60- TO BS 2751-56	A4
10	WINDOW	OLF/R&D/RDS/001.01.10	1	GLASS BK-7 GOST 3514 :76	A4
11	LENS-I	OLF/R&D/RDS/001.01.11	1	GLASS SF-4	A4
12	LENS-II	OLF/R&D/RDS/001.01.12	1	GLASS BK-7	A4
13	O'RING	OLF/R &D/RDS/001.01.13	1	SYNTHETIC RUBBER NITRILE BLACK BA-3RHD 51-60- TO BS 2751-56	A4
14	GRUB SCREW (CONICAL) M3 X3	STD	1	IS:2388-78, 6.6 ZINC PLATED	-
15	CAP	OLF/R&D/RDS/001.01.014	1	AL. ALLOY. IS: 733-83	A4
16	O'RING	OLF/R&D/RDS/001.01.016	1	SYNTHETIC RUBBER NITRIL BLACK BA3	A4

UN CONTROLLED COPY
CERTIFIED CORRECT COPY OF APPROVED
DRAWINGS AT THIS DATE. 26/11/2017

270918

व्यापार हेतु
FOR TRADE ONLY

COMPT. No. 81 ASSY. DRG.
DESIGN & DRAWING OFFICE
ORDNANCE FACTORY, TILAK CHIRAPPALI - 620 011
RED DOT SIGHT

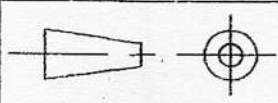
OPTO ELECTRONICS FACTORY
DEHRADUN

2007	GEN. TOL. IS 2102-m (Pt.-1)	TITLE
DRAWN	AG	16/4
CHECKED	[Signature]	16.4
HOS	[Signature]	16.4.
	NAME	DATE
	AWM/ R&D	M/Yr.
	[Signature]	4/07

BODY ASSY.		30P 4100
REF.		M
DRG.No. OLF/R&D/RDS/001.01		

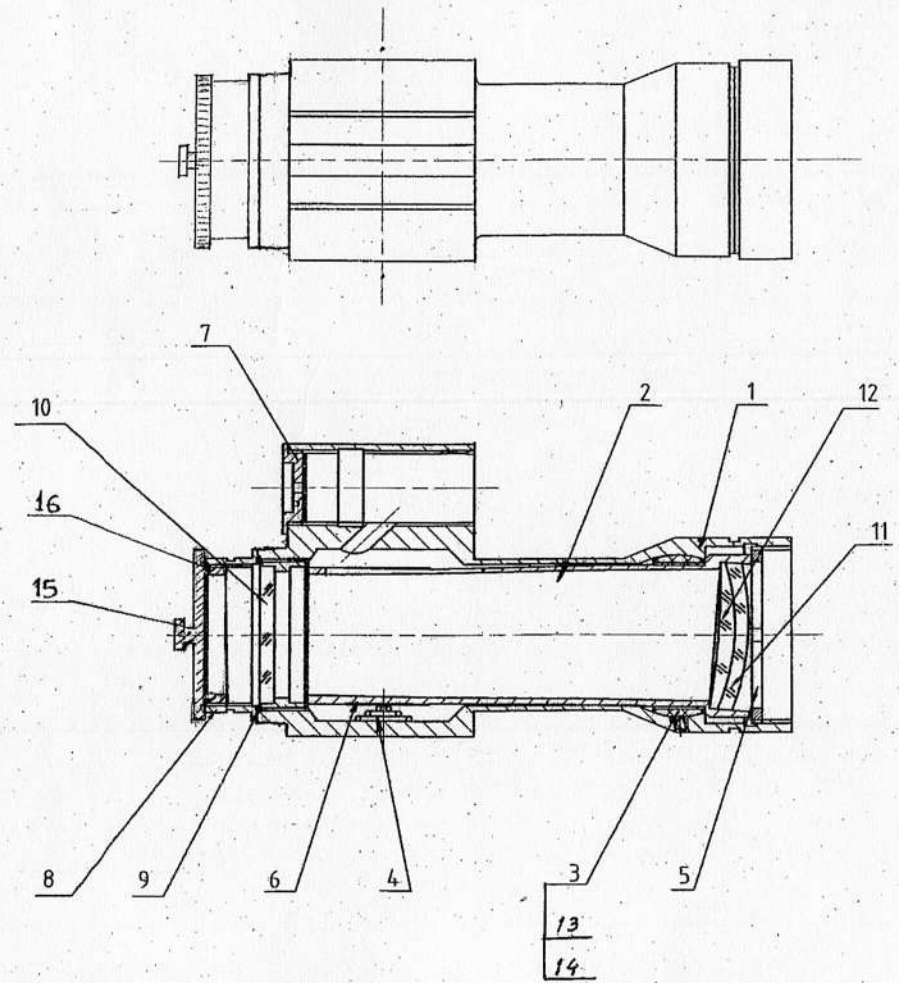
D.A.No.	DT./SIGN	DESCRIPTION
AMENDMENTS		

APPROVED



SCALE:	1:1
SHTS.	16
SHT. No.	01

MATERIAL:	TREATMENT HARDNESS:
SURFACE FINISH:	PROTECTIVE FINISH:



UN CONTROLLED COPY
 CERTIFIED CORRECT COPY OF APPROVED
 DRAWINGS AT THIS DATE. 26/4/22
S. Venkatesh
 DESIGN & DRAWING OFFICE,
 ADVANCE FACTORY, TIRUCHIRAPPALI - 620 016.

270918

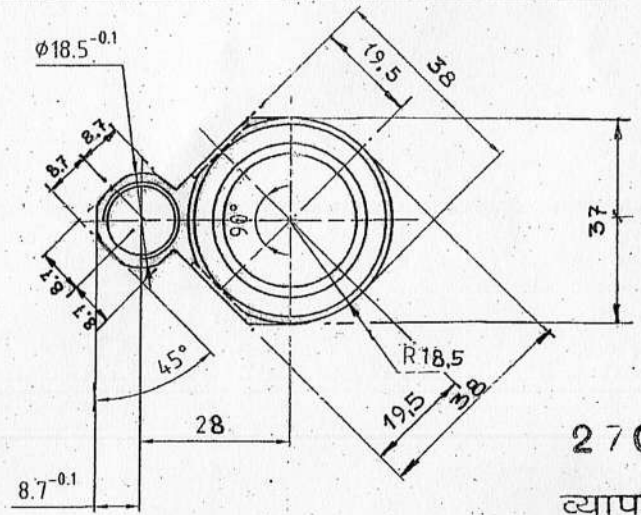
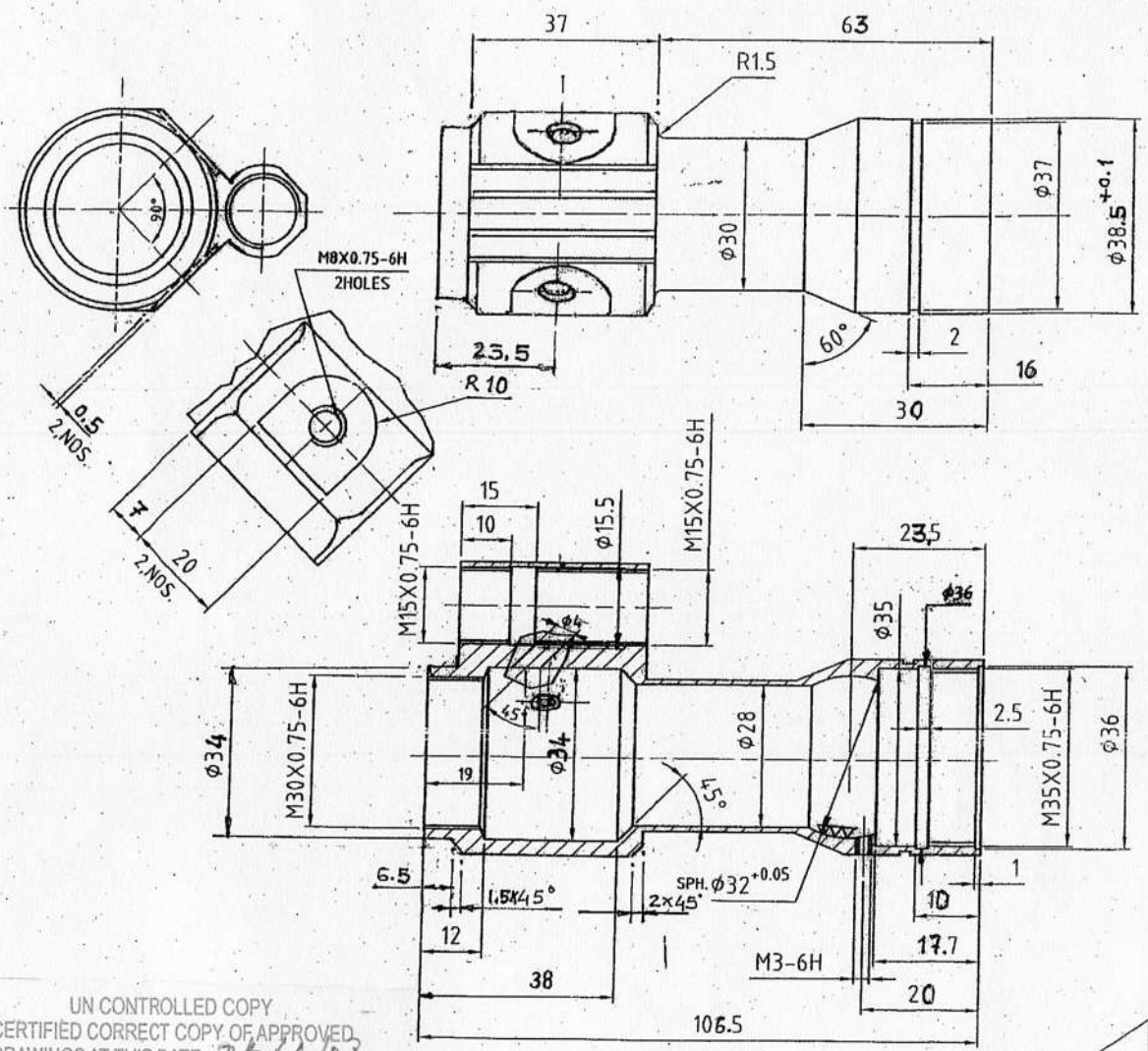
व्यापार हेतु
 FOR TRADE ONLY

NOTE:- PART No. 1 BODY TO BE LAPPED WITH PART
 No. 3 THREADED RING (TEFLON) TO ENSURE SMOOTH MOVEMENT.

ITEM	DESCRIPTION	No. OFF	MATERIAL	REMARKS
LIST OF PARTS				
COMPT. No.	ASSY. DRG.	OPTO ELECTRONICS FACTORY DEHRADUN		
	RED DOT SIGHT.			
2007	GEN TOL IS 2102-m (P1-1)	TITLE BODY ASSY		
DRAWN	<i>AV</i>	18/4	REF. M 1	
CHECKED	<i>S. Venkatesh</i>	16.4.	DRG.No. OLF/R&D/RDS/001-01	
JWM	<i>S. Venkatesh</i>	16.4.		
	NAME	DATE		
D.A.No.	DT./SIGN	DESCRIPTION	AWM/ R&D.	M/Yr. 3/22
AMENDMENTS			APPROVED:	<i>S. Venkatesh</i>
			SCALE: 1:1	SHTS 16 SHT. No. 02

30P 4100

MATERIAL: AL.ALLOY IS 733 - 83-GR 24345(WP)	TREATMENT HARDNESS: T6
SURFACE FINISH: ▽ ▽ ▽	PROTECTIVE FINISH: ANODIC OXIDATION BLACK



270918
 व्यापार हेतु
 FOR TRADE ONLY

NOTE:- SHOULD BE BLACK POWDER COATING/Paint ON OUTER SURFACE OF THE BODY EXCEPT HOLES & THREAD

30P 4100

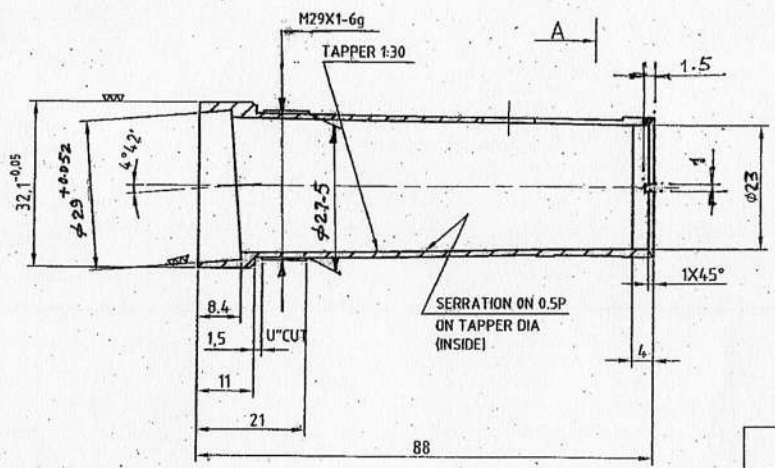
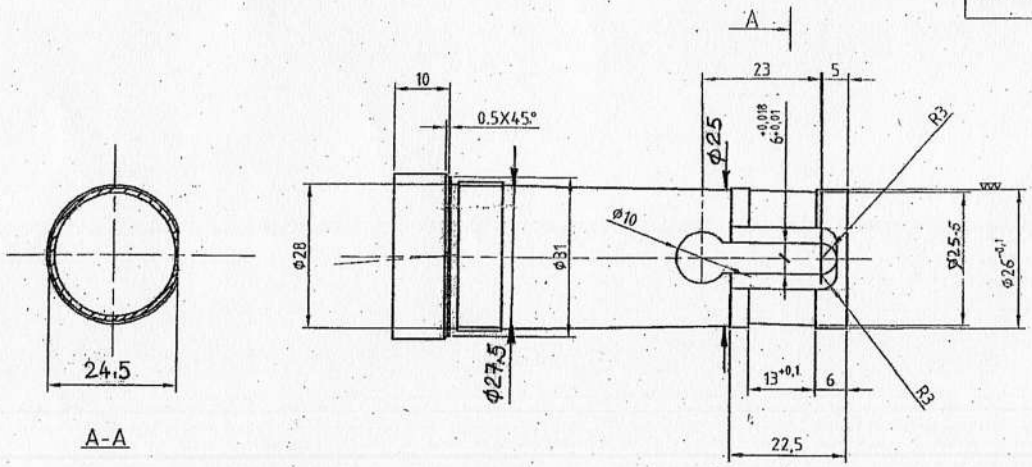
ITEM	DESCRIPTION	No. OFF	MATERIAL	REMARKS
LIST OF PARTS				
COMPT. No.	ASSY. DRG.	OPTO ELECTRONICS FACTORY DEHRADUN		
	RED DOT SIGHT	TITLE		
		BODY		
2007	GEN. TOL. IS 2102-m (P1-1)	REF. M2		
DRAWN	A.P.	16-4		
CHECKED	U.P.	16-4		
HOS.	U.P.	16-4		
NAME		DATE	DRG.No. OLF/R&D/RDS/001.01.01	
AWM/R&D		M/Yr.	SCALE: 1:1	
APPROVED		4/07	SHTS. 16	SHT. No. 03

D.A.No.	DT./SIGN	DESCRIPTION
AMENDMENTS		

UN CONTROLLED COPY
 CERTIFIED CORRECT COPY OF APPROVED DRAWINGS AT THIS DATE: 22/01/22
 DESIGN & DRAWING OFFICE, 22/01/22

OLD NO.037001

MATERIAL: AL. ALLOY IS 733 GR 24345I WP	TREATMENT HARDNESS: 76
SURFACE FINISH: $\nabla \nabla (\nabla \nabla)$	PROTECTIVE FINISH: ANODIC OXIDATION BLACK



UN CONTROLLED COPY
 CERTIFIED CORRECT COPY OF APPROVED
 DRAWINGS AT THIS DATE 24/6/22
 DESIGN & DRAWING OFFICE,
 PERFORMANCE FACTORY, TIRUCHIRAPPALI - 620 016.

270918

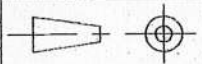
व्यापार हेतु
 FOR TRADE ONLY

30P 4100

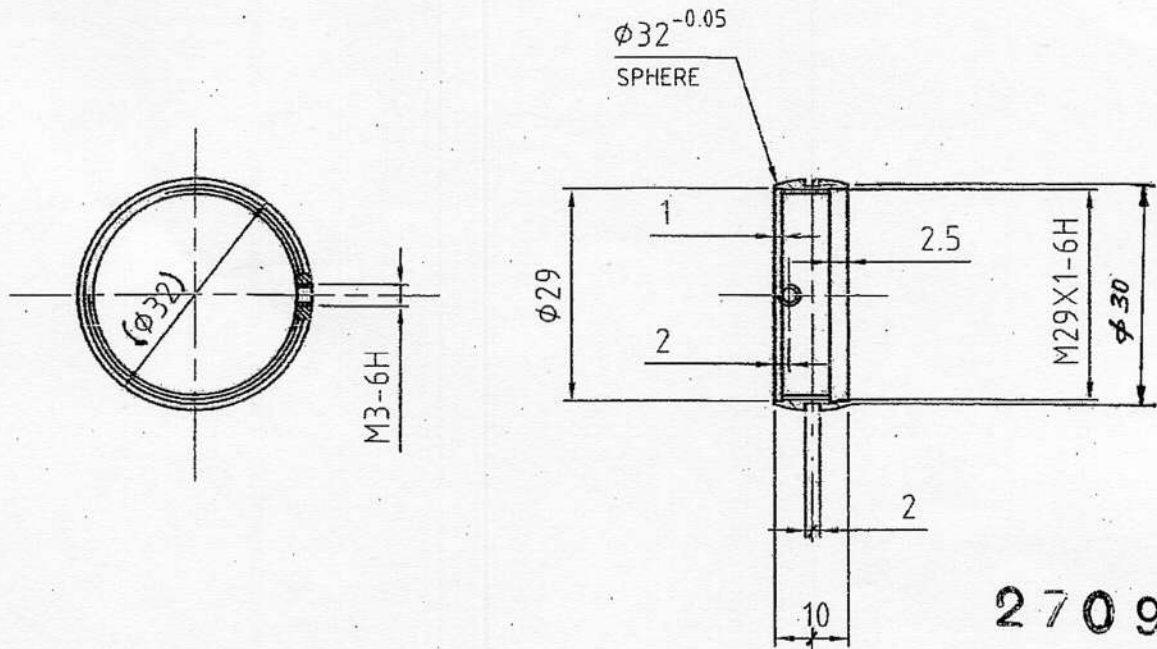
OLD NO.031001

ITEM	DESCRIPTION	No. OFF	MATERIAL	REMARKS
LIST OF PARTS				
COMPT. No.	ASSY. DRG. RED DOT SIGHT	OPTO ELECTRONICS FACTORY DEHRADUN		
2007	GEN. TOL. IS 2102-m (P1.-1)	TITLE HOLDER		
DRAWN	AH	16-4	REF. M2	
CHECKED	AD	16-4	DRG.No. OLF/R&D/RDS/001.01.02	
HOS	AD	16-4	NAME DATE	
AWM/R&D		M/Yr. 8-07	SCALE: 1:1	
APPROVED		SHTS. 16		SHT. No. 04

D.A.No.	DT./SIGN	DESCRIPTION
AMENDMENTS		



MATERIAL: - TEFLON	TREATMENT -
SURFACE FINISH: ∇	PROTECTIVE FINISH :-



270918
व्यापार हेतु
FOR TRADE ONLY

ALTERNATE MATERIAL:- FLURO PLASTIC IS; HIFLON-71

UN CONTROLLED COPY
CERTIFIED CORRECT COPY OF APPROVED
DRAWINGS AT THIS DATE: 24/7/15
S. Venkatesh
DESIGN & DRAWING OFFICE,
ORDNANCE FACTORY, TIRUCHIRAPPALI - 620 016.

No.OFF-01

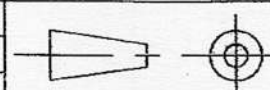
30P 4100

ITEM	DESCRIPTION	No. OFF	MATERIAL	REMARKS
LIST OF PARTS				
COMPT. No.	ASSY. DRG.	OPTO ELECTRONICS FACTORY DEHRADUN		
	RED DOT SIGHT			
2007	GEN. TOL. IS 2102-m (Pt.-1)	TITLE		
DRAWN	<i>Ag</i>	16-4	THREADED RING (TEFLON)	
CHECKED	<i>S. Venkatesh</i>	16-4	REF. M 1	
HOS	<i>S. Venkatesh</i>	16-4	DRG.No. OLF/R&D/RDS/001.01.03	
	NAME	DATE		
	<i>212</i>	M/Yr. 4/07	SCALE: 1:1	
APPROVED			SHTS. 16	SHT. No. 05

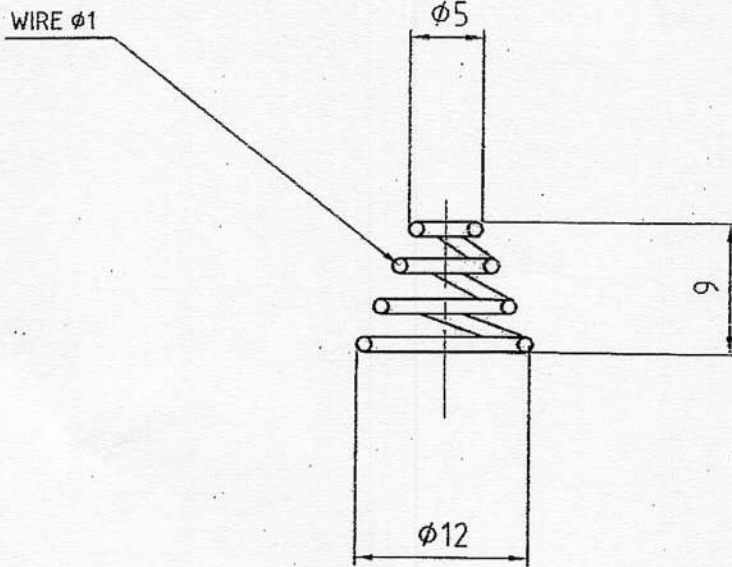
OLD NO. 031002

DO/DA/95/15
24/7/15
ALT. MATERIAL
ADDED.

AMENDMENTS



MATERIAL: - X 07 Cr 18 Ni 9 (Gr 1) IS 4454 (Pt-1):2001	TREATMENT -
SURFACE FINISH:	PROTECTIVE FINISH :-



NO. OF COIL : 4

SPRING'S END : SQUARED

UN CONTROLLED COPY
CERTIFIED CORRECT COPY OF APPROVED
DRAWINGS AT THIS DATE 26/4/22
DESIGN & DRAWING OFFICE,
ORDNANCE FACTORY, TIRUCHIRAPPALI - 620 016.

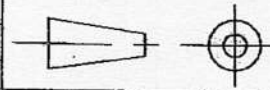
270918
व्यापार हेतु
FOR TRADE ONLY

- (i) ALTERNATE MATERIAL: SPRING STEEL WIRE Gr. SM IS: 4454 (Pt-I) 2001.
- (ii) COATING :- ZINC PLATING.

QTY-1

2007.F00N.011

ITEM	DESCRIPTION	No. OFF	MATERIAL	REMARKS
LIST OF PARTS				
COMPT. No.	ASSY. DRG.	OPTO ELECTRONICS FACTORY DEHRADUN		
2007	GEN. TOL. IS 2102-m (Pt.-1)	TITLE COMPRESSION SPRING (CONED END)		
DRAWN	AS	16.4.	REF. M 1	
CHECKED	[Signature]	16.4.	DRG.No. OLF/R&D/RDS/001.01.04	
HOS	[Signature]	16.4.	SCALE: 5:1	
D.A.No.	DT./SIGN	DESCRIPTION	AWM/ R&D	M/Yr.
AMENDMENTS			APPROVED	4/07
DD/DA/94/15 JEGM/QC 21/7/2015 ALTT. MATERIAL & COATING ADDED			SHTS. 16 SHT.No. 06	

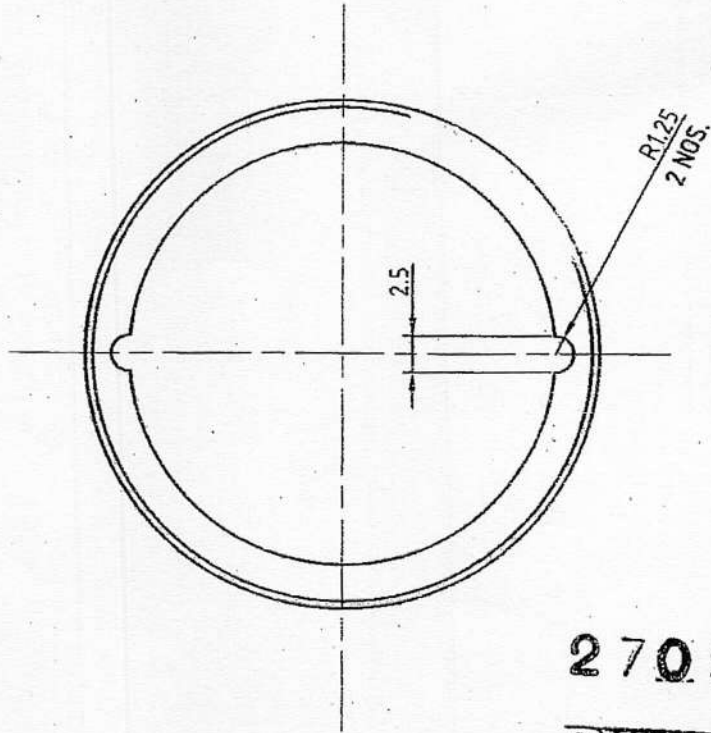
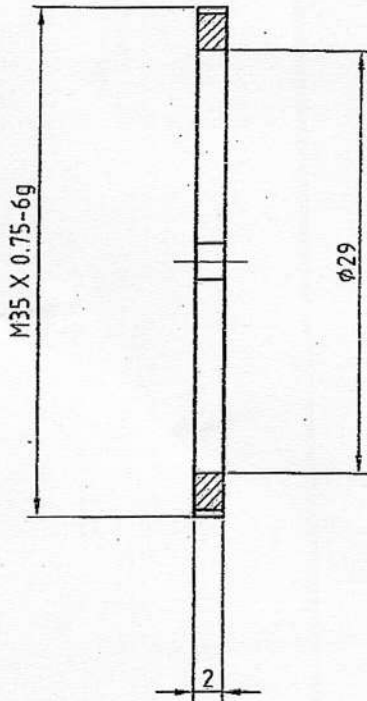


MATERIAL: - AL. ALLOY IS-733 :83 GR 24345(WP)

TREATMENT -

SURFACE FINISH: ∇

PROTECTIVE FINISH :- ANODIC OXIDATION BLACK



270918
व्यापार हेतु
FOR TRADE ONLY

UN CONTROLLED COPY
CERTIFIED CORRECT COPY OF APPROVED
DRAWINGS AT THIS DATE 26/4/22
DESIGN & DRAWING OFFICE, 26/4/22
ORDNANCE FACTORY, TIRUCHIRAPPALI - 620 016.


No.OFF-01

OLD NO.030002

ITEM	DESCRIPTION	No. OFF	MATERIAL	REMARKS
LIST OF PARTS				
COMPT. No.	ASSY. DRG.	OPTO ELECTRONICS FACTORY DEHRADUN		
	RED DOT SIGHT			
2007	GEN. TOL. IS 2102-m (Pt.-1)	TITLE		
DRAWN	<i>Ag</i>	16-4	<u>THREADED RING</u>	
CHECKED	<i>Ag</i>	16-4	REF.	M
HOS	<i>Ag</i>	16-4	DRG.No. OLF/R&D/RDS/001.01.05	
	NAME	DATE		
D.A.No.	DT./SIGN	DESCRIPTION	AWM/ R&D	M/Yr. 4/07
AMENDMENTS			APPROVED	
				SCALE: 2:1
		SHTS. 16	SHT. No. 07	

MATERIAL: - SHEET ST. STEEL IS : 6311-92
Gr. X 07 Cr 18 Ni 9

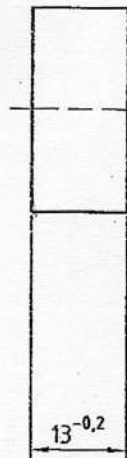
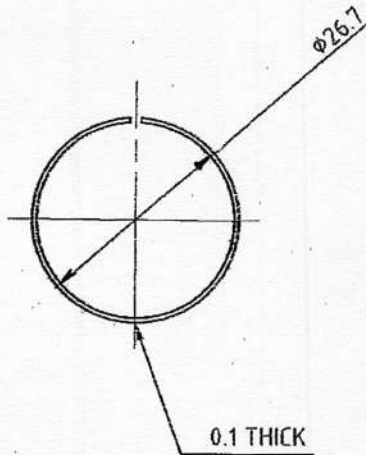
TREATMENT -

SURFACE FINISH: 

PROTECTIVE FINISH :-

UN CONTROLLED COPY
CERTIFIED CORRECT COPY OF APPROVED
DRAWINGS AT THIS DATE 26/4/22

DESIGN & DRAWING OFFICE,
ORDNANCE FACTORY, TIRUCHIRAPPALI - 620 016.



DEVELOPED LENGTH 71 mm.

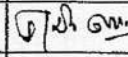
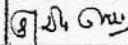
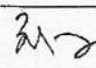
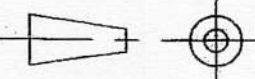
270918

व्यापार हेतु
FOR TRADE ONLY

- ① ALTERNATE MATERIAL :- SPRING STEEL SHEET 0.1mm THICK Gr 80C6, IS: 2507-75
- ① COATING :- CHEMICAL OXIDATION BLACK.

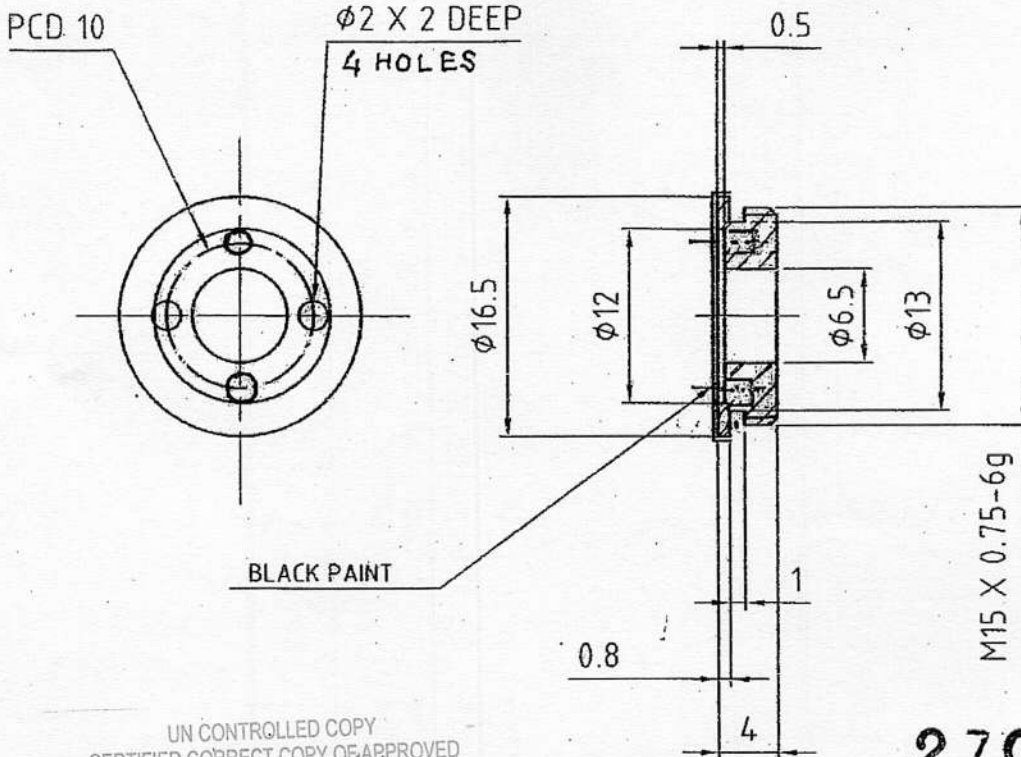
No.OFF-01

OLD NO.031004

ITEM	DESCRIPTION	No. OFF	MATERIAL	REMARKS
LIST OF PARTS				
COMPT. No.	ASSY. DRG.	OPTO ELECTRONICS FACTORY DEHRADUN		
	RED DOT SIGHT			
2007	GEN. TOL. IS 2102-m (Pt.-1)	TITLE		
DRAWN	A4	16-4	<u>SPRING (STRIP)</u>	
CHECKED		16-4	REF. M 1	
HOS		16-4	DRG.No. OLF/R&D/RDS/001.01.06	
D.A.No.	DT./SIGN	DESCRIPTION	AWM/ R&D	M/Yr.
				4/02
AMENDMENTS			APPROVED	
				SCALE: 1:1
		SHTS. 15	SHT. No. 08	

DO/DA/94/15
JEGM/AC
21/7/15
ALTT. MATERIAL R
COATING ADDED.

MATERIAL: - BRASS IS 319 : 89 TYPE-1	TREATMENT -
SURFACE FINISH: ▽	PROTECTIVE FINISH :- CH.OXIDATION; BLACK DULL



UN CONTROLLED COPY
 CERTIFIED CORRECT COPY OF APPROVED
 DRAWINGS AT THIS DATE 26/11/22
 DESIGN & DRAWING OFFICE,
 ORDNANCE FACTORY, TIRUCHIRAPPALI - 620 016.

270918

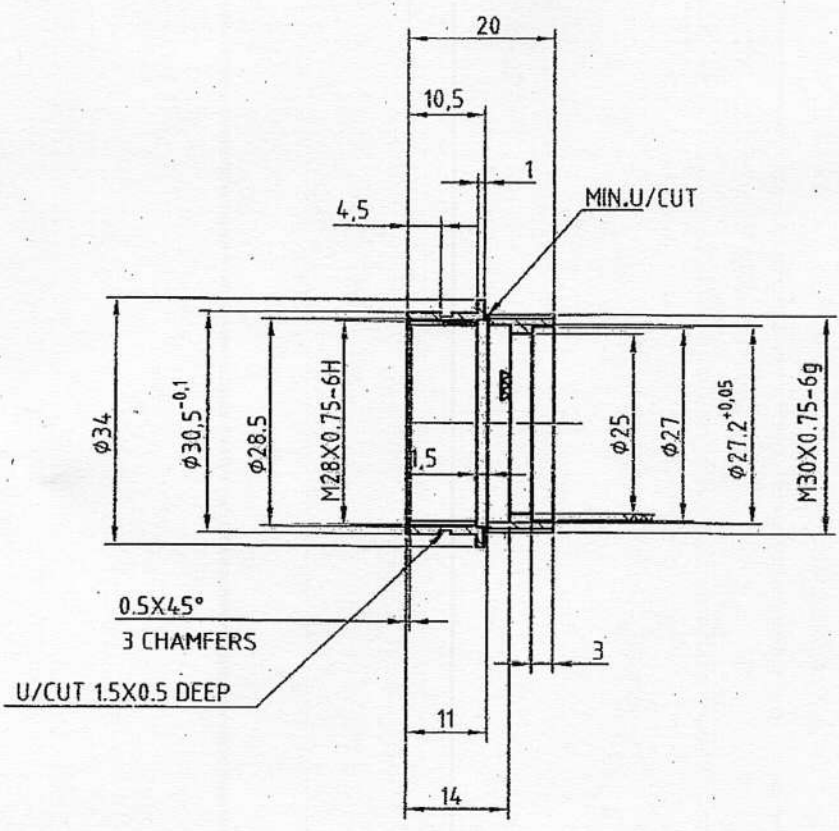
व्यापार हेतु
 FOR TRADE ONLY

QTY-1

800LEON D10

ITEM	DESCRIPTION	No. OFF	MATERIAL	REMARKS
LIST OF PARTS				
COMPT. No.	ASSY. DRG.	OPTO ELECTRONICS FACTORY DEHRADUN		
2007	GEN. TOL. IS 2102-m (Pt.-1)	TITLE <u>SCREW</u>		
DRAWN	16.4	REF. M 1		
CHECKED	16.4			
HQS	16.4	DRG.No. OLF/R&D/RDS/001.01.07		
NAME	DATE			
D.A.No.	DT./SIGN	DESCRIPTION	AWM/R&D	M/Yr.
AMENDMENTS			APPROVED	SCALE: 2:1
			SHTS. 16 SHT. No. 09	

MATERIAL: - AL.ALLOY IS 735 : 83 GR 24345(WP)	TREAT MENT - T6
SURFACE FINISH: ▽ (▽▽)	PROTECTIVE FINISH :- ANODIC OXIDATION BLACK



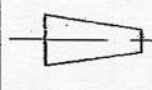
270918
 व्यापार हेतु
 FOR TRADE ONLY

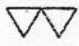
UN CONTROLLED COPY
 CERTIFIED CORRECT COPY OF APPROVED
 DRAWINGS AT THIS DATE 26/4/22
 S. Venkatesh
 DESIGN & DRAWING OFFICE,
 ORDNANCE FACTORY, TIRUCHIRAPPALI - 620 016.

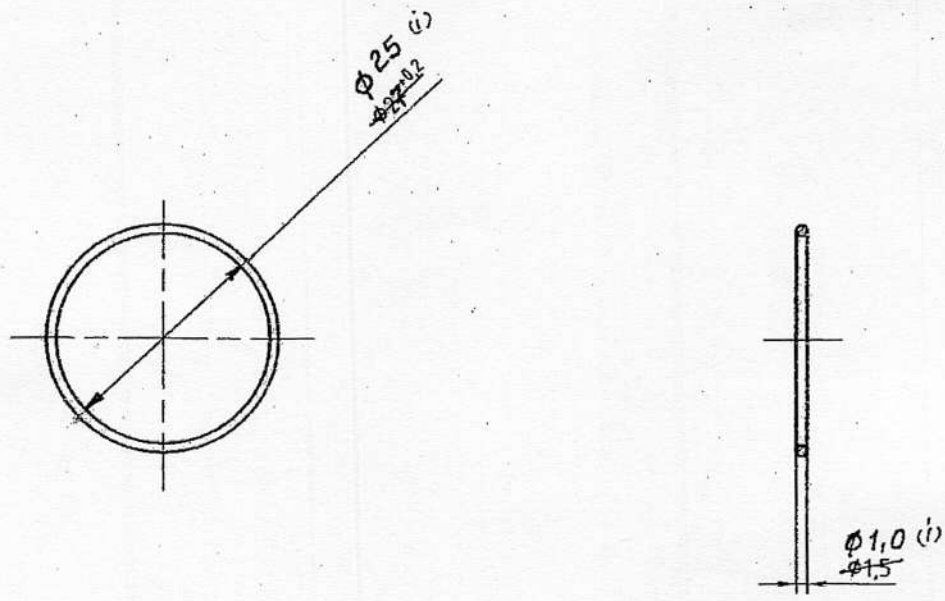
QTY. 01

OLD NO. 032001

		COMPT. No.	ASSY. DRG.	OPTO ELECTRONICS FACTORY DEHRADUN	
		2007	GEN. TOL. IS 2102-m (Pf.-1)	TITLE	
		DRAWN	16/4	WINDOW HOLDER	
		CHECKED	16.4	REF. M1	
		HOS	16.4	DRG.No.OLF/R&D/RDS/001.01.08	
		NAME	DATE	SCALE: 1:1	
D.A.No.	DT./SIGN	DESCRIPTION	AWM/ R&D	M/Yr.	16/4
AMENDMENTS			APPROVED	SHTS. 16 SHT. No. 10	



MATERIAL: - SYNTHETIC RUBBER-NITRILE BLACK BA-3 RHD 51-60 TO BS 275156	TREATMENT - _____
SURFACE FINISH: 	PROTECTIVE FINISH :- _____

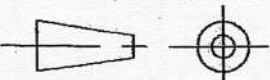


UN CONTROLLED COPY
CERTIFIED CORRECT COPY OF APPROVED
DRAWINGS AT THIS DATE 26/11/22
DESIGN & DRAWING OFFICE,
ORDNANCE FACTORY, TIRUCHIRAPPALI - 620 016.

270918
व्यापार हेतु
FOR TRADE ONLY

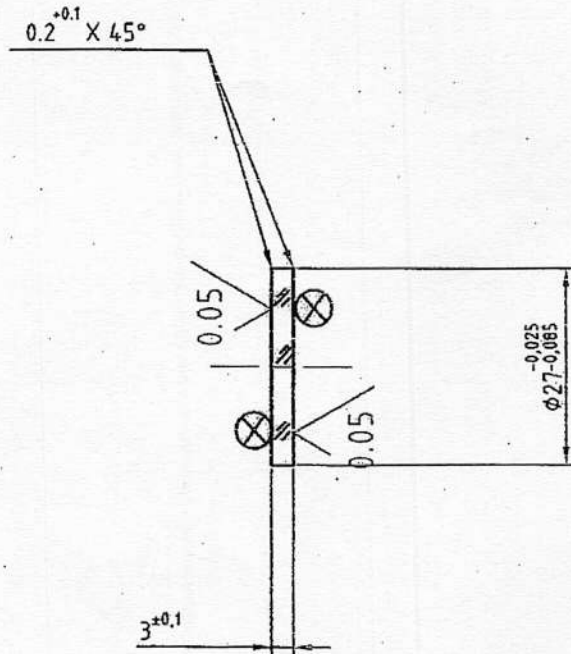
No.OFF-01

E01E031003

ITEM	DESCRIPTION	No. OFF	MATERIAL	REMARKS
LIST OF PARTS				
COMPT. No.	ASSY. DRG.	OPTO ELECTRONICS FACTORY DEHRADUN		
2007	GEN. TOL. IS 2102-m (Pt.-1)	TITLE		
DRAWN	Ag	16-4	<u>ORING</u>	
CHECKED	G/S Om	16-4	REF. M1	
HOS	G/S Om	16-4	DRG.No. OLF/R&D/RDS/001.01.09	
D.A.No.	DT./SIGN	DESCRIPTION	AWM/ R&D	M/Yr.
DA/94/2015	Jt Gm/oc 21/7/2015	DIMN. $\phi 25$ & $\phi 1.0$ WAS $\phi 27^{+0.2}$ & $\phi 1.5$	21/2	4/22
AMENDMENTS			APPROVED	
				
			SCALE: 1:1	SHTS. 16
				SHT. No. 11

MATERIAL: - GLASS BK-7 GOST 3514 :76	TREAT MENT -
SURFACE FINISH: 2.5/ (✓)	PROTECTIVE FINISH :-

N	3
▽ N	0.5
Q	0.02
P	IV
CLEAR APERTURE	φ25.5



UN CONTROLLED COPY
 CERTIFIED CORRECT COPY OF APPROVED
 DRAWINGS AT THIS DATE 26/4/22
 DESIGN & DRAWING OFFICE,
 ORDNANCE FACTORY, TIRUCHIRAPPALI - 620 016.

270918

व्यापार हेतु
 FOR TRADE ONLY

- NOTE :-
1. ALL DIMNS, ARE IN mm
 2. ⊗ ANTI REFLECTION COATING $\lambda 540 \pm 50$ nm

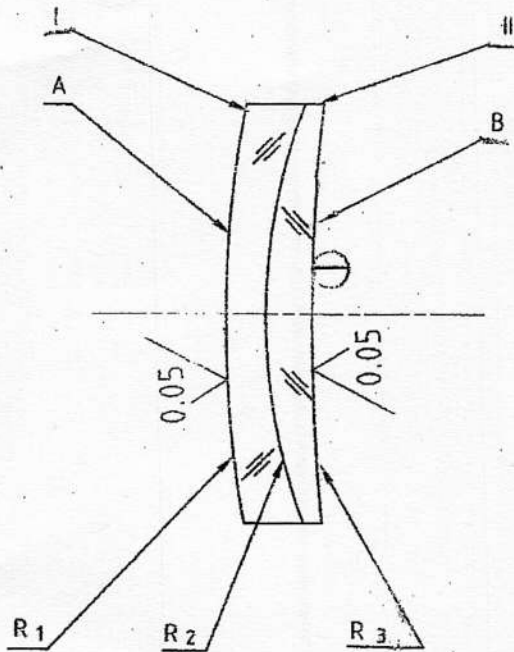
QTY. 01

OLD NO. OLF/R&D/RD.SIGHT/03

		COMPT. No.		ASSY. DRG.		OPTO ELECTRONICS FACTORY DEHRADUN	
		2007		GEN. TOL. IS 2102-m (Pt.-1)		TITLE	
		DRAWN		16/4		WINDOW	
		CHECKED		16.4		REF.	
		HOS		16.4		M	
		NAME		DATE		DRG.No.OLF/R&D/RDS/001.01.10	
D.A.No.	DT./SIGN	DESCRIPTION	AWM/ R&D	M/Yr.	SCALE: 1:1		
AMENDMENTS			APPROVED	4/07	SHTS. 16		SHT. No. 12

MATERIAL: - AS BELOW

SURFACE FINISH: $\sqrt{2.5}$ (\checkmark)



N	3
Δ N	0.5
P	IV
Δ R	0.02
C	0.01
EFL	5

270918

व्यापार हेतु
FOR TRADE ONLY

UN-CONTROLLED COPY
CERTIFIED CORRECT COPY OF APPROVED
DRAWINGS AT THIS DATE 26/4/22
DESIGN & DRAWING OFFICE
ORDNANCE FACTORY, TIRUCHIRAPPALI - 620 016.

ENS No.	DRAWING No.	EFL BFL	GLASS	R ₁	R ₂	R ₃	C.T.	DIA
I	OLF/R&D/RDS/001.01.11	211.51 -109.98	SF-4	81.47 VEX	40.83 CAVE	-	2.7 ±0.1	φ29 -0.025 -0.085
II	OLF/R&D/RDS/001.01.12	109.15 106.23	BK-7	-	40.83 VEX	143.88 CAVE	3.2 ±0.1	φ29 -0.025 -0.085

NOTES :-

- (j) \otimes A & B A.R. COATING FOR VISIBLE 400 nm. - 700 nm. (R < 0.5%)
 - (i) \ominus B REFLECTION AT 630 - 660 nm. (R > 98%) 650 ± 20 nm (R > 70%)
- LENS I & II TO BE GLUED WITH U.V. CEMENT

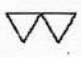
QTY. PER SET : 01

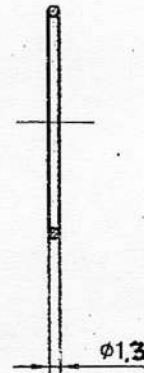
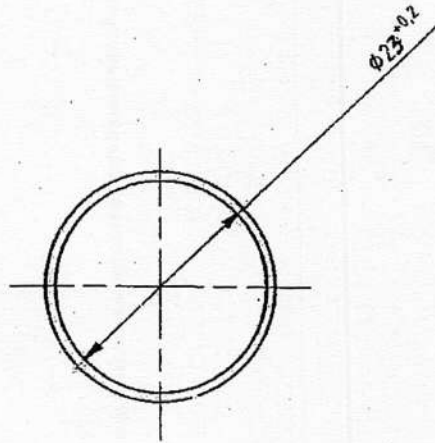
ITEM	DESCRIPTION	No. OFF	MATERIAL	REMARKS
LIST OF PARTS				
COMPT. No.	ASSY. DRG. RED DOT SIGHT	OPTO ELECTRONICS FACTORY DEHRADUN		
GEN. TOL. IS 2102-m (Pt.-1)		TITLE		
DRAWN	Key	16-4	OBJECTIVE LENSES I & II	
CHECKED	Stalru	16-4	REF. M 2	
JWM	Stalru	16-4	DRG.No. OLF/R&D/RDS/001.01.11 OLF/R&D/RDS/001.01.12	
NAME		DATE	SCALE: - 12	
AWM/R&D		M/Yr.	SHTS. 16 SHT. No. 13	
APPROVED		4/107		

JE G M / ac AUTHY:-- OLF/OPTI VC/13D dt. 4/9/15 COATING AMENDED

OLF/DO/DA/ 39/2015

AMENDMENTS

MATERIAL — SYNTHETIC RUBBER NITRILE BLACK BA-3 RHD 51-60 TO BS 275156	TREATMENT —
SURFACE FINISH: 	PROTECTIVE FINISH —



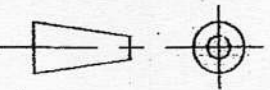
UN CONTROLLED COPY
 CERTIFIED CORRECT COPY OF APPROVED
 DRAWINGS AT THIS DATE 26/4/22
S. Venkatesh
 DESIGN & DRAWING OFFICE,
 ORDNANCE FACTORY, TIRUCHIRAPPALI - 620 016.


270.918

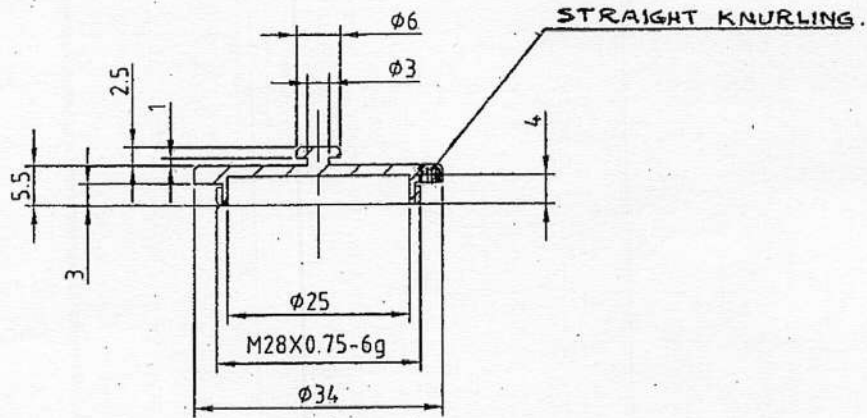
व्यापार हेतु
 FOR TRADE ONLY

No.OFF-01

OLD NO.031003

			ITEM	DESCRIPTION	No. OFF	MATERIAL	REMARKS
LIST OF PARTS							
			COMPT. No.	ASSY. DRG. RED DOT SIGHT	OPTO ELECTRONICS FACTORY DEHRADUN		
			2007	GEN. TOL. IS 2102-m (Pt.-1)	TITLE <u>ORING</u>		
			DRAWN	<i>Ag</i>	16.4	REF. M	
			CHECKED	<i>Q. J. S.</i>	16.4	DRG.No. OLF/R&D/RDS/001.01.13	
			HOS	<i>Q. J. S.</i>	16.4	SCALE: 1:1	
				NAME	DATE	SHTS. 16 SHT. No. 14	
D.A.No.	DT./SIGN	DESCRIPTION	AWM/ R&D	<i>Q. J. S.</i>	M/Yr. 4/22		
AMENDMENTS			APPROVED				

MATERIAL: AL. ALLOY IS:733-83 Gr. 24345(WP)	TREATMENT HARDNESS:
SURFACE FINISH: 	PROTECTIVE FINISH: ANODIC OXIDATION BLACK

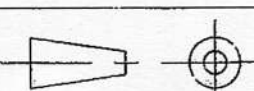



270918

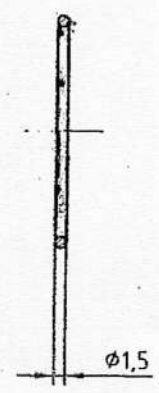
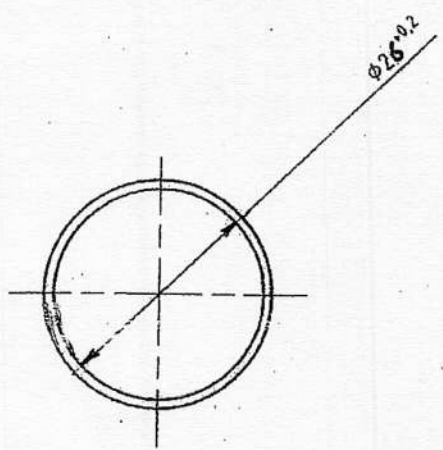
व्यापार हेतु
FOR TRADE ONLY

UN CONTROLLED COPY
CERTIFIED CORRECT COPY OF APPROVED
DRAWINGS AT THIS DATE: 26/4/22
S. Venkatesh 26/4/22
DESIGN & DRAWING OFFICE,
ORDNANCE FACTORY, TIRUCHIRAPPALI-620 016.

QTY: 01

ITEM	DESCRIPTION	No. OFF	MATERIAL	REMARKS
LIST OF PARTS				
COMPT. No.	ASSY. DRG. RED DOT SISHT	OPTO ELECTRONICS FACTORY DEHRADUN		
2012	GEN.TOL IS 2102 (Pt-1):1993-m	TITLE <u>CAP</u>		
DRAWN	<i>[Signature]</i>	6/12	REF. M	
CHECKED	<i>[Signature]</i>	5/6/12		
JWM	NAME	DATE	DRG.No. OLF/R&D/RDS/001,01,014	
D.A.No.	DT./SIGN	DESCRIPTION	WM/ dc	M/Yr. 5/6/12
AMENDMENTS			APPROVED	
			SCALE: 1:1	SHTS. 16 Sh. No. 15

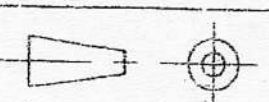
MATERIAL: SYNTHETIC RUBBER NITRILE BLACK BA-3 RHD 51-60 TO BS 2751:56	TREATMENT -
SURFACE FINISH: 	PROTECTIVE FINISH :-



270918
व्यापार हेतु
FOR TRADE ONLY

UN CONTROLLED COPY
CERTIFIED CORRECT COPY OF APPROVED
DRAWINGS AT THIS DATE 25/4/22
DESIGN & DRAWING OFFICE,
ORDNANCE FACTORY, TIRUCHIRAPPALI - 620 016.

No.OFF - 01

ITEM	DESCRIPTION	No. OFF	MATERIAL	REMARKS				
LIST OF PARTS								
COMPT. No.	ASSY. DRG. RED DOT SIGHT	OPTO ELECTRONICS FACTORY DEHRADUN						
2007	GEN. TOL..IS 2102-m (Pt.-1)	TITLE <u>ORING</u>						
DRAWN	<i>Ag</i> 16.4	REF. M1						
CHECKED	<i>Q/S</i> 16.4							
HOS	<i>Q/S</i> 16.4	DRG.No. OLF/R&D/RDS/001.01.016						
	NAME DATE							
D.A No	DT./SIGN	DESCRIPTION	AWM/ R&D	M/Yr. <i>5/10?</i>		SCALE: 1:1	SHTS. 16	SHT. No. 16
AMENDMENTS			APPROVED					

CONTINUED