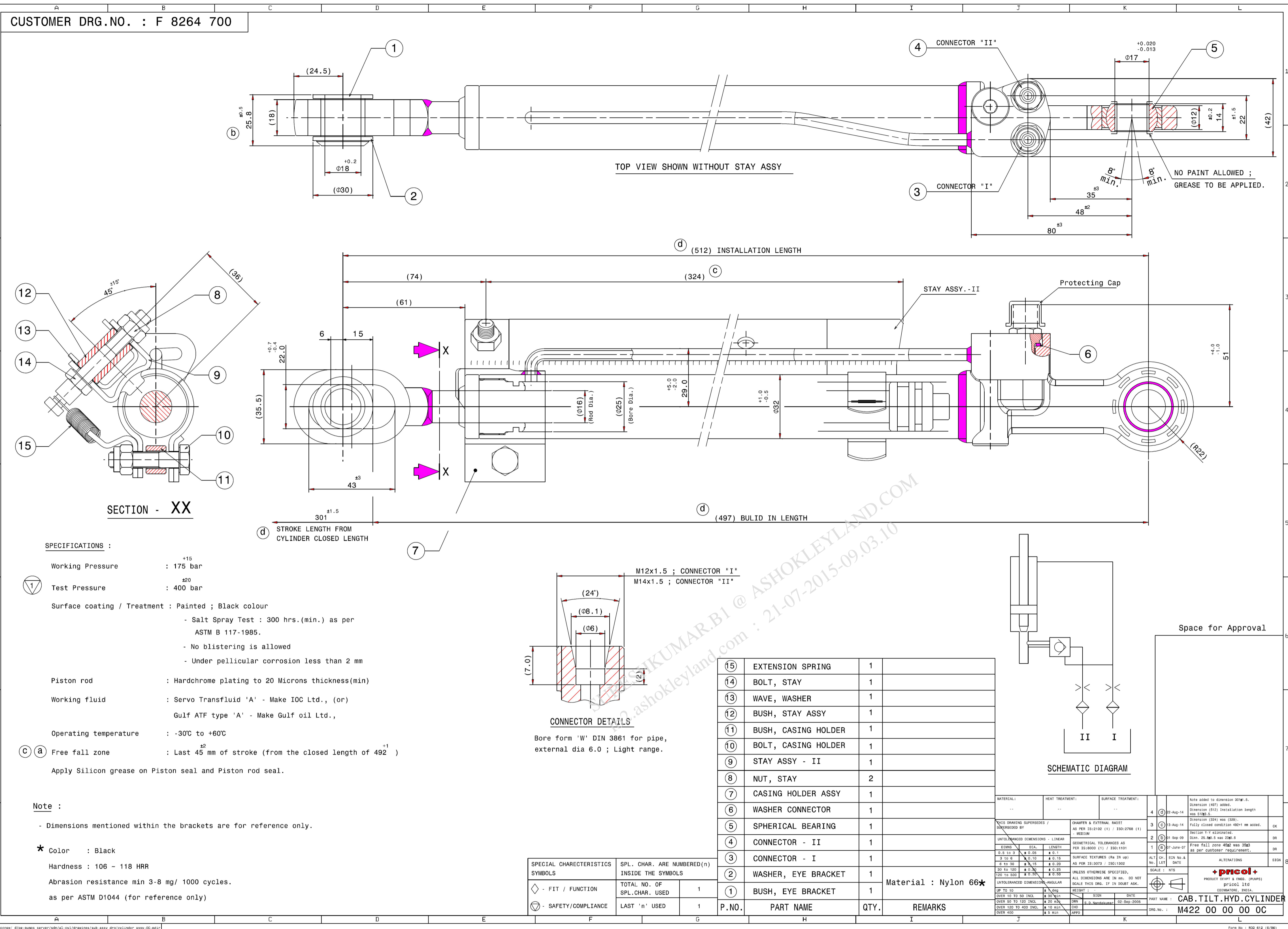




This design is strictly private and confidential. It is the exclusive property of Ashok Leyland Ltd., and must not be used, copied or reproduced in part or whole without the company's written permission.

ASHOK LEYLAND LTD. TECHNICAL CENTRE, VELLIVOLCHAVADI



ALTERATIONS	DR-DIN DATE	QTY. REVISED
SUPPLIER DRAWING APPROVED & RERELEASED ER-DIN:0000217 RP/EA	DATE 15.06.07	- A.0
DRG TEMPLATE UPDATED KV/KG	26.11.10	- A.1
SUPPLIER DRG APPROVAL FOR STAGE - III KV/KG	DATE 08.12.10	- B.0
SURFACE PROTECTION NOTE UPDATED RSK/BSV	27.07.11	- C.0
SUPPLIER DRG UPDATION FOR CLOSED LENGTH 492 MM SURFACE PROTECTION NOTE UPDATED KV/BSK	15-10-14	D

REVISION : D	DATE : 16/10/2014	STATUS : RELEASE
STAGE : III	ER-DIN NO : ER-DIN-0022954	DATE : 16/10/2014
ALTERED BY : sundaralvc	CHECKED BY : sundaralvc	
MED APPROVAL : sunilrajs	APPROVED BY : sunagarjanalvc	
DIGITALLY SIGNED, PHYSICAL SIGNATURE NOT REQUIRED		
DRAWN/ DATE	CHECKED/ DATE	MED APPROVAL/ DATE
HJ 15.2.2006	HJ 15.2.2006	SN 15.2.2006
MATERIAL		
HEAT TREATMENT		
REMARKS		
STALLION MARK III		
DESCRIPTION		
CAB TILT CYLINDER		
PART No.	F 8 2 6 4 7 0 0 D	
SHEET NO.1.....OF.....1....		

M422 00 00 00 0C	F8264700	T02983	16.06.07	100	SN	16.06.07
M422 00 00 00 0C	F8264700	T02274	08.02.06	100	SN	09.02.06
SUPPLIER PART NO	A.L PART NO	SAMPLE TRAIL	PRODUCTION	SAMPLE TRAIL	SAMPLE TRAIL	PRODUCTION
A.L APPROVAL NO. & DATE		QUANTITY	APPROVED BY/DATE			

M422 00 00 00 0C	F8264700	Qty : -	Qty : -	-
Supplier Part No	AL Part No	Sample	Pilot	Production

SPECIAL INSTRUCTIONS/NOTE:

THIS DRG. CONTAINS	() CRITICAL	() SAFETY	() IMPORTANT	CHARACTERISTICS
UNLESS OTHERWISE SPECIFIED				
TOLERANCES	REFER IS:2102; MEDIUM FOR MACHINING AND COARSE FOR FABRICATION			
SURFACE PROTECTION	TO MEET THE REQUIREMENT OF ALS.268.03			
SURFACE FINISH AS PER IS:3073 (CLA VALUE)	METRIC SCREW THREADS SHALL CONFORM TO THE LIMITS AND TOLERANCES SPECIFIED IN THE CURRENT IS:4218 CLASS 6g EXTERNAL OR 5H INTERNAL.		SHARP EDGES TO BE REMOVED DIMENSIONS ARE IN MM DO NOT SCALE DRAWING	

BILL OF MATERIALS			
APPEARANCE ITEM	ER-DIN	DATE	
FINISHED WEIGHT (APPROX)	REF. PT. NO.	F7870520	
2 Kgs	S/A PT No.	-----	
SCALE	SUPERSEDES	-----	
NTS	SPEC NO.	HACM21/2	

A.0

