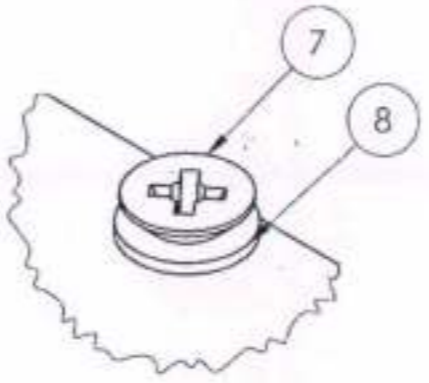
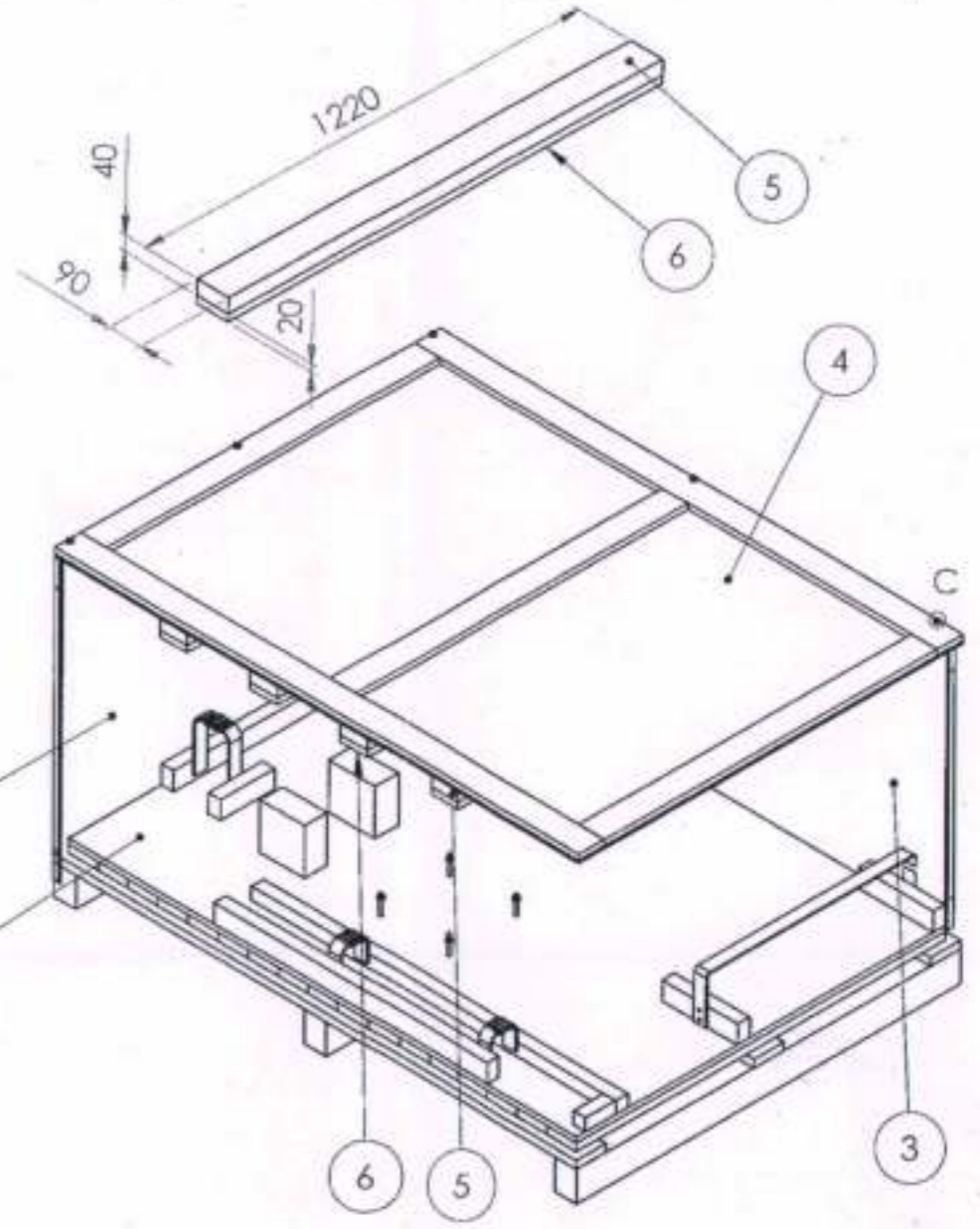
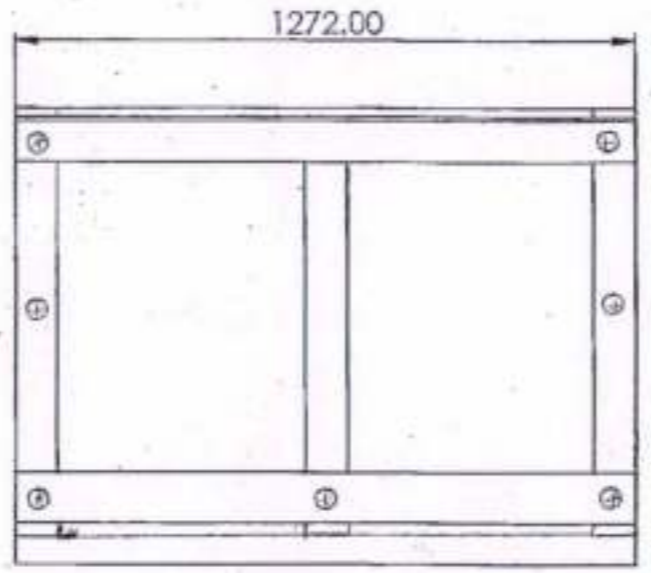


17/09/21. 8



DETAIL C

Internal Dimensions[mm]:  
1700X1220X900

UN CONTROLLED COPY  
IDENTIFIED CORRECT COPY  
OF APPROVED DRAWINGS  
AT THIS DATE 16.09.21

Design & Drawing Office  
Ordnance Factory,  
Tiruchirappalli

QTY.	DESCRIPTION	MATERIAL	ITEM NO.
1	PALLET	REFER ASSY.	1
2	SIDE WALL	REFER ASSY.	2
2	FRONT/REAR WALL	REFER ASSY.	3
1	TOP WALL	REFER ASSY.	4
4	SUPPORT BEAM	PINEWOOD	5
4	SUPPORT FOAM	GA-25	6
AS PER REQUIREMENT.	DIA.5X75 LENGTH CSK.PHILLIPS FLAT HEAD WOODEN SCREW.	STD.	7
	WASHER	STD.	8

MATERIAL:		UNLESS OTHERWISE SPECIFIED:	
FINISH:		<b>MACHINING REQUIREMENTS</b>	
SURFACE ROUGH. $\sqrt{1/1}$		BREAK SHARP CORNERS AND EDGES 0.2 MAX FILLET RADIUS 0.4 MAX C/SINK INT. THREADS 90° TO MAJOR DIA CHAMFER EXT. THREADS 45° TO MAJOR DIA	
		<b>GENERAL TOLERANCES:</b>	
		0 - 10	±1.0
		10 - 100	±2.0
		100 - 500	±3.0
		500 - 1000	±4.0
		1000 +	±8.0
		ANGLES	±0.5°
		HOLES	±0.5
		BETWEEN HOLES	±0.2
DRAWN: [Signature]		UNLESS OTHERWISE SPECIFIED: ALL DIMENSIONS IN MM & INCLUDE FINISH. DO NOT SCALE DRAWING.	
HOS/DDO: [Signature]		P/N: Y36314A-00	
OFFICER/DDO: [Signature]		ASSY	
PROJECT OFFICER: [Signature]		DWG No. FC-ELB000411*	
WEIGHT:		SCALE none	

**ORDNANCE FACTORY TIRUCHIRAPPALLI**

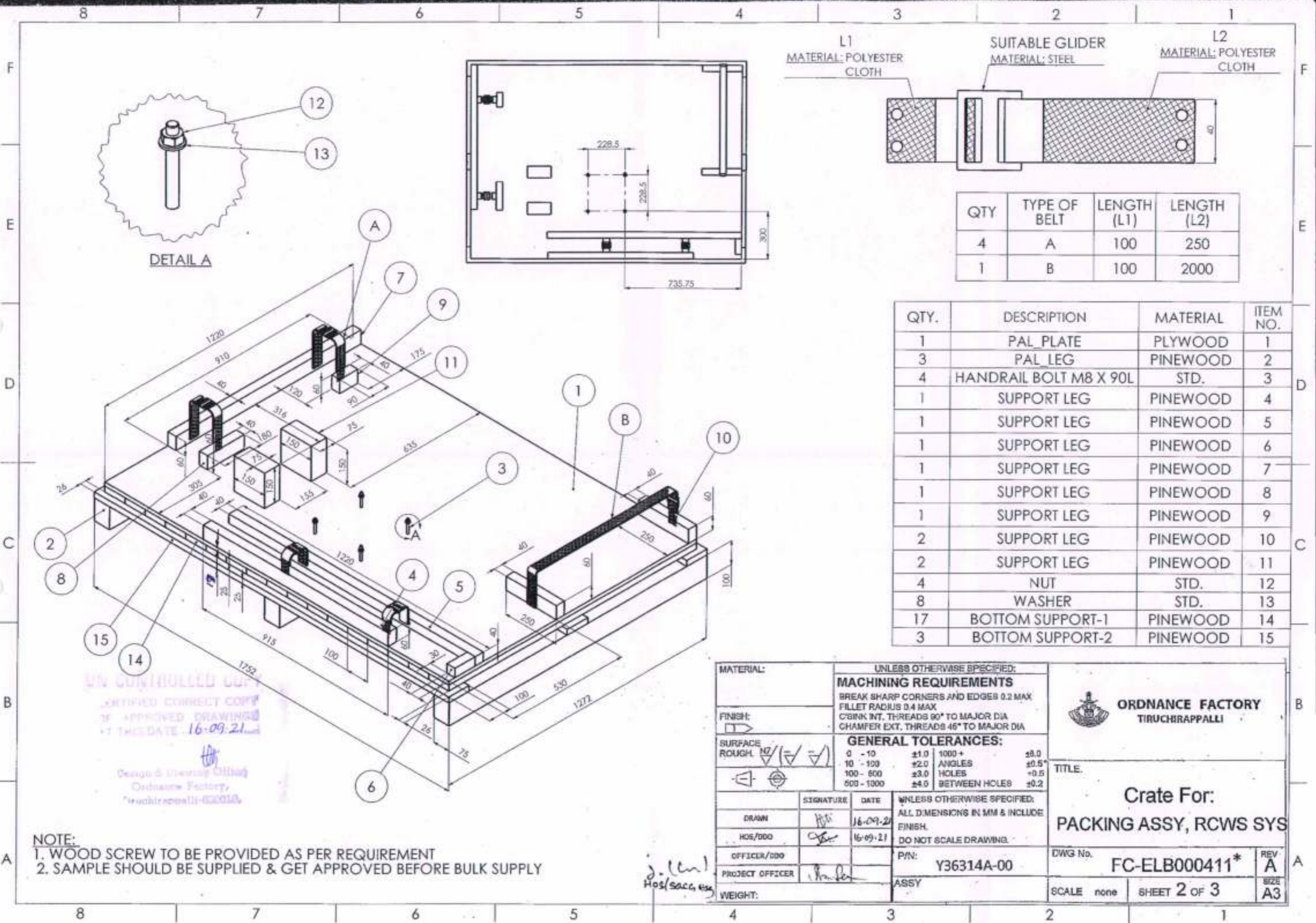
TITLE: **Crate For: PACKING ASSY, RCWS SYS**

DWG No. **FC-ELB000411\***

SCALE none SHEET **1** OF **3**

REV **A** SIZE **A3**

ALL WOOD PARTS MUST BE TREATED  
ACCORDING TO ISPM15



L1 MATERIAL: POLYESTER CLOTH  
 SUITABLE GLIDER MATERIAL: STEEL  
 L2 MATERIAL: POLYESTER CLOTH

QTY	TYPE OF BELT	LENGTH (L1)	LENGTH (L2)
4	A	100	250
1	B	100	2000

QTY.	DESCRIPTION	MATERIAL	ITEM NO.
1	PAL PLATE	PLYWOOD	1
3	PAL_LEG	PINEWOOD	2
4	HANDRAIL BOLT M8 X 90L	STD.	3
1	SUPPORT LEG	PINEWOOD	4
1	SUPPORT LEG	PINEWOOD	5
1	SUPPORT LEG	PINEWOOD	6
1	SUPPORT LEG	PINEWOOD	7
1	SUPPORT LEG	PINEWOOD	8
1	SUPPORT LEG	PINEWOOD	9
2	SUPPORT LEG	PINEWOOD	10
2	SUPPORT LEG	PINEWOOD	11
4	NUT	STD.	12
8	WASHER	STD.	13
17	BOTTOM SUPPORT-1	PINEWOOD	14
3	BOTTOM SUPPORT-2	PINEWOOD	15

MATERIAL:	UNLESS OTHERWISE SPECIFIED:		
FINISH:	<b>MACHINING REQUIREMENTS</b> BREAK SHARP CORNERS AND EDGES 0.2 MAX FILLET RADIUS 0.4 MAX C/SINK INT. THREADS 90° TO MAJOR DIA CHAMFER EXT. THREADS 45° TO MAJOR DIA		
SURFACE ROUGH:	<b>GENERAL TOLERANCES:</b>		
	0 - 10	±1.0	1000+ ±0.0
	10 - 100	±2.0	ANGLES ±0.5°
	100 - 500	±3.0	HOLES ±0.5
	500 - 1000	±4.0	BETWEEN HOLES ±0.2
DRAWN:	SIGNATURE:	DATE:	UNLESS OTHERWISE SPECIFIED:
HOS/DDO:			ALL DIMENSIONS IN MM & INCLUDE FINISH.
OFFICER/DDO:			DO NOT SCALE DRAWING.
PROJECT OFFICER:			P/N: Y36314A-00
WEIGHT:			ASSY

**ORDNANCE FACTORY TIRUCHIRAPPALLI**

TITLE: **Crate For: PACKING ASSY, RCWS SYS**

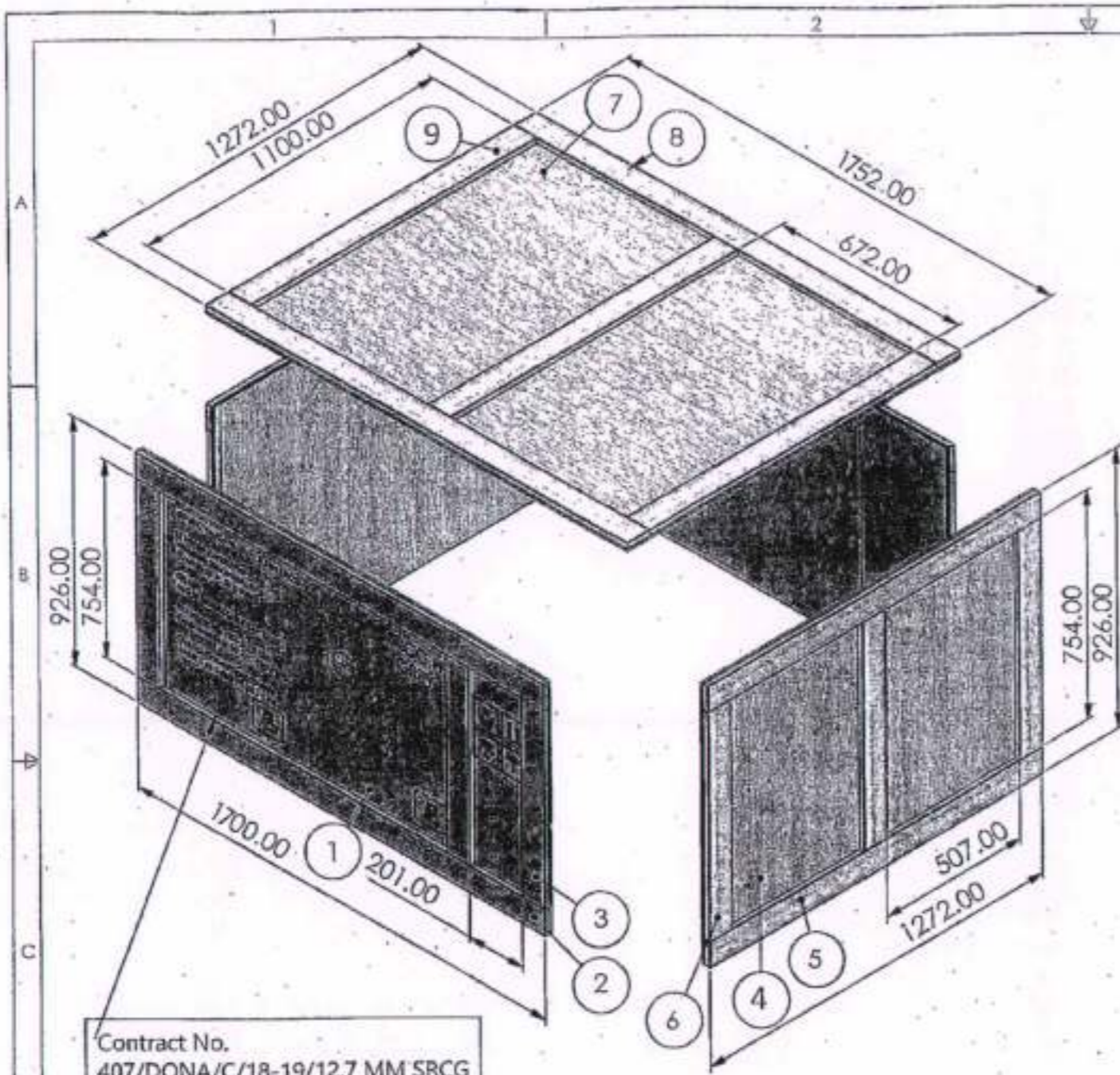
DWG No. **FC-ELB000411\*** REV **A**

SCALE none SHEET **2 OF 3** SIZE **A3**

**NOTE:**  
 1. WOOD SCREW TO BE PROVIDED AS PER REQUIREMENT  
 2. SAMPLE SHOULD BE SUPPLIED & GET APPROVED BEFORE BULK SUPPLY

UN CONTROLLED COPY  
 CERTIFIED CORRECT COPY  
 IF APPROVED DRAWINGS  
 AT THIS DATE: 16-09-21  
 Design & Drawing Office  
 Ordnance Factory,  
 Tiruchirappalli-620016

*J. (L)*  
 Hos/sacc, etc



Qty	Length	Width	Thickness	Material	Part	No
2	1700	926	8	Plywood	Front/Rear wall1	1
4	1700	86	18	Pinewood	Front/Rear Bar1	2
6	754	86	18	Pinewood	Front/Rear Bar2	3
2	1272	926	8	Plywood	Side wall1	4
4	1272	86	18	Pinewood	Side Bar1	5
6	754	86	18	Pinewood	Side Bar2	6
1	1752	1272	8	Plywood	Top Wall1	7
2	1752	86	18	Pinewood	Top Bar1	8
3	1100	86	18	Pinewood	Top Bar2	9

Contract No.  
407/DONA/C/18-19/12.7 MM SRCG

Ultimate consignee:

Consignor:  
Ordnance Factory, Tiruchirappalli

Gross/net weight: kg / 275

Overall dimensions/volume:  
cm/cu m 175X127X100/ 2.23

UN CONTROLLED COPY

UNIDENTIFIED CORRECT COPY  
OF APPROVED DRAWINGS  
AT THIS DATE 16-09-21

Design & Drawing Office  
Ordnance Factory,  
Tiruchirappalli-620016

MATERIAL:	UNLESS OTHERWISE SPECIFIED:		<p>ORDNANCE FACTORY TIRUCHIRAPPALLI</p>
FINISH:	<b>MACHINING REQUIREMENTS</b> BREAK SHARP CORNERS AND EDGES 0.2 MAX. FILLET RADIUS 0.4 MAX. C/BK INT. THREADS 90° TO MAJOR DIA. CHAMFER EXT. THREADS 45° TO MAJOR DIA.		
SURFACE ROUGH:	<b>GENERAL TOLERANCES:</b> 0 - 10 ±1.0 100+ ±0.0 10 - 100 ±2.0 ANGLES ±0.5 100 - 500 ±3.0 HOLES ±0.5 500 - 1000 ±4.0 BETWEEN HOLES ±0.2		
DRAWN	SIGNATURE	DATE	TITLE <b>Crate For: PACKING ASSY, RCWS SYS</b>
HOS/100		16-09-21	
OFFICER/100			DWG No. <b>FC-ELB000411*</b> REV <b>A</b> SCALE: none SHEET <b>3 OF 3</b> SIZE <b>A3</b>
PROJECT OFFICER			
WEIGHT:	P/N: <b>Y36314A-00</b> ASSY		

2.1 (cont.)  
HOS/SRCC/003