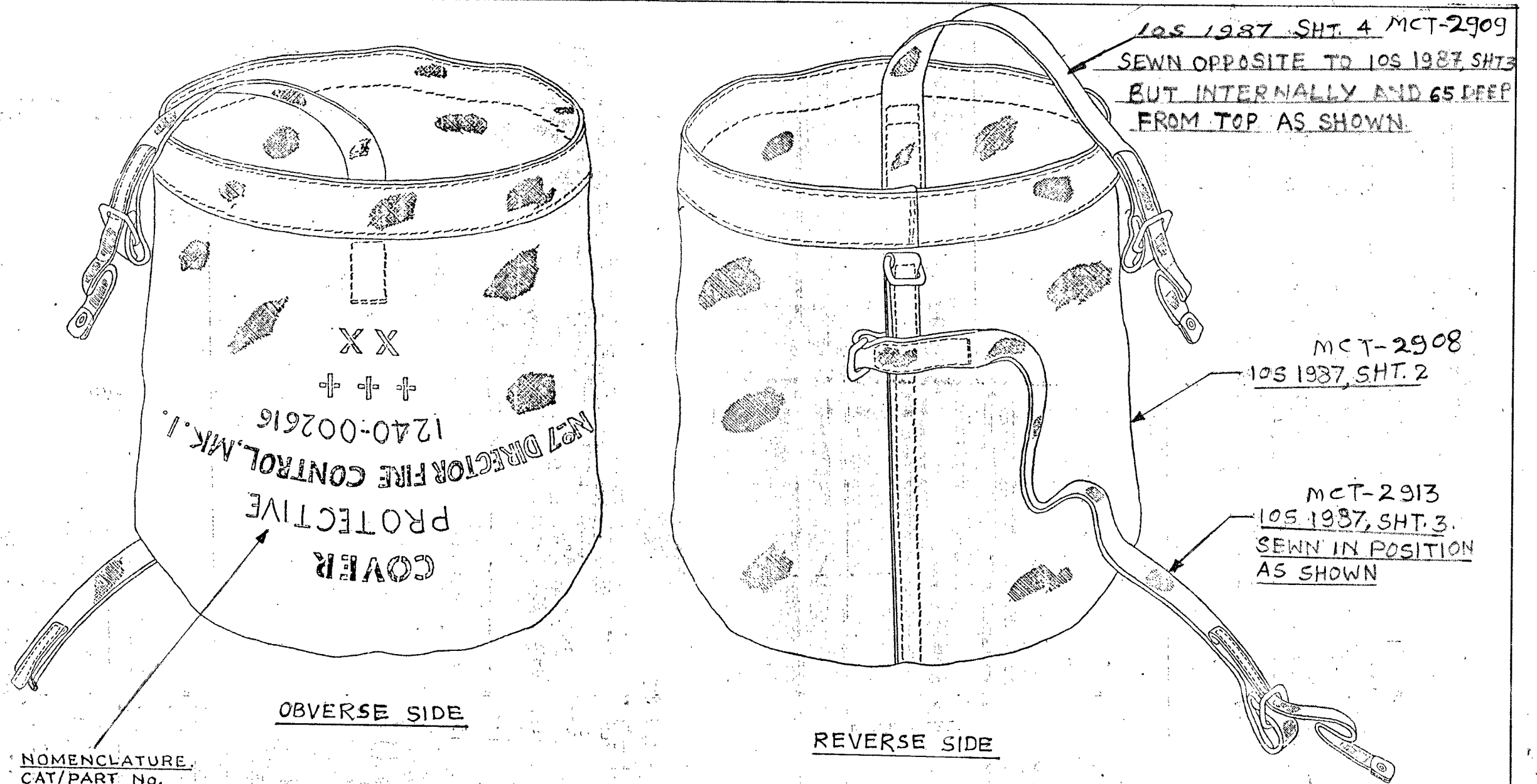


MCT-2907



**NOMENCLATURE.**  
**CAT/PART No.**  
**MANUFACTURER'S INITIALS (++) &**  
**YEAR OF MANUFACTURE (XX)**  
**TO BE STENCILLED IN 12 mm CHARACTERS**  
**WITH WATER-PROOF INK AS SHOWN.**

- NOTE:-**
- SEWING TO BE DONE WITH 6 STITCHES PER 25 mm.  
 USING SEWING COITON, 60 TEX/3 OG TO SPEC IND/TC/0279 LATEST
  - END OF 105 1987, SHT. 4 TO BE HEMMED BY 13 mm/
  - ENDS OF WEBS TO BE STRENGTHENED WITH EXTRA STITCHING.

ALL DIMENSIONS ARE IN mm

<b>ORDNANCE FACTORY DEHRADUN</b>	DR:- S.K.THAPLIYAL	<b>DIRECTOR FIRE CONTROL No.7 M.K.-1 COVER PROTECTIVE</b>	DT: 10.06.2010	SCALE:- N.T.S.
	TR:-		MATL	TREAT
	CH:- <i>[Signature]</i>			
	APPROVED.		SHTS:- 1	SHT. No:- 1
<i>[Signature]</i> JWM/DO.	<i>[Signature]</i> WM/P <sub>2</sub>	DRG. No.- CII(1)-76 Sheet No-1	AMENDMENTS. OFD/DO/002	<b>DRAWING No.- MCT-2907</b>

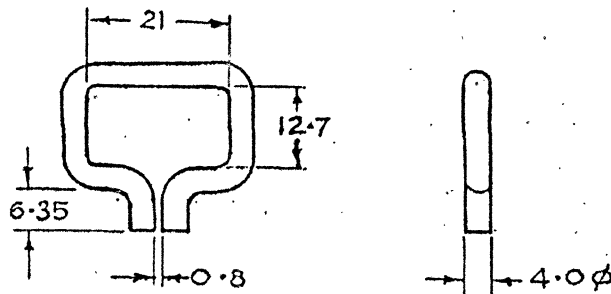
**DIRECTOR FIRE CONTROL No.7 M.K.-1**  
**COVER PROTECTIVE**

DRG No.:-

C(11)-76 Sheet-No-5

LOOP

MCT-2910



MATL:- WIRE, BRASS, 4.00  $\phi$  IS: 4413 / CUZN 30/0  
OR CUZN 37/0.

FINISH:- POLISHED OR BRONZED.

METRIC

LOOP, BRASS, 19 mm.

ALL DIMENSIONS ARE MM.  
 IMPORTANT DIMENSIONS MARKED THUS ●  
 INFORMATION MARKED THUS † TO BE MARKED ON.

DT:- 10.6.2010 SCALE-N.T.S.

	DR.- S.K.THAPLIYAL	<u>MATL</u>	<u>TREAT</u>
	TR.-	AS ABOVE	AS ABOVE
	CH.- <i>sk</i>	SHTS.- /	SHT. NO.- /
	<u>APPROVED.</u>	<b><u>DRAWING No.-</u></b> <b><u>MCT- 2910</u></b>	
AMENDMENTS.	<i>sk</i>		
OFD/DO/002	JWM/DO. <i>WM/Pz</i>		

ORDNANCE FACTORY, DEHRADUN.

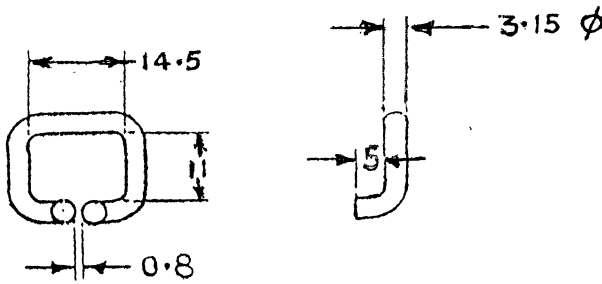
**DIRECTOR FIRE CONTROL No.7 M.K.-1**  
**COVER PROTECTIVE**

DRG No.

C(1)-76 sheet-No-6

LOOP

MCT-2911



METRIC

LOOP, BRASS, 13 mm

MATL:- WIRE, BRASS, 3.15  $\phi$   
IS: 4413/cuZn 30/0 OR cuZn 37/0

FINISH:- POLISHED OR BRONZED.

ALL DIMENSIONS ARE MM.

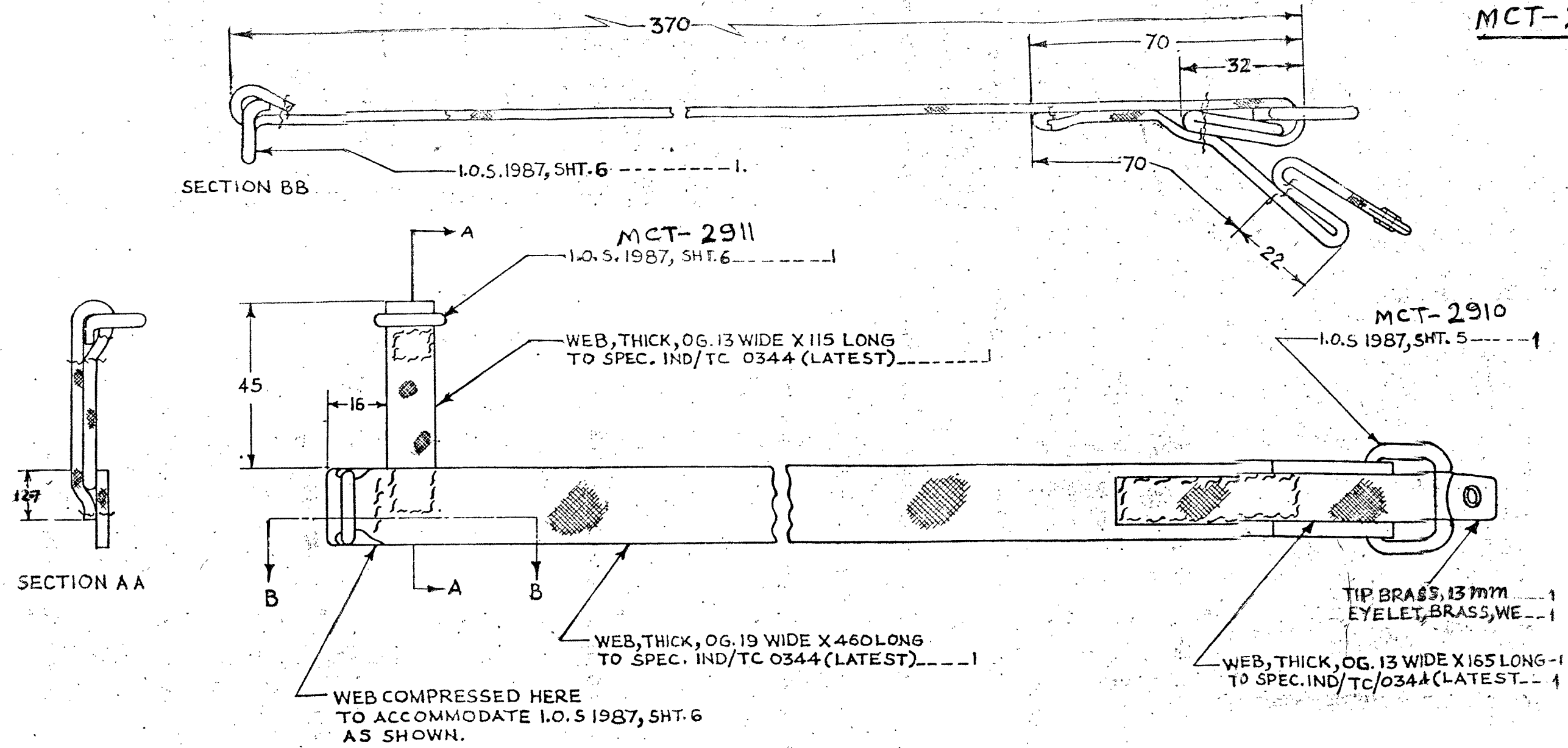
IMPORTANT DIMENSIONS MARKED THUS ●

INFORMATION MARKED THUS † TO BE MARKED ON

		DT:- 10.6.10	SCALE-N.T.S.
	DR.- S.K.THAPLIYAL	<u>MATL.</u>	<u>TREAT</u>
	TR.-	AS ABOVE	AS ABOVE
	CH - <i>[Signature]</i>	SHTS.- 1	SHT. NO.- 1
	APPROVED.	<b><u>DRAWING No.-</u></b> <b><u>MCT-2911</u></b>	
AMENDMENTS.	<i>[Signature]</i>		
OFD/DO/002	JWM/DO. <i>[Signature]</i> WM/Pz.		

ORDNANCE FACTORY, DEHRADUN.

MCT-2913



STRAP EXTERNAL

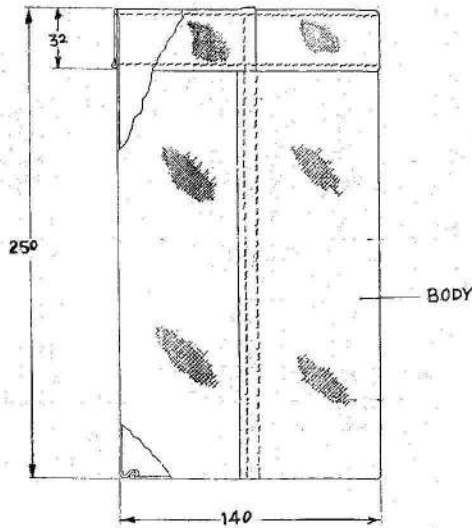
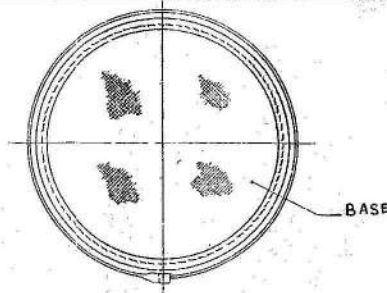
- NOTE:-
1. CUSTOMARY DOTTED LINES & REMOTE PROJECTIONS ARE OMITTED FOR CLARITY.
  2. SEWING TO BE DONE WITH 6 STITCHES PER 25 MM USING SEWING COTTON, 60 TEX/3 30 G TO SPEC. IND/TC/0279 (LATEST).
  3. ENDS OF WEBS TO BE HEMMED WHEREVER NECESSARY.

MATL:- AS ON DRG.  
FINISH:- CLEAN

ALL DIMENSIONS ARE IN mm.

ORDNANCE FACTORY DEHRADUN	DR:- S.K.THAPLIYAL	<b>DIRECTOR FIRE CONTROL No.7 M.K.-1</b> <b>COVER PROTECTIVE</b>	DT:- 10.06.2010	SCALE:- N.T.S.
	TR:-		MATL	TREAT
	CH:- <i>[Signature]</i>		SHTS:- 1	SHT. No:- 1
	APPROVED: <i>[Signature]</i> JWM/DO		DRG. No.- CI(1)-76 Sheet-160-3	AMENDMENTS. OFD/DO/002

MCT-2908



NOTE:-

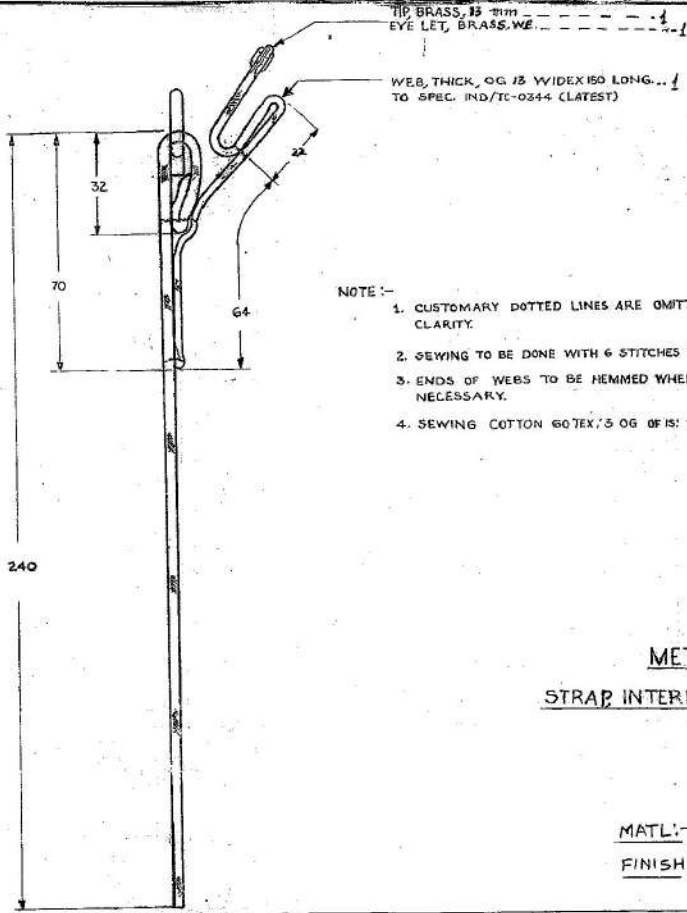
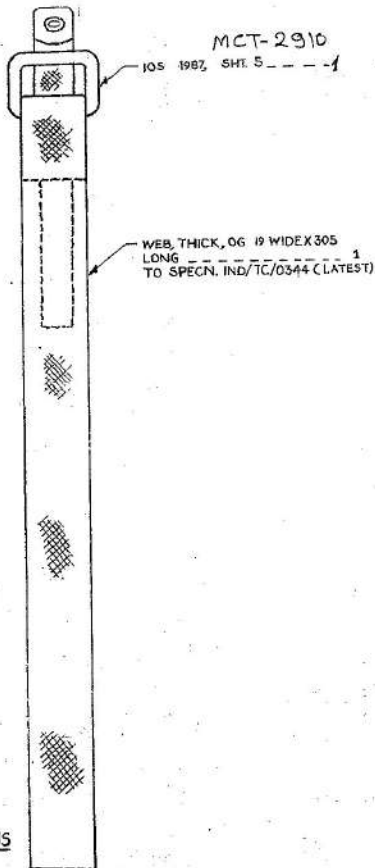
1. CUSTOMARY DOTTED LINES AND REMOTE PROJECTIONS ARE OMITTED FOR CLARITY
2. VERTICAL EDGES OF BODY, TURNED UPPER EDGE OF BODY AND BASE TO BODY TO BE SEWN AS SHOWN
3. STITCHES 8 PER 25 mm USING SEWING COTTON 60 TEX/30G TO SPEC. IND/TC/0279/LATEST
4. EDGES TO BE HEMMED WHEREVER NECESSARY

(b)

MATL:-  
DUCK, COTTON, 610g/m<sup>2</sup> (H2/B306-000194)  
(VARIETY No.2) CONFORMING TO IS:1422-83  
AND WATER PROOFNESS TO IS:6805-72.

ALL DIMENSIONS ARE IN mm.

<b>ORDNANCE FACTORY DEHRADUN</b>	DR:- S.K.THAPLIYAL	<b>DIRECTOR FIRE CONTROL No.7 M.K.-1 COVER PROTECTIVE CASE</b>	DT:- /0.06.2010	SCALE:- N.T.S.	
	TR:-		MATL	TREAT	
	CH:- <i>[Signature]</i>		DRG. No.- CKU-76 Sheet-2	SHTS:- /	SHT. No.- /
	APPROVED <i>[Signature]</i> JWM/DO. <i>[Signature]</i> WM/P2		AMENDMENTS: DFD/DO/002	<b>DRAWING No.- MCT-2908</b>	



- NOTE :-
1. CUSTOMARY DOTTED LINES ARE OMITTED FOR CLARITY.
  2. SEWING TO BE DONE WITH 6 STITCHES PER 25 mm
  3. ENDS OF WEBS TO BE HEMMED WHEREVER NECESSARY.
  4. SEWING COTTON 60TEX, 5 OG OF IS: IND/TC/0279.

METRIC  
STRAP INTERNAL

MATL:- AS ON DRG  
FINISH:- CLEAN

ALL DIMENSIONS ARE IN MM.

ORDNANCE FACTORY DEHRADUN	DR:- SK THAPLIYAL	DIRECTOR FIRE CONTROL No.7 M.K.-1 COVER PROTECTIVE STRAP INTERNAL		DT:- 10.06.2010	SCALE:- N.T.S.
	TR:-			MATL	TREAT
	CH:-	APPROVED	SHTS:- 1	SHT. No:- 1	
	JWM/DO	DRG. No.- C(1)-76 Sheet No-4	AMENDMENTS	DRAWING No.- MCT-2909	
			OFD/DO/002		