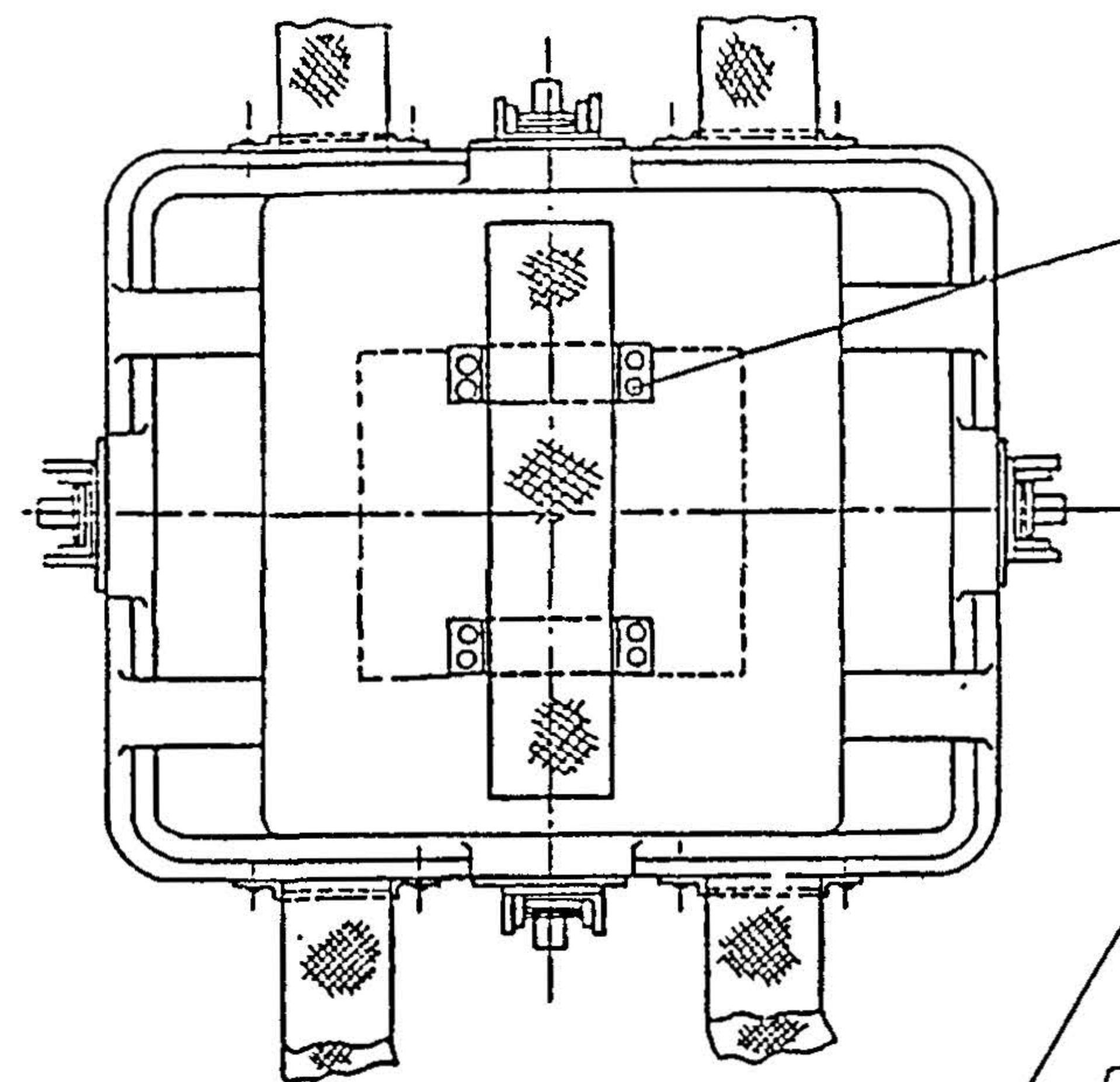
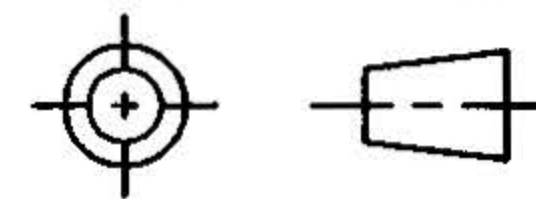


THIRD ANGLE PROJECTION



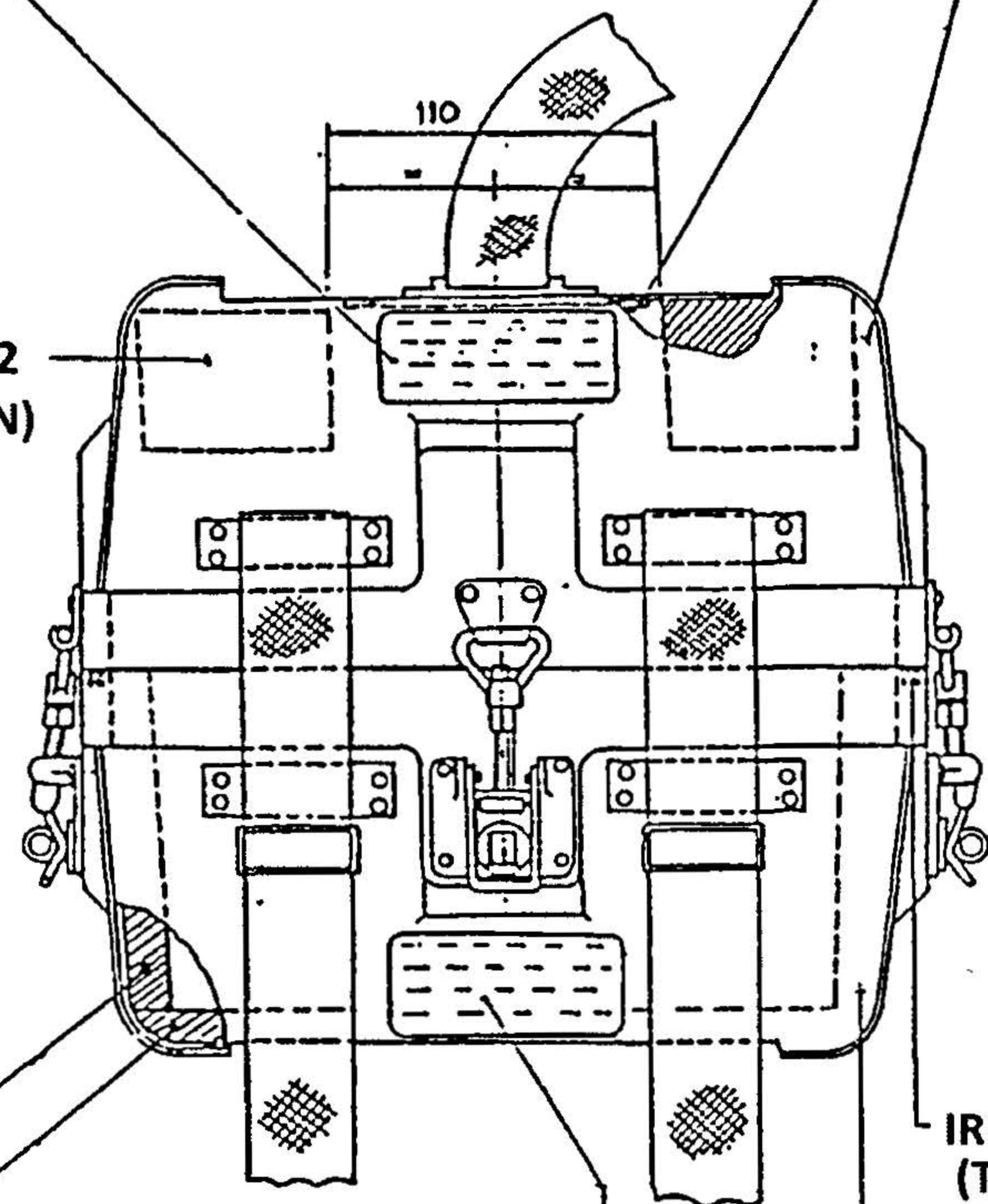
IRDE-1613/8 ----- 10

CWC-250/1 ----- 1  
(TO BE RIVETED/GLUED CENTRALLY AS SHOWN)

CWC-250/3 ----- 1  
(TO BE GLUED IN POSITION AS SHOWN)

IRDE-2030/2 ----- 1  
RIVET, SNAP HD. , Ø2.5 x14, IS:2155 STEEL ----- 8  
RIVET, SNAP HD. , Ø2.0 x 7, IS:2155 STEEL ----- 16  
RIVET, SNAP HD. , Ø2.0 x 8, IS:2155 STEEL ----- 8  
PUNCHED WASHER A 2.9, IS:2016 BRASS ----- 8  
PUNCHED WASHER A 2.5, IS:2016 BRASS ----- 8

IRDE -2030/6 ----- 2  
(TO BE GLUED IN POSITION AS SHOWN)



IRDE -2030/8 ----- 1  
(TO BE GLUED IN POSITION AS SHOWN)

IRDE -2030/7 ----- 1  
(TO BE GLUED IN POSITION AS SHOWN)

IRDE -2030/9 ----- 1  
(TO BE GLUED WITH IRDE-2030/1 AS SHOWN)

IRDE-328 ----- 3  
(CAT. PART No. 5325-000211)

IRDE-328/4 ----- 1  
RIVET, SOLID, STEEL, FLAT HD. 3 x 12 LG.  
IS:2155 ----- 2

IRDE-2030/1 ----- 1  
RIVET, SNAP HD. , Ø2.5 x 8, IS:2155 STEEL ----- 16  
RIVET, SNAP HD. , Ø2.0 x 7, IS:2155 STEEL ----- 16  
PUNCHED WASHER A 2.9, IS:2016 BRASS ----- 16

CWC-250/2 ----- 1  
(TO BE RIVETED/GLUED CENTRALLY AS SHOWN)

STRAP, WEB COTTON, VDD OG COLOUR TO IS:6488-1987, 38 WIDE x 2.5 THICK x 225 LG. ----- 1  
(END TO BE FOLD & STITCHED AS SHOWN)

IRDE-379/9 ----- 1  
(END TO BE CLOSED TO FORM HINGE)

STRAP, WEB COTTON, VDD OG COLOUR IS:6488-1987 38 WIDE x 2.5 THICK x 1500 LG. ----- 2

BUCKLE BRASS, QUICK RELEASE 38 mm ----- 2  
(CAT/No. CN/8315 - 000036)

TIP BRASS 38 mm. ----- 2  
(CAT/No. CN/AA 1884)

EYE LET BRASS ----- 4  
(CAT/No. CN/8315 - 000048)

IRDE-379/16 ----- 1

IRDE-379/15 ----- 1

IRDE-328/1 ----- 1

IRDE-328/3 ----- 1

IRDE-328/5 ----- 1

ALL DIMENSIONS ARE MM.

**ORDNANCE FACTORY  
DEHRADUN**

DR.:- R.K.SHARMA

TR. :-

CH. :-

APPROVED. *Lochan*  
(KULDEEP SAINI) (LOCHAN MEENA)  
JWM/DO. AWM/Plg.

**CASE CARRYING  
GOGGLES NIGHT VISION PASSIVE M1**

DT.-27.11.2017 SCALE - N.T.S.

MATL. TREAT

SHEETS- 1 SHEET No.- 1

AMENDMENTS.

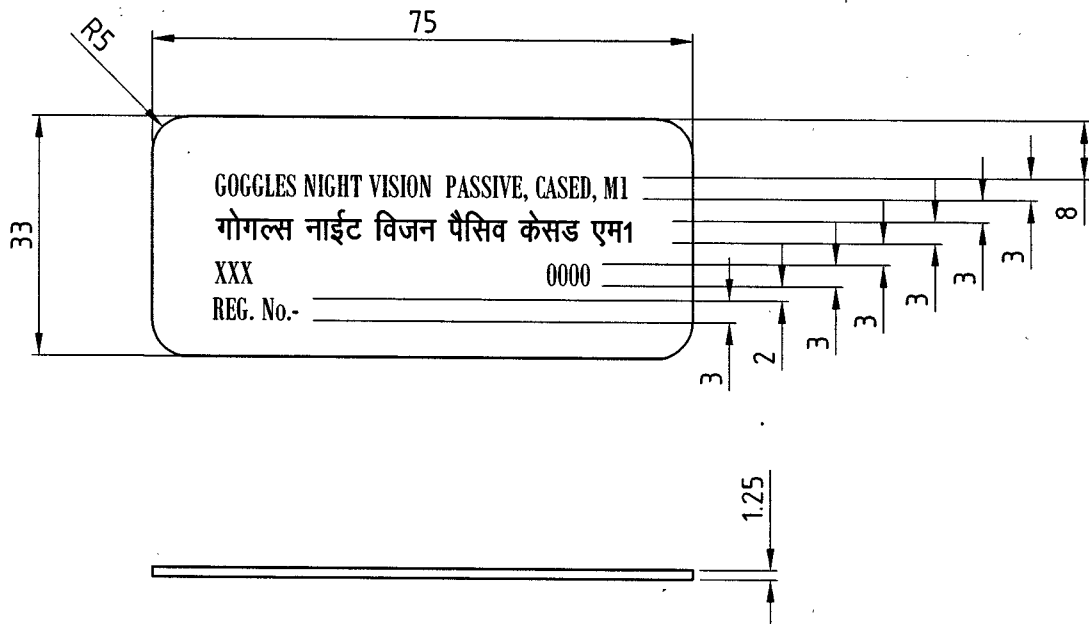
OFD/DO/002.

**DRG.No.:-CWC-250**

# CASE CARRYING, GOGGLES NIGHT VISION PASSIVE, M1

## PLATE, IDENTIFICATION

 THIRD ANGLE PROJECTION





**NOTE-** ALL LETTERS & FIGURES TO BE PHOTO-ETCHED OR PHOTO PRINTED IN WHITE AND BACKGROUND TO BE BLACK

XXX - MANUFACTURER'S INITIAL  
0000 - YEAR OF SUPPLY

**MATL.:-** AL.ALLOY, Gde-19000, Hx2, TO IS: 737-2008,  
**FINISH:-** CLEAN

DIMENSIONS ARE IN M/M.  
IMPORTANT DIMENSIONS MARKED THUS ●  
INFORMATION MARKED THUS † TO BE MARKED ON

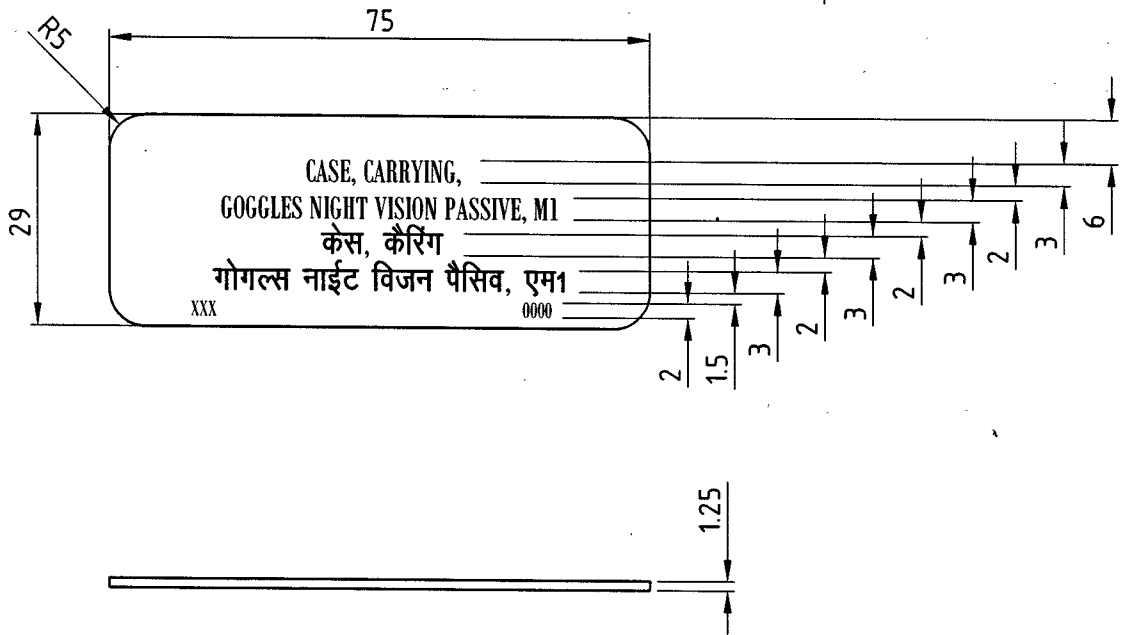
		DT.12-10-17	SCALE-1:1
		● <u>MATL.</u>	● <u>TREAT.</u>
		AS ABOVE	AS ABOVE
		SHEETS-1	SHTS.-1
APPROVED.		<b>DRAWING NO-</b>	
AMENDMENTS.	 (A.JAY SINGH) HOS/D.O.	 (LOCHAN MEENA) AWM/Plg.	<b>CWC-250/1</b>
OFD/DO/002			

ORDNANCE FACTORY, DEHRADUN.

# CASE CARRYING, GOGGLES NIGHT VISION PASSIVE, M1

## PLATE, IDENTIFICATION

THIRD ANGLE PROJECTION





**NOTE-** ALL LETTERS & FIGURES TO BE PHOTO-ETCHED OR PHOTO PRINTED IN WHITE AND BACKGROUND TO BE BLACK

XXX - MANUFACTURER'S INITIAL  
0000 - YEAR OF SUPPLY

**MATL.:-** AL.ALLOY, Gde-19000, Hx2, TO IS: 737-2008,  
**FINISH:-** CLEAN

DIMENSIONS ARE IN M/M.  
IMPORTANT DIMENSIONS MARKED THUS ●  
INFORMATION MARKED THUS † TO BE MARKED ON

		DT.12-10-17	SCALE-1:1
	DR.- P.C.SINGH	M <u>A</u> T <u>L</u> .	T <u>R</u> E <u>A</u> T.
	TR.-	AS ABOVE	AS ABOVE
	CH.	SHEETS-1	SHTS.-1
AMENDMENTS.	APPROVED.	<b>DRAWING NO-</b>	
OFD/DO/002	 (AJAY SINGH) HOS/D.O.	 (LOCHAN MEENA) AWM/Plg.	<b>CWC-250/2</b>

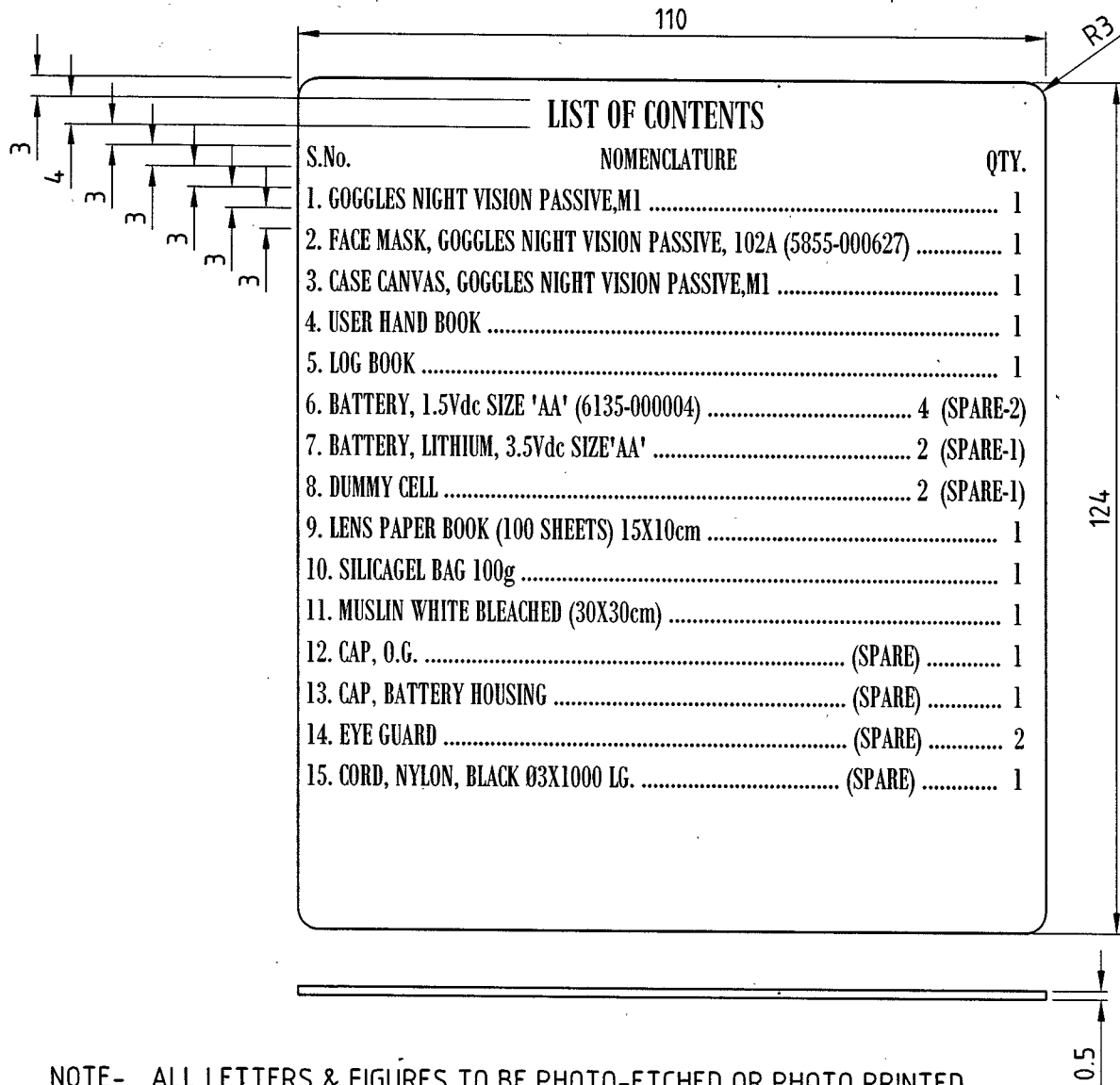
ORDNANCE FACTORY, DEHRADUN.

# CASE CARRYING, GOGGLES NIGHT VISION PASSIVE, M1

## LABEL

ORDNANCE FACTORY, DEHRADUN.

THIRD ANGLE PROJECTION



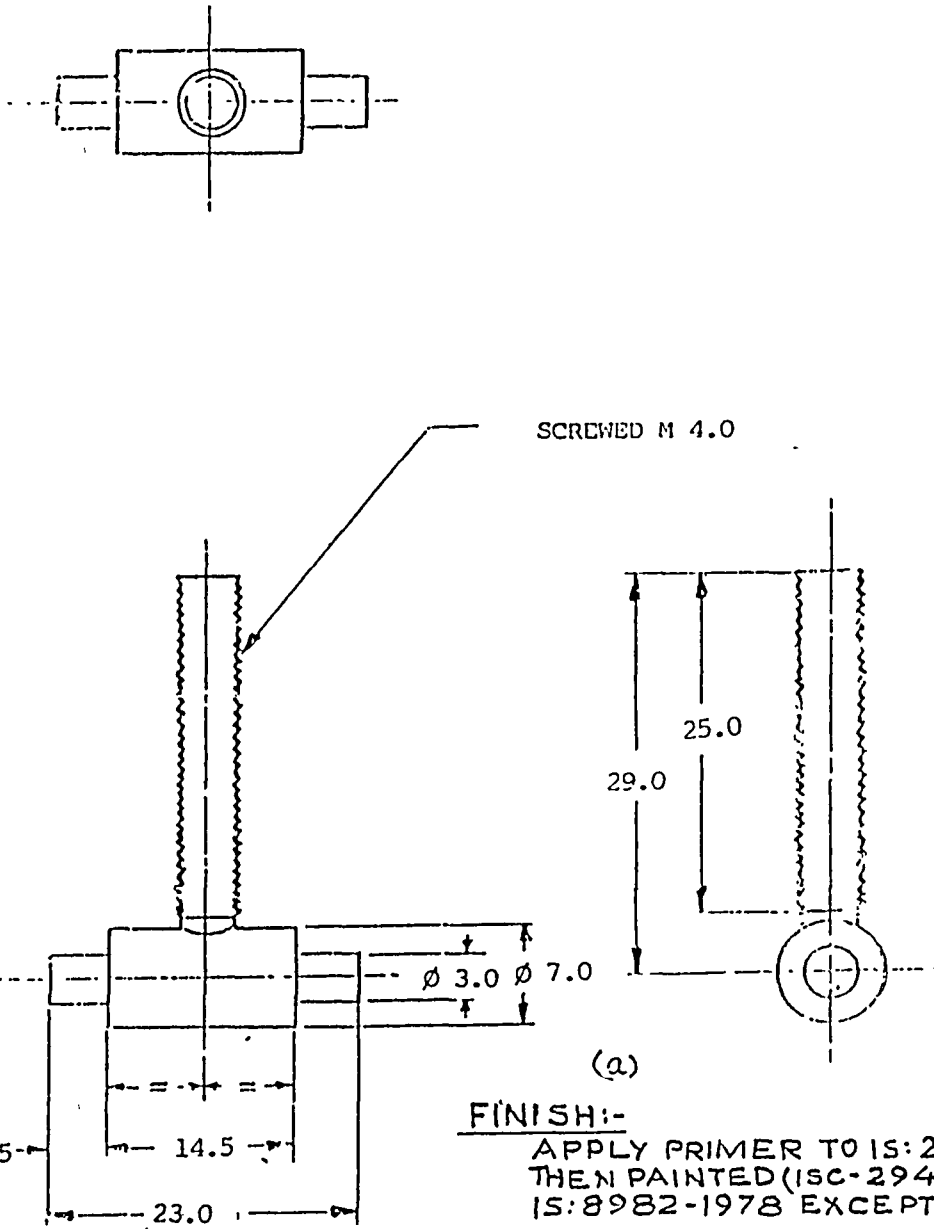
**NOTE-** ALL LETTERS & FIGURES TO BE PHOTO-ETCHED OR PHOTO PRINTED IN WHITE AND BACKGROUND TO BE BLACK

**MATL:-** AL.ALLOY, Gde- 64430, T6, TO IS: 737-2008,  
**FINISH:-** CLEAN

DIMENSIONS ARE IN M/M.  
IMPORTANT DIMENSIONS MARKED THUS ◉  
INFORMATION MARKED THUS † TO BE MARKED ON

		DT.12-10-17	SCALE-1:1
		<u>MATL.</u>	<u>TREAT.</u>
		AS ABOVE	AS ABOVE
		SHEETS-1	SHTS.-1
		<b>DRAWING NO-</b>	
AMENDMENTS.		<b>CWC-250/3</b>	
OFD/DO/002	APPROVED.  (AJAY SINGH) HQS/D.O.	 (LOCHAN MEENA) AWM/Plg.	

FOR EXPLANATION OF DIMENSIONING ETC, SEE 'CQA(I)GUIDE' No. 001-1992.  
THIRD ANGLE PROJECTION. DIMENSIONS ARE IN mm



FINISH:-

APPLY PRIMER TO IS: 2074-1962 AND THEN PAINTED (ISC-294 TO IS: 5-1978) OF IS: 8982-1978 EXCEPT BEARING SURFACES.

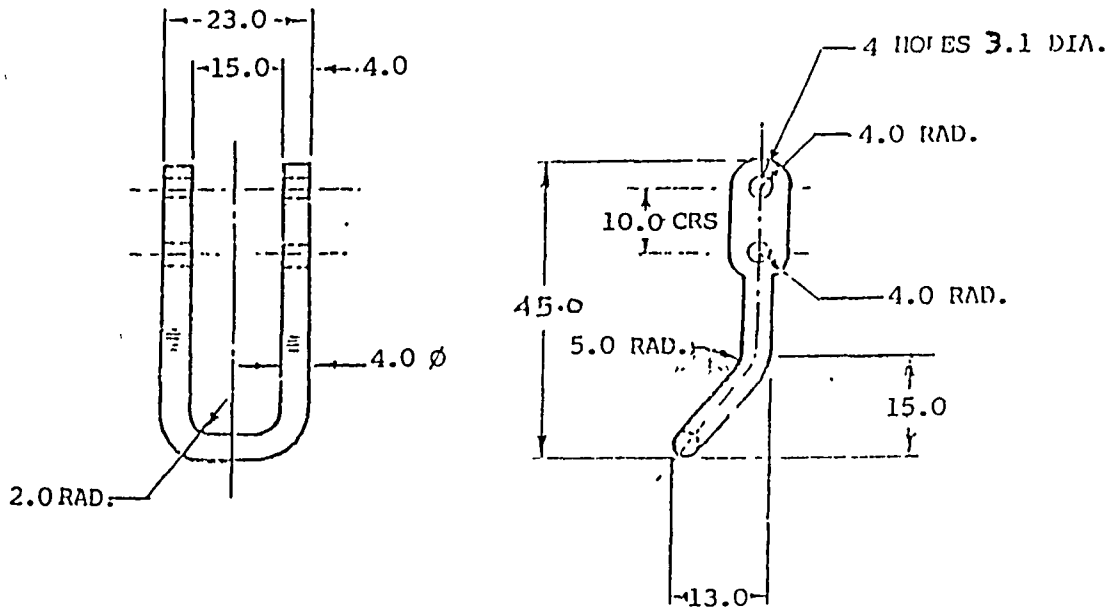
D.C. (I):-0455-I(P), 2002-I, 2091-I, 3165-I, 3777-I, 5563-I, 5585-I, 5761-I, 5792-I.

POLY. NEG. PREPARED AT CQA(I) DEHRA DUN

PREPARED BY: *M. M. Singh* CHECKED BY: *S. K. Singh* DATE: 20.8.93

					DRN	Sdl-	APPROVED
					TCD	Sl-	FOR Sdl-
					CHD	Sdl-	CONTROLLER
					CHD	Sdl-	CQA(I)D. DUN
	(a) D.C.:- 5792-I. MATL & FINISH AMENDED.			5.11.93	USED		DATE:- 5-6-69
	D.C.:- 5761-I. POLY. NEG. PREPARED & NEW COPY SEALED IN REPLACEMENT OF EXISTING ONE.			3.9.93.	ON		
SYMB	AMENDMENTS	CHD	SIG	DATE	ON		
MATL & SPEC	<del>STEEL IS: 1875-1978 IV REVISION STEEL CLASS-4-</del> STEEL CLASS-4 TO IS: 1875-1978.				BASED ON		
FINISH & SPEC	<del>TO BE PAINTED WITH LATEST APPROVED SERVICE COLOR EXCEPT BEARING SURFACES</del> SEE ABOVE.				CAT/PT No.	5340-001918	
TITLE:-	LEVER				DRG No	IRDE - 328/1	
					SCALE	:   SH OF	

FOR EXPLANATION OF DIMENSIONING ETC, SEE 'CQA(I) GUIDE' No. 001-1992  
 THIRD ANGLE PROJECTION. DIMENSIONS ARE IN mm



(a)

FINISH & SPEC:-

APPLY PRIMER TO IS: 2074-1962 AND THEN PAINTED  
 (ISC-294 TO IS: 5-1978) OF IS: 8982-1978 EXCEPT  
 BEARING SURFACES.

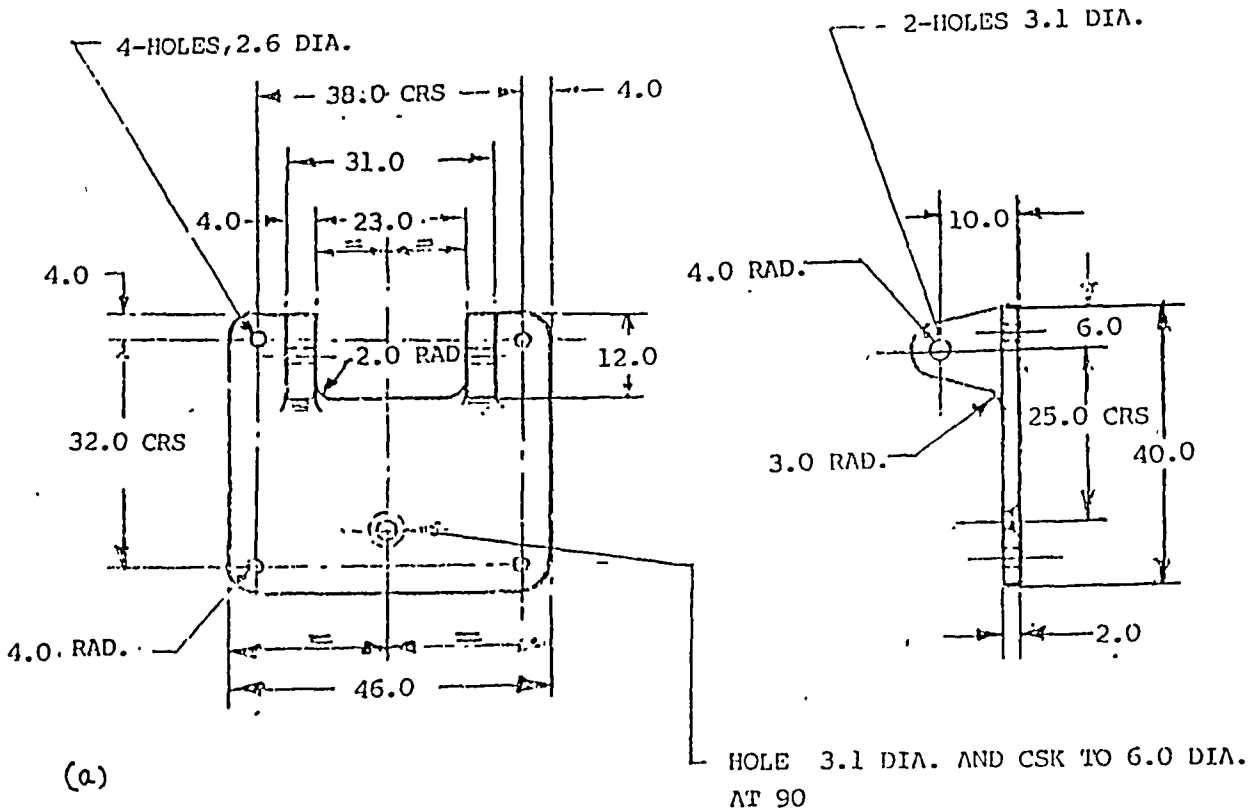
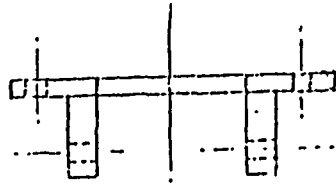
D.C.(I) :- 0455-I(P), 2002-I, 3165-I, 3777-I, 5585-I, 5761-I, 5792-I.  
 POLY NEG. PREPARED AT CQA(I) DEHRA DUN  
 PREPARED BY : *Ammy*  
 CHECKED BY : *S. Singh* DATE: 20.8.93

					DRN	Sdl-	APPROVED
					TCD	Sdl-	FOR Sdl-
					CHD	Sdl-	CONTROLLER'
					CHD	Sdl-	CQA(I) D. DUN
					USED		DATE:- 5.6.69
SYMB	AMENDMENTS	CHD	SIG	DATE	ON		
MATL & SPEC	<del>STEEL IS-1875-1978 TV REVISION</del> STEEL CLASS-4 STEEL CLASS-4 TO IS:1875-1978				BASED ON		
FINISH & SPEC	<del>TO BE PAINTED WITH LATEST APPROVED</del> SEE ABOVE <del>SERVICE COLOUR EXCEPT BEARING SURFACES</del>				CAT/PT No.	5340-001915	
TITLE:-					DRG No	IRDE-328/3	
					SCALE	:	SII OF

(a) D.C. :- 5792-I.  
 MATL. AND FINISH AMENDED.  
 D.C. :- 5761-I. POLY. NEG. PREPARED & NEW COPY  
 SEALED IN REPLACEMENT OF EXISTING ONE.

CHD SIG DATE  
 W W 5.11.93  
 W W 3.9.93

FOR EXPLANATION OF DIMENSIONING ETC, SEE CQA (I) GUIDE No. 001-1992.  
THIRD ANGLE PROJECTION. DIMENSIONS ARE IN mm



**FINISH & SPEC:-**

APPLY PRIMER TO IS: 2074-1962 AND THEN PAINTED (ISC: 294 TO IS: 5-1978) OF IS: 8982-1976 EXCEPT BEARING SURFACES.

D.C. (I) :- 0455-I(P), 2002-I, 2091-I, 3418-I, 3777-I, 5563-I, 5585-I, 5761-I, 5792-I.

POLY. NEG. PREPARED AT CQA (I) DEHRA DUN  
PREPARED BY : *[Signature]*  
CHECKED BY : *[Signature]* DATE: 20.8.93

					DRN	sd/-	APPROVED
					TCD	sd/-	FOR
					CHD	sd/-	CONTROLLER
					CHD	sd/-	CQA (I) D. DUN
					USED		DATE:-
					ON		
					BASED		
					ON		
					CAT/PT	5310-002479	
					DRG		
					No.	IRDE-328/ 4	
					SCALE		SH OF

(a) D.C. 5792-3.  
MATL. AND FINISH AMENDED. *[Signature]* *[Signature]* 5.11.93  
D.C. 5761-I. POLY. NEG. PREPARED A NEW COPY SEALED IN REPLACEMENT OF EXISTING ONE. *[Signature]* *[Signature]* 3.9.93.

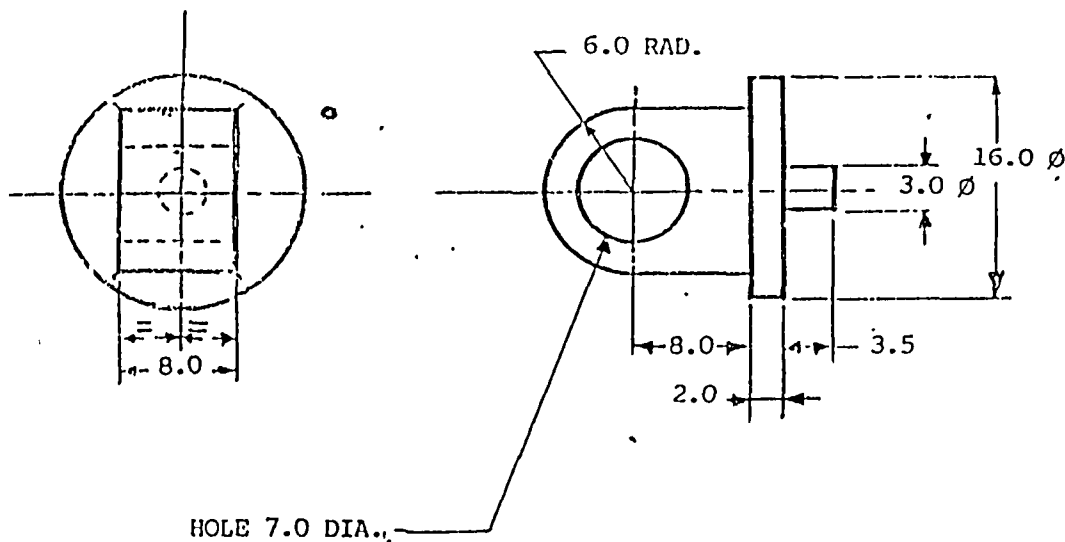
SYMB AMENDMENTS CHD SIG DATE

MATL & SPEC STEEL, IS-2098-1982 CLASS-4 TO IS: 1875-1978 FOR FORGING OR STEEL GDE 280-520 TO IS: 1030-1989 FOR CASTING.

FINISH & SPEC ~~TO BE PAINTED WITH LATEST APPROVED SERVICE COLOUR EXCEPT BEARING SURFACES~~ SEE ABOVE

TITLE:- BRACKET, PLATE

FOR EXPLANATION OF DIMENSIONING ETC, SEE CQA (I) GUIDE No. 001-1992,  
THIRD ANGLE PROJECTION. DIMENSIONS ARE IN mm



(a)

**FINISH & SPEC:-**

APPLY PRIMER TO IS: 2074-1962 AND THEN PAINTED (IS: 294 TO IS: 5-1978) OF IS: 8982-1978 EXCEPT BEARING SURFACES.

D.C. (I): -0455-I(P), 2002-I, 2091-I, 3165-I, 3777-I, 5563-I, 5761-I, 5792-I.

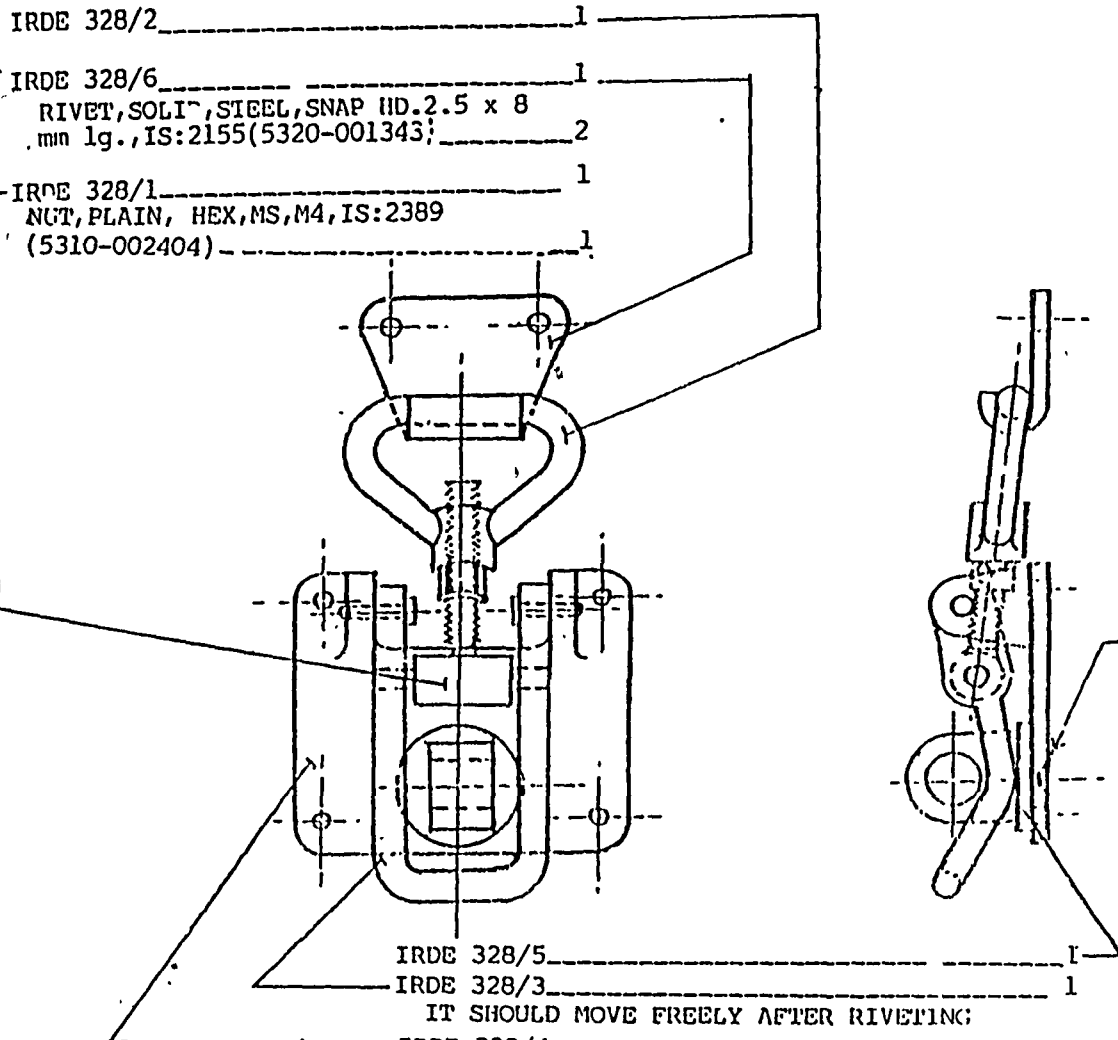
POLY. NEG. PREPARED AT COA (I) DEHRA DUN

PREPARED BY : *S. Singh*  
CHECKED BY : *S. Singh* DATE: .....

					DRN	Sdl	APPROVED
					TCD	Sdl	FOR Sdl
					CHD	Sdl	CONTROLLER
					CHD	Sdl	CQA (I) D. DUN
					USED		DATE: 5.6.69
					ON		
					BASED		
					CAT/PT		5310-001914
					DRG		IRDE-328/5
					SCALE		: SH OF
SYMB	AMENDMENTS			CHD	SIG	DATE	
MATL & SPEC	C-30 TO IS: 1570-1961. STEEL, 3-1570/C-30						
FINISH & SPEC	<del>TO BE PRINTED WITH LATEST APPROVED SERVICE</del> <del>COLOUR EXCEPT BEARING SURFACES.</del> SEE ABOVE.						
TITLE:-	EYE, LOCKING						

(a) D.C. 5792-I.  
MATL. AND FINISH AMENDED. *W* 5.11.93  
D.CI-5761-I POLY. NEG. PREPARED & NEW COPY  
SEALED IN REPLACEMENT OF EXISTING ONE. *W* 3.9.93.

FOR EXPLANATION OF DIMENSIONING ETC, SEE 'CQA(I) GUIDE' No. 001-1992.  
 THIRD ANGLE PROJECTION. DIMENSIONS ARE IN mm



- IRDE 328/2 \_\_\_\_\_ 1
- IRDE 328/6 \_\_\_\_\_ 1
- RIVET, SOLID, STEEL, SNAP HD. 2.5 x 8  
mm lg., IS: 2155 (5320-001343) \_\_\_\_\_ 2
- IRDE 328/1 \_\_\_\_\_ 1
- NUT, PLAIN, HEX, MS, M4, IS: 2389  
(5310-002404) \_\_\_\_\_ 1

- IRDE 328/5 \_\_\_\_\_ 1
- IRDE 328/3 \_\_\_\_\_ 1
- IT SHOULD MOVE FREELY AFTER RIVETING
- IRDE 328/4 \_\_\_\_\_ 1
- RIVET, SOLID, STEEL, FLAT HD., 3x12 mm LG  
IS: 2155 (5320-J01342) \_\_\_\_\_ 2
- RIVET, SOLID, STEEL, SNAP HD., 2.5x8 mm  
LG, IS: 2155 (5320-001343) \_\_\_\_\_ 4

NOTE:-  
 TO BE SECURED TO THE CASE BY  
 MEANS OF WELDING OR RIVETING  
 AS THE CASE MAY BE.  
 LENGTH TO SUIT AS REQUIRED

D.C.:(I):-0630-I(P), 3113-I, 3165-I, 3418-I, 3777-I, 4736-I, 5563-I, 5760-I.  
 POLY-NEG. PREPARED AT CQA(I) DEBRA DUN  
 PREPARED BY : *Amrinder*  
 CHECKED BY : *Subhjit*  
 DATE: 20.8.93

					DRN	Sdl-	APPROVED
					TCD	Sdl-	FOR Sdl-
					CHD	Sdl-	CONTROLLER
					CHD	Sdl-	CQA(I)D. DUN
					USED		DATE:- 7.7.72
					ON		
					BASD		
					ON		
					CAT/PI		5325-00C211
					No.		
					DRG		IRDE-328
					No		
					SCALE		SH OF

D.C.-5760-I. POLY-NEG. PREPARED & NEW COPY  
 SEALED IN REPLACEMENT OF EXISTING ONE.

SYMB AMENDMENTS CHD SIG DATE

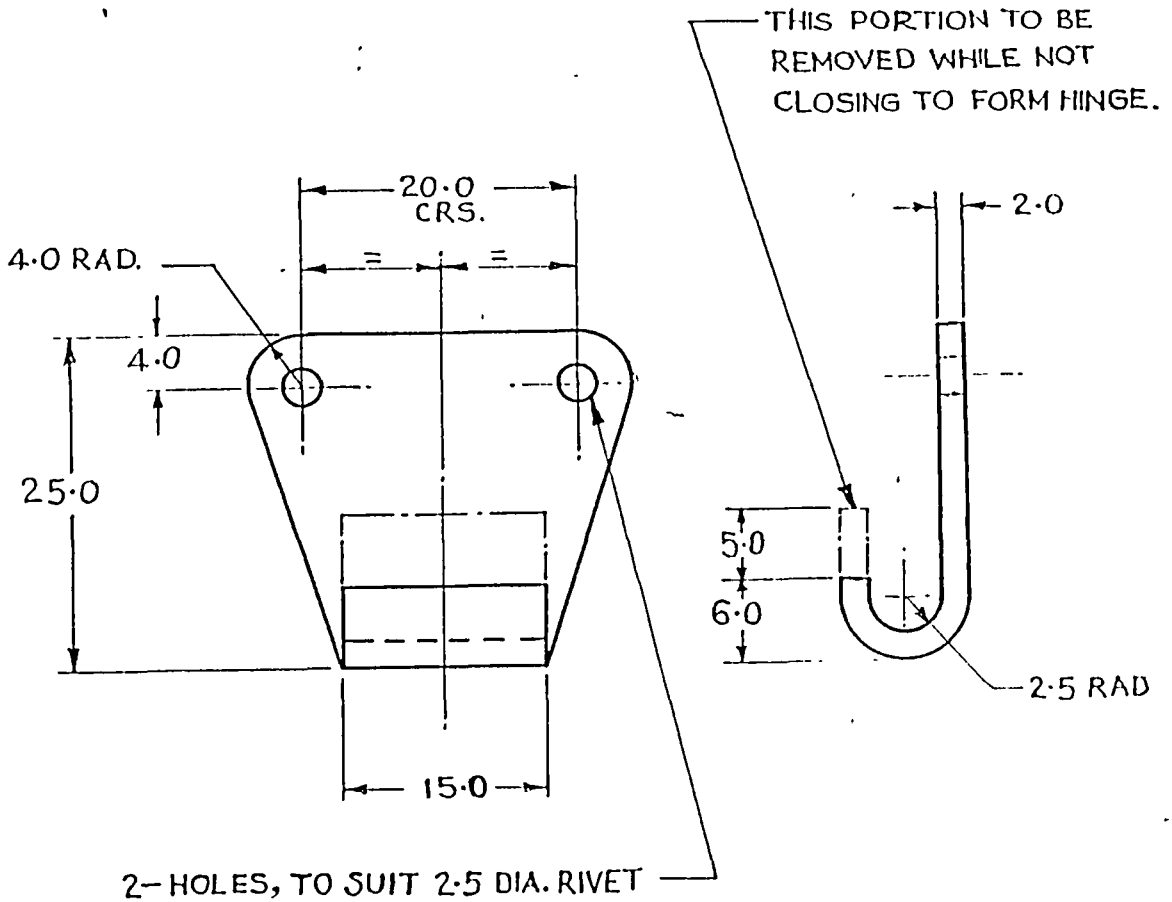
MATL & SPEC SEE DETAILS

FINISH & SPEC SEE DETAILS

TITLE:- FASTENER SET, TURN LOCK

FOR EXPLANATION OF DIMENSIONING ETC., SEE CQA(I) GUIDE No.001-1992  
THIRD ANGLE PROJECTION  
DIMENSIONS ARE IN mm

D.C.(I):-0455-I (P), 2002-I, 2091-I, 3515-I, 5564-I, 5583-I, POLYESTER NEGATIVE PREPARED AT CQA(I) D.SUN  
5773-I, 5839-I.  
PREPARED BY:- *Mamun*  
CHECKED BY:- *Subodh Kishan* DATE:- 7/1/93



(A) D.C.:-5839-I. FINISH AMENDED.	<i>sd/-</i>	<i>sd/-</i>	8.4.94
D.C.5773-I. POLY. NEG. PREPARED & NEW COPY SEALED IN REPLACEMENT OF EXISTING ONE			9.10.93
(B) D.C.(I):-5583-I. MATL. AMENDED.			22.8.92
(B) D.C.(I):-5564-I. NOTE SHEET AMENDED.		<i>sd/-</i>	27.4.92
(C) D.C.(I):-3515-I:- CAT/PT.No. ADDED.	<i>sd/-</i>		20.12.76
D.C.(I):-2091-I:- USE EXTENDED FOR SIGILL BORE AFV 104A & 107A.	<i>sd/-</i>		15.1.71
D.C.(I):-2002-I:- DRG. SEALED.	<i>sd/-</i>		1.4.70
D.C.(I):-0455-I (P):- DRG. PROV. SEALED.	<i>sd/-</i>		11.7.69
AMENDMENTS	SIG.	DATE	
MTRL:- CARBON STEEL SHEET, DEEP DRAWING, IS: 513-1986			

DRAWN: TRACED	APPROVED
<i>sd/-</i>   <i>sd/-</i>	<i>sd/-</i>
CHECKED	FOR DIRECTOR
<i>sd/-</i>   <i>sd/-</i>	IRDE
	DEHRA DUN
SCALE:-2:1	DATE:-29.5.69
DRG. No.	
IRDE 379/9	
CAT/PT. No.	
5340-002424	
SHS	SH

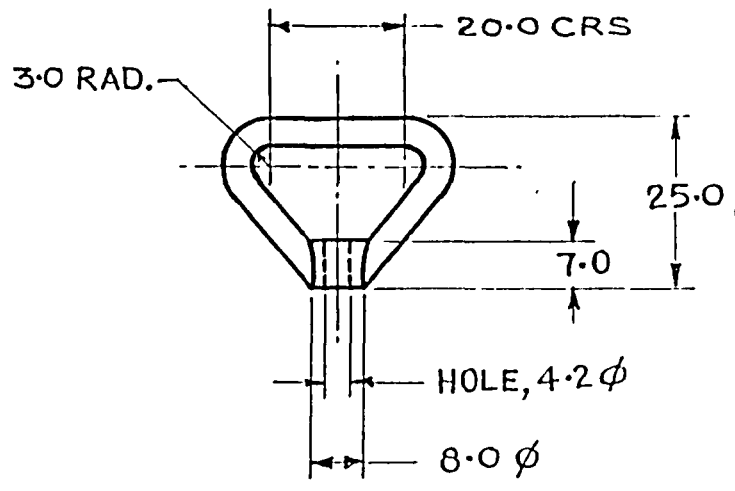
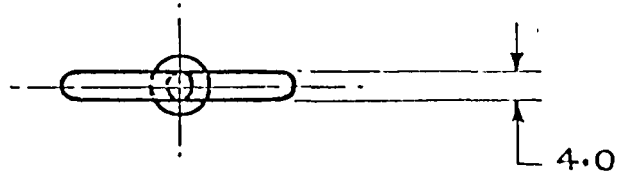
DRG. RETRACED AT CII, DEHRA DUN  
TRACED BY:- *Subodh Kishan*  
CHECKED BY:- *Subodh Kishan*  
DATE:- 11.9.80

FINISH:- (a)  
APPLY PRIMER TO IS:2074-1962 AND THEN PAINTED (ISC 29A TO IS: 5-1978) & IS: 8982-1978 EXCEPT BEARING SURFACES.

**HOOK**

FOR EXPLANATION OF DIMENSIONING ETC., SEE CQA(I)GUIDE No.001-1992. ,  
 THIRD ANGLE PROJECTION DIMENSIONS ARE IN mm

DRG. RETRACED AT CII, DEHRA DUN  
 TRACED BY:- *Abhinav*  
 CHD. BY:- *Sham*  
 DATE:- 10.9.80  
 D.C.(I):-0455-I(P), 2091-I, 3515-I, 5564-I, 5839-I, 5773-I, 5839-I.  
 POLYESTER NEGATIVE PREPARED AT CQA(I) D DUN  
 PREPARED BY:- *Sham*  
 CHECKED BY:- *Sham* DATE:- 7/11/73



(2) D.C.:- 5839-I. FINISH AMENDED.	<i>ho</i>	<i>se</i>	8.4.94
D.C. 5773-I. POLY. NEG. PREP. & NEW COPY SEALED IN REPLACEMENT OF EXISTING ONE			9.10.93
(3) D.C.(I):- 5583-I. MATL. SPECN. AMENDED.	1		22.8.92
(5) D.C.(I):- 5564-I. NOTE SHEET AMENDED.	1	<i>WJ</i>	27.4.92
(a) D.C.(I):- 3515-I CAT/PT. No. ADDED		<i>sd/-</i>	20.12.76
D.C.(I):- 2091-I:- USE EXTENDED FOR SIGHT BORE AFV 104 A & 107A		<i>sd/-</i>	15.1.71
D.C.(I):- 2002-I:- DRG. SEALED		<i>sd/-</i>	1.4.70
D.C.(I):- 0455-I (P):- DRG. PROV. SEALED		<i>sd/-</i>	14.7.69
AMENDMENTS	SIG.	DATE	
MATL:- STEEL, IS:1875-1978 IV REVISION - (c) STEEL CLASS-4.			
APPLY PRIMER TO IS 2074-1962 AND THEN PAINTED (ISC 294 TO IS: 5-1978) OF IS: 8982-1978 EXCEPT BEARING SURFACES.			

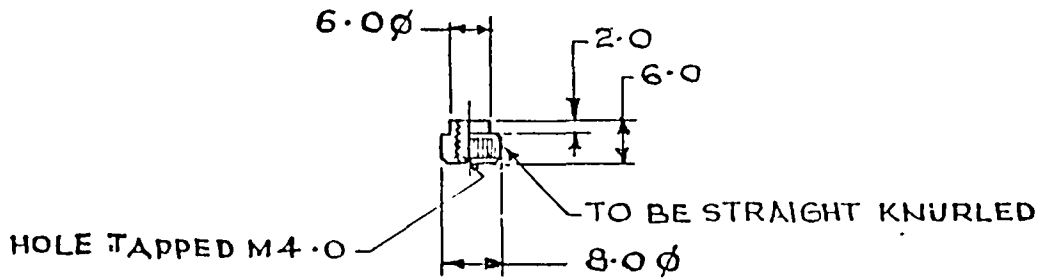
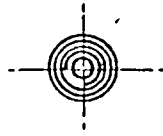
DRAWN TRACED	APPROVED
<i>sd/-</i>   <i>sd/-</i>	<i>sd/-</i>
CHECKED	FOR DIRECTOR
<i>sd/-</i>	IRDE
	DEHRA DUN
SCALE:- 1:1	DATE:- 29.5.69
DRG. No.	
IRDE 379/15	
CAT/ PART No.	(e)
5340-002427	
SHS.	SH.

LOOP

POLYESTER NEGATIVE PREPARED AT CQA(I) D. DUN  
PREPARED BY: -  
CHECKED BY: -

D.C.(I):- 0455-I(P), 2002-I, 2091-I, 3515-I, 5564-I, 5583-I, 5773-I, 5839-I.  
DATE: - 7/1X/93

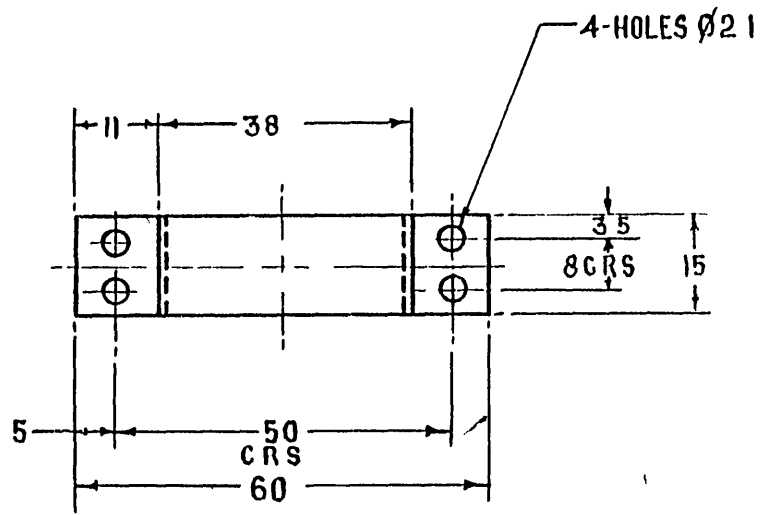
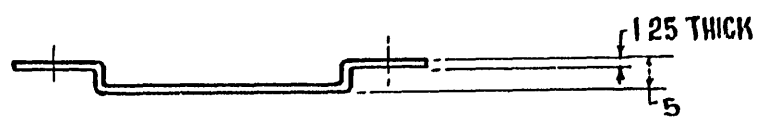
TRACED AT CII DEHRADUN  
TRACED BY: -  
CHECKED BY: -  
DATE: 1.9.80



(a) D.C.:- 5839-I. FINISH AMENDED.	<i>[Signature]</i>	8.4.94	DRAWN TRACED APPROVED
D.C. 5773-I. POLY. NEG. PREP & NEW COPY SEALED IN REPLACEMENT OF EXISTING ONE.	<i>[Signature]</i>	9.10.93	
(a) D.C.(I):- 5583-I. MATL. AMENDED.	<i>[Signature]</i>	22.8.92	sd/-   sd/-   sd/- CHECKED FOR DIRECTOR IRDE DEHRADUN
(b) D.C.(I):- 5564-I. NOTE SHEET AMENDED.	<i>[Signature]</i>	27.4.92	
(a) E.C (I):- 3515-I. NO. AMENDED & CAT./PT. No. ADDED.	sd/-	2012.76	SCALE:- 1/1 DATE: 29.5.69
D.C.(I):- 2091-I:- USE EXTENDED FOR SIGHT BORE AFV. 104A & 107A.	sd/-	15.1.71	
D.C.(I):- 2002-I:- DRG. SEALED.	sd/-	1.4.70	DRG No. IRDE 379/16
D.C.(I):- 0455-I(P):- DRG. PROV. SEALED.	sd/-	1.4.76	
AMENDMENTS			CAT/PART No. (a) 5310-003244
MATL:- STEEL ROD, IS: 17283-1974 CHEMICAL - COMPOSITION 30 C 8 05 IS: 1570 PT. II 1979			
APPLY PRIMER TO IS: 2074-1962 AND THEN PAINTED (ISC 294 TO IS: 5-1978) OF IS: 8982-1978 EXCEPT BEARING SURFACES.			SHEETS SHEET
NUT, PLAIN, KNURLED (a)			

POLYESTER NEGATIVE PREPARED AT CQA(I) D DUN  
 PREPARED BY *[Signature]*  
 CHECKED BY *[Signature]* DATE - 7 (X) 93

FOR EXPLANATION OF DIMENSIONING Etc., SEE CQA(I) GUIDE No 001-1992  
 THIRD-ANGLE PROJECTION DIMENSIONS ARE IN MILLIMETRES

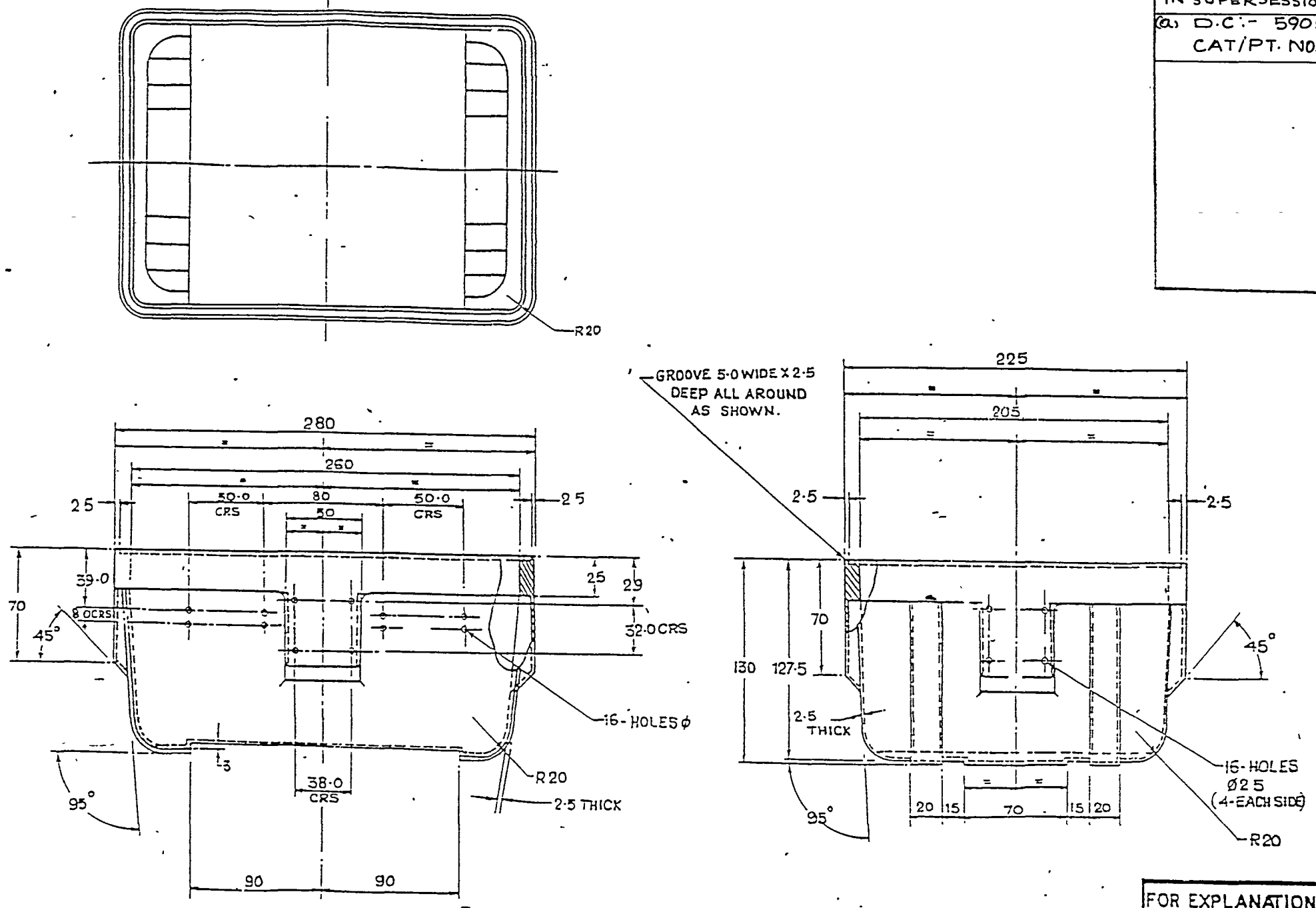


	(C) D C - 5903 I NOM AMENDED & CAT/PJ.No. ADDED.	<i>[Signature]</i>	<i>[Signature]</i>	23/11/94				
	(L) D C I - 5839 - I FINISH AMENDED	<i>[Signature]</i>	<i>[Signature]</i>	28/9/94	DRN	<i>[Signature]</i>	APPROVED <i>[Signature]</i> for DIRECTOR	
	D C 5774 - I POLY NEG PREP & NEW COPY SEALED IN REPLACEMENT OF EXISTING ONE	<i>[Signature]</i>	<i>[Signature]</i>	9/10/93	TRCD	<i>[Signature]</i>	IRDE Dehra Dun	
	(Q) D C (I) - 5584 - I MATL SPECN AMENDED	<i>[Signature]</i>	<i>[Signature]</i>	22/8/92	CHKD	<i>[Signature]</i>	Date 18 80	
	D C (I) - 4615 - J DRG SEALED	<i>[Signature]</i>	<i>[Signature]</i>	25/8/92	CHKD	<i>[Signature]</i>		
	D C (I) - 1063 - I (P) DRG PROV SEALED	<i>[Signature]</i>	<i>[Signature]</i>	14/12/81	USED 011			
	SYM AMENDMENTS	CHKD	SIG	DATE	BASED ON			
(a)	MATL & SPECI	MS, IS 1079-60-10 - 1988, GRADE 'O'						
(b)	FINISH	APPLY PRIMERTO IS 2074-1962 AND THEN PAINTED (ISC 294 TO IS 5-1978) OF IS 8982-1978 EXCEPT BEARING SURFACES						CAT PT No 5340-014216 (c)
	TITLE	(c) CLIP RETAINING						DRG No IRDE1613/8
					SCALE	1:1	SHT. OF	

D C (I) - 663 - I (P), 4615 - I, 5584 - I 5774 - I, 5839 - I, 5903 - I.

REDUCED DRG. PREPARED AT COA (T) DHRA DUN  
 PREPARED BY : *K.S. Dutt*  
 CHECKED BY : *Sh. S. S. S.*  
 DATE : 15.9.92  
 I.C.(1) :- 5402-I, 5592-I, 5905-I,

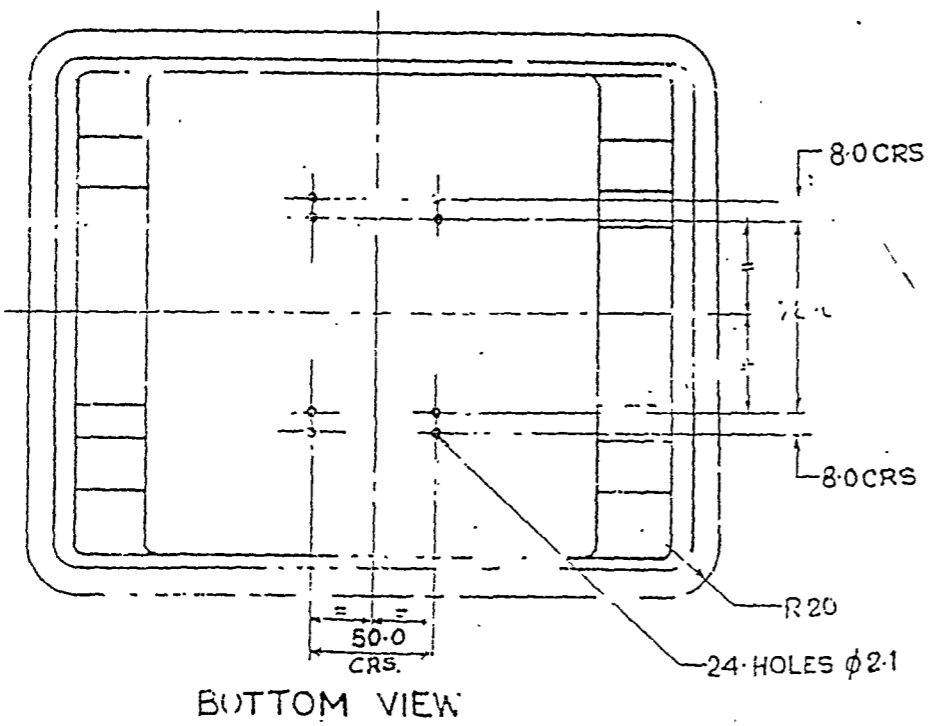
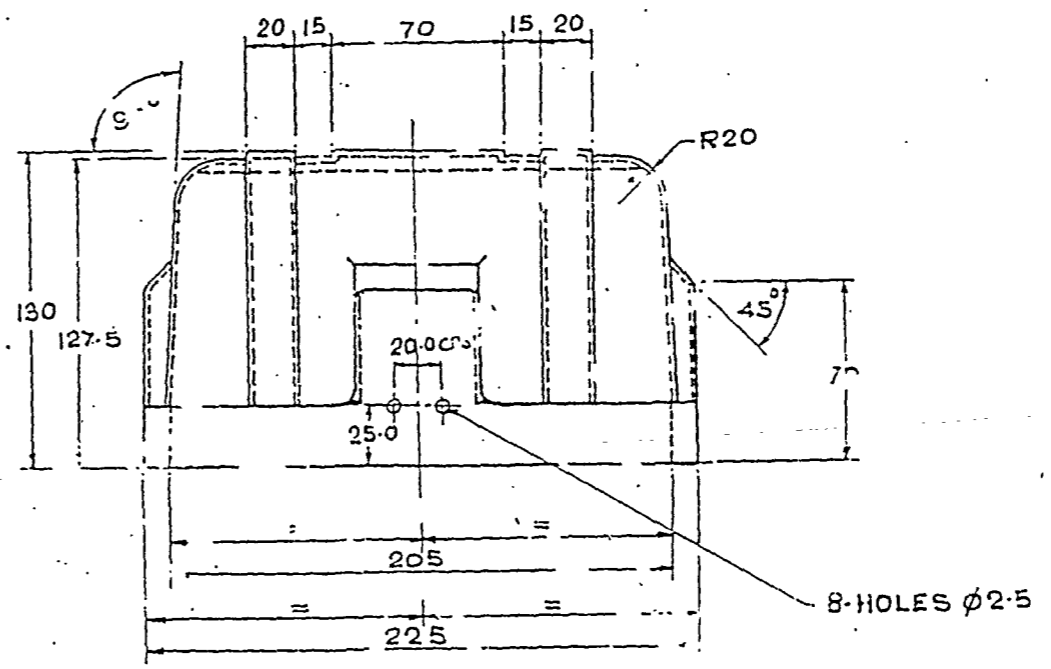
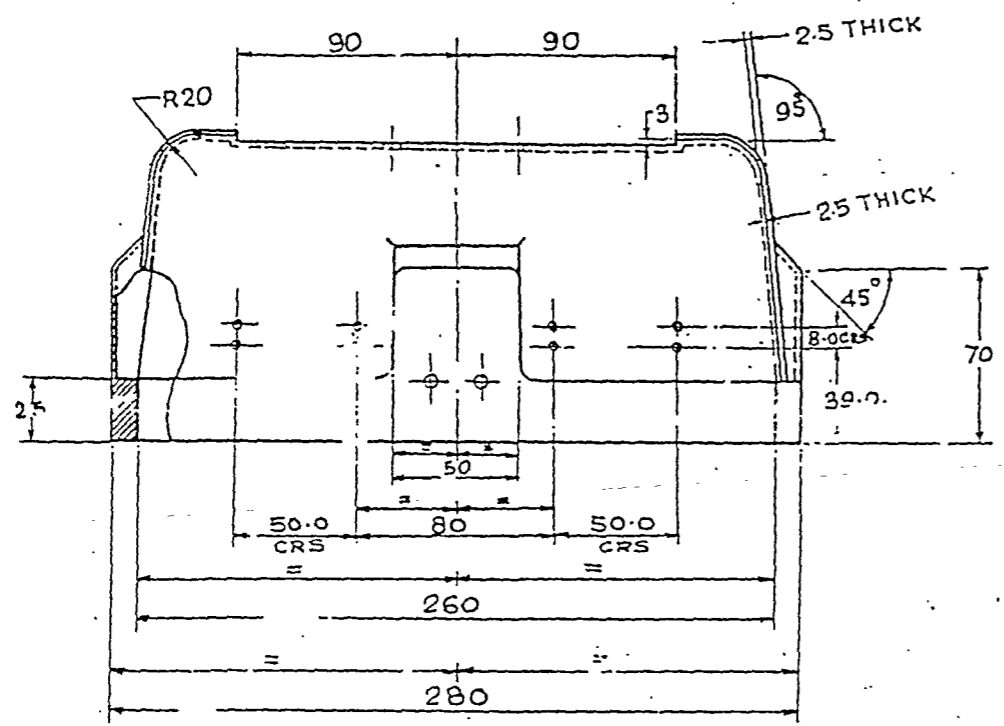
AMENDMENTS	CHD	SIG	DATE
D.C(1) :- 5592-I. UPDATED DRG. SEALED IN SUPERSESSION OF EXISTING ONE.	<i>[Signature]</i>	<i>[Signature]</i>	28.9.92
(a) D.C :- 5905-I, CAT/PT. NOS. ADDED	<i>[Signature]</i>	<i>[Signature]</i>	11.25.94



TITLE:-

**BOX**

FOR EXPLANATION OF DIMENSIONING ETC., SEE COA (1). GUIDE NO 001-1992 THIRD ANGLE PROJECTION DIMENSIONS ARE IN MM	DRN	APPROVED
	TCD	FOR <i>[Signature]</i> CONTROLLER
	CHD	COA (1) DUN
MATERIAL & SPEC:- FIBRE GLASS REINFORCED PLASTIC (BEST COMMERCIAL QUALITY)	USED ON	
	BASED ON	
	CAT/PT No.	8115-000756
FINISH & SPEC:- O.G. COLOUR WITH SMOOTH FINISH.	DRG No.	IRDE-2030/1
	SCALE	1 SH OF



BOTTOM VIEW

DC(I):-5402-I, 5592-I, 5905-I

REDUCED DRG. PREPARED AT CQA (I) SUPRA CON  
PREPARED BY : S.MANDR.  
CHECKED BY : *[Signature]* DATE : 15.9.92

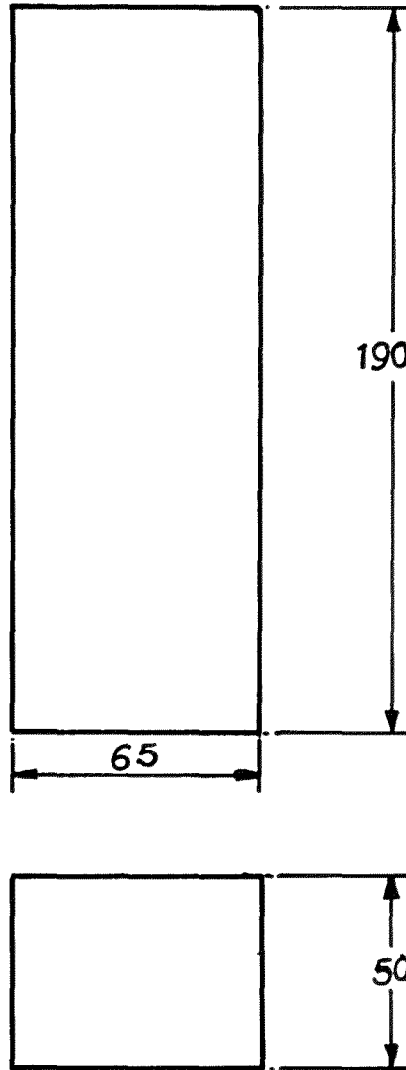
			FOR EXPLANATION OF DIMENSIONING ETC., SEE CQA(I) GUIDE No 001 1992 THIRD ANGLE PROJECTION DIMENSIONS ARE IN mm	DAN	APPROVED
				TCD	FOR
				CHD	DATE
				CHD	DATE
		(a) D.C.I:- 5905-I, NOMS. AMENDED & CAT/PT.NOS ADDED.	MATL & SPEC:- FIBRE GLASS REINFORCED PLASTIC (BEST COMMERCIAL QUALITY)	USFD	
		D.C(I):-5592-I. UPDATED DRG SEALED IN SUPERSESSION OF EXISTING ONE.		ON	
SYMB	AMENDMENTS			BASED ON	
				CAT/PT No	5340-014401 (a)
			FINISH & SPEC:- O.G. COLOUR WITH SMOOTH FINISH	DRS No	IRDE-2030/2
				DATE	
					OF

TITLE:-

LID.

(a)

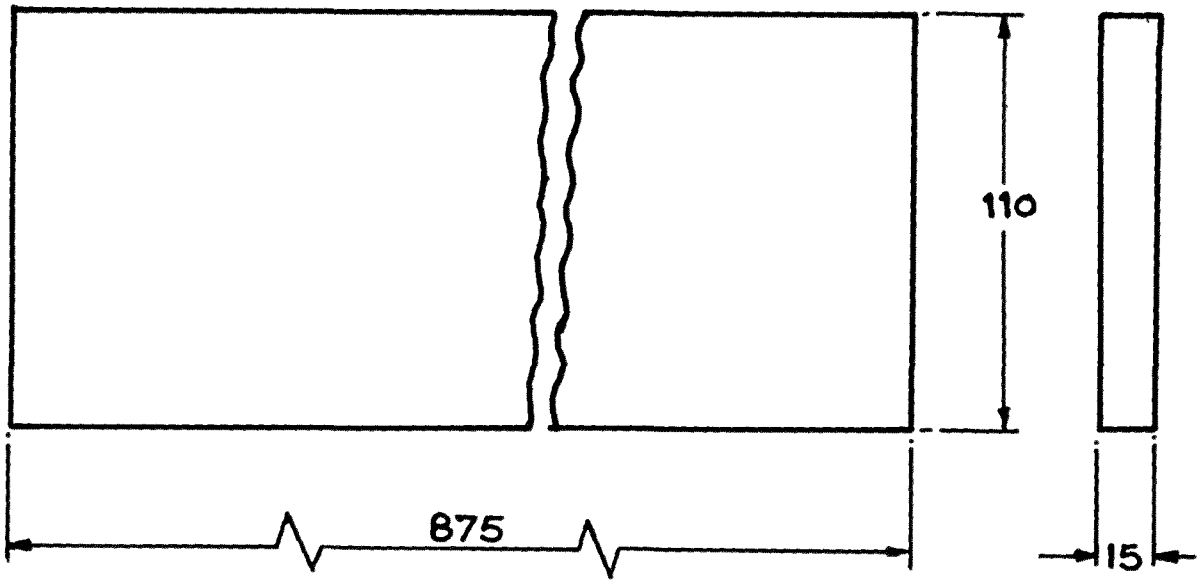
FOR EXPLANATION OF DIMENSIONING ETC, SEE CGA(B) GUIDE No.001-1992  
 THIRD ANGLE PROJECTION DIMENSIONS ARE IN MILLIMETRES.



D.C.(0):-5402-I, 5527-I, 6151-I, 6151-I, 6151-I, 6568-I, 6767-I.

	(d) D.C.:-6767-I. MATL. SPECN. AMENDED.	<i>DRN</i>	<i>W</i>	30.8.05	DRN	<i>W</i>	APPROVED <i>W</i> for DIRECTOR IRDE, Davao Dun
	(c) D.C.:-6568-I. MATL. SPECN. AMENDED.	<i>TRCD</i>	<i>W</i>	24.10.02	TRCD	<i>W</i>	
	(b) D.C.:-6151-I. NOM. AMENDED & CAT/PART No. ADDED.	<i>CHKD</i>	<i>W</i>	9.9.96	CHKD	<i>W</i>	
	(a) D.C.(1):-5527-I MATERIAL AMENDED	<i>CHKD</i>	<i>W</i>	13.12.91	CHKD	<i>W</i>	Date: 26.6.89
	D.C.(1):-5402-I:- DRG. SEALED.	<i>CHKD</i>	<i>W</i>	18.8.90			
SYM	AMENDMENTS	CHKD	SIG	DATE			
MATL & SPECN	(d) EXPANDED POLYTHYLENE FOAM (DENSITY 0.09 + 0.01g/cm <sup>3</sup> BLACK/GREY) (c)				CAT PT. No	5365-010679 (b)	
FINISH	CLEAN				DRG. No.	IRDE 2030/6	
TITLE (b)	SPACER, PLATE				SCALE	1:2	SH - OF

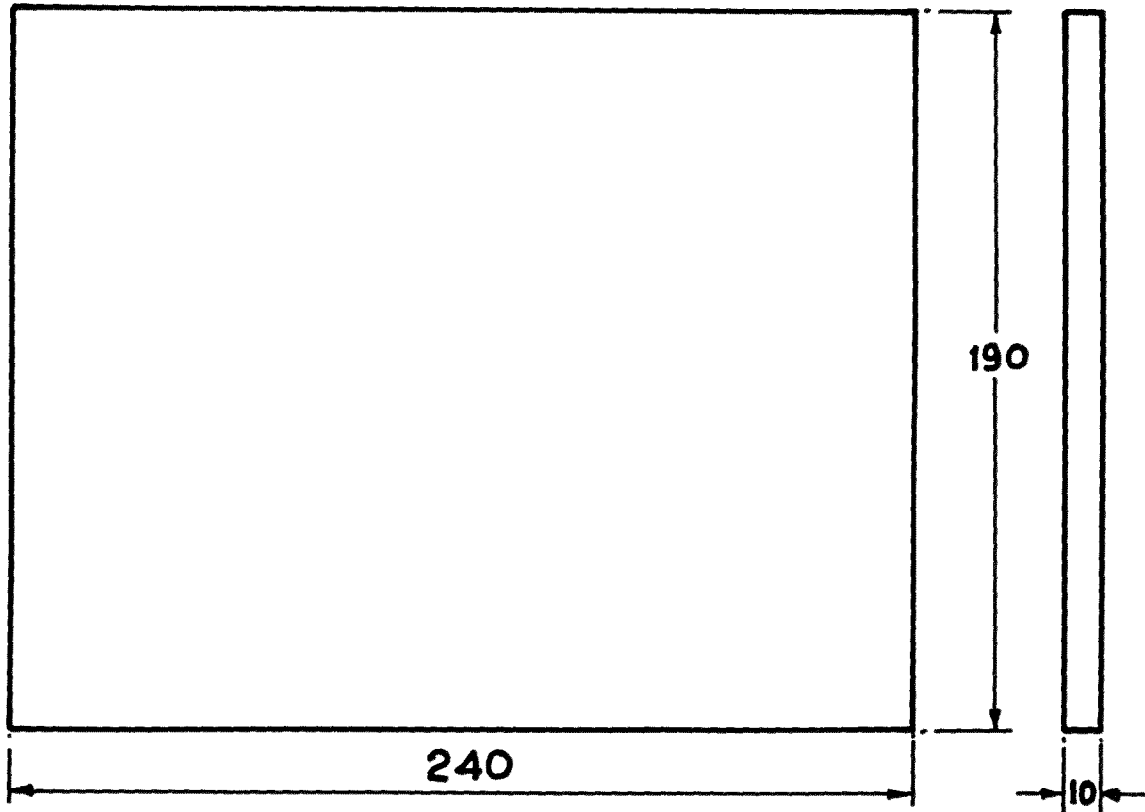
FOR EXPLANATION OF DIMENSIONING ETC, SEE CQAC(I) GUIDE No 001-1992  
 THIRD ANGLE PROJECTION DIMENSIONS ARE IN MILLIMETRES.



D.C.(I):-5402-I, 5527-I, 6151-I, 6568-I, 6767-I.

	(d) D.C.:-6767-I. MATL. SPECN. AMENDED	<i>anj</i>	<i>W</i>	30-8-05	DRN	<i>anj</i>	APPROVED <i>[Signature]</i> for DIRECTOR IRDE, Dehra Dun Date: 26.6.89
	(c) D.C.:-6568-I. MATL. SPECN. AMENDED	<i>anj</i>	<i>W</i>	24-10-02	TRCD	<i>anj</i>	
	(b) D.C.:-6151-I. NOM. AMENDED & CAT/PART No. ADDED.	<i>anj</i>	<i>W</i>	9.9.96	CHKD	<i>anj</i>	
	(a) D.C. (I):- 5527-I MATERIAL AMENDED	<i>anj</i>	<i>W</i>	13-12-91	CHKD	<i>anj</i>	
	D.C.(I):-5402-I:- DRG. SEALED.	<i>anj</i>	<i>W</i>	18.8.90			
SYM	AMENDMENTS	CHKD	SIG	DATE			
(d) (a) MATL & SPECN	EXPANDED POLYTHELENE FOAM (DENSITY 0.09 ± 0.01g/cm <sup>3</sup> BLACK/GREY) (c)				CAT PT. No	5365-010680 (b)	
FINISH	CLEAN				DRG. No	IRDE 2030/7	
TITLE (b)	SPACER, PLATE				SCALE	1:2	SH - OF

FOR EXPLANATION OF DIMENSIONING Etc, SEE CGA(1) GUIDE No 001-1992  
 THIRD ANGLE PROJECTION DIMENSIONS ARE IN MILLIMETRES.

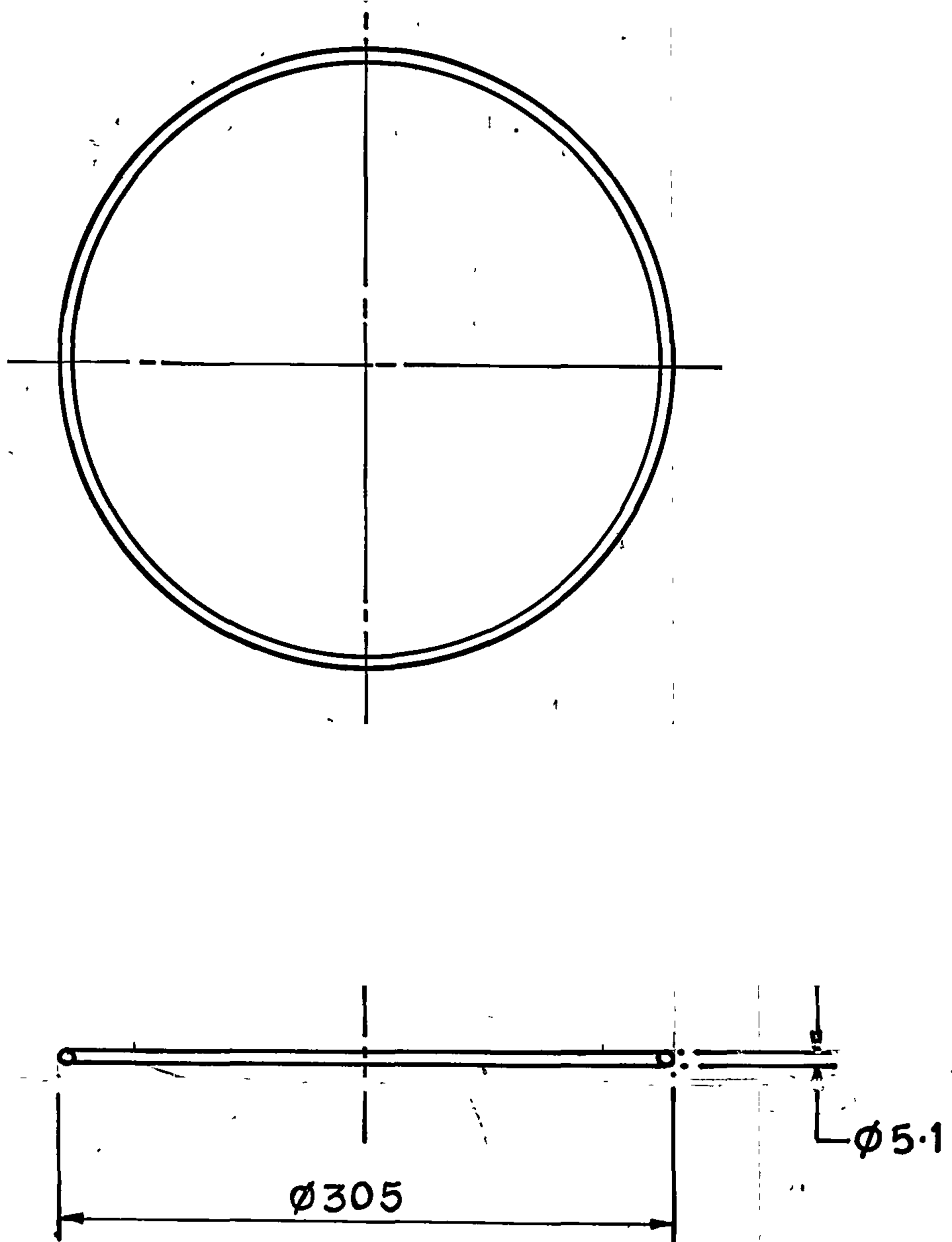


D.C.(1):-5402-I, 5527-I, 6151-I, 6568-I, 6767-I.

	(d) D.C.: 6767-I. MATL. SPECN. AMENDED.	<i>dis</i>	<i>W</i>	30.8.05	DRN	<i>RKumar</i>	APPROVED <i>[Signature]</i> for DIRECTOR IRDE, Dehra Dun Date 26.6.89
	(c) D.C.: 6568-I. MATL. SPECN. AMENDED.	<i>dis</i>	<i>W</i>	24.10.07	TRCO	<i>BKumar</i>	
	(b) D.C.: -6151-I. NOM. AMENDED & CAT/PART No. ADDED	<i>dis</i>	<i>W</i>	9.9.96	CHKD	<i>[Signature]</i>	
	(a) D.C. (1) :- 5527-I MATERIAL AMENDED	<i>dis</i>	<i>W</i>	13.12.91	CHKD	<i>[Signature]</i>	
	D.C.(1):-5402-I:- DRG. SEALED.	<i>dis</i>	<i>W</i>	18.8.90			
SYM	AMENDMENTS	CHKD	SIG	DATE			
MATL & SPECN	EXPANDED POLYTHELENE FOAM (DENSITY 0.09 + 0.01g/cm <sup>3</sup> BLACK/GREY.)				CAT PT. No	5365-010681	(b)
FINISH	CLEAN				DRG. NO.	IRDE2030/8	
TITLE	(b) SPACER, PLATE				SCALE	1:2 SH - OF	

(d) (c)  
(a)

FOR EXPLANATION OF DIMENSIONING ETC. SEE CQA(I) GUIDE No. 001-1992  
 THIRD ANGLE PROJECTION DIMENSIONS ARE IN MILLIMETRES.



D.C.(I):-5402-I, 5905-I, 6241-I, 6573-I.

					DRN	BKumar	APPROVED
	(c) D.C.:-6573-I. IS:11149-1984 ADDED IN MATL. & SPEC. COLUMN.	<i>Sub</i>	<i>pl</i>	26.11.02	TRCD	BKumar	<i>[Signature]</i>
	(b) D.C.:-6241-I. NOM. & CAT/PT. No. AMENDED.	<i>ke</i>	<i>pl</i>	24.12.97	CHKD	<i>[Signature]</i>	for DIRECTOR IRDE, Dabra Dun
	(a) D.C.:-5905-I, NOMS. AMENDED & CAT/PT. NOS. ADDED.	<i>ind</i>	<i>sc</i>	25.11.94	CHKD	<i>[Signature]</i>	Date:-20.7.90
	D.C.(I):-5402-I. DRG. SEALED.	<i>Frath</i>	<i>pl</i>	18.8.90			
SYM	AMENDMENTS	CHKD	SIG	DATE			
MATL & SPECN	SYNTHETIC RUBBER NITRILE VARIETY, (c) IRHD. 51-60, IS:11149-1984.				CAT PT. No	5330-023263 (b) (c)	
FINISH	CLEAN				DRG. No.	IRDE 2030/9	
TITLE (a)	SEAL, RUBBER ROUND SECTION (b)				SCALE	1:5	SH - OF