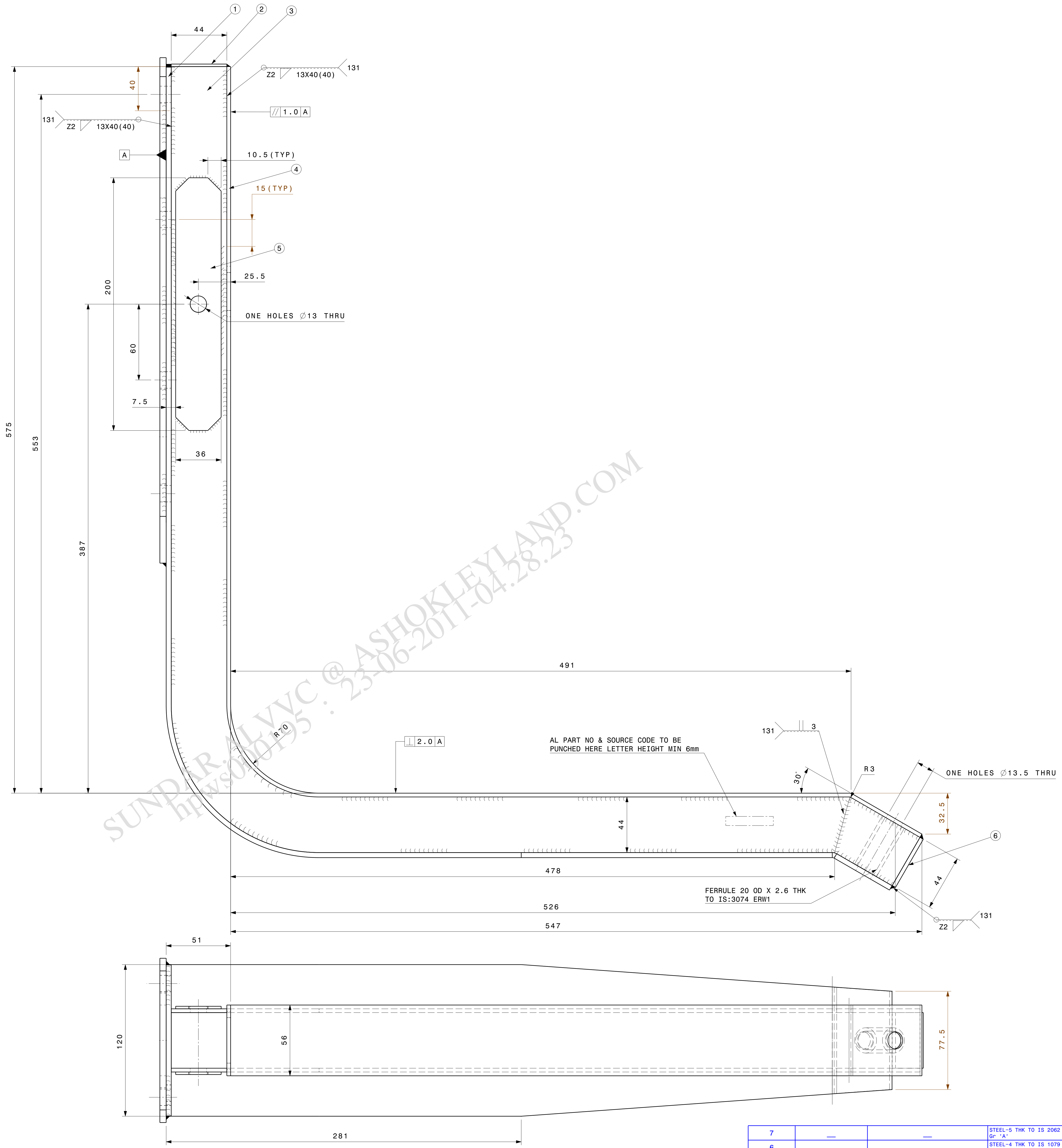
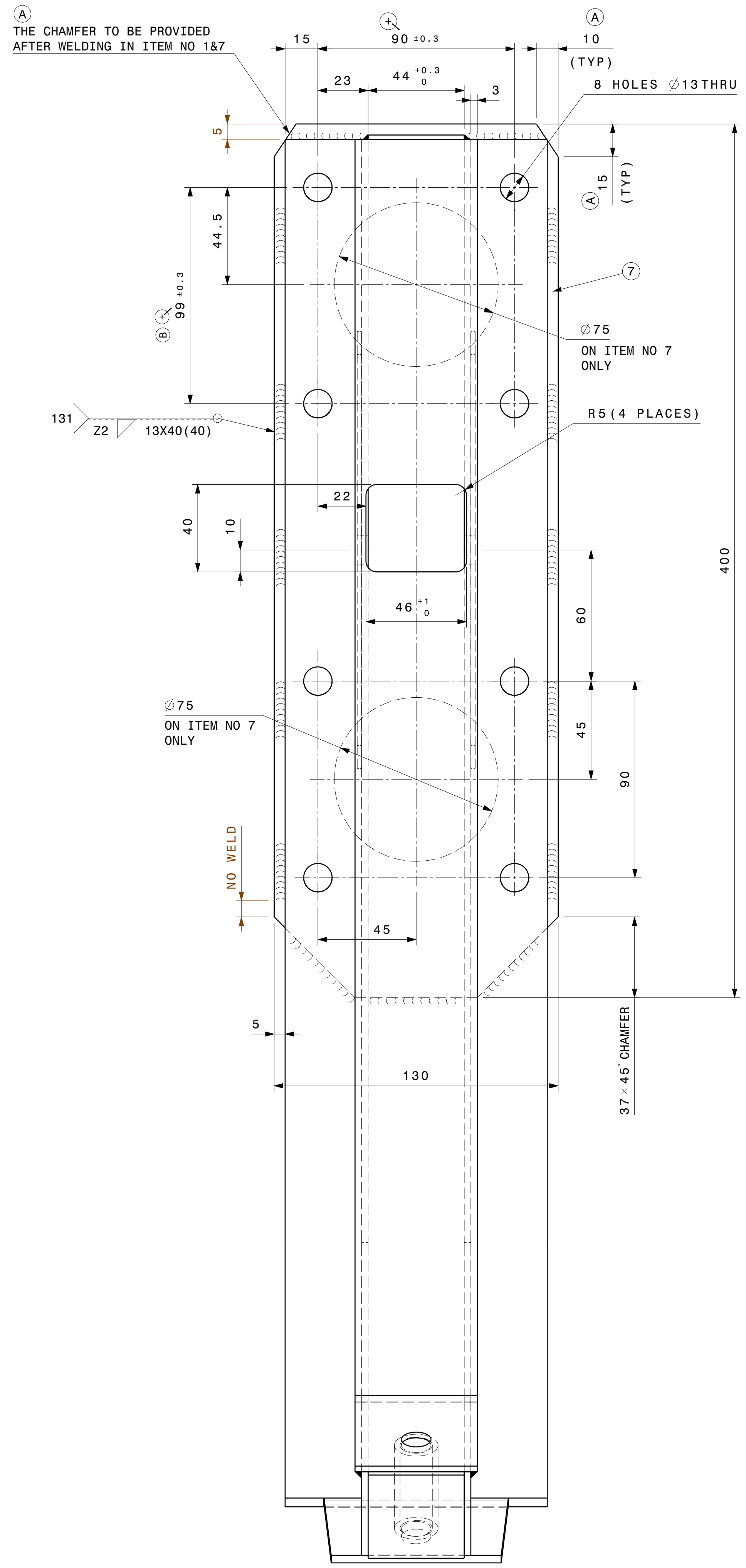




ALTERATIONS		ER-DIN DATE	APPROVED	STATUS
CHAMFER ADDED DIN: 023077	RP/SN	30/03/06	—	A
DIM 99.0.3 WAS 89.0.3 DIN: 023215	AA/SN	06/05/06	—	B
SL.NO 385 QTY 2NOS WAS QTY1NOS	EAK/SN	10/09/07	—	B.1



SUNDARALVVC @ ASHOKLEYLAND.COM
 HPW:040125 : 23-06-2011-04.28.23

AL PLM VAULT
 REVISION: B.1 DATE: 31/2/2010 STATUS: RELEASE
 STAGE: III ER-DIN NO: ER-DIN-0006139 DATE: 31/2/2010
 ALTERED BY: asbokkumar.alvvc CHECKED BY: rchandraalvvc
 MED APPROVAL: sureshp.alvvc APPROVED BY: sngarajan.alvvc

DIGITALLY SIGNED - PHYSICAL SIGNATURE NOT REQUIRED

DRAWN/ DATE	CHECKED/ DATE	MED. APPROVAL/ DATE	APPROVED/ DATE	STDS APP/ DATE
DR 06/05/02	SN 06/05/02	SURESH 05/08/03	MRK 10/05/02	

MATERIAL REFER DRAWING
 HEAT TREATMENT

REMARKS
 STALLION MARK IV
 DESCRIPTION
 BRACKET - FUEL TANK BRACKET

PART NO.	X 7 1 8 4 6 1 0	B.1
SHEET NO	1	OF 1
AO		

SL. No.	PART NO.	DESCRIPTION	MATERIAL	QTY.
7	—	—	STEEL-5 THK TO IS 2062 Gr 'A'	1
6	—	—	STEEL-4 THK TO IS 1079 Gr 'D'	1
5	—	—	STEEL-2 THK TO IS 513 Gr 'D'	2
4	—	—	STEEL-3 THK TO IS 1079 Gr 'D'	1
3	—	—	STEEL-3 THK TO IS 1079 Gr 'D'	2
2	—	—	STEEL-2 THK TO IS 513 Gr 'D'	1
1	—	—	STEEL-4 THK TO IS 1079 Gr 'D'	1

BILL OF MATERIALS			
APPEARANCE ITEM	ER-DIN	DATE	
YES	NO	021081	09/02/05
FINISHED WEIGHT (APPROX)	REF. PT. NO.	X7114910	
—	S/A. PT. NO.	—	
SCALE	SUPERSEDES	—	
NTS	SPEC. NO.	ALOT101	

Q-CRITICAL Q-SAFETY Q-IMPORTANT. THIS DRG. CONTAINS SAFETY CHARACTERISTICS UNLESS OTHERWISE SPECIFIED

TOLERANCES REFER IS:2102 ; MEDIUM FOR MACHINING AND COARSE FOR FABRICATION

SURFACE PROTECTION REFER IS:2102 ; MEDIUM FOR MACHINING AND COARSE FOR FABRICATION

SURFACE FINISH AS PER IS:3073 (CLA VALUE)

METRIC SCREW THREADS SHALL CONFORM TO THE LIMITS AND TOLERANCES SPECIFIED IN THE CURRENT IS:4216 CLASS 6g EXTERNAL OR 6h INTERNAL.

SHARP EDGES TO BE REMOVED DIMENSIONS ARE IN MM DO NOT SCALE DRAWING

SPECIAL INSTRUCTIONS/NOTE:

PAINTING NOTE:
 1) TO BE PHOSPHATED AS PER CLASS-C (LIGHT WEIGHT) IS 3618
 2) TO BE APPLIED WITH ZINC PHOSPHATE GREY PRIMER AS PER ALPS 04
 3) TO BE PAINTED WITH ENAMEL, SCAMIC GREEN CONFORM TO SHADE NO:294 IS:5
 4) (REF DRG NO: X9715000)

WELDING NOTE:
 1) WELDING ELECTRODE TO BE ER 10S-6 OF AWS A5.18
 2) WELDS TO CONFORM TO REQUIREMENTS OF ALS 276.02

This design is strictly private and confidential. It is the exclusive property of Ashok Leyland Ltd. and must not be used, copied or reproduced in part or whole without the company's written permission.