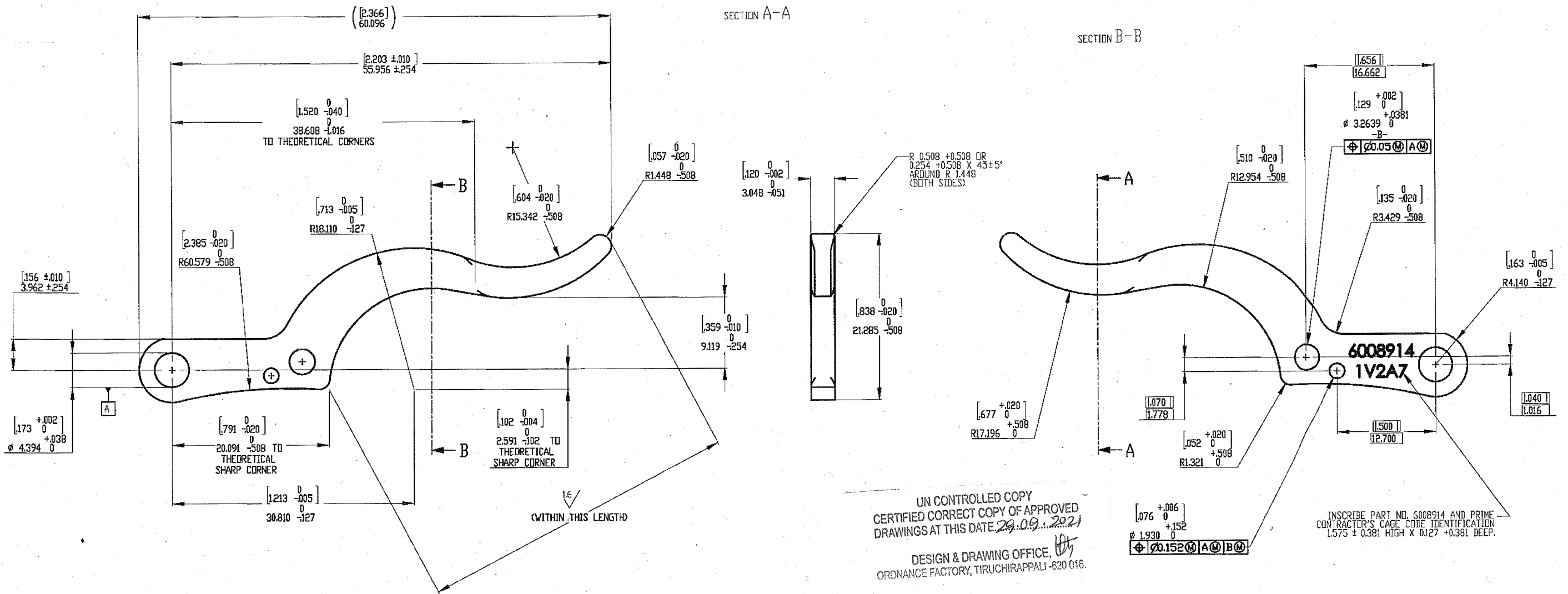
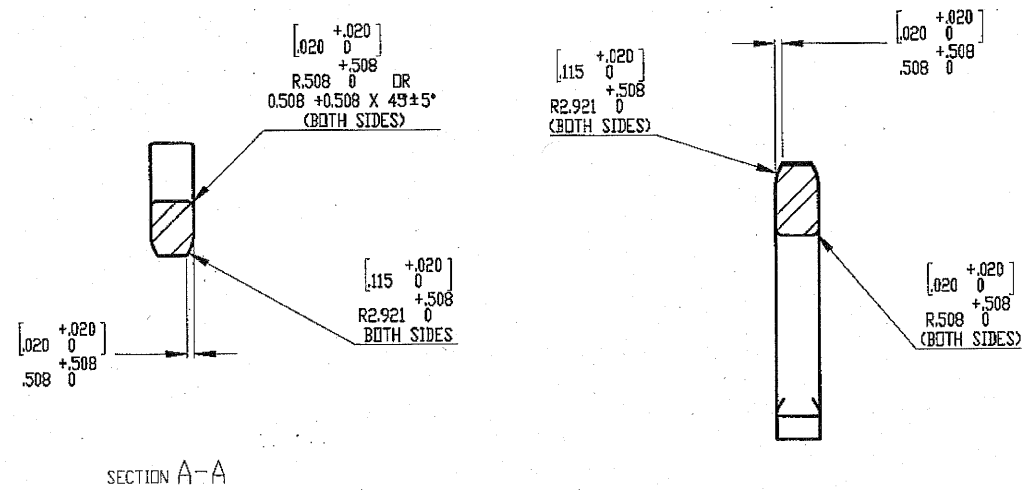


NOTES:

1. APPLICABLE SPECS/STANDARDS:  
A. ASME Y14.5M-1994
2. MATERIAL: ALLOY STEEL BARS, HOT WROUGHT, ASTM A322, GRADES 4140, 4142, 4340.  
ALLOY STEEL BARS, COLD FINISHED, ASTM A331, GRADES 4140, 4142, 4340.  
ALLOY STEEL, SHEET AND STRIP, ASTM A506, GRADES 4140, 4142, 4340.  
ALTERNATE MATERIAL:  
ALLOY STEEL, PLATES, ASTM A829, GRADES 4140, 4142, 4340.  
ALLOY STEEL, SHEET, STRIP, PLATE AMS 6359 (GRADE 4340).  
ALLOY STEEL, SHEET, PLATE, STRIP, AMS 6395 (GRADE 4140).  
ALLOY STEEL, SHEET, STRIP, PLATE, AMS 6434 (GRADE 4340).
3. HEAT TREATMENT: HEAT AT 838 TO 860° C. OIL QUENCH. TEMPER ONE HOUR MINIMUM TO ROCKWELL HARDNESS A72.5 - 76.
4. FINAL PROTECTIVE FINISH FINISH 5.3.1.2 OR 5.3.2.2 OF MIL-STD-171.
5. FINISH  $\sqrt{32}$  EXCEPT AS NOTED.
6. BREAK EDGES 0.076 ± 0.305 UNLESS OTHERWISE SPECIFIED.

REVISIONS				
ZONE	REV.	DESCRIPTION	DATE	APPROVED
	A	CREATE DRAWING	12/10/2015	G. HERSHBERGER



অন্যত্রের স্থানে প্রমাণিত  
 Provision: By Approved

24 AUG 2021

Signature: [Handwritten Signature]

ESB/AT/Sig  
 for Cdr (AP)

UNLESS OTHERWISE SPECIFIED		DIMENSIONS ARE IN MILLIMETERS		DRAWN		DATE		OHIO ORDNANCE WORKS, INC.	
FRONT VIEW	1/16"	FRONT VIEW	1/16"	DATE	12/27/15	DATE	12/27/15	DATE	12/27/15
RIGHT SIDE VIEW	1/16"	RIGHT SIDE VIEW	1/16"	DATE		DATE		DATE	
TOP VIEW	1/16"	TOP VIEW	1/16"	DATE		DATE		DATE	
LEFT SIDE VIEW	1/16"	LEFT SIDE VIEW	1/16"	DATE		DATE		DATE	
ISOMETRIC VIEW	1/16"	ISOMETRIC VIEW	1/16"	DATE		DATE		DATE	

SIZE D 6008914 REV A  
 SCALE: AS SHOWN WEIGHT: SHEET 1 OF 1