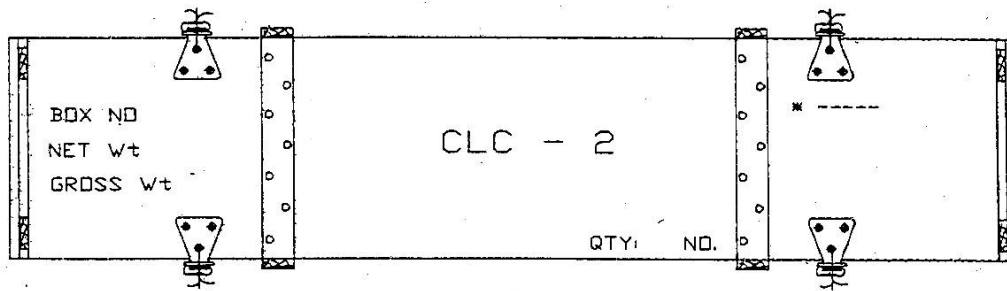
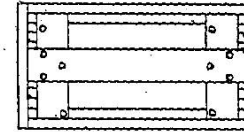
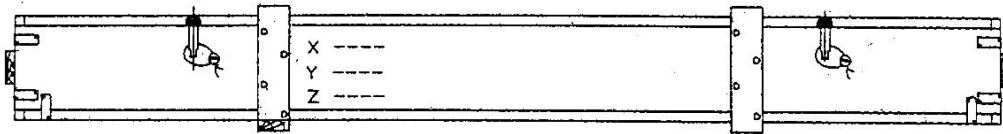


DRAWING CONVENTIONS CONFORM TO IS/SPECIFICATION

PART NO. DIMS ARE IN mm



NOTES :

BOX TO BE PAINTED FROM OUT SIDE WITH READY MIXED COLOUR OLIVE GREEN (IS/IS ISC220) TO SPEC 168

NAME OF THE COMPONENT TO BE STENCILLED CENTRALLY ON TOP OF LID WITH READY MIXED PAINT YELLOW GOLDEN (IS/IS. ISC 356) TO SPEC IS138 SIZE OF LETTERS 18X32HtX5THK * NAME & ADDRESS OF THE CONSIGNEE TO BE STENCILLED AT RIGHT SIDE OF LID AND QTY ON BOTTOM PORTION OF LID WITH WHITE READY MIXED PAINT TO SPEC IS138 AS SHOWN SIZE OF LETTERS 10X18HtX3THK

BOX NO, NET Wt & GROSS Wt TO BE STENCILLED AT LEFT SIDE OF LID WITH WHITE READY MIXED PAINT TO SPEC IS138 AS SHOWN SIZE OF LETTERS 10X18HtX3THK THE POSITION OF STENCILLING MUST BE EXACTLY AS SHOWN

X -DENOTES INITIAL/MONOGRAM OF MANUFACTURER
 Y -DENOTES MONTH/YEAR OF MANUFACTURE
 Z -DENOTES BATCH NO/CONSIGNMENT NO/LOT NO
 STENCILLING TO BE DONE ON FRONT PLANK OF THE BOX WITH WHITE READY MIXED PAINT TO SPEC IS138 SIZE OF LETTERS 10X18 HtX3THK

FOR METHOD OF PACKING SEE MEMRL DRG HE/CAST 090 SHT 1

DRN. ALS	CHK	TRD	COMP.	ASSY.DRG
CD.	PASSED	SCALE: 1:1	NTS	DESIGN AUTHORITY
	DATE: 25-03-2008	EST.MASS:		MEMRL PUNE-411021
APPROVED	DATE: 25-03-2008	GAUGE SCHD:		
R NO	DATE	AUTHORITY	BRIEF RECORD	ZONE
DRG. SEALED				

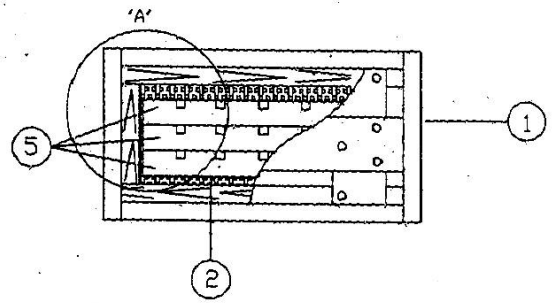
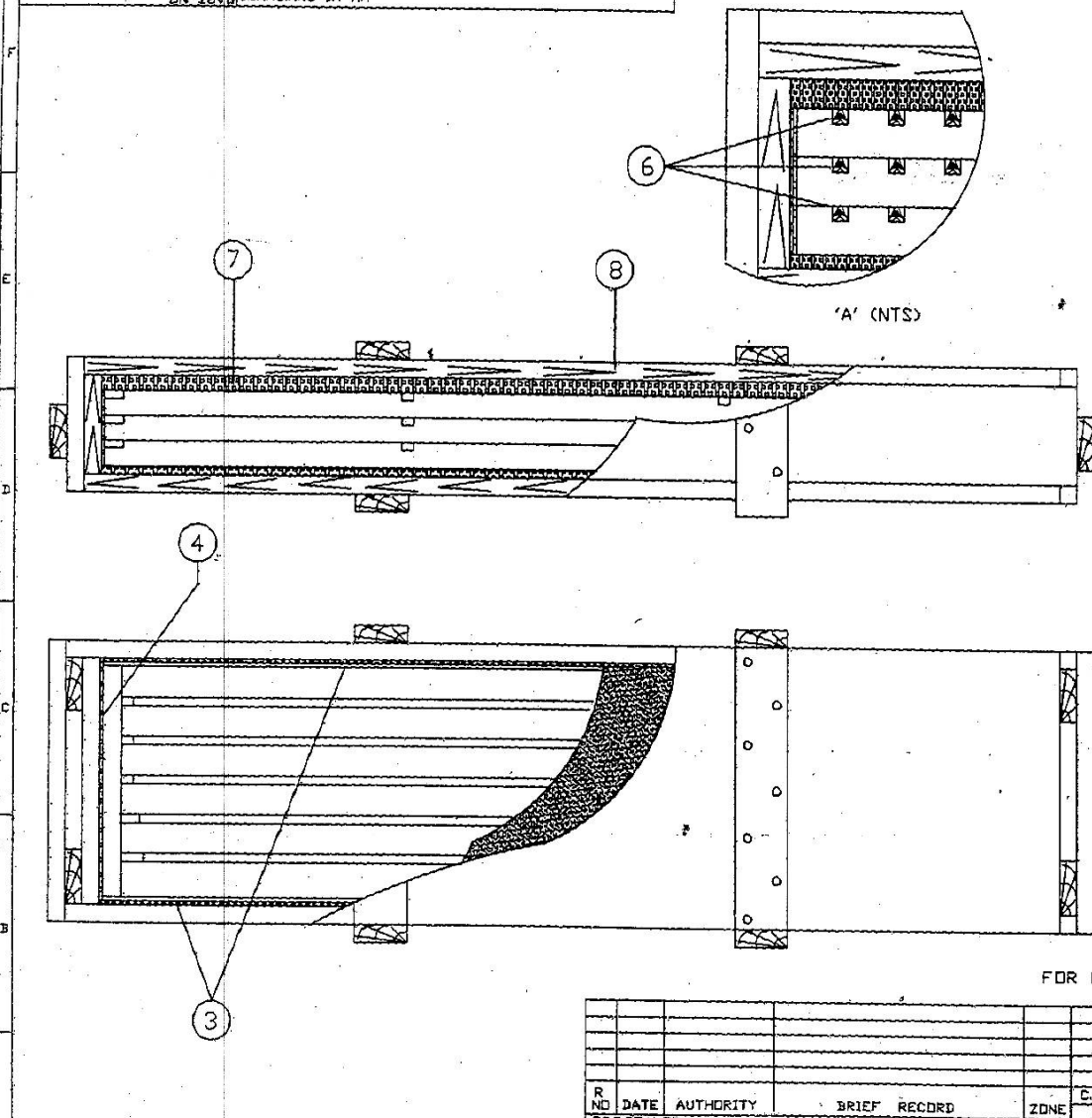
METHOD OF STENCILLING FOR :

PACKING BOX FOR CLC 2 (FILLED)

DRG NO.	MEMRL DRG HE/CAST 090
DET NO	18 SHTS. 15HTND 2
PART NO.	
D.S.CAT.NO.	
A.H.S.P.	

DRAWING CONVENTIONS CONFORM TO IS SPECIFICATION
DIMNS ARE IN MM

LIST OF COMPONENTS				
S.No.	DESCRIPTION	DRG No.	DET.No.	No.Off
1	BDX FOR CLC-1, 2, 3 & 4 (EMPTY)	HEMRL DRG. HE/CAST 089	1	1
2	BOTTOM PACKING SHEET	HEMRL DRG. HE/CAST 089	2	1
3	FRONT & REAR PACKING SHEET	HEMRL DRG. HE/CAST 089	3	2
4	SIDE PACKING SHEET	HEMRL DRG. HE/CAST 089	4	2
5	CLC-2 HOLDING TRAY (SUBASSY)	HEMRL DRG. HE/CAST 090	1	3
6	CLC 2	HEMRL DRG. HE/CAST 003	-	15
7	TOP PACKING SHEET	HEMRL DRG. HE/CAST 089	8	1
8	LTD	HEMRL DRG. HE/CAST 089	9	1



SEALING NOTE
 AFTER PACKING, THE CATCHES ARE TO BE SECURED AS SHOWN WITH WIRE STEEL SOFT GALVANISED Ø1.0 OR Ø1.25X160L CONFORMING TO SPEC IS:200-1978 TO BE PASSED THROUGH HOLES THE ENDS OF THE WIRE SHOULD BE TWISTED & SEALED WITH LEAD SEAL 10mm WHICH IS STAMPED WITH INSPECTOR MONOGRAM, THE ENDS OF THE WIRE TO BE LEFT LONG ENOUGH TO ENABLE UNTWISTING BY HAND
 TECHNICAL REQUIREMENT: AS PER SPEC IA948 (add)

FOR METHOD OF STENCILLING SEE HEMRL DRG HE/CAST 090 SHT 2

						DRN. ALS	CHD.	TRD.	COMP.	ASSY DRG
						CD.	PASSED	SCALE: 1:1 NTS		DESIGN AUTHORITY
						APPROVED	<i>[Signature]</i>	EST. MASS.		HEMRL PUNE-411021
							FOR DIRECTOR	GAUGE SCHED.		
								DATE: 25-03-2008		
R	NO	DATE	AUTHORITY	BRIEF RECORD	ZONE	C.D.	G.D.	MATL REF COMPONENT DRG		
							SIGN			

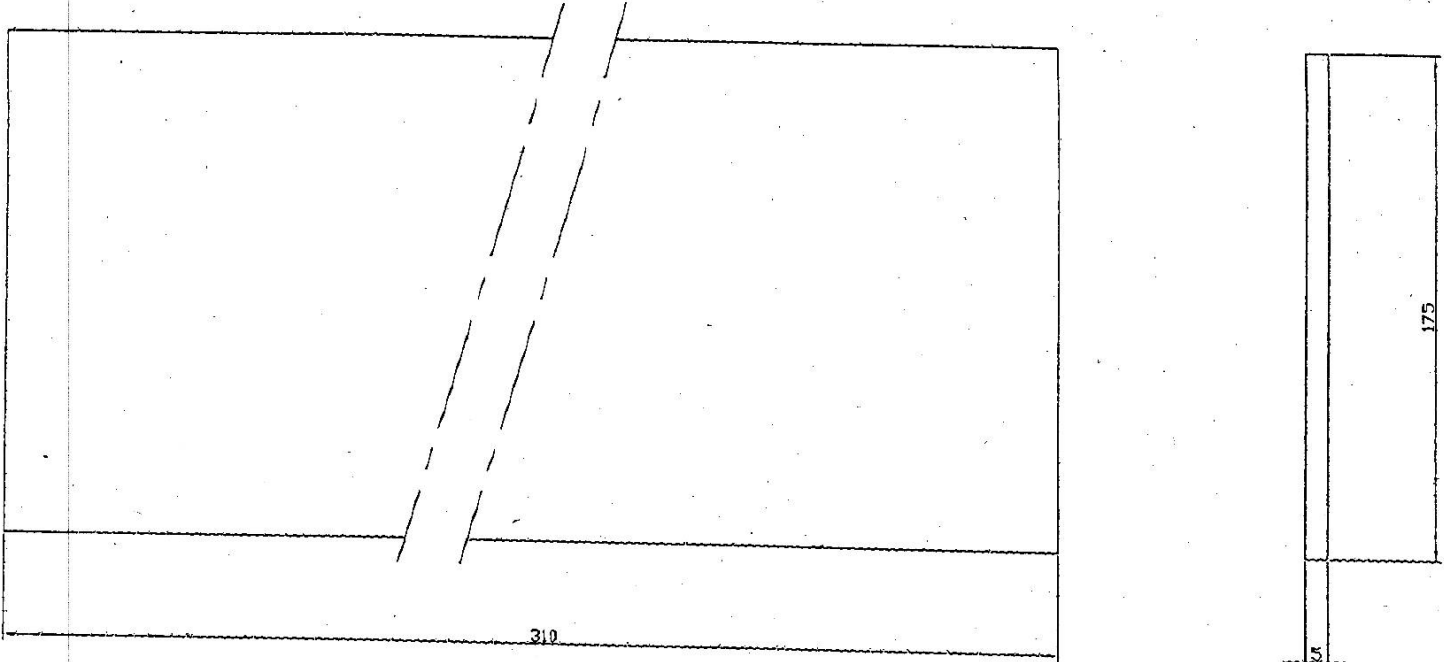
METHOD OF PACKING FOR :

PACKING BOX FOR CLC 2 (FILLED)

DRG NO.
 HEMRL DRG HE/CAST 090
 DET NO. 12 SHTS. (SHT NO. 1)
 PART NO.
 D.S.CAT. NO.
 A.H.S.P.

B 7 6 5 4 2 1

DRAWING CONVENTIONS CONFORM TO SPECIFICATION
 DIMNS. ARE IN mm

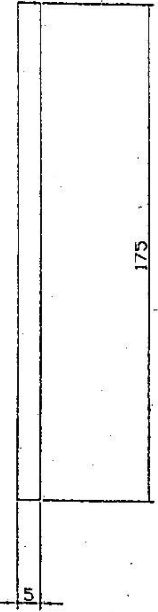
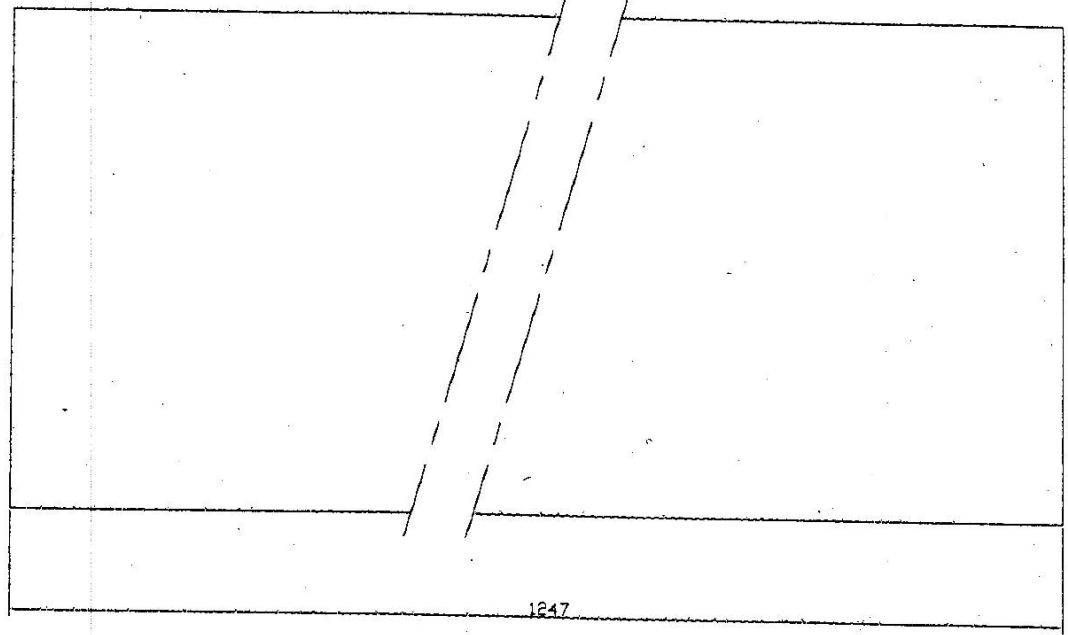


R. NO.		DATE	AUTHORITY	REVISION	ZONE	AHSP	DO	DRN. ALS	CHD.	TRD.	COMP.	ASSY. DRG. HE/CAST 089 SHT1
DRG. SEALED								C D'MAN	<i>SPYB</i>	SCALE: - NTS		090 SHT1, 091 SHT1 & 092 SHT1
								APPROVED	<i>[Signature]</i>	EST MASS.		
									<i>FOR DIRECTOR</i>	GAUGE SCHD.		
										DATE: 25-03-2008		
								MATERIAL: EXPANDED LINKED POLYETHYLENE FOAM		DESIGNER'S REF		
								TO: IND/ME/1023 (PROV) DC NO. 3857 ME		MEMRL DRG HE/CAST 089		
								PROTECTIVE FINISH: NA		DET No. 4 SHTS: SHT No.		
										PART NO.		
										D.S.CAT. No.		
										A.H.S.P.		

SIDE PACKING SHEET

8 7 6 5 4 3 2 1

DRAWING CONVENTIONS CONFORM TO IS SPECIFICATION
 PART NO. DIMNS. ARE IN mm



R. NO.		DATE	AUTHORITY	REVISION	ZONE	AHSP	DD	DRN. ALS	CHD.	TRD.	COMP.	ASSY.DRG. HEMRL DRG HE/CAST 089 SHT1, 090 SHT1, 091 SHT1 & 092 SHT1
DRG. SEALED								C D'MAN	<i>[Signature]</i>	SCALE: NTS		
								APPROVED	<i>[Signature]</i>	EST MASS:		
										FOR DIRECTOR	DATE: 25-03-2008	
								MATERIAL: EXPANDED LINKED POLYETHYLENE FOAM TO IND/ME/1023 (PROV) DC NO. 3857 ME		DESIGNER'S REF		
								PROTECTIVE FINISH: NA		HEMRL DRG HE/CAST 089		
										DET No. 3	SHTS. SHT.No.	
										PART NO		
												D.S.CAT.No.
												A.H.S.P.

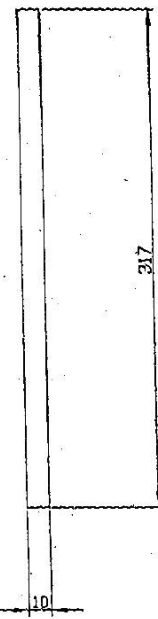
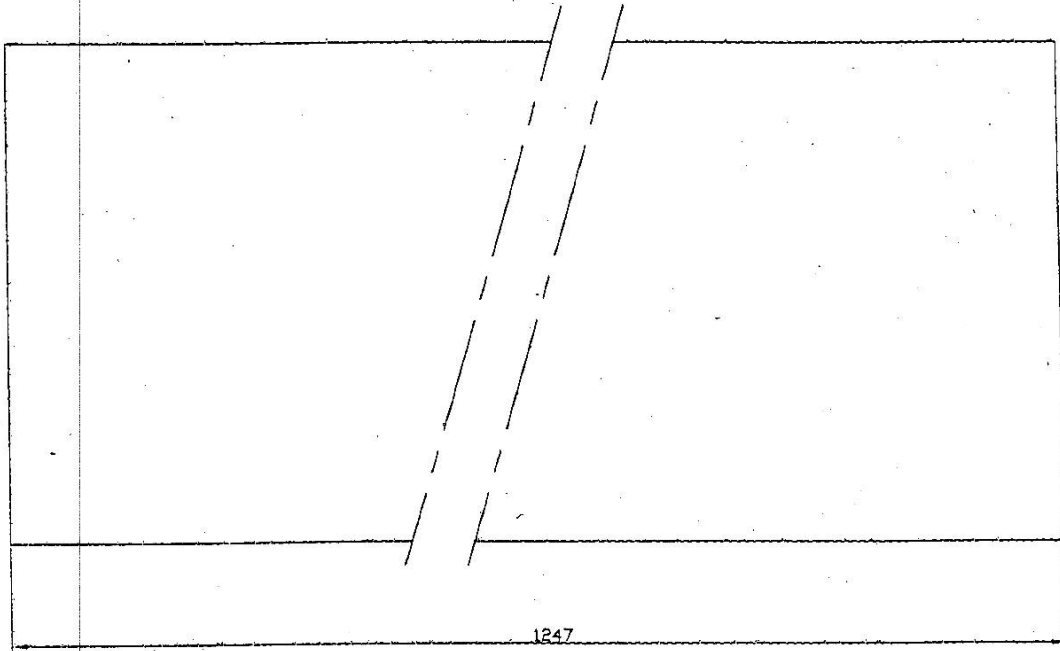
FRONT & REAR PACKING SHEET

5

B 7 6 5 4 2 1

DRAWING CONVENTIONS CONFORM TO IS/SPECIFICATION

PART NO. DIMNS. ARE IN mm



						DRN. ALS	CHD.	TRD.	COMP.	ASSY.DRG. HEMRL DRG HE/CAST 089 SHT1, 090 SHT1,091 SHT1& 092 SHT1
						C D'MAN	D.P.C.-D.D.	SCALE:- NTS		
						APPROVED	FOR DIRECTOR	EST MASS:		
								GAUGE SCHD.	DATE: 25-03-2008	
R. NO.	DATE	AUTHORITY	REVISION	ZONE	AHSP	DD	MATL: EXPANDED LINKED POLYETHYLENE FOAM TO IND/ME/1023 (PROV) DC NO. 3857 ME	DESIGNER'S REF HEMRL DRG HE/CAST 089		
DRG. SEALED							PROTECTIVE FINISH: NA		DET No. 2	SHTS. SHT.No.
										PART NO
										D.S.CAT.No.
										A.H.S.P.

BOTTOM PACKING SHEET

DRAWING CONVENTIONS CONFORM TO IS SPECIFICATION
DIMNS ARE IN MM

PLATE ANGLE-8
DRG NO IA 793 SHT9 EACH
SECURED TO FRONT/REAR & SIDE
PLANK BY 4 WOOD SCREWS
NO 6X12 LONG TO IS:6760-1972

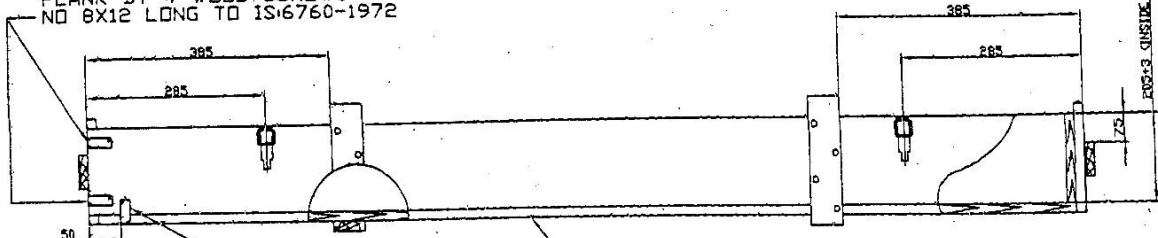
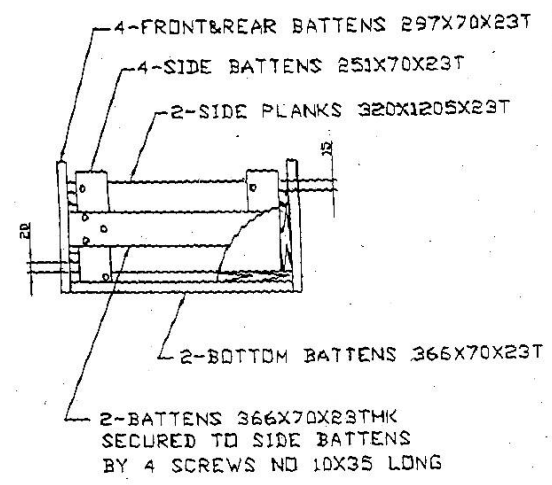
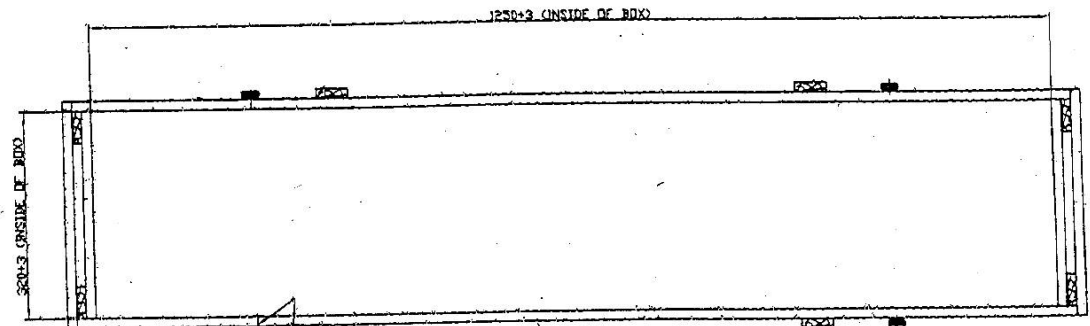


PLATE ANGLE-4
DRG NO IA 793 SHT9 EACH
SECURED TO FRONT/REAR & BOTTOM
PLANK BY 4 WOOD SCREWS
NO 6X12 LONG TO IS:6760-1972

BOTTOM PLANK 1296X366X23T



4-FRONT&REAR BATTENS 297X70X23T
4-SIDE BATTENS 251X70X23T
2-SIDE PLANKS 320X1205X23T
2-BOTTOM BATTENS 366X70X23T
2-BATTENS 366X70X23THK
SECURED TO SIDE BATTENS
BY 4 SCREWS NO 10X35 LONG



FRONT & REAR PLANK 1342X130X23T

STOWAGE DIMENSIONS
LENGTH - 1400
WIDTH - 420
HEIGHT - 305

CATCH LOCKING-
CATCH 4 NOS
DRG NO IA-1053 SHT 2
(PART NO ISV 283)

HASP DRG NO 1053 SHT 3
PART NO ISV 284
SECURED TO BODY BY 2 MS RIVETS
FLAT HD #4.76X20L TO IS:2155
OR ANY EQUIVALENT APPROVED LOCKING SYSTEM

BOX WITHOUT LID

NOTES

ALL PLANKS & BATTENS ARE TO BE SECURED WITH
SUITABLE WIRE NAILS OF ROUND, WIRE MS PLAIN HD
#2X50 LONG TO SPEC IS: 723-1972 & CLINCHED
ALL SCREWS, NAILS & RIVETS SHOULD BE GALVANISED
SCREWS TO BE WOOD MS C/SK HEAD TO SPEC IS:451-1972

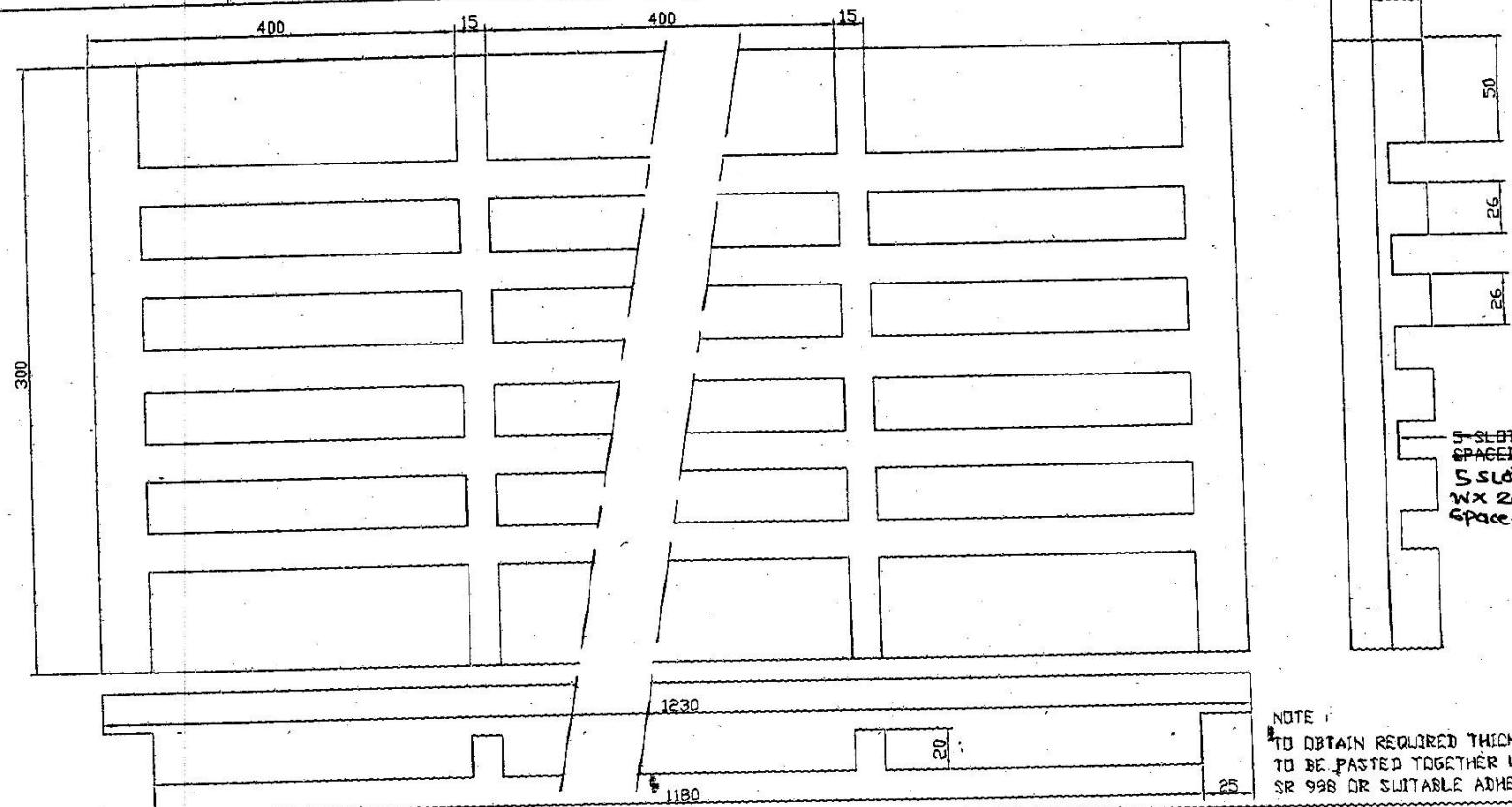
TECHNICAL REQUIREMENTS AS PER SPEC IA948 (ad)

DRN. ALS	CHD.	TRD.	COMP.	ASST. ENG. DESIGNED BY
CD.	PASSED G.S./G.	SCALE 1:1 NTS	EST. MASSI	DESIGN AUTHORITY
APPROVED	FOR DIRECTOR	GAUGE SCHD.	DATE: 25-03-2008	HEMRL PUNE-411021
R NO	DATE	AUTHORITY	BRIEF RECORD	ZONE
DRG. SEALED				
MATERIAL: DEDDAR/SAL/CHIR TO SPEC IND/HE/833 (F) PROV				DRG. NO.
				HEMRL DRG HE/CAST 089
				PART NO
				D.S. CAT. NO.
				APP. P.

TITLE

BOX FOR CLC 1,2,3 & 4 (EMPTY)

DRAWING CONVENTIONS CONFORM TO IS/SPECIFICATION
 PART NO. DIMNS. ARE IN mm



NOTE
 TO OBTAIN REQUIRED THICKNESS SHEETS
 TO BE PASTED TOGETHER USING FEVICOL
 SR 998 OR SUITABLE ADHESIVE MATERIAL

DRG. SEALED				DRN. ALS	CHD.	TRD.	COMP.	ASSY. DRG. HEMRL DRG HE/CAST 090/1	
				C D'MAN	<i>S.P.</i>	SCALE: NTS			
				APPROVED	<i>[Signature]</i>	EST MASS:			
					FOR DIRECTOR	GAUGE SCHD.			
						DATE: 25-03-2008			
R. NO.	DATE	AUTHORITY	REVISION	ZONE	AHSP SIGN	MATERIAL: EXPANDED LINKED POLYETHYLENE FOAM TO IND/ME/1023 (PROV) DC NO. 3857 ME		DESIGNER'S REF HEMRL DRG HE/CAST 090	
PROTECTIVE FINISH: NA								DET No. 2	SHTS: 1
								PART NO	
								D.S.CAT.No.	
								AH.S.P.	

CLC-2 HOLDING TRAY

Amended as per letter No - HEMRL/HE/CLC/2015 dt=30/01/15

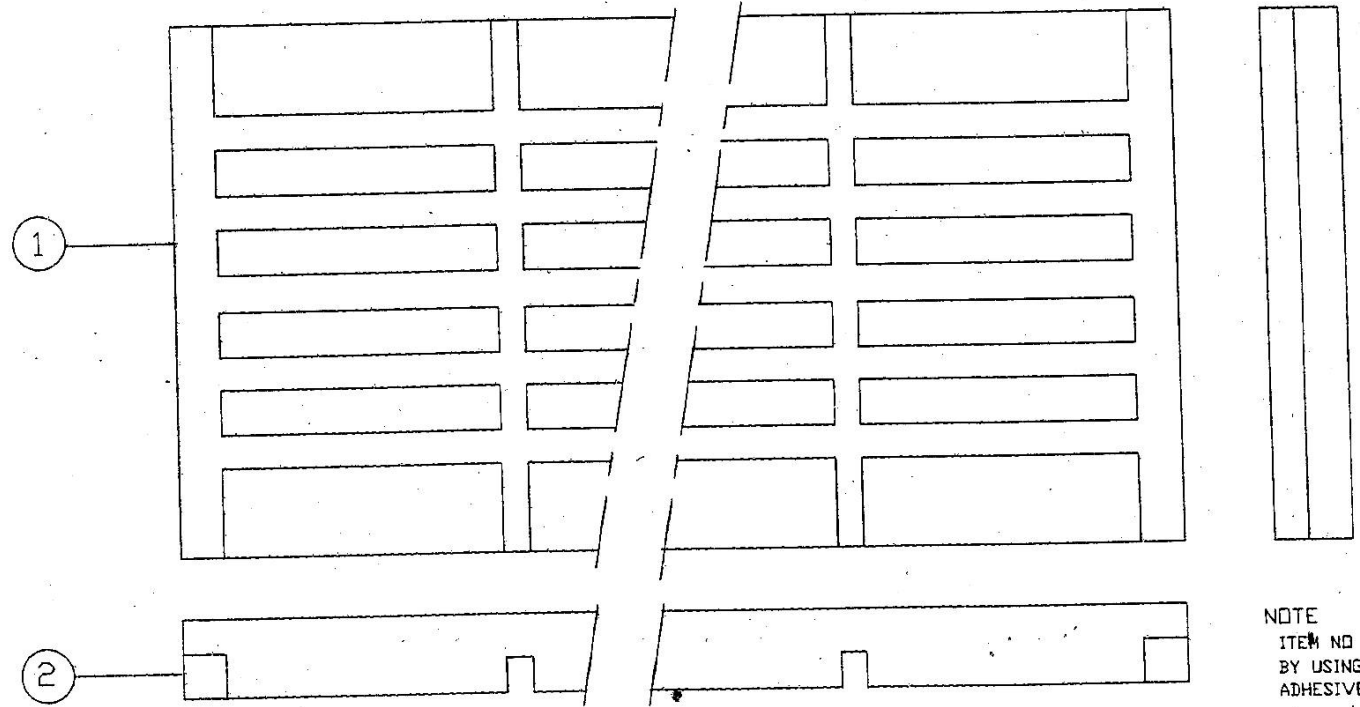


B 7 6 5 4 3 2 1

DRAWING CONVENTIONS CONFORM TO IS SPECIFICATION
 PART NO. DIMNS. ARE IN mm

LIST OF COMPONENTS

S.No.	DESCRIPTION	DRG.No.	DET.No.	No.OFF
1	CLC-2 HOLDING TRAY	HEMRL DRG HE/CAST 090	2	1
2	SIDE SUPPORT STRIP	HEMRL DRG HE/CAST 089	7	2



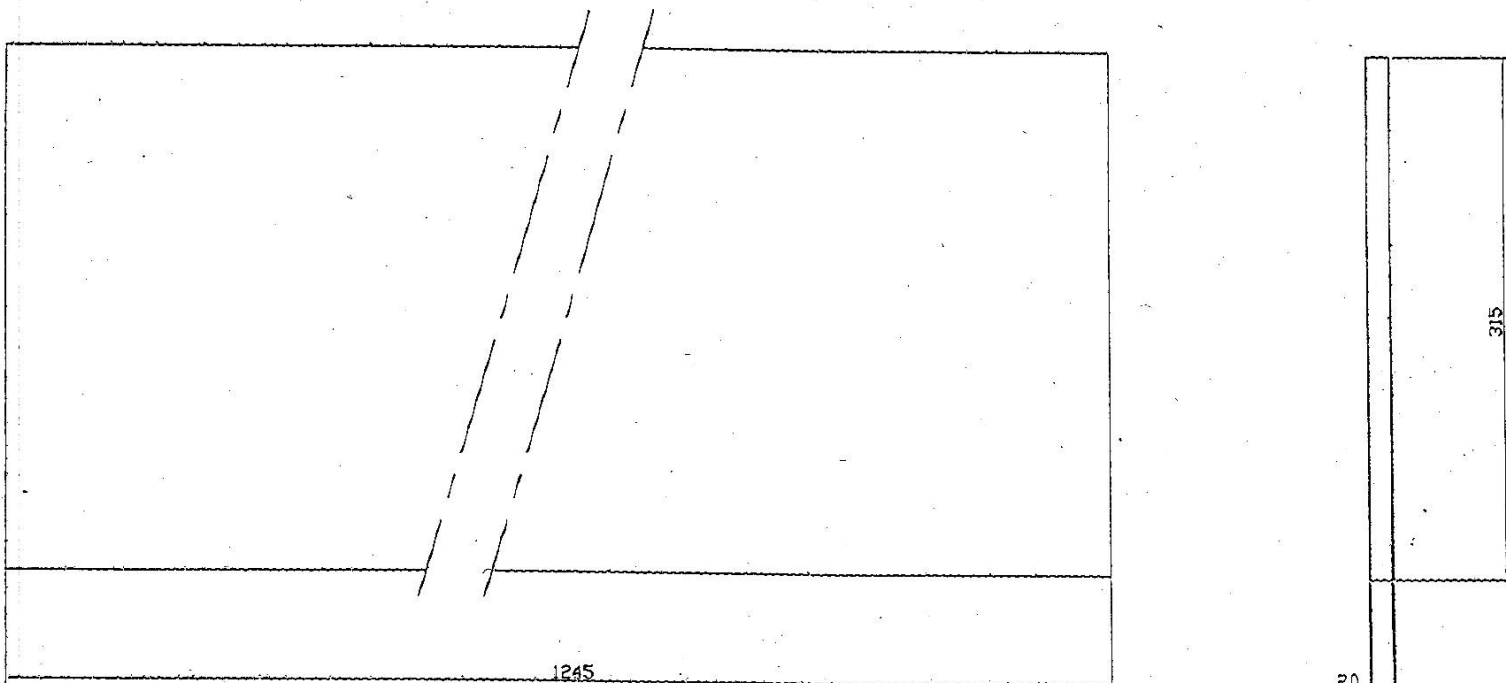
NOTE
 ITEM NO 2 TO BE PASTED TO ITEM NO 1
 BY USING FEVICOL SR 998 OR SUITABLE
 ADHESIVE MATERIAL

DRG. SEALED				DRN. ALS		CHD.	TRD.	COMP.	ASSY.DRG HEMRL DRG HE/CAST 090 SHT1	
				C D'MAN		8/2	SCALE:- NTS			
				APPROVED		FOR DIRECTOR	EST MASS.			
				MATERIAL REF COMPONENT DRG			GAUGE SCHED.			
				PROTECTIVE FINISH NA			DATE: 25-03-2008			
R. NO.	DATE	AUTHORITY	REVISION	ZONE	AHSP	DD	DESIGNER'S REF		HEMRL DRG HE/CAST 090	
				SIGN.			DET No. 1		SHTS. SHT.No.	
							PART NO			
							D.S.CAT.No.			
							AH.S.P.			

CLC-2 HOLDING TRAY (SUB ASSY)

DRAWING CONVENTIONS CONFORM TO IS SPECIFICATION

ON 1845 DIMNS. ARE IN mm

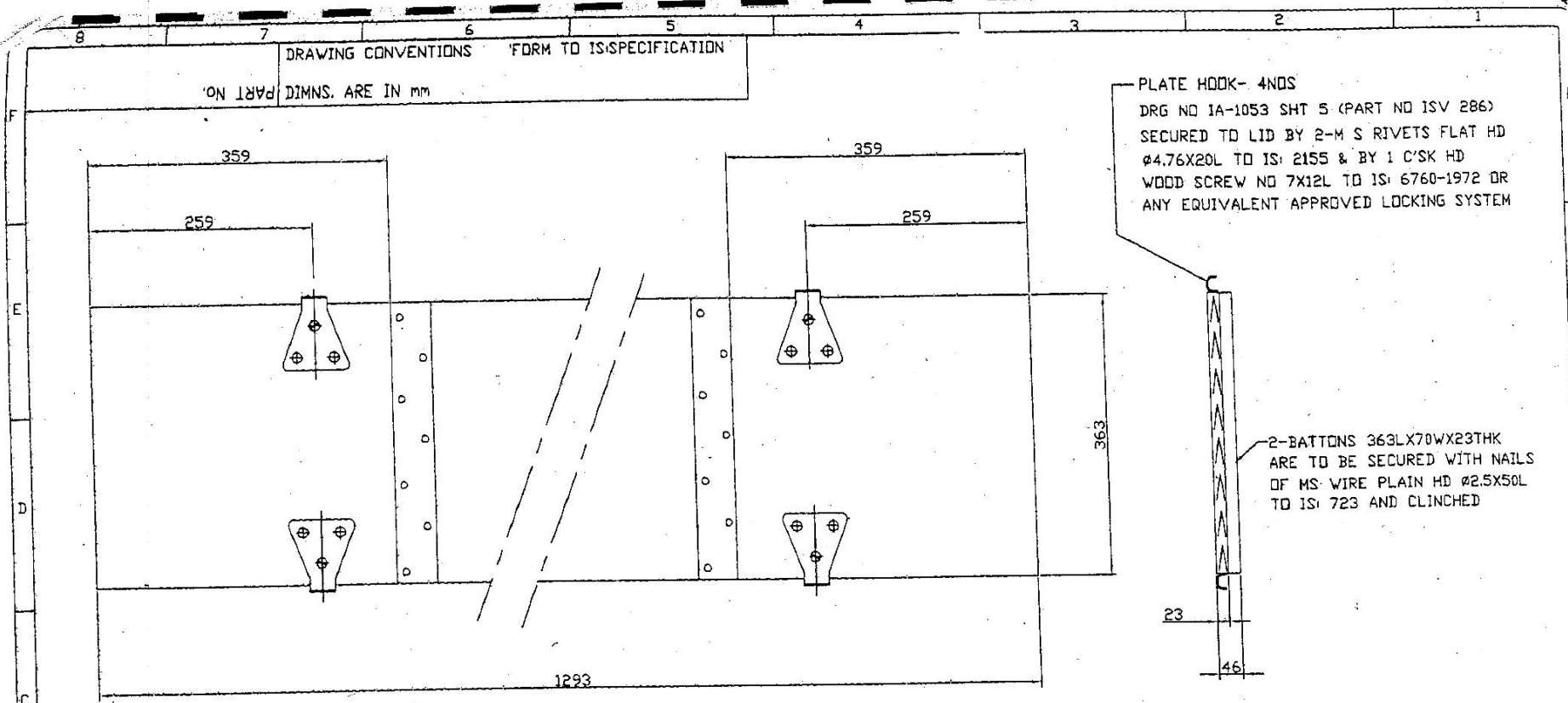


						DRN. ALS	CHD.	TRD.	COMP.	ASSY.DRG. HEMRL DRG HE/CAST 089 SHT. 090 SHT1,091 SHT1& 092 SHT1
						C D'MAN	<i>[Signature]</i>	SCALE:- NTS		
						APPROVED	<i>[Signature]</i>	EST MASS		
							FOR DIRECTOR	Gauge Schd.		
R. NO.	DATE	AUTHORITY	REVISION	ZONE	AHSP	DD	MATERIAL: EXPANDED LINKED POLYETHYLENE FOAM TO IND/ME/1023 (PROV) DC NO. 3857 ME		DESIGNER'S REF	
DRG. SEALED						SIGN.		DATE: 25-03-2008		HEMRL DRG HE/CAST 089
						PROTECTIVE FINISH: NA		DET No. 8		SHTS. SHT.No.
								PART NO		
								D.S.CAT.No.		
								A.H.S.P.		

TOP PACKING SHEET

6

4	3	2	1
DRG. CONVENTIONS CONFORM TO IS: SPECIFICATIONS.			
PART No.		DIMENSIONS ARE IN mm.	
F			
E			
D			
C			
B	R.No.	DATE	AUTHORITY
A	REVISION		ZONE
		AHSP	D.O.
		SIG.	
DRG. SEALED:-			
DRN.	ALS	CHD.	TRD.
		SCALE:- 1:2.5	COMP.
		EST.MASS:-	ASSY. DRG. HEMRL DRG HE/CAST 089/5
C.D'MAN	SPV3 01/C D.O.		
APPD.	FOR DIRECTOR		
		GAUGE SCHD:-	
		DATE:-25-03-2008	
MATL: EXPANDED LINKED POLYETHYLENE FOAM			DESIGNER'S REF.
TO : IND/ME/1023 (PROV) DC, NO. 3857 ME			HEMRL DRG HE/CAST 089
PROTECTIVE FINISH:- NA			DET NO 7
			SHTS.
			SHT.NO.
SIDE SUPPORT STRIP			PART No.
			D.S.CAT No.
			AHSP:-



DRAWING CONVENTIONS FORM TO IS/SPECIFICATION
 DIMNS. ARE IN MM

PLATE HOOK- 4NDS
 DRG NO IA-1053 SHT 5 (PART NO ISV 286)
 SECURED TO LID BY 2-M S RIVETS FLAT HD
 Ø4.76X20L TO IS: 2155 & BY 1 C'SK HD
 WOOD SCREW NO 7X12L TO IS: 6760-1972 OR
 ANY EQUIVALENT APPROVED LOCKING SYSTEM

2-BATTONS 363LX70WX23THK
 ARE TO BE SECURED WITH NAILS
 OF MS WIRE PLAIN HD Ø2.5X50L
 TO IS: 723 AND CLINCHED

ALL SCREWS, NAILS & RIVETS SHOULD BE GALVANISED
 NAILS TO BE ROUND WIRE, MS PLAIN HD
 TO SPEC IS: 723-1972

TECHNICAL REQUIREMENT: AS PER SPEC IA948 (ad)

				DRN. ALS	CHD.	TRD.	COMP.	ASSY. DRG. HEMRL DRG HE/CAST 089 SHT1, 090 SHT1, 091 SHT1 & 092 SHT1
				C D'MAN	<i>SPVA</i>	SCALE:- NTS		
				APPROVED <i>[Signature]</i>	DATE: 25-03-2008	EST MASS:		
						Gauge Schd.		DESIGNER'S REF
R. NO.	DATE	AUTHORITY	REVISION	ZONE	AHSP SIGN.	DD	MATL: DEDDAR/SAL/CHIR	HEMRL DRG HE/CAST 089
							TO SPEC IND/ME/833. (F) PROV	DET No. 9
DRG. SEALED							PROTECTIVE FINISH: NA	SHTS. SHT.No.
								PART NO
								D.S.CAT.No.
								AH.S.P.

LID