

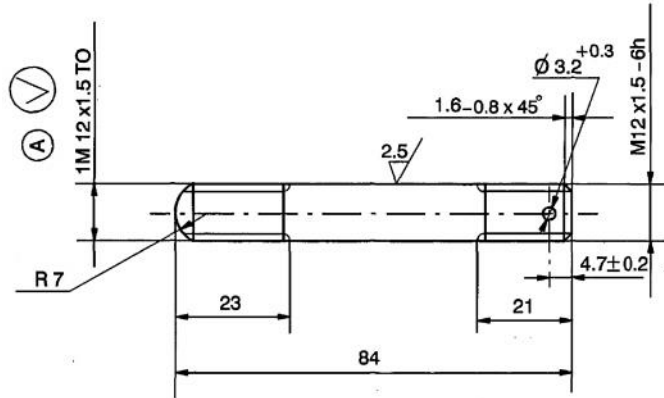
DRAWING RE-INDIANISED BASED ON RUSSIAN ORIGINAL  
ISSUE - A

JTO (D) DT. 9.6.09  
(R. BALAKRISHNAN)

DRAWING NUMBER

350-10-1

Rz80 ✓ (✓)



(A) \*\*

Sl.No.	R	REMARKS
1	1M 14 X 1.5 TO	ALL OTHER CONDITIONS AS PER STD. DRG.
2	P.C.D. = 13.026 $\frac{+0.170}{+0.095}$	

1. INSPECTION GROUP IV TT-11.
2. HRC<sub>3</sub> 28 ..... 35.
3. TECHNICAL REQUIREMENTS FOR THREADS AS PER STANDARD 82021-00.
4. DIMENSIONS WITH UNSPECIFIED TOLERANCES AND THE REST OF THE REQUIREMENTS AS PER STANDARD 82052-00.
5. COATING : CADMIUM 3, CHROMATIZING AS PER ЦУП-104 WITH ELIMINATION OF HYDROGEN EMBRITTLEMENT.
6. THE THREAD MAY BE MADE BY ROLLING WITH THE DIAMETER OF UNTHREADED PORTION WITHIN THE PITCH DIAMETER OF THREAD.
7. MECHANICAL DAMAGES OF CADMIUM COATING SUCH AS SCRATCHES, NICKS AND DENTS ARE ALLOWED ON ASSEMBLY UNITS, PROVIDED THE STEEL IS NOT EXPOSED.
8. REPAIR SIZE DIMENSIONS ARE ADDED WHERE INDICATED THUS (A), BASED ON OVERHAUL SPECIFICATIONS PART III REPAIR DRAWINGS. \*\*

(B) ALTERNATE MATERIAL: STEEL 709 M40 (EN 19)  
TO BS: 970, Pt I - 1983

PILOT SAMPLE SHOULD BE APPROVED BY A H S P BEFORE BULK PRODUCTION.

EST. WT. 0.056 Kg / TO BE STAMPED OR MARKED WHERE INDICATED THUS # ( LETTERS)

ALL SHARP EDGES AND CORNERS TO BE REMOVED UNLESS OTHERWISE STATED MACHINED CORNERS TO HAVE R OUTSIDE R INSIDE EQUIVALENT CHAMFERS ARE PERMISSIBLE.

		DRN	Sd/=	MATERIAL :- ROUND BAR	USED ON :-
		CHD	Sd/=	GOST 7417-75	Cb 306-01-20 /
		TCD	Sd/=	38XA GOST 1051-73	Cb 306-02-20 /
		APPD	Sd/=	CONTROLLERATE OF QUALITY ASSURANCE (HEAVY VEHICLES)	
		DATE	06.11.88	AVADI	
		SCALE:-	1 : 1	TITLE :-	
		DIMENSIONS IN mm		STUD M12 x 84	
		TOLERANCE ON DIMNS UNLESS OTHERWISE STATED IS: 2102-69		D S CAT NUMBER	
		ALL THREADS TO CONFORM TO		DRAWING NUMBER	
		ISSUE DATE NATURE OF AMENDMENTS		350-10-1	

A-11  
6

SIZE A3