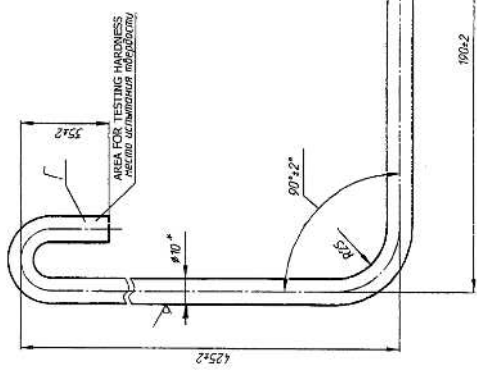
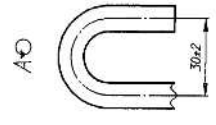


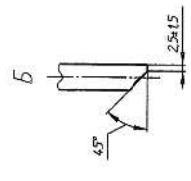
DRAWING NUMBER  
188.02.124

SHEET No. 1 OF 1

Rz320 ✓/N



AREA FOR TESTING HARDNESS  
ПРЕД ИСПЫТАНИЕМ ПОДГОТОВИТЬ



1. BH: 477 HB.
2. Допускается применение других групп отбелки поверхности проволоки по ГОСТ 14963-78 за исключением групп H и E.
3. \* Размер для справки.
4. Неуклонные выдерживание радиусы загиба в плоскости отгиба 10 мм.
5. Для измерения твердости допускается снимать лоскут на глубину 20±3 мм и глубиной 1±0,2 мм.
6. На поверхности детали допускается вмятины 0,5±0,2 мм.
7. Торсион испытывать приложением закручивающим воздействием Г на угол 45°±2° по стрелке В. Остаточные деформации не допускаются.
8. Покрытие Ц21МР.
9. Остальные требования по 520 ТУ1.

1. BH: 387 to 477.
2. Other groups of surface finish of wire as per ГОСТ 14963-78 except group H and E may be used.
3. \* Dimension for reference.
4. Unspecified internal bending radius in the bending plane are 10mm.
5. For measuring the hardness form a flat on the shank Г with length 20±3 mm and depth 1±0,2 mm.
6. Dents with depth 0,5±0,2 mm are allowed on surface of the part.
7. Check the torsion bar by turning the shank Г five times to angle 45°±2° along arrow В. The residual deformation are not permitted.
8. Coating: Zn-21, Chromonid.
9. Other requirements are as per 520 ТУ1.

PILOT SAMPLE SHOULD BE APPROVED BY A H S P BEFORE BULK PRODUCTION.

0.41 TO BE STAMPED ON MARKED WHERE INDICATED THIS # ( LETTERS)

TAIL SHARP EDGES AND CORNERS TO BE BROUSED UNLESS OTHERWISE STATED MACHINED CORNERS TO HAVE R 0.07 SIDE R. INSIDE EQUIVALENT CHAMFERS ARE PERMISSIBLE.

DIN	ГОСТ 14963-78	MATERIAL: WIRE	ГОСТ 14963-78	USED ON: 188.02.1056-64
CHD	Approved	WIRE	ГОСТ 14963-78	
APTD	Approved	WIRE	ГОСТ 14963-78	
DATE	23-6-04	CONTROLLER OF QUALITY ASSURANCE (HEAVY VERIFIERS)	AVADI	
SCALE:	1:1			
DIMENSIONS IN mm				
TOLERANCE ON DIMENSIONS				
STATED IN THIS DRAWING				
ALL THREADS TO CONFORM TO				
D S: CAT NUMBER				
DRAWING NUMBER				
188.02.124				

356  
SUPPLY CODE  
U-01-1-2  
D8009  
F 68 90  
SIZE A3 x 4

356

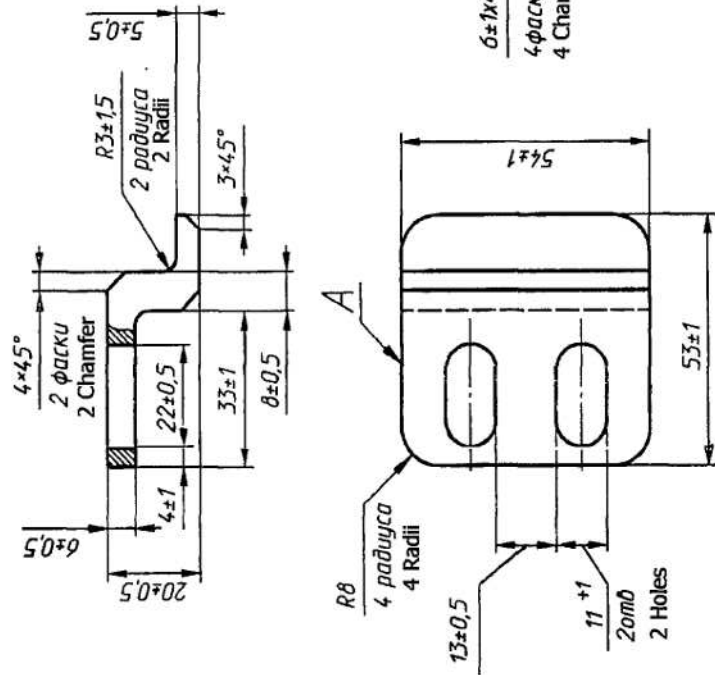
SUPPLY CODE  
U-01-1-2  
D90039

F - 60  
53

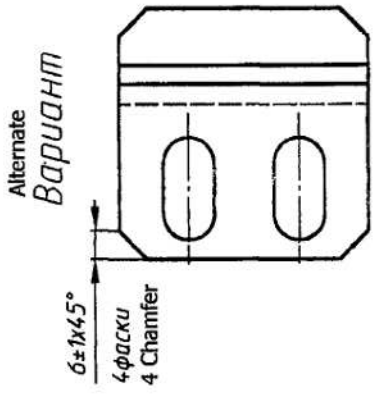
SIZE A3

DRAWING NUMBER  
**188.02.125**

SHEET No. 1 OF 1



1. Материал-заменитель: сталь 20Л25Л ГОСТ 977-88.
  2. Отливка 1-й группы по ГОСТ 977-88.
  3. Точность отливки 9Т-0-0-8 ГОСТ 26645-85.
  4. На поверхности А допускается остаток от питателя высотой не более 1мм.
  5. Требования к отливке по 172У4.10.
  6. Остальные требования по 520.ТУ1.
1. Alternate material is steel 20Л25Л ГОСТ 977-88.
  2. Casting 1st group as per GOST 977-88.
  3. Casting accuracy 9Т-0-0-8 GOST 26645-85.
  4. On surface A residue due to feeder with height not exceeding 1 mm is allowed.
  5. Requirements for casting are as per 172 TY.10.
  6. Other requirements are as per 520.TY1.



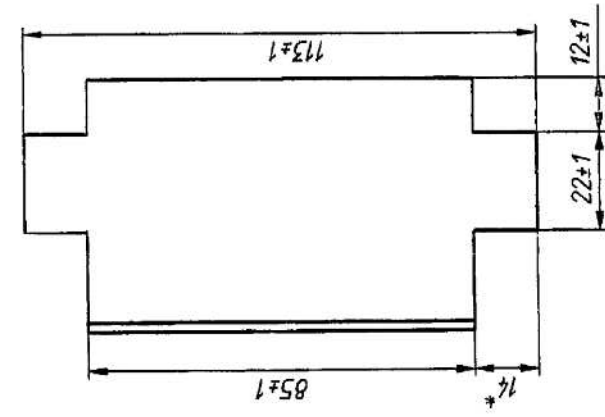
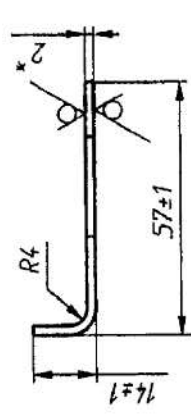
DRN	С.И.С.П.О.Р.С.	MATERIAL:-	USED ON:-
CHD	В.И.В.	Steel 15Л ГОСТ 977-78	188.02.102 c b c b
APPD	В.И.В.		188.02.103 c b c b
DATE	23.6.04	CONTROLLERATE OF QUALITY ASSURANCE (HEAVY VEHICLES)	
SCALE:	1:1	AVADI	
DIMENSIONS IN mm		TITLE:-	
TOLERANCE ON DIMNS UNLESS OTHERWISE STATED IS: 2102.-69		COVER PLATE	
ALL THREADS TO CONFORM TO		D S CAT NUMBER	DRAWING NUMBER
			188.02.125
ISSUE	DATE	NATURE OF AMENDMENTS	
PILOT SAMPLE SHOULD BE APPROVED BY A H S P BEFORE BULK PRODUCTION.			
EST. WT. (kg)	TO BE STAMPED OR MARKED WHERE INDICATED THUS # ( LETTERS)		
0.13			
ALL SHARP EDGES AND CORNERS TO BE REMOVED UNLESS OTHERWISE STATED MACHINED CORNERS TO HAVE R. OUT-SIDE R. INSIDE EQUIVALENT CHAMFERS ARE PERMISSIBLE.			



DRAWING NUMBER  
188.02.129-1

SHEET No. 1 OF 1

RZ160/M



1. Материал- заменитель лист 2 ГОСТ 19904-90 К330В 5-II-15 ГОСТ 16523-97
  - 2\* Размеры для справок.
  3. Остальные требования по 520.ТУ1.
1. Alternate material is Sheet К330В 5-II-15 GOST 16523-97
  2. \*Dimensions for reference.
  3. Other requirements are as per 520.TY1.

DRG. INDIANISED BASED ON RUSSIAN ORIGINAL ISSUE - NIL

356  
SUPPLY CODE  
U-01-1-2  
D90039

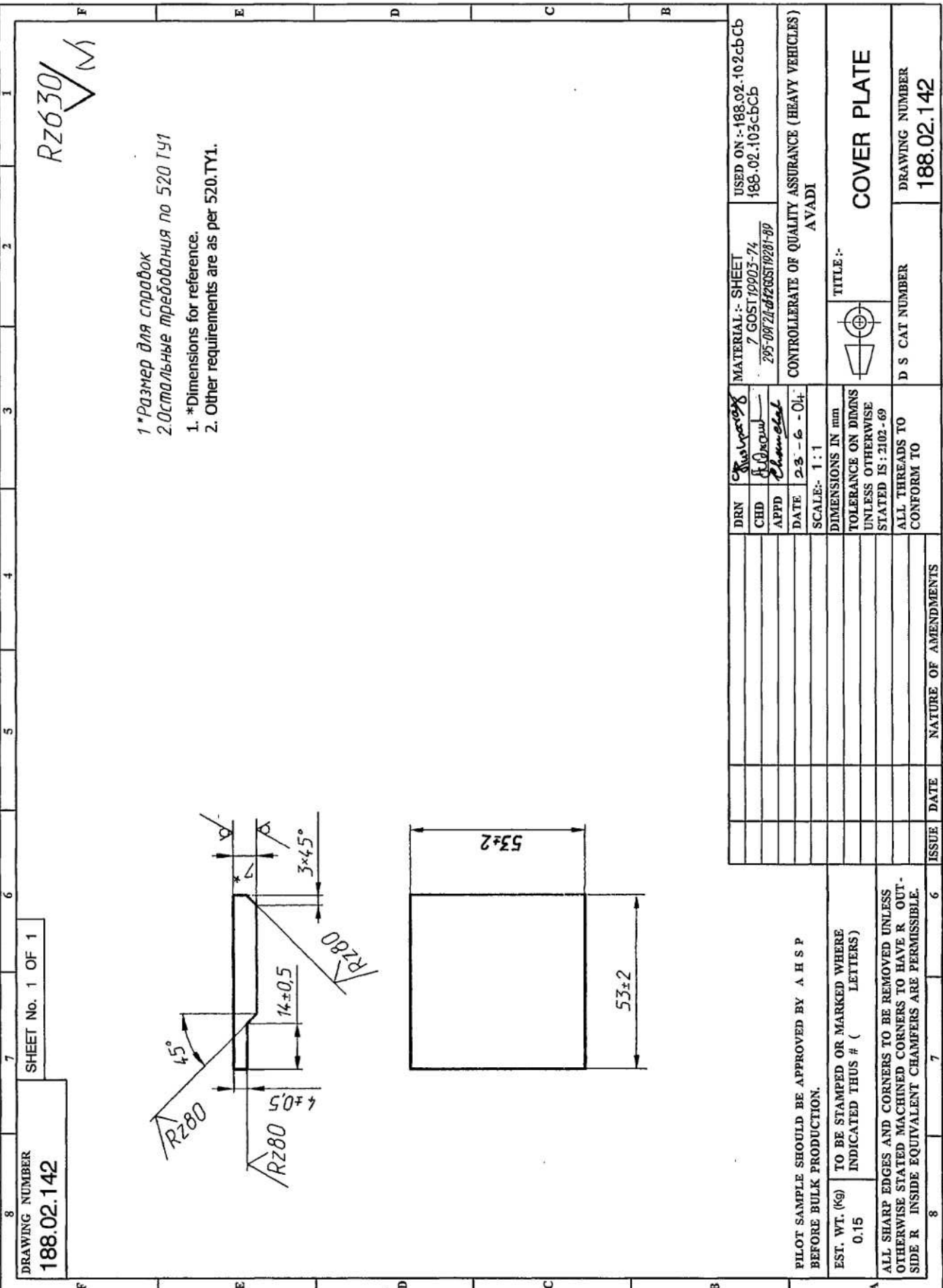
F-60  
55  
SIZE A3

DRN	С.И.С.И.С.И.С.И.	MATERIAL :- SHEET	USED ON :- 188.02.103CbCb
CHD	И.И.И.И.И.И.	2 GOST 19904-90	
APPD	С.И.С.И.С.И.С.И.	К270В 6-II-15 ГОСТ 16523-97	
DATE	23-6-04	CONTROLLERATE OF QUALITY ASSURANCE (HEAVY VEHICLES)	
SCALE:-	1:1	AVADI	
DIMENSIONS IN mm		TITLE:-	
TOLERANCE ON DIMNS UNLESS OTHERWISE STATED IS : 2102-69			SUPPORT
ALL THREADS TO CONFORM TO		D S CAT NUMBER	DRAWING NUMBER
ISSUE DATE		188.02.129-1	
NATURE OF AMENDMENTS			

PILOT SAMPLE SHOULD BE APPROVED BY A H S P BEFORE BULK PRODUCTION.

EST. WT. (KG) 0.1  
TO BE STAMPED OR MARKED WHERE INDICATED THUS # ( LETTERS)

ALL SHARP EDGES AND CORNERS TO BE REMOVED UNLESS OTHERWISE STATED MACHINED CORNERS TO HAVE R. OUT-SIDE R INSIDE EQUIVALENT CHAMFERS ARE PERMISSIBLE.



1\*Размер для справок  
 2.Остальные требования по 520 ТУ1  
 1. \*Dimensions for reference.  
 2. Other requirements are as per 520.TY1.

DRAWING NUMBER  
 188.02.142

SHEET No. 1 OF 1

Rz630

DRG. INDIANISED BASED ON RUSSIAN ORIGINAL ISSUE - NIL

356  
 SUPPLY CODE  
 U-01-1-2  
 D90039

F-60  
 60  
 SIZE A3

PILOT SAMPLE SHOULD BE APPROVED BY A H S P BEFORE BULK PRODUCTION.

EST. WT. (kg) 0.15 TO BE STAMPED OR MARKED WHERE INDICATED THUS # ( LETTERS)

ALL SHARP EDGES AND CORNERS TO BE REMOVED UNLESS OTHERWISE STATED MACHINED CORNERS TO HAVE R. OUT-SIDE R INSIDE EQUIVALENT CHAMFERS ARE PERMISSIBLE.

DRN	295-08/2142/05/19281-89	MATERIAL :- SHEET	USED ON :- 188.02.102cbCb
CHD	Subodh	7 GOST 19903-74	188.02.103cbCb
APPD	Shamset		
DATE	23-6-04	CONTROLLEDATE OF QUALITY ASSURANCE (HEAVY VEHICLES)	
SCALE:-	1:1	AVADI	
DIMENSIONS IN mm		TITLE :-	
TOLERANCE ON DIMNS UNLESS OTHERWISE		COVER PLATE	
STATED IS: 2102-69		D S CAT NUMBER	
ALL THREADS TO CONFORM TO		DRAWING NUMBER	
ISSUE		188.02.142	
DATE			
NATURE OF AMENDMENTS			



USED ON  
ZONE  
ITEM NO  
DRAWING NUMBER  
D S CAT NUMBER  
DESCRIPTION  
QTY  
REMARKS

17 175.02.524-03 STRAP 2  
 9 175.02.543-01 GASKET 2  
 18 175.02.543-03 GASKET 2  
 19 172.02.212 ANGLE PIECE 1  
 22 172.02.718 CLAMP 2  
 24 166.29.936 NUT 2  
 26 54.30.885-1 SPRING 2  
 27 GOST-1478-93 SCREW M6-6gx10.33H 2  
 38XC.016  
 28 GOST-6402-70 WASHER 10 65T 016 2

U-01-1-2  
 D90028  
 F-60  
 20

356  
 SUPPLY CODE  
 I/L CREATED BASED ON RUSSIAN ORIGINAL ISSUE - NIL

ZONE	ITEM NO	DRAWING NUMBER	D S CAT NUMBER	DESCRIPTION	QTY	REMARKS
	17	175.02.524-03		STRAP	2	
	9	175.02.543-01		GASKET	2	
	18	175.02.543-03		GASKET	2	
	19	172.02.212		ANGLE PIECE	1	
	22	172.02.718		CLAMP	2	
	24	166.29.936		NUT	2	
	26	54.30.885-1		SPRING	2	
	27	GOST-1478-93		SCREW M6-6gx10.33H	2	
				38XC.016		
	28	GOST-6402-70		WASHER 10 65T 016	2	
ISSUE	DATE	NATURE OF AMENDMENTS	ISSUE	DATE	NATURE OF AMENDMENTS	
DRN	APPD	TITLE:	CONTROLERATE OF QUALITY ASSURANCE (HEAVY VEHICLES) AVADI			
DRN	APPD	TITLE:	LEFT HAND COVER ASSY			
DATE	DATE	SHT. NO. 2 OF 2	D S CAT NUMBER	ITEM LIST FOR	188.02.103cbcb	