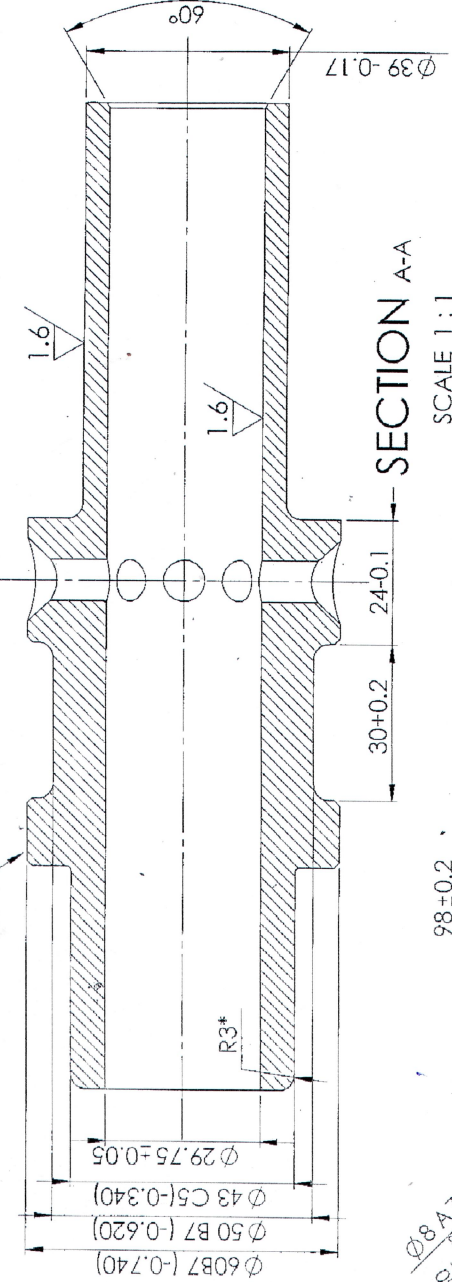
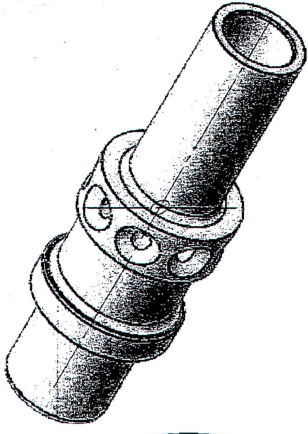
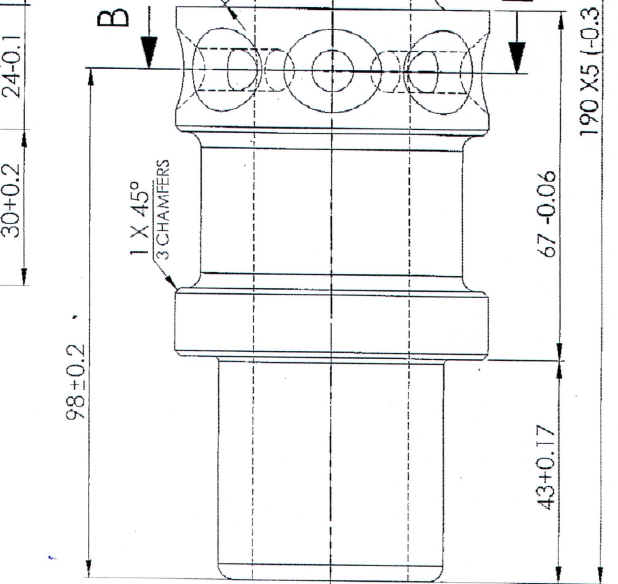


**TO BE MANUFACTURED THROUGH FORGING & MACHINING**



**SECTION A-A**  
SCALE 1:1



**SECTION B-B**  
SCALE 1:1

UN CONTROLLED COPY  
CERTIFIED CORRECT COPY OF APPROVED  
DRAWINGS AT THIS DATE... 21/9/23...  
DESIGN & DRAWING OFFICE,  
ORDNANCE FACTORY, TIRUCHIRAPPALI - 620 016.

**HEAT TREATMENT AND POST HT  
OPERATIONS WILL BE DONE AT OFI**

**SAMPLE MUST BE SUBMITTED AND GET APPROVED  
BEFORE BULK PRODUCTION / SUPPLY**

**INDGS MATRL:**  
STEEL Gde 826M31 Cond. "Z", S&P CONTENT 0.025% EACH MAX. TO  
BS:970 Pt.1-1983  
(OR) 40Ni2Cr1Mo28, IS:4367-67  
(OR) STEEL Gde 817M40 CONDITION "Z"  
S&P CONTENT 0.025% EACH MAX. TO  
BS:970 Pt.3-1991

**REF:**  
**FORGING DRAWING No. 64C 2035 200 D3**

RIBS TO BE BLUNTED TO R=0.6mm

Material: STEEL-30X12M14A CCT 3-98-80	DWG Details	SUB: <b>PRE-MACHINED BLANK</b>
Alt. Material:	SIGN: [Signature]	FOR: GAS CYLINDER C-2035
Hardness: AS PER DRG	CHECKED: [Signature]	PROJ.: 30mm
Finish: Un lubricated dimensions	HOS/D&DC: [Signature]	Design Ref: 2A42.02.035
AMENDMENTS: 3/3/2023	Dr. Officer: [Signature]	DWG. No.: <b>TEND 2727</b>
	CC Officer: [Signature]	No.: A3
	Q.C. Officer: [Signature]	QPG -
	D.D.G. [Signature]	WT. 1389.43 gm
	APPROVED on 29/9/2023	(Appx) SHEET: 1 OF 1

*[Signature]*  
HOS/PS-6



ORDNANCE FACTORY  
TIRUCHIRAPPALI - 16.