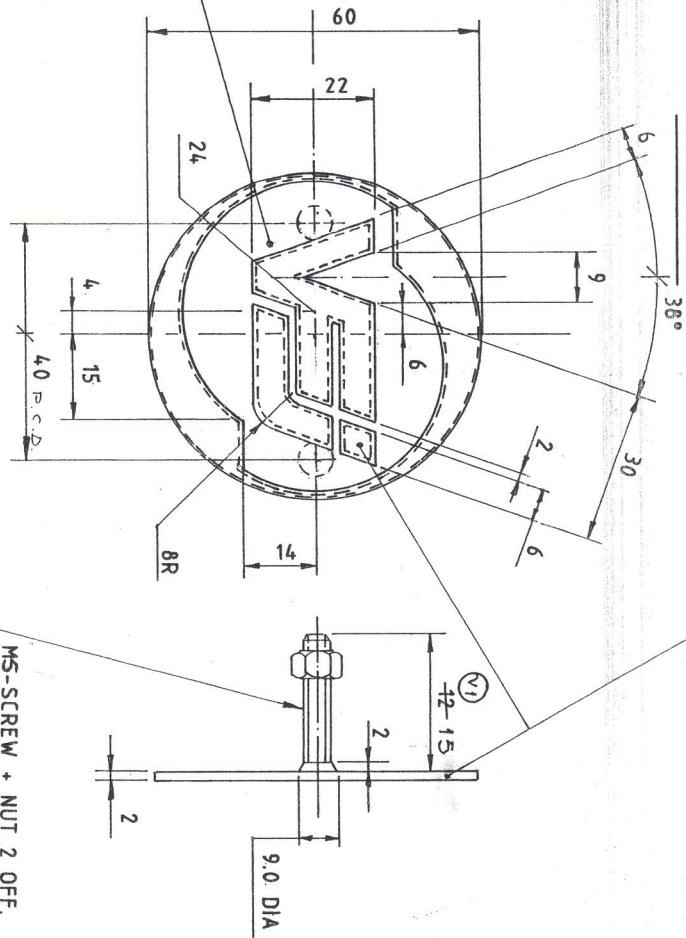


ALL DIMENSIONS ARE IN M.M.

THESE REGIONS TO BE BUFFED TO GIVE A BRIGHT FINISH.

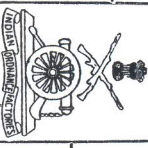


THIS AREA TO BE TEXTURED FINISH

NOTE:-
 MATERIAL FOR BASE PLATE: COPPER
 MATERIAL FOR SCREWS: BRASS.
 SURFACE TREATMENT: TO BE NICKLE/CHROMIUM PLATED.
 NICKEL PLATING THICKNESS IS 10 MICRONS MINIMUM.
 CHROMIUM PLATING THICKNESS 0.1 MICRONS MINIMUM.
 SHADED REGIONS TO BE APPLIED WITH ^{BLACK} ~~BLUE~~ VITREOUS (V2)
 ENAMEL TO FILL UP THE DEPTH OF 0.5 IN THE BASE PLATE.
 SCREWS TO BE JOINED WITH PLATE BY RESISTANCE WELDING.

PILOT SAMPLE TO BE APPROVED BEFORE BULK SUPPLY.

Item	Description	No. off	Material	Standard	Size/Weight/Pattern	Remarks
Gen. Tol Not Specified						
Linear Dimension						
0 - 6	± 0.1					
6 - 30	± 0.08					
30 - 120	± 0.08					
120 - 315	± 0.08					
315 - 1000	± 0.08					
1000 - 3000	± 0.12					
Angular Dim.						
0 - 10	± 1'					
10 - 50	± 30'					
50 - 100	± 20'					
> 100	± 10'					



VFJ
VEHICLE FACTORY
JABALPUR.

VFJ/17/09/00038

The copyright of these drawings and all attachments there to belongs to the Indian Ordnance Factories, Ministry of Defence, Govt. of India. They should not be copied, reproduced in any way or the information contained therein made available to unauthorized persons without the written permission of the Director General of Ordnance Factories.