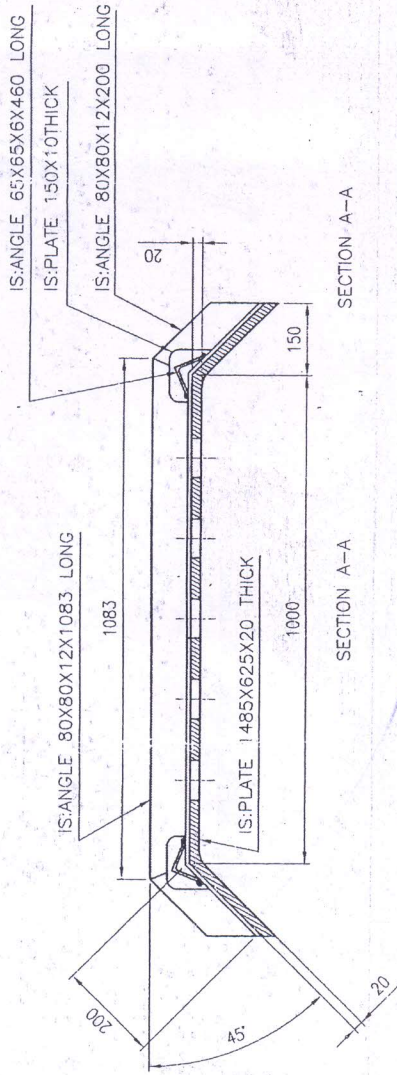
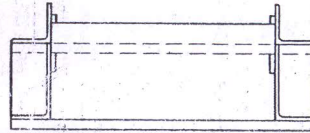
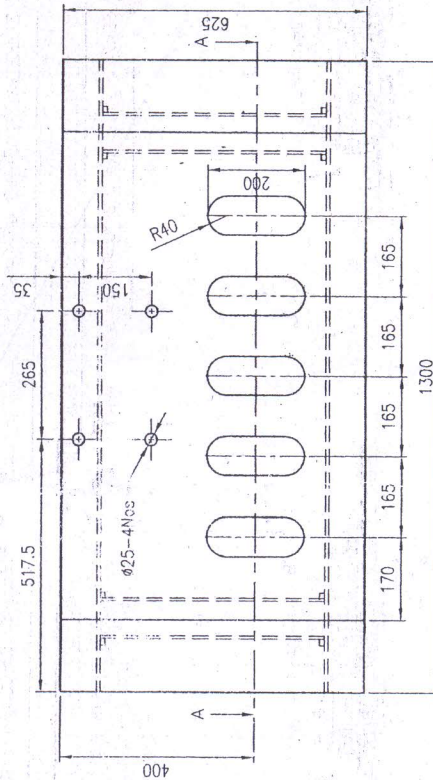


DRG. NO: FDY-278 B



SECTION A-A

SECTION A-A



WELDED CONSTRUCTION

COPY ISSUED BY CUM/AFM
यह प्रति सी डी डी/ओ.एफ.ए.जे.
द्वारा दी गई है।

दिनांक: 14-03-2018
 for JMW/CDD

CHEMICAL PROPERTIES OF MILD STEEL PLATE

MATERIAL	C%	S%	P%	Cu%	Si%	Mn%
STANDARD DIN-EN10025	<0.18	0.035	0.035	-	-	-

OR

STANDARD ASTM A36 GRADE	C%	S%	P%	Cu%	Si%	Mn%
	<0.25	<0.050	<0.040	>0.20	<0.40	0.80-1.20

NOTE:-

- 1) ALL CORNERS SHOULD BE CHAMFER BEFORE WELDING.
- 2) ALL JOINTS ARE TO BE WELDED WITH CARE.
- 3) ALL SHARP CORNERS TO BE REMOVED.

DIMENSIONS ARE IN mm		THIRD ANGLE PROJECTION		SCALE: 1:10		DATE		SIGN.		AMENDMENTS	
REV.	DATE	DESCRIPTION	NAME	DATE	APPROVED	DATE	DATE	DATE	DATE	DATE	DATE
B	08/01/18	DESIGN MODIFIED, NEW NEGATIVE MADE. DRG. ADV B.	S. G. J.	08-1-18	JMW/AFM	08-1-18					
			CHECKED	08-1-18							
			HOS/CDD	08-1-18							
			JMW/FDY	09-1-18							
				10-1-18							

WATERVAL	MILD STEEL PLATE	आर्डिनैन्स फैक्टरी अम्बाझरी
NOMENCLATURE:	DE-DROSSING SPADE FOR ERMAT FURNACE	ORDNANCE FACTORY AMBAJHARI
DRG. NO:	FDY-278 B	
SHEET NO:	1	
NO. OF SHEETS:	1	
OPERATION NO:		
COMPT:	VARIOUS	