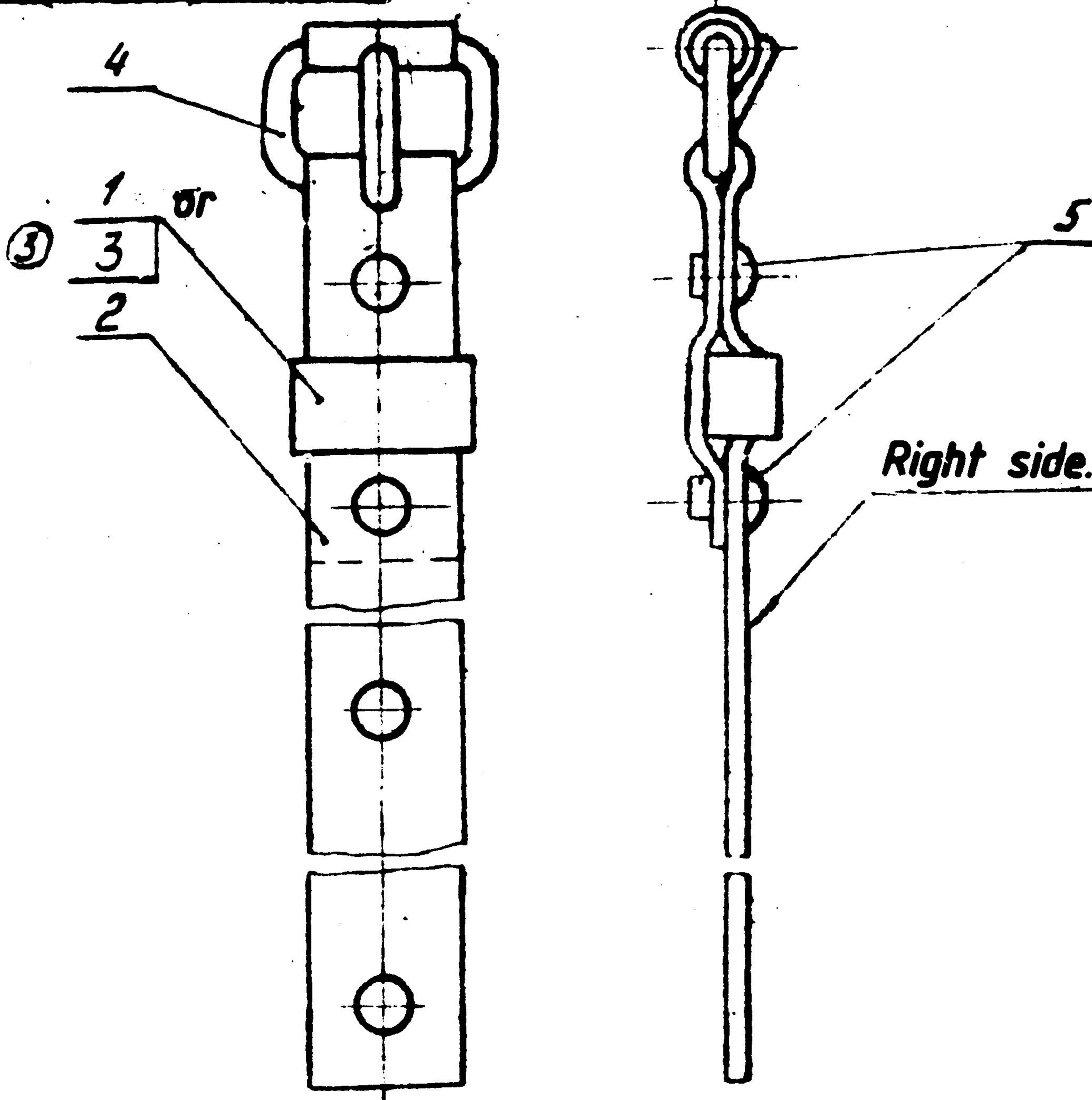


765-77-LL-596



Right side.

110000. 8 0014
 95-29073

REF. NO.	Designation.	Description	Qty	Remarks
1	701-85-Cb169	Loop		1 PIECES. ALTERNATE PART ISA REF. NO. 3
2	765-77-62	Belt	1	
4	Buckle	n-10-07	1	Commercial
	steel	zinc-plated		without drawing.
5	Kholniten-type rivet	steel, nickel-plated 3x-25.	2	
3	765-94-783	Loop		1 PIECE. ALTERNATE PART IS PART REF. NO. 1

APPROVED  N VASU

CHECKED 

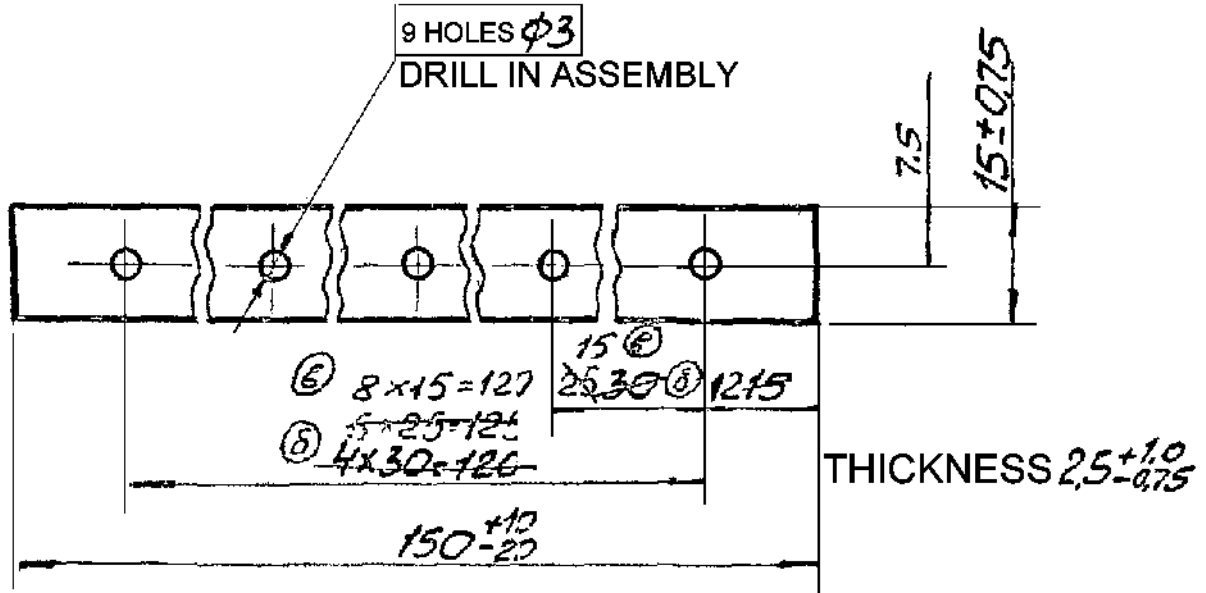
765 - 77 - Cδ.124 50 of 77

**CONTROLLERATE
OF
INSPECTION
(ICV)**

BELT

	WEIGHT	SCALE
	0,02	1:1
	SMT	SMTS
	86	

765-94-82



- 1) Alternate material is harness leather type "K" GOST 1904-70.
 - 2) Other requirements are as per TY 38-105 816-75.
- Ⓐ EQ. MATERIAL:- HARNESS LEATHER IS: 580-73

00749-ICV I. Roman 23-12-99	Ⓐ	EQ. MATERIAL ADDED.
DC(I)No. & DATE	ISSUE	AMENDMENTS

APPROVED *[Signature]*
E. P. RADSSOL

CHECKED *[Signature]*
K. S. RAD, A/P

765-94-82

CONTROLLERATE
OF
QUALITY ASSURANCE
(ICV)

COVER

WEIGHT SCALE

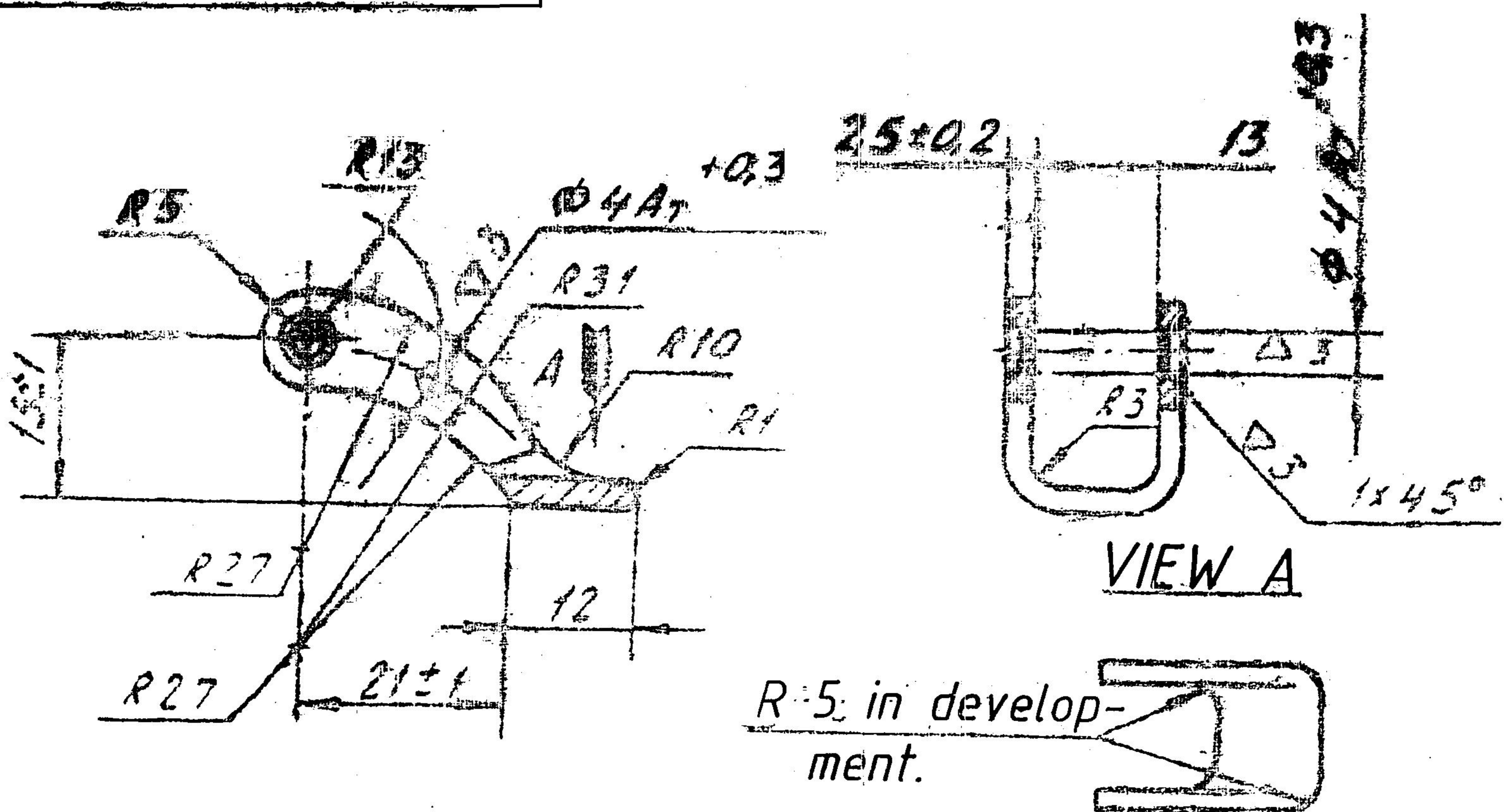
0.006 1:1

SHT 1 SHTS 1

LEATHER HARNESS 'Л'
GOST 1904-70

427-46 591

Unless otherwise specified



Ⓐ EQ. MATERIAL :- SHEET Gde.'O' QUARTER HARD TO IS:513-86 OR Fe 410-1079 TO IS:1079-73.

- 1) Blunt sharp edges.
- 2) Provide dimensions specified without deviations with an accuracy of $\pm 0,5$.
- 3) Coating : Zinc-plated, 24 microns thick, chromated. Remove hydrogen embrittlement.
- 4) Alternate material is steel cm 3 GOST 380-71 and 15, 20, 25, 30, 35, 40 and 45 GOST 1050-74.

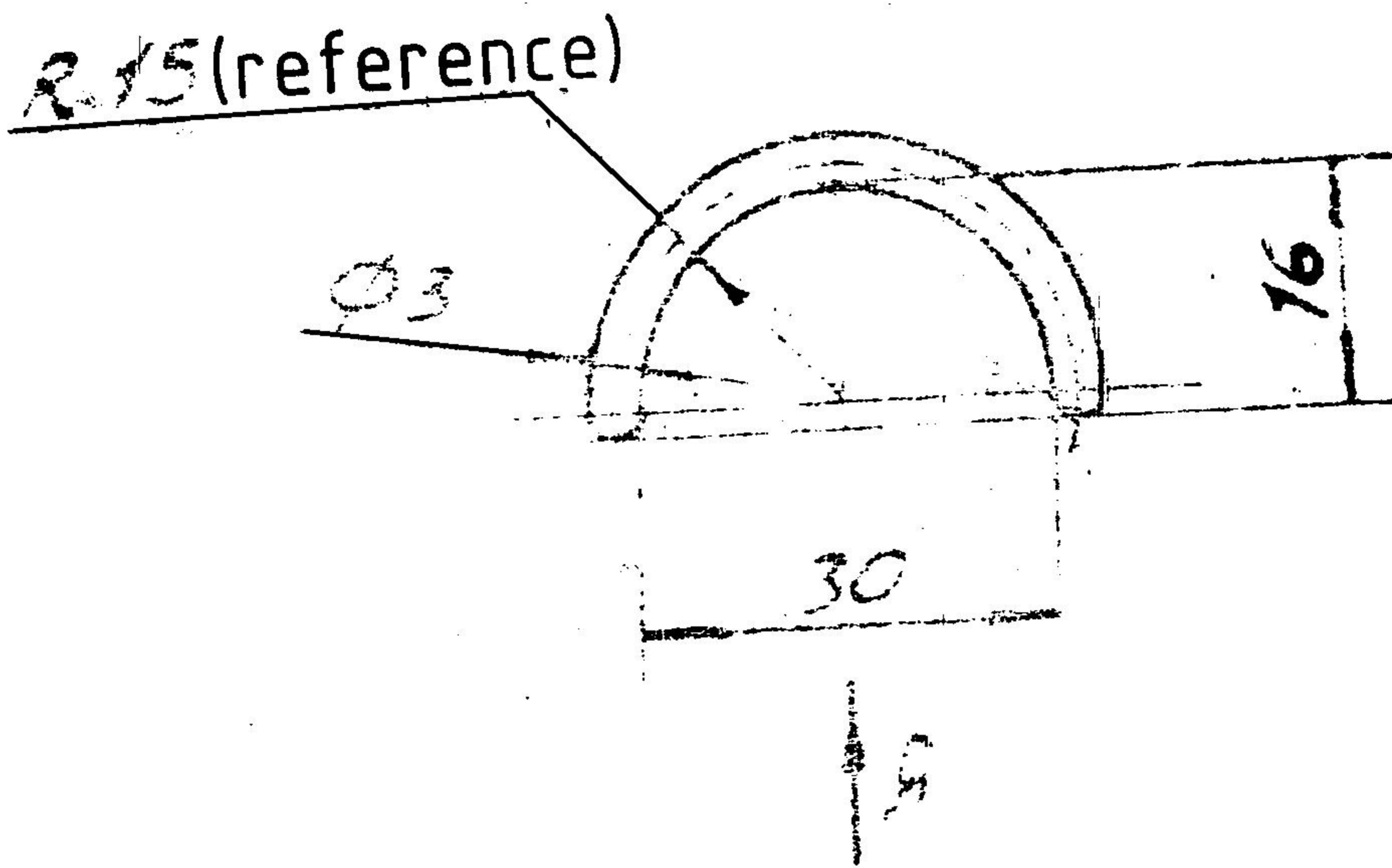
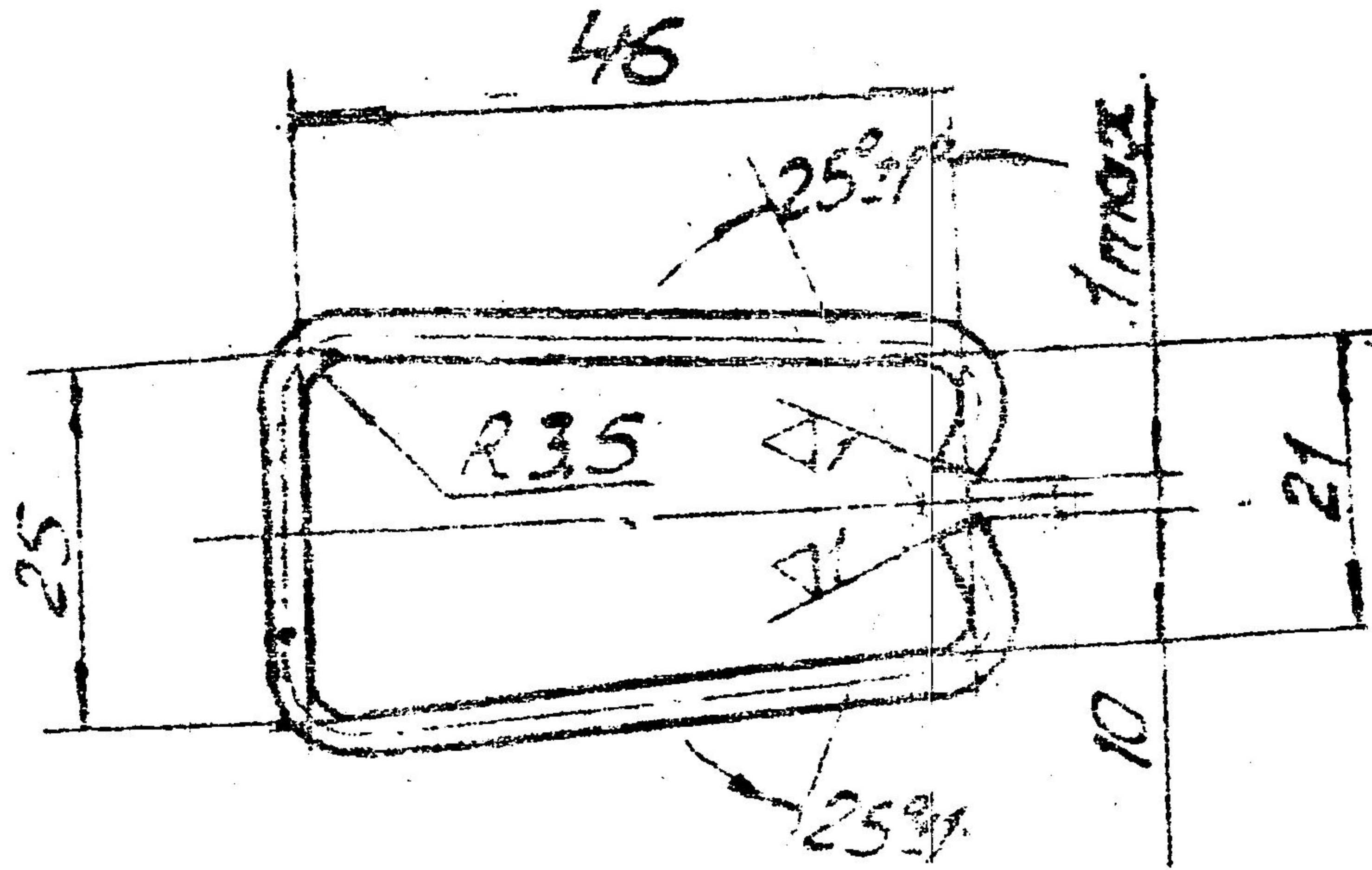
00605-1CV <i>du</i> 21-4-97	Ⓐ <i>Cv m</i>	EQ. MATERIAL ADDED. (2/97 N OF A)
DC (I) NO. & DATE	ISSUE	NATURE
A M E N D M E N T S		

APPROVED	765-94-124			
CHECKED				
CONTROLLERATE OF INSPECTION (ICV)	LEVER		WEIGHT	SCALE
			0,012	1:1
			SHT	SHTS
		BASIC GRADE OF MATERIAL STEEL CM 3, CH GOST 380-71	203 OF 289	

765-94-125

Unless otherwise specified.

View A
development



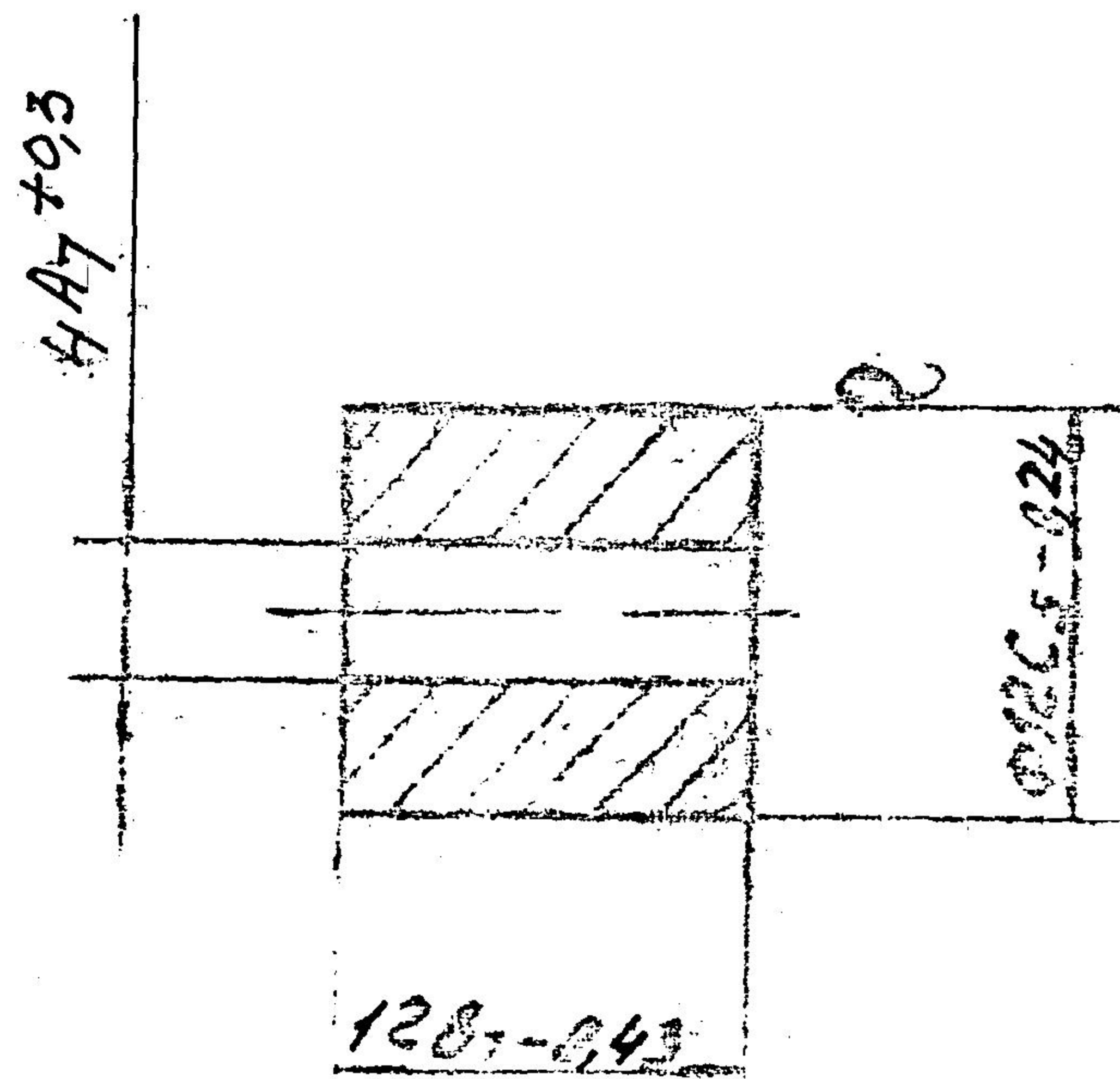
1. Blunt sharp edges.
2. Provide dimensions without deviations with accuracy of $\pm 1\text{mm}$.
3. Coating: Zinc plating, 24 microns thick, chromatization. Remove hydrogen embrittlement

Ⓐ EQ. MATL:- "Gde II TO IS: 4454-81.

APPROVED	C. RAO	765-94-125		125
CHECKED	P. PRASAD	CLIP	WEIGHT	SCALE
CONTROLLERATE OF INSPECTION (C.V.)			0,009	1-1
		SHT	SHTS	
		WIRE II-3 GOST 9389-75	204 OF 289	94

765-94-127

Unless otherwise specified.



Ⓐ EQ. MATERIAL :- STEEL TYPE 'O' Gde-I 20 C8 TO IS: 9550-80

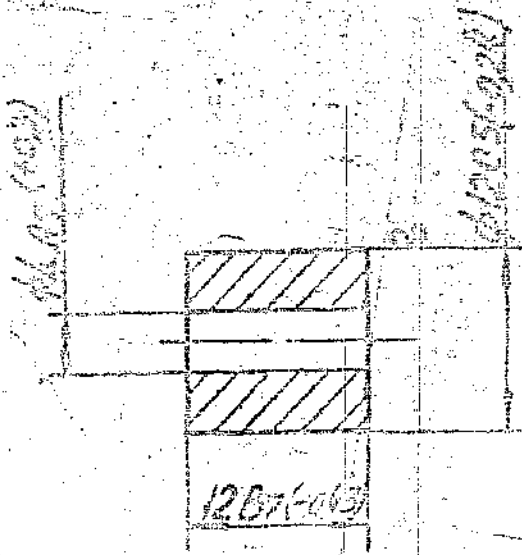
1. Blunt sharp edges.
2. Alternate material is steel cm3cn, steel cm3kn GOST 380-71 and 10,15,25,30,35,40 and 45 GOST 1050-74.
3. It is allowed to make from cermet ЖФР0.5-7 or ЖФР0.5-6.5 as per ТУ3-624-76.

00605-ICV <i>Sub</i> 21-4-97	Ⓐ <i>Crism</i>	EQ. MATERIAL ADDED. (2/97 N OF A)
DC (I) NO. & DATE	ISSUE	NATURE
A M E N D M E N T S		

APPROVED:	<i>C.P. RAD</i>	765-94-127		
CHECKED	<i>PRASAD</i>	BUSHING	WEIGHT	SCALE
CONTROLLERATE OF INSPECTION (ICV)			0,010	2:1
		STEEL 20 GOST 1050-74	SMT	SHTS
			205 of 289	

765-94-127 K

▽3(▽)



1. Other requirements are as per TY3-624-76.

APPROVED	<i>C. PRAD</i>	765-94-127 K		
CHECKED	<i>ARKHAR.</i>			
CONTROLLERATE OF INSPECTION (ILV)	BUSHING		WEIGHT	SCALE
			0.0074	2:1
			SMT	SHTS
Cermet KTP 0,5-7 TY3-624-76		94	206 of 289	