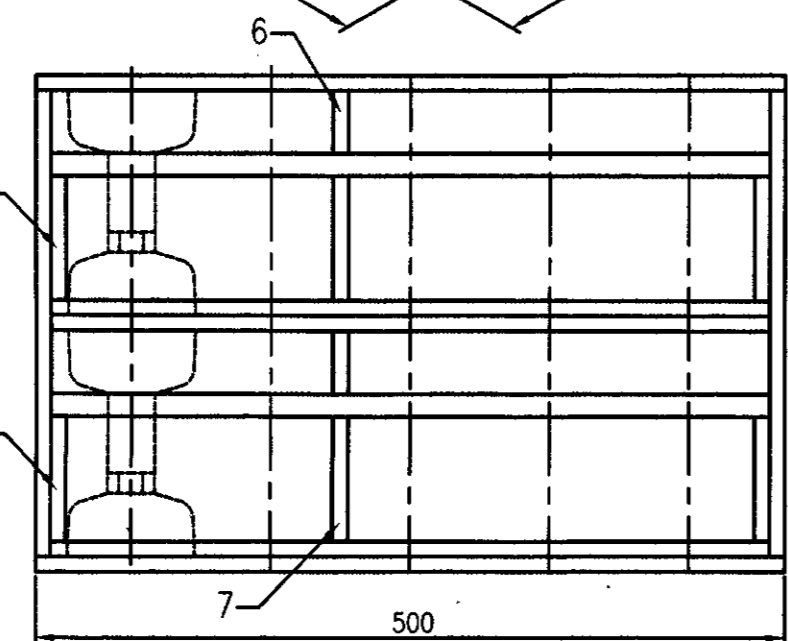
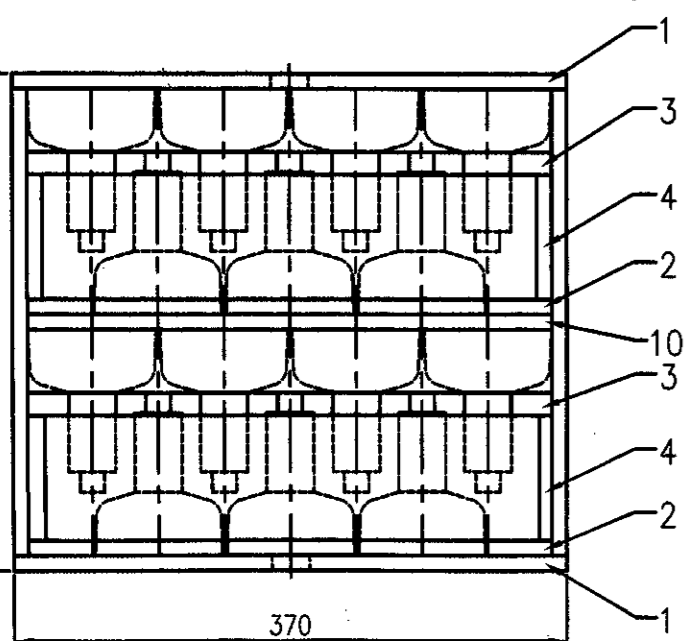
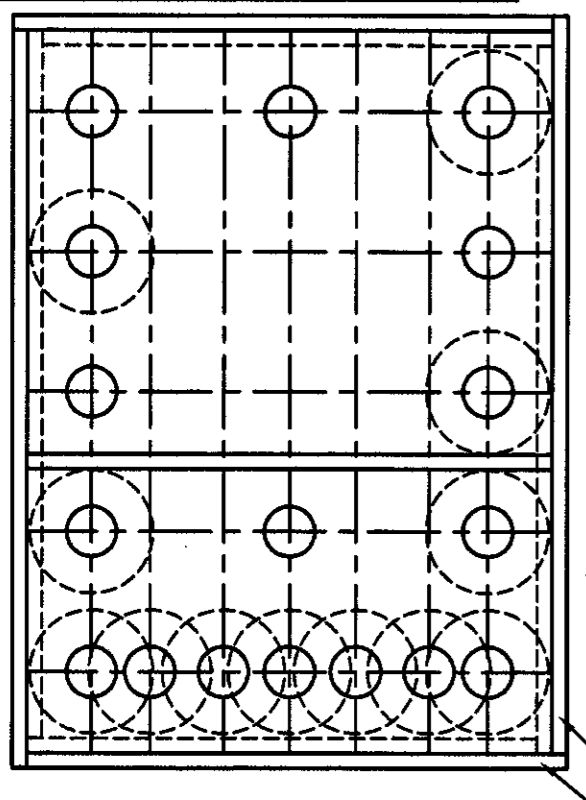
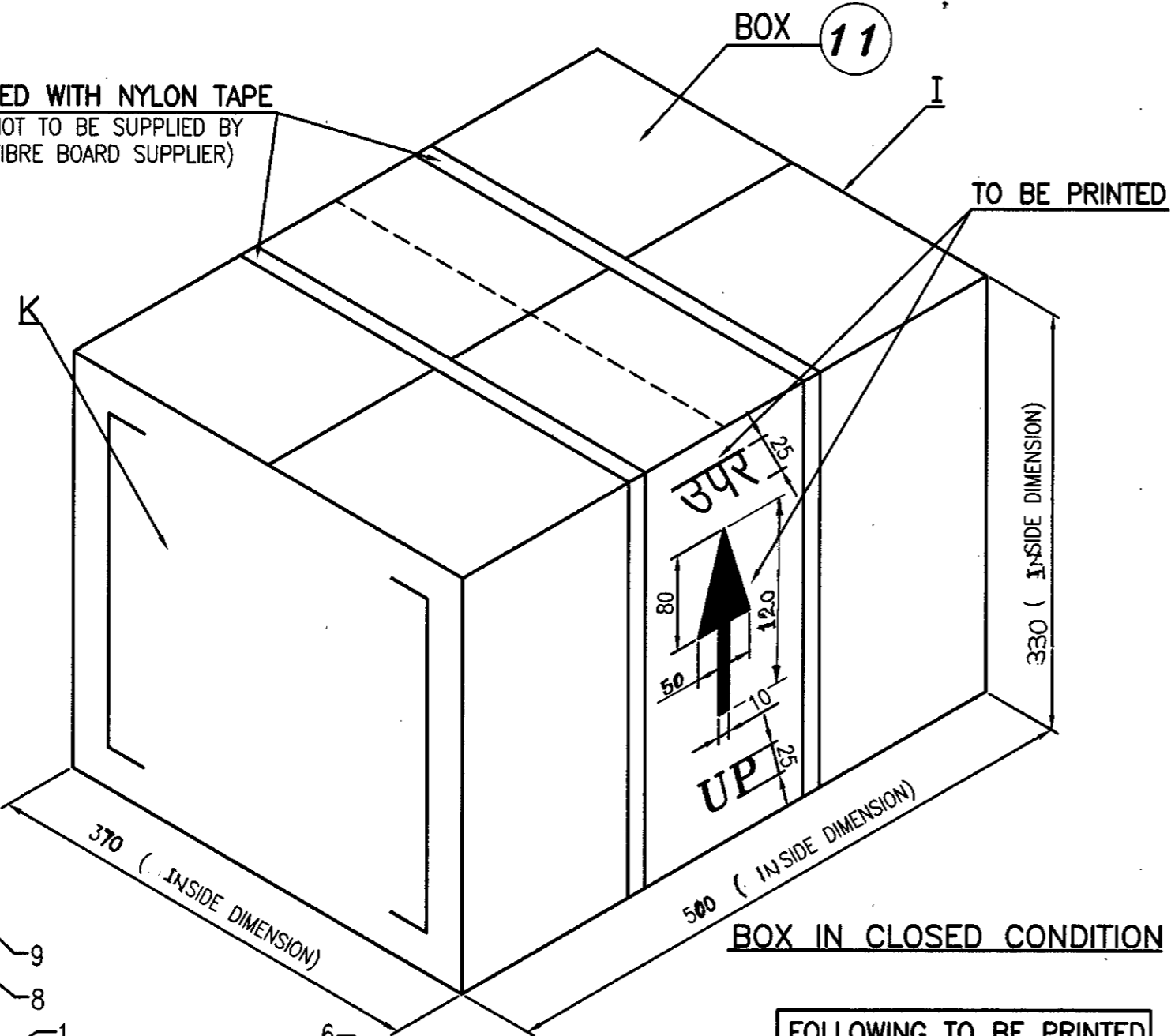


FOLLOWING TO BE PRINTED TO THE FACE MARKED 'K'

- सेवामें, महाप्रबंधक *
- टेल युनिट 1 ए *
- द्वारा, वरिष्ठ महाप्रबंधक *
- ऑ. फौ. अम्बाझरी मात्रा 70 लाट नं *
- DIM. '* = 25

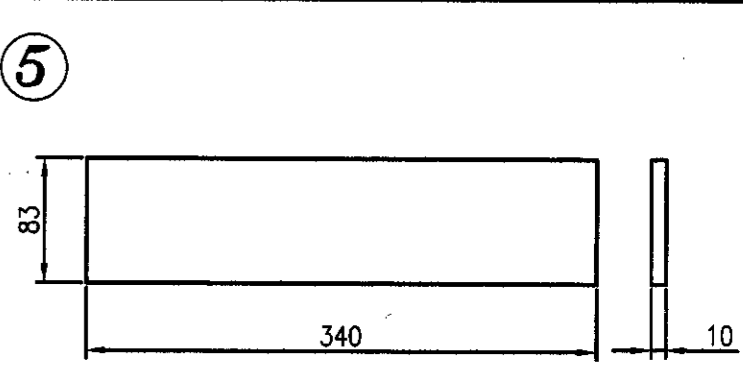
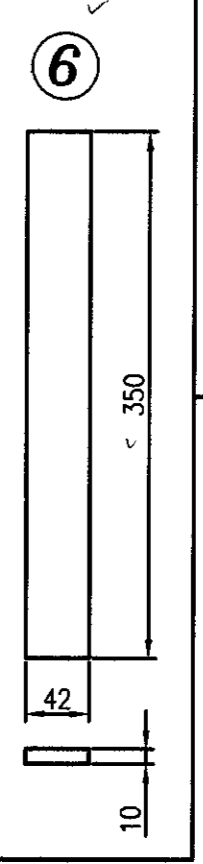
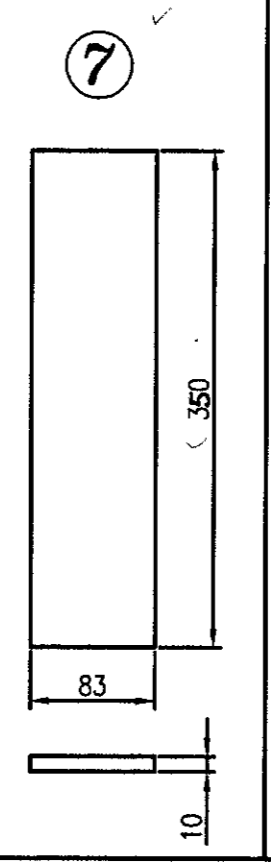
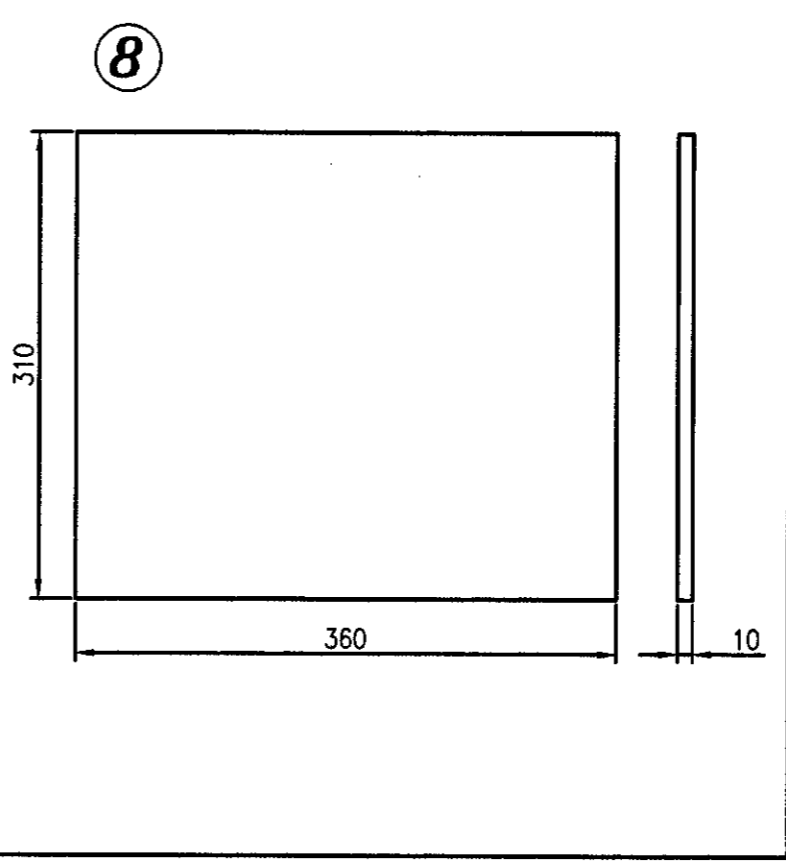
TIED WITH NYLON TAPE (NOT TO BE SUPPLIED BY FIBRE BOARD SUPPLIER)



FOLLOWING TO BE PRINTED IN 25mm LETTER HEIGHT TO THE FACE MARKED 'I'

TO, THE GM
TAIL UNIT 1A
FROM, THE SR.GM
ORD. FY. AMBAZHARI
QTY.70, LOT NO. _____

GENERAL ARRANGEMENT OF PACKING FITMENTS WITH COMPONENTS INSIDE THE BOX.



- NOTES:-
- MATERIAL FOR PART NOS. 1, 2 & 10
120 GSM KRAFT PAPER 9 PLYS, 4 WALL, NARROW FLUTING, 10mm THICKNESS & CROSS FLUTED.
 - MATERIAL FOR PART NO. 3
120 GSM KRAFT PAPER 9 PLYS, FOUR WALL, NARROW FLUTING, 10mm THICKNESS AND CROSS FLUTED i.e. ALTERNATE FLUTES SHOULD RUN ACCROSS EACH OTHER.
 - MATERIAL FOR PART NOS. 4, 5, 6, 7, 8 & 9
120 GSM KRAFT PAPER 9 PLYS, 4 WALL, NARROW AND VERTICAL FLUTING, 10mm THICKNESS.
 - MATERIAL FOR BOX PART NO. 11
150 GSM KRAFT PAPER 5 PLYS, DOUBLE WALL CONSTRUCTION NARROW FLUTING & 5mm THICK OF MIN. BRUSTING STRENGTH 10Kgf/cm²
 - ALL PARAMETERS ARE GOVERNED BY SPECN. IS:2771 (LATEST ISSUE) & SUBJECT TO FITMENT OF ALL THE PARTS.

REV	DATE	DESCRIPTION	SIGN	PART NO.	NOMENCLATURE	NO.OFF	MATERIAL	REMARKS
				11	BOX	1		
				10	MIDDLE SHOCK ABSORBER	1		
				9	SIDE SHOCK ABSORBER (FRONT/BACK)	2		
				8	SIDE SHOCK ABSORBER (LEFT/RIGHT)	2		
				7	PARTITION	2		
				6	PARTITION	2		
				5	SIDE SUPPORT (FRONT/BACK)	4		
				4	SIDE SUPPORT (LEFT/RIGHT)	4		
				3	MIDDLE GUIDE	2		
				2	BASE GUIDE	2		
				1	SHOCK ABSORBER (TOP / BOTTOM)	2		
PART LIST								
DIMENSIONS ARE IN mm.				MATERIAL- AS ABOVE				
THIRD ANGLE PROJECTION				NOMENCLATURE				
SCALE - 1:5				DRAWN M.D.Chaudhari				
CHECKED				DATE 12/11/09				
JWM/CDD				SIGN				
JGM/FS				DATE 12/11/09				
SCHEDULE NO.				STORE: 81mm BOMB				

REV	DATE	DESCRIPTION	SIGN
H/BB	09.06.15	In Nomenclature Packing Carton was Packing Box. Drg. adv. to 'H'	HOS/CDD
42/10	08/10	Total ht 330 was 340 in pt. 7 dim 350 was 330	JGM/FS
275	12.11.09	DRAWING REDRAWN & UPDATE. DRG.NO. ADV. TO 'F'	Sd/- JLM/FS
144	17.05.04	PRINTING MATTER IN ENGLISH ADDED. DRG.NO. ADV. TO 'E'	Sd/- JLM/FS
335	8.10.03	PRINTING IN HINDI WAS IN ENGLISH. DRG. NO. ADVANCED TO 'D'	Sd/- JLM/FS
277	6.8.03	BOX HEIGHT 350-5 WAS 350+5, DIM.330-5 WAS -2	Sd/- JLM/FS
414	24.10.02	IN PART 2 & 3 CENTRE DISTANCES 93 WERE 78, 82.5 & 92.5 ACCORDINGLY COMPLETE DRG. ALONGWITH PARTS MODIFIED.	Sd/- JWM/CDD
296	31.7.02	MATL.PART 3 GSM 120 WAS 80 GSM, HEIGHT OF BOX 370+5 WAS 360+10 IN PART 2 #33.5 & CENTRE DISTANCE ADDED	Sd/- JWM/CDD

आर्डेन्स फैक्टरी अम्बाझरी
ORDNANCE FACTORY AMBAZHARI
DRG.NO. **FS-2375'H'**
SHEET NO.- 1
NO OF SHEETS- 1
OPN. -
COMPT. TAIL UNIT 1A ASSY.