

918 X 01

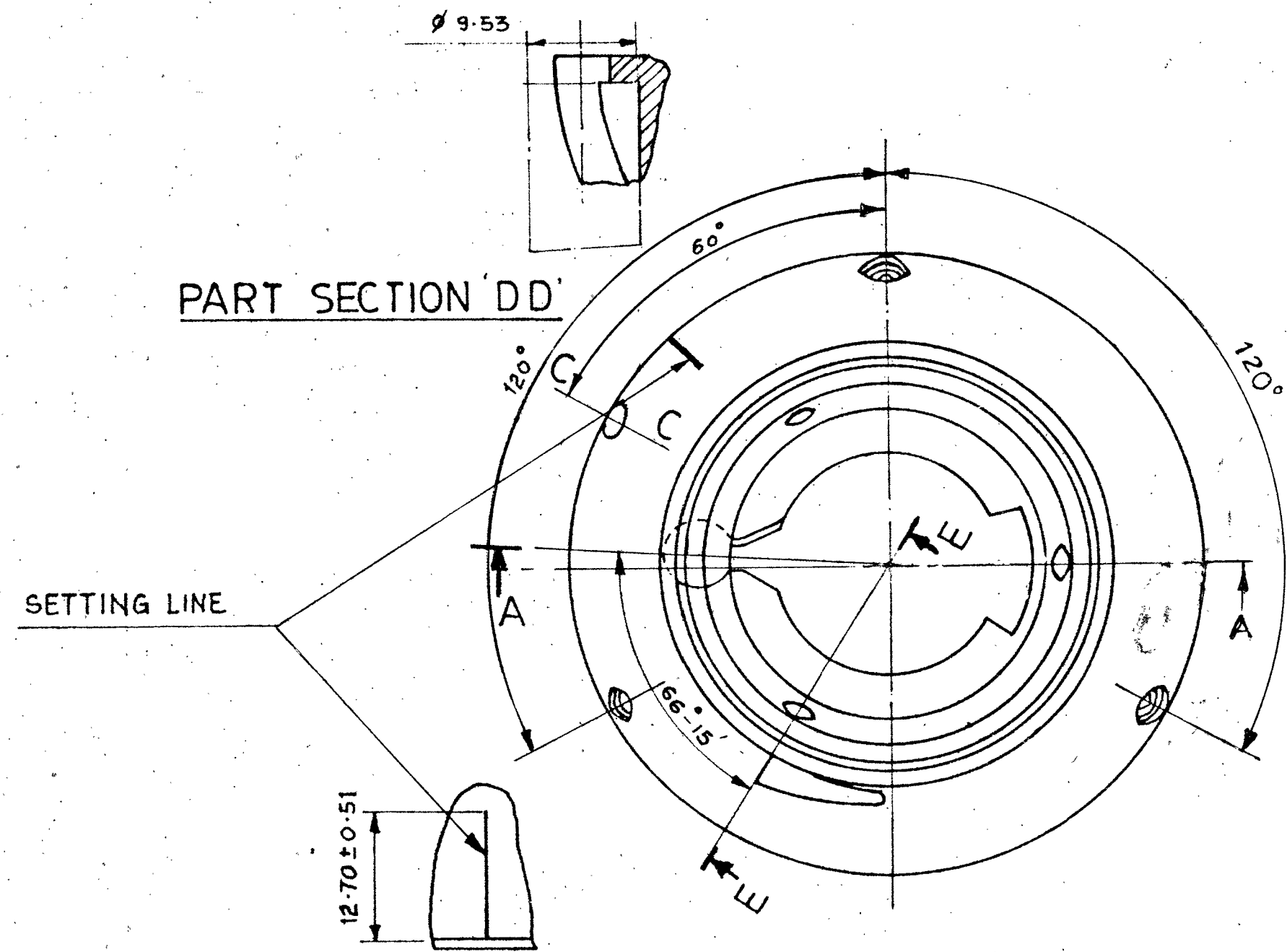
DRG CONVENTIONS CONFORM TO IS: 696  
DIMNS ARE IN mm

⊕ THIS IS THE MOST IMPORTANT CORNER  
AS IT IS THE WORKING EDGE AND MUST  
BE TRUE AND SHARP

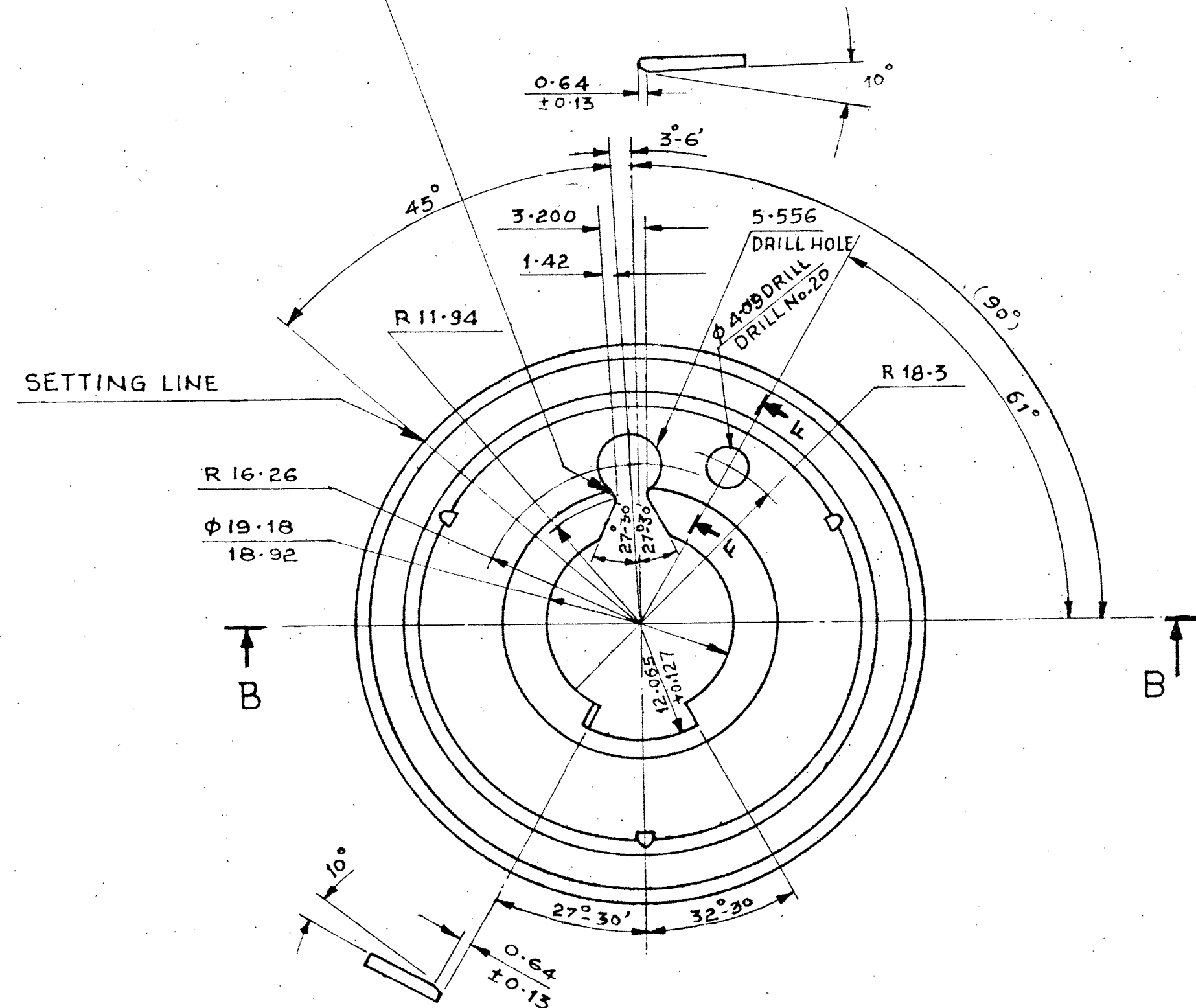
⊕ INSPECTOR'S REFERENCE ONLY

NOTE:-

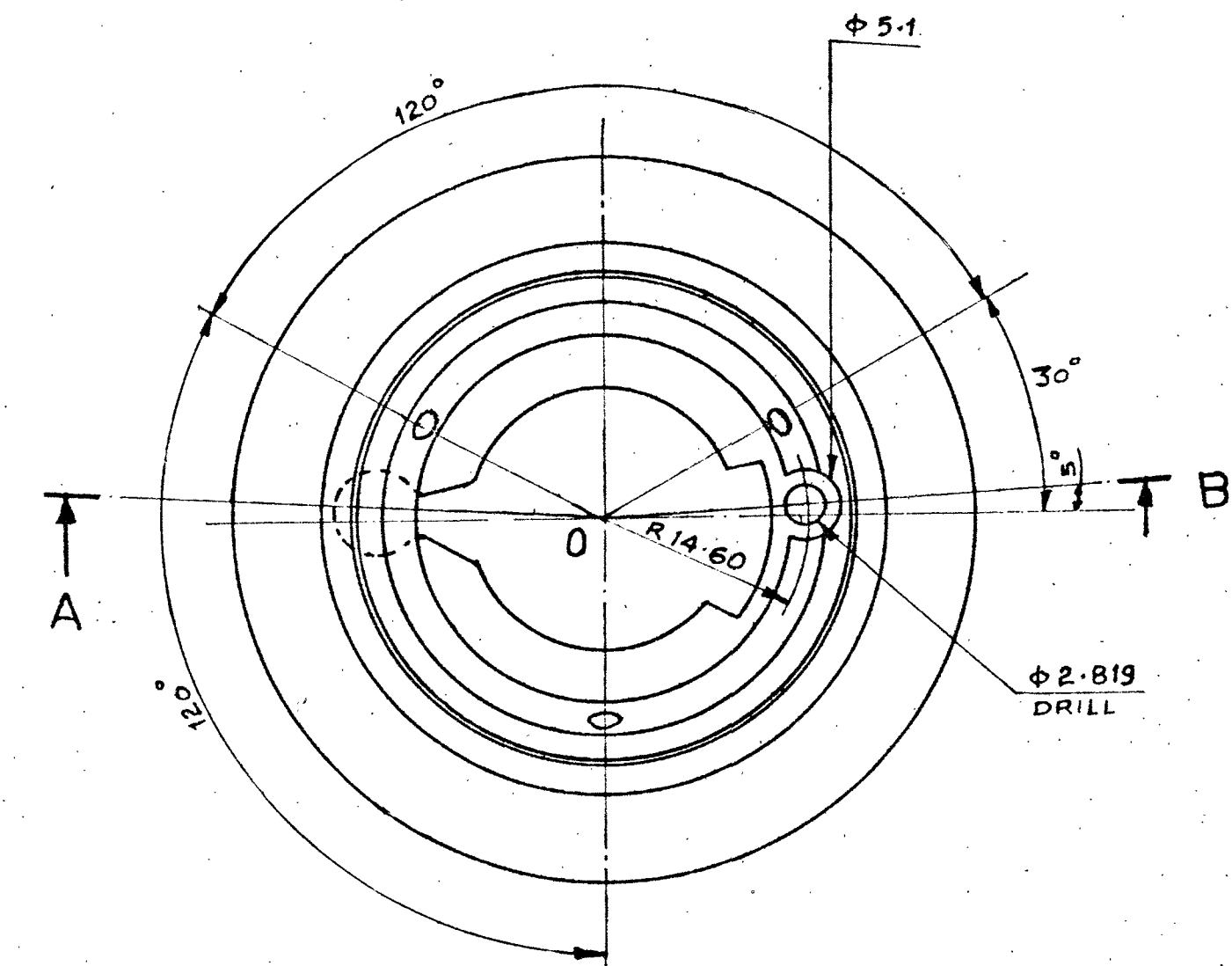
TOLERANCE ON UNTOLERANCED DIMENSIONS  
FOR ONE DECIMAL PLACE  $\pm 0.13$  FOR TWO OR MORE  
DECIMAL PLACES  $\pm 0.13$ . TOLERANCE ON  
UNTOLERANCED ANGLES FOR DEGREES  $\pm 30'$   
FOR DEGREES AND MINUTES  $\pm 5'$



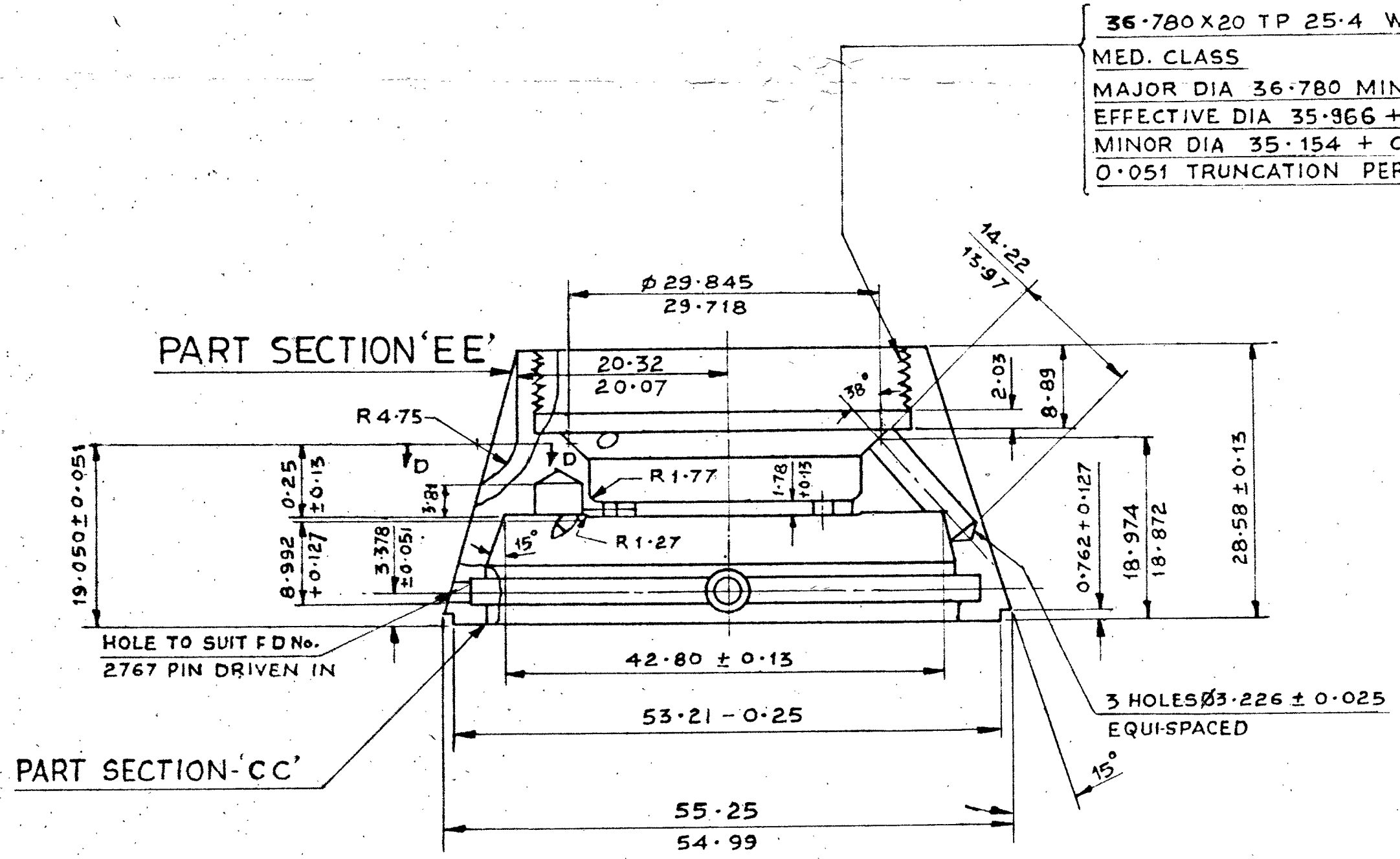
DETAIL OF SETTING LINE



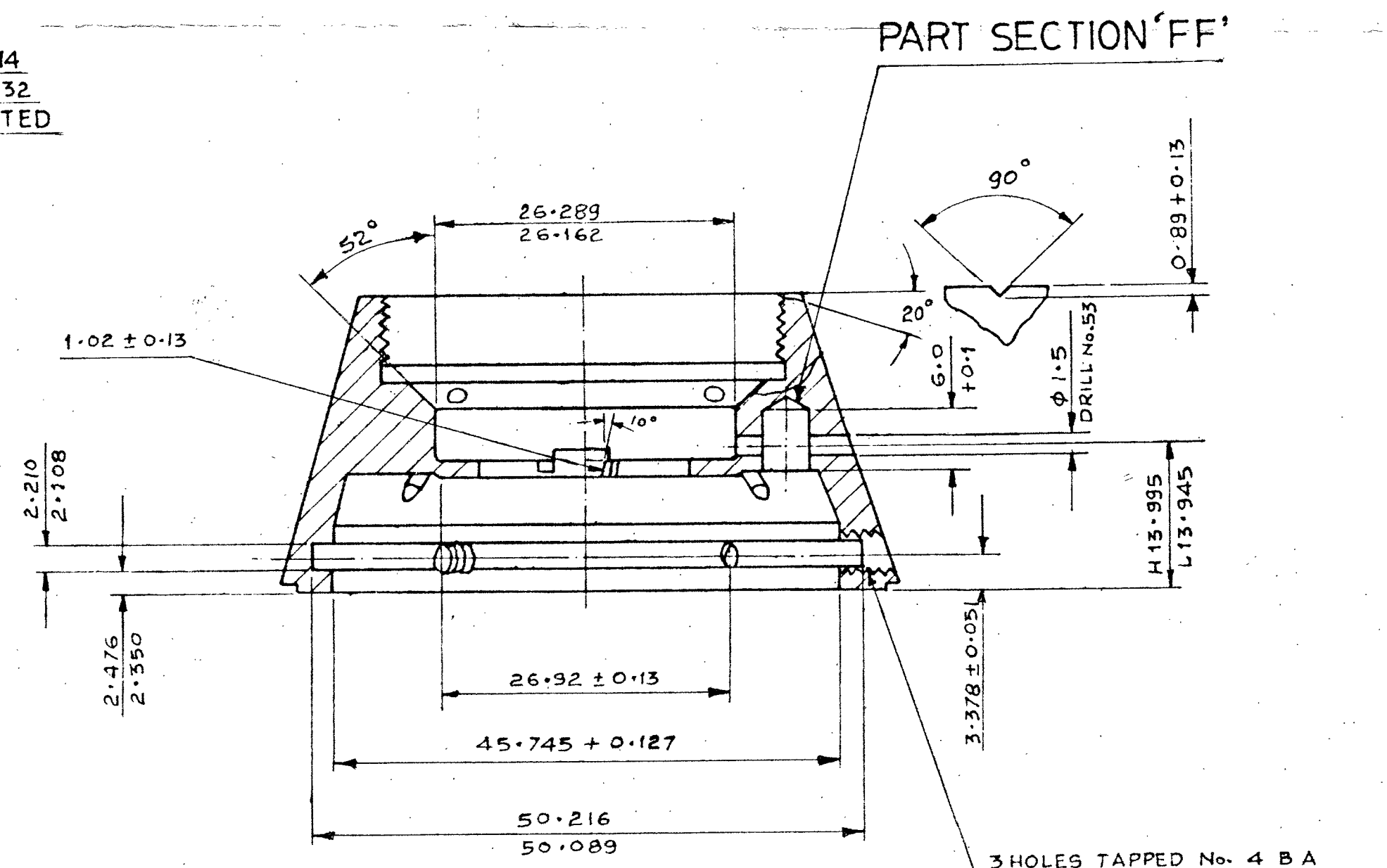
INVERTED PLAN



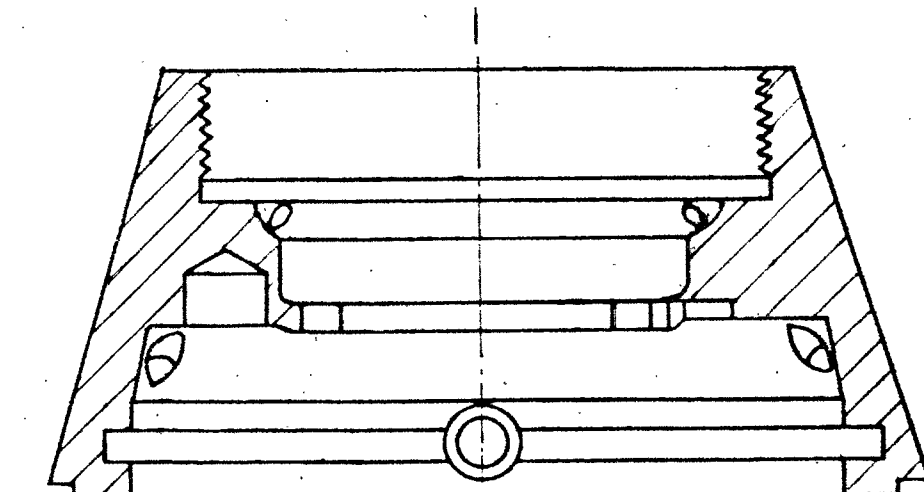
SECTION AOB



SECTION 'AA'



SECTION 'BB'



PART SECTION 'FF'

ALTERNATIVE METHOD OF MANUFACTURE  
INCORPORATING HOLE FOR TRIGGER ARMING.

36.780 X 20 TP 25.4 WHIT FORM  
MED. CLASS  
MAJOR DIA 36.780 MIN  
EFFECTIVE DIA 35.966 + 0.14  
MINOR DIA 35.154 + 0.432  
0.051 TRUNCATION PERMITTED

1-8-03		SCANNED WITHOUT CHANGE				DRN.	CHD	TRD.	COMP.	ASSY. DRG :- 1QX 81 A
27.6.87	DCI. 34168-A	DS CAT NO ADDED.				CD	PASSED	SCALE 2:1		DESIGN AUTHORITY
22.5.87	DCI. 34136-A	ALTERNATIVE MATL. ADDED.				APPROVED		EST. MASS:-		ARDE PUNE -21
13.7.84		DRG SEALED PROVISIONALLY.						GAUGE SCHED		
R No.	DATE	REVISION	ZONE	AHSP	D.O.	MATERIAL: BRASS TO SPEC BS. 2874-Cz 121 OR BS 2872 CZ 122.		DATE: 14-5-84		
				SIGN		PROTECTIVE FINISH.				DESIGNER'S REF.
										ARDE 2014
										PART No
										1QX 816
										D.S. CAT. No 1390-000525
										AHSP - C.I (A) KIRKEE

**DOME**