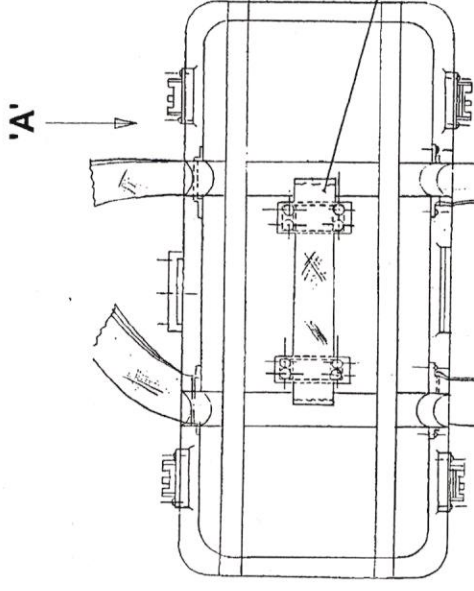


- IDRE 379/9 2
(END TO BE CLOSED TO FORM HINGE)
- IRDE 379/15 2
- IRDE 328/1 2
- IRDE 379/16 2
- IRDE 328/4 2
- IRDE 328/3 2

PART VIEW IN DIRECTION OF ARROW 'A'

STRAP WEB COTTON VOD OG. COLOUR 38.0 WIDE x 2.5 THICK x 225.0 LG. 1

- STRAP WEB COTTON VOD OG. COLOUR 38.0 WIDE x 2.5 THICK x 1500.0 LG. 2
- BUCKLE BRASS, QUICK RELEASE 38.0 mm 2
- TIP, BRASS 38.0 mm 2
- EYE LET, BRASS 4

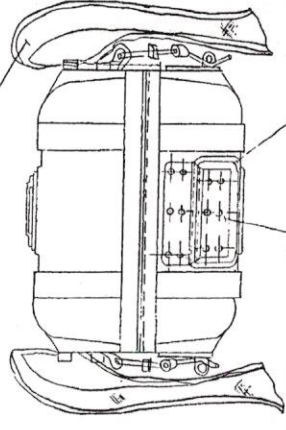


- IRDE 2003/2 1
- RIVET SNAP HEAD STEEL, $\phi 2.0 \times 7.0$, IS:2998 42
- RIVET SNAP HEAD STEEL, $\phi 2.5 \times 14.0$, IS:2998 08
- PUNCHED WASHER, M2.2, IS:2016 BRASS 42
- PUNCHED WASHER, M2.5, IS:2016 BRASS 08

- CWC-247/1 1
(TO BE GLUED WITH LID)
- 'O' RING OF SYNTHETIC RUBBER
NITRILE VARIETY IRHD 51-60
 $\phi 5.1 \times 1380$ LG 1
- CWC-247/2 1
(TO BE GLUED WITH LID)

CWC-247/4 1
(TO BE RIVETED / GLUED CENTRALLY AS SHOWN)

IRDE 1613/8 10



- IRDE 1613/5 2
(OR BEST COMMERCIAL HANDLES)
- IRDE 1613/6 2

CWC-247/3 1
(TO BE RIVETED / GLUED CENTRALLY AS SHOWN)

- IRDE 2003/1 1
- RIVET SNAP HEAD STEEL, $\phi 2.5 \times 8.0$, IS:2998 16
- RIVET SNAP HEAD STEEL, $\phi 2.0 \times 8.0$, IS:2998 24
- PUNCHED WASHER, M2.5, IS:2016 BRASS 16
- PUNCHED WASHER, M2.2, IS:2016 BRASS 24

CONTROLLED COPY
Copy No.
Date of Issue 19.11.16

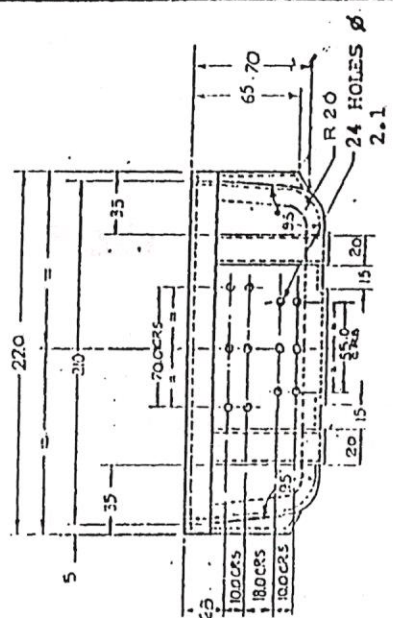
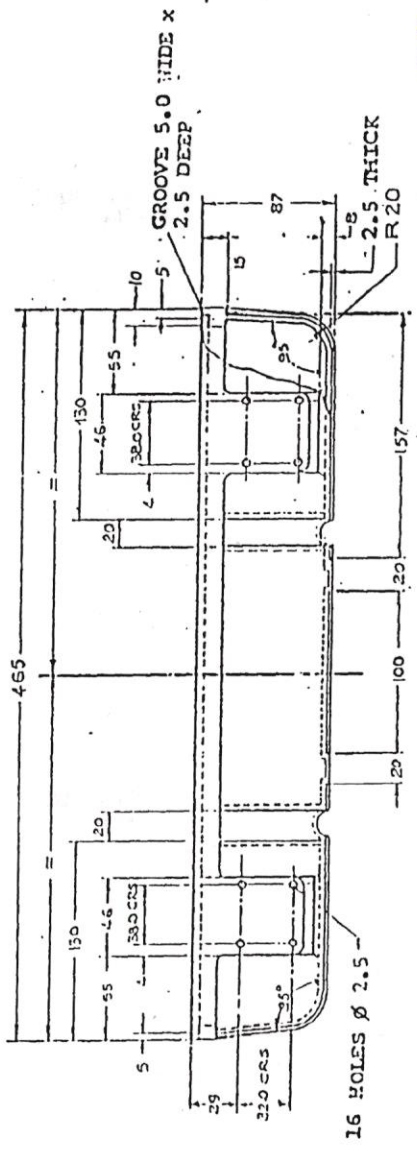
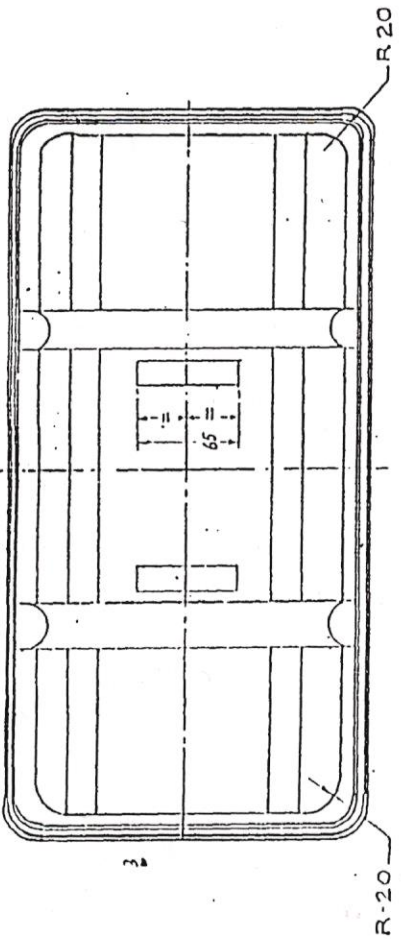
ORDNANCE FACTORY DEHRADUN	DR.- R.K. SHARMA		DT.- 18-11-2016	SCALE- NTS
	TR.	CH.	MATL.	TREAT
APPROVED (AJAY SINGH) HOS/DO.		(T.KHAWAR) J.G.M/P&P	SHTS.- 1	SHT. NO.- 1
CASE CARRYING PASSIVE NIGHT VISION BINOCULAR (LW) M2			DRAWING NO.- CWC-247	
AMENDMENTS OFD/DO/002				

9

DC(1):-5170-I, 5645-1, 5839-I, 6759-I

REDUCED DRG. PREPARED AT COA (I) DEHRA DUN
 PREPARED BY :
 CHECKED BY :
 DATE : 22-12-92

AMENDMENTS	CHD SIG	DATE
D.C. 5645-I, UPDATED & REDUCED DRG. SEALED IN SUPERSESSION OF EXISTING ONE.		23.2.93
(S) D.C. 5839-I. FINISH AMENDED.		8.4.94
D.C. 6759-I. CAT/PL. No. ADDED		10.8.05



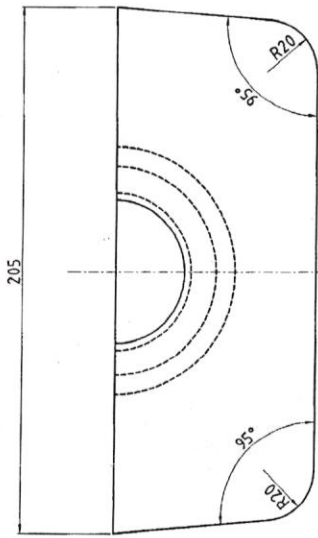
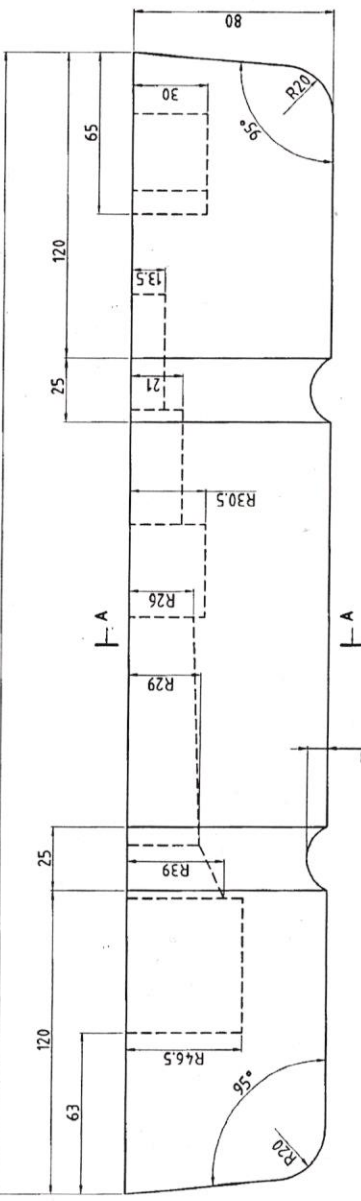
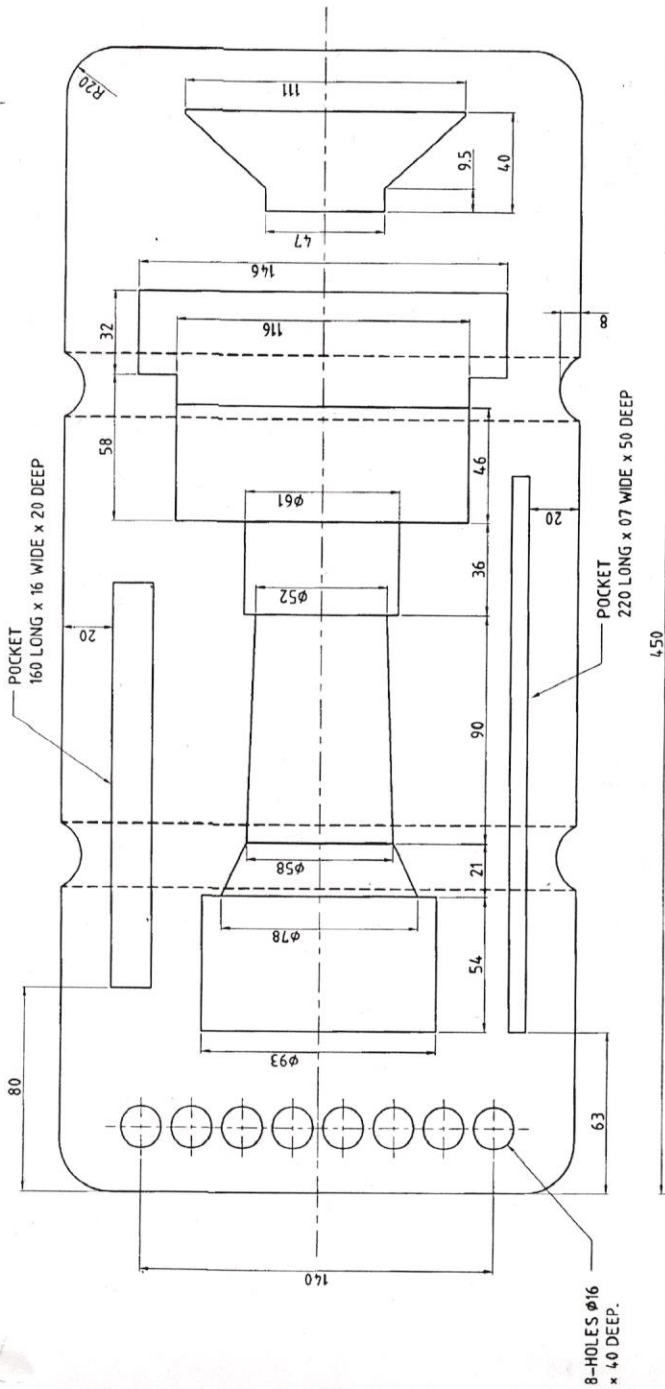
CONTROLLED COPY
 Copy No. 17116
 Date of Issue 17.11.02

FINISH:-
 APPLY PRIMER TO IS: 2074-1962 AND THEN PAINTED (ISC 294 TO IS: 5-1978) OF IS: 8982-1978 EXCEPT BEARING SURFACES.

FOR EXPLANATION OF DIMENSIONING ETC, SEE COA (I) GUIDE No 001-1992.	DRN	self	APPROVED
THIRD ANGLE PROJECTION DIMENSIONS ARE IN MM	TCD	self	FOR self-
	CHD	self	CONTROLLER
	CHD		COA (I) DDUN
	CHD		DATE: 07-10-86
MATL & SPEC:-	USED		
FIBRE GLASS REINFORCED PLASTIC (BEST COMMERCIAL QUALITY)	ON		
	BASED ON		
	CAT/PT No		
			Z7/8115-002306
FINISH & SPEC:-	DRG No.		IRDE 2003/1
	SCALE		
			SH OF

BOX

TITLE:-



SEC. AT 'A-A'

CONTROLLED COPY

Copy No.
Date of Issue ... 19-11-16

MATL. :- EXPANDED POLYTHELENE FOAM
(DENSITY 0.09+0.01 g/cm³, BLACK/GREY)
FINISH :- CLEAN.

ALL DIMENSIONS ARE IN MM.

ORDNANCE FACTORY DEHRADUN	DR. :- R.K. SHARMA	DI. :- 18.11.2016	SCALE :- N.T.S.
	TR. :-	MATL. AS ABOVE	TREAT AS ABOVE
	CH. :-	SHTS. :- 1	SHT. NO. :- 1
	APPROVED. (AJA) (SINGH) HOS./D.O.		AMENDMENTS. OFD/DO/002.
			DRAWING No. :- CWC-247/2
CASE CARRYING PASSIVE NIGHT VISION BINOCULAR (LIGHT WEIGHT) M2 PAD LOWER			

ORDNANCE FACTORY, DEHRADUN

CAT/PT. NO.		NOMENCLATURE		SCHEDULE OF PARTS COMPRISING :-		DRAWING NO.	
/STORE DRG.NO.		CASE CARRYING PASSIVE NIGHT VISION		BINOCULAR (L/W) M2		CWC-247	
		BOX		1	IRDE-2003/1		
		RIVET SNAP HD. STEEL $\phi 2.5 \times 8$, IS:2998		16			
		RIVET SNAP HD. STEEL $\phi 2.0 \times 8$, IS:2998		24			
		PUNCHED WASHER M2.5, IS:2016 BRASS		16			
		PUNCHED WASHER M2.2, IS:2016 BRASS		24			
		LID		1	IRDE-2003/2		
		RIVET SNAP HD. STEEL $\phi 2.0 \times 7$, IS:2998		42			
		RIVET SNAP HD. STEEL $\phi 2.5 \times 14$, IS:2998		8			
		PUNCHED WASHER M2.2, IS:2016 BRASS		42			
		PUNCHED WASHER M2.5, IS:2016 BRASS		8			
		PAD UPPER		1	CWC-247/1		
		PAD LOWER		1	CWC-247/2		
		NAME PLATE		1	CWC-247/3		
		NAME PLATE		1	CWC-247/4		
		HANDLE		2	IRDE-1613/5		
		PLATE		2	IRDE-1613/6		
		CLIP		10	IRDE-1613/8		
		FASTENER SET TURN LOCK		2	IRDE-328		
		STRAP WEB COTTON VOD OG. COLOUR		1			
		38 WIDE \times 2.5 THICK \times 225, LONG.					
		STRAP WEB COTTON VOD OG. COLOUR		2			
		38 WIDE \times 2.5 THICK \times 1500 LONG.					
		BUCKLE, BRASS, QUICK-RELEASE, 38 mm.		2			
		TIP, BRASS 38 mm.		2			
		EYE LET, BRASS		4			
		'O' RING OF SYNTHETIC RUBBER NITRILE		1			
		VARIETY IRHD 51 TO 60 $\phi 5.1 \times 1380$ LG.					
DR - R.K.SHARMA		DT.- 18/11/2016		SCALE		SHT. No.-1	
TR-		CH-		SHEETS.-2		DRAWING NO.	
APPROVED		(T.KHATTER) Jt.GM/P&P		CWC-247		AMENDMENTS	
HOS/D.O. (AJAY SINGH)		OFD/DO/002					

DATE OF ISSUE / S.T.K.

6

DRAWING No. - <u>CWC-247/3</u>		HOS/DO. (AJAY SINGH) <i>2</i>		OFD/DO/002
SHEETS-1		APPROVED		AMENDMENTS.
SHTS.-1		CH.		
MATERIAL AS ABOVE		TR.-		
TREAT.		DR.- R.K.SHARMA		
SCALE- 1:1		DIMENSIONS ARE IN M/M.		

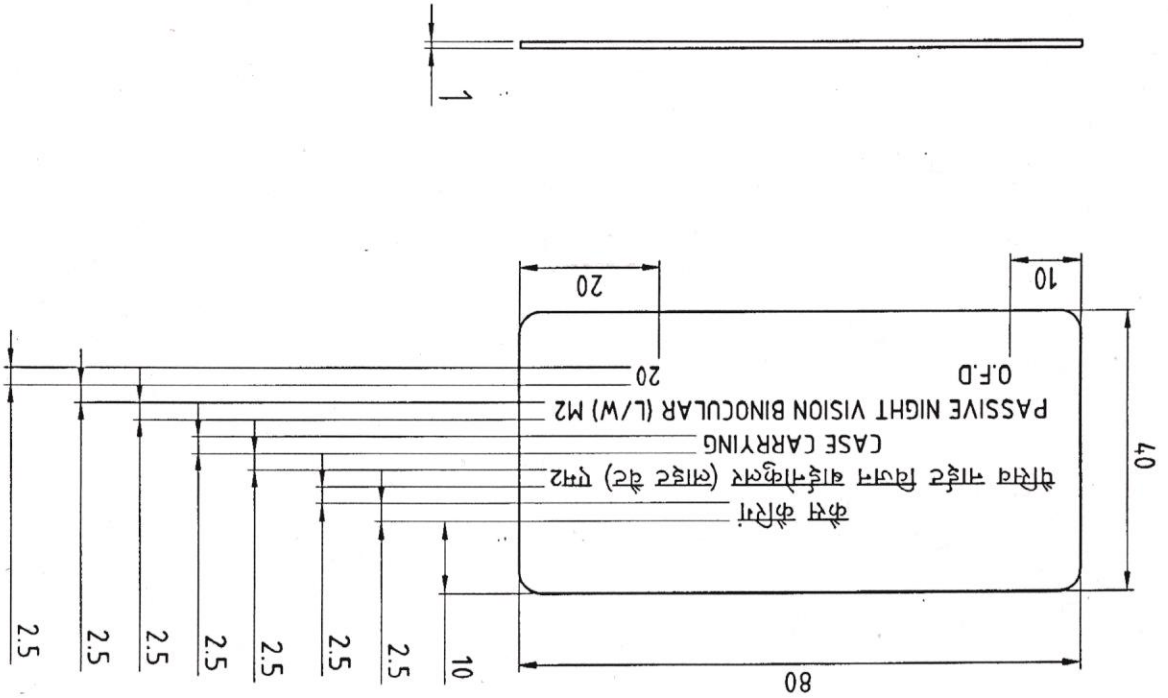
IMPORTANT DIMENSIONS MARKED THUS ●
 INFORMATION MARKED THUS | TO BE MARKED ON

FINISH :- CLEAN

MATERIAL :- AL. ALLOY SHEET, 19000-H2 TO IS:737-1986.

CONTROLLED COPY
 Copy No.
 Date of Issue 19.11.16

NOTE:- LETTERS AND FIGURES TO BE PHOTO-ETCHED WITH
 WHITE SUITABLY AND BACKGROUND TO BE ANODISED BLACK.



CASE CARRYING
PASSIVE NIGHT VISION BINOCULAR (LIGHT WEIGHT) M2
NAME PLATE

(8)

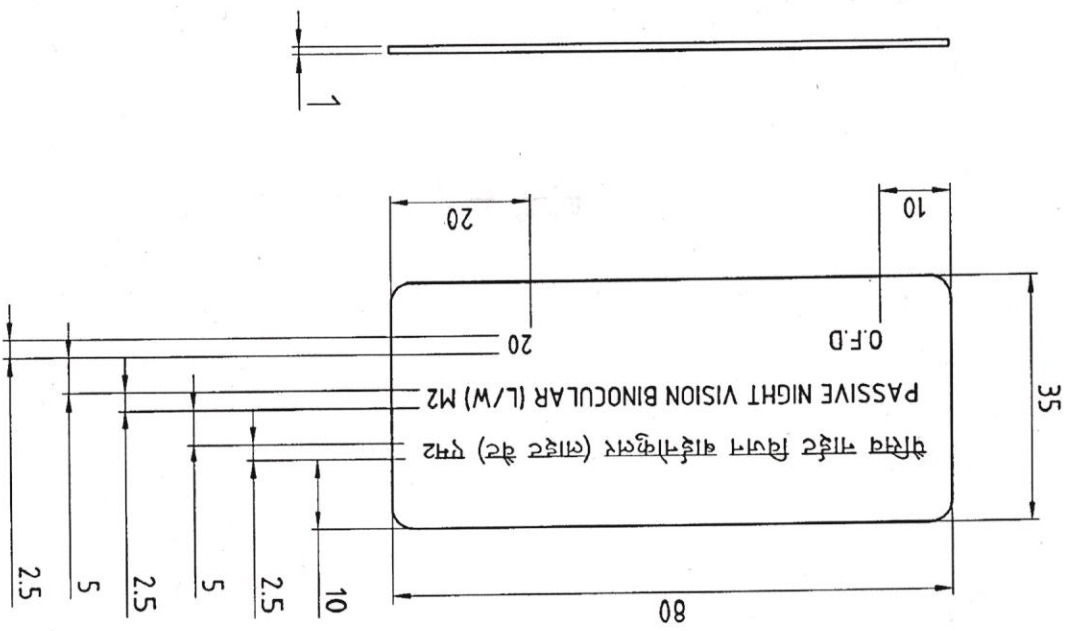
ORDNANCE FACTORY, DEHRADUN.

DRAWING No. - <u>CWC-247/4</u>		AMENDMENTS.	
DT. 18.11.2016		OFD/DD/002	
SCALE - 1:1		HOS/DD. (AJAY SINGH) (T.KHATTAR) Jt.GM/P&P	
MATERIAL		APPROVED	
TREAT.		CH.	
AS ABOVE		TR.-	
AS ABOVE		DR.- R.K.SHARMA	

DIMENSIONS ARE IN M/M.
 IMPORTANT DIMENSIONS MARKED THUS *
 INFORMATION MARKED THUS | TO BE MARKED ON

MATL. :- AL. ALLOY SHEET, 19000-H2 TO IS:737-1986
 FINISH :- CLEAN
 CONTROLLED COPY
 Copy No.
 Date of Issue - 19-11-16

NOTE:- LETTERS AND FIGURES TO BE PHOTO-ETCHED WITH
 WHITE SUITABLY AND BACKGROUND TO BE ANODISED BLACK.



CASE CARRYING
PASSIVE NIGHT VISION BINOCULAR (LIGHT WEIGHT) M2
NAME PLATE

9

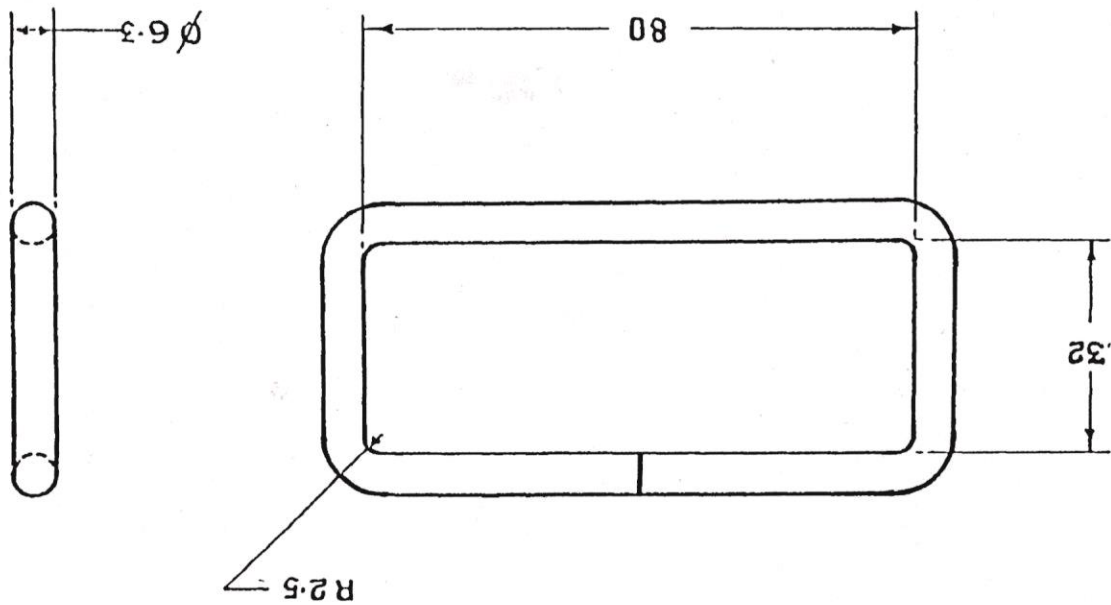
D. C. (1)-1063-I(P); 4615-I, 5774-I, 5839-I, 6200-I, 6772-I.

POLYESTER NEGATIVE PREPARED AT COA(I) D DUN
 PREPARED BY: *[Signature]*
 CHECKED BY: *[Signature]* DATE: 7/18/95

HANDLE, BAIL

TITLE		SYN		AMENDMENTS		DRN		TRCD		CHKD		CHKD		USED		BASED		CAT		FINISH		MATERIAL SPECN	
D.C. - 6772-I. NEW COPY SEALED		IN SUPERSESSION OF DILAPIDATED ONE.		D.C. - 6200-I.		NOM. AMEND. CAT/PTN. ADDED.		FINISH AMENDED.		D.C. - 5839-I.		D.C. 5774-I POLY NEG. PREP. & NEW COPY SEALED		D.C. (I) - 4615-I.		D.C. (I) - 1063-I(P).		D.C. (I) - 1063-I(P).		D.C. (I) - 1063-I(P).		D.C. (I) - 1063-I(P).	
D.C. (I) - 1063-I(P).		D.C. (I) - 1063-I(P).		D.C. (I) - 1063-I(P).		D.C. (I) - 1063-I(P).		D.C. (I) - 1063-I(P).		D.C. (I) - 1063-I(P).		D.C. (I) - 1063-I(P).		D.C. (I) - 1063-I(P).		D.C. (I) - 1063-I(P).		D.C. (I) - 1063-I(P).		D.C. (I) - 1063-I(P).		D.C. (I) - 1063-I(P).	
D.C. (I) - 1063-I(P).		D.C. (I) - 1063-I(P).		D.C. (I) - 1063-I(P).		D.C. (I) - 1063-I(P).		D.C. (I) - 1063-I(P).		D.C. (I) - 1063-I(P).		D.C. (I) - 1063-I(P).		D.C. (I) - 1063-I(P).		D.C. (I) - 1063-I(P).		D.C. (I) - 1063-I(P).		D.C. (I) - 1063-I(P).		D.C. (I) - 1063-I(P).	

CONTROLLED COPY
 Copy No. 19-11-16
 Date of Issue 19-11-16



FOR EXPLANATION OF DIMENSIONING ETC. SEE COA(I) GUIDE NO. 001-1992
 THIRD ANGLE PROJECTION
 DIMENSIONS ARE IN MILLIMETRES.

16

D C (1) - 665-I(P), 4615-I, 5584-I 5774-I, 5839-I, 5903-I.

POLYESTER NEGATIVE PREPARED AT COA(1) D DUN
 PREPARED BY *[Signature]*
 CHECKED BY *[Signature]* DATE - 7/18/93

TITLE (c)		CLIP RETAINING	
FINISH (b)		APPLY PRIMER TO IS 2074-1962 AND THE PAINTED (SC 29) TO IS 5-1978) OF IS 8982-1978 EXCEPT BEARING SURFACES	
MATERIAL SPEC (c)		M S, IS 1079-B-4615 - 1988, GRADE O'	
SYM	AMENDMENTS		
	CHKD	SIG	DATE
			USED
			BASED ON
			ON
			DRG (1) - 1063-I-P
			DRG SEALD
			D C (1) - 4615-J
			DRG SEALD
			MATL SPECN AMENDED
			(D C (1) - 5584-I
			SEALED IN REPLACEMENT OF EXISTING ONE
			D C 5774-I POLY NEG PREP & NEW COPY
			FINISH AMENDED
			(D C (1) - 5839-I
			2 CAT/PT. NO. ADDED
			(D C - 5903 I NOM AMENDED
			8494
			TRCD
			91093
			CHKD
			22892
			CHKD
			25882
			CHKD
			141281
			DATE
			011
			USED
			011
			DATE
			1880
			APPROVED
			for DIRECTOR
			INDEX
			DATE
			1880
			APPROVED
			for DIRECTOR
			INDEX
			DATE
			1880
			APPROVED
			for DIRECTOR
			INDEX
			DATE
			1880
			APPROVED
			for DIRECTOR
			INDEX
			DATE
			1880
			APPROVED
			for DIRECTOR
			INDEX
			DATE
			1880
			APPROVED
			for DIRECTOR
			INDEX
			DATE
			1880
			APPROVED
			for DIRECTOR
			INDEX
			DATE
			1880
			APPROVED
			for DIRECTOR
			INDEX
			DATE
			1880
			APPROVED
			for DIRECTOR
			INDEX
			DATE
			1880
			APPROVED
			for DIRECTOR
			INDEX
			DATE
			1880
			APPROVED
			for DIRECTOR
			INDEX
			DATE
			1880
			APPROVED
			for DIRECTOR
			INDEX
			DATE
			1880
			APPROVED
			for DIRECTOR
			INDEX
			DATE
			1880
			APPROVED
			for DIRECTOR
			INDEX
			DATE
			1880
			APPROVED
			for DIRECTOR
			INDEX
			DATE
			1880
			APPROVED
			for DIRECTOR
			INDEX
			DATE
			1880
			APPROVED
			for DIRECTOR
			INDEX
			DATE
			1880
			APPROVED
			for DIRECTOR
			INDEX
			DATE
			1880
			APPROVED
			for DIRECTOR
			INDEX
			DATE
			1880
			APPROVED
			for DIRECTOR
			INDEX
			DATE
			1880
			APPROVED
			for DIRECTOR
			INDEX
			DATE
			1880
			APPROVED
			for DIRECTOR
			INDEX
			DATE
			1880
			APPROVED
			for DIRECTOR
			INDEX
			DATE
			1880
			APPROVED
			for DIRECTOR
			INDEX
			DATE
			1880
			APPROVED
			for DIRECTOR
			INDEX
			DATE
			1880
			APPROVED
			for DIRECTOR
			INDEX
			DATE
			1880
			APPROVED
			for DIRECTOR
			INDEX
			DATE
			1880
			APPROVED
			for DIRECTOR
			INDEX
			DATE
			1880
			APPROVED
			for DIRECTOR
			INDEX
			DATE
			1880
			APPROVED
			for DIRECTOR
			INDEX
			DATE
			1880
			APPROVED
			for DIRECTOR
			INDEX
			DATE
			1880
			APPROVED
			for DIRECTOR
			INDEX
			DATE
			1880
			APPROVED
			for DIRECTOR
			INDEX
			DATE
			1880
			APPROVED
			for DIRECTOR
			INDEX
			DATE
			1880
			APPROVED
			for DIRECTOR
			INDEX
			DATE
			1880
			APPROVED
			for DIRECTOR
			INDEX
			DATE
			1880
			APPROVED
			for DIRECTOR
			INDEX
			DATE
			1880
			APPROVED
			for DIRECTOR
			INDEX
			DATE
			1880
			APPROVED
			for DIRECTOR
			INDEX
			DATE
			1880
			APPROVED
			for DIRECTOR
			INDEX
			DATE
			1880
			APPROVED
			for DIRECTOR
			INDEX
			DATE
			1880
			APPROVED
			for DIRECTOR
			INDEX
			DATE
			1880
			APPROVED
			for DIRECTOR
			INDEX
			DATE
			1880
			APPROVED
			for DIRECTOR
			INDEX
			DATE
			1880
			APPROVED
			for DIRECTOR
			INDEX
			DATE
			1880
			APPROVED
			for DIRECTOR
			INDEX
			DATE
			1880
			APPROVED
			for DIRECTOR
			INDEX
			DATE
			1880
			APPROVED
			for DIRECTOR
			INDEX
			DATE
			1880
			APPROVED
			for DIRECTOR
			INDEX
			DATE
			1880
			APPROVED
			for DIRECTOR
			INDEX
			DATE
			1880
			APPROVED
			for DIRECTOR
			INDEX
			DATE
			1880
			APPROVED
			for DIRECTOR
			INDEX
			DATE
			1880
			APPROVED
			for DIRECTOR
			INDEX
			DATE
			1880
			APPROVED
			for DIRECTOR
			INDEX
			DATE
			1880
			APPROVED
			for DIRECTOR
			INDEX
			DATE
			1880
			APPROVED
			for DIRECTOR
			INDEX
			DATE
			1880
			APPROVED
			for DIRECTOR
			INDEX
			DATE
			1880
			APPROVED
			for DIRECTOR
			INDEX
			DATE
			1880
			APPROVED
			for DIRECTOR
			INDEX
			DATE
			1880
			APPROVED
			for DIRECTOR
			INDEX
			DATE
			1880
			APPROVED
			for DIRECTOR
			INDEX
			DATE
			1880
			APPROVED
			for DIRECTOR
			INDEX
			DATE
			1880
			APPROVED
			for DIRECTOR
			INDEX
			DATE
			1880
			APPROVED
			for DIRECTOR
			INDEX
			DATE
			1880
			APPROVED
			for DIRECTOR
			INDEX
			DATE
			1880
			APPROVED
			for DIRECTOR
			INDEX
			DATE
			1880
			APPROVED
			for DIRECTOR
			INDEX
			DATE
			1880
			APPROVED
			for DIRECTOR
			INDEX
			DATE
			1880
			APPROVED
			for DIRECTOR
			INDEX
			DATE
			1880
			APPROVED
			for DIRECTOR
			INDEX
			DATE
			1880
			APPROVED
			for DIRECTOR
			INDEX
			DATE
			1880
			APPROVED
			for DIRECTOR
			INDEX
			DATE
			1880</

AMENDMENTS

1	10-27-73	10-27-73	10-27-73
2	11-1-73	11-1-73	11-1-73
3	11-1-73	11-1-73	11-1-73
4	11-1-73	11-1-73	11-1-73
5	11-1-73	11-1-73	11-1-73

5325-00211

SCHEDULE FOR PARTS COMPRISING
IRDE 328
 SCHEDULE FOR DIRG. 114.
 APPROVED FOR DIRECTION
 MADE
 DELINA BIRIA
 7-7-73

DRAWING No.	No. PER ASSY	NOMENCLATURE	CAT/PART No.
IRDE 328	1	FASTENER SET TURN LOCK	5325-00211
IRDE 328/1	1	LEVER	5340-001918
IRDE 328/2	1	NUT PLAIN 1/4" DIA. 1/2" H. 1512309	5310-002404
IRDE 328/3	1	LOOP STRAP FASTENER	5340-001934
IRDE 328/4	1	HANDLE CLIP	5340-001915
IRDE 328/4	1	BRACKET PLATE	5340-002479
IRDE 328/5	4	RIVET SOLID STEEL FLAT HD. 3/16" DIA. 1 1/2" LG. 1512155	5320-001342
IRDE 328/5	1	RIVET SOLID STEEL SNAP HD. 2.5 X 8 mm. 1512155	5320-001343
IRDE 328/6	2	HOOK	5340-002471
		RIVET SOLID STEEL SNAP HD. 2.5 X 8 mm. 1512155	5320-001343

NOTE:-
 (i) ALL THE STEEL SCREWS, NUTS AND WASHERS ETC, MUST BE CADMIUM PLATED BEFORE USE.
 (ii) ALL THE STEEL SCREWS WILL CONFORM TO SPECIFICATIONS: IS:1365 P55 AS REQUIRED IS:1366 P55
 * LENGTH TO SUIT AS REQUIRED

CONTROLLED COPY

D.C.A. 0630-T(P), 3115-I, 3165-I, 3189-I, 31706-I, 5760-I

13

POLY-NEG. PREPARED AT COA(I) DEHRA DUN
 PREPARED BY : *Pranav*
 CHECKED BY : *Pranav*
 DATE: 20.8.92

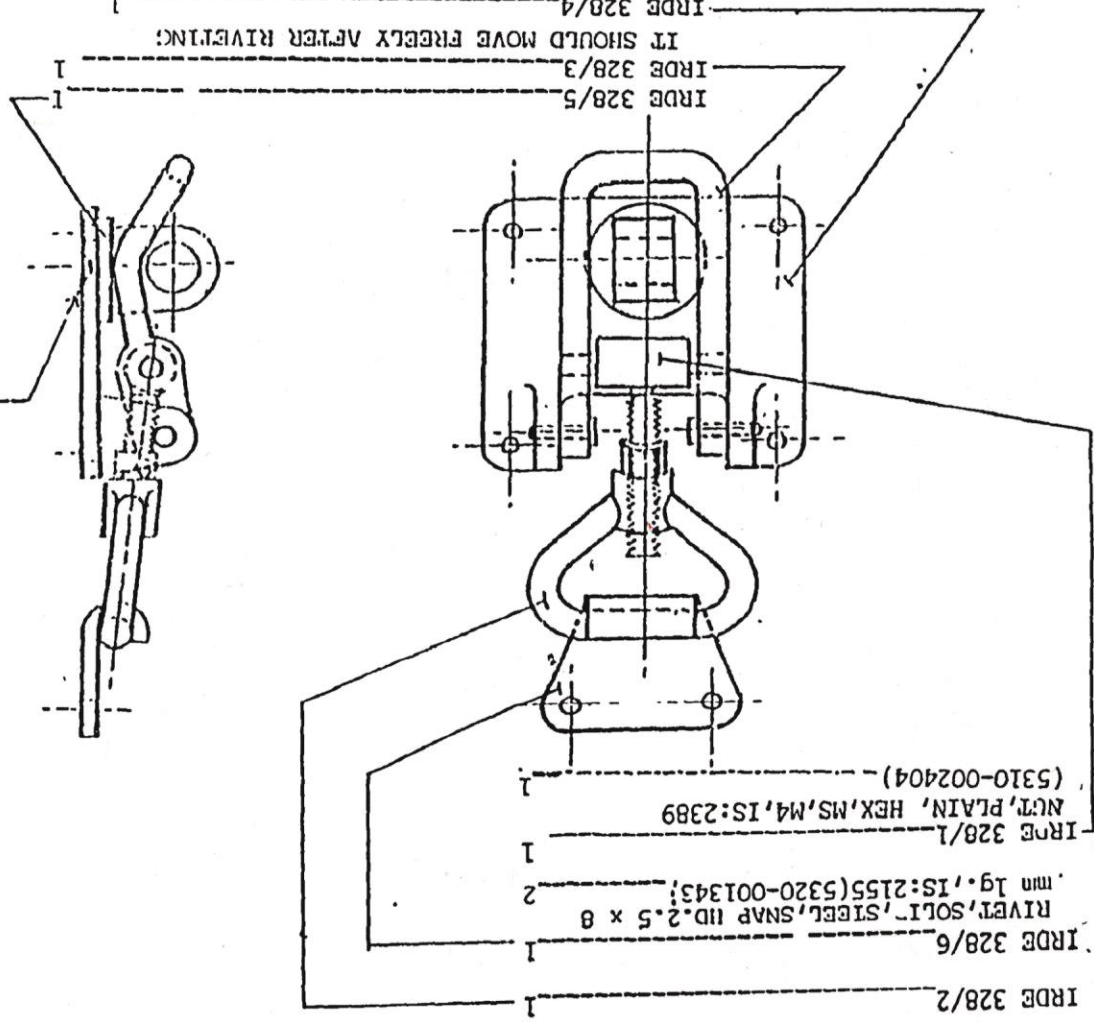
D.C.(I):-0630-I(P), 3113-I, 3165-I, 3418-I, 3777-I, 4736-I, 5563-I, 5760-I.

TITLE:- FASTENER SET, TURN LOCK		SCALE	SH
FINISH & SPEC	SEE DETAILS	DRG No	IRDE-328
MATL & SPEC	SEE DETAILS	CAT/PI No	5325-000211
SYMB	AMENDMENTS	ON	BASD
		USED	ON
	D.C.-5760-I, POLY-NEG. PREPARED & NEW COPY SEALED IN REPLACEMENT OF EXISTING ONE.	CHD SIG	DATE
			3.9.92
		CHD	S41- DATE: 7.7.72
		CHD	S41- COAWD. DUN
		TCD	S41- FOR S41- CONTROLLER
		DRN	S41- APPROVED

TO BE SECURED TO THE CASE BY MEANS OF WELDING OR RIVETING AS THE CASE MAY BE. LENGTH TO SUIT AS REQUIRED

NOTE:-

- 1 IRDE 328/4 RIVET, SOLID, STEEL, FLAT HD., 3x12 mm LG IS: 2155(5320-01342)
- 2 IRDE 328/3 RIVET, SOLID, STEEL, SNAP HD., 2.5x8 mm LG IS: 2155(5320-001343)



- 1 IRDE 328/2
- 1 IRDE 328/6 RIVET, SOLID, STEEL, SNAP HD. 2.5 x 8 mm LG, IS: 2155(5320-001343)
- 1 IRDE 328/1 NUT, PLAIN, HEX, MS, M4, IS: 2389 (5310-002404)

FOR EXPLANATION OF DIMENSIONING ETC, SEE COA(I) GUIDE No. 001-1992
 THIRD ANGLE PROJECTION. DIMENSIONS ARE IN mm

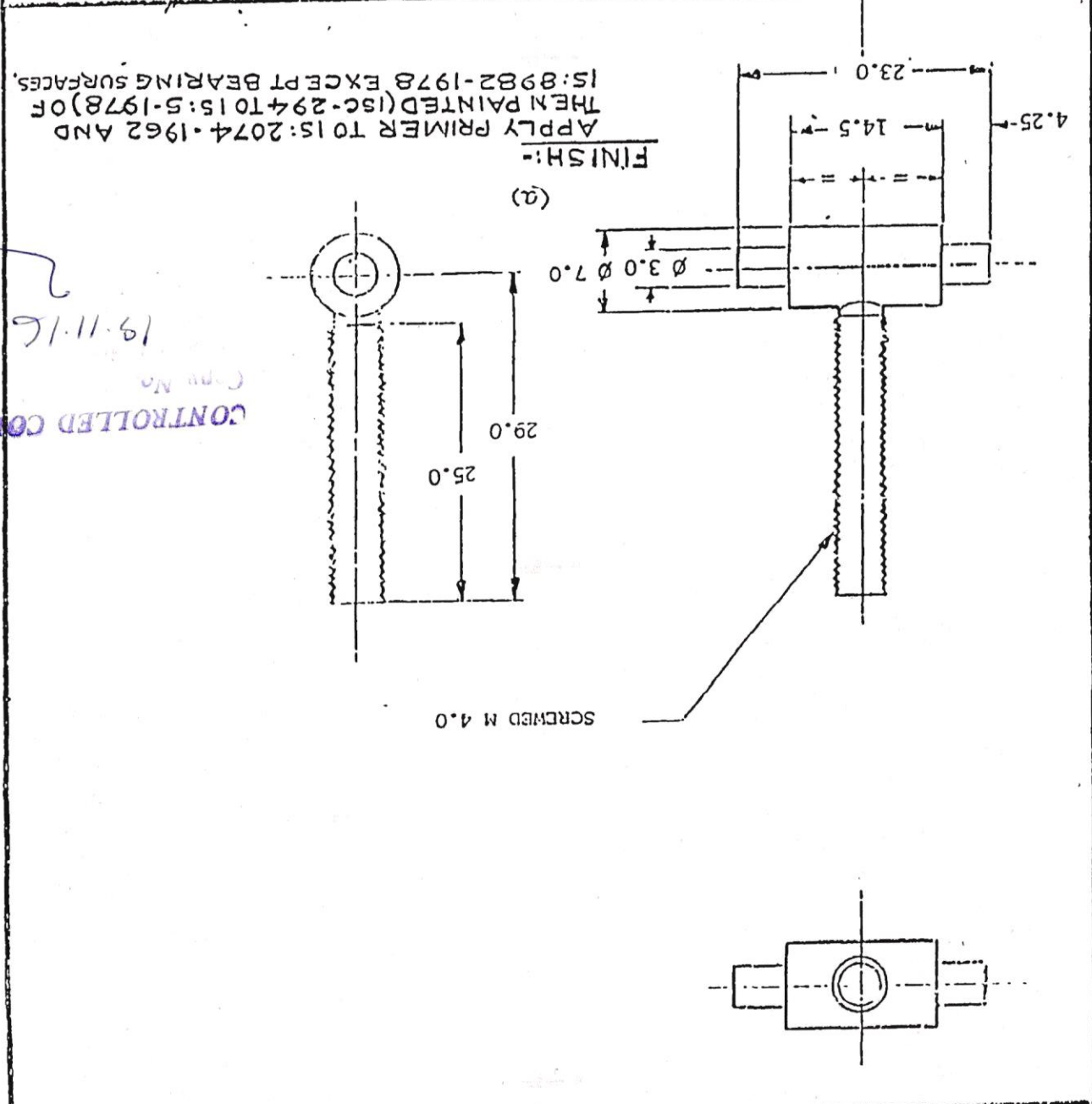
CONTROLLED COPY
 Copy No. 19.11.72

14

POLY. NEG, PREPARED AT COA(I) DEIRA EUN
 PREPARED BY : *Amr*
 CHECKED BY : *Abdullah*
 DATE: 20.8.93

D.C. (I)-0455-I(P), 2002-I, 2091-I, 3165-I, 3777-I, 5563-I, 5585-I, 5761-I, 5792-I.

TITLE: LEVER		FINISH & SPEC		MATERIAL SPEC	
SCALE		NO. DRG		CAT/PT	
SH		IRDE - 328/1		5340-001918	
ON		ON		ON	
BASED ON		STEEL CLASS-4 TO IS:1875-1978		STEEL IS:1875-1978 IV REVISION-STEEL-CLASS-4	
AMENDMENTS		SYMB		USED	
D.C.: 5761-I, POLY. NEG. PREPARED & NEW COPY SEALED IN REPLACEMENT OF EXISTING ONE.		M		3.9.93.	
(A) D.C.: 5792-I, MATERIAL & FINISH AMENDED.		M		5.11.93	
DRN		Sd/-		APPROVED	
TCD		S/-		FOR Sd/-	
CHD		Sd/-		CONTROLLER	
CHD		Sd/-		COORD. DUN	
DATE		Sd/-		DATE: 5-6-69	



FOR EXPLANATION OF DIMENSIONING ETC, SEE COA(I) GUIDE NO. 001-1992.
 THIRD ANGLE PROJECTION.
 DIMENSIONS ARE IN MM

CONTROLLED COPY
 19.11.16
 C.M. No.

10

POLY-NEG. PREPARED AT CQA(I) DEFRA DUN
 PREPARED BY: *M. M. M. M.*
 CHECKED BY: *S. J. S. J.*
 DATE: 20.8.93

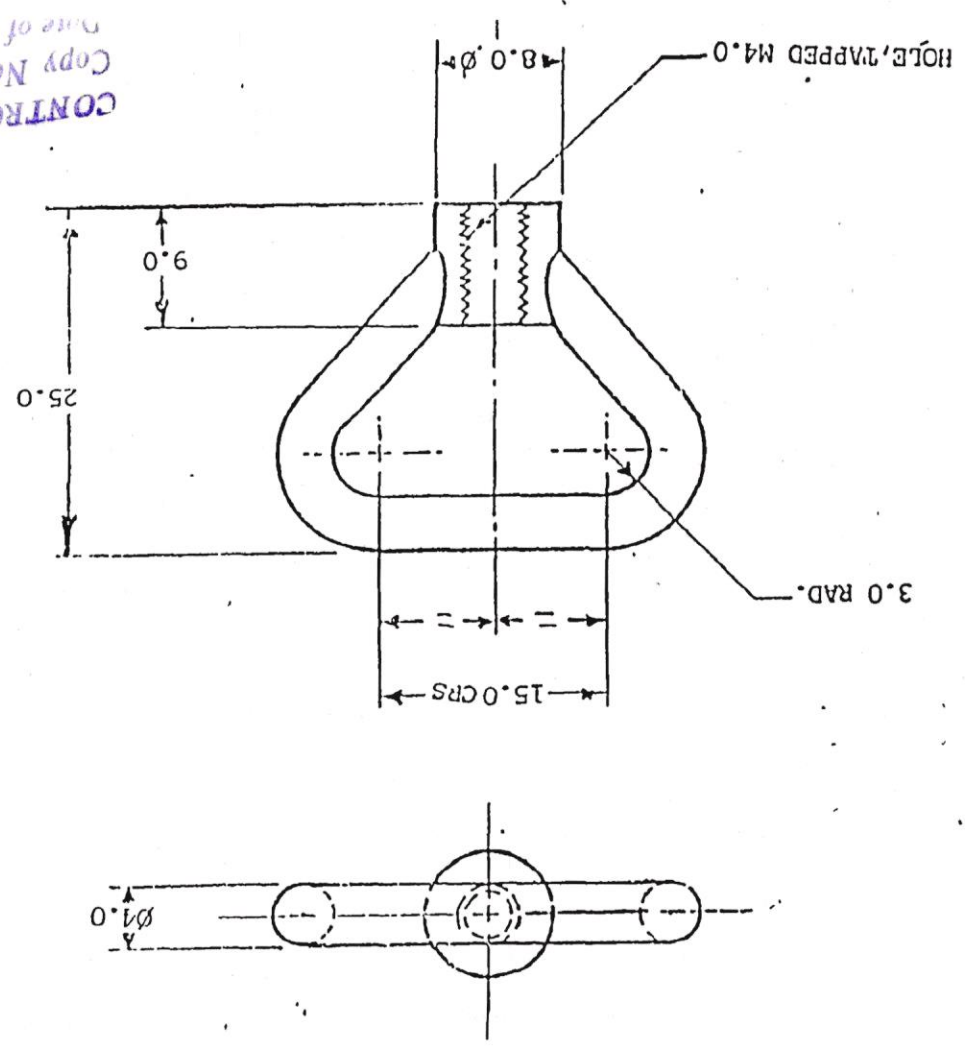
D.C. (I):-0455-I(P), 2002-I, 2091-I, 3165-I, 3777-I, 5563-I, 5585-I, 5761-I, 5792-I

LOOP, STRAP FASTENER

TITLE:		MATERIAL & SPEC	
SCALE		STEEL CLASS. 4 TO IS: 1875-1978.	
DRG No.		STEEL CLASS. 4 TO IS: 1875-1978.	
IRDE-328/2		STEEL CLASS. 4 TO IS: 1875-1978.	
SH OF		STEEL CLASS. 4 TO IS: 1875-1978.	
CAT/PT		STEEL CLASS. 4 TO IS: 1875-1978.	
5340-001934		STEEL CLASS. 4 TO IS: 1875-1978.	
ON		STEEL CLASS. 4 TO IS: 1875-1978.	
BASED ON		STEEL CLASS. 4 TO IS: 1875-1978.	
ON		STEEL CLASS. 4 TO IS: 1875-1978.	
USED		STEEL CLASS. 4 TO IS: 1875-1978.	
DATE		STEEL CLASS. 4 TO IS: 1875-1978.	
3.9.93.		STEEL CLASS. 4 TO IS: 1875-1978.	
CHD		STEEL CLASS. 4 TO IS: 1875-1978.	
5.11.93		STEEL CLASS. 4 TO IS: 1875-1978.	
CHD		STEEL CLASS. 4 TO IS: 1875-1978.	
SDI-		STEEL CLASS. 4 TO IS: 1875-1978.	
DATE:- 5.6.69		STEEL CLASS. 4 TO IS: 1875-1978.	
SDI-		STEEL CLASS. 4 TO IS: 1875-1978.	
COA/D. DUN		STEEL CLASS. 4 TO IS: 1875-1978.	
SDI-		STEEL CLASS. 4 TO IS: 1875-1978.	
FOR		STEEL CLASS. 4 TO IS: 1875-1978.	
SDI-		STEEL CLASS. 4 TO IS: 1875-1978.	
APPROVED		STEEL CLASS. 4 TO IS: 1875-1978.	
SDI-		STEEL CLASS. 4 TO IS: 1875-1978.	

FINISH & SPEC:-
 (a) D.C. 5761-I. MATL. AND FINISH AMENDED.
 D.C. 5761-I POLY-NEG. PREPARED & NEW COPY.
 SEALED IN REPLACEMENT OF EXISTING ONE.
 AMENDMENTS

APPLY PRIMER TO IS: 2074-1962 AND THEN
 PAINTED (ISC-294 TO IS: 5.1978) OF IS: 8982-
 1978 EXCEPT BEARING SURFACES.



CONTROLLED COPY
 Copy No. 19.0.15
 Date of Issue 19.0.15

FOR EXPLANATION OF DIMENSIONING ETC, SEE CQA(I) GUIDE NO. 001-1992. THIRD ANGLE PROJECTION. DIMENSIONS ARE IN mm

16

POLY NEG. PREPARED AT COA(I) CEREA DCN
 PREPARED BY : *W. J. ...*
 CHECKED BY : *W. J. ...* DATE: 20. 8. 93

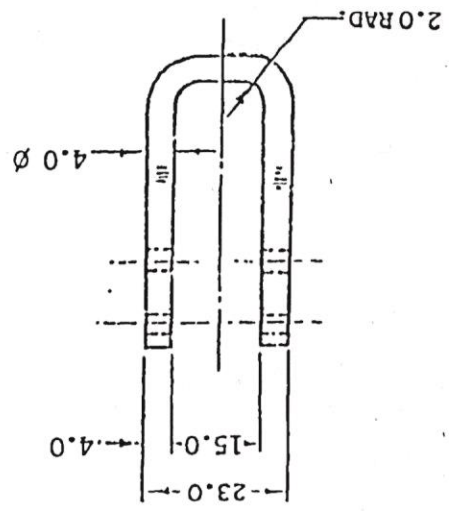
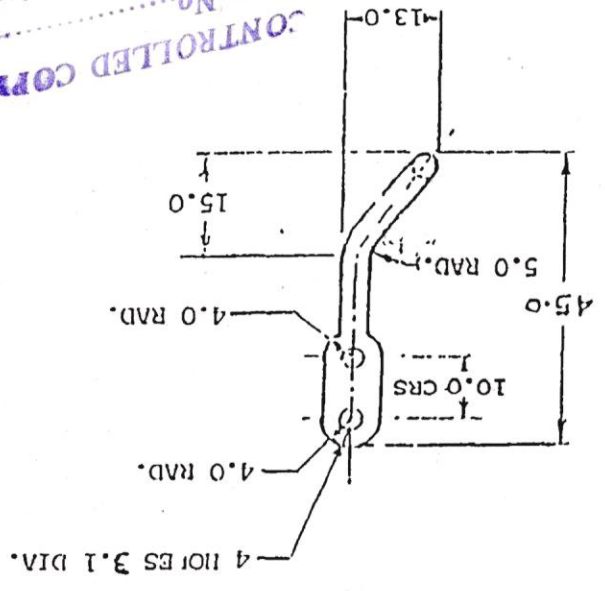
D.C. (I) :- 0455-I(P), 2002-I, 2091-I, 3165-I, 3777-I, 5563-I, 5585-I, 5761-I., 5792-I.

HANDLE, CLIP

TITLE:		SCALE	
FINISH & SPEC		DNG No	
SPEC		IRDE-328/3	
MATERIAL & SPEC		5340-001915	
AMENDMENTS		CMT/PT	
		ON	
SYMB		BASIC	
D.C.:- 5792-I		ON	
MATERIAL AND FINISH AMENDED.		USED	
D.C.:- 5761-I. POLY. NEG. PREPARED & NEW COPY SEALED IN REPLACEMENT OF EXISTING ONE.		CHD	
SEAL IN REPLACEMENT OF EXISTING ONE.		Sd/- DATE: 5.6.69	
		CHD	
		Sd/- COORD. DUN	
		TCD	
		Sd/- FOR Sd/-	
		DRN	
		Sd/- APPROVED	

FINISH & SPEC:
 (a) APPLY PRIMER TO IS: 2074-1962 AND THEN PAINTED (ISC-294 TO IS: 5-1978) OF IS: 8982-1978 EXCEPT BEARING SURFACES.

CONTROLLED COPY
 Copy No.
 Date of Issue 19-11-16



FOR EXPLANATION OF DIMENSIONING ETC, SEE CQA(I) GUIDE NO. 001-1992
 THIRD ANGLE PROJECTION.
 DIMENSIONS ARE IN MM

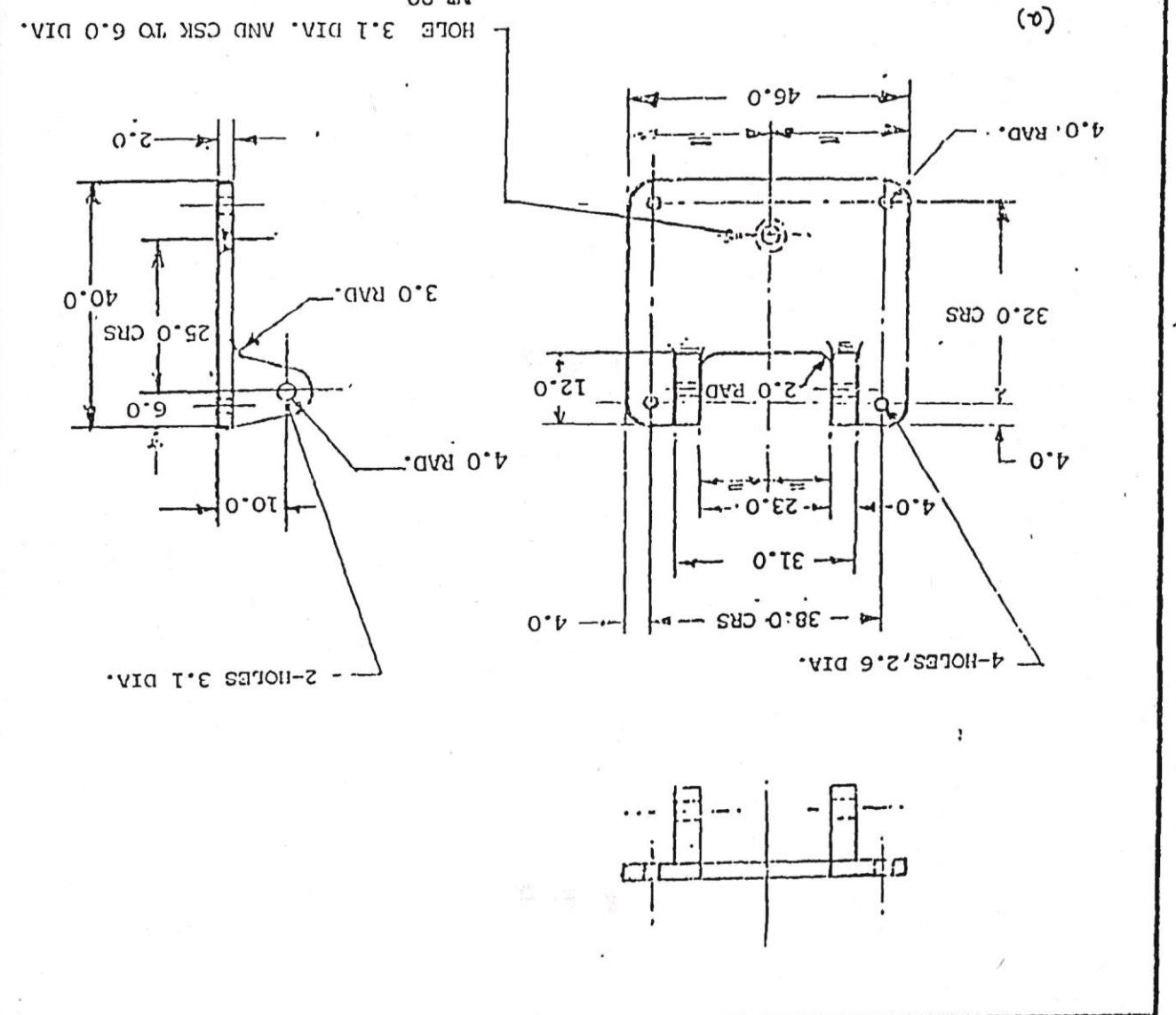
17

POLY. NEG. PREPARED AT COA(I) DEHRA DUN
 PREPARED BY : *S. Kumar*
 CHECKED BY : *S. Kumar*
 DATE: 20.8.93

D.C.(I):-0455-I(P), 2002-I, 2091-I, 3165-I, 3418-I, 3777-I, 5563-I, 5585-I, 5761-I, 5792-I.

TITLE: BRACKET, PLATE		SCALE	
FINISH & SPEC: TO BE PAINTED WITH BEST APPROVED BRASS COLOUR EXCEPT BEARING SURFACES SEE ABOVE		DRG No. IRDE-328/4	
MATERIAL SPEC: STEEL, IS-2098-1982 CLASS-4 TO IS:1875-1978 FOR FORGING OR STEEL GDE 280-520 TO IS: 1030-1989 FOR CASTING.		C/D No. 5340-002179	
SYMB		ON	
AMENDMENTS		BASED ON	
D.C.:5761-I. POLY. NEG. PREPARED & NEW COPY SEALED IN REPLACEMENT OF EXISTING ONE.	W	CHD SIG	USED
MATL. AND FINISH AMENDED.	W	DATE	DATE:
(D.C.:5792-I)		5.11.93	CHD
			CHD
			TCD
			DRN
			APPROVED
			FOR
			COA(I) D. DUN
			DATE:

FINISH & SPEC: APPLY PRIMER TO IS: 2074-1962 AND THEN PAINTED BEARING SURFACES. (ISC: 294 TO IS: 5-1978) OF IS: 8982-1978 & EXCEPT
 CONTROLLED COPY
 Copy No. *18*
 Date of Issue *19.11.93*



FOR EXPLANATION OF DIMENSIONING ETC, SEE COA(I) GUIDE NO. 001-1992. THIRD ANGLE PROJECTION. DIMENSIONS ARE IN mm

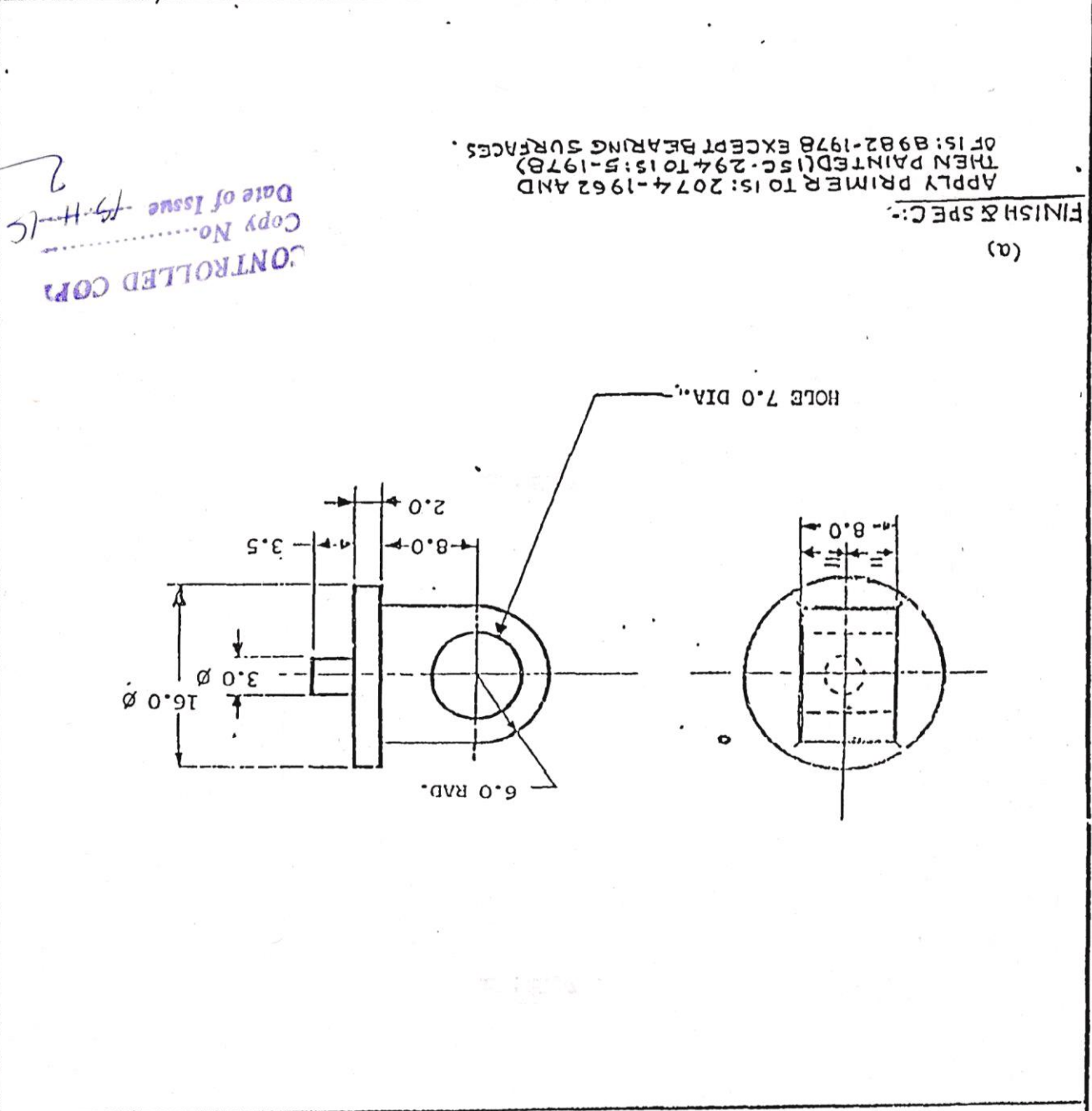
18

POLY. NEG. PREPARED AT QA(I) DEHRA DUN

PREPARED BY : *Ganesh*
 CHECKED BY : *S. K. Singh*
 DATE :

D.C.(I):-0455-I(P), 2002-I, 2091-I, 3165-I, 3777-I, 5663-I, 5761-I, 5792.I.

TITLE:- EYE, LOCKING			FINISH & SPEC	TO BE PRINTED WITH LATEST APPROVED SERVICE
SCALE			FINISH & SPEC	COLOUR EXCEPT BEARING SURFACES - SEE ABOVE.
DRG No			MATL & SPEC	C-30 TO 15:1570-1961
IRDE-328/5			STEEL, S-1570/C-30	
CAT/PT No.			AMENDMENTS	
5340-001914			SYMB	
ON			D.C.-5761-I POLY. NEG. PREPARED & NEW COPY	
BASED ON			SEALED IN REPLACEMENT OF EXISTING ONE.	
ON			MATERIAL AND FINISH AMENDED.	
USED			(a) D.C.: 5792-I.	
CHD	DATE	CHD SIG	DATE	
	5.11.93	<i>W</i>		
CHD	DATE	CHD SIG	DATE	
	3-9-93	<i>W</i>		
DRN	DATE	CHD SIG	DATE	
TCD	DATE	CHD SIG	DATE	
CHD	DATE	CHD SIG	DATE	
DRN	DATE	CHD SIG	DATE	
APPROVED	DATE	CHD SIG	DATE	
<i>Sdl</i>				
FOR Sdl-				
CONTROLLER				
Sdl-				
COORD. DUN				
Sdl-				
DATE: 5.6.69				



FOR EXPLANATION OF DIMENSIONING ETC, SEE CQA(I) GUIDE No. 001-1992.
 THIRD ANGLE PROJECTION.
 DIMENSIONS ARE IN mm

CONTROLLED COPY
 Copy No.
 Date of Issue *19-H-15*

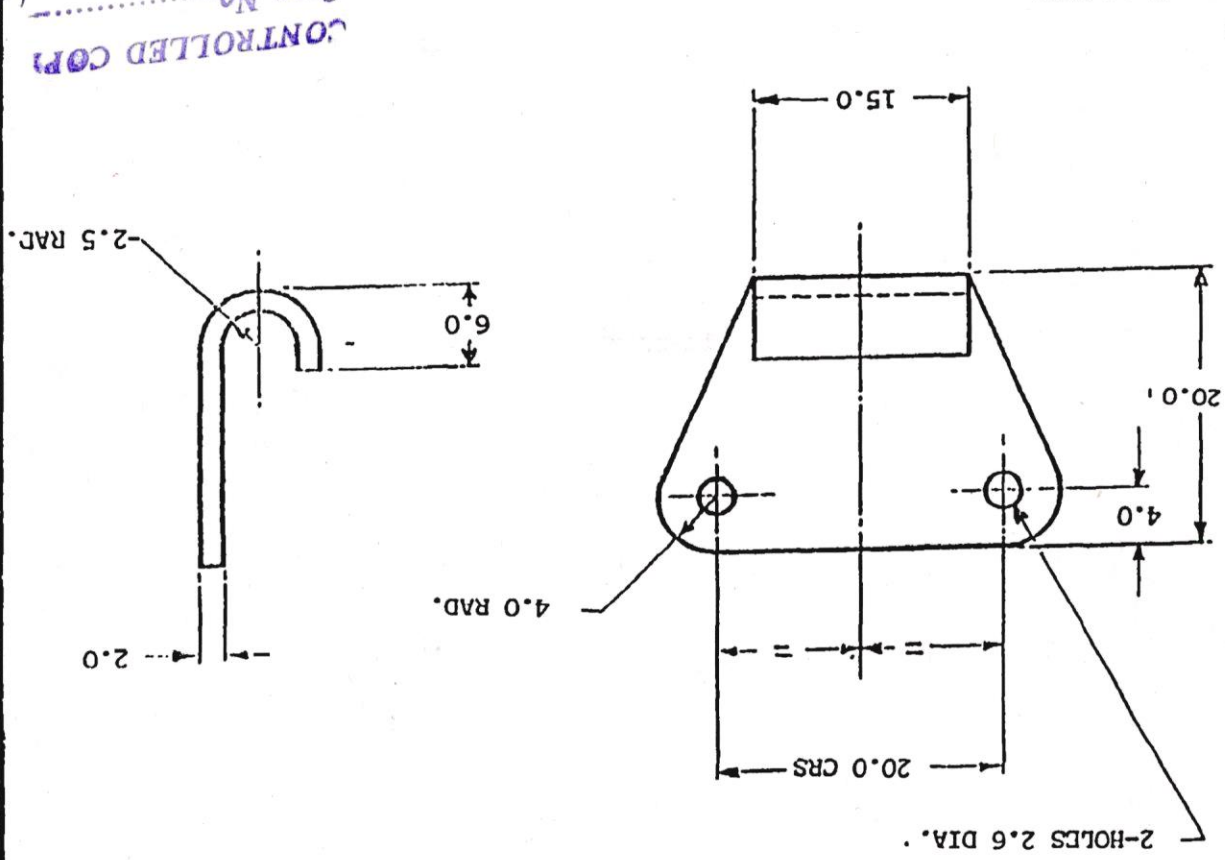
19

REQUESTER/LEG PREPARED BY : *Omman* DEHRA DUN
 D.C. (I) :- 0630-I(P), 0785-I(P), 3113-I, 3418-I, 5563-I, 5585-I, 5760-I, 5792-I.
 CREATED BY : *Sagarika* DATE: 20.8.93

TITLE: 1		HOOK	
FINISH & SPEC		TO BE PAINTED WITH LATEST APPROVED SERVICE COLOUR. SEE ABOVE.	
MATERIAL SPEC		CARBON STEEL SHEET DEEP DRAWING IS: 513-1986	
SYMB		AMENDMENTS	
D.C. - 5760-I. POLY. NEG. PREPARED NEW COPY SEALED IN REPLACEMENT OF EXISTING ONE.		W 5.9.93	
(A) D.C. - 5792-I. FINISH AMENDED.		W 5.11.93	
DRN		S41- APPROVED	
TCD		S41- FOR S41- CONTROLLER	
CHD		S41- COORD. DUN	
CHD		S41- DATE. 7.7.72	
USED		ON	
BASED ON		CAT/PT	
NO.		5340-002471	
DRG NO.		IRDE-328/6	
SCALE		SH OF	

FINISH & SPEC: (A)

APPLY PRIMER TO IS: 2074-1962 AND THEN PAINTED (ISC-294 TO IS: 5:1978) OF IS: 8982-1978 EXCEPT BEARING SURFACES.



CONTROLLED COPY
 Copy No.
 Date of Issue 15.11.72

FOR EXPLANATION OF DIMENSIONING ETC. SEE 'CQA(I) GUIDE No 001-1992 THIRD ANGLE PROJECTION. DIMENSIONS ARE IN mm

95

DRG. RETRACED AT CII, DEHRA DUN
 TRACED BY:- *Shamir*
 CHECKED BY:- *Shamir*
 DATE:-11.9.80

D.C.(1):-0455-I (P), 2002-I, 2091-I, 3515-I, 5564-I, 5583-I, 55839-I, 5773-I, 5839-I.

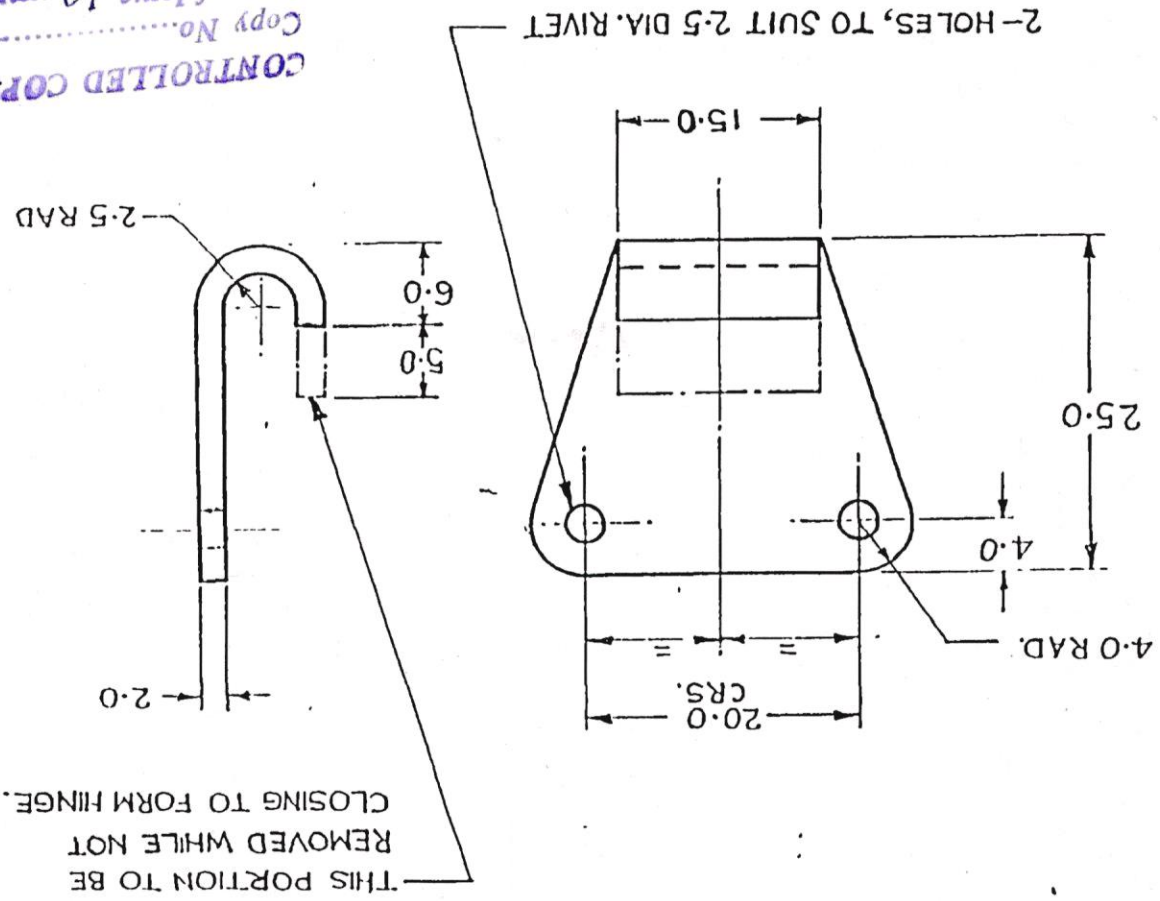
PREPARED BY:- *Shamir*
 CHECKED BY:- *Shamir*
 DATE:-7/1/93

HOOK

(d) D.C.:-5839-I. FINISH AMENDED. 8-4-94	(c) D.C.(1):-5583-I. NEW COPY SEALED IN REPLACEMENT OF EXISTING ONE 9.10.93	(b) D.C.(1):-5564-I. NOTE SHEET AMENDED. 27.4.92	(a) FINISH:- APPLY PRIMER TO IS:2074-1962 AND THEN PAINTED (ISC 294 TO IS:5-1978) & IS:8982-1978 EXCEPT BEARING SURFACES. 15:513-1986
(c) D.C.(1):-3515-I. CAT/PT. No. ADDED. 2012.16	(b) D.C.(1):-2091-I:-USE EXTENDED FOR SIGILL BORE AVE 10.4 & 107A. 15.1.71	(a) D.C.(1):-2002-I:- DRG. SEALED. 1.4.70	(g) MATL:- CARBON STEEL SHEET, DEEP DRAWING, IS:513-1986
(b) D.C.(1):-0455-I (P):- DRG. PROV. SEALED. 5/-	(a) D.C.(1):-2002-I:- DRG. SEALED. 5/-	(a) D.C.(1):-2002-I:- DRG. SEALED. 5/-	(a) D.C.(1):-2002-I:- DRG. SEALED. 5/-
(a) D.C.(1):-2002-I:- DRG. SEALED. 5/-	(a) D.C.(1):-2002-I:- DRG. SEALED. 5/-	(a) D.C.(1):-2002-I:- DRG. SEALED. 5/-	(a) D.C.(1):-2002-I:- DRG. SEALED. 5/-

SHS	SH
5340-002424	5340-002424
CAT/PT. No.	(a)
IRDE 379/9	IRDE 379/9
DRG. No.	DRG. No.
SCALE:-2:1	SCALE:-2:1
DATE:-29.5.69	DATE:-29.5.69
FOR DIRECTOR	FOR DIRECTOR
IRDE	IRDE
DEHRA DUN	DEHRA DUN
CHECKED	CHECKED
5/-	5/-
APPROVED	APPROVED
5/-	5/-

CONTROLLED COPY
 Copy No.
 Date of Issue 19-11-76



FOR EXPLANATION OF DIMENSIONING ETC., SEE COA(1) GUIDE No.001-1992
 THIRD ANGLE PROJECTION
 DIMENSIONS ARE IN mm

21

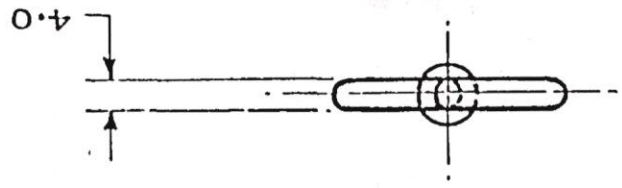
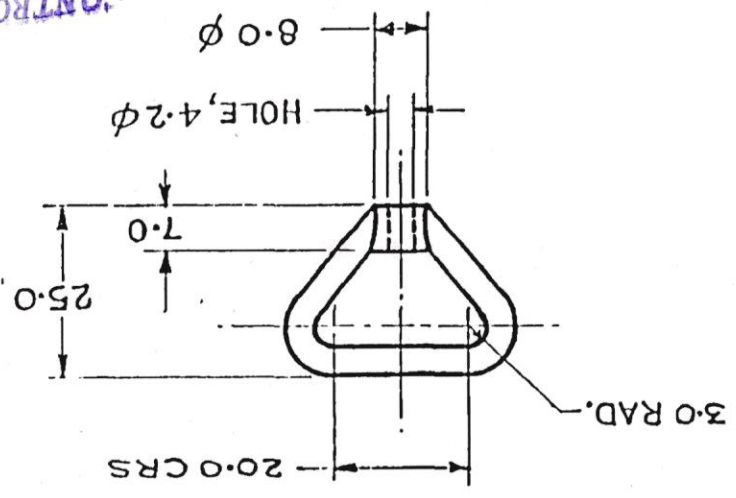
DRG. RETRACED AT CII, DEHRA DUN
 TRACED BY: - *Shamir*
 CHD. BY: - *Shamir*
 DATE: - 10.9.80

D.C.(I):-0455-I(P), 2002-I, 2091-I, 3515-I, 5564-I, 5583-I.
 5773-I, 5839-I.
 POLYESTER NEGATIVE PREPARED AT COA(I) D DUN
 PREPARED BY: - *Shamir*
 CHECKED BY: - *Shamir* DATE: - 7/11/93

LOOP

(a) D.C.(I):-5839-I. FINISH AMENDED.		8.4.94	
D.C. 5773-I. POLY. NEG. PREP. & NEW COPY SEALED IN REPLACEMENT OF EXISTING ONE		9.10.93	
(c) D.C.(I):-5583-I.	MATL. SPECN. AMENDED.	22.8.92	
(b) D.C.(I):-5564-I.	NOTE SHEET AMENDED.	27.4.92	1
(a) D.C.(I):-3515-I	CAT/PT. No. ADDED	20.12.76	
D.C.(I):-2091-I:-USE EXTENDED FOR	SIGHT BORE AFV 104A & 107A	15.1.71	
D.C.(I):-2002-I:-	DRG. SEALED	1.4.70	
D.C.(I):-0455-I (P):-	DRG. PROV. SEALED	14.7.69	
AMENDMENTS		SIG.	DATE

(c) D.C.(I):-5583-I. MATL:- STEEL, 19:1878-1978 TV REVISION.	
(d) STEEL CLASS-4. Apply PRIMER to IS 2074-1962 AND THEN PAINTED (IS 294 TO IS 5-1978) OF IS: 2982-1978 EXCEPT BEARING SURFACES.	
CAT/PART. No. (e) IRDE 379/15	
DRG. No.	
SCALE:- 1:1 DATE:- 29.5.69	
APPROVED s.d/- FOR DIRECTOR IRDE DEHRA DUN	CHECKED s.d/- s.d/-
SHS. SH.	



FOR EXPLANATION OF DIMENSIONING ETC., SEE COA(I) GUIDE NO. 001-1992. DIMENSIONS ARE IN mm

CONTROLLED COPY
 Copy No. 19.11.16
 Date of Issue 19.11.16

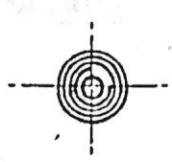
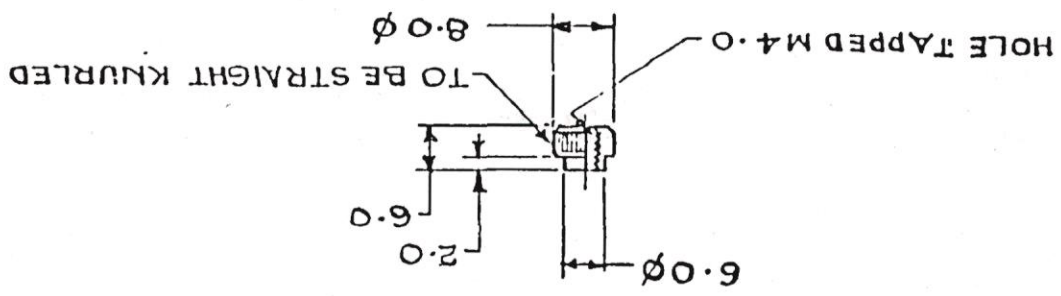
92

TRACED AT CII DEHRADUN
 TRACED BY:-
 CHECKED BY:-
 DATE:- 1.9.80

D.C.(I):- 0455-I(P), 2002-I, 2091-I, 3515-I, 5564-I,
 5583-I, 5773-I, 5839-I.
 POLYESTER NEGATIVE PREPARED AT CQA(I)-D.DUN
 PREPARED BY:-
 CHECKED BY:-
 DATE:- 7/11/93

(A) D.C.:- 5839-I FINISH AMENDED.	8.4.94	
D.C. 5773-I POLY NEG. PREP & NEW COPY SEALED IN REPLACEMENT OF EXISTING ONE.	9.10.93	
(D) D.C.(I):- 5583-I M.T.L. AMENDED.	22.8.92	
(D) D.C.(I):- 5564-I NOTE SHEET AMENDED.	27.4.92	
(D) C.(I):- 3515-I NO. AMENDED & CAT./PT. NO. ADDED.	2012.76	Sd/-
D.C.(I):- 2091-I - USE EXTENDED FOR SIGHT BORE AFY. 104AR107A.	15.1.71	Sd/-
D.C.(I):- 2002-I DRG. SEALED.	1.4.70	Sd/-
D.C.(I):- 0455-I (P) DRG. PROV. SEALED.	14.7.69	Sd/-
AMENDMENTS		
MATL:- STEEL ROD, IS17283-1974 CHEMICAL- COMPOSITION 30 C 8 0: IS:1570 PT II 1979		
APPLY PRIMER TO IS:2074-1962 AND THEN PAINTED (ISC294 TO IS:5-1978) & IS:8982-1978 EXCEPT BEARING SURFACES.		

DRAWN TRACED APPROVED		Sd/-
CHECKED		Sd/-
FOR DIRECTOR	IRDE	Sd/-
DEHRA DUN		
SCALE:- 1/1	DATE:- 29.5.69	
DRG No.	IRDE 379/16	
CAT/PART No.	5310-003244	
SHEETS		



FOR EXPLANATION OF DIMENSIONING ETC., SEE CQA(I) GUIDE No. 001-1992
 THIRD ANGLE PROJECTION
 DIMENSIONS ARE IN MILLIMETERS.

CONTROLLED COPY
 Copy No.
 Date of Issue 19.11.76

23