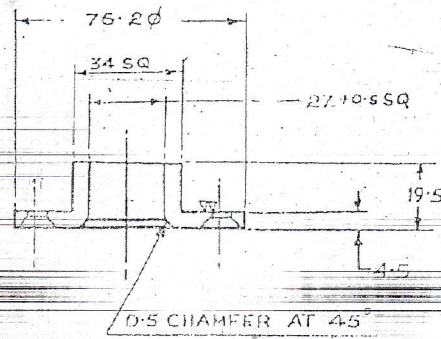
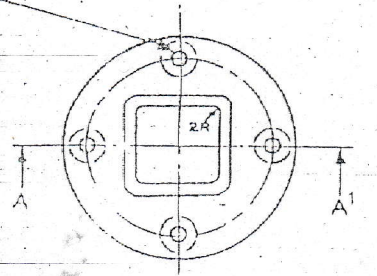


D.C.(1)-5065-E, 6279-E, 5337-E, 7067-E, 6885-E (PROV), 6885-E (PROV), 7652-E

FOR EXPLANATION OF DIMENSIONING ETC, SEE ILE NOTE SHEET No. 2  
 THIRD ANGLE PROJECTION. DIMENSIONS ARE IN MM.

4 HOLES, 6.30 Ø SK AT 90°  
 TO: 12 Ø ON 61.00 PCD



SECTION AA

1-COAT PAINT, PFU, PRIMING, GS, RED OXIDE OF IRON TO  
 SPECN. ISS 3-47-13 & 1-COAT FINISHING PAINT O.G.  
 SCAMIC 314 TO SPECN. IS 8982

ISSUE No.	ZONE/REF	BRIEF RECORD OF AMENDMENTS.	AUTHORITY	INITIAL	DATE
3		SHT 6 WAS 10 SHTS - SHEET 7 ISSUE ADVANCED	D.C.(1)-6279-E (PROV)	Sd	26.5
2	A/3	REN. ISS. 3-47-13, 7 ISS - 0010-15 WERE IND/SL/3197 & IND/SL/3236 ISSU ADVANCED	D.C.(1)-6279-E	Sd	26.5
1		DWG. SEALED.	D.C.(1)-5065-E	Sd	26.5
1		ORIGINAL ISSUE			26.5
MATERIAL: MALLEABLE CAST IRON GRADE WM410 TO IS 2107		DESIGN/R&D AUTHORITY			
FINISH: AS ON DRAWING.					
DRN:	SL-75	CHD:	SL-75	COMP:	SL-75
SCALE:	1:2	APP'D:	Sd-23-12-74		
PASSED:	Sd-23-12-74				
TITLE		CONTRACTOR'S NAME & REF			
HUB		CAT. No.			
		DRG. No.			
		CIL 3240 (SHT 6)			

TRACED BY: *Prasad*  
 CHECKED BY: *Prasad*  
 DATE: 15-7-8.

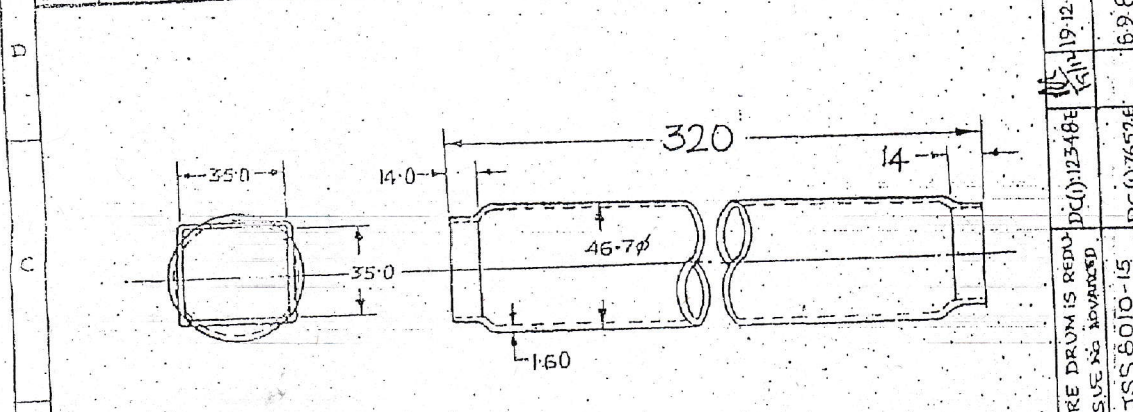
CONTROLLERATE OF INSPECTION ELECTRONICS.

O C F S K

19

D.C.(): 5068-E, 6279-E, 5065-E (PROV), 6327-E, 6065-E (PROV), 7067-E, 7652-E, 12540-E.

4		3		2		1	
CIL 3240		FOR EXPLANATION OF DIMENSIONING ETC, SEE ILE NOTE SHEET No.2					
DRG. No		THIRD ANGLE PROJECTION. DIMENSIONS IN MM.					



**FINISH:-**  
 1. COAT PAINT, PFU PRIMING, GS. REDOXIDE OF IRON TO SPECN. U.S. 5347-13 & 1 COAT FINISHING PAINT OF SCAMIC 314 TO SPECN. IS: 8982.

4	C/1, 3&4	DIM 14.0 & 35.0 WERE 12.5 & 34.2. MATL HAS "STEEL SE 50" ISSUE ADVANCED. D.C.(): 6085-E (PROV) CANCELLED.	D.C.(): 7067-E	Sd-	16-12-78
4	C/1, 3&4	DIM 46.7 & 35.0 WERE 42.5 & 34.2. MATL HAS "STEEL SE 50" ISSUE ADVANCED.	D.C.(): 6085-E (PROV)	Sd-	16-8-78
3		SHT 7 HAS "10 SHTS - SHT 7" ISSUE ADVANCED. D.C.(): 6085-E (PROV) CANCELLED.	D.C.(): 6327-E	Sd-	10-7-77
3		SHT 7 WAS "10 SHTS - SHT 7" ISSUE ADVANCED.	D.C.(): 6085-E (PROV)	Sd-	3
2	A/3	FINISH SPECN. U.S. 5347-13 & 1 COAT FINISHING PAINT OF SCAMIC 314 TO SPECN. IS: 8982. DWG. SEALED.	D.C.(): 6279-E	Sd-	26-5-77
1		ORIGINAL ISSUE	D.C.(): 5068-E	Sd-	21-4-75
ISSUE No	ZONE/REF	BRIEF RECORD OF AMENDMENTS.	AUTHORITY	INITIAL	DATE
MATERIAL:-		STEEL GRADE, SE-0 TO IS 1079	DESIGN/R&D AUTHORITY		
FINISH:-		AS ON DRAWING.	CONTRACTOR'S NAME & REF.		
PRN:	Sd-	CHD:	Sd-	TRD:	
SCALE:	2	APPD:	Sd-	23-12-74	
PASSED:	Sd-	23-12-74	SEALED. 21-4-75		
TITLE:		CENTRE DRUM	CAT. No		
AHSP		CONTROLLERATE OF INSPECTION. ELECTRONICS	ORG. No. CIL 3240 (SHT-7)		

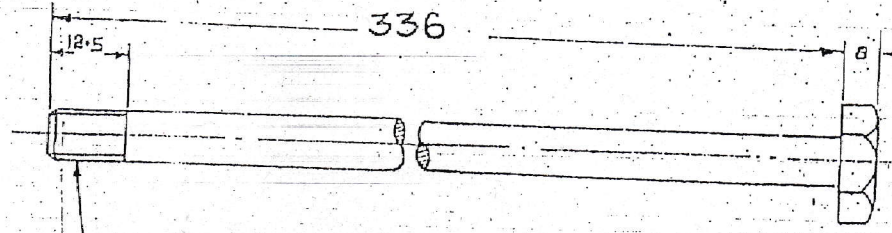
TRACED AT CIL BANGALORE  
 TRACED BY: *[Signature]*  
 CHECKED BY: *[Signature]*  
 DATE: 18-7-80

LENGTH OF THE CENTRE DRUM IS REDUCED FROM 425 TO 320. ISSUE IS ADVANCED.  
 FINISH SPECN. WAS JSS 8010-15. ISSUE ADVANCED.  
 A/3  
 D

OCF SK 701 8

18

CIL 3240 (SHTB)  
 FOR EXPLANATION OF DIMENSIONING ETC, SEE ILE NOTE SHEET N.2  
 THIRD ANGLE PROJECTION. DIMENSIONS IN MM.



SCREWED M10X1.25

ISSUE No.	ZONE/REF	BRIEF RECORD OF AMENDMENTS	AUTHORITY	INITIAL	DATE
4		LENGTH OF THE BOLT CHANGED TO FROM 416.0±0.5 TO 336.0. DWG ADVANCED TO ISSUE 4.	D.C.(1): 12348-E	Sd	19/12/08
3	C/I	DIMENSION '8' WAS '6'. ISSUE ADVANCED. D.C.(1): 6885-E (PROV) CANCELLED.	D.C.(1): 7067-E	Sd	16-12-78
3	C/I	DIMENSION '8' WAS '6'. ISSUE ADVANCED.	D.C.(1): 6885-E (PROV)	Sd	1-8-78
2		"SHT B" WAS "10 SHTS" - SHT '8' ISSUE ADVANCED. D.C.(1): 6327-E (PROV) CANCELLED.	D.C.(1): 6327-E	Sd	19-7-77
2		"SHT B" WAS "10 SHTS" - SHT '8' ISSUE ADVANCED.	D.C.(1): 6327-E (PROV)	Sd	3-6-77
1		DWG SEALED.	D.C.(1): 5068-E	Sd	21-4-75
1		ORIGINAL ISSUE			18-12-74

MATL: STEEL, S242-S TO IS 226

FINISH: RUST PROOF

DRN: sd/- CHD: sd/- TRD: COMP: CONTRACTOR'S NAME & REF

SCALE: 1:1 APPD: d/-

PASSED: Sd/-

TITLE: BOLT

SEALFD: 21-4-75

CAT. No.

DWG. No. CIL 3240 (SHTB)

AHSP. CONTROLLERATE OF INSPECTION ELECTRONICS

D.C. (1) 5068-E (PROV), 7067-E, 12348-E

PREPARED BY: CIL DANGLOOCE  
 DRAWN BY: Sd/-  
 CHECKED BY: Sd/-  
 DATE: 18-7-50

OCFSK S.K 701

801