

SL NO	DRAWING NO	NOMENCLATURE	QTY	SL NO
1	0204 04 02 01 03 001 00AA	HOOK WIRE HOUSING SCABBARD	1	1
2	0204 04 02 01 03 002 00AA	INSERT HOUSING SCABBARD	1	2
1	0204 04 02 00 01 001 00AA	SPRING GRIP	1	3
1	0204 04 02 04 06 001 00AA	BLADE	1	4
2	0204 04 02 04 06 002 00AA	CROSS PIECE	1	5
1	0204 04 02 05 001 00AA	CATCH	1	6
2	0204 04 02 05 002 00AA	SCREW SET CATCH	1	7
3	0204 04 02 05 003 00AA	POMMEL BAYONET	1	8
4	0204 04 02 05 004 00AA	SPRING CATCH	1	9
5	0204 04 02 05 005 00AA	PLUNGER CATCH	1	10
1	STANDARD COMPONENT	CSK HEAD WASHING SCREW B022	1	11
		811305-100		

CONTROLLED COPY No. 075

03/03/19
 Confirmed as correct copy
 03/03/19
 Jt. Works Manager
 STANDARD CELL

BAYONET MK-I ASSEMBLY TREE FOR JVPC 5.56x30 mm

DESIGN AUTHORITY	DRN. ANKIT	DATE. 14/03/19	CHKD. MAC
ARDE	APPD. DATE. 14/03/19	SEALD. DATE.	Director
PUNE 411021			

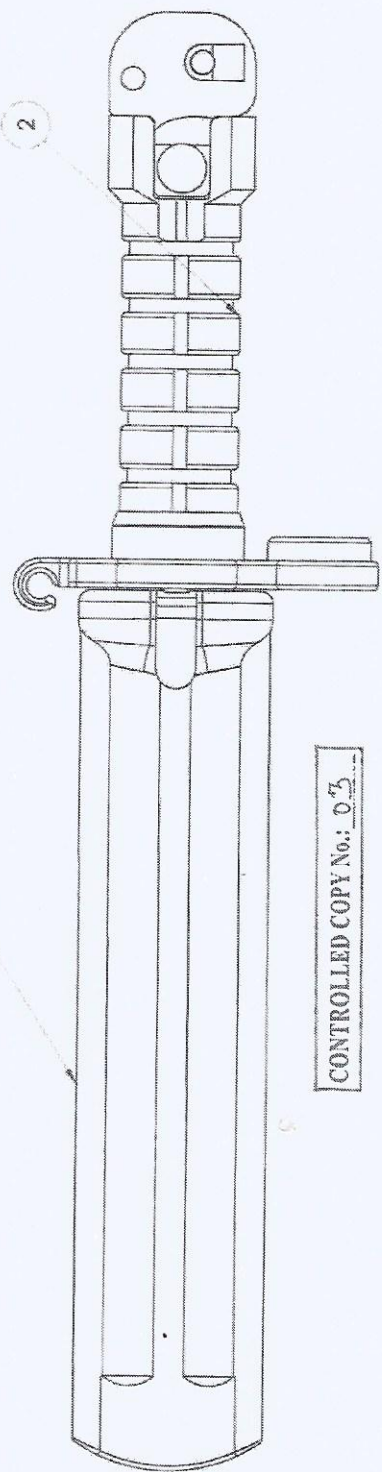
Handwritten: 1003/1000

Handwritten: out of the
Jr. Works Manager
STANDARD CELL

DRG. CONVENTIONS CONFIRM TO INDIAN STANDARDS
DIMENSIONS ARE IN mm UNLESS OTHERWISE STATED.

GENERAL TOL.: FINE / MEDIUM / COARSE
CLASS TO IS: 2102

1



CONTROLLED COPY No.: 03

Sr. No.	DATE	AUTHORITY	BRIEF RECORD	ZONE	CD	GO
DRN: SOURABH						
SIGN: <i>[Signature]</i>						
DATE: 14/03/2019						
APPD.						
DATE: 14/03/2019						
SEALED						
DATE:						
SHEET SIZE: A3						
SCALE: 1:1						
DESIGN AUTHORITY						
ARDE						
PUNE 411021						
DRG No.	0 2 0 4	0 1 4	0 2	0 0	0 0	0 0
IC	S	SS	S	AA	A	C
JVPC	PART No.	DS CAT No.	AHSP			

BAYONET MK-I FOR
JVPC 5.56X30mm



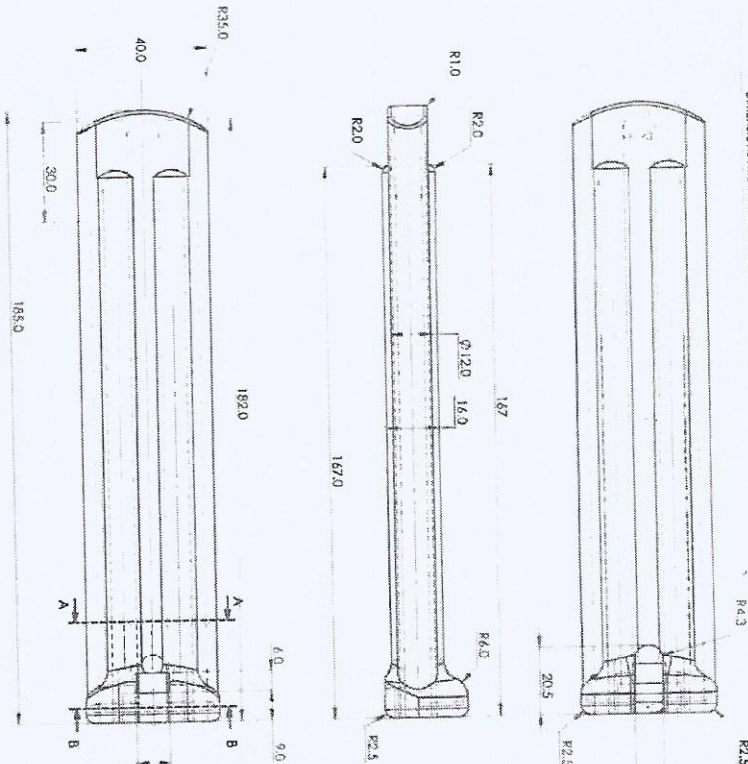
NOTE:
ASSEMBLY IS TO BE CARRIED OUT AS PER ASSEMBLY PROCEDURE NO.
ARDE/JVPC/BAYONET/ASSEMBLY PROCEDURE/2019/03

1 2 3 4 5 6 7 8

GENERAL TOL. - FINE / MEDIUM / COARSE
 CLASS TO IS: 2107
 DIM. CONVENTIONS CONFORM TO INDIAN STANDARDS
 DIMENSIONS ARE IN MM UNLESS OTHERWISE STATED

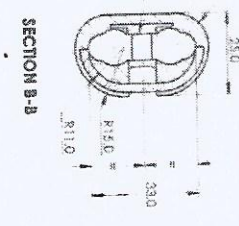
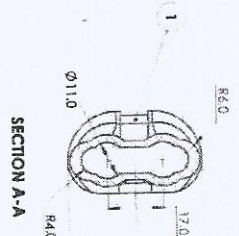
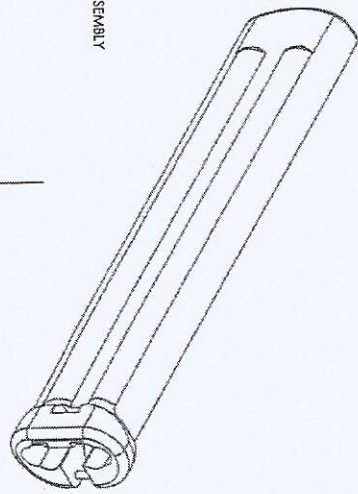
St. No. NOMENCLATURE DRAWING No. QTY
 1 HOOK WIRE HOUSING SCABBARD 0204 04 02 01 03 001 000A
 2 INSERT HOUSING SCABBARD 0204 04 02 01 03 002 000A

Controlled Copy
 of
 Original Drawing
 No. 0204 04 02 01 03 001 000A
 Date: 14/03/2019
 J. Woods
 STANDAARD
 14/03/2019



CONTROLLED COPY No.: 03

- NOTE:**
1. REMOVE ALL FLASH AND BLOW HOLES
 2. COLOUR TO IS : S-2007 IS: 698 STEEL GREY
 3. COATING TO BE COATED BY VAPOUR COATING PROCESS MATT FINISH COLOUR STEEL GREY TO SPECN. IS: S-2007 No.698
 4. TAPER 1.00 mm ALLOWED ON EACH SIDE FOR CORE EXTRACTION
 5. MARKING BY Moulding AS SHOWN IN DIAGRAM.
- ▽ YEAR OF MANUFACTURING.
 - MANUFACTURER'S CODE.
 6. Moulding B TO BE CARRIED OUT AS PER ASSEMBLY PROCEDURE NO. ARDE/JVPC/BA/YN/ET/ASSEMBLY PROCEDURE/2019/03



Sl. No.	DATE	AUTHORITY	BREF RECORDED	ZONE	CD	GO
DRN: S-2007 IS: 698	14/03/2019	J. Woods	POLYAMIDE (NYLON-6)			
SGN: 14/03/2019			TO SPECN. IS: 13465/1972			
APPD.	DATE: 14/03/2019		PROJECTIVE FINISH:			
DATE: 14/03/2019						
SCALE: 1:1						
DESIGN APPROVED BY: ARDE						
DATE: 14/03/2019						
SCALE: 1:1						
DESIGN APPROVED BY: ARDE						
DATE: 14/03/2019						
SCALE: 1:1						
DESIGN APPROVED BY: ARDE						
DATE: 14/03/2019						
SCALE: 1:1						
DESIGN APPROVED BY: ARDE						
DATE: 14/03/2019						
SCALE: 1:1						
DESIGN APPROVED BY: ARDE						
DATE: 14/03/2019						
SCALE: 1:1						
DESIGN APPROVED BY: ARDE						
DATE: 14/03/2019						
SCALE: 1:1						
DESIGN APPROVED BY: ARDE						
DATE: 14/03/2019						
SCALE: 1:1						
DESIGN APPROVED BY: ARDE						
DATE: 14/03/2019						
SCALE: 1:1						
DESIGN APPROVED BY: ARDE						
DATE: 14/03/2019						
SCALE: 1:1						
DESIGN APPROVED BY: ARDE						
DATE: 14/03/2019						
SCALE: 1:1						
DESIGN APPROVED BY: ARDE						
DATE: 14/03/2019						
SCALE: 1:1						
DESIGN APPROVED BY: ARDE						
DATE: 14/03/2019						
SCALE: 1:1						
DESIGN APPROVED BY: ARDE						
DATE: 14/03/2019						
SCALE: 1:1						
DESIGN APPROVED BY: ARDE						
DATE: 14/03/2019						
SCALE: 1:1						
DESIGN APPROVED BY: ARDE						
DATE: 14/03/2019						
SCALE: 1:1						
DESIGN APPROVED BY: ARDE						
DATE: 14/03/2019						
SCALE: 1:1						
DESIGN APPROVED BY: ARDE						
DATE: 14/03/2019						
SCALE: 1:1						
DESIGN APPROVED BY: ARDE						
DATE: 14/03/2019						
SCALE: 1:1						
DESIGN APPROVED BY: ARDE						
DATE: 14/03/2019						
SCALE: 1:1						
DESIGN APPROVED BY: ARDE						
DATE: 14/03/2019						
SCALE: 1:1						
DESIGN APPROVED BY: ARDE						
DATE: 14/03/2019						
SCALE: 1:1						
DESIGN APPROVED BY: ARDE						
DATE: 14/03/2019						
SCALE: 1:1						
DESIGN APPROVED BY: ARDE						
DATE: 14/03/2019						
SCALE: 1:1						
DESIGN APPROVED BY: ARDE						
DATE: 14/03/2019						
SCALE: 1:1						
DESIGN APPROVED BY: ARDE						
DATE: 14/03/2019						
SCALE: 1:1						
DESIGN APPROVED BY: ARDE						
DATE: 14/03/2019						
SCALE: 1:1						
DESIGN APPROVED BY: ARDE						
DATE: 14/03/2019						
SCALE: 1:1						
DESIGN APPROVED BY: ARDE						
DATE: 14/03/2019						
SCALE: 1:1						
DESIGN APPROVED BY: ARDE						
DATE: 14/03/2019						
SCALE: 1:1						
DESIGN APPROVED BY: ARDE						
DATE: 14/03/2019						
SCALE: 1:1						
DESIGN APPROVED BY: ARDE						
DATE: 14/03/2019						
SCALE: 1:1						
DESIGN APPROVED BY: ARDE						
DATE: 14/03/2019						
SCALE: 1:1						
DESIGN APPROVED BY: ARDE						
DATE: 14/03/2019						
SCALE: 1:1						
DESIGN APPROVED BY: ARDE						
DATE: 14/03/2019						
SCALE: 1:1						
DESIGN APPROVED BY: ARDE						
DATE: 14/03/2019						
SCALE: 1:1						
DESIGN APPROVED BY: ARDE						
DATE: 14/03/2019						
SCALE: 1:1						
DESIGN APPROVED BY: ARDE						
DATE: 14/03/2019						
SCALE: 1:1						
DESIGN APPROVED BY: ARDE						
DATE: 14/03/2019						
SCALE: 1:1						
DESIGN APPROVED BY: ARDE						
DATE: 14/03/2019						
SCALE: 1:1						
DESIGN APPROVED BY: ARDE						
DATE: 14/03/2019						
SCALE: 1:1						
DESIGN APPROVED BY: ARDE						
DATE: 14/03/2019						
SCALE: 1:1						
DESIGN APPROVED BY: ARDE						
DATE: 14/03/2019						
SCALE: 1:1						
DESIGN APPROVED BY: ARDE						
DATE: 14/03/2019						
SCALE: 1:1						
DESIGN APPROVED BY: ARDE						
DATE: 14/03/2019						
SCALE: 1:1						
DESIGN APPROVED BY: ARDE						
DATE: 14/03/2019						
SCALE: 1:1						
DESIGN APPROVED BY: ARDE						
DATE: 14/03/2019						
SCALE: 1:1						
DESIGN APPROVED BY: ARDE						
DATE: 14/03/2019						
SCALE: 1:1						
DESIGN APPROVED BY: ARDE						
DATE: 14/03/2019						
SCALE: 1:1						
DESIGN APPROVED BY: ARDE						
DATE: 14/03/2019						
SCALE: 1:1						
DESIGN APPROVED BY: ARDE						
DATE: 14/03/2019						
SCALE: 1:1						
DESIGN APPROVED BY: ARDE						
DATE: 14/03/2019						
SCALE: 1:1						
DESIGN APPROVED BY: ARDE						
DATE: 14/03/2019						
SCALE: 1:1						
DESIGN APPROVED BY: ARDE						
DATE: 14/03/2019						
SCALE: 1:1						
DESIGN APPROVED BY: ARDE						
DATE: 14/03/2019						
SCALE: 1:1						
DESIGN APPROVED BY: ARDE						
DATE: 14/03/2019						
SCALE: 1:1						
DESIGN APPROVED BY: ARDE						
DATE: 14/03/2019						
SCALE: 1:1						
DESIGN APPROVED BY: ARDE						
DATE: 14/03/2019						
SCALE: 1:1						
DESIGN APPROVED BY: ARDE						
DATE: 14/03/2019						
SCALE: 1:1						
DESIGN APPROVED BY: ARDE						
DATE: 14/03/2019						
SCALE: 1:1						
DESIGN APPROVED BY: ARDE						
DATE: 14/03/2019						
SCALE: 1:1						
DESIGN APPROVED BY: ARDE						
DATE: 14/03/2019						
SCALE: 1:1						
DESIGN APPROVED BY: ARDE						
DATE: 14/03/2019						
SCALE: 1:1						
DESIGN APPROVED BY: ARDE						
DATE: 14/03/2019						
SCALE: 1:1						
DESIGN APPROVED BY: ARDE						
DATE: 14/03/2019						
SCALE: 1:1						
DESIGN APPROVED BY: ARDE						
DATE: 14/03/2019						
SCALE: 1:1						
DESIGN APPROVED BY: ARDE						
DATE: 14/03/2019						
SCALE: 1:1						
DESIGN APPROVED BY: ARDE						
DATE: 14/03/2019						
SCALE: 1:1						
DESIGN APPROVED BY: ARDE						
DATE: 14/03/2019						
SCALE: 1:1						
DESIGN APPROVED BY: ARDE						
DATE: 14/03/2019						
SCALE: 1:1						
DESIGN APPROVED BY: ARDE						
DATE: 14/03/2019						
SCALE: 1:1						

HOOK WIRE HOUSING SCABBARD

JVPC PART No. 0204 IC 04 SS 02 S AA 01 A 03 C 01 AHSP SSI 00A A

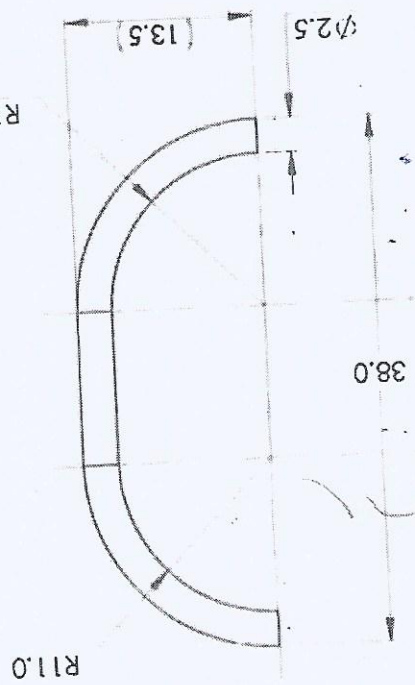
DRG No. 0204
ARDE
 PUNE 411021
 DESIGN AUTHORITY
 SCALE: 2:1
 SHEET SIZE: A4
 EST. MASS 1.87 gm

TITLE: HOOK WIRE HOUSING SCABBARD
 DATE: 14/03/2019
 SEaled: 14/03/2019
 APPD. FOR DIRECTOR
 NITRIDING TO SPECN. MIL-S-6090A NOTICE 3-1998
 PROTECTIVE FINISH:

DRN: SOURABH
 SIGN: *[Signature]*
 DATE: 14/03/2019
 CHECKED: *[Signature]*
 AUTHORITY: *[Signature]*
 MATERIAL: STEEL TO IS: 4454 PT 1 2001, DH
 BRIEF RECORD
 ZONE
 CD GO
 SIGN

NOTE: REMOVE ALL SHARP EDGES AND BURRS.

CONTROLLED COPY No.: 03



[Handwritten notes and signatures in a box, including '04/09/20' and 'Sourabh']

GENERAL TOL.: FINE / MEDIUM / COARSE
 CLASS TO IS: 2102
 DRG. CONVENTIONS CONFIRM TO INDIAN STANDARDS
 DIMENSIONS ARE IN MM UNLESS OTHERWISE STATED.

DRG No. 0204 IC 04 SS 02 S AA 01 A 03 C 01 AHSP SSI 00A A

ISS C A AA C SS IC
 V A 0 0 2 0 3 0 1 0 2 0 4 0 4
 DRG No. 0 2 0 4 0 4 0 2 0 4

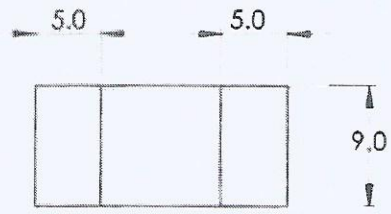
A

GENERAL TOL. : FINE / MEDIUM / COARSE
 CLASS TO IS: 2102

DRG. CONVENTIONS CONFIRM TO INDIAN STANDARDS
 DIMENSIONS ARE IN mm UNLESS OTHERWISE STATED.

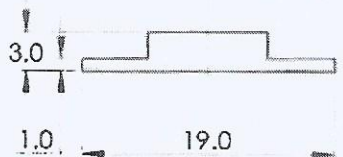
A

B



Handwritten: 100/mm
 मसिवा कौ मी प्रमाण
 मसिवा सिवाक
 Certified as correct copy
 of Org. 04/09/2019
Signature: Sripk
 20/03/2019

C



C

CONTROLLED COPY No.: 0.3

NOTE:

1. REMOVE ALL SHARP EDGES AND BURRS.
2. HARDNESS: 260-310 HV.

D

D

Sr. No. DATE AUTHORITY BRIEF RECORD ZONE CD GO SIGN

DRN: SOURABH
 SIGN: *Handwritten*
 DATE: 14/03/2019 CHECKED

MATERIAL:
 STEEL TO IS: 5517-1993 Gd. 55C8

APPD. DATE: 14/03/2019 *Handwritten Signature* FOR DIRECTOR

PROTECTIVE FINISH:
 PHOSPHATED TO SPECN. IS :3618-1966 , CLASS 'B'

SEALED DATE:
 SHEET SIZE: A4 EST. MASS
 SCALE: 2:1 2.56 gm

TITLE:
INSERT HOUSING SCABBARD

DESIGN AUTHORITY
ARDE
 PUNE 411021

DRG No. 0 2 0 4 0 4 0 2 0 1 0 3 0 0 2 0 0 A A
 IC SS S AA A C SST

F

F

JVPC PART No. DS CAT No. AHSP

1

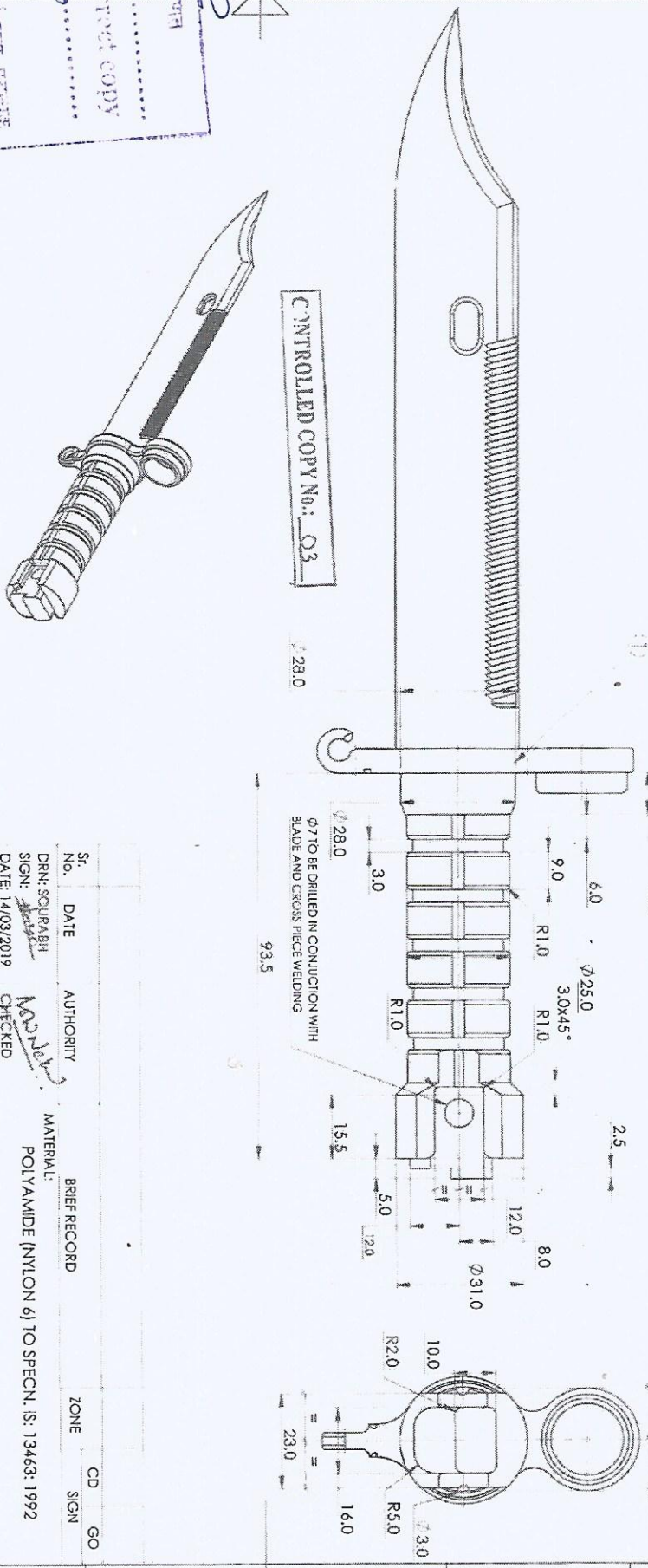
2

3

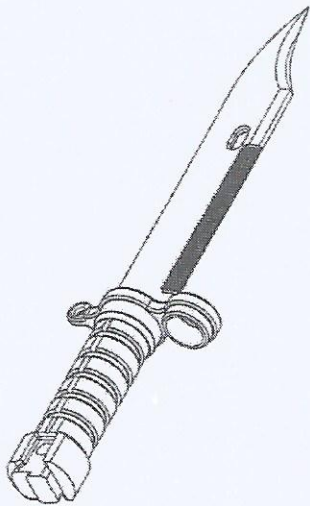
4

GENERAL TOOL: FINE / MEDIUM / COARSE
 CLASS TO IS: 2102
 DRG. CONVENTIONS CONFORM TO INDIAN STANDARDS
 DIMENSIONS ARE IN MM UNLESS OTHERWISE STATED.

ST. NO. 1
 NOMENCLATURE: BLADE AND CROSS PIECE WELDING
 DRAWING NO. 0204 04 02 04 06 000 00AA
 QTY. 1



CONTROLLED COPY No.: 03

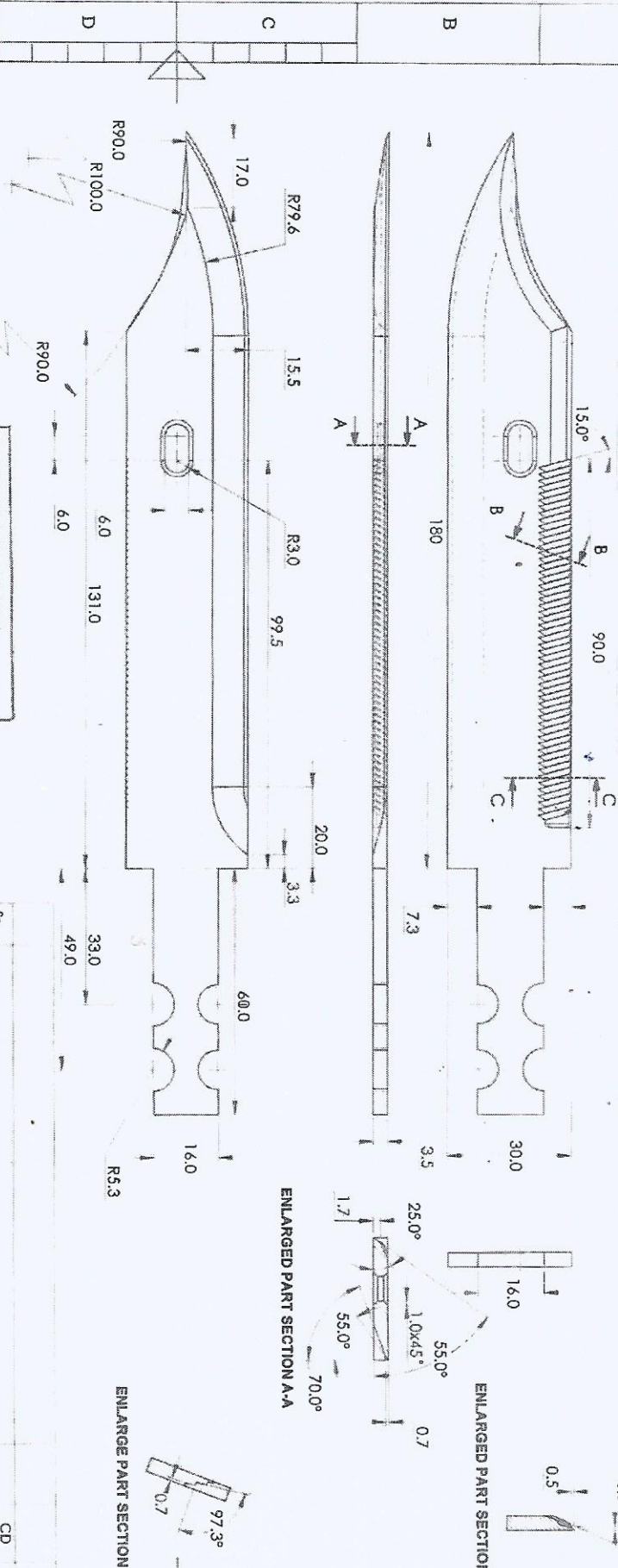


- NOTE:**
1. COLOUR:- TO IS: 5-2007 IS: 698 STEEL GREY
 2. COATING:- TO BE COATED BY VAPOCURE PROCESS
 3. MATT FINISH COLOUR STEEL GREY TO SPECN. IS: 5-2007 No.698
 3. Moulding IS TO BE CARRIED OUT AS PER ASSEMBLY PROCEDURE NO. ARDE/JVPC/ BAYONET/ASSEMBLY PROCEDURE/2019/03

ST. No.	DATE	AUTHORITY	BRIEF RECORD	ZONE	CD	GO
DRN: SOURABH	14/03/2019	Checked	POLYAMIDE (NYLON 6) TO SPECN. IS: 13463: 1992			
SIGN: <i>[Signature]</i>	DATE: 14/03/2019	CHECKED	MATERIAL:			
APPD. <i>[Signature]</i>	DATE: 14/03/2019	DIRECTOR	PROTECTIVE FINISH:			
DATE: 14/03/2019						
SEALD						
SHEET SIZE: A3	EST. MASS	TITLE:				
SCALE: 1:1	253.55 gm	GRIP BAYONET				
DESIGN AUTHORITY						
ARDE						
PUNE 411021						
DRG No. 02040402040600000AA						
IC	SS	S	AA	A	C	SST
JVPC	PART No.	DS CAT No.	AHSP			

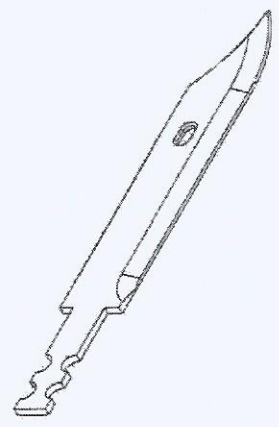
Handwritten: 14/03/2019
 CONTROLLED COPY
 J. WORKS MANAGER
 ARDE

GENERAL TOL.: FINE / MEDIUM / COARSE
 CLASS TO IS: 2102
 DRG. CONVENTIONS CONFORM TO INDIAN STANDARDS
 DIMENSIONS ARE IN mm UNLESS OTHERWISE STATED.



NOTE:-
 HARDNESS:- 550-650 HV

CONTROLLED COPY No.: D3



Sr. No.	DATE	AUTHORITY	BRIEF RECORD	ZONE	CD
DRN: SOURABH	14/03/2019	Checked	STAINLESS STEEL TO AISI 440C		SIGN
DATE: 14/03/2019		FOR DIRECTOR	PROTECTIVE FINISH:		
APPD.	14/03/2019				
SEALD					
DATE:	EST. MASS	TITLE:			
SHEET SIZE: A3	115.92 gm				
SCALE: 1:1					
DESIGN AUTHORITY					
ARDE					
PUNE 411021					
DRG No. 02040402040600100A					
IC	SS	S	AA	A	C
JVPC	PART No.	DSCAT No.	AHSP		

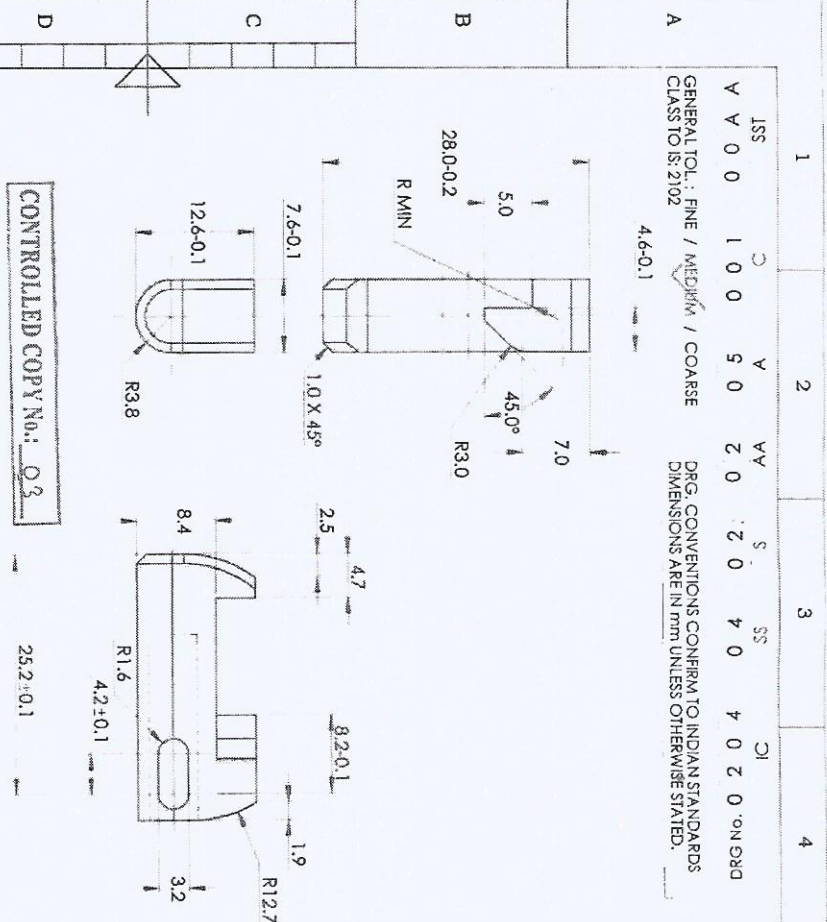
BLADE

STANDARD CELL
 J. W. ...
 Certified copy
 of drg. 02040402040600100A

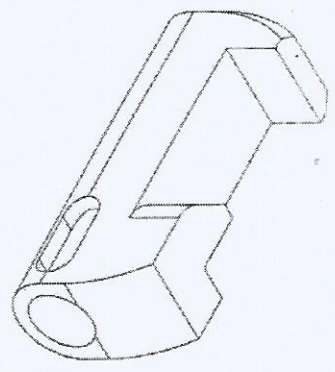
STANDARD CELL

1 2 3 4 5 6 7 8

GENERAL TOL : FINE / MEDIUM / COARSE
 CLASS TO IS: 2102
 DRG. CONVENTIONS CONFIRM TO INDIAN STANDARDS
 DIMENSIONS ARE IN mm UNLESS OTHERWISE STATED.



श्री. प्रमोद ठोंग
 Certified as correct copy
 of drg. no.
 by 10/09/18
 Dr. Works Manager
 S.W. Works Manager



NOTES:

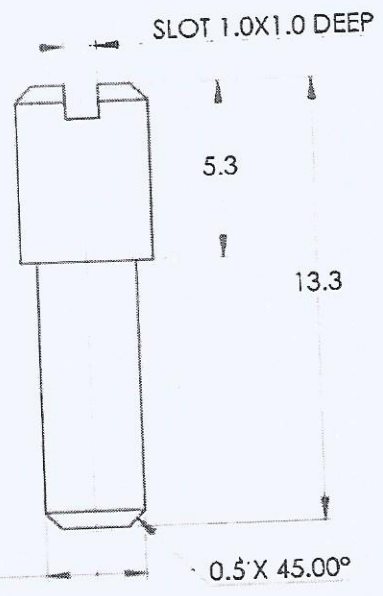
1. REMOVE ALL SHARP EDGES AND BURRS.
2. HARDNESS: 260 - 310 H.V.
3. ALL DIMENSION SHOULD BE CONSIDERED AFTER PROTECTIVE FINISH ONLY.

Sr. No.	DATE	AUTHORITY	BRIEF RECORD	ZONE	CD	GO
DRN. SQRABH						
SIGN.		CHECKED				
DATE: 14/03/2019		DESIGN DIRECTOR	MATERIAL:			
			STEEL TO IS: 5517-1993 Gd. 55C8			
APPD.	DATE: 14/03/2019		PROTECTIVE FINISH:			
			NITRIDING TO SPECN. MIL-S-6090A NOTICE 3-1998			
SEALED						
DATE:			TITLE:			
SHEET SIZE: A3			EST. MASS			
SCALE: 1:1			11.51gm			
DESIGN AUTHORITY						
ARDE						
PUNE 411021						
DRG No: 0 2 0 4	0 4	0 2	0 2	0 5	0 0 1	0 0 A A
IC	SS	S	AA	A	C	SST
JVPC	PART No.	DS CAT No.			AHSP	

CATCH

GENERAL TOL.: FINE / MEDIUM / COARSE
CLASS TO IS: 2102

DRG. CONVENTIONS CONFIRM TO INDIAN STANDARDS
DIMENSIONS ARE IN mm UNLESS OTHERWISE STATED



CONTROLLED COPY No.: 03

- NOTE:**
- 1) REMOVE ALL SHARP EDGES AND BURRS.
 - 2) HARDNESS:- 260-310 HV
 - 3) ALL DIMENSION SHOULD BE CONSIDERED AFTER PROTECTIVE FINISH ONLY.

Sr. No.	DATE	AUTHORITY	BRIEF RECORD	ZONE	CD	GO
					SIGN	

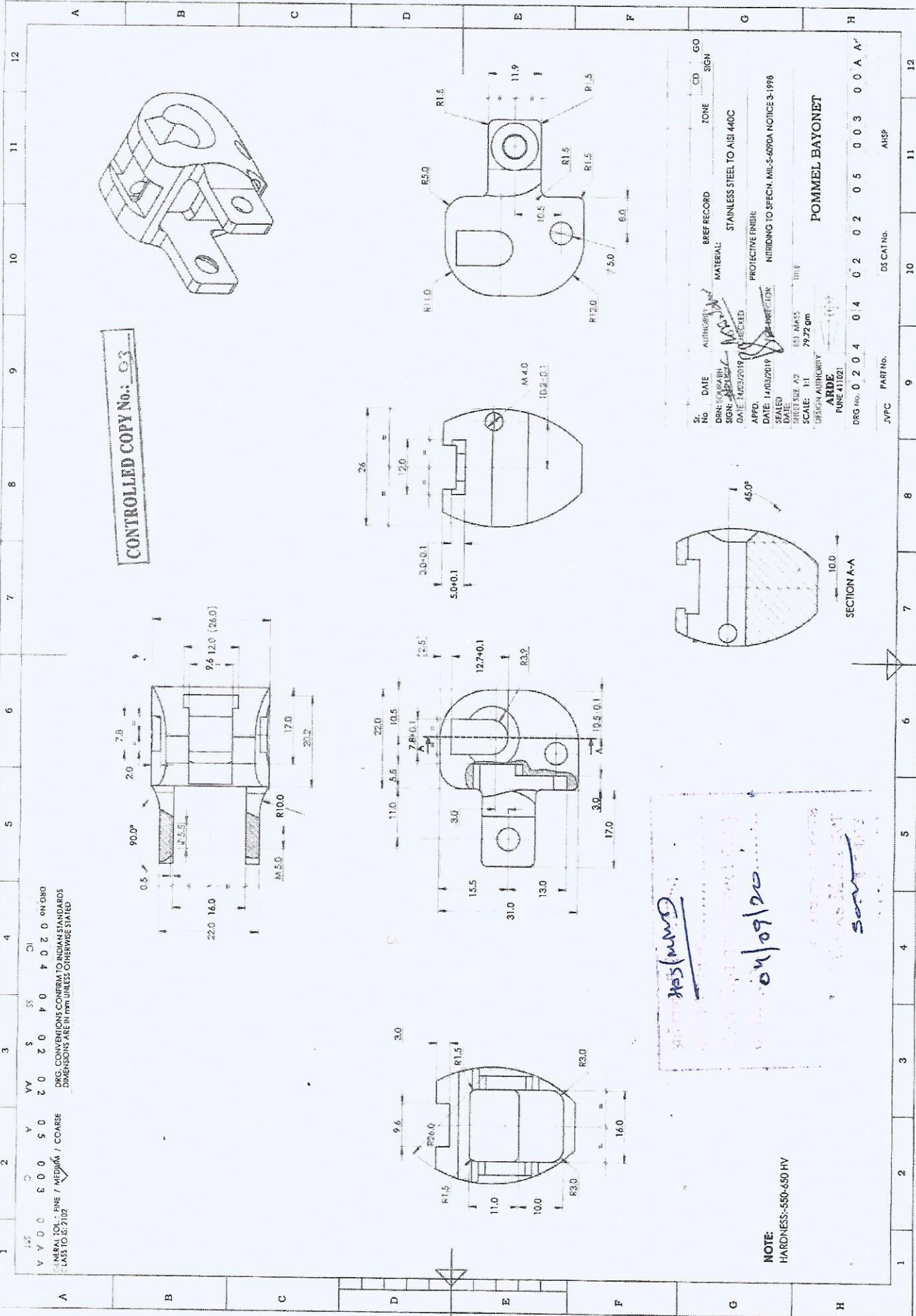
DRN: SOURABH
SIGN: *Sourabh*
DATE: 14/03/2019
CHECKED: *[Signature]*
APPD. FOR DIRECTOR
DATE: 14/03/2019
MATERIAL: STEEL TO IS: 5517-1993 Gd. 55C8
PROTECTIVE FINISH: NITRIDING TO SPECN. MIL-S-6090A NOTICE 3-1998

SEALED DATE: _____
SHEET SIZE: A4
SCALE: 5:1
EST. MASS: 0.90 gm
TITLE: **SCREW SET CATCH**

DESIGN AUTHORITY: **ARDE**
PUNE 411021

DRG No.	0 2 0 4	0 4	0 2	0 2	0 5	0 0 2	0 0 A A
	IC	SS	S	AA	A	C	SST
JVPC	PART No.	DS CAT No.			AHSP		

Handwritten notes and stamps on the right side of the drawing, including a signature and some illegible text.



CONTROLLED COPY No.: 03

DRG. CONVENTIONS CONFIRM TO INDIAN STANDARDS
 DIMENSIONS ARE IN mm UNLESS OTHERWISE STATED

NOTE:
 HARDNESS: 560-650 HV

H.S. (MMD)
 01/09/20
San

No.	DATE	AUTHORITY	BREF RECORD	ZONE	CD	GO
DRN: 000000	14/03/2019					
SIGN: [Signature]			MATERIAL: STAINLESS STEEL TO AISI 440C			
DATE: 14/03/2019			PROTECTIVE FINISH: NITRIDING TO SPECN MIL-S-6990A NOTICE 3-1978			
APPD.	DATE: 14/03/2019	DESIGN AUTHORITY: [Signature]				
SCALE: 1:1	DATE: 14/03/2019					
DRG No. 02040402020500300A						
JVPC	PART No.	9	10	11	12	
	DS CAT No.	0	2	0	2	0
	AHSP	0	4	0	2	0
		0	5	0	0	3
		0	0	0	0	0
		0	0	0	0	0

A		2		3		4	
A A 0 0		A 5 0		A A 2 0		C 4 0	
SST		C		A		SS	
DRG No. 0 2 0 4		0 2 0		0 2 0		0 4 0	
CLASS TO IS: 2102		GENERAL TOL.: FINE / MEDIUM / COARSE		DIMENSIONS ARE IN mm UNLESS OTHERWISE STATED.			
2.268Kgs. 10.142		CONTROLLED COPY No.: 03					
<p>NOTE:</p> <ol style="list-style-type: none"> 1. STRESS TO BE RELIEVED 2. WIRE DIA: 0.711 (22SWG) 3. MEAN COIL DIA: 4.14 4. NO. OF EFFECTIVE COILS: 12 5. WOUND LH OR RH 6. LOADING - STATIC 7. ONE COIL OF EACH END TO BE CLOSED IN AND GROUND SQUARE TO THE AXIS OF THE COIL LEAVING 3/4 OF COIL AT EACH END NON EFFECTIVE 8. SPRING TO WORK FREELY IN ITS LOADED AND UNLOADED 9. CONDITION IN A HOLE OF 5.16DIA. AND OVER A ROD OF 3.25DIA <p>CAMP TEST:- SPRING TO BE TESTED BEFORE GAUGING BY COMPRESSION TO SOLID LENGTH FOR A PERIOD OF 24 HOURS, AFTER WHICH IT MUST CONFORM TO FREE LENGTH.</p>							
<p>PHOSPHATED TO SPECN. IS:3618-1966, CLASS 'B'. PROTECTIVE FINISH: MATERIAL: STEEL WIRE TO IS : 4454 Pt. 1, 2001 DH CHECKED: [Signature]</p>							
DRN: SOURABH		SIGN:		DATE: 14/03/2019		APPD.	
DATE: 14/03/2019		CHECKED:		FOR DIRECTOR		DATE: 14/03/2019	
SEALD		DATE:		SHEET SIZE: A4		SCALE: 5:1	
DESIGN AUTHORITY		ARDE		PUNE 411021		DRG No. 0 2 0 4	
JYPC PART No.		IC		SS		S	
DS CAT No.		AA		AA		A	
AHSP		C		C		SST	
JYPC		PART No.		DS CAT No.		AHSP	

Certified copy
 of drawing
 Jt. Works Manager
 04/05/20
 STANDARD

